

**TDCC News**

**Op Shop:** By the time you are reading this, all being well, the Op Shop should be open! The team has done an amazing job, and we are hugely grateful to the trades people, volunteers and donors who made it all possible.

Do come on in and have a look; the clothes racks have been rejuvenated, the puzzles checked for completeness, and everything is whole, clean and affordable. Excitingly, it looks as though we will also have good-quality recreational/adventure clothing coming our way reasonably regularly.

And beside the op shop is the community food basket, and community bookshelves.

Add in the food cart smells, the picnic tables, bike stands and autumnal air, and we've got a fabulous place to hang out for a while! Come on down.

**Laundromat for Tapawera?** Yes, it's coming. Folk are often having difficulty getting items dry, particularly through winter, so we are delighted to say that it looks like there will be a laundromat in the village very soon. Even better, there's a good chance that there will be a machine specifically for dealing with pets' items. Watch this space!

**Cycleways:** The section of cycleway connecting the village to near the bridge had originally been deferred until the water works were completed, but has not been re-started since, forcing folk to walk/cycle along the roadside. At the other end of the village, the section of cycleway which runs alongside the road is seen by many as being unsafe, particularly for children. We have asked John Gully, Ward Councillor, to follow up both of these.

**Dart Ford:** What used to be a popular access-way for recreational users and residents has developed some fairly serious issues. Crossing the Dart River, the ford has become hazardous, particularly after rain. Anyone caught on the wrong side has no easy access to shelter, or assistance. We understand that tourism operators have stopped using this as an entrance into Kahurangi National Park.

In 2020, the then-Community Council made an excellent presentation to Tasman District Council regarding the ford; a copy of which is available on our website. We have asked John Gully to raise this with Council in the hope of getting a more permanent response.

**Tadmor Hill road:** The culvert is done, and it's improved enough to drive on, but before you get too excited, it appears that the water which is supposed to be going into

the new culvert may be running down the tar-seal instead, so we have more advocacy to do around this.

**In other roading news,** TDC have ordered the new lights for the village speed signs, and we are asking TDC for a more permanent solution to the gravel spilling out onto Tadmor Road, rather than the 'clean-up-the-mess' method currently used.

We have also queried why material from Ngatimoti roadside waterway clearing was carted all the way to opposite McLean's Reserve, and similar matter from near Tapawera Bridge was removed to near Motueka. In the past local landowners allowed such material to be dumped in their humps and hollows, which saved a lot of road miles.

**Community Centre:** We were kindly offered the opportunity (from a suitably qualified person) to obtain an opinion regarding the seismic report completed on the Community Centre. Unfortunately this highlighted that the original report wasn't an engineers structural report, which must be done before we do or decide anything re the building. The original report, as we understand it, is not a report upon which to make decisions. We hope to formulate a plan about this quite quickly. In the meantime, because the previous committee closed the centre, we need to keep it closed for now, to avoid liability.

We are also keeping in mind that if the Govt. bill currently before parliament goes through re community buildings, the rules will change, allowing TDCC to decide when we want to make the building safer, and to what level; this could possibly be done in stages, with donated labour/goods.

Regarding insurance for the Community Centre, we have now been able to confirm what we are, and are not, insured for; natural disasters are out, so unfortunately, along with earthquake and lightening, we are not covered for tsunamis!

**Paperwork:** There has been a veritable mountain of paperwork achieved, with everything now updated regarding Charities Commission, Incorporated Societies etc. The Auditor's report has been accepted, and we have begun the process of establishing the consultation process regarding a complete review of the constitution. Please take time to comment on the article about this which can be found on our website and elsewhere in this edition of the Informer.

The website is working well, with folk using the membership form and 'contact us' links. We are receiving on average ten emails a day from Russia, sending us recipes, with an offer to deliver meals direct! We haven't accepted.



All Accounts Matter LTD

## For all your accounting and tax needs!

If you are looking for a new Accountant, now is the perfect time! I would love to find out about your business and have a no obligation chat about how I can help you. So don't wait, call me now!

**Sonia Emerson** Chartered Accountant

GST | Tax Returns | Payroll | Bookkeeping | Cashflow Forecasting  
Management Reporting | Rental Statements | Farm Accounts



ACCOUNTING SOFTWARE



2020/2021  
Certified  
Consultant



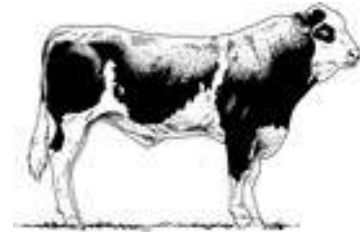
M: 021 221 1009 | P: 03 541 9005 | [sonia@allaccounts.co.nz](mailto:sonia@allaccounts.co.nz)  
367 Wakefield-Kohatu Highway, RD1, Wakefield 7095

[www.allaccounts.co.nz](http://www.allaccounts.co.nz)

Gillespie—1

MAF approved

Home kill butchery



03 547 7746

Butcher / journeyman

Specializing in quality small goods

Factory: 111 Bolt Rd, Nelson

### RURAL POST, RD 2 Wakefield

Contact Nick & Jackie Costley for all your RD 2 Wakefield postal needs.

Including prepaid envelopes, stamps, courier items and local freight from Wakefield, Dovedale and Tapawera. Prescriptions from Wakefield.

**Phone 0275418581**

Mark & Tania Gill  
T/A MTJ Transport  
RD2, Nelson

NZ Post Rural Contractors  
Servicing

Motupiko-Korere-Kikiwa-Tophouse-St Arnaud-Glenhope

For all your Postage, Milk & Courier Freight  
Operating 3 Days Weekly  
(Monday-Wednesday-Friday)  
Departing Nelson 8.00am  
Phone 546 6295

### Material & adverts for Informer

All material is to be sent to either:

Informer, PO Box 15, Tapawera, 7055  
or email- [tapawerainformergmail.com](mailto:tapawerainformergmail.com)

To be received by 5pm  
20th of the Month

If emailing a word document please send in Word as an attachment.

If sending an advert please save as a jpeg before sending.

Please check your emails to see your article/advert has been received as sometimes there needs to be alterations.

### Advertising rates for Informer

Standard ad	Pay monthly	Pay annually
1/4 page advert	\$39	\$343
1/2 page advert	\$54	\$475
Full page advert	\$78	\$686

Adverts that require editing may cost extra

The Informer is produced and published by the Tapawera and Districts Community Council, PO Box 15, Tapawera, 7055;  
email: [tapawerainformergmail.com](mailto:tapawerainformergmail.com)  
Circulation 635  
Editor: Gill Hammersley  
The Editor and Publisher try to ensure information published is truthful

and accurate, but do not accept any responsibility for errors or omissions, or for any consequences of readers' relying on the information published. Opinions expressed by contributors may or may not be endorsed by the Editor or Publisher.  
All material submitted, whether editorial or advertising, is accepted at the discretion of the Editor and the Publisher.

## TDCC News cont.

**TDC Annual Plan:** The submissions can be viewed online, and on our website. Both submissions went well, with mostly very good feedback from the community. We asked TDC for a pause to the proposed Hub project, in order to work through several outstanding issues which are causing disquiet in the community. To be clear, we did not ask for a stop, just a pause.

**The proposed Hub:** The DIA is looking at a possible alternative proposal regarding a hub for Tapawera, involving shifting two new existing buildings, fully funded within the \$500k DIA grant. TDC won't have to fund the project, but would need to provide a site, as well as a project manager, would own the buildings and be responsible for on-going management. We understand that Tapawera Connect learned about the proposal at the same time as we did. DIA became aware of the two buildings, and thought it may be a solution if TDC pause the existing project.

John Gully commented that he was excited by the proposal, but that it would be up to the community to decide.

TDCC needs to consider the underlying questions which caused us to ask for a pause on the current proposal i.e. where a hub should be sited, why do we need a new hub, how much community support is there?

Whilst the suggested time-frame is tight, we need to get it right, and for the right reasons. Our first step is to meet with the custodians of the existing Tapawera community buildings, to talk about the pros/cons. The DIA has suggested that there are other funding streams for existing buildings, which is contra information to what the community had been led to believe previously.

We do have concerns about how the community will be consulted, but will work hard to make sure that the information is transparent and correct.

**Amalgamation:** Yes, it appears to be back on the table. The Govt. has given just three months for councils to put in a submission regarding amalgamation. TDC are objecting, but there seems to be some feeling that they will likely be ignored. Many believed that being a unitary authority provided Tasman with immunity, but this is not the case.

**Roadside Maintenance schedules:** Contractors don't appear to have any maintenance schedules for regular checking of culverts etc., but are instead work reactively. John Gully is putting it to Council that Murchison and Tapawera should return to having a road man.

**And lastly, we need your help:** Does anyone know anything about the security cameras in and around the Community Centre i.e. who has the feed? Could you please let us know.

Contact us on any of the above, or anything else you wish to talk about, via our email [tapaweratdccc@gmail.com](mailto:tapaweratdccc@gmail.com), through our website, by dropping a note into PO Box 15, Tapawera, or by contacting Roy Bensemman (Chair) or Trish Palmer (Secretary). Thank you!



## Tapawera Netball Club May News

May already and the games have begun, the teams are showing great potential and really starting to gel with each other which is awesome to see.

### Tapawera Blue Rock Hops Team

Thank you to our sponsor, Blue Rock Hops Ltd, from Glen & Sara and Brian & Sarah Clayton.



**Coach:** Belinda Grice

**Manager:** Mel Heine

### Game Day Reports:

#### 2nd May – Tapawera Blue Rock Hops vs Prices Waimea

A strong first game from the team against a fast and polished opposition. The match was neck and neck until halftime before the third quarter slipped away, but the team showed plenty of promise and some great combinations throughout the court.

**Player of the Day:** Kiahna for an outstanding performance in our opening game.

**Final Score:** Tapawera Blue Rock Hops 21 – 31 Prices Waimea

**9th May – Tapawera Blue Rock Hops vs Jacks** After an injury during warm-up forced some last-minute changes, the team adapted brilliantly and started strongly and built an early lead. Great defensive pressure, attacking movement, and accurate feeding into the circle helped secure the win.

**Player of the Day:** Jada for an impressive second senior game, stepping up at WD and improving every quarter

**Final Score:** Tapawera Blue Rock Hops 27 – 18 Jacks

**16th May – Tapawera Blue Rock Hops vs Nelson Girls B** A great team performance despite managing a few injuries and positional changes. Our attacking combinations are starting to come together well, while strong defensive pressure through the court created plenty of turnover ball. The team focused on staying calm and controlling the pace, especially dominating the third quarter.

**Player of the Day:** Kiahna Telfer-Eggers for another outstanding shooting performance and strong rebounding.

**Final Score:** Tapawera Blue Rock Hops 31 – 26 Nelson Girls B

### Tapawera Fry Contracting

Thank you to our sponsor Kevin and Andrew Fry from Fry Contracting LTD.



#### 2nd May – Tapawera Fry Contracting vs Prices Kowhai

After a slow start finding our rhythm, the team settled into the game and fought back strongly in the second half. Plenty to work on, but a great first outing for the team.

**Player of the Day:** Kiana Collins for a strong first game, working hard through the midcourt and delivering great passes.

**Final Score:** Tapawera Fry Contracting 15 – 24 Prices Kowhai



"...for all creatures great & small..."

Your locally owned vet clinic,  
serving the Nelson Tasman region for 30 years

**Phone: 544 1200**

25 Edward Street, Wakefield

3 Brock Way, Richmond

info@tcvet.co.nz



Nelson / Tasman |

**Tall Poppy**  
BUSINESS TEAM

REAL ESTATE MADE EASY

I'm in your community

- Fair Fees
- Free Appraisals
- Nationwide buyer match
- My Tall Poppy Dashboard

Our marketing plans:  
Free Ignite and Platinum plans

Tall Poppy has qualified buyers  
actively searching for the right property.

Call me, please, about your property's  
market potential

**AMBER DIACK**

Licensed Salesperson (REAA 2008)

021 0881 1926

amber.diack@tallpoppy.co.nz



# Tapawera Community Craft and Market Day

Last Sunday of the month



Across the road from 4 Square  
on the village green, 10am to 2pm.

Bring along your crafts/produce  
/unwanted items to sell.



Enquiries to Amanda Beer on FB messenger or via the Tapawera and Surrounding Valleys FB page.



## Tapawera Netball Club May News cont.

### 9th May – Tapawera Fry Contracting vs Suburban White

Despite some nerves early on, the team showed great determination and teamwork throughout the

game. The score didn't reflect the effort, with strong performances across the court and lots of positives to build on.

**Player of the Day:** Tami Wi for her excellent effort in GS and GK, showing determination and huge potential in her first season.

**Final Score:** Tapawera Fry Contracting 11 – 21 Suburban White

**16th May – Tapawera Fry Contracting vs Jacks** A closely contested game with the team working hard right through to the final whistle. Strong teamwork, defensive pressure, and some great shooting kept the game competitive throughout.

**Player of the Day:** Shaye Walker for her outstanding work rate, defensive pressure, and always being available for the reset ball.

**Final Score:** Tapawera Fry Contracting 19 – 25 Jacks Muesli & Co

### Tapawera Bush End Farms

Thanks to our sponsor, Phil & Jocelyn Riley from Bushend Farms Ltd.



**Coach:** Toni Derbyshire

**Manager:** Vanessa Webb

### 2nd May – Tapawera Bushend Farms vs Waimea 9 Rata

A dominant first game back for the team, showing strong teamwork and positive energy right from the start. A fantastic way to begin the season and build momentum through grading.

**Final Score:** Tapawera Bushend Farms 34 – 3 Waimea 9 Rata

### 9th May – Tapawera Bushend Farms vs NCG 9 Bellbirds

After a scrappy start on a wet court, the girls quickly settled into the game with strong defence, smart passing, and fast scoring from turnovers to secure an impressive win.

**Player of the Day:** Holly Bright for great movement and creating space on court.

**Final Score:** Tapawera Bushend Farms 44 – 6 NCG 9 Bellbirds

### 16th May – Tapawera Bushend Farms vs Garin 9 Keas

The team played some outstanding netball, showing great court balance, space awareness, and defensive pressure throughout the game. Strong defensive combinations kept Garin to just two goals.

**Player of the Day:** Atlanta Linstead for her intercepts and excellent hustle in GK.

**Final Score:** Tapawera Bushend Farms 28 – 2 Garin 9 Keas

### Sivad Farms

Thanks to our sponsors Stu and Paula Davis from Sivad Farms Ltd.



**Coach:** Atlanta Linstead

**Manager:** Tania Coleman

### 2nd May – Tapawera Sivad Farms vs Wakefield Kiwis

A great start to the season with the team playing really well together and securing a strong win.

**Player of the Day:** Ayrana Linstead for great sportsmanship and a positive attitude.

**Final Score:** Tapawera Sivad Farms 12 – 1 Wakefield Kiwis

### 9th May – Tapawera Sivad Farms vs Nelson Central

Another strong team performance with great defence and teamwork across the court to secure another win.

**Player of the Day:** Aaliyah Winwood for her defensive effort, staying tight on her player, and supporting her teammates well.

**Final Score:** Tapawera Sivad Farms 10 – 1 Nelson Central

### 16th May – Tapawera Sivad Farms vs Ranzau School

Despite the loss, the girls played well as a team and gave their all throughout the game with plenty of determination and effort shown on court.

**Player of the Day:** Evanna Carr for her strong attacking play, finding space, and contesting the ball well.

**Final Score:** Tapawera Sivad Farms 5 – 10 Ranzau School

### Nelson Hops New Zealand (Korere/Mt Arthur)

Thanks to our sponsor, Nelson Hops New Zealand, from Korere Hop Farm and Mt Arthur Hop Farm.



**Coach:** Lissie Anglesey

**Manager:** Tegan Cornell

### 6th May – Tapawera Nelson Hops vs Stoke Pulse

An outstanding team performance with great intercepts, strong passing, and excellent teamwork across the court. It was fantastic to see the players spreading out, getting free, and encouraging one another throughout the game. A special mention to the players who stepped in to help the opposition, showing fantastic sportsmanship.

**Players of the Day:** Chelsea Reilly for her determination and effort on court, and Mackenzie Booth for overcoming her nerves and giving her all throughout the game.

### 13th May – Tapawera Nelson Hops vs Clifton Terrace School

Another strong effort from the team this week, with everyone giving their best and continuing to improve each game as confidence and teamwork grow.

**Players of the Day:** Meeka MacDonald & Sierra Winwood.

We have a [Tapawera Netball Club \(@tapaweranetball\)](#). On Facebook you can see the full breakdown. Club email is [tapaweranetballclub1988@gmail.com](mailto:tapaweranetballclub1988@gmail.com)

Lissie Anglesey, Secretary

# TAPAWERA ELECTRICAL

## Tony Stephens

Registered Electrician

Ph/fax 5224257

0276249489

Renaë 0275616510

All electrical needs  
Domestic & Rural

Wiring, faults, some home appliance repairs  
New heat pump installations



Free Quotes  
Competitively priced

DREW LOGAN  
*Photography*

WEDDING  
COMMERCIAL  
NEWBORN  
FAMILY

WWW.DREWLOGANPHOTOGRAPHY.CO.NZ  
0273173102  
#DREWLOGANPHOTOGRAPHY  
DREWLOGANPHOTOGRAPHY#HOTMAIL.COM

**Tasman Bay  
Chiropractic**  
Keeping you in the game since 2002

Referrals, families and  
all new clients welcome

Visit our website or call for more information



03 544 4554 Monday-Saturday  
tasmanbaychiropractic.co.nz

Find us on  

**WANTED:  
LOCAL VOICES**  
for the Motueka  
Catchment Collective  
Steering Group.

Do you care about land, water & the future of the  
Motueka catchment?

**The Motueka Catchment Collective is  
looking for farmers and community  
members living & working in the  
catchment to join our Steering Group.**

- ✓ Share practical, on-farm perspectives
- ✓ Help guide catchment wide action
- ✓ Work alongside farmers, iwi, councils & community
- ✓ No governance experience needed
- ✓ Quarterly meetings

If you are connected to farming, forestry, horticulture,  
lifestyle blocks or mana whenua  
then we'd love to hear from you.  
Email [support@motuekacatchment.org.nz](mailto:support@motuekacatchment.org.nz)  
with a brief outline of your experience & reason for  
interest.



## Tapawera Community Connection Update – June 2026

Do you want to connect to others in our community? Read on for information on what's been happening in our village and more fun ways to get involved.

### Workshops

#### Dehydrating Workshop



Our dehydrating workshop was well attended with a great presentation from Jeanette Booth and Tony Stephens. The group learnt lots of new techniques and were able to share tips and tricks to become more food resilient. We tasted an amazing array of different fruits that Jeanette had dehydrated, and Tony shared his dehydrated tramping meal tips and brought an uncommon product for us to sample, which turned out to be dehydrated strawberry yoghurt!

#### Chainsaw Safety / Repair – 6<sup>th</sup> June 2026



We are delighted to offer a Chainsaw workshop on Saturday 6<sup>th</sup> June, 8.30am to 3.30pm. This will be held locally, and a record of learning can be provided.

The workshop will cover how a chainsaw works, safety, 3 different cuts and basic maintenance. The cost is \$30pp but funding is available if required. You will need steel cap boots, but all other gear is provided. **Let me know as soon as possible if you would like to be a part of this**, as numbers are strictly limited.

#### Basket Weaving – July 2026

Basket weaving was a topic that had a lot of interest from members of the community when I sent out a recent survey. I am currently looking for a facilitator to run this workshop in July. Please let me know as soon as possible if this is something you are interested in doing. Funding is available.



**MARK YOUR CALENDARS!!** The 2026 Tapawera Spring Show will be held on Saturday 17 October, 11am to 3pm. Wet or fine.

The organisers have had a debrief and this year the show will be even better than last year. We are looking for volunteers on the day and for small roles leading up to the event. If you would like to connect with others in the community and have a few hours to spare, please contact Sabine on [sreinert@tapawera.school.nz](mailto:sreinert@tapawera.school.nz) or 021 0278 8260.

#### Flood Debrief Meeting

**Wednesday 10 June, 5.30pm to 7.00pm at the Rugby Club Rooms.** An opportunity for the Tapawera Community to meet with our local Emergency Planning Team, Nelson Tasman Emergency Management, Civil Defence and other response and recovery partners, to look back on the 2025 flood events and consider what went well and where there are areas for improvement.

#### Support

With the cost of living only getting tougher there are many people in our community who are finding things a bit tough.

If you or anyone you know needs any assistance or support, talk to me and I can point you in the right direction.

I am also able to assist with getting firewood or help with your latest power bill. **Jan or I will be at the coffee cart on Wednesday's from 10am to 12 noon if you would like to connect with us or send me an email for a confidential meeting.**



**Della Webby**, CLDP Community Connector.

[della@tapaweraconnect.org](mailto:della@tapaweraconnect.org) / Phone: 027 479 4420

# WADSWORTH MOTORS LTD.

- Coach Charters & Tours
- Mini Bus Hire.
- School Transport
- Professional friendly drivers
- Members of the Bus & Coach Association

Over 100  
Years of  
Service

wadsworthmotors@extra.co.nz  
100 Main Rd, Tapawera  
www.wadsworthmotors.co.nz

**027 4873167**



## Bible Study

*The Church Bell is  
Ringing*

**You're Invited**

Last Tuesday of every month  
St James Church, 797 Tadmor Valley  
Road, 6pm.  
Followed by a (BYO) picnic tea at 7pm  
or Pizza Plus  
BYO blanket and hottie if need be :-)  
Contact  
tania@thewordofgodssavedmylife.com  
or M: 021803411



## Golden Bush Garden Club



*And without that vision we wouldn't be here  
So raise up your glasses for the next 30 years!*

Our May meeting was held at the amazing Glenhope garden of **Paul and Jean Woods**. The weather couldn't have been more perfect and the fellowship was warm too. We had some visitors as well as a couple of members from the past who wanted to come and celebrate the life of Jean, who had been a member since the Club's early days. Paul welcomed us all and asked if we could read a poem written by Jean when she was the Secretary back in 2007. We all remember Jean as a very experienced and knowledgeable gardener, but those that knew her also know she was incredibly creative and turned her hand to pretty much anything that took her fancy. I was asked to share her poem here. Noting the dates we realised that 2027 will be the Club's 50th anniversary, so we need to plan some great celebrations. Thanks for the prompt Jean!

*On 14th September In the year 77  
The ladies of Tap did meet*

*The name was decided Golden Bush it will be  
Encompassing the district don't you see.*

*50cents is the cost for the annual subscription  
Gather more members that's your mission*

*From small beginnings the club has grown  
Thanks to that journey into the unknown*

*Plants have been traded, swapped or just given  
Between member and member each with a vision*

*Throughout the years we've followed our hearts  
Flowers, shrubs, veges - up the garden path*

*No garden's the same. They're all individual  
And isn't it more fun than regimental*

*Sometimes we moan the weather's not right  
It's too cold or too windy or the sun's too bright.*

*We moan plants are wilting or are lost to the wet  
We can't get it right, but we're trying our best*

*The gardener's prayer is to get it just right  
Even if it means gardening at night!*

*But we're out at dawn chorus watering away  
Reviving our plants for the coming day*

*The pleasure it gives when we get it right  
Is worth all the labour, back breaking delight*

*We travel to districts both near and far  
Looking at things by bus, boat or car.*

*We've visited gardens both big and small  
Craft shops and potters, we've seen them all.*

*The friendships made will last through the years  
Each cemented in gardens, smiles and tears.*

*I hope you've enjoyed the pleasure it's brought  
Out in the garden digging the dirt*

**Our June 11<sup>th</sup> meeting** will be a Midwinter Christmas celebration at the home of our President, Linda Milsom at Woodstock. The fire will be on and the halls decked...or some tinsel at least. There will be the usual raffle and auction, but to add some Christmassy cheer we ask that you bring along a small, fun gift to the value of \$10 only, wrapped to place under the tree. People participating will be able to select a gift from under the tree during the festivities. We will have a shared lunch, so please bring a dish that you usually like to have at Christmas time, whether a side dish to accompany our ham, turkey and roast tatties, or a dessert that you love. Remember to bring a chair, your cup for a hot cuppa and if you want to sip on something chilled bring that and a glass with you. The meeting will start as usual at 11am, but allow extra time for our festivities afterwards.



**Senior's Snippets June 2026** with Janine Leeden,  
0277525975

**Wellby Talking Café** will be at St Peter's Church on **Tuesday 9th June, 10-11.30am**. \$3 helps cover costs. This event is open to people of all ages and is an opportunity for relaxed, friendly conversation over a hot cuppa.

**Tea and Talk** is on the last Tuesday of the month, so **June 30<sup>th</sup>**, from 10-11.30am, again at St Peter's Church. Our guest speaker this month will be **Theresa Kidd-Foley from Epilepsy NZ**. Join Theresa for an informal community conversation in Tapawera about what epilepsy is, what seizures can look like, and the realities of living with a chronic neurological condition. The session will also explore wellbeing, safety, support for whānau, and how communities can better understand and support people living with epilepsy.

This session is open to anyone interested in learning more about how epilepsy might affect anyone in their whānau and how it can be identified and managed. \$3 covers a lovely morning tea with a hot cuppa. Come in. It's warm in the sanctuary.

As usual, we meet weekly at the same venue for **Seniors' Sit and Be Fit**, which is part of ACC's Strength and Balance programme. Exercises run from 10-10.50, followed by a cuppa if you want to stay and enjoy some social connection. This is followed by the popular mind exercise game of Mexican Trains. This is when we find out who is really competitive.

For further information, check out the monthly events calendar and to read some blog posts of local events and activities be sure to check out our easy to navigate website:

[www.tapaweraconnect.org](http://www.tapaweraconnect.org).

**BinGo Bins**  
DRUM & WHEELIE BIN HIRE

**Craig Fry "Cracker"**  
Owner/ Operator

027 761 0240  
bingoriwaka@gmail.com



**SHEDPROS**  
TASMAN SHED & CABIN BUILDERS




**Sheds & Cabins  
Built for Rural Living**

From farm sheds and workshops to cabins and lifestyle buildings, ShedPros builds practical structures designed for rural properties.

Call Nathan Today  
**021 277 6775**  
WWW.SHEDPROS.CO.NZ

*The Lady Tradie* 

Has your husband got a **round**



Spring has sprung  
and the grass has riz !  
Do you wonder where a handyman is ?  
Can't get one ?

Then call " Jen the Lady Tradie "  
for all your outside spring clean-up jobs

- \* Gutters full of leaves;
- \* Lawns that are starting to bolt;
- \* Waterblasting those slippery paths

and all that spring growth that just might get away on you.

**\* Local Person \* Referees Available \***

Consideration & discount shown towards Senior Citizens

**FREE QUOTES**  
**Contact Jennifer**  
Phone or text: **027 544 2663**  
After hours/leave a message: **03 522 4453**  
Email enquiries to: **jentheladytradie@gmail.com**

**HANDYMAN**

- \* General property maintenance
- \* Clean out/tidy up
- \* Water blasting
- \* Gardening
- \* Chain sawing
- \* Repairs
- \* Demolition
- \* Any farm work

Fair hourly rate. Honest and hard working.

Local references available.

Please enquire to Jeremy Ellis:  
(03) 522 4460 or 0276697744

## Warm Welcome at Tapawera Wellby Talking Café

Despite an icy 2-degree start and foggy conditions, a warm welcome awaited guests at the latest Wellby Talking Café held at St Peter's Anglican Church in Tapawera held on Tuesday 12 May.

Hosted by Tapawera Connect, the monthly gathering attracted a good turnout, including two first-time visitors who added "an excited buzz to the group," says Senior Wellbeing Co-ordinator Janine Leeden.

Wellby Taking Cafes support wellbeing and social connection in local communities and are held each month across Nelson Tasman, offering locals a relaxed opportunity to connect over a hot drink and conversation in a friendly and supportive environment.

The cafés are for all ages and stages and anyone is welcome to pop in for a cuppa and a chat. They are coordinated by partners Volunteer Nelson, Age Concern and local libraries with grant support from local and national funding bodies.



**Tapawera community members drop in for Cuppa and Chat**  
Participants at Wellby Talking Café held on Tuesday 12 May hosted by Tapawera Connect at St.Peter's Anglican Church, Tapawera.

The next Tapawera Wellby Talking Café (held on the 2nd Tuesday each month) will take place on Tuesday 9 June, from 10am–11.30am at St Peter's Anglican Church, Tapawera. For those venturing out to Motueka, the next Motueka Wellby Talking Café (run on the 3rd Wednesday of the month) will be held on Wednesday 20 May, 10am–11.30am, hosted by Motueka Library.

Find out more about Wellby and upcoming dates at [wellby.org.nz](http://wellby.org.nz) or on Facebook at <https://www.facebook.com/wellbynelsonstasman> or contact [hello@wellby.org.nz](mailto:hello@wellby.org.nz).

## Proposed process for consulting on TDCC's constitution May 2026

Dear community member,

We are looking at revisiting TDCC's constitution, as requested by members, but first we need to develop a protocol for the consultation process.

Please find below the draft consultation process regarding the constitution, which we will be considering at our June meeting. We are writing to you now to ask that you feed back to us your thoughts/comments/ideas regarding the proposed process.

Please do not comment on the constitution itself, as this will come later.

So, this is the proposal:

1/ That we ask the community (members and residents of the Tapawera & districts area) for feedback on the current constitution, This could include:

- what you think should have been included.
- what you think should have been excluded.
- what you like about the current constitution.
- what changes you believe need to be made.

2/ TDCC will collate the feedback and formulate a draft constitution.

3/ The draft constitution will then be circulated within the community (members and residents of the Tapawera & districts area) for feedback, via our website, members list and FB page.

4/ TDCC will collate the feedback and amend the draft constitution as appropriate.

5/ TDCC will then seek legal advice regarding the updated draft.

6/ TDCC will put the revised constitution to members for discussion and adoption.

Please note that it may be necessary to repeat steps 3 and 4 after step 5.

Our intention is that this process will ensure that the community feels that you have had clear opportunity to engage in the redrafting process, and feel included/heard.

Feedback on this draft process can be emailed to [tapaweratdcc@gmail.com](mailto:tapaweratdcc@gmail.com), sent to PO Box 15, Tapawera, or handed to any TDCC committee member. (Roy Bensemman, Dean Walls, Geoff Proffitt, Kieri Williams, Julie Jacobson, Trish Palmer.)



# Tuffnell

2017 LIMITED

## Plumbing Drainage & Gas

**LOCAL • RELIABLE • EXPERIENCED**



**WE SPECIALISE IN ALL THINGS PLUMBING**

- Leaking Pipes & Taps
- Kitchen & Bathroom Renovations
- Hot Water Pressure Upgrades
- Solar Hot Water
- Gasfitting
- New Housing & Commercial
- Drainlaying & Wastewater
- IQP Backflow Testing
- Blocked Drains - CCTV Camera Inspection
- 24 Hour Emergency Service
- Master Plumbers Guarantee
- Free Quotes



**Certifying Plumbers, Gasfitters & Drainlayers Since 1915**

**Call 03 543 8090**

**0800 129 683**

**info@tuffnell.co.nz**

**www.tuffnell.co.nz**



**f Find us on Facebook**  
[www.facebook.com/tuffnell/](http://www.facebook.com/tuffnell/)



## Tapawera Area School News

Another busy start to the term with lots going on inside and outside of the classroom.

Some brief highlights have been the school Cross Country, some of our primary classes kayaking, Year 10-13 students selected for National Tournament in the North Island and some amazing academic results across the school. Cross country with our awesome Kindergarten students also taking part was so good to view and be part of. So many parents watching and cheering on as well, a really positive community feel.

Our Year 6, 7 and 8 students had the chance to go canoeing this week and could not have got better days for it. Four students from our Year 10-13 have been selected to go to the National Area Schools Tournament in the North Island in Week 1 of this term, with potential to then be selected for New Zealand representative teams. A very high standard and well done to them all.

Our NCEA progress from Year 10-13 has been outstanding with a number of students already having passed NCEA for the year and working on their next year's NCEA a year ahead of time. Some will pass both in this one year and really open up further opportunities for more subjects, employment or further education. We aim to provide wide opportunities for all and it is working.

Primary progress is also good and the Mid-Year reports coming out in week 11 will show this progress for all of our Year 0-8 students. Year 9 and 10 students have been sitting their practice exams this week for Numeracy and Literacy NCEA, with the real exams in two weeks' time. A great help here has been the work of our Learning Support team and 13 Reader/Writers helping provide equity for all of our students.

Coming out in the next couple of weeks will be our Year 7 and 8 Prospectus for moving into the High School area at Tapawera, the wide range opportunities it provides and the benefits of small class sizes working with staff who know the students well. I will be taking this information on a "roadshow" to our local Primary Schools as well, as we are having strong interest from a number of parents at these schools as their children come to the end of their primary education. If you are one of these families or possibly currently home-schooling your children at present, give me a call or email and I can send you these documents, arrange a visit and chat with you if you would like?

Our attendance last term reached the highest it has been for the last 5 years and we will continue to focus on this, the more time at school, the better the educational outcomes for all and the more chance to take up the opportunities on offer.

Discipline at the school has got better and better, we have had a 400%, yes that is right, 400% increase in positive behaviour notifications at school this year. That means students who are actively and positively making a difference in school, in class and around the community.

Our Senior Art Classes will be visiting the Suter Art Exhibition next week in Nelson, again, another great opportunity for these students.

We completed our first Fire Drill of the Year this week, which went well but we will aim to speed up the time as we practice again in a couple of weeks.

Finally, I love to get the chance to visit classrooms across the school and see the great work the students are doing from Year 1 to Year 13 but this week I also got the chance to go to Chess Club in the Library and take on some of our very keen and talented players. I sneaked out with 4 wins but some of those games were very close and rematches are on the cards.

Andy Ashworth – Principal

### Outstanding Success at Area School Trials!

A massive congratulations to Shakaia, Kiana, Paige, and Hunter, who represented our school at the Area School Trials this past Sunday and Monday. It was an incredibly successful outing, with all four students being selected for at least one representative team!

These talented athletes will be traveling to Whangārei later this term to compete at the next level. Shakaia has been selected for Basketball and Volleyball, Paige for Volleyball, and Hunter for Rugby. Kiana had a particularly busy trial, making the teams for Volleyball, Rugby, and Kī-o-rahi.

This is a huge achievement for our students, and they will be doing a lot of fundraising over the coming weeks to help cover the costs of the trip. We would greatly appreciate any support the community can offer to help get them there. Congratulations once again to our regional representatives!

### Congratulations Leroy

Leroy has completed 500 SVA (Student Volunteer Army) hours – an incredible milestone!



## ART WORKSHOP COMMUNITY CENTRE FUNDRAISER.

I am proposing to run art sessions at my home to raise funds for the refurbishment and upgrading of the Community Centre building.

I suggest a meeting of those who are interested so that a plan, of up to four folk maximum at this stage, is manageable with regular attendance and payments that will benefit us all. I intend to start this project at my home in the village. Maybe this workshop proposal will expand to the Community Centre in due course?

Please contact me if you would like to be involved. I suggest you contact me via my email address: [susan.creedy@xtra.co.nz](mailto:susan.creedy@xtra.co.nz) Please make sure to leave a phone number too.

I have had almost 40 years' experience coaching night classes in painting and drawing which included some time at Tapawera School.

I am planning to meet interested folk on Wed 10<sup>th</sup> June.

I look forward to hearing from you. Thanks, Susan Creedy.

## COME TO A TALKING CAFÉ

Connect with your community



Talking Cafés are an opportunity to meet people, make new friends and find out more about activities, services and support in your community.

Pop in for a quick cuppa, or stay for a longer chat. All are welcome, no bookings required.

Upcoming Talking Cafés  
St. Peter's Anglican Church, Tapawera  
2nd Tuesday of the month,  
Tuesday, 9<sup>th</sup> June 10.00am-11.30am  
Tuesday, 14<sup>th</sup> July 10.00am-11.30am  
Tuesday, 11<sup>th</sup> August 10.00am-11.30am

**welby**

For more details:  
[welby.org.nz](http://welby.org.nz)  
or phone (03) 546 7681



## TAPAWERA PLUMBING AND GAS

*Your Local Plumbing & Gas Experts*

Need a reliable plumber or gas fitter?

Look no further than **Tapawera Plumbing and Gas!**

Based in Tapawera and servicing the surrounding areas – including Murchison.

We offer trusted, professional service with a friendly, local touch.

- General plumbing repairs & maintenance
  - Gas fitting & hot water solutions
  - New builds & renovations
- Prompt, tidy & dependable service

**Contact Diego Fieldsend**

**Phone: 0223623195**

**Email: [admin@tapaweraplumbingandgas.co.nz](mailto:admin@tapaweraplumbingandgas.co.nz)**



## TAS News Cont.

The Student Volunteer Army (SVA) is a nationwide movement that encourages young people to give back to their communities through volunteering, service, and helping others. Every hour logged reflects kindness, commitment, and a willingness to make a difference.

Through his 500 hours, Leroy has shown outstanding dedication, leadership, and community spirit. We are so proud of the positive impact he is making!

Well done, Leroy – what an inspiring achievement!

*“Over the last three or so years, I have been doing volunteer work, primarily Bus Monitoring for the Kohatu-Korree Bus. I have also volunteered for other school events and activities such as Swimming Sports and Tabloids last year. Generally, I am happy with getting my gold and overall really enjoy volunteering.”*



## Area Schools Leadership Camp

On April 14th, I went to Wainui Campground for an Area Schools Leadership Camp. The course is a 5 day course that started on the 13th and ended at the 17th. I arrived a day late due to flight delays. The leadership course aimed to challenge young leaders and push them out of their comfort zone in order to help them grow as people. I personally found the social aspect my favourite part of the course. I met some amazing people who made it an enjoyable experience. I did not enjoy having to dive into freezing cold water at six in the morning. There were plenty of funny and tense moments. On the last night of the course, a spider set off the fire alarm. I slept through the alarm so I was pretty lucky it was a spider and not a real fire call. It was an enjoyable experience that I would highly recommend to anyone whether they are interested in leadership roles or just want to do some exciting activities with cool people.

Izak

## Canoeing

Room's 5 and 7 were fortunate enough to spend a day each at Stephen's Bay canoeing, thanks to Wilderness Canoe Trust. We started in Stephen's Bay and learnt the basics and practiced close to the shore before making our way around to Little Kaiteriteri for lunch! After lunch we made our way back before learning how to clean the canoes and load them up onto the trailer. Room 5 were able to take in the scenery, as they were split into two groups, either walking or canoeing and then swapping over at Little Kaiteriteri. Thanks to Rob from Wilderness Canoe Trust for the experience and to Mr Wilson and Leigh for taking Room 5, and to Mr Hooper and Emelie for taking Room 7.





## TAS News Cont.

### Cross Country

What an amazing afternoon for Cross Country!! It was truly awesome to see our kindy kids participate!

A heartfelt thanks to Tapawera Fire Brigade for creating the slippery slope, Sabine for the hay bale obstacles and Tegan and Steve for running the event! It was incredible to see a great turn out of parent supporters. What a wicked afternoon we had.



**Fun and Games on Pink Shirt Day.**

**Speak Up, Stand Together, Stop Bullying.**



### Library Opening Times

**Monday to Friday 10:30 - 1:30**

Closed Holidays and weekends except by prior arrangement. We are behind the Tennis Courts and all are welcome. We are not just a school library but also a free community library with many adult novels and Non-fiction.

To get in contact call 03 522 4337 ext 213 or email [library@tapawera.school.nz](mailto:library@tapawera.school.nz)

If anyone would like to come in and have a game of chess on Tuesday mornings or just help teach some new chess moves to our tamariki then please don't be shy, we would love to see you. We do have a lot of new books in at the moment so the library shelves are looking fresh.

### Tapawera and Valleys Historical Society Inc

**AGM**

**Sunday 21 June**

**1.00pm at**

**Stanley Brook Hall**

**Meeting will be followed by  
a look at "Farming through  
the decades in Stanley Brook"**

**All Very Welcome**

Enquiries to Barbara Carleton  
ph 5224317



### Some Winter FAQs

So winter has arrived and with it the usual range of winter infections. I thought I would try and cover some of the frequently asked questions about these 'bugs'.



#### 1. When should I worry about a high temperature?

This is a good question, and behind that question is usually a concern that a child may have a febrile seizure if their temperature goes too high.

A fever is one of the body's ways of getting rid of germs. Unfortunately, we usually feel unwell with a high fever, and just occasionally a child can get a seizure. There is no particular temperature when a seizure happens. It seems that a seizure is more likely if the temperature goes up very quickly, and some people just seem to have a lower threshold for having seizures.

In general, we treat a fever if the sick person is unwell with it. If a child is younger than 3 months it is good to see the doctor if the fever is over 38. If a child is between 3 and 6 months it is good to see a doctor if the fever is over 39. However, how a child or adult is feeling and acting is more important than just the number on the thermometer, so if in doubt, come and see us at the Health Centre. Looking after a sick kid or adult can be scary and we would far rather check them out than have you worrying.

#### 2. What is the best way to treat a fever?

In general we treat a fever if the sick person is unwell with it. A really good article for advice on treating a fever in children can be found at: <https://patient.info/health/feverhigh-temperature-in-children>

Taking fluids is really good for bringing a fever down and preventing dehydration.

If a child is younger than 6 months, Paracetamol is the safest medicine for a fever. Older than this Ibuprofen can be used but NOT if the person is dehydrated. For fevers that won't come down with just Paracetamol, it is fine to add in Ibuprofen as well.

#### 3. What do I do about dehydration with tummy bugs?

This can be a problem when even a mouthful of fluid seems to bring on more vomiting! However some fluid does actually get absorbed so it is worth persisting. A useful guide is to give 1 ml of fluid for every kilogram of body weight every 5 minutes and keep this up for 2-4 hours. For

example if a baby is 10 kg, they would need 10 ml (2 tsp) of fluid every 5 minutes. Our nurses are a great source of advice in these situations.

#### 4. When should antibiotics be used?

Briefly, most coughs and colds and flu-like illnesses are caused by viruses and antibiotics are not effective against viruses. They are effective for bacterial illnesses. You will have heard reports of looming antibiotic resistance and you may have heard about recent research on our microbiome, the mass of bacteria that live in our bodies and that have a huge effect on our health. Antibiotics can affect the balance of these bacteria in our body and that can have a negative effect on our health. So we try and use antibiotics wisely.

#### 5. Why are there no drugs in the jungle?

Because the parrots-eat - 'em- all ( Paracetamol) !!!!!



### Letters to the Editor

Dear Editor

The Informer, May 2026 detailed what's happening regarding the TDCC. It was great to read that the TDCC is getting things done and communicating this through the Informer. However, a couple of items are of concern.

**Annual Plan:** It is a complete anathema to me why the TDCC would not wholeheartedly embrace a new, warm, functional community centre (New Hub), to serve current and future generations. Support this now and provide a community centre fit for the 21st Century. Motueka, Upper Moutere, Murchison and St Arnaud have modern, fully compliant, functional, warm and friendly community spaces. Are the community needs of Tapawera any different?

**Survey:** Under the Annual Plan it is mentioned that there is "incorrect information" floating about. In the paragraph immediately preceding this it is mentioned that a "Private Survey" was presented to the TDCC. As Mark Twain famously said, "There are lies, damned lies and statistics". It is a concern that the TDCC accepted this survey but more alarmingly, published the results. Private surveys should remain private and have no validity. However, given that we now have the results, the methodology and wording of the survey needs to be made public. I trust the TDCC will be more circumspect when similar situations are presented.

Keep up the good work, I look forward to the next TDCC Update.

Regards,

Mike Drake

**Book Discussion Group**

Meet: 4th Thursday in month, 10am  
 Contact: Adrienne Baigent 021408892

**Federated Farmers**

Contact: Harry Matthews - Field Rep -  
 0275078901

**Golden Bush Garden Club**

Meet: 2nd Thursday of month  
 Contact: President, Linda Milsom  
 02102510945, or Shirley Percy 5224924

**Golf**

Meet: every Sunday, Ladies 9 hole  
 every Tuesday  
 Contact: Gary Oldham ph. 0278080578

**Historical Society**

Contact: Barbara Carleton ph. 5224317

**Informer**

PO Box 15 Tapawera  
 Email [tapawerainformers@gmail.com](mailto:tapawerainformers@gmail.com)

**Justice of The Peace**

Peter Phillips ph. 5224313  
 John Ellis ph. 021 522429  
 Brent Hodgkinson ph. 5224381  
 Susan Fenemor ph. 0275224009 (text  
 during school hours)

**Kohatu Life Group**

Sharing faith and fellowship  
 Meeting Wednesdays @ 10:30am  
 Contact: Ian & Karilyn 0274 950 470

**MENZSHED**

Contact: John Wilmshurst ph. 5224616

**Netball**

Contact: Susan Fenemor ph.  
 0275224009 (text during school hours)

**Ramblers**

Meet: each month  
 Contact: Shirley Percy ph. 5224924

**Shedwood Hall bookings**

Contact: Tania Higgins ph. 5224587

**St Andrews Church Stanley Brook**

Services every Sunday. Cup of tea  
 afterwards.  
 Contact: Lee Winter ph. 5224160

**St John – Tapawera**

**For emergencies Dial 111,**  
 Email [info@stjohn.org.nz](mailto:info@stjohn.org.nz)

**Tapawera & Dist. Community Church**

**St. Peter's Tapawera:** no services at  
 present  
 Contact: Church office 03 541 8883  
[wakefieldanglican.@xtra.co.nz](mailto:wakefieldanglican.@xtra.co.nz)  
 Urgent enquiries to Andrea 0024169386

**Tapawera Food Bank**

Contact: Suzzi Lankshear ph.  
 0277491063

**Tapawera & Dist. Community Council**

Meetings: 3rd Tuesday of month,  
 7pm Tapawera Community Centre,  
 email: [TapaweraTDCC@gmail.com](mailto:TapaweraTDCC@gmail.com)

**Tapawera Community Centre**

Email: [tapaweratdccc@gmail.com](mailto:tapaweratdccc@gmail.com)

**Tapawera Connect**

Contact: Rachel Moffit ph. 027 460  
 8728, email: [rachel@tapaweraconnect.org](mailto:rachel@tapaweraconnect.org)

**Tapawera Creative Fibre**

Meet: every Wednesdays, 10am-2pm,  
 Memorial Hall  
 Contact: Catherine Hesketh ph. 027 522  
 4266

**Tapawera Jujutsu Club**

Contact: Tony Hammersley ph. 5224609

**Tapawera Op Shop**

Currently closed

**Tapawera Playcentre**

Meet: Mon & Thur, 10am -12:30pm  
 Memorial Hall ph. 5224456

**Tapawera Rugby Football Club**

Bookings: ph. Judy Benjamin 5224445

**Tapawera Sport & Recreation Society**

Contact: Judy Benjamin ph. 5224445

**Tapawera Volunteer Fire Brigade**

Contact: Dean Millar Chief ph.  
 0279651399; Ted Oakly Deputy Chief  
 ph. 0210704033

**TAS / Community Library**

Mon-Fri 10:30am-1:30pm. Contact: Kelly  
 Library ph. 5224337/ext. 213

**TESSI**

Contact: Bruce Whyte ph. 5224550

**Visual Arts Society Tapawera**

Contact: Dallas Robinson ph. 5224984

**Yoga with Josie**

Wednesdays 6-7pm school music room  
 (school term only).  
 Contact: Josie Orr: 027 612 5813

**Wakefield Police**

Senior Constable Jamie White –  
[jamie.white2@police.govt.nz](mailto:jamie.white2@police.govt.nz)  
 Senior Constable Matthew Berquist –  
[matthew.berquist@police.govt.nz](mailto:matthew.berquist@police.govt.nz)  
 Sergeant Craig Clayworth –  
[craig.clayworth@police.govt.nz](mailto:craig.clayworth@police.govt.nz)

**What's on  
June**

- 3 Kohatu Life Group, 10:30am  
Wednesdays, Ph 0274 950 470
- 6 Chainsaw safety/repair  
workshop, 8,30am-3.30pm
- 9 Tapawera Talking Café, 10-  
11:30am, St Peter's Church
- 9 Digi Drop-in Session, School/  
Community Library, 11am-1pm
- 10 Flood debrief meeting, 5.30pm-  
7pm, Rugby Club Rooms
- 10 Art workshop meeting for those  
interested
- 11 Garden Club, 11am, Linda  
Milsom's home in Woodstock
- 16 TDCC monthly meeting, Rugby  
Club rooms, 7pm
- 20 Articles for Informer close 5pm
- 21 Tapawera and Valleys  
Historical Society Inc AGM,  
1pm, Stanley Brook Hall,  
followed by a look at "Farming  
through the decades in Stanley  
Brook"
- 25 Bible study, St James Church,  
797 Tadmor Valley Road, 6pm
- 28 Craft and Market Day, Village  
Green, 10am-2pm

**GP & Nurse at  
Tapawera Clinic**

(during school term time):

**GP clinics – Mondays**  
 9am – 12 midday

**Nurse clinic – alternate**  
 Tuesday mornings - phone  
 541 8911 for dates

**Wakefield Police**

Non-emergency line – 105 (can ask to  
 be put through to on-duty officer)  
 Emergency – 111