

## TDCC Update

This community is amazing! As of 22nd April, donations towards the Op Shop project include cash of \$2970, pink batts, doors and windows, vermin-proofing materials, and washing powder. On top of that, \$650 has been raised through raffles, and donations for op shop old stock has raised another \$185. All this on top of the myriad of offers to help with everything from cleaning up, to clearing out. When this community decides something is worth doing, you really put your hands up!

Actual building work should start early May, to be finished within the month.

In another show of how this community works, preparations for ANZAC day went very smoothly, and TDCC would like to thank everyone who got involved. Check out our website or Facebook page for photos etc.

**Admin staff:** We have, at last, achieved most of the transferring of admin to the new committee, including updating signatories etc. Bureaucracy certainly makes for some interesting challenges!

Our eftpos machine has been sitting idle whilst the op shop is closed. The eftpos company has offered eight months free hire, in exchange for a 36-month contract. Because we are a Charity, they have provided a discounted price of \$60 a month. Assuming the op shop is open three days a week, that works out to just \$5 per day, so we have accepted their offer.

**Community Centre:** We've learned that a building's seismic rating is based on the weakest element. We have one issue at 20% which means the whole building is at 20%. We are working on getting a second opinion re the rating, but in the meantime, where necessary, a few folk are being allowed to enter the building for specific purposes, having signed a waiver which outlines the risk.

**TDC plans for Tapawera:** You will have seen that the old works depot in the village is for sale. Government directed all Councils to divest themselves of any non-performing land, to free up residential space. We have let John Gully, TDC Ward Councillor, know that we are disappointed in the lack of community consultation before this decision was made.

In late May, TDC submissions will open regarding Plan Change 81, which includes re-zoning a small parcel on the main road in the village into residential. Contact TDC or email [tapaweratdcc](mailto:tapaweratdcc) if you would like more info.

**We have our very own website!** Check out [tapaweracommunity.nz](http://tapaweracommunity.nz) for links to groups and businesses in the area, plus a whole heap of info about what we are up to. The site also offers a contact form, so you can send us comments, queries, feedback and anything you want us to hear or action. We've also made it phone-friendly so you can access the site from almost any device. Go on; give it a go!

**Facebook:** The community is welcome to bring their enthusiasm to TDCC's Facebook page, including photos of what makes our district special e.g. autumn is here, so do share those colours.

**Connecting:** Three of the TDCC committee met with representatives from Tapawera Connect, in an effort to gain a working relationship and to understand their role, as they see it. We asked that all future communications to the community regarding the proposed hub be factually correct, be balanced, and have room for a wide variety of views.

**Bike stands:** We have added two small bike stands near the food carts in the village, with more to come, including, hopefully, electric bike recharging stands.

**Tadmor Hill:** We, along with John Gully (Ward Councillor) continue to advocate strongly to get the hill road fixed. There was some consternation that road painting was being carried out in the dark recently in the very area which will be torn up during repairs. John is looking into why this apparent waste of resources occurred.

**What's happening in your group?** You can now send group's newsletters for sharing on our website. Recent examples are TDC's monthly update re Tapawera, a Hospice newsletter, and the Motueka Catchment's interesting newsletter which includes news and invitations to join upcoming events. Do check these out.

**Tapawera Doctors rooms:** Many appointments are cheaper there, subsidised by Government. Save yourself fuel, time and fees by using our local clinic. If the lack of sound-proofing bothers you, turn on the radio in the waiting room before your appointment; it's amazing how it blocks any accidental noise. When you phone Wakefield to make an appointment, be sure to ask for it to be at Tapawera, unless it's urgent or requires a special procedure. You can still ask for your Doctor, to see them when it's their turn to be in Tapawera.

Heartfelt thanks from TDCC to Heather McKenzie, Nicholas Moule and Elly Shaw for their very welcome donations of Pink Batts for the Op Shop renovation project.

# COME TO A TALKING CAFÉ

Connect with your community



Talking Cafés are an opportunity to meet people, make new friends and find out more about activities, services and support in your community.  
Pop in for a quick cuppa, or stay for a longer chat.  
All are welcome, no bookings required.

Upcoming Talking Cafés  
St. Peter's Anglican Church, Tapawera  
2nd Tuesday of the month,

Tuesday, 12<sup>th</sup> May 10.00am-11.30am  
Tuesday, 9<sup>th</sup> June 10.00am-11.30am  
Tuesday, 14<sup>th</sup> July 10.00am-11.30am



For more details:  
wellby.org.nz  
or phone (03) 546 7681



## WANGAPEKA QUARRY

AgLime, Gravel, Big Rock, Decorative Chip  
Ph 021805476

Wangapekaquarry2025@gmail.com  
140 Wangapeka Plain Road Tapawera

### RURAL POST, RD 2 Wakefield

Contact Nick & Jackie Costley for all your RD 2 Wakefield postal needs.

Including prepaid envelopes, stamps, courier items and local freight from Wakefield, Dovedale and Tapawera. Prescriptions from Wakefield.

**Phone 0275418581**

Mark & Tania Gill  
T/A MTJ Transport  
RD2, Nelson  
NZ Post Rural Contractors  
Servicing  
Motupiko-Korere-Kikiwa-Tophouse-St Arnaud-Glenhope

For all your Postage, Milk & Courier Freight  
Operating 3 Days Weekly  
(Monday-Wednesday-Friday)  
Departing Nelson 8.00am  
Phone 546 6295

### Material & adverts for Informer

All material is to be sent to either:

Informer, PO Box 15, Tapawera, 7055  
or email- [tapawerainformergmail.com](mailto:tapawerainformergmail.com)

To be received by 5pm  
20th of the Month

If emailing a word document please send in Word as an attachment.

If sending an advert please save as a jpeg before sending.

Please check your emails to see your article/advert has been received as sometimes there needs to be alterations.

### Advertising rates for Informer

Standard ad	Pay monthly	Pay annually
1/4 page advert	\$39	\$343
1/2 page advert	\$54	\$475
Full page advert	\$78	\$686

Adverts that require editing may cost extra

The Informer is produced and published by the Tapawera and Districts Community Council, PO Box 15, Tapawera, 7055;  
email: [tapawerainformergmail.com](mailto:tapawerainformergmail.com)  
Circulation 635  
Editor: Gill Hammersley  
The Editor and Publisher try to ensure information published is truthful

and accurate, but do not accept any responsibility for errors or omissions, or for any consequences of readers' relying on the information published. Opinions expressed by contributors may or may not be endorsed by the Editor or Publisher.  
All material submitted, whether editorial or advertising, is accepted at the discretion of the Editor and the Publisher.

## TDCC Update cont.

**Firewood for those who need it:** TDCC is aware that we have folk in the community who need firewood or other assistance, especially as winter approaches. Whilst we don't currently have a scheme in place, we encourage anyone who needs help, or knows of someone who does, to let us know so that we can see what can be done. Everyone has had a turn at needing help in some way; if it's your turn, please say so. There are folk who are willing to assist. Don't be shy.

**John Gully, Ward Councillor,** gives a report to each of TDCC's monthly meetings, and takes questions from the floor. He's a brave man, as the issues can be gnarly. However, he often agrees with the speaker; just why do contractors cart rock from Takaka Hill when there's good quarries locally? Why do we have to fill in forms to get what should be regular maintenance e.g. culvert clearing, done? When will our rates calm down? The good thing is that John takes it on the chin, shows a lot of empathy, and answers as clearly as he is able. If you have a TDC question for him, come along to the monthly TDCC meeting, 3rd Tuesday of each month.

**Survey:** During the April monthly meeting TDCC received a privately-run survey which was taken late last year, regarding the proposed hub. There were 222 local residents' signatories against the hub, two for, plus two against who do not reside in the draw area.

**Annual Plan:** TDCC decided to put a submission in to the TDC Annual Plan consultation. We remain neutral regarding the proposed hub, but do support a pause on the project due to the communication issues and conflict within the community. The amount of incorrect information floating about our community remains a concern; even simple things like the current sketches of the proposed building showing a sign advertising the Op Shop when we've said very clearly that the Op Shop will remain on our own site at 95 Main Road. We understand that any pause jeopardises the DIA funding, but feel it's more important at this time to have a united community.

But of course the Annual Plan is about so much more than a single project. We do hope that you have taken the opportunity to have your say on what TDC is looking to spend resources on in the next year.

So, as you can see, your new TDCC committee is working smart to achieve some of the aspirations for this community which have been asked of us. Do get in touch: email [tapaweratdcc@gmail.com](mailto:tapaweratdcc@gmail.com), check out [tapaweracommunity.nz](http://tapaweracommunity.nz) or look us up on Facebook.

And do stay warm!

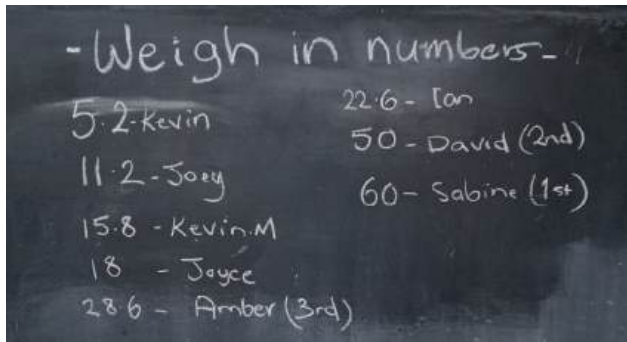
Thank you from TDCC to Rachel & Jeffrey Moffitt for donating the carpet for the Op Shop renovation project.

## Stanley Brook Pumpkin Competition

Despite a damp and drizzly day, the annual Stanley Brook Pumpkin Competition once again brought the community together in true country spirit. While the rain may have kept some people at home, those who ventured out were rewarded with a fantastic display of pumpkins in all shapes and sizes, along with plenty of laughter and friendly competition.

Numbers were a little lower than expected this year, but that only meant one thing — spot prizes were plentiful! Thank you to 185 for plenty of vegetables, the 4 Square in Tapawera for ice cream vouchers, Molly's Coffee for coffee vouchers, Josie for a massage voucher, Sabine for a horse riding voucher, the prizes for first and second winner. Many attendees went home with more than one little something extra, adding to the fun and excitement of the day. From giant pumpkins to quirky, uniquely shaped entries, there was plenty to admire and celebrate.

Winning pumpkin with 60 kg was Andrew and Sabine  
Second winner with 50 kg was David  
Third winner with 28.6 was Amber



A big thank you goes out to everyone who braved the weather to take part, as well as to the organisers and supporters who made the event possible. Rain or shine, the Stanley Brook Pumpkin Competition continues to be a highlight on the community calendar, and we are already looking forward to seeing even more entries next year.



# Flood risk in the Motueka Catchment

A practical community workshop



**Thursday 28 May**

**11:00am - 2:30pm**

**Shedwood Hall, Tapawera**



Do you live or work in Tapawera and worry about the next flood?

Come to this workshop covering:

- latest flood science from Dr Emily Lane (NIWA)
- local experiences and perspectives
- flood risk management approaches
- practical next steps for households, communities, and decision-makers

**REGISTER NOW**

[surveymonkey.com](https://www.surveymonkey.com/r/KXTCJJX)

[/r/KXTCJJX](https://www.surveymonkey.com/r/KXTCJJX)



## Preserving for Food Resilience

Did you race out to stock up on essentials when the Gulf War started? I did, for the dual purposes of ensuring we have basic ingredients for preparing simple meals over an uncertain food supply period, and also to minimise car use when fuel gets scarce and even more expensive.

It's nearing the end of my preserving season now, always a busy time. Our household relies on bottled fruit, tomatoes, chutneys/relishes and other easily preserved food as a way to store food for future use and add variety to meals. A huge benefit is that once it's done, preserved food needs no more power during storage or before using. Preserving increases your food resilience, one way you can prepare for future shortages.

Food resilience is one of Tapawera's goals in its community plan, and one reason why we have a community garden. By definition, food resilience is a result of 'ensuring consistent access to nutritious, local, and sustainable food. It focuses on reducing reliance on external supply chains, fostering local production...' (web reference, AI definition). It's a hot topic in the news right now (writing this in mid-April), with the impact of the Gulf War on many aspects of NZ's supply chains. The war suggests a potentially bleak future ahead, with food as one of its casualties - future shortages of food imports, and fuel to grow and distribute food, will all affect how much there is to buy and how affordable it is. Preserving fruit and veg when they're cheap and readily available is one way you can prepare for future shortages.

It's always a good feeling to know you have the skills to prepare meals from preserved basic foods - for example, fruit, tomatoes - and this is one reason a Tapawera community preserving workshop was offered here in late March. Its purpose was to share some of the ways to preserve autumn fruit and vegetable harvests that will provide food months later. For those who attended the workshop, building new community connections with others was an additional bonus. Six enthusiastic participants made feijoa- and tomato-based chutneys and relishes, and feijoa jam, and happily took home samples of each.

The late feijoa season created a few planning difficulties for a preserving workshop advertised as 'focus on feijoas and tomatoes' but thanks to fruit offers from several in our community, alternative plans were possible. Many thanks to those who assisted in some way to the workshop's success - my neighbours for frozen fruit donations or freezer space in case feijoas weren't available, to Steve Udy and his Nelson Tree Crops colleagues who donated feijoas and lemons, and to Tapawera Area School for use of its teaching kitchen - all good examples of great community assistance and generosity! And many thanks to the enthusiastic group who came to the workshop, who shared their knowledge and preserved chutneys and jam and made

the workshop effort worthwhile. Finally, of course, to Della for her trademark efficient administrative assistance.

Heather Spence

To every person who purchased a raffle ticket in support of the Op Shop project, thank you! The raffles raised \$650 very quickly, providing a terrific boost to the budget. The TDCC committee appreciates your support.



Our April meeting was a delightful, sunny – even hot - time spent exploring Willow Bank Village in Wakefield after a beautiful morning tea served on vintage china in their lovely hall. Christina and her family have created a fabulous array of historic recreated buildings that brought back many memories for most of us. One young lass attending with her grandmother was intrigued at the old 'pay phone' with a dial instead of a keypad and really had no idea how to hold the receiver to speak/listen when another phone was answered. So much has changed in such a seemingly short time, but a lifetime for others!

We had a good number of people in attendance and after a couple of months visiting places where we couldn't do our usual auction, we spent a long time working through the fabulous offerings of propagated or thinned plants on offer. There was quite a bit of competitive bidding and most people went home with lighter pockets and gardening chores to attend to!

We were all very saddened to hear of the sudden passing of one of our original members, Jean Wood, who has always supported the club, attended meetings and offered her wealth of knowledge of plants and their preferred habitat. Jean also always impressed us with the amazing garden she and husband, Paul, have developed over many years in Glenhope.

Our next meeting on Thursday 14th May will be at their garden, as Paul was still keen for us to keep the date that had been set many months ago. We will indeed be celebrating Jean's amazing creative spirit as we share together in their special space. The meeting starts at 11am as usual. There will be an auction and raffle, so bring your spare cash. Also bring your lunch, including your own Thermos (translation: hot beverage safety containment receptacle), chair, hat and midgey spray if you are of the tasty variety.

Janine Leeden

Tapawera 4 Square - Thank you for goods to vermin-proof the Community Centre as well as donating washing powder for cleaning op shop items. TDCC appreciates not only those, but also that the 4-Square covered the cost of the printing for ANZAC day.

## **Kickstart Your Chainsaw Skills!**



At this workshop you will learn:

- \*How a chainsaw works**
- \*Safety**
- \*Different cuts**
- \*Maintenance**

8:30am - 3:30pm, Saturday 6<sup>th</sup> June

Training will be done locally, Record of Learning provided

\$30pp (funding available if required)

You will need your own steel cap boots and lunch

Spaces are limited, so contact Della to book 027 479 4420

or [della@tapaweraconnect.org](mailto:della@tapaweraconnect.org)

## **Dehydrating Food Workshop**



Dehydrating is a great way to help become food resilient, ensuring a longer shelf life of food, while maintaining flavour and nutrition. We have a couple of locals who will share their tips and tricks.

**10am - 12pm, Tuesday 5<sup>th</sup> May**

**St Peter's Church**

**If you have any questions or would like to register your interest, contact 027 479 4420 or [della@tapaweraconnect.org](mailto:della@tapaweraconnect.org)**

## Tapawera Community Connection Update – May 2026

Do you want to connect to others in our community? Read on for information on what's been happening in our village and more fun ways to get involved.

### Workshops

#### Preserving Workshop



Heather Spence ran a very successful and productive preserving workshop in April, covering four different recipes using tomatoes and feijoas. Thank you Heather, it is great to learn how to be more self-resilient around growing and preserving our own produce.



#### Dehydrating Workshop – Tuesday 5<sup>th</sup> May, 10am to 12pm

Dehydrating is a great way to help become food resilient, ensuring a longer shelf life of food, while maintaining flavour and nutrition.

We are running an informal workshop at St Peter's Church, Main Road Tapawera, on the 5<sup>th</sup> of May, where locals will be sharing their tips and tricks with samples on hand. No previous experience is required.

Light refreshments will be available. Come along to learn more or just to enjoy the connection with others.



#### Chainsaw Safety / Repair – June 2026

We are delighted to offer a Chainsaw workshop on Saturday 6<sup>th</sup> June, 8.30am to 3.30pm. This will be held locally, and a record of learning can be provided.

The workshop will cover how a chainsaw works, safety, three different cuts and basic maintenance. The cost is

\$30pp but funding is available if required. You will need steel cap boots, but all other gear is provided. **Please let me know as soon as possible if you would like to be a part of this**, as numbers are strictly limited.

### Flood Debrief and Future Resilience

There are two meetings scheduled in May and June, related to last year's flooding events. Both are open to the public and focussed on Tapawera.

#### 1. Thursday 28 May, 11am to 2.30pm Shedwood Hall – A practical community workshop focussed on Flood Risk in the Motueka Catchment.

Hear the latest science and explore how we can reduce future risks to our homes and property. Free lunch. **Scan the QR code or visit [surveymonkey.com/r/KXTCJXX](https://surveymonkey.com/r/KXTCJXX)** to register



#### 2. Wednesday 10 June, 5.30pm to 7.00pm – Flood Debrief Meeting.

An opportunity for the Tapawera Community to meet with our local Emergency Planning Team and other response and recovery partners, to look back on the 2025 flood events and consider what went well and where there are areas for improvement. Location TBA.



### Ride Sharing

With fuel costs skyrocketing and us being an isolated rural community, it is more important than ever to work together to share transport, or network to pick up items. This also cuts down on emissions and builds connections with other locals.

TripPr NZ is easy to set up and navigate, as a driver offering seats or willing to pick up items, or a passenger looking for a ride. The driver can state how much financial contribution is required, if any, and how many seats they have available. Drivers can easily be contacted by clicking on the message icon. You are not committed to doing return trips and payment is all done by the app. **Jan or I will be at the coffee cart on Wednesdays from 10am to 12 noon if you would like help to download and use this app.**

### Support

If you or anyone you know needs any assistance or support, talk to me and I can point you in the right direction.



**Della Webby**, CLDP Community Connector.

[della@tapaweraconnect.org](mailto:della@tapaweraconnect.org) / Phone: 027 479 4420

Many thanks to Roger Bint for gifting the windows for the Op Shop renovation project. The TDCC committee is delighted to receive these.

## HANDYMAN

- \* General property maintenance
- \* Clean out/tidy up
- \* Water blasting
- \* Gardening
- \* Chain sawing
- \* Repairs
- \* Demolition
- \* Any farm work

Fair hourly rate. Honest and hard working.

Local references available.

Please enquire to Jeremy Ellis:  
(03) 522 4460 or 0276697744



## TAPAWERA PLUMBING AND GAS

*Your Local Plumbing & Gas Experts*

Need a reliable plumber or gas fitter?  
Look no further than **Tapawera Plumbing and Gas!**

Based in Tapawera and servicing the surrounding areas – including Murchison.

We offer trusted, professional service with a friendly, local touch.

- General plumbing repairs & maintenance
  - Gas fitting & hot water solutions
  - New builds & renovations
- Prompt, tidy & dependable service

**Contact Diego Fieldsend**

**Phone: 0223623195**

**Email: admin@tapaweraplumbingandgas.co.nz**



## Sheds & Cabins Built for Rural Living

From farm sheds and workshops to cabins and lifestyle buildings, ShedPros builds practical structures designed for rural properties.

Call Nathan Today  
**021 277 6775**

[WWW.SHEDPROS.CO.NZ](http://WWW.SHEDPROS.CO.NZ)





**WAKEFIELD & DISTRICTS**  
COMMUNITY HEALTH CENTRE

## Flu Vaccinations and Covid Boosters

Just a reminder that we are now administering our flu and covid vaccinations. The best defence against the flu is to get a yearly flu vaccine. Flu vaccines are available for anyone aged over 6 months.

Many people are eligible for a free flu vaccine; you can check with us. **Everyone over 65 years of age can have a free vaccine.** Covid Boosters are free to everyone over 30 years of age.

Non-funded flu vaccines will be available at the same time. FLUAD@Quad is a non-funded flu vaccine available to the over 50s. This vaccine has additional ingredients that helps create a stronger immune response and costs \$50.00

Flu and covid vaccines can be safely given at the same time.

## Blood Pressure Monitors

A friendly reminder that if you have one of our Blood Pressure monitors and it is overdue for return, please can you return it to us as soon as possible. We have a waiting list for our monitors, and it is important we can share this resource with patients that need it.

## Not turning up for your appointment

We are seeing an unfortunate rise in some patients who are not turning up for their booked appointments. This is unhelpful for a number of reasons:

- Your own health and wellbeing & continuity of care
- A missed opportunity for other patients to use the appointment
- Financial impact on the Practice

We are one of very few practices in the region **who do not charge for missed appointments**, as we try to maximise engagement with our patients and minimise financial barriers. If cost is an issue for missing your appointment, please feel free to discuss this with us. Please speak to your GP about this at the time of your appointment.



TDCC extends a huge Thank you for the heaps of help from the great people of Tapawera in all aspects of the ANZAC day preparations, in addition to the clean up of the Op Shop, and the current transformation of the garage. We are deeply grateful for your support.

## Working with Birds Helps us Grow Native Forest



Participants emerging from a QEII native forest block to a recently planted extension block during the April 'Forests that Last' workshop held with support of local catchment groups & NZ Landcare Trust and featuring a very informative presentation by newly arrived local, Wayne O'Keefe of Tanes Tree Trust.

One key standout point was that birds rarely travel more than 200m in transferring seeds. So to support growing a native forest and benefit from bird-transported natural native regeneration, the seed source needs to be close. The other key standout fact was that kereru, the native pigeons, are the only birds that eat the big podocarp seeds like kahikatea and miro and can carry them up to 1.5km away. So they are a very important keystone bird to support in the catchment to help with naturally increasing the number of our bigger native trees e.g. for the future in the plantings that are being done in recent years. One way to support them is to plant plants that attract pigeons or plant kowhai.

TDCC is very grateful to the following folk and businesses who have very generously given cash donations towards the Op Shop project:

- Goldpine
- Stuart Davis
- Bushend Farms
- Fulton Hogan
- Donna Luxford & Tim Holmes



## Frozen Berries For Sale

Raspberries - \$6.00/ 500gm bag

Blackberries - \$5.00/500gm bag

Blueberries - \$6.00/500gm bag

Phone Sue 0272226843

While stocks last



## Tapawera Netball Club April News

It is that time of year again! You can expect to hear plenty from us over the coming months as we gear up for an incredible season. This year is particularly special as our club reaches new heights and continues to expand.

We are thrilled to announce a significant growth in our ranks:

**Senior Women:** We are fielding two teams this year - a competitive squad and a social team (who we expect will be just as competitive on the court!).

**Youth Development:** Our Secondary School girls' team returns, and we are introducing a **brand-new Upper Primary team.**

**The Future:** We are also launching a **Future Ferns team**, establishing wonderful new depth within our club. Perhaps the most exciting news is the overwhelming support from our local community. We are proud to announce that every single one of our five teams has officially secured a local business sponsor! A massive thank you to our partners for coming on board - your support is the backbone of our growth. Stay tuned as we dive into a season of fresh energy and community spirit!



### Tapawera Blue Rock Hops Team

Thank you to our sponsor, **Blue Rock Hops Ltd**, from **Glen & Sara and Brian & Sarah Clayton.**

This team consists of Emma Bannister, Jada Jelinek, Renee MacDonald, Laura Fry, Kiahna Telfer-Eggers, Shakaia MacDonald, Toni Derbyshire and Tessa Fleming.

**Coach:** Belinda Grice

**Manager:** Mel Heine

*"Excited for the start of the season with a few new faces in the team. The team is training hard and a great vibe in the team. See you courtside, May 2nd!"*



### Tapawera Fry Contracting

Thank you to our sponsor, **Fry Contracting Ltd**, from **Kevin and Andrew Fry.**

This team consists of Aroha Collins, Kiana Collins, Shaye Leah, Lane Williams, Shimiela Streeter-Mantell, Geinty Wells, Lissie Anglesey, Morgan Robinson, Rachel Moffitt, Shimiela Streeter-Mantell and Tami Wi.

**Coach:** Laura Fry

*"Our team is coming together nicely! I'm excited for the season to start and see how far we can go. First game for the grading round is May 2nd! Time to be confirmed."*



### Tapawera Bush End Farms Team

Thanks to our sponsor, **Bushend Farms Ltd**, from **Phil & Jocelyn Riley.**

This team consists of Alyse Clarke, Paige Derbyshire, Keetah Jones, Atlanta Linstead, Kasey Mitchell, Breeze Streeter-Mantell, Ella Walker, Jaidyn Webb, Maddy Pronk, Natalie Doig and Holly Bright.

**Coach:** Toni Derbyshire

**Manager:** Vanessa Webb

*"Our Bush End Farms team is a great combination of fresh new energy and familiar strengths with the joining of both college teams. I'm excited to see how this team grows together. Especially working towards the SSIS tournament at the end of the season."*



### Sivad Farms

Thanks to our sponsor, **Sivad Farms Ltd**, from **Stu and Paula Davis.**

This team consists of Aaliyah Winwood, Aaliyah Doig, Ayarna Linstead, Charlie Meade, Emily-Rose Coleman, Evanna Carr, Marlise Porthouse, Marlee Omlo and Wednesday Moran.

**Coach:** Atlanta Linstead

**Manager:** Tania Coleman

*"This is our first year playing Saturday netball. We are really excited to see how everyone can grow together and learn as we go."*



### Nelson Hops New Zealand (Korere/Mt Arthur)

Thanks to our sponsor, **Nelson Hops New Zealand**, from **Korere Hop Farm and Mt Arthur Hop Farm.**

**Manager:** Tania Coleman

This team consists of Ashley Irvine, Bella Williams, Chelsea Reilly, Cooper Anglesey, Isobella Bolton, Izzy Mason, Mackenzie Booth, Meeka MacDonald and Sierra Winwood.

**Coach:** Lissie Anglesey

**Manager:** Tegan Cornell

*"We are all excited for the start of the season! The kids have been training hard on and off the court! Looking forward to watching this team grow as the season goes on. First game May 6th!"*

Last but not least, a huge thank you for the **QUIZ NIGHT!** We are so grateful to everyone who attended, those who donated prizes, and especially to Committee Member Belinda Grice for organizing the event. Your support was incredible. It was such a close result, with bonus and booby points creating total havoc on the leaderboard!



# Tuffnell

2017 LIMITED

## Plumbing Drainage & Gas

**LOCAL • RELIABLE • EXPERIENCED**



- Leaking Pipes & Taps
- Kitchen & Bathroom Renovations
- Hot Water Pressure Upgrades
- Solar Hot Water
- Gasfitting
- New Housing & Commercial
- Drainlaying & Wastewater
- IQP Backflow Testing
- Blocked Drains - CCTV Camera Inspection
- 24 Hour Emergency Service
- Master Plumbers Guarantee
- Free Quotes



**Certifying Plumbers, Gasfitters & Drainlayers Since 1915**

**Call 03 543 8090**

**0800 129 683**

**info@tuffnell.co.nz**

**www.tuffnell.co.nz**





## Tapawera Netball Club April News cont.

We would like to extend a special thanks to the following businesses and individuals for their generous contributions:

Dog & Country, Real Family Photography, Chemist Warehouse, Superliquor, Wet & Forget, Dollarama, N-Tech, Unichem Pharmacy, Mitre 10, Molly Coffee, Specsavers, Daymans, Armadillos, Squires, Chalida, Teaology, The Honest Lawyer, Quinneys Bush, Liquorland, Summit, Matthew Eyecare, Pacific Radiology, R&J Batteries, Kainga Kai, Sherry River Honey, Wakefield Pharmacy, Wakefield Health, Repco, Blairs, Tapawera Auto and Lissie Anglesey.

**20th June is Tapawera Netball Club Day**, whereby we do a duty with another club. It entails wearing a vest and patrolling the courts, helping out if there are any issues. You do it in pairs. Reach out to us closer to the time to volunteer once the draw has been set, if you can spare an hour before or after the game.

We have a **Tapawera Netball Club (@tapaweranetball) • Facebook** where the coaches write amazing reports that will update you on how our teams do throughout the season. Club email is [tapaweranetballclub1988@gmail.com](mailto:tapaweranetballclub1988@gmail.com)

Susan Fenemor

Club President/Life Member

## The Lady Tradie

### Has your husband got a round to it!

Spring has sprung

and the grass has riz !

Do you wonder where a handyman is ?

Can't get one ?

Then call " Jen the Lady Tradie "

for all your outside spring clean-up jobs

\* Gutters full of leaves;

\* Lawns that are starting to bolt;

\* Waterblasting those slippery paths

and all that spring growth that just might get away on you.

**\* Local Person \* Referees Available \***

Consideration & discount shown towards Senior Citizens

**FREE QUOTES**

**Contact Jennifer**

Phone or text: **027 544 2663**

After hours/leave a message: **03 522 4453**

Email enquiries to: [jentheladytradie@gmail.com](mailto:jentheladytradie@gmail.com)



**Senior's Snippets** with Janine Leeden, 0277525975

I'd just like to say that while my role is supporting Seniors in our community with access to services, activities and education, some of the activities I host regularly are indeed open to any adult who may be interested in joining others for some connection. You certainly don't have to be 65+. In fact, it was a delight to have one of our regulars turn up with a young grandchild, Theo, recently as a 'one off' to Sit and Be Fit as we adapted some of our exercise activities so that he could join in too. There were lots of laughs, especially at the concentration on his face as he tried to follow along with our poi fun. It did us all the world of good.

**Sit and Be Fit** continues every Friday morning with fun and fitness of the mind and body paramount. Keeping it simple at 10-11.30am.

**Wellby Talking Café is for everyone** and is held at St Peter's Church on the 2nd Tuesday of every month. For **May the date will be Tuesday 12th.....10am-11.30am**. If you work from home or are just sick of looking at four walls and want to connect with others in your community, you are welcome to come along! We encourage friendly positive discussions and encourage everyone to feel heard and valued. Last month we saw a photo book that someone had put together of their flood experiences in Tadmor Valley last year, as well as seeing some wonderful photos on a fancy phone thingy of another person's very recent expedition on the Milford Track. Many of those photos would look fabulous on canvas!

**Tea and Talk will be on Tuesday 26<sup>th</sup> May** at St Peter's Church from 10am-11.30am, for a nominal cost of \$3.. Morning tea is provided. This month is a free workshop session provided by Nelson Bays Primary Health, presented by our local Health Improvement Practitioner, Nicole Willcox. Nicole will continue on the theme of healthy ageing and be looking at Brain Health. What we hope to cover::

- Movement & brain function
- Sleep & mental clarity
- Stress & the brain
- Food & energy
- Connection & staying sharp

It would be great to see you come along and join in any one, or all these events. There's always a warm welcome and some good craic!

A big thank you to Charyn Mackenzie for donating the ranch slider and some windows to TDCC for the Op Shop project.

# THE CHURCH BELL IS RINGING



Daylight Savings means we are meeting in the dark in the paddock. **BUT there is light!** The light of God's Word and the light of "candles" (non-flame), torches, lanterns. Lovely ambience. It's also time to bring a blanket and maybe a hottie. It is cosy as we tuck into the Word of God together. Perhaps we'll support local and go to Pizza Plus after.....we'll vote at our April meetup - byo picnic or Pizza Plus (I know my vote:-).

Last Tuesday of every month  
 St James Church, 797 Tadmor Valley Road, 6pm.  
 Followed by a (BYO) picnic tea at 7pm or Pizza Plus  
 BYO blanket and hottie if need be :-).

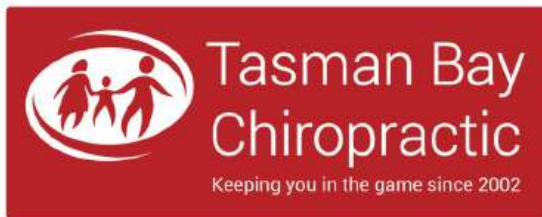
## AND YOU'RE INVITED...

All welcome. Come even if you are not a believer but want to know more. Or come if you are a believer and join us digging into the bible. I love the Word of God - it literally saved my life.

Correct email below, sorry I posted the wrong spelling last month.

Feel free to reach out  
 Tania O'Meagher.

Pastor, City Gate Church. Nelson  
 M: 021803411 [www.thewordofgodssavedmylife.com](http://www.thewordofgodssavedmylife.com)



Referrals, families and  
 all new clients welcome

Visit our website or call for more information



03 544 4554 Monday-Saturday  
[tasmanbaychiropractic.co.nz](http://tasmanbaychiropractic.co.nz)

Find us on  



**Tapawera Area School**

Kia oro

A communication from myself to thank you for your help and support over this first term of the year. As we enter the last four days of the term, I believe we have had a very successful and settled term with some excellent work and progress across many areas. Our Board has settled in amazingly and is focused on further improvements within the school. Linda Tame, as Limited Statutory Manager, has provided great support to our Board and will continue to do so on the return from sabbatical of Sarah Coard from Friday 2<sup>nd</sup> April.

Our academic progress has been very impressive with all Year 11-13 students already gaining significant numbers of NCEA credits, many of them gaining up to 40 credits this term with this progress. Our Year 10 (and some Year 9) students are ready to sit their NCEA CAAs (Centrally assessed assignments) early in term 2, with pre testing and work showing they are in a good position to expect positive results. Our Year 1-2 phonics progress is also going very well and the many new curriculums and syllabus in the Year 3-10 areas, by the Ministry of Education and Government is well planned and staff are constantly working hard in all of these areas.

Discipline and engagement across the school has been extremely encouraging throughout the term. This is monitored at the school through our student management system (Helix) and shows a steep reduction in negative incidents and a large increase in positive notifications. I am not naïve to believe that everything is perfect but both students and staff are working extremely hard together and this shows in the academic work completed and achieved and also the "hidden curriculum" of social skills, empathy, support and concern shown by all groups.

It has been a pleasure to interact positively with our community over this term and get to know many of you. There are some obvious personal highlights from my perspective, an extremely successful TOSI Tournament, which showed our school and community in a very positive light, not just in winning the tournament but the way the community came together to host the event and the many complex situations that this required solving. Again, I thank everyone involved in this from students, coaches, billets, sponsors, staff, helpers and parents. Without you this could not have happened.

Finally, a few personal thankyou's from myself. Gemma Walsh and Tanya Snackers are tremendous leaders within the school, working very long hours with patience, skill and dedication to our whole student and whanau population. Becky Knight as the new Executive Officer has made a great start with our school systems and financial systems and has been awesome to work closely with. They are incredibly well supported by a strong, well-qualified and

hard-working staff, both teaching and non-teaching. To the students, it has been easy to build very positive relationships with you all, from Year 1 to Year 13 and to hopefully guide you on to further success. With this start to the school year and the great work being done by all, the ongoing consistent positive approach from the whole school community, I am sure the school can continue to show how strong Tapawera Area School can be and what a positive future it has ahead of it. I am sure we can look forward to returning to be a successful school, well on track for further success both academically, culturally and socially. I am looking forward to continuing in my position as Principal of the school in the coming term and maintaining this amazing progress.

I would also like to take this opportunity to emphasize our huge improvement in attendance in Term 1. Our attendance levels have risen to be highest at our school for 5 years. Thank you to our students, whanau and community with your support in this crucial element of a successful school. It has been a privilege to come into your school and community and share my experience and help this awesome kura.

Andy Ashworth - Principal



### **Athletics Day**

The annual Athletics took place with a great turnout and some impressive results along the way. The House competition was well contested starting with the 3000m the previous week.

**Hunter Page** set a new record for U19 boys with a time of 10.45mins beating the time of 10.57mins set by Dylan Morris in 2010.

On the day itself, **Breeze Streeter-Mantell** broke records in the 200m and 100m. In the 14-15 girls 200m she improved her open record of 27.50secs to 27.34secs and in the 100m she broke a record from 1991 set by Leah Morgan of 14.27secs by setting a new standard of 13.12secs.

It didn't stop there, **Levi Davis** had an excellent run in the 800m setting a new standard of 2.29.29mins beating a record set by Johnny TeTau in the year 2000 of 2min 30.49.

In the House event **Motupiko** did the double with first place in both the performance and participation categories.

'TAPAWERA THROUGH THE LENS'

# Photography Competition



ENTER UP TO 3 PHOTOS TOTAL AND BE IN TO WIN PRIZES ACROSS THE THREE CATEGORIES

Entries close Friday 12<sup>th</sup> June.

Entered images will be professionally printed on A5 card & exhibited at **PIZZA PLUS** throughout the month of July. Judges will be independently appointed from within the community.

FOR MORE INFO, OR TO SUBMIT YOUR ENTRIES, EMAIL [phoebe.quinlivan@gmail.com](mailto:phoebe.quinlivan@gmail.com).

PHOTOS MUST FEATURE REAL LOCAL PEOPLE OR PLACES  
NO AI GENERATED IMAGES ALLOWED



## Regional Athletics

This year we managed to take a large team of 10 athletes. There were a number of notable performances during the day held at the Saxton Fields Track.

**Logan Walsh** managed a third place in the Triple Jump, **Joseph Butcher** was third in the U19 boys Discus and **Breeze Streeter-Mantell** was third in the U17 girls 200m.

The girls 4 x 100m relay team finished in second place in the U17 girls' category finishing behind Marlborough girls. This team consisted of **Alyse Clarke**, **Kiana Collins**, **Mela Jelinek**, who ran an excellent bend, and **Breeze Streeter-Mantell** who secured our position.

**Levi Davis** in his first competition finished third in the Triple Jump. **Harry Butcher** in his first competition finished second in the boys U15 Discus with a throw of 25.76m.

In the U19 Javelin **Jada Jelinek** finished first in the Javelin with a throw of 26.51m. **Breeze** went on to set new records at this event in the Triple Jump coming first with a new personal best of 10.18m and coming first in the Long Jump with a new best of 4.92m

This meant that Harry, Breeze and Jada all qualified for the South Island competition which was to be held on the weekend after the TOSI tournament which was always going to be a big ask.

### Breeze Streeter-Mantell

For over a decade, Tapawera has had a number of notable jumpers in Athletics. We have been represented at South Island competition and National competition. This goes back to Chris Brake with his three gold medals at the National competition in 2013, Tess Haunch with placings at South Island and National level in Triple Jump and more recently Bronco MacDonald with a Regional record and South Island placing in the Triple Jump. Last season Breeze started her journey with success in both the Long and Triple Jump. She has set new school records and achieved Regional success in both the Long Jump and Triple Jump setting new personal bests along the way. Breeze has never been involved in Athletics in a formal way and as a natural talent she has worked on her technique on our school field and developed her fitness alongside other sports including preparation for TOSI tournament.

This year, she was met with the daunting task of competing in Christchurch after a week of sporting competition here in Tapawera. After the presentation on the Friday of TOSI she set off for Christchurch to see if she could continue her journey. It was with great delight that she was able to perform on the Saturday with a personal best in the Triple Jump of 10.24m in the U17 age group finishing in third place. This was an outstanding outcome against the odds. On Sunday, she competed in the Long Jump and it was no

surprise to see her finish a little below her best. She still managed to finish 5th knowing that if she had matched her 4.92m jump from regionals, she could have finished 2nd.

However, credit goes to Breeze for her dedication and resilience, we are proud of you Breeze.

### TOSI Tournament:

It was 9 years ago that Tapawera had last hosted a successful TOSI tournament in which a strong team had finished in 1st place. It was our turn again and a lot of preparation went into this event starting in 2025. This included deciding on the activities for a schedule, billeting, location preparation, transport, food, game rules, officiating, advertising and sponsorship not to mention coaching and preparing a 20-person team to take part. At the end of the week the Tournament was seen as a success from other schools, the local community and special guests. During the week 140 students needed to be catered for in food, beds and sporting and cultural competition. The slogan for the tournament had not changed from 2017 as we all competed, slept, ate and did it all again. EAT, COMPETE, SLEEP, REPEAT. From the start it was obvious that all of the schools had arrived to compete and proved to be one of the closest competitions ever across all seven schools. In the sporting arena, Collingwood were proving to be the most consistent but other schools had their say as we passed through a schedule of Football and Touch before moving on to Saxton for Volleyball and Basketball. Quietly, Tapawera were putting together their own combination of success in the Top Chef challenge, Paddleboarding, Target Shooting and during the Wednesday schedule, Paintballing, Badminton, Indoor Bowls and the Art challenge. This continued on the Final day with Wearable Arts, Pickleball, The Skit and Golf. The competition had taken place in the heat of the day on Monday and lasted until Thursday when the heavens opened. The Netball and Ultimate Frisbee took place in the rain and continued with Ki o rahi in the afternoon but thankfully the schedule was able to go ahead. The behind the scenes approach came as a surprise to everyone on the final awards day when it was uncovered that Tapawera had the most wins during the four days with nine and this resulted in an overall win for the first time since 2019.

### Notable results:

Monday:

Touch boys: 1st

Quiz and Top chef: 3rd (Keetah Jones and Joseph Butcher)

Tuesday:

Volleyball girls: 1st

Paddleboarding: 2nd (Hunter Page, Tamati Bright, Mela Jelinek and Alyse Clarke)

Target shooting: 1st (Hunter Page, Izak Walker, Mela Jelinek and Alyse Clarke)

# Tapawera Community Craft and Market Day

Last Sunday of the month



Across the road from 4 Square  
on the village green, 10am to 2pm.

Bring along your crafts/produce  
/unwanted items to sell.



Enquiries to Amanda Beer on FB messenger or via the Tapawera and Surrounding Valleys FB page.

## WADSWORTH MOTORS LTD.

- Coach Charters & Tours
- Mini Bus Hire.
- School Transport
- Professional friendly drivers
- Members of the Bus & Coach Association

Over 100  
Years of  
Service

wadsworthmotors@extra.co.nz  
100 Main Rd, Tapawera  
www.wadsworthmotors.co.nz

**027 4873167**





### Notable results cont.:

Wednesday:

Paintball: 1st

Badminton: 2nd (Levi Davis, Paige Derbyshire, Roman Streeter-Mantell and Alyse Clarke)

Indoor Bowls: 1st (Oliver Snackers, Izak Walker, Keetah Jones and Mela Jelinek)

Art Challenge: 1st (Maddy Pronk, Jada Jelinek)

Thursday:

Netball girls: 2nd

Ki o Rahi: 3rd

Golf: 1st (Oliver Snackers and Mela Jelinek)

Wearable Arts: 1st (Maddyson Pronk, Jada Jelinek and Mela Jelinek)

The Skit: 2nd equal

We wish Jada Jelinek (Netball, Volleyball and Ki o Rahi), Shakaia Kennett-MacDonald (Volleyball, Basketball and Netball), Kiana Collins (Ki o Rahi and Volleyball) and Paige Derbyshire (Volleyball), all the best for the National Trials in Murchison next term, all the very best. Hunter Page and Kiana Collins are already registered for the tournament in the North of the North in Rugby.

**Huge congratulations to Emily-Rose Coleman** for her outstanding performance at the Tasman School Track Racing!

Emily-Rose achieved incredible results:

1st place in Under 13 C4 Class Para

1st place in Para Team Pursuit

1st place in Composite Team Race

What an amazing accomplishment—your hard work, determination, and dedication have truly paid off. We are all so proud of you, Emily-Rose!



### Vintage Rally Cars

What a treat having almost 500 Vintage Cars at school. Our tamariki were super lucky to experience sitting in some of these very old and loved cars.



### Pedal Power and Past Lives: Room 5 Uncovers Local History

On Thursday, 12 March, the students of Room 5 swapped their desks for bike seats, embarking on a unique historical journey to the Tapawera Cemetery. As part of their ongoing local studies curriculum, the class traded textbooks for headstones to uncover the stories of those who helped build our community.

#### History in the Making

The day kicked off with an energetic scavenger hunt. Students navigated the grounds to track down specific dates, names, and inscriptions, turning the cemetery into a living library. The atmosphere was one of quiet curiosity; teachers noted that every student remained deeply engaged and showed immense respect for the site, treating the excursion as a true "local learning" experience.

#### From Headstones to Research

The learning didn't end at the cemetery gates. Upon returning to the classroom, the students "buddied up" to take their discoveries a step further. Each pair selected a photo of a gravestone and became digital detectives. Using resources like WikiTree, they delved into the ancestral records of our region, piecing together the lives, families, and legacies of the individuals they had found.



All Accounts Matter LTD

## For all your accounting and tax needs!

If you are looking for a new Accountant, now is the perfect time! I would love to find out about your business and have a no obligation chat about how I can help you. So don't wait, call me now!

Sonia Emerson Chartered Accountant

GST | Tax Returns | Payroll | Bookkeeping | Cashflow Forecasting  
Management Reporting | Rental Statements | Farm Accounts



ACCOUNTING SOFTWARE



2020/2021  
Certified  
Consultant



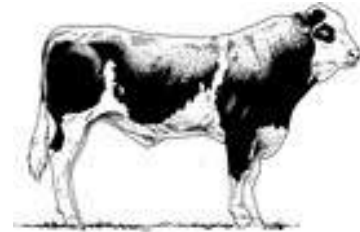
M: 021 221 1009 | P: 03 541 9005 | sonia@allaccounts.co.nz  
367 Wakefield-Kohatu Highway, RD1, Wakefield 7095

[www.allaccounts.co.nz](http://www.allaccounts.co.nz)

Gillespie—1

MAF approved

Home kill butchery



03 547 7746

Butcher / journeyman  
Specializing in quality small goods  
Factory: 111 Bolt Rd, Nelson

## TAPAWERA ELECTRICAL

### Tony Stephens

Registered Electrician

Ph/fax 5224257  
0276249489  
Renaes 0275616510

All electrical needs  
Domestic & Rural

Wiring, faults, some home appliance repairs  
New heat pump installations



Free Quotes  
Competitively priced



TOWN & COUNTRY

# VET

"...for all creatures great & small..."

Your locally owned vet clinic,  
serving the Nelson Tasman region for 30 years

**Phone: 544 1200**

25 Edward Street, Wakefield

3 Brock Way, Richmond

[info@tcvet.co.nz](mailto:info@tcvet.co.nz)



### From Headstones to Research cont.

"It wasn't just about dates; it was about finding the people behind the names," noted Mr Wilson."

**Commemorating the Community** To wrap up the project, students designed detailed posters showcasing their chosen historical figures. These visual tributes now serve as a bridge between Tapawera's past and its future, proving that history is never far from home.



### TOSI Art Challenge

The results of the TOSI Art challenge were of a very high standard and a tough job to judge. Judged by local artist Kirsty Hogg, who was very impressed by the level of accomplishment from all of the participants. The judging was based on two aspects 50% of the mark was based on meeting the criteria of the brief such as symbolism, colours, shapes and patterns. The other 50% was of the skill of the artists, how they showed modelled form, blended colours and finished their pieces. All the panels have been sealed with a protective topcoat and are now displayed around the school. Come and see the beautiful new art around the school. We are very grateful to the TOSI schools for doing such a great job.



Students set up the crosses and the poppies in front of the swimming pool before the holidays and ANZAC Day.



The **Halberg Games** is New Zealand's premier three-day national sports festival, dedicated to young athletes aged 8 to 21 with physical disabilities or visual impairments. More than just a competition, it's a vibrant community event where athletes can trial new sports, push their limits, and celebrate their abilities in a fully supportive environment. This past April school holidays, **Tapawera Area School** was proudly represented by two determined students as part of the Tasman team: **Isobella Bolton** (8) and **Emily-Rose** (10). Both girls fully immersed themselves in the festival spirit, tackling new challenges with grit and smiles: **Isobella** celebrated her first-ever Halberg Games with style. She relished the opportunity to make new friends from as far away as Wellington and was incredibly proud of the effort she put into every activity. The highlight of the weekend was a massive achievement for the whole family, as Isobella brought home the **Tasman Captains Cup**—a moment of immense pride for her mum, Tegan Cornell. **Emily-Rose** had an equally "blast" of a time, meeting plenty of new people and even rubbing shoulders with Kiwi sporting legends **Dame Sophie Pascoe** and **Eliza McCartney**. She discovered a hidden talent in the club throw, recording a massive **10.84m** on her very first attempt! The Halberg Games is a masterclass in inclusion and joy. If you ever have the opportunity to involve your children, jump at the chance. Whether you are a participant or a supporter, the atmosphere is electric, the organization is top-notch, and the memories made are life-changing.

### Library Opening times

Monday to Friday 10:30 - 1:30. Closed Holidays and weekends except by prior arrangement.

We are behind the Tennis Courts and all are welcome.

We are not just a school library but also a free community library with many Fiction and Non-fiction for adults.

To get in contact call 03 522 4337 ext 213 or email [library@tapawera.school.nz](mailto:library@tapawera.school.nz)

**Book Discussion Group**

Meet: 4th Thursday in month, 10am  
 Contact: Adrienne Baigent 021408892

**Federated Farmers**

Contact: Harry Matthews - Field Rep -  
 0275078901

**Golden Bush Garden Club**

Meet: 2nd Thursday of month  
 Contact: President, Linda Milsom  
 02102510945, or Shirley Percy 5224924

**Golf**

Meet: every Sunday, Ladies 9 hole  
 every Tuesday  
 Contact: Gary Oldham ph. 0278080578

**Historical Society**

Contact: Barbara Carleton ph. 5224317

**Informer**

PO Box 15 Tapawera  
 Email [tapawerainformergmail.com](mailto:tapawerainformergmail.com)

**Justice of The Peace**

Peter Phillips ph. 5224313  
 John Ellis ph. 021 522429  
 Brent Hodgkinson ph. 5224381  
 Susan Fenemor ph. 0275224009 (text  
 during school hours)

**MENZSHED**

Contact: John Wilmshurst ph. 5224616

**Netball**

Contact: Susan Fenemor ph.  
 0275224009 (text during school hours)

**Ramblers**

Meet: each month  
 Contact: Shirley Percy ph. 5224924

**Shedwood Hall bookings**

Contact: Tania Higgins ph. 5224587

**St Andrews Church Stanley Brook**

Services every Sunday. Cup of tea  
 afterwards.  
 Contact: Lee Winter ph. 5224160

**St John – Tapawera**

**For emergencies Dial 111,**  
 Email [info@stjohn.org.nz](mailto:info@stjohn.org.nz)

**Tapawera & Dist. Community Church**

**St. Peter's Tapawera:** no services at  
 present  
 Contact: Church office 03 541 8883  
[wakefieldanglican.xtra.co.nz](mailto:wakefieldanglican.xtra.co.nz)  
 Urgent enquiries to Andrea 0024169386

**Tapawera Food Bank**

Contact: Suzzi Lankshear ph.  
 0277491063

**Tapawera & Dist. Community Council**

Meetings: 3rd Tuesday of month,  
 7pm Tapawera Community Centre,  
 email: [TapaweraTDCC@gmail.com](mailto:TapaweraTDCC@gmail.com)

**Tapawera Community Centre**

Email: [tapaweratdccc@gmail.com](mailto:tapaweratdccc@gmail.com)

**Tapawera Connect**

Contact: Rachel Moffit ph. 027 460  
 8728, email: [rachel@tapaweraconnect.org](mailto:rachel@tapaweraconnect.org)

**Tapawera Creative Fibre**

Meet: every Wednesdays, 10am-2pm,  
 Memorial Hall  
 Contact: Catherine Hesketh ph. 027 522  
 4266

**Tapawera Jujutsu Club**

Contact: Tony Hammersley ph. 5224609

**Tapawera Op Shop**

Currently closed

**Tapawera Playcentre**

Meet: Mon & Thur, 10am -12:30pm  
 Memorial Hall ph. 5224456

**Tapawera Rugby Football Club**

Bookings: ph. Judy Benjamin 5224445

**Tapawera Sport & Recreation Society**

Contact: Judy Benjamin ph. 5224445

**Tapawera Volunteer Fire Brigade**

Contact: Dean Millar Chief ph.  
 0279651399; Ted Oakly Deputy Chief  
 ph. 0210704033

**TAS / Community Library**

Mon-Fri 10:30am-1:30pm. Contact: Kelly  
 Library ph. 5224337/ext. 213

**TESSI**

Contact: Bruce Whyte ph. 5224550

**Visual Arts Society Tapawera**

Contact: Dallas Robinson ph. 5224984

**Yoga with Josie**

Wednesdays 6-7pm school music room  
 (school term only).  
 Contact: Josie Orr: 027 612 5813

**Wakefield Police**

Senior Constable Jamie White –  
[jamie.white2@police.govt.nz](mailto:jamie.white2@police.govt.nz)  
 Senior Constable Matthew Berquist –  
[matthew.berquist@police.govt.nz](mailto:matthew.berquist@police.govt.nz)  
 Sergeant Craig Clayworth –  
[craig.clayworth@police.govt.nz](mailto:craig.clayworth@police.govt.nz)  
 Non-emergency line – 105 (can ask to  
 be put through to on-duty officer)  
 Emergency – 111

**What's on  
May**

- 5 Dehydrating Food Workshop,  
St Peter's Church 10am-12pm
- 12 Tapawera Talking Café, 10-  
11:30am, St Peter's Church
- 12 Digi Drop-in Session, School/  
Community Library, 11am-1pm
- 14 Garden Club, 11am
- 20 Articles for Informer close 5pm
- 21 TDCC monthly meeting, Rugby  
Club rooms, 7pm
- 26 Tea and Talk, St Peter's  
Church, 10:00am - 11:30am
- 26 Bible study, St James Church,  
797 Tadmor Valley Road, 6pm
- 28 Flood risk in the Motueka  
Catchment workshop,  
Shedwood Hall, 11am-2:30pm
- 31 Craft and Market Day, Village  
Green, 10am-2pm

**GP & Nurse at  
Tapawera Clinic**

(during school term time):

**GP clinics – Mondays**  
 9am – 12 midday

**Nurse clinic – alternate**  
 Tuesday mornings - phone  
 541 8911 for dates