



Visual Art Society Tapawera 2026 Art Exhibition was very successful for all exhibitors. We were pleased to have student art portfolios displayed again this year.

Many thanks to our Sponsors:

Impressions Richmond, Tapawera Four Square, Flat Rock Kohatu, Gazza's Sign Art, Nick and Jackie NZ Post, Shedwood Hall Committee, Stuart Bryant, Sharon and Richard Rogers.

Thanks also to members who helped set up the hall, a real group effort and Mike Miller for doing the wine run.

All raffles have been drawn and delivered.

Impressions Art Voucher for Artist with the most votes was won by Kirstie, Kohatu Craft Voucher for Crafter with the most votes was won by Dallas.

Rosie's hydrangeas drew some wow comments at our front desk, thank you Rosie for your lovely floral arrangement.

Jan Thomson was our Guest Artist this year, her work was well received and enjoyed by all.

Many thanks to locals and visitors for coming to see our exhibition.

Dallas for Vast

## TDCC February monthly meeting: new date.

You are warmly welcomed to the deferred February monthly meeting, Tuesday 3rd March, 7pm, at the Rugby club rooms.

The incoming committee will send an agenda to members beforehand, where possible .

See you there!

Trish Palmer  
(On behalf of TDCC Committee)



## Understanding the River and Our Path Forward – Hearing from the Upper Catchment

Many people in the upper Motueka are still living with the impacts of last year's June and July floods — repairing

damage, watching the river more closely than before, and wondering what the future holds.

The Motueka Catchment Collective (MCC) is beginning to organise the next community Rivers Workshop for late April which aims to bring the community together to understand future flood risks, share perspectives, and discuss options for living safely along our rivers.

This isn't a council meeting. It's an MCC-led community workshop. Our role is to bring residents, farmers, iwi, technical experts and others together for the conversations that don't always fit into formal processes. We focus on shared understanding, practical knowledge and action, and strong relationships across the catchment.

As we figure out how to structure the April workshop, we're especially keen to hear from Tapawera and upper-catchment residents, farmers, growers, and landowners. Your experiences — both during the floods and over many years of living with the river — are essential to getting the picture right.

We're currently interested in hearing:

- what questions people most want answered
- what information would help people feel more informed and prepared
- what local knowledge needs to be in the room
- and who should be part of the conversation

If you want to share your thoughts, would like to be involved, or simply want to stay informed as plans develop, we'd really like to hear from you. Contact [dana@motuekacatchment.org.nz](mailto:dana@motuekacatchment.org.nz) or 021526053 or fill in your details at the QR code.

More event details will follow soon.



# Tapawera Community Craft and Market Day

Last Sunday of the month



Across the road from 4 Square  
on the village green, 10am to 2pm.

Bring along your crafts/produce  
/unwanted items to sell.



Enquiries to Amanda Beer on FB messenger or via the Tapawera and Surrounding Valleys FB page.

## RURAL POST, RD 2 Wakefield

Contact Nick & Jackie Costley for all your RD 2  
Wakefield postal needs.

Including prepaid envelopes, stamps, courier  
items and local freight from Wakefield, Dovedale  
and Tapawera. Prescriptions from Wakefield.

**Phone 0275418581**

Mark & Tania Gill  
T/A MTJ Transport  
RD2, Nelson  
NZ Post Rural Contractors  
Servicing  
Motupiko-Korere-Kikiwa-Tophouse-St Arnaud-Glenhope

For all your Postage, Milk & Courier Freight  
Operating 3 Days Weekly  
(Monday-Wednesday-Friday)  
Departing Nelson 8.00am  
Phone 546 6295

## Material & adverts for Informer

All material is to be sent to either:

Informer, PO Box 15, Tapawera, 7055  
or email- [tapawerainformergmail.com](mailto:tapawerainformergmail.com)

To be received by 5pm  
20th of the Month

If emailing a word document please send in Word as an  
attachment.

If sending an advert please save as a jpeg before sending.

Please check your emails to see your article/advert has  
been received as sometimes there needs to be alterations.

## Advertising rates for Informer

Standard ad	Pay monthly	Pay annually
1/4 page advert	\$39	\$343
1/2 page advert	\$54	\$475
Full page advert	\$78	\$686

Adverts that require editing may cost extra

The Informer is produced and published by the Tapawera and Districts  
Community Council, PO Box 15, Tapawera, 7055;  
email: [tapawerainformergmail.com](mailto:tapawerainformergmail.com)  
Circulation 635  
Editor: Gill Hammersley  
The Editor and Publisher try to ensure information published is truthful

and accurate, but do not accept any responsibility for errors or  
omissions, or for any consequences of readers' relying on the  
information published. Opinions expressed by contributors may or may  
not be endorsed by the Editor or Publisher.  
All material submitted, whether editorial or advertising, is accepted at  
the discretion of the Editor and the Publisher.



## Tapawera Community Connection Update – March 2026

Do you want to connect to others in our community? Read on for information on what’s been happening in our town and more fun ways to get involved.

### Celebrating International Women’s Day, Sunday 8 March, 5pm to 7.30pm

#### Mark your calendars for this Special Local Event



This community event at Shedwood Hall is centred on connection, wellbeing, and resilience.

After a challenging year for many in our area, the evening is about creating a welcoming, inclusive space where women can come together, hear inspiring stories, and connect with local supports and one another.

We will have three women sharing their personal stories along with local, women operated businesses and community groups – showcasing opportunities for women in our area to connect with others. Light food and refreshments will be available, so it would be great if you can let me know if you plan to attend, for catering purposes.

Men, we have not forgotten you!! Keep watching for a special men’s event planned for later in the year.

### Workshops

#### 2026 Workshops

We have a great line up of workshops being offered monthly this year until December. If you would like to run a community workshop please get in touch with me, as we still have spaces to fill.

#### Preserving Workshop - 1<sup>st</sup> April 2026, 6pm to 9pm

Heather Spence is offering a preserving workshop in the school kitchen on the 1<sup>st</sup> of April. The workshop will be focused on preserving tomatoes and feijoas. Attendees will get to make Tomato Chutney and Feijoa Jam to take home.



Please let me know if this is something you are interested in as numbers are limited. Spots will be offered to locals first.

#### Dehydrating Workshop – April 2026

We have had a few enquiries about running a workshop on how best to dehydrate food. Dehydrating is a great way to help become food resilient, ensuring a longer shelf life of food, while maintaining flavour and nutrition.

There are many ways of dehydrating food such as: using a dehydrator, oven drying, sun drying or air drying. Many fruits, vegetables, meats and herbs can be suitable for dehydrating.

This is something we would like to offer in late April, taking advantage of the apple season.

**If you are interested in facilitating this workshop or part of it**, please get in touch with me as soon as possible so that we can book it in.

#### Hub Fundraising Link



Our dedicated Tapawera Hub fundraising page on the community website and donation portal is now live! You can donate to this wonderful community asset directly from the website, automatically receiving a donation receipt to claim your tax rebate from IRD. Scan this

QR Code to go to the website and click the donate now link.

#### Support

If you or anyone you know needs any assistance or support, talk to us and we can point you in the right direction.



Confidentiality is assured. Our Community Centre office is currently closed, but for support advice please call me or try our mobile office number: **027 436 1937**

**Della Webby**, CLDP Community Connector.

[Connect@Tapconnect.onmicrosoft.com](mailto:Connect@Tapconnect.onmicrosoft.com) Phone: 027 479 4420

## Preserving Workshop



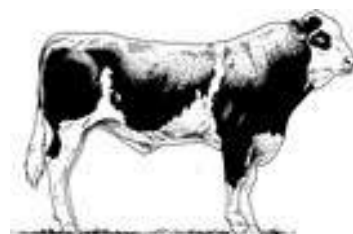
**In this workshop you will be making tomato chutney and feijoa jam to take home.**

\$10 pp donation towards costs  
Tapawera School Kitchen  
6pm - 9pm, Wednesday 1<sup>st</sup> April  
For more information or to register, please contact Della  
027 479 4420 or [connect@tapconnect.onmicrosoft.com](mailto:connect@tapconnect.onmicrosoft.com)

Gillespie—1

MAF approved

Home kill butchery



03 547 7746

Butcher / journeyman

Specializing in quality small goods

Factory: 111 Bolt Rd, Nelson



## TAPAWERA PLUMBING AND GAS

*Your Local Plumbing & Gas Experts*

Need a reliable plumber or gas fitter?

Look no further than **Tapawera Plumbing and Gas!**

Based in Tapawera and servicing the surrounding areas – including Murchison.

We offer trusted, professional service with a friendly, local touch.

- General plumbing repairs & maintenance
  - Gas fitting & hot water solutions
  - New builds & renovations
- Prompt, tidy & dependable service

**Contact Diego Fieldsend**

**Phone:** 0223623195

**Email:** [admin@tapaweraplumbingandgas.co.nz](mailto:admin@tapaweraplumbingandgas.co.nz)

## HANDYMAN

- \* General property maintenance
- \* Clean out/tidy up
- \* Water blasting
- \* Gardening
- \* Chain sawing
- \* Repairs
- \* Demolition
- \* Any farm work

Fair hourly rate. Honest and hard working.

Local references available.

Please enquire to Jeremy Ellis:  
(03) 522 4460 or 0276697744



## March 2026 - Janine Leeden

The club is growing with new members at each meeting, which is a healthy sign that we're 'up the right garden path'. Where else can you get such value for \$10 membership, with great destinations, good people, bargain plant purchases and great value raffles and even some discounted outings thrown in while learning about how and where to grow particular plants from some really experienced gardeners.

Our February meeting was held at Crafted Earth Nursery, Motueka Valley Highway. It was a lovely day. Raffles were won by Linda and Trish.

The club voted to make a good donation to the Tapawera Volunteer Fire Brigade towards the purchase of their new vehicle.

NEXT MEETING: On the 12th of March at Cath Smart's property in Pigeon Valley. There will be a talk and tour of her Dahlia Garden.

Please register your interest via this link: <https://www.sporty.co.nz/tapaweranetball/Registrations-1/tab1> before **February 28th**

Another exciting thing that is happening this year is the South Island Secondary Schools Tournament (SSIS), this year it is being held in Nelson at the end of August. It is open to all Year 11 and above/senior secondary students.

We are calling a meeting for all parents and players interested in participating in this tournament after the player registration day on Tuesday 4th March 4:00pm, Location is to be confirmed. ALL PARENTS MUST ATTEND this is so we can make a decision to attend or not as a school team.

We look forward to seeing you all there!

**QUIZ NIGHT!** Last year was a great success so we are holding the quiz again. Please get your teams in ASAP by emailing [tapaweranetballclub1988@gmail.com](mailto:tapaweranetballclub1988@gmail.com)

We have a Tapawera Netball Club Facebook page where we will update you on how our teams do throughout the season. We also have a new email address, so feel free to reach out to us at [tapaweranetballclub1988@gmail.com](mailto:tapaweranetballclub1988@gmail.com)

Lissie Anglesey  
Club Secretary



## Tapawera Netball Club February News

We had the senior trials a couple of weeks ago. It was great to see some new and returning faces.

We are still seeking expressions of interest, please flick us an email at [tapaweranetballclub1988@gmail.com](mailto:tapaweranetballclub1988@gmail.com) or register via this link: <https://www.sporty.co.nz/tapaweranetball/Registrations-1/tab1>

Our AGM was held on Tuesday 17th February. Thank you to everyone who attended. We continue to have Susan Fenemor as President, Tania Higgins as Treasurer and Lissie Anglesey as Secretary. A big thank you to all of our coaches who are also on the committee Belinda Grice, Toni Derbyshire, Laura Fry and Shaye Leah.

### Upcoming Important Dates:

We have our Player Registration Day on Tuesday 4th March at 3:15pm for ages 5-18 years to register for the upcoming season. This will be held at the Tapawera Area School Netball Court.

Whether you're new to netball or returning for another great season, we would love to see you there. Come along, meet the coaches and committee, and get ready for an exciting year of netball.

**TAPAWERA NETBALL CLUB PRESENTS**

**Quiz Night**

Do you have what it takes to be the ultimate quiz champion?  
Then, gather your friends and join us for Quiz Night at the  
Tapawera Rugby Club Rooms

**SATURDAY, 28TH MARCH**

START AT 7PM | TAPAWERA RUGBY CLUB ROOMS

**\$50 PER TEAM**  
5 People Maximum Per Team

Register your team by emailing  
[tapaweranetballclub1988@gmail.com](mailto:tapaweranetballclub1988@gmail.com)

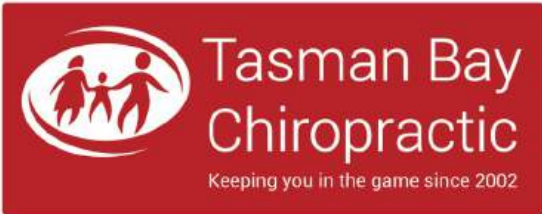
# WADSWORTH MOTORS LTD.

- Coach Charters & Tours
- Mini Bus Hire.
- School Transport
- Professional friendly drivers
- Members of the Bus & Coach Association

Over 100  
Years of  
Service

wadsworthmotors@xtra.co.nz  
100 Main Rd, Tapawera  
www.wadsworthmotors.co.nz

**027 4873167**



Referrals, families and  
all new clients welcome

Visit our website or call for more information



03 544 4554 Monday-Saturday  
tasmanbaychiropractic.co.nz

Find us on  



DREW LOGAN  
*Photography*

WEDDING  
COMMERCIAL  
NEWBORN  
FAMILY

WWW.DREWLOGANPHOTOGRAPHY.CO.NZ  
0273173102  
@DREWLOGANPHOTOGRAPHY  
DREWLOGANPHOTOGRAPHY@HOTMAIL.COM





**Senior's Snippets March 2026** with Janine Leeden, 0277525975

For simplicity, ease of access and remembering, at this point all three general activities that I facilitate will be held out of St Peter's Anglican Church, for which I thank the Wakefield diocese for their continued support. Also, I hope that all will note that the times for **all these activities run from 10am-11.30am**, maybe running over a little.

Sit and Be Fit continues **every Friday** morning with fun and fitness of the mind and body paramount. It's so good to hear everyone having a good laugh!

**Wellby Talking Café** is now at St Peter's Church on the 2<sup>nd</sup> Tuesday of every month. **For March the date will be Tuesday 10<sup>th</sup>.....10am-11.30am**. Again, this activity is open to anyone in the community wanting connection with others over a relaxed cup of tea. We encourage friendly positive discussions and encourage everyone to feel heard and valued.

Nelson Bays Primary Health and Nicole are organising to run a workshop every two months, **open to all the community**, with topics that should resonate with most of us. At this point these workshops will be run in conjunction with our Tea and Talk for ease of venue and a time that fits with Nicole's workload. She will give advanced notice of the topic so that I can promote it here. Keep your eyes peeled...or is that pealed?!

I would like to open our **31<sup>st</sup> March Tea and Talk** session at St Peter's Church to anyone interested in learning about **Healthy Ageing and Longevity**. Nicole, Health Improvement Practitioner from Wakefield Health Centre, will be presenting this workshop. This session will cover simple ways to support healthy ageing and wellbeing at any age e.g. everyday habits around movement, food, sleep, stress and staying connected. The focus will be on making small, sustainable changes that can help you stay active, independent and feeling well over time. We meet at 10-11.30am and there is a \$3 cost.

Personally, I'd like to say what a delight it was to be part of and attend a Sunday morning church service at St Peter's Church during the Music in the Mountains weekend. It's been too long! To see the place full of both locals, young and old, and some visitors, with voices raised in worship was wonderful! The message was brought by Trevor Davis, visiting from Richmond. He spoke from the book of Ezekiel, about dry bones coming to life – 'restoration', which was so appropriate. Everyone stayed and enjoyed a lovely morning tea outside under the trees revelling in the fine summer weather.

*To laugh often and much; to win the respect of intelligent people and the affection of children; to earn the appreciation of honest critics and endure the betrayal of false friends; to appreciate beauty, to find the best in others; to leave the world a little better; whether by a healthy child, a garden patch or a redeemed social condition; to know even one life has breathed easier because you have lived. This is the meaning of success. – Ralph W. Emerson*

## Creative Fibre Tapawera



Welcome to 2026. Our group is up and running, planning the program for the coming year.

We started 2026 with our usual Open Day where Creative Fibre members from groups across the Top of the South joined us for a fun day of crafting, catching up and meeting new friends.

Many thanks to everyone who helped make the day run smoothly.

The contact for information about our Group is Catherine 027 522 4266.

Group members have created patchwork quilt blocks for donation to Cancer House in Christchurch, two of which were displayed at the recent art exhibition.



No matter if you spin, sew, knit, crochet, or cross stitch, you are very welcome to join us at the Memorial Hall 10am – 3pm each Wednesday, or at 10 Totara Street 7pm – 9pm on a Tuesday evening.

Dallas Robinson

# FREE

## Healthy Ageing & Longevity Basics

*Healthy ageing at any age!*


- Want to keep doing what you love longer?
- Would more energy make everyday life easier?
- How are you looking after yourself now and in the future?
- What would ageing well look like for you?



### What will be covered:

This session will cover simple ways to support healthy ageing and wellbeing at any age e.g. every day habits around movement, food, sleep, stress and staying connected. The focus will be on making small, sustainable changes that can help you stay active, independent and feeling well over time.

### Tuesday 31<sup>st</sup> March

 10.30am, approx. 1 hour

 St Peter's Anglican Church, Main Road, Tapawera



Available to anyone and any age.

Contact Wakefield Health Centre 03 541 8911 or Nicole (Health Improvement Practitioner) 027 319 6229 to register.



**WAKEFIELD & DISTRICTS**  
COMMUNITY HEALTH CENTRE

## A Granny's Practical Thinking for the Future

I couldn't resist forwarding the following quote to our community newsletter. It's from an online site, The Whole Story, a NZ team of agricultural advisors focussed on inspiring, facilitating and articulating holistic sustainability in agriculture. <https://wwwthewholestory.co.nz>

***"We've got 5 mokopuna now, and they're all very smart cookies, and I really want to have an answer for them when as teenagers they come, asking all those hard questions saying, you know, granny, you knew, you knew. Why didn't you do anything? So, behind of a lot of our thinking, you know, we want some more intergenerational thinking so that they've got a good future ahead of them."***

This reflects many of my thoughts when I'm around kids, wondering how they're going to manage in the future when the environment is as bad/poor/difficult as I'm sure it will be. Right now, if I had grandchildren, I'm sure I'd do my best to help them grow up thinking about and adopting sound environmental values and practices. 'Being a good ancestor', from a future environment perspective.

Amanda, who wrote the above in a 'The Whole Story' profile (link above), is one of the grannies of two of my Central Otago great-nephews and nieces. I was delighted to read her advocacy for intergenerational thinking that will help them and others of today's kids manage their environmental future. Delighted also, knowing that her published thoughts have likely got other grannies, granddads, parents, thinking 'what's my intergenerational responsibility regarding climate issues?', with their own young generations in mind.

It would be great if our local region's grandparents and parents shared their strategies for helping our young people manage their environmental future, via letters to the Tapawera Informer. Go on, do it now!

Heather Spence



**WAKEFIELD & DISTRICTS**  
COMMUNITY HEALTH CENTRE

### **Some Happy Hellos - Gavin Drummond**

We are delighted to announce that **Dr Asanga Nanayakkara** has agreed to join our team as a GP. Asanga was our most recent Registrar (trainee GP) and some of you will have already met him. We are so pleased he has decided to share his skills within our community.

**Dr Adeline Velu** has joined us, replacing Dr Anna Koop, and has already started seeing her new patients. Like Anna before, she has joined us from The Netherlands, so is both getting used to us here as well as NZ more generally. We are lucky to have such an experienced and skilled GP working in our community. She has arrived with her husband and 3 children, and they are enjoying all our beautiful region has to offer.

**Dr Jennifer Feng** has joined us for the next six months as our latest Registrar, she will be a great asset here before she moves on to her next six months in Tasman Medical Centre.

### **.... and a Sad Goodbye – Gavin Drummond**

**Dr Pip De Hamel** will be retiring, and we will be very sad to see her go, although happy and excited for her to enjoy her well earned retirement. She has been an extraordinary colleague; we will miss her. I know she has had so many positive impacts on patients past and current, and our wider community. We will be in touch with her current patients shortly to let them know who will take over their care. She has written a few words below:

### **Retirement – Dr Pip De Hamel**

Many of you have probably heard that I am retiring and it is all true. I turned 65 last year and am now looking forward to a lovely break.

Nearly 36 years ago we were moving into our house in Wakefield to the sound of bagpipes marching down Edward Street to celebrate the opening of our Health Centre. I have worked here on and off since then and have been a regular doctor for the last 20 years.

Being a GP is a hugely privileged job, and I have loved working with folk on their health. I have had the loveliest patients, and I thank you for your friendships.



All Accounts Matter LTD

## For all your accounting and tax needs!

If you are looking for a new Accountant, now is the perfect time! I would love to find out about your business and have a no obligation chat about how I can help you. So don't wait, call me now!

Sonia Emerson Chartered Accountant

GST | Tax Returns | Payroll | Bookkeeping | Cashflow Forecasting  
Management Reporting | Rental Statements | Farm Accounts



ACCOUNTING SOFTWARE

myob

2020/2021  
Certified  
Consultant



M: 021 221 1009 | P: 03 541 9005 | sonia@allaccounts.co.nz  
367 Wakefield-Kohatu Highway, RD1, Wakefield 7095

[www.allaccounts.co.nz](http://www.allaccounts.co.nz)

## TAPAWERA ELECTRICAL

### Tony Stephens

Registered Electrician

Ph/fax 5224257

0276249489

Renae 0275616510

All electrical needs

Domestic & Rural


Wiring, faults, some home appliance repairs

New heat pump installations



Free Quotes  
Competitively priced

## The Lady Tradie

Has your husband got a round 

Spring has sprung

and the grass has riz !

Do you wonder where a handyman is ?

Can't get one ?

Then call " Jen the Lady Tradie "

for all your outside spring clean-up jobs

\* Gutters full of leaves;

\* Lawns that are starting to bolt;

\* Waterblasting those slippery paths

and all that spring growth that just might get away on you.

\* **Local Person** \* **Referees Available** \*

Consideration & discount shown towards Senior Citizens

**FREE QUOTES**

**Contact Jennifer**

Phone or text: **027 544 2663**

After hours/leave a message: **03 522 4453**

Email enquiries to: [jentheladytradie@gmail.com](mailto:jentheladytradie@gmail.com)

### COME TO A

## TALKING CAFÉ

Connect with your community



Talking Cafés are an opportunity to meet people, make new friends and find out more about activities, services and support in your community.

Pop in for a quick cuppa, or stay for a longer chat.

All are welcome, no bookings required.

Your local Tapawera Wellby café  
Every 2nd Tuesday of the month,  
St. Peter's Anglican Church, 10-11.30am  
(NOTE VENUE CHANGE)

Next Cafes: Tuesday, 10 March  
Tuesday, 14 April



For more details:  
[wellby.org.nz](http://wellby.org.nz)  
or phone (03) 546 7681



## Tapawera Area School

Kia ora, Moghrey Mie,

It has been an absolutely awesome start to the year here at our kura, Tapawera Area School. The positive approach to everything placed in front of our students has just been amazing to witness.

There has been a lot going on in these 3 weeks (4 weeks for staff), with lots of professional learning, first aid qualifications and a focus on school academic results and targeted approaches and support for all of our student's moving forwards.

Probably the most impressive thing from my perspective coming in to lead a new school has been the collective drive from staff and students to support each other and therefore having students reach their full potential.

Our job as a school, a Senior Leadership Team, staff and Board of Trustees (BoT) is to provide the very best and safest environment to enhance engagement and raise achievement and we are seriously focusing on this and getting it right.

Some examples of this across the school are the BoT's decision at our meeting this week to agree to a further provision of technology within the school, to allow each student from Year 4 upwards to have access to their own personal device (Chrome book or Lap top) to be able to access the curriculum at any time and utilize working from home, when appropriate, with "Google classroom"

In this way, if any student is absent, ill, on a trip or completing homework and further study, they can do so at any time within school and with permission at home. It also will allow our staff to share resources and teaching materials directly to the students and they can access it consistently and parents and caregivers can take the opportunity to see what work they are doing and help support them at home as well.

Another example is the introduction of some new curriculum areas into the high school, with BCAT's (Building and Construction Allied Trades—building) having a strong uptake and now allowing Year 11 students to attend Trades Academy in Nelson at NMIT in a wide range of additional studies one day a week (again a great take up of this option).

I am very grateful to the work happening in the garden area/horticulture of our school and the recent community working bee. We have many more plans for this area and the desire to bring this area into the curriculum as well. We will be advertising shortly for anyone who wishes to buy or make a donation to the school for countless fence posts of all different types up to and including 3 metre deer fence posts. Our new BCAT's class will also be making extremely

high quality and very sturdy picnic benches and seats to offer for sale at cost price—watch this space!

You will have received this week by email and seen on Facebook and by hard copy, our new idea and version of parent meetings. This is now called a Three Way Conference (3WC) and is designed to ensure a stable base for learning and feedback and feed forward between staff, parents and the student. This will provide measurable goals agreed by all parties and then be able to be monitored, so as to ensure we are all getting as close as possible to the desired end results. This has proven to be very effective in raising achievement for all students in many, many schools across the country and also builds positive relationships between all three parties.

Sport has restarted with a bang, a huge focus on the Senior TOSI tournament coming up in March, with daily coaching and practices across multiple sports and other disciplines and it has been a pleasure to join in with many other staff volunteers to coach some of these sports. Our younger students have been focusing on swimming at the start of the year and while the weather is "usually" warm and it is great to help and watch this progress also.

We had our first BoT meeting earlier this week and again, it was great to see the new members and established members all with the same desire to give up their time to drive the school forward and make the school successful.

We have welcomed a number of new families to the school and the community and we have more coming, keep spreading the word about our wonderful kura.

Finally, from myself personally, I thank all of you that I have met so far in our community and the encouragement, thanks and support that you continue to offer.

Andy Ashworth  
Principal

### House Leader Announcement

We are thrilled to officially announce our 2026 House Leaders

These students will be working together to experience and demonstrate student leadership. With a good understanding of our school FIRE values, we look forward to a year full of spirited competitions, collaborative projects, and positive change. Whether it's on the sports field, in the classroom, or in the playground.

Baton House; Senior: Tamati Bright, Deputy: Ella Walker  
Junior: Marcus Goh

Tadmor House; Senior: Hunter Page, Senior: Jada Jelinek,  
Junior: Charleigh Meade

Motupiko House; Senior: Kiana Collins, Senior: Joseph  
Butcher, Junior: Charlie Ryan



## Community weeding bee HAYCOCKS BUSH

**Help protect a special piece of lowland native forest.**

Old Man's Beard was taking hold in Haycocks Bush — but with continued community effort, we can get rid of it.

Join locals and OMB volunteers for a hands-on morning restoring this special place.

All tools, equipment and light lunch provided

**Come and be part of the action!**

**SUNDAY 15 MARCH  
9.30am - 1.30pm**

**2094 Motueka River  
West Bank Road**

**REGISTER HERE!**

[surveymonkey.com/r/WV6RSRZ](https://surveymonkey.com/r/WV6RSRZ)

Questions?  
[dana@motuekacatchment.org.nz](mailto:dana@motuekacatchment.org.nz)



## New Staff

A warm welcome to the new members of staff.

**Andy Ashworth** - our principal this term has been enjoying catching up with our tamariki and sharing their learning.



**Vikashni Singh**, originally from Fiji, relocated to New Zealand with her family in 2023, and now lives in Nelson.

Last year, she was teaching at Nelson Boys College. She is excited to join Tapawera Area School as a Mathematics teacher and is passionate about helping learners develop confidence in Mathematics, think critically, and reach their full potential



We are excited to welcome **Becky Knight** as our new Senior Office team member. Becky has lived in Tapawera for the past two years and applied for the role as she was keen to become more involved in the community and connect with more people.

With seven years' experience in administration and finance, Becky brings valuable skills and knowledge to our kura.



## 3 Way Conferences- Save the date - Monday 9th March

Hopefully, you will have seen the communication out about the changes to our parent interviews this term.

Classes will **NOT** be running on Monday 9th of March to allow teachers to meet with you, so the only time on this date that your child comes to school is for their/your interview. It is very important for us to meet with all students and their caregivers to discuss their learning. School buses will **NOT** be operating on this day.

**Years 1-8 students** will have 15 minute appointments with your child's teacher with slots available throughout the day for all primary classes.

These begin at 10.00 am and go through to 6:00 pm with morning tea (12.00-12:30pm) and afternoon tea (3 pm-3.30 pm) breaks for staff. Primary staff will be in their homeroom classrooms.

**Year 9-13** Secondary times also will be in 10 minute slots with each individual teacher.

Secondary teachers will be available in their teaching spaces. It may not be necessary to meet with each of your child's teachers, but it is encouraged.

Please click on the link below to book your times: (if you need help with this please contact the school office)

<https://www.schoolinterviews.co.nz/code/rnudu>

Here are our gorgeous 5-year-old, new students. We are so happy to have you all in Room 3





"...for all creatures great & small..."

Your locally owned vet clinic,  
serving the Nelson Tasman region for 30 years

**Phone: 544 1200**  
25 Edward Street, Wakefield  
3 Brock Way, Richmond  
info@tcvet.co.nz

**Tall Poppy**  
REAL ESTATE

NELSON / TASMAN BAYS

Real Estate

*Fair fees, Free Appraisals*

- Residential Properties
- Lifestyle Blocks
- Land & Sections
- Investment Properties

**AMBER DIACK**

Licensed Salesperson (REAA 2008)

021 0881 1926

amber.diack@tallpoppy.co.nz



Servicing Tapawera, Kohatu,  
Tadmor, Motueka Valley and  
surrounding areas daily

**"If its urgent, we'll be there!"**

Plumbing - Gasfitting - Drainage  
Blocked Drains - Leaky taps  
Spouting - Hot water - Wastewater  
system servicing

Phone, email or Facebook Messenger  
us to book your Job or Free Quote

**Phone - 03 543 8090**

**Email - info@tuffnell.co.nz**

*"We thank all our clients for their  
continued support"*



RELAXATION / DEEP TISSUE

1 hour Massage \$99

1.5 hours Massage \$139

PACKAGES (SAVE 10%)

3 x 1 hour Massage \$267

3 x 1.5 hour Massage \$375

CONTACT SAMMY TO BOOK:

Ph/Text or send us a message  
on Instagram or Facebook

96 Main Road Tapawera



027 5224189

@glowholisticmassage





## Tabloids Sports

What a fantastic afternoon Friday last week, our entire school came together for our annual Tabloid Sports. Luck was on our side! The weather held off, making for a perfect afternoon of outdoor fun/water activities.

It was great to see all the students—from our newest arrivals to our seniors—diving into the challenges with such enthusiasm. Events like these are about more than just points on a scoreboard; they are about building resilience, trying new things, and cheering on your peers even when things get a little competitive.

Awesome to see many parents and whānau come out to support and help out with the event. It was wonderful to have our community involved; it really boosted the spirits of all our tamariki.

There was a best dressed boy and girl house competition. The winners were:

Motupiko: Wren Freeman and Harry Butcher  
Baton: Keetah Jones and Tamati Bright  
Tadmor: Ruby Porthouse and Hunter Page

### Overall house winners:

#### Performance:

1st Motupiko  
2nd Baton  
3rd Tadmor

#### Fair Play:

1st Motupiko  
2nd Baton  
3rd Tadmor

Well done to everyone.



## Library News

Happy New Year. I hope you all had a fantastic Summer break. I for one am pleased to be back at school and back into some sort of routine. We are looking forward to a full year of fun and activities in the library.

**Chess Club** started with a bang on Tuesday. Full of happy children. We are trying to structure it a little differently this year to even out the chaos. We will have everyone playing different people each time and maybe set up a leader board.

I highly recommend that if you have a chess set at home, that you play with your children to give them very valuable practice and experience. And if you enjoy it then maybe you would like to come along to chess club also. Tuesday mornings between 11.00 and 12.30 am in the library. We would love to see you.

**Remember the library is open to all community members and is free to join.**

### Library Hours

10.30 to 1.30 Monday to Friday  
Ph 03 522 4337 ext 213

**RUGBY 2026**  
REGISTER FOR NEW AND RETURNING PLAYERS

<p>Grades Ripa to under 11s</p> <p>Register with</p> <p><b>Tapawera</b></p> <p>Tasman RFU, Crusaders.</p>	<p>Grades Under 12s to Seniors</p> <p>Register with</p> <p><b>Valley Stags Rugby Club</b></p> <p>Tasman RFU, Crusaders</p>
---	--

**REGISTRATION**  
xplore.rugby

**For more information**

tapawerarugby@gmail.com or  
Blair 0278450355  
Alex 0274607348

# TOSI Programme 2026

## Sunday 22nd March - 27th March

Time	Activity	Numbers	Location
3:30 pm	Arrival	Everyone	School Gym
4 pm Approx.	Host Family pick up	Everyone	School Gym
6 pm	Staff Dinner	All staff	At school

## Monday

Time	Activity	Numbers	Location
8:15 am	Morning Briefing	Staff	Meeting Room
8:45 am	Mihi Whakatau	Everyone	Hall
10 am-1 pm	Girls Football Boys Touch Tech Challenge Quiz	8 8 2 2	Back Field Rugby Field Workshop Hall
1 to 1:30 pm	<b>Lunch</b>		
1:30 pm – 4 pm	Boys Football Girls Touch Art Challenge Cooking Challenge	8 8 2 2 = 1B 1G	Back Field Rugby Field Art Room Cooking Room
4 pm to Finish	Cooking challenge judging	Everyone	Gym
	Dinner at School Rugby Trial	Everyone	Quad Area

## Tuesday

Time	Activity	Numbers	Location
8:15 am	Morning Briefing	Staff	Meeting Room
9 am-12	Boys Volleyball Girls Basketball Paddleboarding	8 8 4 = 2B/2G	Saxton Saxton Tahunanui
12 pm	<b>Lunch</b>		
12:00 – 3:00	Girls Volleyball Boys Basketball Target Shooting	8 8 4 = 2B/2G	Saxton Saxton Saxton
3 pm	Home Time	Everyone	
5:30	Staff challenge/dinner	All staff	Rugby club rooms

# Top of the South

AREA SCHOOLS TOURNAMENT (TOSI)

Sunday 22 March – Friday 27 March

"Our Community, Your Involvement:  
Seeking Volunteers & Billets!"

Please contact- 03 5224337  
office@tapawera.school.nz



**TAPAWERA AREA SCHOOL**  
With **FIRE** in our Hearts. We Empower, Learn and Grow.

## TOP OF THE SOUTH AREA SCHOOLS TOURNAMENT

### WEEK 8 – TAPAWERA

- 120 Students
- 7 Schools
- A Huge Week for Our School & Community!

We are excited to welcome schools from around the Top of the South for an action-packed week of sport, connection and community spirit.

This is a fantastic opportunity to showcase our kura and make our visitors feel truly welcome!

### WE NEED YOUR HELP!

**Can You Billet Students?** Can you host students for the week? Billeting is a rewarding way to support visiting teams and help create a memorable experience for them.

**Can You Donate Baking or Food?** Are you able to contribute baking, meat or other food donations to help feed our visitors and volunteers?

**Can You Referee or Help with Sport?** Do you have skills in refereeing or helping run sporting events? We would greatly appreciate extra hands.

**Come Support from the Sidelines!** Come along, enjoy the atmosphere, and cheer from the sidelines! Community support makes a huge difference to our students.

### Let's Make This a Fantastic Experience

For Our Students • Our Visitors • Our Community

If you can help in any way, please contact the school office.

The Top of the South Island (TOSI) Tournament is a major annual event that brings together area schools from across

the upper South Island for a week of sport, culture, and community spirit.

### What is TOSI?

TOSI is a multi-sport and cultural festival that rotates its hosting duties every seven years between seven participating schools:

- Tapawera Area School (This year's host)
- South Westland Area School
- Murchison Area School
- Collingwood Area School
- Karamea Area School
- Reefton Area School
- Rai Valley Area School

### More Than Just Games.

While the competition is fierce in sports like rugby, netball, basketball, volleyball, and football, the tournament also celebrates non-sporting talents through events like the popular Technology Challenge.

### The Pathway to National Success

TOSI isn't just a local trophy hunt; it is the official trial for the New Zealand Area Schools (NZAS) National Tournament.

- **The Goal:** Students perform at TOSI to get scouted for the TOSI Regional Team.
- **The Big Stage:** The Regional Team then competes at Nationals, with the chance to be selected for South Island or New Zealand representative teams.
- **A Winning Legacy:** Our region is currently at the top of its game—in 2024, the TOSI team was crowned Overall National Champions in Te Awamutu!

## Wednesday

Time	Activity	Numbers	Location
8:15 am	Morning Briefing		Meeting Room
9 am -12 pm	Paintballing Art Challenge Adventure race	10 = 5B 5G 2 8 = 4B 4G	Armageddon Art Room School field/Shedwood
Rolling lunch	<b>Lunch</b>	Everyone	
12 -3 pm	Badminton Mixed Playball Indoor bowls Art challenge and Art challenge judging	4 = 2B /2G 8 = 4B/4G 4 = 2B 2G 2	Gym Field Shedwood hall Art Room
3 pm	Home Time	Everyone	
5:30	Staff dinner	All staff	Wakefield Hotel

## Thursday

Time	Activity	Numbers	Location
8:15 am	Morning Briefing	Staff	Meeting Room
9 am-12	Girls Netball Boys Ultimate Wearable Art Challenge	8 8 2-4	Courts Field Art Room
12 pm	<b>Lunch</b>		
12:30 – 3:30 pm	Ki o Rahi Golf Wearable art Pickleball	10 2 2-4 4 = 2B 2G	Field Golden Downs Art Room Tennis courts or the gym (Weather dependent)
4 pm to 5:30 pm	Wearable ARTS JUDGING/Parade Skit	Everyone	Gym
6:15 pm to 7 pm	Children can get ready	for social	
7-10 pm	Social	Everyone	SHEDWOOD HALL
7:30 pm	Selection Meeting	1 staff Member	School Staffroom
10 pm	Children head home		

## Friday

Time	Activity	Numbers	Location
8:15 am	Morning Briefing	Staff	Meeting Room
9 am	Naming of Teams	Everyone	Gym
9:30 am	Poroporoake	Everyone	Gym



## Letters to the Editor

Dear Editor

If you registered as members of TDCC (now a legal requirement under the Incorporated Societies Act), you were invited to attend the recent TDCC handover meeting as observers - a shambolic and disheartening event. Most of the 'observer' audience present were anti- the outgoing committee and vocal in interrupting the proceedings. They weren't people who were evident in times of need in Tapawera like during last year's floods but happy to make nasty and sometimes ill-informed comment. No-one is perfect. We all have clay feet and it was an error of judgement at last year's AGM to propose the strong resolution to sell the Community Centre to support the community contribution for establishing the Hub, a new, fit for purpose village centre. But at least the event generated engagement by the community viz what should be done going forward, which was a positive.

The incoming committee has a tough path ahead. They are privileged to have very significant funds allocated to assist Tapawera. Hopefully those funds will still benefit our community. I came away from the meeting regretting not having spoken to the contribution of the outgoing committee.

Yes, I am married to the outgoing secretary so I must have a bias. However, it means that I have been privy to witness some of the contribution that members have made over the years since Tim became secretary 12 years ago. I also had a spell as Chair of the TDCC sub-committee established to organise the WWI centenary commemoration event in 2018. Tim has regularly come home near 10.30pm on the 3rd Tuesday of the month for years. There's a huge commitment been made by the volunteer committee members whose intention and commitment to the wellbeing of the Tapawera wider community has been significant and sincere. Stuart Bryant has given 26 years to support the Tapawera community and in recent years, been really good at it. After Carolyn Ellis and then Susan Creedy stepped down as Chairs, Steve stepped in to fill the gap that most people don't seek. The contributions of Heather, Gavin, Nicola, Geoff, Wayne & Lisa, besides Steve and Tim, merit acknowledgement and their cooperation with the efforts of Tapawera Connect folk. Gill does a wonderful voluntary job doing the Informer and agreed to support on the accounts after Samdy stepped down. Susan does the audit and steps up to be Returning Officer. Many thanks to you all.

Jo

### Letters to the Editor – Submission Guidelines

TDCC welcomes your thoughts, opinions and feedback. To ensure respectful, constructive and relevant discussion, please follow these guidelines when submitting a Letter to the Editor:

- Keep your letter under 400 words.
- Be respectful and civil, even when expressing disagreement. No hate speech, defamation or misinformation.
- Include your name and contact details.

- Email letters to [tapawerainform@gmail.com](mailto:tapawerainform@gmail.com) and [tapaweratdcc@gmail.com](mailto:tapaweratdcc@gmail.com) by the first Tuesday of the month.

Letters may be edited for length, clarity, or grammar, and may be referred for comment before publication. We reserve the right to decline letters that contain personal attacks, hate speech, discriminatory language or misinformation.

*Letters are the opinion of the author and do not reflect the opinion of the TDCC or the Informer.*

## THE CHURCH BELL IS RINGING



Last month we looked at the beginning of the Bible, in Genesis. And right there, at the beginning, we see a pattern that God has instituted: that night is always followed by the day. See Genesis 1. It's the way God has designed things. Isn't this an encouraging word, I hope that encourages you today, If you're in a night season or a dark season, it will be followed by the day. It's the pattern of God. My own father was in a dark season and at 59 years of age unfortunately, he took his own life. He didn't know that a day would follow that dark night. So sad, I do believe he cried out to God but that's another story for another day.

In March we will be going a little bit further into Genesis and we're going to look at some stuff in the garden of Eden. It may surprise you what happens or you might not have seen all aspects, things you've never considered maybe. And remember.....

## YOU'RE INVITED...

Adults only at this stage (16 years and over). Come even if you are not a believer but want to know more. Or come if you are a believer and join me digging into the bible. I love the Word of God - it literally changed my life.

Feel free to reach out

Tania O'Meagher.

Pastor, City Gate Church. Nelson

M: 021803411 [www.thewordofgodchangedmylife.com](http://www.thewordofgodchangedmylife.com)

Last Tuesday of every month  
St James Church, 797 Tadmor Valley Road,  
6pm.  
Followed by a (BYO) picnic tea at 7pm  
BYO blanket and hottie if need be :-).

**Book Discussion Group**

Meet: 4th Thursday in month, 10am  
 Contact: Adrienne Baigent 021408892

**Federated Farmers**

Contact: Harry Matthews - Field Rep -  
 0275078901

**Golden Bush Garden Club**

Meet: 2nd Thursday of month  
 Contact: President, Linda Milsom  
 02102510945, or Shirley Percy 5224924

**Golf**

Meet: every Sunday, Ladies 9 hole  
 every Tuesday  
 Contact: Gary Oldham ph. 0278080578

**Historical Society**

Contact: Barbara Carleton ph. 5224317

**Informer**

PO Box 15 Tapawera  
 Email [tapawerainformergmail.com](mailto:tapawerainformergmail.com)

**Justice of The Peace**

Peter Phillips ph. 5224313  
 John Ellis ph. 021 522429  
 Brent Hodgkinson ph. 5224381  
 Susan Fenemor ph. 0275224009 (text  
 during school hours)

**MENZSHED**

Contact: John Wilmshurst ph. 5224616

**Netball**

Contact: Susan Fenemor ph.  
 0275224009 (text during school hours)

**Ramblers**

Meet: each month  
 Contact: Shirley Percy ph. 5224924

**Shedwood Hall bookings**

Contact: Tania Higgins ph. 5224587

**St Andrews Church Stanley Brook**

Services every Sunday. Cup of tea  
 afterwards.

Contact: Lee Winter ph. 5224160

**St John – Tapawera  
For emergencies Dial 111,**

Email [info@stjohn.org.nz](mailto:info@stjohn.org.nz)

**Tapawera & Dist. Community Church  
St. Peter's Tapawera: no services at  
present**

Contact: Church office 03 541 8883  
[wakefieldanglican.xtra.co.nz](mailto:wakefieldanglican.xtra.co.nz)  
 Urgent enquiries to Andrea 0024169386

**Tapawera Food Bank**

Contact: Suzzi Lankshear ph.  
 0277491063

**Tapawera & Dist. Community Council**

Meetings: 3rd Tuesday of month,  
 7pm Tapawera Community Centre,  
 email: [TapaweraTDCC@gmail.com](mailto:TapaweraTDCC@gmail.com)

**Tapawera Community Centre**

Email: [tapaweratdccc@gmail.com](mailto:tapaweratdccc@gmail.com)

**Tapawera Connect**

Contact: Rachel Moffit ph. 027 460  
 8728, email:  
[opsmanager@tapconnect.onmicrosoft.com](mailto:opsmanager@tapconnect.onmicrosoft.com)

**Tapawera Creative Fibre**

Meet: every Wednesdays, 10am-2pm,  
 Memorial Hall  
 Contact: Catherine Hesketh ph. 027 522  
 4266

**Tapawera Jujutsu Club**

Contact: Tony Hammersley ph. 5224609

**Tapawera Op Shop**

Currently closed

**Tapawera Playcentre**

Meet: Mon & Thur, 10am -12:30pm  
 Memorial Hall ph. 5224456

**Tapawera Rugby Football Club**

Bookings: ph. Judy Benjamin 5224445

**Tapawera Sport & Recreation Society**

Contact: Judy Benjamin ph. 5224445

**Tapawera Volunteer Fire Brigade**

Contact: Dean Millar Chief ph.  
 0279651399; Ted Oakly Deputy Chief  
 ph. 0210704033

**TAS / Community Library**

Mon-Fri 10:30am-1:30pm. Contact: Kelly  
 Library ph. 5224337/ext. 213

**TESSI**

Contact: Bruce Whyte ph. 5224550

**Visual Arts Society Tapawera**

Contact: Dallas Robinson ph. 5224984

**Yoga with Josie**

Wednesdays 6-7pm school music room  
 (school term only).

Contact: Josie Orr: 027 612 5813

**Wakefield Police**

Constable Jamie White –  
[jamie.white2@police.govt.nz](mailto:jamie.white2@police.govt.nz)  
 Constable Matthew Berquist –  
[matthew.berquist@police.govt.nz](mailto:matthew.berquist@police.govt.nz)  
 Non Urgent (CRL) – Call 105  
 Happening Now – Call 111

**What's on  
March**

- 3 TDCC deferred February  
monthly meeting, 7pm, Rugby  
club rooms
- 4 Netball club Player Registration  
Day for ages 5-18, followed by  
meeting for parents and players  
interested in SSIS, 3.15pm,  
school netball courts
- 8 International Women's Day  
event, 5pm-7.30pm, Shedwood  
Hall
- 10 Tapawera Talking Café, 10-  
11:30am, St Peter's Church
- 10 Digi Drop-in Session, School/  
Community Library, 11am-1pm
- 12 Garden Club, 11am, Cath  
Smart's property in Pigeon  
Valley
- 15 Haycocks Bush community  
weeding bee, 9.30am-1.30pm,  
2094 Motueka River West Bank  
Road
- 17 TDCC monthly meeting, Rugby  
Club rooms, 7pm
- 20 Articles for Informer close 5pm
- 28 Tapawera Netball Club quiz  
night, 7pm, Rugby club rooms
- 31 Tea and Talk, St Peter's  
Church, 10:00am - 11:30am
- 31 Bible study, St James Church,  
797 Tadmor Valley Road, 6pm
- 29 Craft and Market Day, Village  
Green, 10am-2pm
- 1 April Preserving workshop, 6pm-  
9pm, Tapawera School kitchen