

TDCC News!

Your new Community Council formerly took the reins on 17th Feb this year, and whilst it's only been four weeks, what a ride it has been!

The team has been working on both practical and administrative issues, with some pace.

Op shop: The surprisingly-large shed beside the Community Centre is getting a comprehensive renovation, complete with lining and insulation, and will soon open as the new (temporary) op shop. Our intention is that in future, once the main building is back in service, the renovated 'shed' will serve as an additional community space, for meetings or group activities. There have been some generous offers of materials and labour for this project, and we welcome your input. Also, if anyone has 9mm sheets of 2.4 x 1.2 mdf or jib you'd like to donate, or bales of wool batts, we'd be delighted. Contact Kieri 0273259871 if you can help.

Bike racks: With the surge in cyclists coming through the area, we are installing extra bike racks near the Community Centre. The Tour Aotearoa bike trail, from Cape Reinga to Bluff, now comes through Tapawera, and the cyclists like to pause their journey here; bike racks is a practical service which will encourage them to stay awhile.

ANZAC parade: TDCC is proud to be presenting a refreshed ANZAC parade this year, 9am at the Memorial gates on the main road. We have consulted with RSA and will be acknowledging those who served in other wars, in addition to calling the Roll of Honour for both World Wars.

Roading: John Ward, TDC local Councillor, has agreed to do some urgent advocating on our behalf in regards to some roading issues, particularly Tadmor Hill road which has a slump causing much concern. John is also working on getting TDC to deal with the young pine trees on the Kohatu Cut and Sherry-Tui road which have been planted too close to the roads; cheaper to deal with now than when they are nearing maturity and causing problems for motorists.

Paperwork: We have appointed an Auditor who is doing a report for us on the accounts for the year end June 2025. Any recommendations he makes will be welcomed by the team. We have begun work on replacing the constitution with a much more community-minded version, and thanks to a very kind offer from our TDC ward Councillor, John Gully, we should be ready to consult you all on this very soon.

Community Centre: We inherited a closed building, and have been working to understand the issues, as well as protect what we have. The building has been bug-bombed comprehensively, and vermin traps have been installed. At the time of writing we are hopeful that a second opinion regarding the seismic risk of the building, and what's required going forward, can be achieved without delay. Our aim is to have a rejuvenated and more user-friendly facility open as soon as practicably possible, complete with heating, running hot water etc. There have been some exciting ideas put forward and we intend to consider them all.

Membership: We encourage you to join the 106 folk who have already joined. It's free, only takes a few minutes, and commits you to absolutely nothing. Unfortunately we can't offer a million dollar prize draw as an incentive, but hope you'll join anyway! A growing list of members will assist when we apply for funding for the building renovation projects, as it shows the community is supportive.

Meetings and you: All of our monthly meetings are now open to the whole community, and we provide supper so you can enjoy community time afterwards. Members are being sent the agenda beforehand, and meeting minutes afterwards, so you can keep up with the play. With so much happening, we promise interesting times. Please feel welcome to bring your feedback about anything you think we might be able to help with e.g. roading, rivers, trees, accessways, signage, phone service, recreational areas.... and the list goes on. You bring it; we'll see what we can do.

Any enquiries? Contact any of the Community Council (see our profiles in this month's Informer) or email us at tapaweratdcc@gmail.com

**ANZAC Day Parade**

9am Saturday 25th April

To be held at the Memorial Gates, Main Road, Tapawera.

TDCC is proud to announce a refreshed program for this year's ANZAC Day.

Our national day of remembrance for New Zealanders killed in war, and honouring returned servicemen and women, will include the WW1 and WW2 Roll of Honour, and also acknowledge those who have served our nation in other wars.

Morning tea provided.

We look forward to seeing you there!

Enquiries to Kieri Williams 0273259871

The Lady Tradie

Has your husband got a **round**



Spring has sprung
and the grass has riz !
Do you wonder where a handyman is ?
Can't get one ?

Then call " Jen the Lady Tradie "
for all your outside spring clean-up jobs
* Gutters full of leaves;
* Lawns that are starting to bolt;
* Waterblasting those slippery paths
and all that spring growth that just might get
away on you.

*** Local Person * Referees Available ***

Consideration & discount shown towards Senior Citizens

FREE QUOTES

Contact Jennifer

Phone or text: 027 544 2663

After hours/leave a message: 03 522 4453

Email enquiries to: jentheladytradie@gmail.com

TAPAWERA ELECTRICAL

Tony Stephens

Registered Electrician

Ph/fax 5224257

0276249489

Renae 0275616510

All electrical needs

Domestic & Rural

Wiring, faults, some home appliance repairs

New heat pump installations



Free Quotes

Competitively priced

RURAL POST, RD 2 Wakefield

Contact Nick & Jackie Costley for all your RD 2
Wakefield postal needs.

Including prepaid envelopes, stamps, courier
items and local freight from Wakefield, Dovedale
and Tapawera. Prescriptions from Wakefield.

Phone 0275418581

Mark & Tania Gill

T/A MTJ Transport

RD2, Nelson

NZ Post Rural Contractors

Servicing

Motupiko-Korere-Kikiwa-Tophouse-St Arnaud-Glenhope

For all your Postage, Milk & Courier Freight

Operating 3 Days Weekly
(Monday-Wednesday-Friday)

Departing Nelson 8.00am

Phone 546 6295

Material & adverts for Informer

All material is to be sent to either:

Informer, PO Box 15, Tapawera, 7055

or email- tapawerainform@gmail.com

To be received by 5pm

20th of the Month

If emailing a word document please send in Word as an
attachment.

If sending an advert please save as a jpeg before sending.

Please check your emails to see your article/advert has
been received as sometimes there needs to be alterations.

Advertising rates for Informer

Standard ad	Pay monthly	Pay annually
1/4 page advert	\$39	\$343
1/2 page advert	\$54	\$475
Full page advert	\$78	\$686

Adverts that require editing may cost extra

The Informer is produced and published by the Tapawera and Districts
Community Council, PO Box 15, Tapawera, 7055;

email: tapawerainform@gmail.com

Circulation 635

Editor: Gill Hammersley

The Editor and Publisher try to ensure information published is truthful

and accurate, but do not accept any responsibility for errors or
omissions, or for any consequences of readers' relying on the
information published. Opinions expressed by contributors may or may
not be endorsed by the Editor or Publisher.

All material submitted, whether editorial or advertising, is accepted at
the discretion of the Editor and the Publisher.

Meet your new TDCC (Tapawera and Districts Community Council):

President, Roy Bensemenn:

Yvonne and I have had a sheep and beef farm in the Sherry River valley since 1987. During those years I have done a couple of stints on the TDCC. Now retired I enjoy spending time with family, bike riding, a bit of traveling, odd jobs around the farm, and doing volunteer DOC trap lines to protect Whio up the Wangapeka in Kahurangi National Park.

Kieri Williams:

I'm married to Brett and we have an amazing daughter, Bella.

I have lived in the Tapawera community for over 20 years. I've previously worked at Goldpine and Alliance meat works, and the Tapawera Hotel, then for the past 9 years at the Tapawera four-square.

I enjoy crafting, and was a part in the starting of the Tapawera market. I enjoy raising funds for community projects and helping where I can.

Geoff Proffitt:

Have lived on our property in the Upper Wangapeka for the past 30+ years. Worked in a variety of jobs, including a stint as owner-operators of the local dairy/takeaways.

Now retired and taking time out to enjoy life.

Julie Jacobsen:

I, with long time partner Aaron, own and operate the Tapawera Campground business, living on site, year round.

Settling in Tapawera in 2021, I am fully invested in the resilience of our small town, recently taking on the empty Main Road Cafe space to open a much needed food outlet, PIZZA PLUS

Dean Walls:

I have spent half my life living overseas, working on construction projects across the world, including dams, mines, railway lines etc. In NZ, I ran the logging at Maungarakau, and have had a construction business, as well as farming deer. I lived in Tapawera in my twenties, working in various roles. Now retired in Tapawera, I hope to stop working one day.

Secretary, Trish Palmer:

Living up a quiet side valley in Stanley Brook for thirty years, I enjoy family, restoring our native bush and wetlands, writing for publication, and doing at least 3 things each year that I've never done before. Last year that included training as a marine medic for whale strandings. Have had an interesting career, including management and empowerment, but to be honest I am happier wielding a spade to put food on the table, and hosting the numerous travellers who come by.

Joy for Ten Bucks - Zumba with Kenzie

Soon after moving to Tapawera, nearly 18 months ago, I met Kenzie serving at her Mollies coffee cart. She invited me to join her Zumba class. I'd seen signs advertising Zumba before and knew it was some form of dance exercise but being ultra unco-ordinated I'd never thought to try it. When I said that to Kenzie she said EVERYONE feels that at the start, but it passes after a few classes.

It took me a year to pluck up the courage and I am so glad I did. It's brilliant fun. I still sometimes walk left when I'm supposed to be going right or put up the wrong arm – but so does everyone (sorry to my fellow Zumba crew haha).

There is so much laughing and no one cares how you are doing. There's no judgement. Kenzie's talent and enthusiasm carry us all through. She even choreographs great new sequences just for us!

I'd say Zumba is simple series of moves, some quite dance-like and some more exercise-like, set to music with lots of repeating. The music is a mix of RnB, Latin-style tunes and some Disney favourites. It's the sassy, sociable young cousin of the old aerobics that was on TV when I was a teenager. Kenzie leads and we all copy – more or less! Its quite free spirited and there's no correcting or detailed instructions to follow. If you get hot, tired or want to skip a section that's totally fine. It's an incredibly friendly and relaxed group.

The science shows we get more benefit from the same level of exercise when we do it to music. Its magic for our bodies and joy for our minds.

If you're looking to meet other locals, or a way to get a hardworking body loosened up, or to have some more movement in your life as the days get shorter, I highly recommend Zumba at Tapawera. Its 5pm to 6pm on Tuesdays, during school term time, at Shedwood Hall. It's \$10 a week and \$5 for your first time. Just wear comfy clothes and shoes you can move in, like you'd wear for a walk along the cycleway. It'd be great to see you there!

Katherine Dewar



Shedwood Bush: Local Leadership, Youth Energy, and a Growing Pollination Pathway

By Dana Carter, Motueka Catchment Collective

Early March offered a snapshot of how Shedwood Bush in Tapawera is cared for: local volunteers leading the work, supported by technical expertise when needed, and young people stepping in to learn the ropes.



Tuffnell

2017 LIMITED

Plumbing Drainage & Gas

LOCAL • RELIABLE • EXPERIENCED



WE SPECIALISE IN ALL THINGS PLUMBING

- Leaking Pipes & Taps
- Kitchen & Bathroom Renovations
- Hot Water Pressure Upgrades
- Solar Hot Water
- Gasfitting
- New Housing & Commercial
- Drainlaying & Wastewater
- IQP Backflow Testing
- Blocked Drains - CCTV Camera Inspection
- 24 Hour Emergency Service
- Master Plumbers Guarantee
- Free Quotes



Certifying Plumbers, Gasfitters & Drainlayers Since 1915

Call 03 543 8090

0800 129 683

info@tuffnell.co.nz

www.tuffnell.co.nz



f Find us on Facebook
www.facebook.com/tuffnell/



Shedwood Bush cont.

On a clear, sunny morning, Fish & Game’s Jacob Lucas headed up the track with young volunteers Braden and Cody Coleman, joined by Motueka Catchment Collective’s Dana Carter, to collect in a line of wasp bait stations and check the pest traps spread through the bush.

This work sits within a much wider effort led by the Shedwood Bush Betterers (SBB) — a group of around 20 locals who maintain the tracks, clear Old Man’s Beard, run the pest-control network, and keep this important upper-catchment forest thriving. Jacob’s role is to support them with technical trapping guidance, and wasp-control expertise, helping build capability so the community can continue to lead the mahi long term.

Wasp Control and Trap Checking



Braden drilling the bait station off the tree

The team collected 60 Vespex bait stations that Jacob had set out a week earlier. Early March is peak protein-feeding season for wasps, and the quiet bush told the story: the baiting had worked. In past years, parts of the forest hummed with wasps at this time of year. This time, cicadas were the only soundtrack.

“That’s exactly what we want to see,” Jacob said. “When the stations come back empty and the bush isn’t buzzing, you know the nests have taken a hit.”

Trap checks were just as encouraging. One AT220 had caught five possums and several rats in a couple of weeks, while another has recorded around 30 possums since installation. A DOC200 also picked up a ferret — a rare but important catch for this part of the region.



Jacob holding a ferret caught in one of the DOC200s

The trapline was purchased through a \$7,000 Tapawera Connect Charitable Trust grant and is now maintained by SBB, who check them regularly and keep the network running.

Next-Generation Kaitiaki



For Tapawera local Cody Coleman, the day was part of his growing involvement with SBB. He now helps with trap checks and working bees, and he’d convinced his brother Braden to join the trip.

“I’d only been to the bottom part of the bush a couple of times before I joined the group,” Cody said. “Now I’ve been all the way to the top.”

Tapawera Area School and Tapawera Kindergarten added their own spark last August with a lively community planting day at Shedwood Bush. For many tamariki, it was their second year returning to dig, plant, and get muddy — a growing connection to their local ngahere. The school, now part of the Nurseries in Schools programme with support from Tasman Bay Guardians and MCC funding, is close to finishing its native nursery, soon supplying plants for both Shedwood Bush and their annual fundraiser.



Reflecting on the day, Kate Radloff said:

“What made this day so special was seeing tamariki, educators, and community groups all working side by side.”

The event brought together the Shedwood Bush Betterers, Tasman Bay Guardians, Tapawera Connect, and Jacob from Fish & Game, with plants donated by the Tapawera Propagation Group — a display of community energy behind the bush.

Tapawera Community Craft and Market Day

Last Sunday of the month



Across the road from 4 Square
on the village green, 10am to 2pm.

Bring along your crafts/produce
/unwanted items to sell.



Enquiries to Amanda Beer on FB messenger or via the Tapawera and Surrounding Valleys FB page.

THE CHURCH BELL IS RINGING



Last Tuesday of every month
St James Church, 797 Tadmor Valley Road,
6pm.
Followed by a (BYO) picnic tea at 7pm
BYO blanket and hottie if need be :-).



Last month we continued reading through the book of Genesis. One thing we saw is that another voice came in that garden, and it influenced the mind of mankind. This other voice wanted to take control of our whole being, to turn us so that we would doubt the love and goodness of God. I'd like to say with confidence and assurance from walking with God over 30 years, He is good and He is full of love. Contrary to popular belief He didn't throw mankind out of the garden in disgust and distance Himself.

Come join us monthly but even better pick up a bible yourself, read it through and I encourage you to ask God to open your heart and mind to the truth that He is loving, He is good and He wants to be in your life.

We'd love to see you at the study Tuesday 28th April

YOU'RE INVITED...

Kids now also welcome. Come even if you are not a believer but want to know more. Or come if you are a believer and join me digging into the bible. I love the Word of God - it literally changed my life.

Feel free to reach out

Tania O'Meagher.

Pastor, City Gate Church, Nelson

M: 021803411 www.thewordofgodchangedmylife.com



Shedwood Bush cont.

A Forest With Deep Roots — and a New Future

Shedwood Bush has long been part of Tapawera’s identity. Older locals remember it as a training ground for teenage NZ Forest Service cadets, who learned bushcraft and forestry skills on these same slopes. Today, the forest is again becoming a place where people learn practical conservation skills — this time through community-led restoration.

Across the wider project, locals contribute in different ways: supporting native planting with the school, tackling Old Man’s Beard and valley-floor regeneration, leading the trapping programme, and supporting partnerships across organisations. Together, these efforts form the backbone of the Tapawera pollination pathway, linking the village to the bush and strengthening habitat for birds, insects, and people.

“Shedwood Bush is a key anchor in the pollination pathway we’re building from the village gardens and reserves right up into the hills. The more people who walk the track, learn a few micro-skills, and feel connected to the place, the stronger that pathway becomes for both wildlife and the community,” says Mark Soper, a lead member of the Shedwood Bush Betterers who also manages the relationships between Tapawera Connect, the Department of Conservation, and the wider community.

Building Community Guardianship

Encouraging more people into Shedwood Bush is a key part of the plan. The track is one of the region’s best short family walks — well graded, about two hours return, and offering sweeping views over Tapawera and the Tadmor and Motueka valleys. But it’s also a place where locals can learn the small, practical skills that keep a forest healthy:

- trap checking and maintenance
- track care and drainage
- weed control and species ID
- monitoring birdlife and seasonal changes

These skills strengthen the community’s connection to the bush and help ensure the work continues across generations.



Large beech trees near the top of the Shedwood Bush track

A Forest that matters for Tapawera

As Jacob said while packing up the last bait station:

“There’s a good bird population here worth protecting —

and with the community behind it, the bush is only going to get better.”

Shedwood Bush is more than a track. It’s a community-led project, a training ground, a link in a growing ecological corridor, and a place where the next generation is already stepping forward.

If you are interested in becoming a volunteer at Shedwood Bush, see our volunteer recruitment survey here: <https://www.surveymonkey.com/r/DPVF6GM>



Tapawera Netball Club March News

We had our school aged trials a couple of weeks ago. It was great to see some new and returning players. We are excited to see how these teams grow over the course of the season.

QUIZ NIGHT!

We are looking forward to seeing everyone at our upcoming quiz night! We have had some awesome donations by businesses so come along and see if you can grab a prize! Please note that this event is BYO drinks and nibbles.

Please get your teams in ASAP by emailing tapaweranetballclub1988@gmail.com.

Team Update:

This year we will be having a Year 3-4, Year 5-6, High School team and two Senior Women teams. It’s great to see so many people interested in playing netball.

Sponsorship:

We are looking for naming right sponsorships for some of our teams. If you would like to sponsor or know someone who would please reach out to us at tapaweranetballclub1988@gmail.com. This sponsorship helps to reduce subs and pay for playing equipment. Thank you to our sponsors who have come on board so far this season, we really appreciate it.

We have a **Tapawera Netball Club Facebook** page where we will update you on how our teams do throughout the season. We also have our email address, so feel free to reach out to us at tapaweranetballclub1988@gmail.com.

Lissie Anglesey
Club Secretary



WADSWORTH MOTORS LTD.

- Coach Charters & Tours
- Mini Bus Hire.
- School Transport
- Professional friendly drivers
- Members of the Bus & Coach Association

Over 100
Years of
Service

wadsworthmotors@xtra.co.nz
100 Main Rd, Tapawera
www.wadsworthmotors.co.nz

027 4873167



"...for all creatures great & small..."

Your locally owned vet clinic,
serving the Nelson Tasman region for 30 years

Phone: 544 1200
25 Edward Street, Wakefield
3 Brock Way, Richmond
info@tcvet.co.nz

Nelson / Tasman |
Tall Poppy
BUSINESS TEAM

REAL ESTATE MADE EASY

I'm in your community

- Fair Fees
- Free Appraisals
- Nationwide buyer match
- My Tall Poppy Dashboard

Our marketing plans:
Free Ignite and Platinum plans

Tall Poppy has qualified buyers actively searching for the right property.
Call me, please, about your property's market potential

AMBER DIACK
Licensed Salesperson (REAA 2008)
021 0881 1926
amber.diack@tallpoppy.co.nz



Tapawera CONNECT

Senior's Snippets April 2026 with Janine Leeden,
0277525975

One of the things hubby and I have often talked about is that everyone has a story to tell. Once we're gone that story is lost unless we, or someone who is interested, records it, it is lost. It's not until we generally hit our 50s that we suddenly realise we haven't bothered paying much attention to the lives of our forebears, and suddenly, when health issues etc arise we become more curious. Some people have lived amazingly adventurous, pioneering or creative lives, where others think their lives have been boring. There is a story in each of them.

On the **28th April**, our **Tea and Talk** Guest Speaker at St Peter's Church will be Michael Richard Brown from Motueka, who has recently launched the first of three of his memoirs, 'A Boy's Journey'. The topic:

* A Conversation About the Hidden Benefits of Writing Your Memoir

Michael says: I never realised the effect my memoir would have on readers my own age.

The strongest response, by far, has been how deeply people relate to my childhood experiences.

Writing the story uncovered deep feelings I hadn't expected — and prompted readers to rediscover distant memories in their own lives.

Michael also has a Facebook page: <https://www.facebook.com/MichaelBrownMemoirTrilogy>

Please feel free to come along and hear what motivated him and to get some ideas about maybe recording your own story. Remember with technology nowadays, it doesn't have to be laborious.

Wellby Talking Café is for everyone and is now at St Peter's Church on the 2nd Tuesday of every month. **For April the date will be Tuesday 14th.....10am-11.30am.** If you work from home, or are just sick of looking at four walls and want to connect with others in your community, you are welcome to come along! We encourage friendly positive discussions and encourage everyone to feel heard and valued.

Sit and Be Fit continues **every Friday** morning with fun and fitness of the mind and body paramount.

*As bad as you want to address it,
Some things are better left unsaid.*

I'm learning.



Tapawera Creative Fibre

Well, after a few hitches and hiccups our group finally got on the road for our Magical Mystery Tour. Straight up meet at the Memorial Hall then follow the map that was provided. First stop, down the

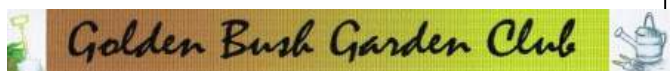
Motueka Valley to Hurley Road where we met Linda, quilter extraordinaire and the owner of sewing machines to drool over, a beautiful dog and a patient husband invaded by x number of women all ogling his wife's studio. We also talked to her about our project for Cancer House, Langdons Rd, ChCh. Wonderful. Then on to Motueka for lunch at Muses Café, very nice. Our next stop the new Motueka library and very lovely head librarian Janine who gave us a comprehensive tour of the library and the facilities available to the public patrons including a board games room, perfect.

Our next stop was Joint Works on the Tasman Mapua Art Trail. Jane and Tony run a joined workshop, Jane does the most beautiful weaving and Tony works the woodworking side of their business. Tony was away that day but I must confess that I bought a beautiful turned walnut bowl that I totally fell in love with. Please visit the studio you will be wowed!!

Following all that we made our way back to Tapawera, my boarder Abbie from Taiwan was blown away by the day and thoroughly enjoyed the day as we all did. Huge kudos to Etta for organising a wonderful day out.

Our new contact for Creative Fibre Tapawera is Catherine 027 522 4266.

Cheers Dal



Garden club was held at Cath Smart's Dahlia garden, Pigeon Valley.

A stunning display and variety that Cath has been propagating for decades, a skill she learnt from her grandfather. Cath also had useful tips and ideas on keeping the plants healthy.

The next meeting on 9 April will be at Willowbank (just south of Wakefield). For members the entry fee & morning tea will be paid by the club.

Raffle & auction.

Autumn a visual season of bright reds, oranges, yellows & green - a last burst of colour before the garden dies off for winter hibernation. With cooler nights, frosty mornings and beautiful settled days, what isn't to like about this time of year.

Save Money. Share the Ride.



Fuel prices are through the roof. Have extra seats? Share the cost. Trippr is a simple, local ride-sharing app that makes getting to town cheaper and easier.



Scan to
download
Trippr

How it works...

Drivers:

- Register with a valid licence
- Add your vehicle details and payment info
- Add your trips (one-off or regular)
- Set your price per seat (or offer free rides)

Passengers:

- Sign up and add your card
- Find a ride that suits your route
- Message drivers to arrange pickup
- Pay securely through the app

Have questions or need help getting started?

Drop-in's with Della:

Molly's Coffee, Wednesdays,
10am-12pm

Email:

connect@tapconnect
.onmicrosoft.com



Tapawera Community Connection Update – April 2026

Do you want to connect to others in our community? Read on for information on what's been happening in our village and more fun ways to get involved.

Celebrating International Women's Day

This community event held at Shedwood Hall was centred on connection, wellbeing, and resilience. While enjoying beverages, and delicious food prepared by Friends of the School, over 40 local women heard inspiring stories from two speakers – Wendy Strawbridge and Marina Kurban. The stallholders and information stands were also impressive, and I encourage everyone to support our local groups and businesses. The feedback from the evening was overwhelmingly positive and we will be looking at doing something similar next year.



Workshops



Dehydrating Workshop – April 2026

Dehydrating is a great way to help become food resilient, ensuring a longer shelf life of food, while maintaining flavour and nutrition.

There are many ways of dehydrating food such as: using a dehydrator, oven drying, sun drying or air drying. Many fruits, vegetables, meats and herbs can be suitable for dehydrating.

This is something we would like to offer in late April, taking advantage of the apple season. **Please contact me to register your interest.**

Chainsaw Safety / Repair – May 2026

I am currently taking registrations of interest for a chainsaw safety and repair workshop. Please let me know if you would like to be a part of this. **If anyone would like to facilitate this workshop, please contact me as soon as possible (funding is available).**

First Aid workshop – 3 steps to life

A big shout out to St John who spent a Saturday morning in February teaching a few of us locals what to do in the event of someone having a cardiac arrest. I recommend downloading the AED Locations app, which will show you where your closest AED is located.



Ride Sharing



With fuel costs skyrocketing and us being an isolated rural community, it is more important than ever to work together to share transport. This also cuts down on emissions and builds connections with other locals.

After researching a few different ride sharing apps I have found Trippr NZ to be easy to set up and navigate, as both a driver offering seats or as a passenger looking for a ride. The key to success with this app is to have as many people as possible logging their planned trips. The driver can state how much financial contribution is required, if any, and how many seats they have available. You are not committed to doing return trips and payment is all done by the app. **I will be at the coffee cart on Wednesdays from 10am to 12 noon if you would like help to download and use this app.**

Support

If you or anyone you know needs any assistance or support, talk to us and we can point you in the right direction.



Confidentiality is assured. Our Community Centre office is currently closed, but for support advice please call me or try our mobile office number: **027 436 1937**

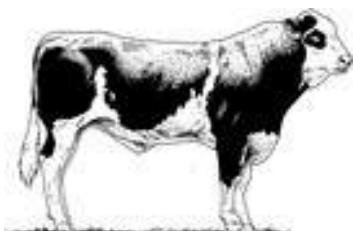
Della Webby, CLDP Community Connector.

Connect@Tapconnect.onmicrosoft.com Phone: 027 479 4420

Gillespie—1

MAF approved

Home kill butchery

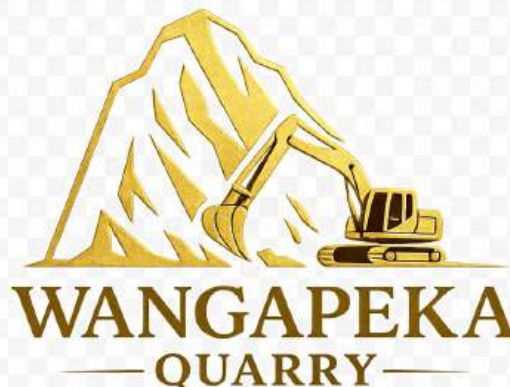


03 547 7746

Butcher / journeyman

Specializing in quality small goods

Factory: 111 Bolt Rd, Nelson



AgLime, Gravel, Big Rock, Decorative Chip

Ph 021805476

Wangapekaquarry2025@gmail.com

140 Wangapeka Plain Road Tapawera



All Accounts Matter LTD

**For all your accounting
and tax needs!**

If you are looking for a new Accountant, now is the perfect time! I would love to find out about your business and have a no obligation chat about how I can help you. So don't wait, call me now!

Sonia Emerson Chartered Accountant

GST | Tax Returns | Payroll | Bookkeeping | Cashflow Forecasting
Management Reporting | Rental Statements | Farm Accounts



myob

2020/2021
Certified
Consultant



M: 021 221 1009 | P: 03 541 9005 | sonia@allaccounts.co.nz
367 Wakefield-Kohatu Highway, RD1, Wakefield 7095

www.allaccounts.co.nz



TAPAWERA PLUMBING AND GAS

Your Local Plumbing & Gas Experts

Need a reliable plumber or gas fitter?

Look no further than **Tapawera Plumbing and Gas!**

Based in Tapawera and servicing the surrounding areas – including Murchison.

We offer trusted, professional service with a friendly, local touch.

- General plumbing repairs & maintenance
 - Gas fitting & hot water solutions
 - New builds & renovations
- Prompt, tidy & dependable service

Contact Diego Fieldsend

Phone: 0223623195

Email: admin@tapaweraplumbingandgas.co.nz



Flu Vaccinations and Covid Boosters

The colder mornings are a reminder that winter is on its way and with it comes the Flu Season. Your best defence against the flu is to get a yearly flu vaccine. Flu vaccines are available for anyone aged over 6 months.

The nurses will have several clinics coming up so give us a call and we can book you in.

People with the following conditions are eligible for a free vaccine:

1. Children aged 6 months to 12 years with chronic conditions
2. Children 4 years and under who have been hospitalised for respiratory illness or have a history of significant respiratory illness
3. People 65 years of age or older
4. Māori & Pacific peoples aged 55-64
5. Refugee who has been through the quota programme 55yrs +
6. People under 65 years of age who:
 - have some types of cardiovascular disease
 - have either of the following chronic respiratory

diseases:

- ◇ asthma, if on a regular preventative therapy, or
- ◇ other chronic respiratory disease with impaired lung function; or
- have diabetes; or
- have chronic renal disease; or
- have any cancer, excluding basal and squamous skin cancers if not invasive; or
- pregnant women (any trimester); or
- some other rare conditions may also be eligible

If you think you may be eligible, please discuss with one of our Nurses or Doctors.

Non funded flu vaccines will be available at the same time. FLUAD@Quad is a non-funded flu vaccine available to the over 65s. This vaccine has additional ingredients that helps create a stronger immune response and costs \$50.00

There is a new Covid vaccine available for people over 30 yrs that have not had a booster or covid illness for 6 months or more. This can also be used as a primary course for people who have never had a covid vaccine. Flu and covid vaccines can be safely given at the same time.

Preventing the spread of winter illnesses

A friendly reminder to tell us when booking an appointment or arriving at the Practice if you have flu like symptoms, like coughs or colds. You may be asked to wear a mask and/or be redirected to the back door of the building.

Wellbeing Workshop at Wakefield Health Centre

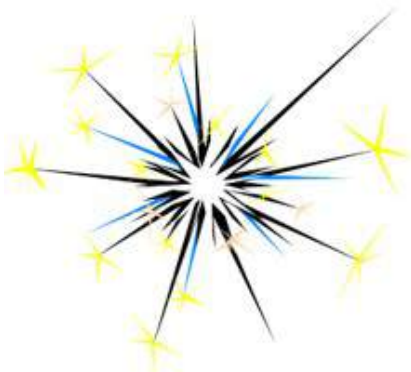
Getting Your Spark Back


Feeling a bit flat, stuck, or overwhelmed? You're not alone.

Join Dr Wayne Hurlow and Nicole Willcox (Health Improvement Practitioner) for this FREE one-hour wellbeing workshop.

We will explore how things like social media, busy minds, and everyday pressures impact how we feel — and share simple, realistic ways to improve energy, motivation, and overall wellbeing.

No pressure, no judgement — just practical ideas you can use in real life.



 **Thursday 30th April**

 **5:30pm (approx. 1 hour)**

 **Wakefield Health Centre**

Open to all patients enrolled with Wakefield Health Centre.

Ask at reception or speak with your GP or nurse to register.



**Tasman Bay
Chiropractic**

Keeping you in the game since 2002

**Referrals, families and
all new clients welcome**

Visit our website or call for more information



03 544 4554 Monday-Saturday
tasmanbaychiropractic.co.nz

Find us on  

HANDYMAN

- * General property maintenance
- * Clean out/tidy up
- * Water blasting
- * Gardening
- * Chain sawing
- * Repairs
- * Demolition
- * Any farm work

Fair hourly rate. Honest and hard working.

Local references available.

Please enquire to Jeremy Ellis:
(03) 522 4460 or 0276697744

COME TO A TALKING CAFÉ

Connect with your community



Talking Cafés are an opportunity to meet people, make new friends and find out more about activities, services and support in your community.

Pop in for a quick cuppa, or stay for a longer chat.
All are welcome, no bookings required.

Your local Tapawera Wellby café
Every 2nd Tuesday of the month,
St. Peter's Anglican Church, 10-11.30am
(NOTE VENUE CHANGE)

Next Cafes: Tuesday, 14 April
Tuesday, 12 May

wellby

For more details:
wellby.org.nz
or phone (03) 546 7681





Tapawera Area School

Kia ora, Moghrey Mie,

Summer may be over but hopefully not all the good weather.

TOSI is upon us in week 8 and the whole school and community have been absolutely amazing in your support of this event. Our students are practicing twice a day, every day, taking part in various mini tournaments and practice games to be at our absolute best for the start of the competition on March 23rd.

We start the whole TOSI off with a mihi whakatau to welcome our guests and opponents at 9am. We have performances from every school and our local MP and Mayor to open the event. It would be awesome to see as many members of our community there as well. This will be on the tennis courts or in the gym if the weather is not playing ball. From there, we are straight into it with sports and events kicking off at 10am.

I will enclose a timetable for the whole week within this newsletter and it would be wonderful to see you at school and the surrounding venues to support our school and of course our opponents. A huge thankyou to all those who have managed to help us out in some way with billeting, sponsorship, providing some kai/food for our guests and generally helping out in some shape or form throughout the week.

Our Senior students in Year 11-13 took part in a Health and Safety course last week for 2 days and will get their results soon on an 18 Level 3 credit opportunity in NCEA. Coming up is a further opportunity for students to become qualified baristas and gain another 12 Level 2 NCEA credits. All these opportunities are real life skills that will hold in good stead as students potentially grow up, leave Tapawera (before coming back!) and provide great employment skills.

Swimming sports was very well attended at both ends of the school and some very good performances with Jaxson Searles breaking a 30 year school record—well done Jaxson! It was great to see our senior students helping support and organize the primary swimming event—what a community.

Three Way Conferences took place on Monday with a very good turnout, as always in the Primary area but it was great to see an almost 80% turnout in the Year 9-13 area also. Some very immediate feedback from our seniors was they felt it was very helpful to have a genuine 3 Way Conference, with their voices key to setting goals as they move forwards. I am delighted how these new changes were taken on board by students, parents and staff. The more links between these three groups the better chance of greater success and progress. If you have any feedback about the day, I would love to receive it please?

As we approach the end of term, which has come round so

quickly with it only being a nine week term, I am able to reflect on some huge changes here at our kura. The Senior curriculum has widened considerably with the introduction of Trades Academy for Year 11 students, Building and Construction (BCAT'S) becoming a new NCEA course for year 11-13, Drama being taught up to Level 3 NCEA and multiple real life, authentic opportunities added into the curriculum. We have also applied to the Tertiary Education Commission for 5 more additional Gateway places to allow Senior students to experience real life work placements as part of their course, to gain a taste of an industry before deciding if that is the pathway they wish to follow.

We are currently also looking at further developing our maths curriculum within the upper Primary area and introducing opportunities, where agreed upon by staff, students and parents for external CAA exams in Year 9 and 10. Horticulture is being extended into the Primary and Secondary school with greater provision in our school garden area.

We have purchased 50 new computers/chromebooks to provide one to one provision in Year 4 to 13, thereby extending engagement, opportunity and achievement throughout the school and bringing our kura up to date with our fellow schools, able to access google classroom at all times and also begin to complete our usual national testing online rather than on paper.

I have loved getting to know Gina and the Kindergarten staff and students, Playcentre connection is next on my agenda and we have a large number of new students joining us from the kindergarten in the next 3 terms.

I have also been working with the Ministry of Education to potentially gain additional funding for our school to begin to plan for some major property updates and new curriculum areas within the school, including Hospitality, Science and Technology. I am pleased to say that the Tapawera Connect group is also working alongside the school to try to provide greater access to our school pool area in the summer holidays and improve its surroundings.

By the time you receive this newsletter on Friday our new basketball and two netball courts should be completely remarked and ready for use by all.

Our Board of Trustees and our staff continue to work very hard for all of our students to provide all of these opportunities for them and the wider community.

Finally, for this newsletter, again thank you so much for your continued support as we embed all these new initiatives for the good of the students and community.

Andy Ashworth
Principal



ATHLETIC SCHOOL RECORDS BROKEN

Congratulations to these students who broke school records at the recent Athletics Event.
Levi Davis 800metres Time 2m 29s
Breeze Streeter-Mantell 100 metres sprint Time 13.12 sec
and 200 metres sprint Time 27.34 sec
Hunter Page 3,000 metres Time 10m 45s



Swimming Sports Wow! Senior Swimmer Success! to all of these tamariki. **A special mention to Jaxson** (far right) for breaking a school record that had stood for over 30 years! He smashed the 25 metre freestyle in an incredible time of 16.63 seconds. The previous record was set by Jake Hogg in 1995 — what an amazing achievement! Ka rawe, Jaxson — we are so proud of you!



THANK YOU

A massive thank you to **MTF Finance** and **GOLDPINE** for coming on board as sponsors for this year's TOSI (Top of the South Island) Tournament, hosted right here at Tapawera Area School, 22nd-27th of March.

BinGo Bins
DRUM & WHEELIE BIN HIRE

Craig Fry "Cracker"
Owner/ Operator

027 761 0240
bingoriwaka@gmail.com



TOSI Tournament Team Congratulations to our Top of the South TOSI team for 2026!
Back: Tegan, Joseph, Hunter, Tamati, Tyler, Roman, Harry, Oliver, Logan, Levi, Izak, Steve
Front: Breeze, Shimiela, Kiana, Shakaia, Mela, Keetah, Alyse, Jada, Paige, Maddyson.

VAS the Magician Visits Our School!

We had a very exciting visit from **VAS the Magician**, who amazed our students with his fantastic magic tricks. Cards appeared out of nowhere, colourful scarves magically changed, and there were plenty of laughs and surprises along the way. The children were captivated and loved being part of the show. But it wasn't just about magic! VAS also shared an important message about **healthy eating**. Through his tricks and fun demonstrations, he showed the students how choosing healthy foods like fruit and vegetables can help our bodies grow strong and give us energy for learning, playing, and sports. Some lucky students even helped VAS on stage and became part of the magic themselves. It was wonderful to see so many smiling faces and excited learners. A big thank you to **VAS the Magician** for bringing magic, laughter, and an important reminder about making healthy food choices. It was a magical learning experience for everyone.





Letters to the Editor

Dear Editor,

Recently we received a Tapawera Connect (TC) flyer in our mail. Thank you Tapawera Connect. You explained a lot about who you are and what you do, which is helpful. What wasn't covered in your flyer though, is your relationship with the governing body for the Tapawera District – Tapawera and Districts Community Council. (TDCC)

It would be helpful for people to understand that relationship, if Tapawera Connect in conjunction with TDCC could meet together and offer a joint statement re- their relationship, as the TDCC has been in existence for quite some time. TDCC has been responsible for community led development over the years, that has supported the construction of buildings, facilities, clubs, and services in the Tapawera District, as well as representations to Council for and on behalf of their constituents, in all areas relative to rural life – water, roads, rivers, sewerage etc..

Tapawera District Community Council's role is integral to the cohesion of the community as they are officially answerable to the Tapawera community. The committee members are volunteers who give of their time sacrificially. They must act in a neutral and unbiased manner, following the constitution, with the present and future care of the community in mind. They have a duty to get things right for the entire community. Quite a task, as obviously there will always be points of disagreement. They might not get it right in everyone's eyes all the time, but we believe they need all the support we as individuals can give them, because of the difficult and challenging task before them.

We hope people can see and understand the bigger picture of what makes Tapawera tick. It is the people themselves. Honesty, integrity and open discussion in relationships are key to seeing community spirit restored. A community can self-destruct when it disrespects these values. We feel our new TDCC committee is doing a sterling job in this area, given the issues they've had to contend with in their first month on the job.

At the end of the day the community's voice will always be seen in the unspoken, un-recompensed acts of love and kindness that people carry out for one another every day. We have experienced this from people in the Tapawera community and are extremely grateful.

Ian & Karilyn Breed - Kohatu

Dear Editor

What a wonderful event we had in Shedwood Hall for International Women's Day! Great to see so many of us there and have the privilege of hearing the personal stories of the two speakers.

We were all very much moved by the trauma faced by Wendy Strawbridge when she recounted her ordeal of the attempt to murder her as a nurse, and her long journey back from serious physical injuries, the mental anguish and the cards that were stacked against her by the judicial and health system. But what was so inspiring was that she made it into a catalyst for change; spending years and huge effort to change New Zealand policy and law in respect of victim crime in the case of mental insanity, and remarkably go back into the nursing profession.

A huge thanks to Tapawera Connect, to Della Webby in particular, for organising the event and to the Friends of the school for doing the catering and the other supporters. It's been my favourite day of the year for the last 30 years or more since I worked for a women's organisation in Africa. So it was lovely this year to catch up with Tapawera friends up the valleys, witness new and stronger connections made, and see women supporting and empowering other women.

Jo Leyland

Letters to the Editor – Submission Guidelines

TDCC welcomes your thoughts, opinions and feedback. To ensure respectful, constructive and relevant discussion, please follow these guidelines when submitting a Letter to the Editor:

- Keep your letter under 400 words.
- Be respectful and civil, even when expressing disagreement. No hate speech, defamation or misinformation.
- Include your name and contact details.
- Email letters to tapaweraformer@gmail.com by the 20th of the month.

Letters may be edited for length, clarity, or grammar, and may be referred for comment before publication. We reserve the right to decline letters that contain personal attacks, hate speech, discriminatory language or misinformation.

Letters are the opinion of the author and do not reflect the opinion of the TDCC or the Informer.

Book Discussion Group

Meet: 4th Thursday in month, 10am
 Contact: Adrienne Baigent 021408892

Federated Farmers

Contact: Harry Matthews - Field Rep -
 0275078901

Golden Bush Garden Club

Meet: 2nd Thursday of month
 Contact: President, Linda Milsom
 02102510945, or Shirley Percy 5224924

Golf

Meet: every Sunday, Ladies 9 hole
 every Tuesday
 Contact: Gary Oldham ph. 0278080578

Historical Society

Contact: Barbara Carleton ph. 5224317

Informer

PO Box 15 Tapawera
 Email tapawerainformergmail.com

Justice of The Peace

Peter Phillips ph. 5224313
 John Ellis ph. 021 522429
 Brent Hodgkinson ph. 5224381
 Susan Fenemor ph. 0275224009 (text
 during school hours)

MENZSHED

Contact: John Wilmshurst ph. 5224616

Netball

Contact: Susan Fenemor ph.
 0275224009 (text during school hours)

Ramblers

Meet: each month
 Contact: Shirley Percy ph. 5224924

Shedwood Hall bookings

Contact: Tania Higgins ph. 5224587

St Andrews Church Stanley Brook

Services every Sunday. Cup of tea
 afterwards.
 Contact: Lee Winter ph. 5224160

St John – Tapawera

For emergencies Dial 111,
 Email info@stjohn.org.nz

Tapawera & Dist. Community Church

St. Peter's Tapawera: no services at
 present
 Contact: Church office 03 541 8883
wakefieldanglican.xtra.co.nz
 Urgent enquiries to Andrea 0024169386

Tapawera Food Bank

Contact: Suzzi Lankshear ph.
 0277491063

Tapawera & Dist. Community Council

Meetings: 3rd Tuesday of month,
 7pm Tapawera Community Centre,
 email: TapaweraTDCC@gmail.com

Tapawera Community Centre

Email: tapaweratdccc@gmail.com

Tapawera Connect

Contact: Rachel Moffit ph. 027 460
 8728, email:
opsmanager@tapconnect.onmicrosoft.com

Tapawera Creative Fibre

Meet: every Wednesdays, 10am-2pm,
 Memorial Hall
 Contact: Catherine Hesketh ph. 027 522
 4266

Tapawera Jujutsu Club

Contact: Tony Hammersley ph. 5224609

Tapawera Op Shop

Currently closed

Tapawera Playcentre

Meet: Mon & Thur, 10am -12:30pm
 Memorial Hall ph. 5224456

Tapawera Rugby Football Club

Bookings: ph. Judy Benjamin 5224445

Tapawera Sport & Recreation Society

Contact: Judy Benjamin ph. 5224445

Tapawera Volunteer Fire Brigade

Contact: Dean Millar Chief ph.
 0279651399; Ted Oakly Deputy Chief
 ph. 0210704033

TAS / Community Library

Mon-Fri 10:30am-1:30pm. Contact: Kelly
 Library ph. 5224337/ext. 213

TESSI

Contact: Bruce Whyte ph. 5224550

Visual Arts Society Tapawera

Contact: Dallas Robinson ph. 5224984

Yoga with Josie

Wednesdays 6-7pm school music room
 (school term only).
 Contact: Josie Orr: 027 612 5813

Wakefield Police

Constable Jamie White –
jamie.white2@police.govt.nz
 Constable Matthew Berquist –
matthew.berquist@police.govt.nz
 Non Urgent (CRL) – Call 105
 Happening Now – Call 111

**What's on
April**

- 9 Garden Club, 11am,
Willowbank
- 14 Tapawera Talking Café, 10-
11:30am, St Peter's Church
- 14 Digi Drop-in Session, School/
Community Library, 11am-1pm
- 20 Articles for Informer close 5pm
- 21 TDCC monthly meeting, Rugby
Club rooms, 7pm
- 25 ANZAC Day Parade, Memorial
Gates, 9am
- 26 Craft and Market Day, Village
Green, 10am-2pm
- 28 Tea and Talk, St Peter's
Church, 10:00am - 11:30am
- 28 Bible study, St James Church,
797 Tadmor Valley Road, 6pm
- 30 Wellbeing Workshop, Wakefield
Health Centre, 5:30pm

**GP & Nurse at
Tapawera Clinic**

(during school term time):

GP clinics – Mondays
 9am – 12 midday

Nurse clinic – alternate
 Tuesday mornings - phone
 541 8911 for dates