

Community Hub Consultation Opportunity

Here's where you can have your say on Tapawera's new hub and its location.

It takes about 3 minutes to complete. Please don't hesitate to ask any questions, pm Tapawera Connect, or text or call Phoebe on 0212116730 or 5224929 or contact any of the Tapawera Connect team members who are all too happy to answer your questions or hear your concerns.

If you don't have internet, or access to a computer, give us a buzz and we will meet you with one of ours and help you through the process. All your voices matter!

Go to:

<https://submissions.tasman.govt.nz/my-council/public-consultation/submission/new/1338/Draft-Lakes-Murchison-Ward-RMP-and-RMP-section-on-Baigents-Bush>

Submissions close on the 16th of June

Click on 'Start Submission' at the bottom of the page:

Start submission

Page 2: Fill in your personal details

Page 3: Answer the feedback questions (you can leave any blank you don't want to answer). Questions 2, 2a, and 2b all relate to the Tapawera Hub.

Here you will be able to select your preferred location.

Due to community opposition and constraints on the site such as the size and parking space, the council are no longer considering the existing Community Centre site as an option.

- ☐ Option 1: near the shearing stand.
- ☐ Option 2: on ex-Railway land between Matai Crescent and the existing rugby clubrooms
- ☐ Option 3: on ex-Railway land north of Matai Crescent.

(Option 3 is behind the 4 Square)

Page 4: You can upload a letter here if you want to write more

Page 5: Check your details, and submit 😊

COME TO A TALKING CAFÉ

Connect with your community



Talking Cafés are an opportunity to meet people, make new connections and learn more about your community.

Pop in for a quick cuppa, or stay for a longer conversation with friendly people. All welcome, no bookings required.

Upcoming Tapawera Talking Cafés
Tapawera School Community Library

Tuesday 13th May, 10.00-11.30am

Tuesday 10th June, 10.00-11.30am

Tuesday 8th July, 10.00-11.30am

For more details:
wellby.org.nz
or phone (03) 546 7681

wellby

HANDYMAN

- * General property maintenance
- * Clean out/tidy up
- * Water blasting
- * Gardening
- * Chain sawing
- * Repairs
- * Demolition
- * Any farm work

Fair hourly rate. Honest and hard working.

Local references available.

Please enquire to Jeremy Ellis (03) 522 4460

RURAL POST, RD 2 Wakefield

Contact Nick & Jackie Costley for all your RD 2 Wakefield postal needs.

Including prepaid envelopes, stamps, courier items and local freight from Wakefield, Dovedale and Tapawera. Prescriptions from Wakefield.

Phone 0275418581

Mark & Tania Gill
T/A MTJ Transport
RD2, Nelson
NZ Post Rural Contractors
Servicing
Motupiko-Korere-Kikiwa-Tophouse-St Arnaud-Glenhope

For all your Postage, Milk & Courier Freight
Operating 3 Days Weekly
(Monday-Wednesday-Friday)
Departing Nelson 8.00am
Phone 546 6295

Material & adverts for Informer

All material is to be sent to either:

Informer, PO Box 15, Tapawera, 7055
or email- tapawerainformergmail.com

To be received by 5pm
20th of the Month

If emailing a word document please send in Word as an attachment.

If sending an advert please save as a jpeg before sending.

Please check your emails to see your article/advert has been received as sometimes there needs to be alterations.

Advertising rates for Informer

Standard ad	Pay monthly	Pay annually
1/4 page advert	\$39	\$343
1/2 page advert	\$54	\$475
Full page advert	\$78	\$686

Adverts that require editing may cost extra

The Informer is produced and published by the Tapawera and Districts Community Council, PO Box 15, Tapawera, 7055;
email: tapawerainformergmail.com
Circulation 635
Editor: Gill Hammersley
The Editor and Publisher try to ensure information published is truthful

and accurate, but do not accept any responsibility for errors or omissions, or for any consequences of readers' relying on the information published. Opinions expressed by contributors may or may not be endorsed by the Editor or Publisher.
All material submitted, whether editorial or advertising, is accepted at the discretion of the Editor and the Publisher.

Tapawera & Districts Community Council Special General Meeting Tuesday 20 May at 7.00 pm in the Tapawera Community Centre

TDCC has operated as an incorporated society until now under the Incorporated Societies Act of 1908 (ISA1908).

The government introduced a new Incorporated Societies Act which took effect from 2022 (ISA2022).

Existing incorporated societies have until April 2026 to comply with this new ISA2022 legislation and until April 2026 they continue to operate under ISA1908.

Compliance with ISA2022 requires the TDCC to submit a revised constitution. Before submission this revised constitution needs to be ratified - this Special General Meeting on 20 May has a single agenda item 'Ratification of revised TDCC constitution'. All residents within the broader Tapawera community are invited to attend this SGM.

We plan to have the revised constitution available for public viewing on the Tapawera Community website (on the TDCC page) from 13 May. We will also post a notice on our Facebook Tapawera Community News page with a link to the document.

While the new ISA2022 legislation requires many changes to our existing constitution, most are procedural and straight forward to implement.

One significant change is that each member of the TDCC must actively consent to be a member and the TDCC must maintain a register of current members. Currently our members are defined by where they live and there is no membership application process - if they reside within our geographic catchment they are considered members. This new requirement means we need to implement a membership registration system.

We intend using this online form for membership applications which I have set up only as a trial at this stage for people to see how it would work, you are welcome to complete the form and submit however this is only a trial at this stage and no membership data will be collected:

<https://www.cognitoforms.com/TapaweraDistrictsCommunityCouncil/TrialTDCCMembershipApplication>

Steve Udy

TDCC Chair



Tapawera Community Transport Pilot

9 April 2024 to 17 April 2025

The six seater Serena bus, purchased by the Nelson Tasman Community Transport Trust (NTCTT), was reassigned to Tapawera for a community transport pilot service that commenced 9 April 2024.

Following research done in Tapawera by the NTCTT, it was agreed to have a weekly passenger service to Richmond on Tuesdays to coincide with pension day and on Wednesdays to Motueka. The service left the Tapawera Community Centre at 9:30am and departed Richmond/ Motueka at 2pm. The service to Motueka was, after community consultation, changed to a Thursday service departing Tapawera Community Centre at 9:30am and returning from Motueka at 1pm from 1 December 2024. It was also agreed to trial cash fares from 1 December 2024 through to 9 March 2025.

The Serena vehicle (based in Tapawera) was also available for community hire. An example of this was the Nelson return trips for social outings to festivals, with six people this cost \$60 return i.e. \$10 per person. The vehicle (located in Tapawera) is still available for group hire until the Trust has made a decision on where it will be redeployed.

We would like to thank members of the Tapawera community that used the transport services. Unfortunately, the patronage has been mostly just one or two passengers per trip and sometimes no bookings at all.

The Tapawera Community Transport Pilot has now completed a full 12 months and we will be bringing it to a close with our last service to Motueka on Thursday 17 April 2025.

The NTCTT would like to thank the Motueka isite for handling the bookings with our customers on these Tapawera services.

Whilst this volunteer driver passenger weekly bus service hasn't proved popular enough to retain, transport to town for some of our local residents is lacking. The Trust hopes that there is scope to use our local existing resources and vehicles to share rides and reduce both financial and carbon emission costs. The NTCTT will be getting behind a new campaign launch to support shared transport (rideshare) in July 2025.

We would also like to acknowledge the huge community contribution our volunteer drivers have made over the course of the year. We have really appreciated all of the support, positive energy and of course safe driving you have done on behalf of NTCTT and for the community. Ngā mihi nui. Jude

Tapawera Community Craft and Market Day

Last Sunday of the month



Across the road from 4 Square
on the village green, 10am to 2pm.

Bring along your crafts/produce
/unwanted items to sell.



Enquiries to Amanda Beer on FB messenger or via the Tapawera and Surrounding Valleys FB page.



"...for all creatures great & small..."

**Regular Tapawera visits
discounted mileage
T&Cs apply**

Ph 544 1200

info@tcvet.co.nz * www.tcvet.co.nz

**25 Edward Street, Wakefield
35 McGlashen Avenue, Richmond**



24 hour emergency vet



**Tasman Bay
Chiropractic**

Keeping you in the game since 2002

**Referrals, families and
all new clients welcome**

Visit our website or call for more information



03 544 4554 Monday-Saturday

tasmanbaychiropractic.co.nz

Find us on  

Stanley Brook Annual Giant Pumpkin Competition

Despite a steady drizzle and grey skies, the annual Stanley Brook Giant Pumpkin Competition went ahead as planned this month. Locals turned up with gumboots and umbrellas in hand to weigh in their pumpkins and enjoy a relaxed day of community fun.



This year's competition took an unexpected turn, with pumpkins arriving noticeably smaller than usual — some barely half the size of previous years' entries.

A good number of locals still turned up, wheelbarrowing and tractoring in their pumpkins and sharing a few laughs about the season's growing challenges. Whether it was not enough rain, not enough sun, or something in the soil, no one could quite say — but one thing was clear: it wasn't a year for record-breakers.

Even so, the spirit of the event stayed strong. The community hall offered a warm, dry space for cups of tea, homemade baking and catching up with friends.

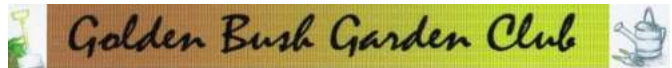


To keep the day lively, plenty of spot prizes were handed out — even a few surprise awards were given for enthusiastic effort. It kept the mood light and brought a few

unexpected winners into the spotlight. Many thanks for the prizes goes to: The 4 Square, Molly's Coffee, Kainga Kai, Massage by Josie, Riding lesson by Sabine and Farmshop @185.

Though the pumpkins may have been small, the turnout was hearty, and the event still brought the community together — muddy boots, soggy sleeves and all.

Here's hoping for a bigger harvest next year!



For our April get together we had the chance to visit six lovely gardens courtesy of the Waimea Garden Club. The properties were from Wakefield to Brightwater, then on to Appleby and back to Brightwater. A delicious morning tea was provided for us and we also had the chance to purchase a variety of plants at very reasonable cost from several of the locations. There was a good turnout on a sunny autumn day which was enjoyed by all, being a good chance to get lots of new ideas. One of the highlights of the tour was a large shed with historical horse drawn vehicles and paraphernalia.

Next meeting is Thursday, May 8th at the later starting time of 11.30am. It is at Patricia Robinson's Riwaka River Estate, 60 Takaka Hill Highway on the right just past the Marahau turn off. There is plenty of parking. Bring lunch, cup and chair. There will be an auction and raffle.

With the wetter weather arriving the garden is certainly brightening up. This year near the house I have planted quite a few different coloured geraniums and they have certainly rewarded me with a long lasting display of colour for months on end. They can be easy to propagate as well. The roses are giving their final showing and I'm looking forward to the first of the bulbs and Hellebores in the months ahead.

Happy Gardening.

Shirley



WADSWORTH MOTORS LTD.

- Coach Charters & Tours
- Mini Bus Hire.
- School Transport
- Professional friendly drivers
- Members of the Bus & Coach Association

Over 100
Years of
Service

wadsworthmotors@extra.co.nz
100 Main Rd, Tapawera
www.wadsworthmotors.co.nz

027 4873167



All Accounts Matter LTD

For all your accounting and tax needs!

If you are looking for a new Accountant, now is the perfect time! I would love to find out about your business and have a no obligation chat about how I can help you. So don't wait, call me now!

Sonia Emerson Chartered Accountant

GST | Tax Returns | Payroll | Bookkeeping | Cashflow Forecasting
Management Reporting | Rental Statements | Farm Accounts



ACCOUNTING SOFTWARE

myob

2020/2021
Certified
Consultant



M: 021 221 1009 | P: 03 541 9005 | sonia@allaccounts.co.nz
367 Wakefield-Kohatu Highway, RD1, Wakefield 7095

www.allaccounts.co.nz



Servicing Tapawera, Kohatu,
Tadmor, Motueka Valley and
surrounding areas daily

"If its urgent, we'll be there!"

Plumbing – Gasfitting – Drainage
Blocked Drains – Leaky taps
Spouting- Hot water - Wastewater
system servicing

Phone, email or Facebook Messenger
us to book your Job or Free Quote

Phone - 03 543 8090

Email - info@tuffnell.co.nz

*"We thank all our clients for their
continued support"*



Tapawera Community Connection Update

Do you want to connect to others in our community? Read on for information on what's been happening in our town and more fun ways to get involved.

Workshops

I would like to thank Heather Spence who donated a huge amount of her time and energy to provide a preserving workshop in April, where participants learnt how to make jam, mint apple chutney and red pepper sauce. We all got to take home some jars of preserves too!! This fits with our community plan of becoming more food resilient. I now have the confidence to make my own jam and look forward to giving it another go next season.



Talking about workshops, Tapawera Connect would love to support more workshops for our local community. **If anyone has any workshop ideas they would be keen to see offered, let me know.** They can be anything from basic car maintenance, driving an ATV to soap or candle making. Please send me your thoughts!

Parent Support

Tapawera Connect is pleased to be able to support Abby Fenemor & Lissie Anglesey in restarting the Rural Mums Group. This is open to all mums, dads and caregivers and will run once a month on a weekday and once a month on a weekend day. There will be some extra special events

included throughout the year. Days are still being finalised but if you would like any further information or to join the 'Rural Mums' FB group, please contact Abby on 027 902 7202.

We are also in early planning for a drop in centre and workshops to support parents, so watch this space!

Trapping

Den O'Brien has kindly come forward to be the Tapawera backyard trapping coordinator. Den will help to get rat traps out into the community spaces and local backyards and record catches. This initiative is funded by Predator Free NZ and supported by the Motueka Catchment Collective and Fish and Game. It will help rid our town of rodents, protect our native birds and improve food resilience. Please contact Den on 027 522 4106 to **get a free rat trap for your backyard.**



Tapawera Spring Show

Tapawera is in the early planning stage for a Spring Show to be held in the school grounds on 11 October 2025. This show will be similar to our previously loved BGAC show and include music, entertainment, stalls, food, displays, animals, competitions and games. Low cost fun for the families We are hoping that all our local community groups will be involved in some way, as it is a great opportunity to show the community what you offer and maybe do some fundraising too! For more information contact Sabine on 021 0278 8260 or flick me a message.

Fruit Trees and Food Supply Volunteers

Do you have a passion for gardening or supporting food resilience in our community? We are looking for a Fruit Tree coordinator to help with the planting, maintenance and harvesting programme for our community fruit trees. We would also love someone to come on board to support our School and Community Gardens with harvests.

If you are interested in either of these very rewarding roles, please call or send me a message.

Della Webby, CLDP Community Connector

Della.webby@gmail.com, 027 479 4420

TAPAWERA ELECTRICAL

Tony Stephens

Registered Electrician

Ph/fax 5224257

0276249489

Renae 0275616510

All electrical needs

Domestic & Rural

Wiring, faults, some home appliance repairs

New heat pump installations

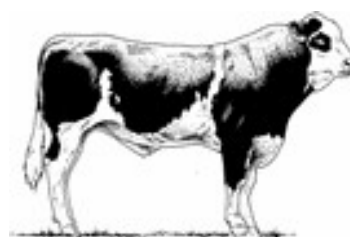


Free Quotes
Competitively priced

Gillespie—1

MAF approved

Home kill butchery



03 547 7746

Butcher / journeyman

Specializing in quality small goods

Factory: 111 Bolt Rd, Nelson

The Lady Tradie



Has your husband got a round



Spring has sprung

and the grass has riz !

Do you wonder where a handyman is ?

Can't get one ?

Then call " Jen the Lady Tradie "

for all your outside spring clean-up jobs

* Gutters full of leaves;

* Lawns that are starting to bolt;

* Waterblasting those slippery paths

and all that spring growth that just might get away on you.

* **Local Person** * **Referees Available** *

Consideration & discount shown towards Senior Citizens

FREE QUOTES

Contact Jennifer

Phone or text: 027 544 2663

After hours/leave a message: 03 522 4453

Email enquiries to: jentheladytradie@gmail.com

RELAXATION / DEEP TISSUE

1 hour Massage	\$99
1.5 hours Massage	\$139

PACKAGES (SAVE 10%)

3 x 1 hour Massage	\$267
3 x 1.5 hour Massage	\$375

CONTACT SAMMY TO BOOK:

Ph/Text or send us a message on Instagram or Facebook

96 Main Road Tapawera

027 5224189
[@glowholisticmassage](https://www.instagram.com/glowholisticmassage)

Relax & Revive



Tapawera Community Connection Update cont.

Community Hub Fundraising

Thank you to everyone who bought a raffle ticket, or eight, in our recent Easter Raffle, with all proceeds going into our new community hub fund. There were three amazing prizes with goodies donated from TDCC, Op Shop, Tapawera Auto, Molly Coffee, Kohatu Flat Rock and members of the community.

The raffle was drawn on Thursday the 17th April at the local foursquare by Kieri Williams, with David Moulder and Della Webby supervising.



The winning numbers were:

- 1: 65B Raewyn Cruttenden
- 2: 71F Glenda Webby
- 3: 56F Den O'Brien

All winners have been notified.



Senior's Snippets May 2025 with Janine Leeden, 0277525975

A woman on the phone to her friend: I feel like my body has gotten totally out of shape, so I got my doctor's permission to join the Tapawera Sit & Be Fit class and start exercising. I decided to join in last Friday. I bent, twisted, gyrated, jumped up and down, and perspired for an hour. But, by the time I got my leotards on, the class was over.

Sit and Be Fit will continue every **Friday morning at 10-11am** – **NO LEOTARDS REQUIRED**, (just come in comfortable clothes and shoes) - followed by a cuppa, chat and an opportunity to join in our current favourite board game, *Mexican Trains*, afterwards, which goes till about 12pm. We meet at St Peter's Church on the Main Road. Great value for \$3 for the morning. It's interesting to see how many of our mild-mannered Seniors suddenly display quite the feisty spirit when there's a bit of competition!

Our next **WELLBY TALKING CAFE** will be back at the School / Community Library on Tuesday, 13th May, 10-11.30am. A \$3 koha will help with morning tea costs. Kelly will be in the library to help you with membership and sorting any book requests you might have. See you there! The DIGI DROP-IN girls will be there from 11am-1pm, helping you sort out any tech issues you might be having.

Tea and Talk will be at the Memorial Hall on Tuesday, 27th May 2025, from 10-11.30am. \$3 covers morning tea and a great time of catching up. This month we have Naomi Johnson, Community Education Co-ordinator (Heart and Diabetes), a Dietitian and Team Lead on that subject at Nelson Bays Primary Health.

Some of us met Naomi as part of the fab 6 week Talking Walking programme run by the Wakefield Health Centre Health Coach, Ollie a couple of months ago. Naomi is coming to address some requested topics on diet and lifestyle changes that can be made when a 'pre-diabetes' diagnosis has been given by your GP, that may well prevent the need for medication or disease progression; as well as talking about portion control for over 60s who are no longer as active as we used to be while also cutting back on sugars and processed foods.





Some Winter FAQs – by Pip de Hamel

So winter has arrived and with it the usual range of winter infections. I thought I would try and cover some of the frequently asked questions about these 'bugs'.



1. When should I worry about a high temperature?

This is a good question, and behind that question is usually a concern that a child may have a febrile seizure if their temperature goes too high.

A fever is one of the body's ways of getting rid of germs. Unfortunately, we usually feel unwell with a high fever, and just occasionally a child can get a seizure. There is no particular temperature when a seizure happens. It seems that a seizure is more likely if the temperature goes up very quickly, and some people just seem to have a lower threshold for having seizures.

In general, we treat a fever if the sick person is unwell with it. If a child is younger than 3 months it is good to see the doctor if the fever is over 38. If a child is between 3 and 6 months it is good to see a doctor if the fever is over 39. However, how a child or adult is feeling and acting is more important than just the number on the thermometer, so if in doubt, come and see us at the Health Centre. Looking after a sick kid or adult can be scary and we would far rather check them out than have you worrying.

2. What is the best way to treat a fever?

In general we treat a fever if the sick person is unwell with it. A really good article for advice on treating a fever in children can be found at: <https://patient.info/health/feverhigh-temperature-in-children>

Taking fluids is really good for bringing a fever down and preventing dehydration.

If a child is younger than 6 months, Paracetamol is the safest medicine for a fever. Older than this Ibuprofen can be used but NOT if the person is dehydrated. For fevers that won't come down with just Paracetamol, it is fine to add in Ibuprofen as well.

3. What do I do about dehydration with tummy bugs?

This can be a problem when even a mouthful of fluid seems to bring on more vomiting! However some fluid does actually get absorbed so it is worth persisting. A useful guide is to give 1 ml of fluid for every kilogram of body weight every 5 minutes and keep this up for 2-4 hours. For

example if a baby is 10 kg, they would need 10 ml (2 tsp) of fluid every 5 minutes. Our nurses are a great source of advice in these situations.

4. When should antibiotics be used?

Briefly, most coughs and colds and flu-like illnesses are caused by viruses and antibiotics are not effective against viruses. They are effective for bacterial illnesses. You will have heard reports of looming antibiotic resistance and you may have heard about recent research on our microbiome, the mass of bacteria that live in our bodies and that have a huge effect on our health. Antibiotics can affect the balance of these bacteria in our body and that can have a negative effect on our health. So we try and use antibiotics wisely.

5. Why are there no drugs in the jungle?

Because the parrots eat - 'em- all (Paracetamol) !!!!!



'Monthly Motivation Quotation'

Brought to you by thelmahouse.nz
'Dream Coaching'

*"What you think, you become.
What you feel you attract.
What you dream you create."*



Tapawera Creative Fibre

Happy Easter. I hope the Easter Bunny has been kind to you all.

Creative Fibre members are busy with various projects of their own and are

looking forward to group projects coming up in the next few weeks.

First up we will be making log cabin quilt blocks, each member has two jelly rolls to construct their blocks these will then be put together to make quilts to be donated to Cancer House (Daffodil) in Christchurch. A lovely gesture from members of the group recognising the support of the staff and volunteers given to the people of our community who can have a lovely place to stay during their treatment regime.

Then we will hook into (literally) making rag rugs with Jo Martin. Many thanks to Vicky for facilitating this project.

Our on-going project is constructing and compiling a paper bag book. Many thanks to Cat for facilitating this challenge. These will be presented at the end of the year.

No matter if you spin, sew, knit, crochet, or cross stitch, you are very welcome to join us at the Memorial Hall 10am – 3pm each Wednesday, or at 10 Totara Street 7pm – 9pm on a Tuesday evening.



Tapawera Netball Club May News

We want to say a massive thank you to Belinda for organising the quiz and to the helpers Tania, Lissie and Susan and to everyone who attended our fundraising quiz! We hope you all had the best time! The results were:

- 1st - Kev's Birthday
- 2nd - Split Decision
- 3rd - Cheese Board
- 4th - Nothing Yet

Thank you to everyone who purchased raffles. The winners were Kate Clearwater, Andy Grice, Lee Leary and Baden Barker! Congratulations to our winners, we hope you enjoy all your new goodies!



Tapawera Blue Rock Hops Team

Thank you to our sponsors Blue Rock Hops Ltd for the support of both Glen & Sara and Brian & Sarah Clayton.

This team consists of Emma Bannister, Renee Macdonald, Kiahna Telfer-Eggers, Tegan Cornell, Mel Heine,

Shakaia Macdonald, Toni Derbyshire, Elise Cotter and Kelly Collins

Coach: Belinda Grice

Manager: TBC

Grade: 2

Training: Tuesday or Wednesday, 7 pm



Tapawera Fry Contracting Team

Thank you to Tapawera Fry Contracting, Kevin & Andrew Fry for sponsoring this team for a second year, we truly appreciate it!

This team consists of Aroha Collins, Kate Mytton, Shaye Leah, Lane Williams, Geinty Wells, Hayley Warren, Tameka Bennett, Karla Te Tau, Barbie Takimoana and Lissie Anglesey

Coach: Laura Fry

Manager: Shimiela Streeter-Mantell

Grade: 6

Training: Wednesday, 5:30 pm



Tapawera Four Square Team:

This is a team that has been together for a couple of years and last year just grew from strength to strength. Thanks to our new

sponsors Sharon and Murray Williams supporting us with your business Tapawera Four Square.

This team consists of Alyse Clarke, Paige Derbyshire, Keetah Jones, Atlanta Linstead, Kasey Mitchell, Breeze Streeter-Mantell, Ella Walker, Jaidyn Webb and Lydia Wedderburn.

Coach: Toni Derbyshire

Manager: TBC

Grade: Collegiate 10

Training: Wednesday 3:20 pm

Bushend Farms



This is a new team for us this year and we are excited to watch them grow as players and a team as they begin to learn how everyone plays and bonds together across a range of ages. Thanks to our new sponsors Phil & Jocelyn Riley for your support as Bushend Farms.

Coach: Rochelle Holloway

Manager: TBC

Grade: Collegiate 11

Training: Monday's and Wednesday's 3:20-4:30 pm

This team consists of Sarah Holloway, Maddy Pronk, Tasha Owen-Wright, Harmony Stretch, Brylee Biggelaar, Natalie Doig, Holly Bright and Leah Walker

We have a Tapawera Netball Club Facebook page where we will update you on how our teams do throughout the season. We also have a new email address so feel free to reach out to us at tapaweranetballclub1988@gmail.com at any time.

Lissie Anglesey

Club Secretary

Tapawera & Valleys Historical Society Inc

AGM

will be held on

Sunday 25th May

at 1.30pm

at the

Tapawera Community Centre



The Community Celebration was a great success!

A lovely evening was had by all who attended.

A huge thank you to Pestells for supplying the meat at a special discount, Menzshed for their support on the Barbeque, Nicola Allan for her beautiful arrangements and helping set up, and Higgins for the hall.



And a reminder, if you have an idea for a workshop you'd like to see happening in the community, Della would love to hear from you too.



'I thought Friday's event was great. Beautifully set out and a good community number to enjoy it. Well done for all the organising and time spent on it! A real treat. Hope to see the project posters again and congrats to all involved'.

The posters will be displayed on the wall of the Community Centre/Op Shop. Pop in for a read anytime. There's some great photos too!

A huge number of community projects were showcased on large posters with updates and information on how to get involved. If you're interested in any of the following, give Della a call or flick her an email: della.webby@gmail.com, 027 479 4420.

- Emergency Preparedness
- Spring Show
- School and Community Garden
- Seniors
- Youth
- Trapping
- Shedwood
- Community Transport
- Internet Connectivity
- Maniaroa Bike and Cycle paths
- Parent Support
- Op Shop
- Community Fruit tree planting
- Community Hub

Yoga with Josie - Tapawera

Wednesdays 6-7pm
 Tapawera School Music Room
 School Term Time Only
 Term 2: 30th April - 25th June
 N.B No class 4th June

All Abilities Welcome
 BYO Mat

\$12 per class or \$80 for the term
 (8 classes)
 50% discount for students

Contact Josie: 027 612 5813



From the Principal's Desk

Tēnā koutou e te Whānau ki te Kura o Tapawera

Over the past few weeks, we have experienced a distressing increase in vandalism on school grounds outside of school hours. This includes damage to playground equipment, graffiti on school buildings, and littering. These acts not only detract from the appearance of our school but also create unnecessary costs for our limited resources, funds that should be directed towards our students' education.

We understand that children and young people enjoy using our school grounds, and we encourage this within reasonable boundaries. However, it is becoming increasingly clear that unsupervised students are responsible for the recent damage.

It is crucial that we work together to protect our school and ensure it remains a safe and welcoming environment for everyone. Therefore, I am appealing to all parents and caregivers to:

Supervise your children: Please ensure that your children are supervised when they are on school grounds outside of school hours.

Reinforce respectful behaviour: Remind your children about the importance of respecting school property and the consequences of vandalism.

Report any suspicious activity: If you witness any acts of vandalism or suspicious behaviour on school grounds, please report it to the school or the police immediately.

Communicate with your children: Have open conversations with your children about the importance of respecting public property and the impact of their actions on the wider community.

We are a small, tight-knit community, and the actions of a few are impacting us all. We want our school to be a source of pride for everyone in Tapawera, and we can only achieve this with your cooperation.

We understand that not all children are involved in these acts of vandalism, but all parents must be aware of the importance of supervision.

We are currently working with the local police to increase patrols around the school during non-school hours. We are also exploring other options for increased security.

We appreciate your understanding and support in this matter. Together, we can ensure that Tapawera Area School remains a safe and respected environment for all our students.

Thank you for your ongoing support and Aroha for our Kura

Athletics

This year there was the usual positive feel about School Athletics day. This event covers the age range from 10 year olds to 18 year olds. In all age groups the Houses were well represented but a common trend occurred throughout the day. Motupiko House continued on from their dominance in

the Swimming pool to the Athletics Track and Field venue. If it was not on the track then the yellow flag was flying during the jumps and throws. At the end of the day Motupiko finished in first place ahead of Tadmor and then Baton in both their participation and performance.

Records were broken across the events on the track and field. Breeze Streeter Mantell broke the 200m record that had stood since 1991 held by Leah Morgan, breaking the record by 2 seconds. Breeze also set a new Triple Jump record of 10.04m for which she went on to become the Regional Champion a week later.

In the Jumps, Bronco MacDonald broke both the Long Jump which was a record held by the infamous Chris Brake, and the Triple Jump. Bronco's Long Jump beat Chris by 6cm to extend it to 5.67m, whilst the Triple Jump record was extended to 12.08m. He also saw success on the track producing a fine 200m of 26.01secs to take the record that had been held by Jacob Barclay since 2001.

It was a great day for many reasons. The highlight being the support that all participants were given for their first place efforts or just for the effort that many put into their performances. The cheers could be heard as the girls and then the boys competed in the relay races. Motupiko finished in first place in both, sealing the deal for the day.



Breeze Streeter Mantel and Bronco MacDonald



Regional Athletics

A group of students attended the regional event at Saxton across a number of events. On the track Levi Bennett competed in the 400m. The girls entered a 4 x 100m relay team and did well to finish third ahead of Marlborough girls. This team consisted of Alyse Clarke, Kiana Collins, Mela Jelinek and Breeze Streeter Mantell. Joseph Butcher competed well finishing 2nd in both the Discus and the Shot Put and has qualified to compete in the upcoming South Island competition.

In the Long and Triple Jump Tapawera has had a successful past winning at South Island and National level but this was back in 2009-2013. These athletes such as Chris Brake, Tess Haunch and Chloe Hall have not been matched in the time since. This year, Breeze and Bronco have brought us back to a similar standard with wins in both the Long Jump and Triple Jump. The exciting news was that the 12.08m Triple Jump by Bronco smashed the Regional record of 11.61m. It will be interesting to see how well Joseph, Breeze and Bronco get on at the South Islands at Saxton.

Leadership Forum

On April 1st our senior leaders attended a regional Leadership forum. This was an opportunity for our head students, house leaders and student reps to mingle with students across the region. They spent the day listening to key speakers on Leadership and "making a difference" and how to make a difference in their own schools by sharing ideas and creating achievable opportunities for students at Tapawera. This group consisted of Jada Jelinek adorned in badges on her smart blazer, James Snackers, Tamati Bright, Joseph Butcher and Izak Walker. This was a valuable experience for them talking to students from Waimea, Nayland, Motueka, Collingwood, Nelson Girls, Nelson College and Marlborough Girls. They may well have come away with ideas to do with sport, drama, talent quests or out in the community. Watch this space for their ideas when they start to emerge. Their mission is to set a realistic goal and take people with them to help realise the possible outcomes of "Making a difference".

Day Tramp to Hackett Hut

On Thursday last week the year 11 and 12 Outdoor Education students completed a day tramp to the Hackett Hut in the Aniseed Valley. We have been learning about what gear we need to be safe on trips as well as sensible nutrition choices. On the day we practiced our map reading skills and enjoyed an awesome day out in our beautiful countryside. Our next trip is week 2 of term 2, a multi-day tramp of Gordon's Pyramid in the Mount Arthur area.



Some of What's Been Happening in Social Science.

Our "Whenua" unit evolved into a study centred around "Our Whānau", for both Year 9 & 10. Within this unit, students explored their family genealogy through three key aspects: "All About Me," "All About My Family," and "All About My Ancestors." Notably, this project resulted in all students discovering new information about their families.

The Year 10 students have been learning to identify the locations of the local rivers, the mountains around us, studying the work of Paul Robinson, the carver of the school's dinosaur sculpture and learning about the history of the school chain, a relic from the Wahine Disaster.



In preparation for ANZAC Day, the Year 9 students have arranged the memorial crosses that the school acquired through TDCC funding in 2018 during the Armistice commemorations. These crosses represent the soldiers listed on all three local war memorials.





Room 7 students at Rabbit Island

A group of Room 7 students spent a day at Rabbit Island completing a variety of sustainability exercises, competing against teams from across the region. They learnt a lot and were able to explore their leadership skills at the same time!



Well done to everyone who participated, and Cyprus for winning a spot prize.



Thank You....

20 of our students travelled to South Westland for the Area Schools sports tournament.

Costs for a trip like this can be very high, but because of a generous donation from Friends of the School and the Tapawera Four Square these have been able to be reduced significantly for each of our students representing our school.

Thank you Friends of the School and Tapawera Four Square. Your support is greatly appreciated.

Our Tournament team travelled to South Westland Area School at Hari Hari to participate in the Top of the South Area Schools' Tournament. They competed in a large range of activities including touch rugby, volleyball, technology challenge, darts, basketball, football, art challenge, quiz, rugby, badminton, cooking challenge, wearable art, playball, bow hunters, netball, Ki-o-rahi and 22 shooting. Congratulations to our team for coming runners up to South Westland Area School after a great week of competition.

ORS fitness

ORS fitness looked a little bit different. Thankyou Todd for organizing and thankyou to Sylvia and our student teacher Cam for running this special session for our students. Every single one of them said they have never been in a kayak before. I think their faces say it all .

We only had two fall out, but even more cool they got back in and away they went.





Hello to all, my name is Abby Fenemor I'm going to be running the local Rural Mums Group in Tapawera along side Lissie. A little bit about me, I grew up in Brightwater and moved to Tapawera 2020. I'm married to Johnny, we have two children, Jack (3) and Henry (1). We live on my husbands sheep and beef farm, I am ECE trained and do some relieving at Tapawera Kindergarten.

I've been going to Mums group since Jack was born and I found it so beneficial for meeting like minded people, sharing stories and chats, learning about new things and it helped me through my motherhood journey.

I'm looking forward to running this group alongside Lissie, seeing familiar faces and meeting new people. We hope to provide a space for mums to discover, learn, feel a sense of community and belonging and be able to be part of something special. Abby ☺



Hi! I'm Lissie, I'm a mum of three busy boys – Cooper (7), Wyatt (4) and Harry (3) – so life is never dull! When I'm not wrangling kids, you'll usually find me out on the farm helping my husband on our sheep and beef farm, or tucked away at home working as 2IC at a marketing and website design firm. I'm super lucky to be able to work from home – often with muddy boots at the door and a redbull in hand!

I'm really looking forward to spending time with all of you amazing mums – whether you're pregnant, have little ones, older kids, or just feel like hanging out with some fellow mums who get it. We'd love to see you there for some good chats, laughs and connection.



Mothers Day Giveaway!

Rural Mums Group Tapawara is doing a giveaway to celebrate our Mothers in the community!

Prizes include ✨

Lots of beauty products, perfume, slippers, heart wall art, lip balm, nail file, bath gloves, lollies and Molly's coffee voucher ✨

How to enter:

🌸 Comment on this post your favourite memory of Motherhood so far...

🌸 Join the Rural Mum's Tapawera group page on Facebook (the Facebook page, not the chat)

🌸 Bonus entry if you tag a friend

We will be checking you have completed the 2 steps. There is one prize to be won. Giveaway will be drawn 11th May 2025 and winner will be notified on this post. Good luck!

This giveaway is not associated with Facebook. Warning just incase... be aware of scam/fake pages. Rural Mums would never ask for credit card details or use other scam tactics such as links to claim your prize.



Book Discussion Group

Meet: 4th Thursday in month, 10am
Contact: Adrienne Baigent 021408892

Federated Farmers

Contact: Harry Matthews - Field Rep -
0275078901

Golden Bush Garden Club

Meet: 2nd Thursday of month
Contact: President, Linda Milson
02102510945, or Shirley Percy 5224924

Golf

Meet: every Sunday, Ladies 9 hole
every Tuesday
Contact: Gary Oldham ph. 0278080578

Historical Society

Contact: Barbara Carleton ph. 5224317

Informer

PO Box 15 Tapawera
Email tapawerainformers@gmail.com

Justice of The Peace

Peter Phillips ph. 5224313
John Ellis ph. 021 522429
Brent Hodgkinson ph. 5224381
Susan Fenemor ph. 0275224009 (text
during school hours)

MENZSHED

Contact: John Wilmshurst ph. 5224616

Netball

Contact: Susan Fenemor ph.
0275224009 (text during school hours)

Ramblers

Meet: each month
Contact: Shirley Percy ph. 5224924

Shedwood Hall bookings

Contact: Tania Higgins ph. 5224587

St Andrews Church Stanley Brook

Services every Sunday. Cup of tea
afterwards.
Contact: Lee Winter ph. 5224160

St John – Tapawera

For emergencies Dial 111,
Email info@stjohn.org.nz

Tapawera & Dist. Community Church

St. Peter's Tapawera: no services at
present
Contact: Church office 03 541 8883
wakefieldanglican.xtra.co.nz
Urgent enquiries to Andrea 0024169386

Tapawera Food Bank

Contact: Suzzi Lankshear ph.
0277491063

Tapawera & Dist. Community Council

Meetings: 3rd Tuesday of month,
7pm Tapawera Community Centre,
email: TapaweraTDCC@gmail.com

Tapawera Community Centre

Email: Nicola Allan
nicolaallan434@gmail.com or
TapaweraTDCC@gmail.com

Tapawera Connect

Contact: Phoebe Quinlivan ph. 021 211
6730 or 522 4929, email:
tapaweraconnect@gmail.com

Tapawera Creative Fibre

Meet: every Wednesdays, 10am-2pm,
Memorial Hall
Contact: Dallas Robinson ph. 5224984

Tapawera Jujutsu Club

Contact: Tony Hammersley ph. 5224609

Tapawera Music/Country Music Club

Meet: Alternate Sundays, Tapawera
Hotel 7:30pm
Contact: Elaine Douglas ph. 5418612

Tapawera Op Shop

Open: Tue 11am-2pm, Wed 10am-2pm,
Sat 11am-2pm, last Sun of month 10am-
2pm
Contact: Amanda Beer ph. 0278024612

Tapawera Playcentre

Meet: Mon & Thur, 10am -12:30pm
Memorial Hall ph. 5224456

Tapawera Rugby Football Club

Bookings: ph. Judy Benjamin 5224445

Tapawera Sport & Recreation Society

Contact: Judy Benjamin ph. 5224445

Tapawera Volunteer Fire Brigade

Contact: Dean Millar Chief ph.
0279651399; Ted Oakly Deputy Chief
ph. 0210704033

TAS / Community Library

Mon-Fri 10:30am-1:30pm. Contact: Kelly
Library ph. 5224337/ext. 213

TESSI

Contact: Bruce Whyte ph. 5224550

Toy Library

Open Monday or via arrangement:10:30
-11:30am contact Jan Barker:
0273915424 or 5224102

Visual Arts Society Tapawera

Contact: Dallas Robinson ph. 5224984

Yoga with Josie

Wednesdays 6-7pm school music room
(school term only).
Contact: Josie Orr: 027 612 5813

**What's on
May**

- 8 Garden Club, 11:30am, 60
Takaka Hill Highway
- 13 Tapawera Talking Café, 10-
11:30am, School/Community
Library
- 13 Digi Drop-in Session, School/
Community Library, 11am-1pm
- 20 Articles for Informer close 5pm
- 20 TDCC Special General Meeting,
Community Centre, 7pm
- 20 TDCC monthly meeting,
Community Centre, 7pm
- 25 Tapawera & Valleys Historical
Society Inc AGM , Community
Centre, 1:30pm,
- 27 Tea and Talk, Memorial Hall,
10:00am - 11:30am
- 25 Craft and Market Day, Village
Green, 10am-2pm

**GP & Nurse at
Tapawera Clinic**

(during school term time):

GP clinics – Mondays
9am – 12 midday

Nurse clinic – alternate
Tuesday mornings - phone
541 8911 for dates

Wakefield Police

Constable Jamie White –
jamie.white2@police.govt.nz
Constable Matthew Berquist –
matthew.berquist@police.govt.nz
Non Urgent (CRL) – Call 105
Happening Now – Call 111