

Informer, PO Box 15, Tapawera  
email [tapawerainformergmail.com](mailto:tapawerainformergmail.com)



The 2025 VAST Exhibition was a great success. VAST wants to thank our sponsors who help us each year to carry on with the exhibition.

- Gary Oldham for Signage
- Impressions Richmond for Peoples Choice Award
- Tapawera Four Square
- Purpose HQ Café, Voucher
- Tom, Lynda and Kevin for Firewood Raffle
- Nelson Honey
- Sherry River Apiaries
- Flat Rock Kohatu, Voucher
- Shedwood Hall
- Stu Bryant, Lloyd Faulkner, Flat Rock Kohatu, Sharon and Richard Rogers, for displaying our advertising signs.
- All members who contributed to the Grocery Raffles and other prizes

David Carson was our Guest Artist for the exhibition, it was a work of art in itself to watch David and helpers get The Babysitter into the hall then up onto the stage, definitely not for the faint hearted. David's video display was very thought provoking and many were quite puzzled by the concept, however the parody was in the title of the work, Make Art not Beef, very clever indeed. David explained that he took quite an amount of time to train his cattle so he could make the video.

Angie Miller won the Peoples Choice Art Award. Congratulations Angie.

Dallas Robinson won the Inaugural Craft Award with her quilts.

Congratulations to all the Artists and Crafters, especially our new members, you all contributed to making the exhibition a great success.

All raffles have been drawn and winners notified.

Many thanks to the 'transport' crew getting everything down to and back from the hall. Kirstie, Margaret and Brian.

Many thanks to our lighting crew, Brian, Craig, David and Gareth.

Rosie for the beautiful hydrangeas at the front desk.

Many thanks to the members of the public who visited the exhibition, friends, families and caravaners.

We look forward to seeing you all again in 2026.

Dallas Sec VAST Com.



## Library News

Happy New Year, everyone! We hope you're all feeling refreshed and ready for a great year.

The library has been buzzing with activity already this year! We've had some fun events, including the Wellby Talking Cafe, the Tasman District Library Digi Drop In, and our regular Chess Club.

The Wellby Talking Cafe was a hit, with about 15 people of all ages joining us for some lively chats, laughs, and yummy snacks. We'd love for you to come check it out sometime – it's held once a month.

Our first Digi Drop In was also a success! A few people came by with questions about all things digital. This is a fantastic resource for our library and community, and we're excited to keep it going. You can join us on the second Tuesday of each month from 11am to 1pm.

Chess Club is back in action every Tuesday morning! We've had lots of kids come along to sharpen their skills. We're also lucky to have Rob and Laree visit sometimes to share their chess expertise. If you're interested in playing a game with our students, just give us a call at the library. We'd be thrilled to have you!

We've welcomed many new families to the district, and it's been wonderful to see so many new faces at the library. It's such a valuable resource for our community, and we're delighted that more people are taking advantage of it. If you'd like to become a member and explore what we have to offer, we're located behind the tennis courts. We're open five days a week from 10:30am to 1:30pm. If you're a member and the library is unattended, you can simply ask at the office for a key and write down the books you borrow on the sheet provided at the library desk.

Feel free to contact Kelly or Cindy if you have any questions.

Phone: 03 522 4337 ext 213

Email: [library@tapawera.school.nz](mailto:library@tapawera.school.nz)

# Tapawera Community Craft and Market Day

Last Sunday of the month



Across the road from 4 Square  
on the village green, 10am to 2pm.

Bring along your crafts/produce  
/unwanted items to sell.



Enquiries to Amanda Beer on FB messenger or via the Tapawera and Surrounding Valleys FB page.

## RURAL POST, RD 2 Wakefield

Contact Nick & Jackie Costley for all your RD 2  
Wakefield postal needs.

Including prepaid envelopes, stamps, courier  
items and local freight from Wakefield, Dovedale  
and Tapawera. Prescriptions from Wakefield.

**Phone 0275418581**

## Material & adverts for Informer

All material is to be sent to either:

Informer, PO Box 15, Tapawera, 7055  
or email- [tapawerainform@gmail.com](mailto:tapawerainform@gmail.com)

To be received by 5pm  
20th of the Month

If emailing a word document please send in Word as an  
attachment.

If sending an advert please save as a jpeg before sending.

Please check your emails to see your article/advert has  
been received as sometimes there needs to be alterations.

## Advertising rates for Informer

Standard ad	Pay monthly	Pay annually
1/4 page advert	\$39	\$343
1/2 page advert	\$54	\$475
Full page advert	\$78	\$686

Adverts that require editing may cost extra

Mark & Tania Gill  
T/A MTJ Transport  
RD2, Nelson  
NZ Post Rural Contractors  
Servicing  
Motupiko-Korere-Kikiwa-Tophouse-St Arnaud-Glenhope

For all your Postage, Milk & Courier Freight  
Operating 3 Days Weekly  
(Monday-Wednesday-Friday)  
Departing Nelson 8.00am  
Phone 546 6295

The Informer is produced and published by the Tapawera and Districts  
Community Council, PO Box 15, Tapawera, 7055;  
email: [tapawerainform@gmail.com](mailto:tapawerainform@gmail.com)  
Circulation 635  
Editor: Gill Hammersley  
The Editor and Publisher try to ensure information published is truthful

and accurate, but do not accept any responsibility for errors or  
omissions, or for any consequences of readers' relying on the  
information published. Opinions expressed by contributors may or may  
not be endorsed by the Editor or Publisher.  
All material submitted, whether editorial or advertising, is accepted at  
the discretion of the Editor and the Publisher.



# Tapawera CONNECT

**Senior's Snippets March 2025** with Janine Leeden, 0277525975

It was very remiss of me not to give an update on our pre-Christmas event at Thelma House, in Upper Stanley Brook. Thank you to Nicola Allan for opening her property to us, for Raewyn at Kainga Kai for catering. Everyone went home having had a delightful wander around Nicola's amazing gardens, a good feed and some lovely gifts. Each person was able to choose from a big hamper (so they only took things they really wanted).



The hamper was filled with goods purchased through Wakefield Pharmacy, Sherry Valley Honey, boxes of chocolates and some fun contributions by our fun volunteer, Amanda Beer. I think I can safely say we all had a really lovely day!



Sit and Be Fit will continue every Friday morning at 10-11am with a cuppa, chat and opportunity to join in our current favourite game – Mexican Trains. We meet at St Peter's Church on the Main Road. Great value for \$3 for the morning!

Our next WELLBY TALKING CAFE will be back at the School / Community Library on Tuesday, 11th March, 10-11.30am. A \$3 koha will help with morning tea costs. Kelly will be in the library to help you with membership and sorting any book requests you might have. See you there! The DIGI DROP-IN girls will be there from 11am-1pm, helping you sort out any tech issues you might be having.

Tea and Talk will be at the Memorial Hall on Tuesday, 25th March 2025, from 10-11.30am. \$3 covers morning tea and a great time of catching up. I'm hoping to have a dietitian from NBPH come and speak to us about diabetes and how if you've been told you are pre-diabetic, how changing your diet may well help.

I hope you'll enjoy the start of Autumn (after a pathetic effort at Summer really). I'm looking forward to some good foraging this season. Take care and enjoy the changing colours around the valleys.



Tapawera and Valleys Historical Society Inc

**Trip to the Baton**

**Sunday 23<sup>rd</sup> March**

Richard and Fiona Lublow will tell us the history of the Baton

Meet 10am at Tapawera at the Kiwi Station

Anyone who is interested is welcome to join us

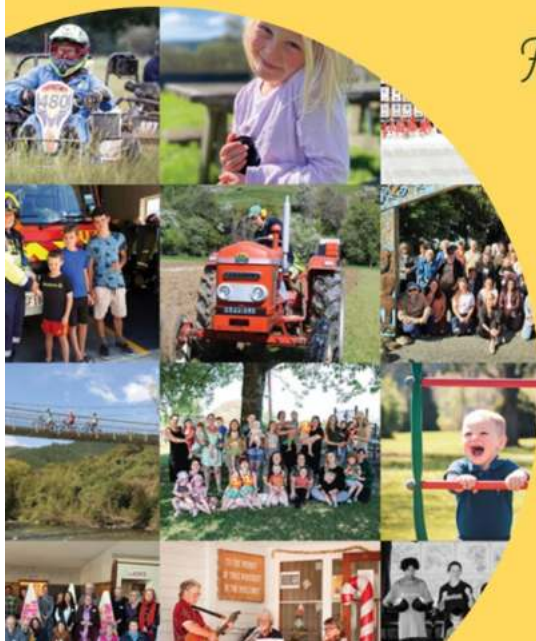
Bring your lunch, drink and a chair

Any enquiries to ph 5224317

# Community Celebration



JOIN US FOR A CELEBRATION OF THE AWESOME PROJECTS HAPPENING IN THE COMMUNITY AND TO HEAR ABOUT NEW AND UPCOMING PROJECTS OVER SHARED KAI.



*Friday April 11, 2025*

*5pm until 8.30pm*

Bring a plate or something for the BBQ  
BYO drinks, Live Music  
All Welcome

SHEDWOOD HALL



**Servicing Tapawera, Kohatu, Tadmor, Motueka Valley and surrounding areas daily**

**"If its urgent, we'll be there!"**

**Plumbing - Gasfitting - Drainage**  
**Blocked Drains - Leaky taps**  
**Spouting - Hot water - Wastewater system servicing**

Phone, email or Facebook Messenger us to book your Job or Free Quote

**Phone - 03 543 8090**

**Email - [info@tuffnell.co.nz](mailto:info@tuffnell.co.nz)**

***"We thank all our clients for their continued support"***

## HANDYMAN

- \* General property maintenance
- \* Clean out/tidy up
- \* Water blasting
- \* Gardening
- \* Chain sawing
- \* Repairs
- \* Demolition
- \* Any farm work

Fair hourly rate. Honest and hard working.

Local references available.

Please enquire to Jeremy Ellis (03) 522 4460





COMMUNITY  
TRANSPORT TRUST  
Nelson Tasman

## Update on Community Transport Trust Travel

We are continuing our passenger service to Richmond on Tuesdays and Motueka on Thursdays up until Easter when we will have offered it for a year with the support of our Tapawera volunteer drivers. Despite a lot of enthusiastic support for there being such a community transport service offered with our Serena vehicle, there are few people using it. However, the vehicle is being used more for hiring to go to particular events with registered drivers which is good. According to transport researchers, March is generally the best month for measuring travel behaviour as people are more settled in their work/school journeys etc than at other times – so it would be a good time to demonstrate patronage if you want to take the \$12 return trip and if we are able to keep it going! See our website <https://www.ntctt.org.nz/> for more information.

The Community Transport Trust is also working to support other transport initiatives in the region that align with the Trust's objectives such as the eBus familiarisation programme that is being run by the Councils and Age Concern. If anyone would like to attend the session at Richmond Library on Wednesday 5th March from 10-12, please contact our coordinator Jude on 0226822373 and we can arrange a special trip for that morning if there's sufficient interest. If you've a gold card or community services card, bring it along.

Another event we are supporting is to the Positive Ageing Forum on Saturday 5th April (on from 10-3 at the Headingly Centre, Richmond) as we're helping with free transport to that from the main bus stand in Richmond. We're also keen to enable people from Tapawera to attend. Again, please contact Jude or Janine as the Tapawera Connect Seniors coordinator if you're interested to go and we'll organise a special trip for that.

It's good to see new developments in carsharing happening locally, with Nelson City Council enabling MEVO to provide car hire options in Nelson as they do in Auckland and Wellington, and a group in Māpua working towards developing a carsharing scheme. Perhaps we can do more on that in Tapawera as transport costs become higher and it makes more sense to share trip costs and social travel time. It is also positive to see that Nelson/Tasman is the first place to bring back carrying bikes on buses again after there was a ban. With transport emissions being the highest component of household emissions, and if we don't want to hasten faster to more extreme weather patterns,

then it makes sense to cut transport emissions where we can.

Jo Leyland

Trustee, Nelson Tasman Community Transport Trust

## Preserving Season - Enjoy the Harvest All Year Round!

Now's a good time get into preserving fruit and veg so you can have great food over many months. And get a HUGE buzz every time you look at the colourful jars you've created, or when opening a jar of bottled fruit in mid-winter, or putting your own home-made jam or chutney on toast or crackers. Or giving a spare jar to a friend. Preserving your own food is a good example of food resilience. There are many good recipes around, particularly books like Edmonds Cookbook, Digby Law Pickle & Chutney Cookbook, and a web search is bound to turn up many for the fruit or veg you want to preserve.

Our region grows a great range of fruit and veg that can be made into jams, chutneys, pickles, sauces, bottled fruit, and other great food that you can preserve and eat all year round. Plums are plentiful right now, peaches and apples are coming on stream, and there may still be some berries around. And tomatoes, peppers and beetroot are all popular for preserving veg. Fruit or veg that's home-grown, or bought when at peak season and at a good price, is excellent value. In my kitchen pick-your-own (PYO) is a very useful source of preserving tomatoes, peppers and other veg in March and April. A special bonus when using local ingredients is you can be confident your preserved items are not from China, Italy or other countries that are increasingly listed on the labels of many commercial foods.

There are several methods of preserving - bottling, freezing, dehydrating and so on - but the 'preserving' I refer to here is processing fruit and veg so it can be stored at room temperature in sealed containers. That's jams, bottled fruit, sauces, pickles, chutneys. Basic stuff, simple to make, great to eat.

These simple methods will be the focus of a preserving workshop being offered in Tapawera in April, as part of Tapawera's community food resilience goal. The preliminary plan for this workshop is for each participant to learn how to make (and take home) two or three items, from a selection of a jam, a chutney, a sauce and a bottled fruit. Registrations will be limited to eight. Details will be available in the Community Centre, on Facebook and in the April edition of The Informer.

Heather Spence

TAPAWERA NETBALL CLUB  
PRESENTS



**QUIZ  
NIGHT**

**BYO DRINKS & NIBBLES**

**QUIZ STARTS AT 7:00PM  
FRIDAY, 4 APRIL  
TAPAWERA RUGBY CLUB ROOMS**

Just \$30 per team, with a maximum of 5 people per  
team!

**REGISTER YOUR TEAM TODAY!**

by emailing us at  
[tapaweranetballclub1988@gmail.com](mailto:tapaweranetballclub1988@gmail.com)

# COME & PLAY *Netball*

**SENIOR TRIALS**  
28TH FEBRUARY 7-8PM

**TAPAWERA  
NETBALL  
COURTS**

**SCHOOL TEAM TRIALS**  
5TH MARCH 2025  
STARTING 3:20PM

**ALL PLAYER  
LEVELS  
WELCOME!**

*Ready. Net. Go!*







All Accounts Matter LTD

## For all your accounting and tax needs!

If you are looking for a new Accountant, now is the perfect time! I would love to find out about your business and have a no obligation chat about how I can help you. So don't wait, call me now!

Sonia Emerson Chartered Accountant

GST | Tax Returns | Payroll | Bookkeeping | Cashflow Forecasting  
Management Reporting | Rental Statements | Farm Accounts



ACCOUNTING SOFTWARE



2020/2021  
Certified  
Consultant



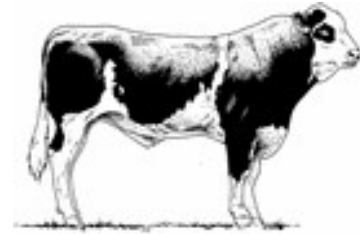
M: 021 221 1009 | P: 03 541 9005 | sonia@allaccounts.co.nz  
367 Wakefield-Kohatu Highway, RD1, Wakefield 7095

[www.allaccounts.co.nz](http://www.allaccounts.co.nz)

Gillespie—1

MAF approved

Home kill butchery



03 547 7746

Butcher / journeyman  
Specializing in quality small goods  
Factory: 111 Bolt Rd, Nelson

## Bryan, your regional HRV expert, will be happy to answer all your HRV ventilation, and Haier air conditioning needs.



HRV ventilation provides fresh filtered air into the home this summer and reduces airborne nasties.

### Haier

Haier air conditioning is the world's number one major appliance brand, based on volume sales and will keep you cool all summer long\*.

## Book your free home assessment for Bryan's next trip to your area.

Please call Bryan on 027 540 3780  
or email [bryan.loxton@hrv.co.nz](mailto:bryan.loxton@hrv.co.nz)

\*Source Euromonitor International Limited; Consumer Appliances 2024ed, % unit share, 2023 volume sales data. Major Appliances category is the sum of dishwashers, home laundry appliances, large cooking appliances, microwaves and refrigeration appliances. Volume sales refers to sales in retail channel, builder merchants and construction channel.







**WAKEFIELD & DISTRICTS**  
COMMUNITY HEALTH CENTRE

We are delighted to inform our patients that we once again have a physio service at the Practice. In partnership with The Physio Clinic Motueka, Lara Malcolm will be here to see our patients, initially on Wednesdays and Fridays. Please call us to make an appointment.

Lara has given a brief bio below:

*I'm Lara Malcolm, I've been working as a Physio for the past 9 years in both Nelson and Motueka. I graduated from Otago University in 2015 and have since completed a post-graduate diploma in musculoskeletal physiotherapy through AUT. I have enjoyed working in the Tasman region, doing clinic-based work, as well as occupational and older-person physiotherapy. I'm looking forward to getting to know the Wakefield community and working as part of the Wakefield Health Centre team.*

*Beyond work, I'm born and bred in Nelson and have recently settled in Richmond. It has been great being back in the region over the past years, being involved with the community and making the most of the great outdoors the region has to offer.*

We are also delighted to welcome Chrissy Takai as a new Practice Nurse. We think she is a great fit for our practice and patients. She has written a little about herself below and has also let us use a picture.



*Mālō e lelei, Kia Ora,*

*I'm Chrissy Takai and I've just joined the Wakefield Health Centre as a nurse. I'm of kiwi/Tongan decent & was raised in Brightwater. I've been practicing for 2 years as a community nurse working with our Pasifika communities across Nelson/Tasman.*

*We have strong family roots in the Brightwater & Wakefield areas. It feels great to be back out here & in the practice I attended as a child with such a great team. I'm looking forward to meeting everyone.*

*Mālō 'aupito, Nga Mihi,  
Chrissy*



## Creative Fibre Tapawera

Our year started with preparing for our Open Day on 29th January.

This is a day where members from the other Top of the South Creative Fibre groups come out to visit us for a day of crafting, conversation, catching up with friends, visiting VAST and buying a delicious fruit ice cream from Tegan as well as supporting our sales table and raffles. It was great to see that each group had a raffle winner.

My thanks to Irene and Catherine on the raffle table, Etta and Lynda on the sales table, Janet and Shirley taking on kitchen duties.

Thanks also to everyone who helped with the pack up, tidy up and lockup.

Sadly, one of our members has had to resign due to her work commitments, we will miss her company and her great sense of humour.

We have an interesting programme for the year coming, paperbag books, rag rugs, pocket pals, mystery tour, Blenheim roadie, kimusaige. As well as time to start new projects, or complete projects already underway.


No matter if you spin, sew, knit, crochet or cross stitch, you are very welcome to join us at the Memorial Hall 10am – 3pm each Wednesday, or at 10 Totara Street 7pm – 9pm on a Tuesday evening.

Cheers Dallas

## Volunteer Welfare Officers required - INTERESTED?

The Tapawera Community is looking for new Welfare Officers to volunteer to join an existing small team. Welfare Officers will be trained by the Nelson Tasman Emergency Management team (most likely in June of this year) so they know what to do in the case of an Emergency. Working with other Welfare Officers that will be delegated responsibility to support members within the community who are seeking support after a natural disaster. They will help set up and then work within a Service Centre environment that provides advice, accommodation and information to those who require this in a state of Emergency. Volunteers will have a natural empathy and compassion towards others and a respect for many cultural and ethical differences that exist within our region. If interested, please email [nicky\\_mccormick@me.com](mailto:nicky_mccormick@me.com) or phone 0210569094.

*The Lady Tradie* 

Has your husband got a  round to

Spring has sprung

and the grass has riz !

Do you wonder where a handyman is ?

Can't get one ?

Then call " Jen the Lady Tradie "

for all your outside spring clean-up jobs

\* Gutters full of leaves;

\* Lawns that are starting to bolt;

\* Waterblasting those slippery paths

and all that spring growth that just might get away on you.

\* **Local Person** \* **Referees Available** \*

Consideration & discount shown towards Senior Citizens

**FREE QUOTES**

**Contact Jennifer**

Phone or text: **027 544 2663**

After hours/leave a message: **03 522 4453**

Email enquiries to: [jentheladytradie@gmail.com](mailto:jentheladytradie@gmail.com)

**TOKA  
SUFFOLKS**



**RAMS**

**FOR  
SALE**

Available now  
Please phone Mac

**021 0443414**

## Fundraising Volunteers Needed!

Together, we can build a community hub that will bring us closer than ever!

Give as much or as little time as you can  
Tasks range from:

- brainstorming fundraising and sponsorship recognition ideas,
- selling raffle tickets
- helping with events.

The fundraising team meets monthly or fortnightly as required on a weekday evening.

If you've got some great ideas, we'd love to hear from you!

Della Webby, Hub Fundraising Coordinator  
Phone: 027 479 4420, [della.webby@gmail.com](mailto:della.webby@gmail.com)





## Tasman District Council Stalwart not Re-standing for Council

26-year Tasman District Council veteran, Deputy Mayor Stuart Bryant has announced his decision to not re-stand for Council at the elections in October this year. "The time has come to pass the baton to someone new and spend more time with our nine grandchildren," he says.

Bryant was first elected to Council June 1999 in a by-election following the death of Councillor Murray Borlase. Since then, he has had eight more elections but has only had to campaign two of those times, having been re-elected unopposed on six occasions.

Over this time, he has worked with three mayors. John Hurley was the newly elected mayor when he started, having been elected in 1998. Two-term Councillor Richard Kempthorne was elected in 2007 serving four terms as mayor, and former deputy mayor Tim King was elected in 2019. Bryant took up King's mantle, becoming deputy mayor in 2019.

When Bryant first joined the Council, he was one of two elected members in the Lakes-Murchison ward, working alongside Murchison's Ted O'Regan. However, in 2007 a representation review saw the ward lose one of its elected representatives, and he became the sole ward Councillor for the region's largest ward, spanning from Wakefield to Lake Rotoiti, Murchison and Tapawera.

Bryant says that he's immensely proud of the community facilities that have been built in that time, especially those in Murchison and Lake Rotoiti. "For rural communities, having a central hub to connect and engage is really important for social cohesion and recreation."

"I'm still aiming to have the Tapawera hub started in this term of Council and planning well under way for the stage two extension of the Murchison sports centre," he says.

The chair of the Regional Transport Committee and former chair of the Environment and Planning Committee acknowledged the need for good, long-term planning, especially around infrastructure and critical services such as water and roading. "I am aware how important water security is for the region and have been a supporter of the Wai-iti and Waimea dams since their inception through to completion," he says. "Similarly, working with Nelson City Council to extend the public transport services to better support the rural communities and Motueka has been incredibly satisfying."

However, Bryant says that it's important to provide opportunities for new blood and new thinking to join Council, and that after 26 years of community service it was time to step aside. "When I joined Council my four children were at primary and high school, but now they've all got children of their own."

"I would like to thank all those people who have encouraged, supported and voted for me over the last 26 years; it's been an honour to serve the community."

"A special thanks to my wife Jo and family for their unwavering support and doing so many things behind the scenes that enabled me to undertake this role for so long."

## Pride in Our Town - Sabine

Sabine and her partner Andrew moved to Tapawera in 2020. Sabine is interested in Icelandic horses and they wanted to buy a property with enough land of their own to start breeding them.

Sabine also liked the idea of living and working in the same community and applied for a job in Tapawera Area School as soon as possible. She is working in the Year 0/1 class which is her favourite age group. Sabine is also the Community Connector this year and thoroughly enjoys getting to know more and more people and invites them to come and see the school grounds with various activities. Her favourite one is the garden re-establishing, because all children at school can be involved if they wish. The 5 year olds were very excited and couldn't believe how yummy the beans were when picked and eaten fresh. But watch this space, there is more to come.





Calling ALL New  
and Returning Players  
**Be Part of the Team**



## TAPAWERA RUGBY

Register online for the 2025 season  
Either use the QR Code or  
find the link on our FB Page



Rippa U6/7s and Tackle U8s and UPI! All enquires either message Tapawera Rugby Facebook page  
or email tapawerarugby@gmail.com, Alex 027 389 8661

**glow**  
HOLISTIC MASSAGE

RELAXATION / DEEP TISSUE

1 hour Massage	\$99
1.5 hours Massage	\$139

PACKAGES (SAVE 10%)

3 x 1 hour Massage	\$267
3 x 1.5 hour Massage	\$375

CONTACT SAMMY TO BOOK:

Ph/Text or send us a message on  
Instagram or Facebook

96 Main Road Tapawera

027 522 4189  
@glowholisticmassage

Relax  
&  
Revive

**Tasman Bay  
Chiropractic**  
Keeping you in the game since 2002

Referrals, families and  
all new clients welcome

Visit our website or call for more information



03 544 4554 Monday-Saturday  
tasmanbaychiropractic.co.nz

Find us on



## Golden Bush Garden Club



The February meeting was held at Geraldine Carlton's lovely garden in Riwaka. Geraldine's garden is always changing. The begonia house was a mass of vibrant colour as well as the dahlias and roses, and also the other numerous plantings throughout the property. It is hard to believe the development that has taken place over a few years.



The three raffles of plants and a lovely table cloth set were won by Trish, Cathy and Ian. Welcome to our new members -

Trish Hunt, Sharleen Frieriep and Nola Roeske.

The next meeting is Thursday March 13th, 11am at the Restore Balance Retreat, 2689 Motueka Valley Highway, Woodstock. There is parking up the driveway. Please bring chair, cup and lunch. There will be a raffle and auction. There is a lovely woodland walk.

My garden has just enjoyed a real downpour of rain throughout the night. All the plants and trees have received a very welcome soaking. The roses in particular are once again looking at their best and the hydrangeas have been given a new lease on life.

Happy Gardening.

Shirley.



## Tapawera CONNECT

### Tapawera Community Hub Update from Council:

Since the project initiation kicked off in August 2024 Council has been undertaking due diligence on the 95 Main Road Tapawera Site offered up in the feasibility study.

There have also been meetings with members of the community and with TDCC and Tapawera Connect; as a result we have widened the review to look at other potential hub locations.

The project team is currently completing this review.

In March 2025 it is planned to set up the Project Advisory Group, to represent the community and commence the requirements for the proposed hub facility for the future design stage.

In March 2025 the project team will seek guidance from Council on the preferred location for the hub. Once this is confirmed it is planned to commence site investigation and appoint designers.

Exciting times!

The three raffles of plants and a lovely table cloth set were won by Trish, Cathy and Ian. Welcome to our new members -

Trish Hunt, Sharleen Frieriep and Nola Roeske.

The next meeting is Thursday March 13th, 11am at the Restore Balance Retreat, 2689 Motueka Valley Highway, Woodstock. There is parking up the driveway. Please bring chair, cup and lunch. There will be a raffle and auction. There is a lovely woodland walk.

My garden has just enjoyed a real downpour of rain throughout the night. All the plants and trees have received a very welcome soaking. The roses in particular are once again looking at their best and the hydrangeas have been given a new lease on life.

Happy Gardening.

Shirley.

**Sit and Be Fit**  
for age 50+

A time to keep your body moving and healthy and connect with others

30 minutes of exercise followed by a cuppa.  
St. Peter's church building, Main Rd.  
10am-11am each Friday, \$3

Contact: Janine Leeden  
027 752 5975

# WADSWORTH MOTORS LTD.

- Coach Charters & Tours
- Mini Bus Hire.
- School Transport
- Professional friendly drivers
- Members of the Bus & Coach Association

Over 100  
Years of  
Service

wadsworthmotors@extra.co.nz  
100 Main Rd, Tapawera  
www.wadsworthmotors.co.nz

**027 4873167**



## TAPAWERA ELECTRICAL

**Tony Stephens**

Registered Electrician

Ph/fax 5224257  
0276249489  
Rena 0275616510

All electrical needs  
Domestic & Rural

Wiring, faults, some home appliance repairs  
New heat pump installations



Free Quotes  
Competitively priced



TOWN & COUNTRY

# VET

*"...for all creatures great & small..."*

**Regular Tapawera visits  
discounted mileage  
T&Cs apply**

**Ph 544 1200**

info@tcvet.co.nz \* www.tcvet.co.nz

**25 Edward Street, Wakefield  
35 McGlashen Avenue, Richmond**



**24 hour emergency vet**





## Introducing the 2025 TC Community Led Development Team:

Secretary: Kelly Russell  
Treasurer: Michelle Vincent  
TDCC Rep: Geoff Proffit  
Operations Manager: Al MacKinnon  
Seniors Wellbeing Coordinator: Janine Leeden  
Youth Coordinators: Josie Orr and Leigh Davis  
Communications and Hub Coordinator: Phoebe Quinlivan  
Community Led Development Connector and Hub Fundraising Coordinator: Della Webby  
Community Led Development Connector 2: (Interviews being held at time of publication)  
Trust members: Nicky McCormick, Lisa Butcher, Tamara Eggers, Michelle Vincent  
Department of Internal Affairs (DIA) Partnership Manager: Eva Lawrence  
Website team: Sugarcube Studios (Tapawera based)- Danny Sugar and Ana Aceves

## Our priorities for 2025:

1. Continuing to support projects from the Community Plan including:
  - The Community Hub
  - The Food Resilience Group (Gavin and Heather)
  - The School and Community Gardens (Sabine Reinert and Sarah Coard)
  - Shedwood Bush (Martin Bonny and Mark Soper)
  - River Bird Project (Kate Radlof)
  - Tapawera Kai Support (Judy Benjamin)
  - Fruit Tree Planting (TDC Community Grant and support from Golden Bush Garden Club)
  - Tapawera Market (Amanda Beer)
  - Backyard Trapping (Predator Free NZ / MCC)
  - Tasman Transport Trust
  - Community Events and Celebrations
  - Our community's Emergency Preparedness Plan.
2. Continuing to support and strengthen our Youth Group and Seniors Wellbeing activities
3. Re-establishing a Mum and Dad's Group
4. Continuing to build relationships and collaborations across the community and within the wider region to bring opportunities and services to the area
5. Continuing to support new projects which arise from within the community and align with our Community Vision of being Caring and Resilient.
6. Continuing to offer Community Workshops.

A huge thanks to all the amazing people who work hard to make this community an amazing place to live in! Here's to a wonderful and collaborative 2025!

**Book Discussion Group**

Meet: 4th Thursday in month, 10am  
 Contact: Adrienne Baigent 021408892

**Federated Farmers**

Contact: Harry Matthews - Field Rep -  
 0275078901

**Golden Bush Garden Club**

Meet: 2nd Thursday of month  
 Contact: President, Linda Milson  
 02102510945, or Shirley Percy 5224924

**Golf**

Meet: every Sunday, Ladies 9 hole  
 every Tuesday  
 Contact: Gary Oldham ph. 0278080578

**Historical Society**

Contact: Barbara Carleton ph. 5224317

**Informer**

PO Box 15 Tapawera  
 Email [tapawerainformers@gmail.com](mailto:tapawerainformers@gmail.com)

**Justice of The Peace**

Peter Phillips ph. 5224313  
 John Ellis ph. 021 522429  
 Brent Hodkinson ph. 5224381  
 Susan Fenemor ph. 0275224009 (text  
 during school hours)

**MENZSHED**

Contact: John Wilmshurst ph. 5224616

**Netball**

Contact: Susan Fenemor ph.  
 0275224009 (text during school hours)

**Ramblers**

Meet: each month  
 Contact: Shirley Percy ph. 5224924

**Shedwood Hall bookings**

Contact: Tania Higgins ph. 5224587

**St Andrews Church Stanley Brook**

Services every Sunday. Cup of tea  
 afterwards.  
 Contact: Lee Winter ph. 5224160

**St John – Tapawera**

**For emergencies Dial 111,**  
 Email [info@stjohn.org.nz](mailto:info@stjohn.org.nz)

**Tapawera & Dist. Community Church**

**St. Peter's Tapawera:** no services at  
 present  
 Contact: Church office 03 541 8883  
[wakefieldanglican.xtra.co.nz](mailto:wakefieldanglican.xtra.co.nz)  
 Urgent enquiries to Andrea 0024169386

**Tapawera Food Bank**

Contact: Suzzi Lankshear ph.  
 0277491063

**Tapawera & Dist. Community Council**

Meetings: 3rd Tuesday of month,  
 7pm Tapawera Community Centre,  
 email: [TapaweraTDCC@gmail.com](mailto:TapaweraTDCC@gmail.com)

**Tapawera Community Centre**

Email: Nicola Allan  
[nicolaallan434@gmail.com](mailto:nicolaallan434@gmail.com) or  
[TapaweraTDCC@gmail.com](mailto:TapaweraTDCC@gmail.com)

**Tapawera Connect**

Contact: Phoebe Quinlivan ph. 021 211  
 6730 or 522 4929, email:  
[tapaweraconnect@gmail.com](mailto:tapaweraconnect@gmail.com)

**Tapawera Creative Fibre**

Meet: every Wednesdays, 10am-2pm,  
 Memorial Hall  
 Contact: Dallas Robinson ph. 5224984

**Tapawera Jujutsu Club**

Contact: Tony Hammersley ph. 5224609

**Tapawera Music/Country Music Club**

Meet: Alternate Sundays, Tapawera  
 Hotel 7:30pm  
 Contact: Elaine Douglas ph. 5418612

**Tapawera Op Shop**

Open: Tue 11am-2pm, Wed 10am-2pm,  
 Sat 11am-2pm, last Sun of month 10am-  
 2pm  
 Contact: Amanda Beer ph. 0278024612

**Tapawera Playcentre**

Meet: Mon & Thur, 10am -12:30pm  
 Memorial Hall ph. 5224456

**Tapawera Rugby Football Club**

Bookings: ph. Judy Benjamin 5224445

**Tapawera Sport & Recreation Society**

Contact: Judy Benjamin ph. 5224445

**Tapawera Volunteer Fire Brigade**

Contact: Dean Millar Chief ph.  
 0279651399; Ted Oakly Deputy Chief  
 ph. 0210704033

**TAS / Community Library**

Mon-Fri 10:30am-1:30pm. Contact:  
 Lareen Bonnington ph. 5224149  
 Library ph. 5224337/ext. 213

**TESSI**

Contact: Bruce Whyte ph. 5224550

**Toy Library**

Open Monday or via arrangement:10:30  
 -11:30am contact Jan Barker:  
 0273915424 or 5524984

**Visual Arts Society Tapawera**

Contact: Dallas Robinson ph. 5224984

**What's on  
March**

- 5 Netball club school team trials,  
TAS netball courts, 3.20pm
- 11 Tapawera Talking Café, 10-  
11:30am, School/Community  
Library
- 11 Digi Drop-in Session, School/  
Community Library, 11am-1pm
- 13 Garden Club, 11am, Restore  
Balance Retreat, 2689 Motueka  
Valley Highway, Woodstock
- 18 TDCC monthly meeting,  
Community Centre, 7pm
- 20 Articles for Informer close 5pm
- 23 Historical Society trip to the  
Baton, meet 10am at Kiwi  
Station, Tapawera
- 25 Tea and Talk, Memorial Hall,  
10:00am - 11:30am
- 30 Craft and Market Day, Village  
Green, 10am-2pm

**GP & Nurse at  
Tapawera Clinic**

(during school term time):

**GP clinics – Mondays**  
 9am – 12 midday

**Nurse clinic – alternate**  
 Tuesday mornings - phone  
 541 8911 for dates

**Wakefield Police**

Constable Jamie White –  
[jamie.white2@police.govt.nz](mailto:jamie.white2@police.govt.nz)  
 Constable Matthew Berquist –  
[matthew.berquist@police.govt.nz](mailto:matthew.berquist@police.govt.nz)  
 Non Urgent (CRL) – Call 105  
 Happening Now – Call 111