

New Chipper for School & Community Garden

A new chipper for the Tapawera School & Community Garden has been made possible with funding raised in the community.

Garden project community lead Gavin Scoble says it is fantastic that the community has funded this piece of equipment for the garden which is a collaboration between the school and the wider Tapawera community.

Timber generously donated by Judith and Kim Rowe was cut and split into firewood as a volunteer contribution by Andrew Burden and firewood sales have provided half the cost of the chipper.

The other half of the cost of the chipper has been met with a grant from the Tapawera & Districts Community Council. "We're very grateful for the community grant, and we not only thank the TDCC for approving it, but also acknowledge the work over the years by community volunteers at the Op Shop which provides the funding for community grants," Gavin says.

Garden school lead Sabine Reinert says: "We also thank STIHL Shop Richmond for giving us a good price on the chipper, which Jason Ahnfeldt delivered recently".

The chipper will be used to turn prunings from the garden, the school grounds and future community fruit trees into mulch for use at the garden.

Gavin says the garden could also accept material from the community for chipping to mulch.

"Once the chipper is operating, we'll look at how that could work. Disease-free material could be dropped off at the garden on monthly working bee days. It has also been suggested community members bringing suitable material to be chipped could take the result away to use on their own properties."

He says it would be a great example of reducing waste and recycling organic material.

Supporting the rejuvenation of the School & Community Garden is one of three food security projects in the Tapawera Community Plan.

The other projects are the planting of fruit trees in Tapawera village, and a longer term initiative to build food networks in Tapawera district.

Sabine says students and teachers will be using the garden, outdoor classroom, tunnel house and shed to

enhance the garden or to do school work in a different environment other than the school classroom.

Gavin says community members involved see the SCG as a key part of boosting food resilience in Tapawera and increasing food security through growing food to share, encouraging more people to grow their own food by offering hands-on experience, and enhancing connection and sharing with each other.



Pictured left to right with the School & Community Garden's new chipper are: Tapawera Op Shop manager Amanda Beer, Andrew Burden, Sabine Reinert, Jason Ahnfeldt (STIHL Shop Richmond), Judith Rowe, Gavin Scoble

Tapawera Hub Update

Since the project initiation kicked off in August 2024, Council has been undertaking due diligence on the 95 Main Road Tapawera Site offered up in the feasibility study.

There have also been meetings with members of the community and with TDCC and Tapawera Connect, and as a result we have widened the review to look at other potential hub locations.

The project team is currently completing this review.

In February 2025 it is planned to set up the Project Advisory Group, to represent the community and commence the requirements for the proposed hub facility for the future design stage.

In March 2025 the project team will seek guidance from Council on the preferred location for the hub. Once this is confirmed it is planned to commence site investigation and appoint designers.



"...for all creatures great & small..."

**Regular Tapawera visits
discounted mileage
T&Cs apply**

Ph 544 1200

info@tcvet.co.nz * www.tcvet.co.nz

**25 Edward Street, Wakefield
35 McGlashen Avenue, Richmond**



24 hour emergency vet



All Accounts Matter LTD

**For all your accounting
and tax needs!**

If you are looking for a new Accountant, now is the perfect time! I would love to find out about your business and have a no obligation chat about how I can help you. So don't wait, call me now!

Sonia Emerson Chartered Accountant

GST | Tax Returns | Payroll | Bookkeeping | Cashflow Forecasting
Management Reporting | Rental Statements | Farm Accounts



ACCOUNTING SOFTWARE



2020/2021
Certified
Consultant



M: 021 221 1009 | P: 03 541 9005 | sonia@allaccounts.co.nz
367 Wakefield-Kohatu Highway, RD1, Wakefield 7095

www.allaccounts.co.nz

RURAL POST, RD 2 Wakefield

Contact Nick & Jackie Costley for all your RD 2 Wakefield postal needs.

Including prepaid envelopes, stamps, courier items and local freight from Wakefield, Dovedale and Tapawera. Prescriptions from Wakefield.

Phone 0275418581

Mark & Tania Gill
T/A MTJ Transport
RD2, Nelson

NZ Post Rural Contractors
Servicing

Motupiko-Korere-Kikiwa-Tophouse-St Arnaud-Glenhope

For all your Postage, Milk & Courier Freight
Operating 3 Days Weekly
(Monday-Wednesday-Friday)
Departing Nelson 8.00am
Phone 546 6295

Material & adverts for Informer

All material is to be sent to either:

Informer, PO Box 15, Tapawera, 7055
or email- tapawerainform@gmail.com

To be received by 5pm
20th of the Month

If emailing a word document please send in Word as an attachment.

If sending an advert please save as a jpeg before sending.

Please check your emails to see your article/advert has been received as sometimes there needs to be alterations.

Advertising rates for Informer

Standard ad	Pay monthly	Pay annually
1/4 page advert	\$39	\$343
1/2 page advert	\$54	\$475
Full page advert	\$78	\$686

Adverts that require editing may cost extra

The Informer is produced and published by the Tapawera and Districts Community Council, PO Box 15, Tapawera, 7055;
email: tapawerainform@gmail.com
Circulation 635
Editor: Gill Hammersley
The Editor and Publisher try to ensure information published is truthful

and accurate, but do not accept any responsibility for errors or omissions, or for any consequences of readers' relying on the information published. Opinions expressed by contributors may or may not be endorsed by the Editor or Publisher.
All material submitted, whether editorial or advertising, is accepted at the discretion of the Editor and the Publisher.



A Very Versatile Vegetable

The December Christmas meeting was held at Craigholm Woodland Garden at Ngatimoti on a beautiful summer's day. After the auction and enjoying a shared meal, the ten hamper raffles were drawn. We were then able to explore the extensive gardens which have been established over many years. It was a lovely venue for our Christmas break up with so much to see and admire. Craigholm is a country garden well worth visiting.

Next meeting is Thursday February 13th, 11am at Geraldine's, 27 Umakuri Rd, Riwaka. Please park up driveway before the gate. Bring lunch, chair and cup. There will be an auction and raffles. Geraldine's garden is always changing and the begonias will be out and looking beautiful.

Just to let you know that last year Tasman Bay Roses was sold and is now known as Cornerstone Roses, 144 Lodder Lane, Riwaka, www.cornerstonerose.co.nz. They plan to have a retail shop open but it would be best to check their website first. They have roses that are often not available elsewhere.

The Brightwater Summer Flower Show is on Saturday 8th February at Brightwater Hall. 9am to 4pm.

The recent rain has done wonders for the garden – never seen it so green and lush at this time of the year – the lawns as well!

Happy Gardening. Shirley



As soon as the sun came out in spring my garden exploded with leafy greens, many of which were weeds. And several months on, not having dealt with the weeds, I still need to search to find the lettuces - does that sound familiar? I recently read about a way to turn weeds into liquid fertiliser (albeit 'it pongs' says the author), so I may get around to making some. (<https://www.growveg.com.au/guides/make-fertilizer-from-weeds/>)

The usual glut of fresh summer veg - stars of which surely are zucchini/courgettes - keeps many of us gardening happily for months. Zucchini, a very, very versatile vegetable, can be made into a huge range of savoury and sweet dishes. At the January school & community garden working bee, volunteers were treated to a fabulous zucchini loaf - rich, moist, and chocolatey - thanks to Josie Orr. Her recipe can be found at <https://www.lazycatkitchen.com/> and search for vegan-chocolate-courgette-cake. And I've also found a variety of good recipes on www.recipetineats.com, my usual first go-to food website.



So if you're looking for ways to use those zucchini that are taking over your garden, or are such good value at the moment, try something new. Recipes are plentiful - recipe books in our community library, our op shop, and heaps on the web if you're into that. Have fun. And if you're interested in learning how to grow great, fresh vegetables, a good place to start is at the school and community garden, as one of its great volunteer team.



"Simple Life Hacks"

Brought to you by thelmahouse.nz

"Remove scratches from old wooden furniture by rubbing a fresh walnut on the scratch"



Art & Craft Exhibition

Opening Night

Friday 24th January 2025 @ 7pm

Open daily 10.30am to 4pm

Ends 4pm Sunday 2nd February

Guest Artist

David Carson



Shedwood Hall Main Road Tapawera



Tapawera Connect (TC) Charitable Trust Incorporated – 2024 Year in Review

In 2024, Tapawera Connect Charitable Trust made significant strides in supporting the community vision to become a more Caring and Resilient Community. During 2024 Tapawera Connect was in year 2 of the 5 year partnership for the Community Led Development Program (CLDP) initiated by the Department of Internal Affairs, which encourages community led initiatives aligned to the overall community vision.

There were many achievements that are highlighted below;

Tapawera Connect successfully secured funding from the Department of Internal Affairs and the Tasman District Council for a new community hub. This funding will play a crucial role in the development of a shared space for bringing into the community more access to services and supporting community wellbeing and general activities run by the community. Phoebe Quinlivan, Sam Batchelor, Nicola Carleton and Geoff Proffit were part of the broader Steering Group in 2024 and will continue to do so in 2025, engaging the community further in confirming a location and the design of the space.

The Community Plan was finalised, published and launched, providing a roadmap for Tapawera and the surrounding valleys. The plan has already begun to bear fruit, with several initiatives and projects now underway. These include:

- Bees Knees (Ana and Ainoa)
- Food Resilience Group (Gavin and Heather)
- School and Community Gardens (Sabine Reinert and Sarah Coard)
- Shedwood Bush (Martin Bonny and Mark Soper)
- River bird project (Kate Radlof)
- Tapawera Kai Support (Judy Benjamin)
- Tapawera Kindergarten Quiz Night (Gina)
- Women's Paint and Sip Evening (Shania McKenzie)
- Fruit Tree Planting (TDC Community Grant and support from Golden Bush Garden Club)
- Tapawera Market (Amanda Beer)
- Connectivity project (Mark Drake)
- Backyard Trapping (Predator Free NZ / MCC)
- Tasman Transport Trust
- Tapawera School Pool (Sarah Coard / Judy Benjamin / Amanda Beer)

Nicola Allan was supporting these projects with partners mentioned above during 2024 and regretfully will be leaving her role later this month. Tapawera Connect is pleased to

announce that Della Webby will be succeeding Nicola and there is currently recruitment activity for another Community Led Development Programme (CLDP) Connector to join Della and continue progress with the community plan and CLDP projects within the community.

Under Nicola's lead, Tapawera Connect has continued to provide and support workshops within the community in support of the Community Vision, for 2024 these included:

- Fermenting Food (Sally Rees)
- Three Steps for Life (St John)
- Welcoming Communities Workshop (TDC)
- QiGong Workshop (Ana Aceves)

Tapawera Connect's Senior's support has continued with a range of programs run exceptionally well by Janine Leeden. These include monthly Tea and Talk gatherings, weekly Sit and Be Fit exercise classes, and monthly Welby Talking Cafe events, with the latter offering both social connection and health-focused support for all ages. Additionally, the collaboration with the Digi Drop-In team from the Tasman District Council Library has helped locals build digital literacy, ensuring they stay connected in an increasingly digital world.

The Tapawera Connect Rural Mums Group was led by Tamara Eggers and Abby Nott for the majority of 2024, they hosted a variety of family-oriented events, including a fun-filled family day, weekly support gatherings, and facilitated opportunities for young Mums to nurture themselves with self-care. These activities provided much-needed opportunities for socialising, emotional wellbeing and connection within the community.

For the younger generation, Karla Te Tau, Temika Amstad, Naralee Jelinek and Geinty Wells for the beginning of 2024 successfully organised fortnightly outings for the youth group, featuring activities like roller skating, waka ama and a visit to the Nelson Light Festival. A highlight for the youth was the YouThrive Wellness event, where local practitioners, including a nutritionist, yoga teacher, meditation instructor, and Jujutsu expert, contributed their expertise to share their knowledge of self-care with the youth. Josie Orr and Leigh Davis have already been in planning mode during 2024 for 2025 activities and are excited to recommence the Youth Group.

The Emergency Preparedness Plan was developed for Tapawera in 2024 in conjunction with key community members and the Tasman District Council. Several Welfare Officers were trained within the community who now know how to support families in need during an Emergency. This work will continue in 2025, with more training and an opportunity to simulate a natural disaster to ensure readiness for such an event.

Fundraising Volunteers Needed!

Together, we can build a community hub that will bring us closer than ever!

We are looking for enthusiastic fundraising volunteers to be part of a project that will benefit everyone in our community.

Volunteers can give as much or as little time as they wish. Tasks range from:

- brainstorming fundraising and sponsorship recognition ideas,
- selling raffle tickets
- helping with events.

The fundraising team meets monthly or fortnightly as required on a weekday evening.

Interested in helping? Get in touch with:

Della Webby, Hub Fundraising Coordinator
Phone: 027 479 4420, della.webby@gmail.com



Qigong with Ali: Yuan Gong methods

ONE DAY WORKSHOP AT THELMA HOUSE

First Method: Gathering Qi (Tian Yuan)

This method involves the coordinated use of mind and body to release and unblock tensions while gathering in new, fresh energy.

Physical Aspect: A series of symmetrical, flowing movements.

Benefits:

- Increases energy
- Reduces stress and tension, especially in the neck and shoulders
- Begins to nourish the organs in the body
- Calms the mind

Second Method: Nourishing Qi (Di Yuan)

This method uses standing postures and breathing directed to qi storage areas (Dantians) to nourish the body. It directs the mind to a calm, relaxed, and natural state.

Benefits:

- Increases energy
- Strengthens the body at the muscular-skeletal level
- Calms and clears the mind

Morning tea will be provided, byo lunch.

SATURDAY 22th February, 10am to 3pm
Cost: \$30 per person. Limited Spaces Available!

Location: Thelma House. 434 Upper Stanley Brook Rd.
To book go to: thelmahouse.nz



YUAN
QIGONG



Teacher: Alison Kay

This workshop is supported by Tapawera Connect and the CLD Program





Tapawera Connect (TC) Charitable Trust Incorporated – 2024 Year in Review cont.

At the end of 2024 Tapawera Connect took the opportunity to review and refine our structure to put us in a stronger position to strengthen our work in 2025. We now have a role focussed on Communications within the community and are pleased that Phoebe Quinlivan will continue to work for Tapawera Connect in this new position of Communications and Marketing Coordinator. We have started the year recruiting for an Operations Manager who will lead the team in support of the work for the community.

Throughout 2024, Tapawera Connect Charitable Trust, in collaboration with many others in the community, has made significant progress towards our shared community vision and towards realising goals from our Community Plan. Looking ahead, with a stronger organisational structure TC is looking forward to engaging further with the community to continue to support the journey towards our shared vision of being a 'Caring and Resilient Community'.

Senior's Snippets with Janine Leeden, 0277525975

Hi everyone and Happy New Year! Welcome to February already. Christmas came and went pretty quickly at our house and I'm already starting to think that while I was too late to decorate for last year, maybe I need to start getting better organised now so the house looks and feels more festive by December. How did you go with your traditional Christmas card list? Have you whittled it down to just those who also send you one; or send a joint one to be passed around; or forgot about it altogether and plan on a group email newsletter filling in the friends and family far away all about the previous 12 months?

Hopefully this month we'll be able to get out of the winter clobber and feel more of the warmth of summer on our skin. Don't get me wrong, after the long dry drought of last summer, all this rain is a real blessing.

We've already had our first **WELLBY TALKING CAFE (which is for ALL community members)** at the new venue – the School / Community Library. What a fabulous morning we had with lots of new residents, and some who have just been putting off trying it out, as well as a few of our regulars! There was lots of interesting conversation and some great new connections made. Dinkie Phillips was able to answer some questions on the history of how the Community Library started in Tapawera so many years ago, and grew from very humble beginnings, into a facility we can be proud of! Another thing that came out of the

morning is the **NEED TO FIND A LOCAL PIANO TEACHER** who might come and teach individual students at the school, or such. If you can help, either contact myself on 0277525975 or leave a message for Sabine at the school on 03-5224337.

Our next **WELLBY TALKING CAFE** will be back at the School / Community Library on **Tuesday, 11th February, 10-11.30am**. Come along to **avoid FOMO** (Fear Of Missing Out – a new syndrome apparently, no doubt thanks to social media). A koha will help with morning tea costs. Kelly will be back in the library after the holidays to help you with membership and sorting any book requests you might have. See you there!

Tea and Talk will be at the Memorial Hall on Tuesday, 25th February 2025, from 10-11.30am. \$3 covers morning tea and a great time of catching up.

Sit and Be Fit will continue every Friday morning at 10-11am with a cuppa, chat and opportunity to join in our current favourite game – Mexican Trains – throughout the summer. We meet at St Peter's Church on the Main Road. Great value for \$3 for the morning!

*'If you don't have wrinkles,
you haven't laughed enough!'*

Phyllis Diller

Tapawera & Valleys Historical Society Inc

On Sunday 16 February we will take a day trip to Twynham to meet with Lloyd Higgins to learn the history of the area. Anyone who is interested is welcome to come along. We will meet at the Kohatu Memorial at 10am and will need to travel in 4 wheel drive vehicles. Bring your lunch, drinks and a chair.

Please let us know if you intend to come.

To reply or for any enquiries contact Barbara or Roger ph 5224317 or barbaraacarleton@gmail.com



Connecting Tapawera

Affordable and accessible public transport provided by the Nelson Tasman Community Transport Trust with a team of friendly volunteer drivers



TUESDAY		THURSDAY	
Tapawera to Richmond		Tapawera to Motueka	
Departing	Route Stops	Departing	Route Stops
9:30 AM	Tapawera Community Centre	9:30 AM	Tapawera Community Centre
9:40 AM	Kohatu Flat Rock Cafe	9:45 AM	Woodstock (by bridge)
10:00 AM	Wakefield Village Hall	9:55 AM	Ngātīmoti School
10:20 AM	Richmond Mall / E-bus Interchange	10:10 AM	Motueka Airport/College Street
10:30 AM	Richmond Aquatic Centre	10:30 AM	Motueka isite / Library
Richmond to Tapawera		Motueka to Tapawera	
1:45 PM	Richmond Aquatic Centre (if booked)	1:00 PM	Motueka isite / Library
2:00 PM	Richmond E-bus Interchange	1:15 PM	Motueka Airport/College Street
2:20 PM	Wakefield Village Hall (if booked)	1:25 PM	Ngātīmoti School
2:40 PM	Quinney's Bush Camp (if booked)	1:40 PM	Woodstock (by bridge)
2:50 PM	Kohatu Flat Rock Cafe		
3:00 PM	Tapawera Community Centre	2:00 PM	Tapawera Community Centre

**BOOK TO CONFIRM YOUR SEAT OR
FROM 1 DECEMBER 2024 BRING
\$6 TO PAY THE DRIVER YOUR FARE**
Book on PH: 03 528 6543



Nelson Tasman Community Transport Trust aims to create sustainable transport options for local communities and is supported by Tasman District Council and the Lotteries Commission

www.ntctt.org.nz

Effective from 1 December 2024



More Flexible Community Transport

Have you noticed the community transport timetable to help you move between:

- Tapawera and Richmond (via Kohatu, Wakefield) on Tuesdays departing Tapawera at 9:30am and returning from Richmond at 2pm
- Tapawera and Motueka (via Woodstock, Ngātimoti, Motueka Airport) on Thursdays departing Tapawera at 9:30am and returning from Motueka at 1pm

Fares are \$6 each way and can be paid to the driver or book and confirm your seat at the Motueka isite by phoning 03 528 6543. Departure is from the Community Centre at 9.30am. This is part of a trial up to 31 March 2025. The option to pay the driver and not book, will be reviewed at the end of February 2025. We need you to use the transport services for them to continue to operate. Please help us spread the word to your friends and neighbours.

The bus can stop anywhere along the route, by prior arrangement (booking), where it is safe to do so.

Full details of bus stops and times are available on the Nelson Tasman Community Transport Trust (NTCTT) website www.ntctt.org.nz and elsewhere in the Informer.

The Trust is dedicated to making a difference in keeping communities connected and reducing carbon emissions and congestion on our roads.

These affordable and accessible community transport services are provided by the Nelson Tasman Community Transport Trust (NTCTT), driven by a friendly group of volunteer drivers that live in our community (see photo below).



Group Trips

When not on scheduled services these vehicles are available for community group hire. We can transport up to five (5) passengers for your outing or adventure with our vehicle based in Tapawera. We also have a comfortable van that can accommodate up to 11 passengers. The van also has a bike rack.

January & February 2025 - Free small coffee

Fancy a free coffee over January and February 2025? The Richmond Mall is kindly offering all passengers using the NTCTT services to Richmond, over January and February 2025, a free small coffee. Speak to your driver for details on how to redeem this.

The Tuesday service to Richmond can take you all the way to the Richmond Aquatic Centre www.clmnz.co.nz

We look forward to having you travel with us soon.



Tapawera Netball Club February News

Man has the Christmas/New Year chaos gone fast this year, or is it just me? It's starting to get exciting here at Tapawera Netball as we start prepping for the up and coming season.

Are you wanting something for you again, to make some new friends or just get fit while having fun or are you wanting to play a competitive sport again? Why not head down to the courts on Wednesday 12th February at 6:30pm for our season trials. The more the merrier, if you haven't played in years don't worry, we all start back somewhere!

Do you have a child attending school? We also have school aged trials happening on Wednesday 5th March, straight after school at 3:30pm.

We can't wait to see you there! If you are wanting to play but can't make trials please send some information about your skills and what position you play to tapaweranetballclub1988@gmail.com.

We hope you all have had a fun filled and relaxing Christmas and New Year from the Tapawera Netball Committee.

Lissie Anglesey
Club Secretary
tapaweranetballclub1988@gmail.com



Survivors and Thrivers Support Group Tapawera

This is a support group for individuals who are living with or have experienced cancer, as well as for those supporting loved ones with cancer. We meet every two months.

For more information or to register please contact maureen.urwin@cancerelson.org.nz
Ph 03 528 7669

The Lady Tradie

Has your husband got a **round**



Spring has sprung
and the grass has riz !
Do you wonder where a handyman is ?
Can't get one ?

Then call " Jen the Lady Tradie "

for all your outside spring clean-up jobs

* Gutters full of leaves;

* Lawns that are starting to bolt;

* Waterblasting those slippery paths
and all that spring growth that just might get away on you.

* **Local Person** * **Referees Available** *

Consideration & discount shown towards Senior Citizens

FREE QUOTES

Contact Jennifer

Phone or text: **027 544 2663**

After hours/leave a message: **03 522 4453**

Email enquiries to: jentheladytradie@gmail.com



Servicing Tapawera, Kohatu, Tadmor, Motueka Valley and surrounding areas daily

"If its urgent, we'll be there!"

**Plumbing - Gasfitting - Drainage
Blocked Drains - Leaky taps...
Spouting- Hot water - Wastewater
system servicing**

Phone, email or Facebook Messenger us to book your Job or Free Quote

Phone - 03 543 8090

Email - info@tuffnell.co.nz

"We thank all our clients for their continued support"

Harcourts Rural

PLATINUM BLUE LIMITED LICENSED AGENT REAA 2008



124 Ricketts Road, Tadmor

Price By Negotiation

Tired of the daily grind and looking for a bolt hole to get away and unwind then this 29.3 HA already on it's own title is just what you are looking for. At the base of the block you'll find a large flat section of grazing land, dotted with eucalyptus. There are multiple potential building sites and options to purchase an additional 26 HA (subject to title) of adjoining grazing hill country and mature trees.



390 Tadmor Valley Road, Tapawera

\$4,900,000

Plus GST (if any)

It is rare for hop properties of this calibre to come to market, especially one of this scale and with such comprehensive facilities. The 18.6 HA hop garden features a diverse range of varieties, a fully customized post harvest facility, featuring a state of the art hop picking shed, along side a four level stacking kiln. The total property spans 32.9HA with potential for significant growth.

Team

TOBY RANDALL

027 233 9170 | toby.randall@harcourts.co.nz



Leigh and I are very excited to announce that we are taking on the roles of Tapawera Youth Coordinators, building on the awesome work that our predecessors started. Tapawera Rangatahi Explorers will be back up and running from Term 1 2025. We'll be holding fortnightly events on Fridays for youth in yr 7 and up. Activities will range from local based activities to exploring further afield - with lots of new and exciting things in the pipeline. If you have any great ideas or would like to offer

your services for our awesome youth to get involved in, or if you're interested in helping out and volunteering at any of our events please don't hesitate to get in touch, we'd love to hear from you!

Keep up to date with what's happening - make sure to follow us on FB 'Rangatahi Explorers' and Instagram - rangatahi.explorers

Contact Josie 027 612 5813, josiegardnerorr@gmail.com

Or Leigh 027 206 0804



Hello Everyone!
My name is Leigh Davis and I'm a proud father of two amazing kids. I'm excited to be part of this youth group and to meet all of you. Together, we'll not only have fun and create positive memories, but we'll also challenge ourselves, and grow as individuals. This is a space where we can support each other, seek new opportunities, and become the best versions of ourselves in a safe, entertaining, and uplifting environment. Looking forward to an awesome time with all of you!
Leigh Davis



Hi, my name is Josie Orr - many of you will recognise me as I have been teaching at Tapawera since 2020. I am very excited to be taking on this new role as Youth Coordinator. I love getting out and about with students, seeing them thrive and challenge themselves in new environments as well as having fun and exploring all the great activities our beautiful region has to offer! I can't wait to get to know everyone and get stuck into some awesome activities in 2025!
Josie Orr


Yoga with Josie - Tapawera

Wednesdays 6-7pm
 Tapawera School Music Room
 School Term Time Only
 Term 1: 5th Feb.- 9th April

All Abilities Welcome
 BYO Mat

\$12 per class or \$100 for the term
 (10 classes)
 50% discount for students

Contact Josie: 027 612 5813

Tasman Bay Chiropractic
 Keeping you in the game since 2002

Referrals, families and all new clients welcome

Visit our website or call for more information



03 544 4554 Monday-Saturday
 tasmanbaychiropractic.co.nz

Find us on  

Tapawera Community Craft and Market Day

Last Sunday of the month






Across the road from 4 Square on the village green, 10am to 2pm.

Bring along your crafts/produce /unwanted items to sell.





Enquiries to Amanda Beer on FB messenger or via the Tapawera and Surrounding Valleys FB page.



From the Principal's Desk

Tēnā koutou e te Whānau ki te Kura o Tapawera

It is time to celebrate some of the achievements of 2024 (in no particular order):

- Refreshed paintwork throughout the whole school
- New kapa haka uniforms funded by the Friends of the School
- Improved writing achievement data from years 0-10
- Two whānau hui to explore success for our Māori students
- Teachers participating in a wide range of professional learning
- Good result at the Area School Tournament
- Winning the Year 9-10 Area School Tournament
- Continual development of our termly mihi whakatau (welcoming new students and whānau)
- Upgrade started in the secondary school
- 40 new computers in the secondary school
- Winning Year 7-8 volleyball
- The development of the school/community garden
- Developing connections with Tapawera Connect

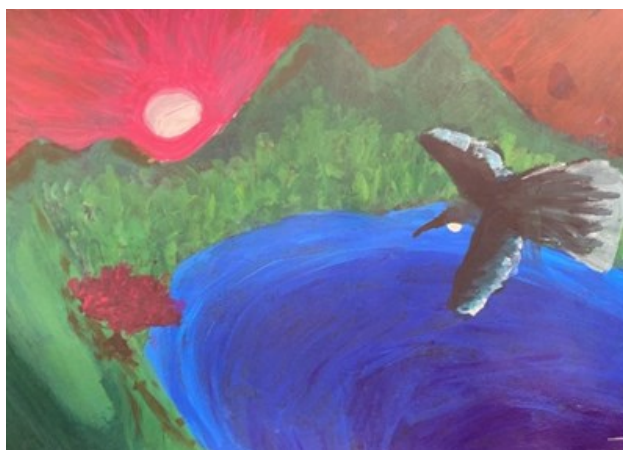
This is only naming a few of the great things happening in our kura.

We hope you have a great summer break and get some relaxation before the new school year. We will see everyone back on Tuesday 4th February 2025.

Stationery will be available from the school office from 20 Jan – 31 Jan, 9am – 3pm

Congratulations to our Yr7-8 Volleyball team

Congratulations to our year 7-8 Volleyball team as they WON the Motueka Volleyball Spikers 6 aside tournament in Motueka. Awesome work team!! A huge thanks to Stephen Haunch's commitment to the team and getting them there every fortnight.



Artists: Lachie Barker and Harry Butcher

Room 7 making pickles



Providing gentle guidance when you need it most.



Simplicity Funerals

Simply respectful. Simply affordable.



Anna Loach
Manager / Funeral Director
Dip FD Reg. FDANZ

**NELSON & TASMAN WIDE,
WE'RE PART OF YOUR COMMUNITY**

Phone 03 929 5145 | 276b Queen Street, Richmond
nelson.simplicity.co.nz



Big Day Out 2024

On Monday 9th December all of our year 0-10 students, school staff and some families went to Quinney's Bush for a Big Day Out. In groups, students enjoyed a range of activities including volleyball & badminton, swimming, obstacle course, water slide and the animal farm. It was a lovely day where students, staff and families were able to come together, have some fun and celebrate successes from the year.

We would like to acknowledge:



Sue and Jeff Wadsworth for the use of their buses free of charge getting us there and back.

Mark & the Team at Quinney's for offering us discounted entry fees for the day.

Our Tapawera School Board of Trustees for covering the remainder of the cost of the Trip.



TAPAWERA ELECTRICAL

Tony Stephens

Registered Electrician

Ph/fax 5224257
0276249489
Renae 0275616510

All electrical needs
Domestic & Rural

Wiring, faults, some home appliance repairs
New heat pump installations



Free Quotes
Competitively priced

HANDYMAN

- * General property maintenance
- * Clean out/tidy up
- * Water blasting
- * Gardening
- * Chain sawing
- * Repairs
- * Demolition
- * Any farm work

Fair hourly rate. Honest and hard working.

Local references available.

Please enquire to Jeremy Ellis (03) 522 4460

WADSWORTH MOTORS LTD.

- Coach Charters & Tours
- Mini Bus Hire.
- School Transport
- Professional friendly drivers
- Members of the Bus & Coach Association

Over 100
Years of
Service

wadsworthmotors@xtra.co.nz
100 Main Rd, Tapawera
www.wadsworthmotors.co.nz

027 4873167



COME TO A TALKING CAFÉ

Connect with your community



Talking Cafés are an opportunity to meet people, make new connections and learn more about your community.

Pop in for a quick cuppa, or stay for a longer conversation with friendly people. All welcome, no bookings required.

Upcoming Tapawera Talking Cafés
New location!!

Tapawera School Community Library

Tuesday 11th February, 10.00-11.30am

Tuesday 11th March, 10.00-11.30am

Tuesday 8th April, 10.00-11.30am

For more details:
wellby.org.nz
or phone (03) 546 7681

wellby

Gillespie—1

MAF approved

Home kill butchery



03 547 7746

Butcher / journeyman

Specializing in quality small goods

Factory: 111 Bolt Rd, Nelson

Tapawera Talking Walking Group



Ollie the Health Coach at Wakefield Health Centre is walking into the Tapawera Neighborhood. Lets start the New Year positive and with good intentions!

When/Where:

This is a FREE 6wk program starting the 10th February and finishing on the 17th March

Monday 10.30am - 11.45am at the Community Hub across from the Four Square

Through outdoor physical activity we are fostering community & connection

This is suitable for individuals who can walk 30 minutes without assistance



Guest speakers from Nelson Bays Primary Health:

Dietitian or Community Education Coordinator

Green Prescription

Health Improvement Practitioner

Alcohol and Other Drugs clinician

Kaiaatawhai service

Mental Health service

Come along rain or shine! We can combine a mix of walking and fun exercises to improve fitness, strength & co-ordination, while also having a laugh and social interaction. Afterwards, join me for a cup of tea!

Open to anyone registered at the Wakefield Health Centre

To enroll, please contact:

Wakefield Health Centre: 03 541 8911 or Health Coach: 027 317 5879

NZ YOUNG FARMERS

TASMAN VALLEY YOUNG FARMERS & TAPAWERA RUGBY CLUB PRESENT

BARK UP

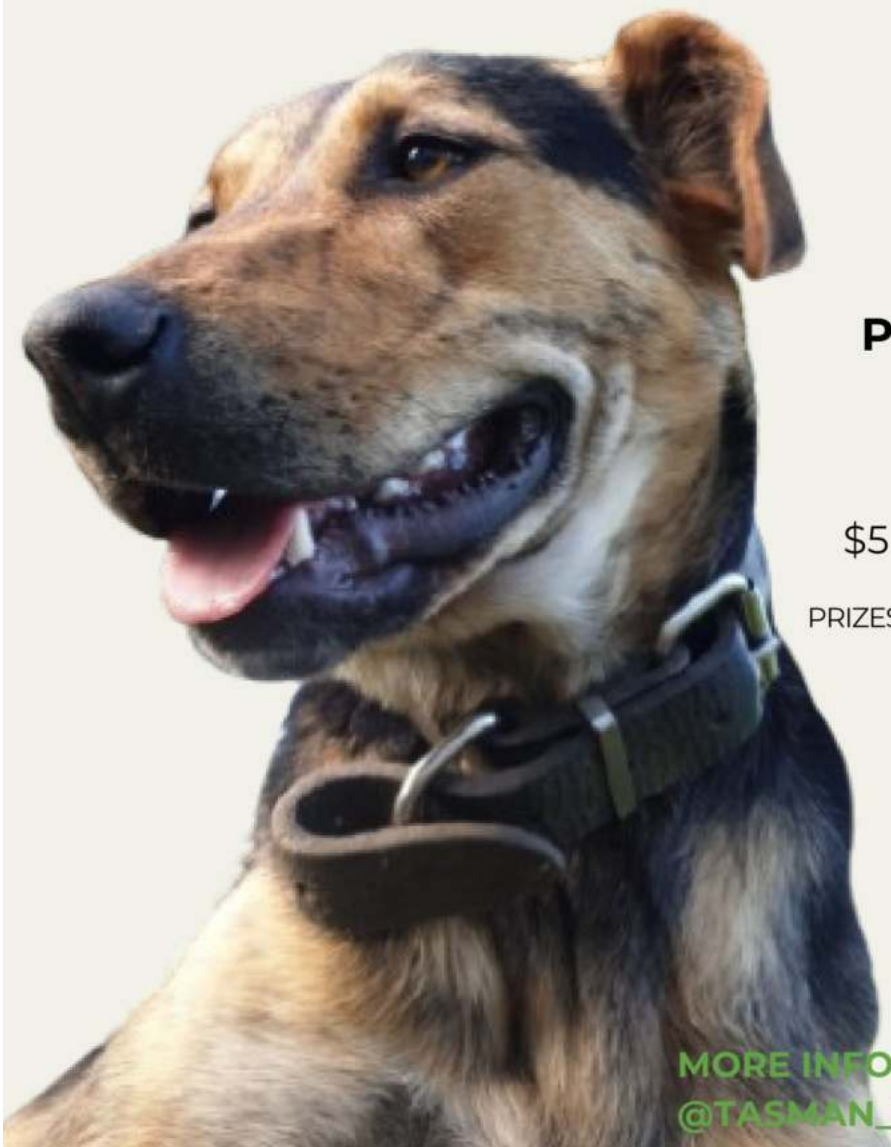
MARCH 1 2025 - TAPAWERA RUGBY CLUB

**REGISTRATION AT 4PM
FIRST BARK AT 5PM**

**OPEN DOG
OPEN FEMALE
PUPS UNDER 1 YEAR
PET BARK**

**\$10 FOR FIRST DOG
\$5 PER ADDITIONAL DOG**

**PRIZES TO BE WON FOR THE BEST BARK
BAR & CASH BBQ**



**MORE INFO ON INSTAGRAM
[@TASMAN_VALLEY YOUNG FARMERS](#)**

Need a Hand with your Tech?

Struggling with your smartphone, tablet or laptop? Join us for a Digi Drop-in at the Tapawera Community Library! Friendly library staff will help you troubleshoot and get the most out of your digital devices.

Learn how to access eBooks, eAudio, eMagazines, and eNewspapers, get creative with Creativebug or watch online for free – all available with your library card.

We're at the Community Library once a month – come on down and see us! Bring your device, and let's make tech easier together!



Tasman District Libraries

Digi Drop-In Tapawera 2025 Dates!

11.00am – 1.00pm

Find us at the Tapawera Community Library!

Tuesday, 11th February

Tuesday, 11th March

Tuesday, 8th April

Tuesday, 13th May

Tuesday, 10th June

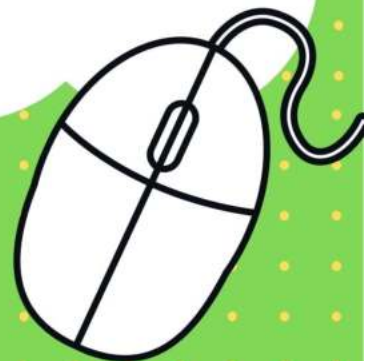
Tuesday, 8th July

Tuesday, 12th August

Tuesday, 9th September

Tuesday, 14th October

Tuesday, 11th November



Book Discussion Group

Meet: 4th Thursday in month, 10am
 Contact: Adrienne Baigent 021408892

Federated Farmers

Contact: Harry Matthews - Field Rep -
 0275078901

Golden Bush Garden Club

Meet: 2nd Thursday of month
 Contact: President, Linda Milson
 02102510945, or Shirley Percy 5224924

Golf

Meet: every Sunday, Ladies 9 hole
 every Tuesday
 Contact: Gary Oldham ph. 0278080578

Historical Society

Contact: Barbara Carleton ph. 5224317

Informer

PO Box 15 Tapawera
 Email tapawerainformers@gmail.com

Justice of The Peace

Peter Phillips ph. 5224313
 John Ellis ph. 021 522429
 Brent Hodgkinson ph. 5224381
 Susan Fenemor ph. 0275224009 (text
 during school hours)

MENZSHED

Contact: John Wilmshurst ph. 5224616

Netball

Contact: Susan Fenemor ph.
 0275224009 (text during school hours)

Ramblers

Meet: each month
 Contact: Shirley Percy ph. 5224924

Shedwood Hall bookings

Contact: Tania Higgins ph. 5224587

St Andrews Church Stanley Brook

Services every Sunday. Cup of tea
 afterwards.
 Contact: Lee Winter ph. 5224160

St John – Tapawera

For emergencies Dial 111,
 Email info@stjohn.org.nz

Tapawera & Dist. Community Church

St. Peter's Tapawera: no services at
 present
 Contact: Church office 03 541 8883
wakefieldanglican.xtra.co.nz
 Urgent enquiries to Andrea 0024169386

Tapawera & Dist. Community Council

Meetings: 3rd Tuesday of month,
 7pm Tapawera Community Centre,
 email: TapaweraTDCC@gmail.com

Tapawera Community Centre

Email: Nicola Allan
nicolaallan434@gmail.com or
TapaweraTDCC@gmail.com

Tapawera Connect

Contact: Phoebe Quinlivan ph. 021 211
 6730 or 522 4929, email:
tapaweraconnect@gmail.com

Tapawera Creative Fibre

Meet: every Wednesdays, 10am-2pm,
 Memorial Hall
 Contact: Dallas Robinson ph. 5224984

Tapawera Food Bank

Contact: Suzzi Lankshear ph.
 0277491063

Tapawera Jujutsu Club

Contact: Tony Hammersley ph. 5224609

Tapawera Music/Country Music Club

Meet: Alternate Sundays, Tapawera
 Hotel 7:30pm
 Contact: Elaine Douglas ph. 5418612

Tapawera Op Shop

Open: Wed 10am-3pm
 Contact: Amanda Beer ph. 0278024612

Tapawera Playcentre

Meet: Mon & Thur, 10am -12:30pm
 Memorial Hall ph. 5224456

Tapawera Rugby Football Club

Bookings: ph. Judy Benjamin 5224445

Tapawera Sport & Recreation Society

Contact: Judy Benjamin ph. 5224445

Tapawera Volunteer Fire Brigade

Contact: Dean Millar Chief ph.
 0279651399; Ted Oakly Deputy Chief
 ph. 0210704033

TAS / Community Library

Mon-Fri 10:30am-1:30pm. Contact:
 Lareen Bonnington ph. 5224149
 Library ph. 5224337/ext. 213

TESSI

Contact: Bruce Whyte ph. 5224550

Toy Library

Open Monday or via arrangement:10:30
 -11:30am contact Jan Barker:
 0273915424 or 5524984

Visual Arts Society Tapawera

Contact: Dallas Robinson ph. 5224984

**What's on
February**

- 24 Jan-2 Feb VAST Art Exhibition,
Shedwood Hall, 10:30am-4pm
- 11 Tapawera Talking Café, 10-
11:30am, School/Community
Library
- 11 Digi Drop-in Session, School/
Community Library, 11am-1pm
- 12 Netball Club trials, 6.30pm at
School courts
- 13 Garden Club, 11am, 27
Umakuri Road, Riwaka
- 16 Historical Society trip to
Twynham, meet at Kohatu
Memorial at 10am
- 18 TDCC monthly meeting,
Community Centre, 7pm
- 20 Articles for Informer close 5pm
- 22 Qigong workshop, Thelma
House, 10am-3pm
- 23 Craft and Market Day, Village
Green, 10am-2pm
- 25 Tea and Talk, Memorial Hall,
10:00am - 11:30am

**GP & Nurse at
Tapawera Clinic**

(during school term time):

GP clinics – Mondays
 9am – 12 midday

Nurse clinic – alternate
 Tuesday mornings - phone
 541 8911 for dates

Wakefield Police

Constable Jamie White –
jamie.white2@police.govt.nz
 Constable Matthew Berquist –
matthew.berquist@police.govt.nz
 Non Urgent (CRL) – Call 105
 Happening Now – Call 111