

Informer, PO Box 15, Tapawera
 email tapawerainformergmail.com

Cheers for Volunteers!!

I've lived in the Tapawera region for nearly 30 years but have only recently had the pleasure of meeting many local people. And that's through my involvement in volunteer activities driven by the recent community plan. Volunteering's opened several doors for me, not the least of which is knowing more people (old and young) to say gidday to when in Tapawera, and feeling the warmth when they remember me. And also, of course, enjoying the social benefits of working alongside others in projects like bringing the school/community garden to life again. I spent an afternoon there recently helping prepare a garden bed for our 'start a veg garden from scratch' workshop. I left feeling great, full of joy for my effort and the result, and it emphasised again that volunteering is satisfying involvement for both me and the projects I contribute to.

Many think of volunteering as a way to help others - and while that's true, it's also a great way to improve your own health. Research shows that volunteering is one way to make yourself and your community healthier. Some benefits described on research-driven websites are broader social networks, enhanced mental wellbeing, higher happiness levels, and longer life - who wouldn't want these? And remember, a volunteer network will be invaluable if Tapawera ever experiences a natural disaster - that's everyone's health.

Nicola Allan (long-time local volunteer) commented 'Volunteering comes in many shapes and forms and any time given is always appreciated - one hour or one day. You might volunteer to look after someone's children so they can give their time to a project/cause. You may not be able to make the working bee, but you might help with some baking. Even around Tapawera and surrounding valleys, a 'keep Tapawera beautiful' mindset is great - pick up rubbish on your road, for example.'

Some of the Tapawera groups that appreciate volunteers are listed on the back page of the Informer. Others include School/community garden (Sabine Reinert/Gavin Scoble); Welby (Janine Leeden); St John/First Response (Jill Bonny); Gateway Garden, Native propagation group (Kate Radloff); Shedwood Bush Betterers (Martin Bonny); Hub Fundraising team (Phoebe Quinlivan); Sport and Rec (Judy Benjamin); Friends of the School (Judy Benjamin).

Heather Spence (Community Plan Food Resilience team)



Volunteers Charleigh, Kenzie and Sorayah doing a great job at a school & community garden working bee

2025 Advertising Rates for the Informer

After many many years of advertising rates for the Informer remaining unchanged prior to this year, TDCC has agreed to increase rates in 2025 to cover increasing printing costs, with a 20% discount for paying annually. The rates for 2025 will be:

	Pay monthly/ per issue	Pay annually/ 11 issues
1/4 page advert	\$39	\$343
1/2 page advert	\$54	\$475
Full page advert	\$78	\$686

WADSWORTH MOTORS LTD.

- Coach Charters & Tours
- Mini Bus Hire.
- School Transport
- Professional friendly drivers
- Members of the Bus & Coach Association

Over 100
Years of
Service

wadsworthmotors@extra.co.nz
100 Main Rd, Tapawera
www.wadsworthmotors.co.nz

027 4873167



RURAL POST, RD 2 Wakefield

Contact Nick & Jackie Costley for all your RD 2 Wakefield postal needs.

Including prepaid envelopes, stamps, courier items and local freight from Wakefield, Dovedale and Tapawera. Prescriptions from Wakefield.

Phone 0275418581

Mark & Tania Gill
T/A MTJ Transport
RD2, Nelson
NZ Post Rural Contractors
Servicing
Motupiko-Korere-Kikiwa-Tophouse-St Arnaud-Glenhope

For all your Postage, Milk & Courier Freight
Operating 3 Days Weekly
(Monday-Wednesday-Friday)
Departing Nelson 8.00am
Phone 546 6295

Material & adverts for Informer

All material is to be sent to either:

Informer, PO Box 15, Tapawera, 7055
or email- tapawerainformergmail.com

To be received by 5pm
20th of the Month

If emailing a word document please send in Word as an attachment.

If sending an advert please save as a jpeg before sending.

Please check your emails to see your article/advert has been received as sometimes there needs to be alterations.

Advertising rates for Informer

Standard ad	Pay monthly	Pay annually
1/4 page advert	\$39	\$343
1/2 page advert	\$54	\$475
Full page advert	\$78	\$686

Adverts that require editing may cost extra

The Informer is produced and published by the Tapawera and Districts Community Council, PO Box 15, Tapawera, 7055;
email: tapawerainformergmail.com
Circulation 635
Editor: Gill Hammersley
The Editor and Publisher try to ensure information published is truthful

and accurate, but do not accept any responsibility for errors or omissions, or for any consequences of readers' relying on the information published. Opinions expressed by contributors may or may not be endorsed by the Editor or Publisher.
All material submitted, whether editorial or advertising, is accepted at the discretion of the Editor and the Publisher.

Pride in Our Town

Introducing Jeff Lukey, a person passionate about many things and still questioning some of the answers some of the so called experts have given.

Jeff has worked on the family farm with Dad, tried his hand at dairying on the Waimea Plains, worked for Nelson Honey, and during the off season, cut and tied berries.

Two of his passions really started out as school projects at Tapawera DHS. They were a class gardening competition and the lifecycle of the honey bee on the display table. He won the vege garden section on his first attempt but was disappointed not to win with his rockery entry, however this did not deter him from being a gardener.

Later, while working for Waimea Estates, he got permission to tidy up around his accommodation and the owners were suitably impressed. This led to five years' work continuing the development already started in their garden.

How did beekeeping develop? This started with a class project on the lifecycle of the bee and collecting comb and honey from the wild hives on the farm and writing the story for the display table. Back at home on the farm, there were a lot of wild beehives in the native trees. He knew of at least 180 sites! These bees were ferocious defenders of their hives, and it was a painful battle to win their honey. Since the arrival of the varroa mite, all of these hives and colonies have been wiped out. Today's strain of bees are much more user friendly.

In 1979, a friend placed an ad in the Guardian Beekeepers magazine leading to an initial 6 month work visa in Canada which was then extended to fifteen months. This was an intense season as the harvesting period is short lived. The weather in northern Alberta is similar to Dunedin during the summer, but -40 degrees centigrade during winter is not uncommon. A disappointment of the Canadian trip was not getting a white Christmas.

Jeff worked for Len Hunt in Ashburton for four years while building up his own hives. And then in 1995, he got serious about beekeeping locally.

Since purchasing his property in the Sherry Valley, his free style landscaping has run amok. It all started with a traditional kidney shaped rockery. At the completion of this, his inner self said 'You're not a follower, do something magical', hence the volcano, hot tub, mountains, glacial gully lakes and gardens. Jeff has also added a native bush block with walkways. This area contains some very rare

plants. Alongside this work, Jeff has continued developing his honey business.



Thank you Jeff for your hospitality and insight into your life.

Written by Geoff Proffit

Tapawera Creative Fibre



The end of the year is rapidly approaching, I am asking myself where the time has gone!

At Creative Fibre members are finishing up their projects started through the year and/or continuing on other work started.

Some members have been busy making charity quilts while others have been busy supporting local Fairs and Galas with handmade craft items to sell.

Coming up we have a Nelson Creative Fibre day of rest and relaxation, which timewise will be done and dusted by the time the Informer is issued.

Our final day in December is at Vicky's lovely home on the 11th where we will meet up to share lunch, do some crafting and then take a break until the New Year.

Wishing you all a safe and happy festive season with moments to share with those we love and to remember those no longer with us.

Stay safe folks. See you in 2025

Cheers Dallas



Visual Arts Society of Tapawera

V. A. S. T. ART EXHIBITION 2025

Shedwood Hall. Main Road Tapawera. Opening night Fri 24th Jan 7pm

Open daily 10am – 4:30pm.

V.A.S.T Exhibition to showcase Artists of Tapawera in all Media

Conditions of Entry – Open to all media, (metal, wood, fibre, painting etc)

- ❖ School students free entry
- ❖ Entry limited to Residents in the 'Informer' area, ex Tapawera residents and Invited Artist(s).
- ❖ New & emerging Artists welcome, a membership fee of \$15 per year allows exhibiting
- ❖ Responsibility for the Artworks Insurance and protective wrapping lies with the Artist
- ❖ Artists need to be available for the roster while the exhibition is open (approx. one day)
- ❖ All items ready to display, and to be delivered to the Hall on Thursday 23rd Jan between 10am and 2pm. Works to be collected after 4:30pm Mon 3rd Feb
- ❖ Number of works may be limited due to area available.
- ❖ Additional artwork will not be allowed into the exhibition after opening unless prior arrangement has been made. Sold and uplifted artworks may be replaced.
- ❖ Commission rate on items sold is 10%
- ❖ **Please** include your artist profile, business cards and title cards for your work.

Please return Intent to Enter Form by January 13th 2025

Entry Forms can be sent to Dallas Robinson Box 50 Tapawera

Detach

Here.....

INTENT TO ENTER

Name **Signature**.....

Address

Phone **E Mail**

Number of Entries **Media**



Art & Craft Exhibition

Opening Night

Friday 24th January 2025 @ 7pm

Open daily 10.30am to 4pm

Ends 4pm Sunday 2nd February

Guest Artist

David Carson



Shedwood Hall Main Road Tapawera



"...for all creatures great & small..."

**Regular Tapawera visits
discounted mileage
T&Cs apply**

Ph 544 1200

info@tcvet.co.nz * www.tcvet.co.nz

**25 Edward Street, Wakefield
35 McGlashen Avenue, Richmond**

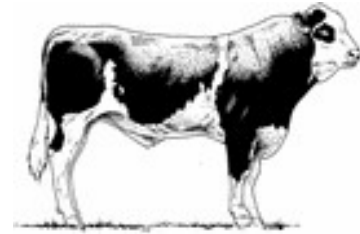


24 hour emergency vet

Gillespie—1

MAF approved

Home kill butchery



03 547 7746

Butcher / journeyman

Specializing in quality small goods

Factory: 111 Bolt Rd, Nelson

HANDYMAN

- * General property maintenance
- * Clean out/tidy up
- * Water blasting
- * Gardening
- * Chain sawing
- * Repairs
- * Demolition
- * Any farm work

Fair hourly rate. Honest and hard working.

Local references available.

Please enquire to Jeremy Ellis (03) 522 4460



**Servicing Tapawera, Kohatu,
Tadmor, Motueka Valley and
surrounding areas daily**

"If its urgent, we'll be there!"

**Plumbing - Gasfitting - Drainage
Blocked Drains - Leaky taps
Spouting - Hot water - Wastewater
system servicing**

Phone, email or Facebook Messenger
us to book your Job or Free Quote

Phone - 03 543 8090

Email - info@tuffnell.co.nz

***"We thank all our clients for their
continued support"***



From the Principal's Desk

Tēnā koutou e te Whānau ki te Kura o Tapawera

Secondary Property Upgrade

The Board and I are highly motivated to upgrade the secondary area of our school. We want this area to be a modern, innovative and desirable space for students and staff. Therefore, there is a five-year plan to upgrade the secondary area in three stages, with stage one starting during the Christmas holidays.

Due to a Ministry of Education (MOE) directive, this upgrade plan includes removing two buildings, the art room and the common room, and integrating these spaces into the main secondary block. According to the MOE calculations, these buildings are being removed because the school has more buildings than needed.

Stage 1 involves integrating the art room and common room into the current secondary area and some breakout/learning support spaces. We are working with the project manager and the architect to develop proposed designs. We will seek feedback from staff and students on the plans. We will share more details about this upgrade when it is available. These are exciting changes for our school and an excellent opportunity to create somewhere fantastic for our students and community.

Everyday Matters: Attendance

As you will be aware through the media, New Zealand has an attendance problem, and our government has an action plan to tackle this issue. This initiative aims to support schools, families and communities in promoting regular attendance and addressing the underlying factors contributing to absenteeism. As a school, we have an action plan to support improving our procedures, communication and engagement around attendance. One of our foci is to communicate with whānua with attendance information so there is a better understanding of attendance procedures, and we communicate regularly with whanau about student attendance.

Under our School policy...

A Justified Absence is due to a genuine reason, such as:

- Illness
- Medical appointments
- Family emergencies
- Bereavement

An Unjustified Absence occurs when a student is absent without a valid reason, such as:

- Holidaying during school time
- Staying home to avoid schoolwork
- Skipping school to socialise
- Going shopping / other appointments (not medical)

As parents and caregivers, you play a vital role in ensuring your child's

Please do your best to:

Ensure your child attends school every day unless they are genuinely unwell.

Contact the school if your child is absent, and provide a reason for their absence.

Work with the school to address any attendance issues.

By working together, we can ensure that all students have the opportunity to succeed.

Te Taihu U15 Māori Rugby Tournament

The Te Taihu U15 Māori Rugby Tournament was held in the school holidays. Bronco MacDonald and Riley Hook took part in this team. What a cool achievement.

Well done Riley and Bronco.



Nationals Cross Country

In the school holidays I went to Wellington to compete in the Nationals Cross Country. I was a part of a group of students who travelled to Wellington to represent Tasman at the Nationals. Out of the 44 students competing, individually I came 14th and as a Tasman group we came third and got a bronze medal. There was lots of practice that I did, doing 2km runs and lots of sprints up my driveway and the hills in the paddocks at home. This would not have been able to happen without all the fundraising my family helped me do and the support from Sport and Rec and Friends of the School. I thought the experience was very fun and a good challenge. If I made it through again in years to come, I would definitely participate again.

Ben Dixon

Junior TOSI in Culverden

Steve and Tegan took a group of 20 students (10 boys and 10 girls) from year 7-10 away to Culverden for the Junior TOSI. This is a mini TOSI tournament between Amuri, Collingwood, Murchison and Us. Our students worked hard, training every lunchtime for weeks in the lead up to this tournament putting in great effort so they were all prepared. It was very full on for 2 days as they played Netball, Football, Basketball, Volleyball, Mixed Badminton, Mixed Pickleball, Mixed Table Tennis, Ki-o-Rahi, Golf and did a Food Challenge. From the get go all our students put in 100% effort in all the sports they played, showed every single FIRE value and teamwork was great.

This tournament is a great opportunity for our younger students to have an insight and experience what an Area Schools Tournament is all about.



All Accounts Matter LTD

For all your accounting and tax needs!

If you are looking for a new Accountant, now is the perfect time! I would love to find out about your business and have a no obligation chat about how I can help you. So don't wait, call me now!

Sonia Emerson Chartered Accountant

GST | Tax Returns | Payroll | Bookkeeping | Cashflow Forecasting
Management Reporting | Rental Statements | Farm Accounts



CHARTERED ACCOUNTANTS™
MEMBERSHIP NO. 28488

ACCOUNTING SOFTWARE

myob

2020/2021
Certified
Consultant

XERO

myob

M: 021 221 1009 | P: 03 541 9005 | sonia@allaccounts.co.nz
367 Wakefield-Kohatu Highway, RD1, Wakefield 7095

www.allaccounts.co.nz

Harcourts Rural

PLATINUM BLUE LIMITED LICENSED AGENT REAA 2008

Your Local Rural and Lifestyle Experts

Wishing all our clients a very Merry Christmas and Happy New Years.

We've had a busy lead up to the Holiday Season with lots of interest in the Rural and Lifestyle sector and looking forward to an exiting start to 2025.

Thanks to everyone for all their support and business this year.



Team

TOBY RANDALL

027 233 9170 | toby.randall@harcourts.co.nz

TAPAWERA ELECTRICAL

Tony Stephens

Registered Electrician

Ph/fax 5224257
0276249489

All electrical needs
Domestic & Rural

Wiring, faults, some home appliance repairs
New heat pump installations



Free Quotes
Competitively priced



Tasman Bay Chiropractic

Keeping you in the game since 2002

Referrals, families and all new clients welcome

Visit our website or call for more information



03 544 4554 Monday-Saturday
tasmanbaychiropractic.co.nz

Find us on



Junior TOSI in Culverden Cont.

With all the effort from our students we ended up coming in FIRST place and winning the Junior TOSI Tournament for 2024. Each and every one should be very proud of themselves, they certainly did Steve, Tegan and Tapawera Area School proud. Thank you to Amuri for being great hosts and to all our parents/whanau who made the trip down to support, it doesn't go unnoticed.



Back row: Keetah Jones, Breeze Streeter-Mantell, Alyse Clarke, Joseph Butcher, Hunter Page, Levi Bennett, Bronco MacDonald, Tyler Hook, Harry Butcher, Logan Walsh, Atlanta Linstead.

Front row: Ella Walker, Paige Derbyshire, Levi Davis, Kianna Collins, Oliver Snackers, Patrick Ryan, Holly Bright, Rose McNab, Natalie Doig.

Tapawera Touch Team

It was so good having Leigh Davis coming in at lunchtime to work with our young touch team. Thank you!!!

Gumboot Day

Thanks for supporting Gumboot Day last week. Our tamariki had a great time. Mr McAuley had lots of fun with gumboot relays and dancing.



Wood for Carving

Kia ora e te Whānau, one of our students has fostered a love of carving. I was wondering if anyone had some nice pieces of native timber or another suitable hardwood sitting around in their shed that they would like to donate to the school.

Many thanks - Kellie Doreen

The Rivers - TAS School Magazine

I am looking for sponsors for the school magazine. You get an advert made for you, which you get to keep, acknowledgements, a magazine, and you get to be a philanthropist to the school community in which your sponsorship enables each child to receive a school magazine. It has class photos, sporting, cultural events, school trips, in all a record of the year's events.

Contact Liesel de Kriek at ldekriek@tapawera.school.nz



Artist; Tylar Christiansen

Friday 6th Dec
Monday 9th Dec
Thursday 12th Dec
Monday 16th Dec
Monday 16th Dec
Tuesday 17th Dec

Kapa Haka Festival - Motueka
Big Day Out at Quinney's
Year 7-8 Rewards Overnight
House Team Treat afternoon
Prizegiving
Last day of term



“Simple Life Hacks”
Brought to you by thelmahouse.nz
“Harden pine tree sap with hand sanitiser or hairspray before scraping off the carpet”

Providing gentle guidance when you need it most.



Simplicity Funerals

Simply respectful. Simply affordable.



Anna Loach
Manager / Funeral Director
Dip FD Reg. FDANZ

**NELSON & TASMAN WIDE,
WE'RE PART OF YOUR COMMUNITY**

Phone 03 929 5145 | 276b Queen Street, Richmond
nelson.simplicity.co.nz

School Community Garden Project

The Mitre 10 Helping Hands event in the school community garden was an inspiring day filled with collaboration and learning. Volunteers from Mitre 10 joined volunteers from the community, students, teachers and parents to enhance the garden, focusing on sustainability and hands-on gardening skills.



One of the main highlights was the construction of raised garden beds. We worked together to build several sturdy, elevated beds. This not only provided a more accessible gardening option for the community but also improved drainage and soil quality. We used leaves, sheep and horse manure, mulch and some good soil, supplied by Mitre 10.



As the raised beds were completed, everyone pitched in to plant a variety of vegetables and herbs. Mitre 10 representatives offered valuable tips on the benefits of raised beds and how to maintain them effectively.

In addition to the raised beds, the team also began the exciting project of transforming the garden shed. The shed got boxed and gravelled, thanks again to Joe Higgins for your time and work you do. The concrete is coming as soon as the weather lets us and then the lining of the shed will make it into a classroom.



Throughout the day, the atmosphere buzzed with laughter and teamwork. Students learned about the importance of nurturing plants, while volunteers shared their gardening expertise. The event culminated in a small celebration, with refreshments and the school Kapa Haka group performed some impressive items.



By the end of the day, the garden transformed into a thriving community space, symbolising collaboration and a commitment to sustainability. The raised beds became a focal point for future gardening activities, ensuring that the spirit of the event would continue to grow for years to come. The Garden Project is not finished, it has just started. We are so excited for the years to come and looking forward to numerous workshops happening for our community.



Please come and see what we do in the school/community garden. The next 2 meetings are Sat 23 November 9am and 7 December 9am. We will be celebrating our achievements on the 7 December after some work in the garden. Please come and join us to see the development.

Contact sreinert@tapawera.school.nz or meyles@tapawera.school.nz for more information or to receive informative emails.



COMMUNITY
TRANSPORT TRUST
Nelson Tasman

Connecting Tapawera

Affordable and accessible public transport provided by the Nelson Tasman Community Transport Trust with a team of friendly volunteer drivers

TUESDAY Departing	Route stops	THURSDAY Departing	Route stops
9:30 am	Tapawera Community Centre	9:30 am	Tapawera Community Centre
9:40 am	Kohatu Flat Rock Cafe	9:45 am	Woodstock (by bridge)
10:00 am	Wakefield Village Hall	9:55 am	Ngātīmoti School
10:30 am	Richmond Mall / E-bus Interchange	10:10 am	Motueka Airport / College St
10:45 am	Richmond Aquatic Centre	10:30 am	Motueka i-site / Library
2:00 pm	Richmond E-bus Interchange returning to Tapawera	1:00 pm	Motueka i-site returning to Tapawera

**BOOK TO CONFIRM YOUR SEAT OR
BRING \$6 TO PAY THE DRIVER
PH: 03 528 6543**



Nelson Tasman Community Transport Trust aims to create sustainable transport options for local communities and is supported by Tasman District Council and the Lotteries Commission

www.ntctt.org.nz



COMMUNITY
TRANSPORT TRUST
Nelson Tasman

Update on Transport Trust

The Trust is delighted to welcome Jude Tarr as our new Transport Trust Coordinator who will be working part-time for the Trust Tues-Thurs. She comes with a wealth of experience in customer service, marketing and communications in all sorts of roles including working with one of the main Great Taste Trail cycling tour operators.



She's been living and working in this region for the last 28 years and started with us in October. She came out to Tapawera in late October and met with our volunteer drivers and a number of you in the community who have a strong connection to community transport. She's been getting up to speed and making sure our vehicles and operations are shipshape.

We'll be continuing our Tapawera transport bus trial over the summer but switching to a Thursday route to Motueka instead of Wednesdays and retaining the Tuesday route to Richmond that includes going to the Aquatic Centre. The bus also stops at the eBus interchange outside TDC offices and with very regular buses, it's easy to get into Nelson or Stoke and back. Check out the flyer elsewhere in the Informer and do consider taking advantage of the service as patronage needs to increase if it is to continue. It's a cheap way to get to town and help reduce fossil fuel use.

The Motueka minibus service is shifting to providing a weekend service as there are no public transport services on the weekend or envisaged until 2026 so we are piloting that.

The community services are best booked via Motueka i-site to confirm your seat, but from 1 December you can just rock up with cash and pay the driver. We're encouraging the booking so people are not disappointed.

With the Trust's aim to demonstrate approaches that enhance people's wellbeing whilst mitigating transport emissions, we've also initiated a pilot trial this summer with Quinney's Bush. We are offering to carry fresh groceries for campervan/motorhomers on our Tuesday run to Richmond. The aim is to reduce transport emissions and the chore of resupplying in town for motorhome people and others who can then have the option to pre-order from Pak n Save on the Tuesday. We'll see how it goes. We're still keen to encourage groups to use the Serena vehicle (6 seater) for trips and there have been quite a few enjoyable ones done to date. If you are interested in using the Trust's services or vehicles or being a volunteer driver, please get in touch with Jude at jude@ntctt.org.nz and she can be reached at 022 682 2373.

Jo Leyland
Trustee NTCTT



The day before was a stunningly beautiful day, Thursday was either overcast or raining. About 15 Garden club members found our way to Deidre's wildflower and crafts on Harley road.

Cosy in a marquee (that unfortunately due to high winds, blew away later in the day), Deidre gave us an informative talk with q&a on how she got involved with her wildflower enterprise.

The raffle of two chrysanthemums was won by Janine Leeden and Linda Milsom. Auction, lunch and a walk through the wildflowers then a bit damp round the edges we headed home.

Next meeting is at 11am Thursday 12 December at 'Craigholm', 270 Thorpe-Orinoco Rd, Orinoco via Waiwhero Road at Ngatimoti. It is on the right-hand side of the road, with a sign. Continue up the long drive to the right, there is plenty of parking. Bring a seat, cup and a plate of finger food for a shared lunch – nothing that needs to be heated please. As there will be the usual raffle hampers please bring grocery items. Every item receives a raffle ticket – extra tickets are available for \$1 a ticket. Any extra baskets for hampers would be appreciated.

Craigholm is a well-established extensive garden and the club is paying the admission fee for club members.

Wishing everyone all the best for Christmas and the New Year.

Community Connectivity Survey - Results

First, I wish to thank households who completed the survey - seventy eight of you. Thank you to the businesses who displayed flyers and Four Square, OpShop and School who handled the collection boxes.

Improved telecommunications was rated a high priority in submissions to the Tapawera Community Plan 2024. How well is our community connected? The best way to answer this question was by a survey.

This report is an abbreviation of the full report which will be downloadable from mike.greenkiwifarm.nz/survey-report in December. Internet connectivity is reported here, mobile and phone will be covered in the full report.

Summary

Table 2, mike.greenkiwifarm.nz/table-2.

78 responses, represents 12% of 635 households that receive the community newsletter.

Only 20% were very happy with their internet connection. All connection types have similar quality issues. 31% using satellite responded, did not meet household needs.

44% using fibre responded; does not meet household needs. [Fibre is available in the village and is the closest we have to an "urban" setting, ie. internet should be great]

Satellite and ADSL / VDSL had similar low very happy percentages; 8% and 6% respectively. Fibre, Fixed Wireless and Mobile Data all had between 32% - 33% very happy ratings (see Table 2).

Conclusions

The survey indicates that households do not have good internet connectivity. Only 20% of households are very happy with their internet connections.

Only 33% of fibre connected households in Tapawera village are very happy. Fibre is the best method (gold standard) to provide a quality internet service. However, for Tapawera village this appears not to be the case.

Satellite is the latest technology, but Table 1 indicates it is not the silver bullet. It has fewer reliability issues, but it does have outages, 31% lasting over one day.

Recommendations

1. Chorus resolve ongoing Fibre connectivity issues households are experiencing in Tapawera village.
2. Households provide feedback to their Internet Service Providers (ISPs) of any connection problems. ISPs assume that you are happy with their service, unless they are told otherwise.
3. Government needs to invest even more in rural broadband; further expansion of Fixed Wireless in our area. More funding is required to expand into the Sherry River Valley. A cell site near Tui is planned for March 2025, pending funding. This funding needs to go ahead.
4. Starlink should be used only when all other options have been explored. It is expensive; valleys and trees can cause problems. It may be the only current viable solution for some locations. [Starlink provides 14% of New Zealand rural internet connections, highest per capita in the OECD. An indication perhaps that the government is forcing New Zealanders to invest in a foreign company. A company that New Zealanders have no control over. New Zealand should be investing in a diverse range of ground based technologies.]
5. Households - occasionally measure your download and upload speeds, to see if you are being delivered according to the plan purchased. This should be the first test if internet response is sluggish.

Survey Numbers

Numbers are low for some connection types, but the fact that 20% registered 'very happy' indicates the survey didn't just attract households with problems. All households were encouraged to complete a survey.

Mike Drake

Version 1.2

Internet Connection Type vs Quality - Table 1

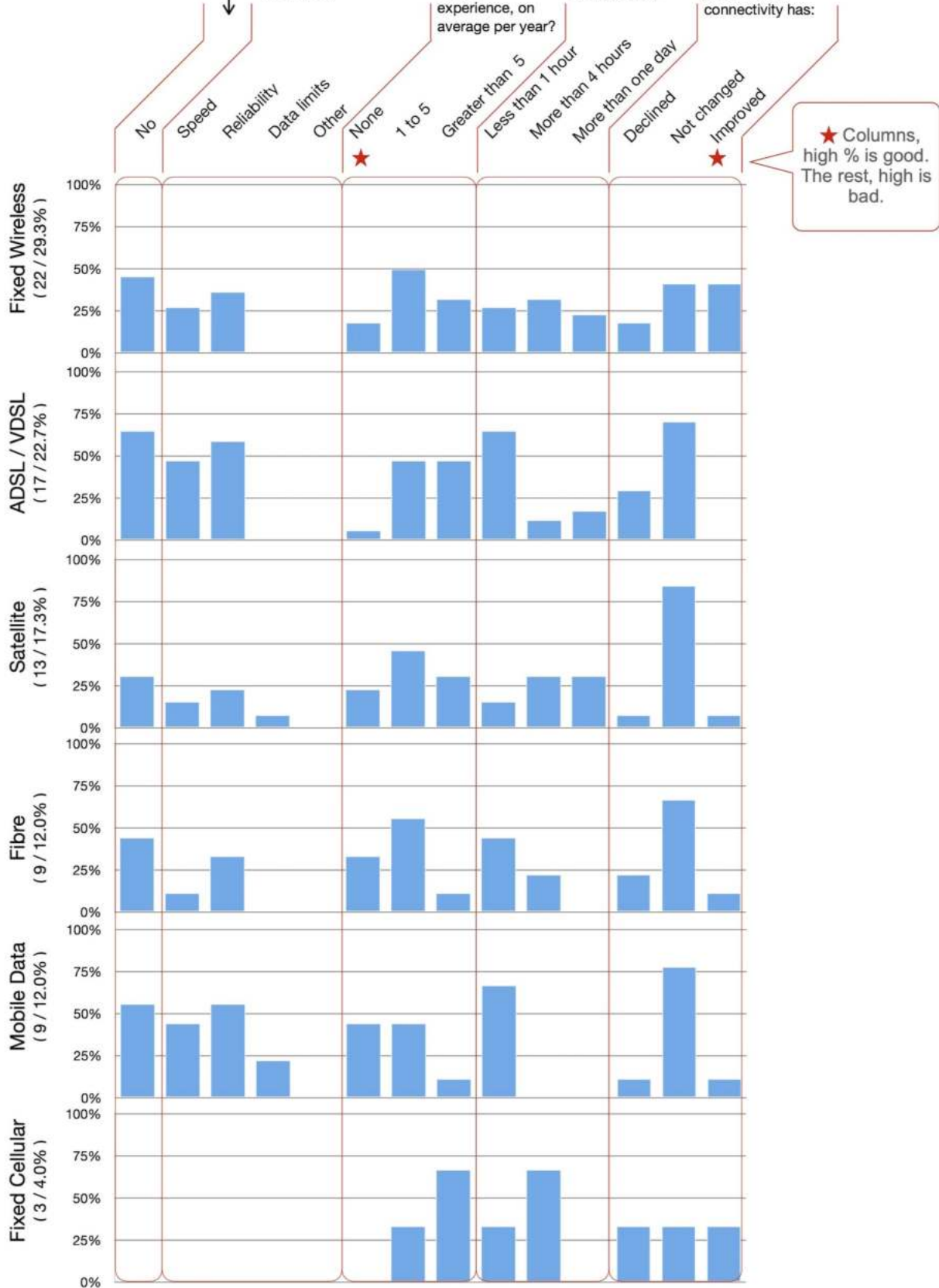
Q9: Does your internet access meet the needs of your household?

Q10: If you answered 'No' above (Q9). What is the reason?

Q11: How many internet outages do you experience, on average per year?

Q12: How long on average do outages last?

Question 13: In the last 12 months your internet connectivity has:



★ Columns, high % is good. The rest, high is bad.

Version 6.8

Carols in the Brook

Journey through the Christmas story with us
Sing your favourite carols



Stanley Brook Community Church

Sunday 15 December 6.30pm

Shared supper to follow in the community hall

All Welcome

COME TO A TALKING CAFÉ

Connect with your community



Talking Cafés are an opportunity to meet people, make new connections and learn more about your community.

Pop in for a quick cuppa, or stay for a longer conversation with friendly people. All welcome, no bookings required.

Upcoming Tapawera Talking Cafés

Tapawera Community Centre
Tuesday 10th December, 10.00-11.30am
Tapawera School Community Library
Tuesday 14th January, 10.00-11.30am

For more details:
wellby.org.nz
or phone (03) 546 7681

wellby

The Lady Tradie



Has your husband got a **ROUND TO**



Spring has sprung

and the grass has riz !

Do you wonder where a handyman is ?

Can't get one ?

Then call " Jen the Lady Tradie "

for all your outside spring clean-up jobs

* Gutters full of leaves;

* Lawns that are starting to bolt;

* Waterblasting those slippery paths

and all that spring growth that just might get away on you.

* **Local Person** * **Referees Available** *

Consideration & discount shown towards Senior Citizens

FREE QUOTES

Contact Jennifer

Phone or text: **027 544 2663**

After hours/leave a message: **03 522 4453**

Email enquiries to: jentheladytradie@gmail.com



Tapawera Connect updates:

Youth:

We are excited to have two new Youth Coordinators to continue the work that has gone before them and carry the planning and facilitating of more stimulating and challenging events and activities for our rangitahi/youth. A huge welcome to Josie Gardener and Leigh Davis! The rangitahi are super excited about getting back into the youth group activities in the new year and we are so stoked to have you both onboard.

Rural Mums:

The Rural Mums messenger group chat is as active as ever. Want to know anything about anything (power cuts, road closures and of course anything related to parenting little people) these Mums have got the answers! pm Phoebe Quinlivan if you'd like to be added to the group.

We have been having lots of conversations with school, kindy, playcentre and our local Mums and exploring the best ways to support our young families. Watch this space, and if you have some ideas, or would like support to get something new off the ground, we'd love to support you, so get in touch!

If anyone is interested in opening up and facilitating the Friday morning catch ups in a voluntary capacity, we would love to hear from you too.

Tapawera Connect Seniors:

The lovely Janine has been working solidly and consistently to support our Senior community. See her update for more details.

Hub Update

Council, TDCC and Tapawera Connect recently met with some locals who are wishing to retain the existing Community Centre which would mean finding another location for the new hub. Possibilities are being looked into, and pros and cons weighed up. We will keep you informed and seek your thoughts and views before making any final decisions.

Further updates will be available in the next Informer in February 2025.

Hub Fundraising

You may have seen, or already bought tickets for the picnic table raffle and pig raffle. Thank you! The hub fundraising team will be meeting soon to discuss more fundraising ideas and they would love your help! Many hands make light work :)

If you have any ideas or connections, know of any funding sources we can tap into, or would like to make a financial contribution please get in touch:

Email tapaweraconnect@gmail.com, text Phoebe on 021 211 6730, or call 5224929.

Wakefield and Districts Health Trust

Wakefield and Districts Health Trust owns and maintains the Wakefield Health Centre building and also supports medical and health-related services in the wider community while looking to generally enhance the health and well-being of the community.

Maintenance projects have been a focus this year as well as supporting the Health Centre to maximise the use of their rooms.

A bike rack for patients and a designated mother and baby parking area are planned for outside the front of the Health Centre. This will also be beneficial for Whānau Āwhina Plunket car seat checks.

The 15 AEDs the trust funds and maintains have all had their annual checks and services. Maintenance of the AEDs remains an ongoing project, every year check the collection of all 15 AEDs is timed to meet the arrival of the technician from Auckland followed by the return of all 15 to their locations. Batteries need replacing regularly as well as pads. Each AED is also monitored over the year either by a member of the Trust or by people in the community. We are grateful for their assistance. The Trust AEDs are in Wakefield, Spring Grove, Dovedale, Belgrove, Kohatu, Tadmor, Golden Downs, Glenhope and St Arnaud. You can find more information and download the excellent AED Location app here <https://aedlocations.co.nz/about/>. This includes other AEDs in the area, many are also listed in this publication, there is also a link at the top of Wakefield Health Centre Website.

For more information the Trust can be reached by email wdhealthtrust@gmail.com

Tapawera Community Craft and Market Day

Last Sunday of the month



Across the road from 4 Square on the village green, 10am to 2pm.

Bring along your crafts/produce /unwanted items to sell.



Enquiries to Amanda Beer on FB messenger or via the Tapawera and Surrounding Valleys FB page.

There will be no market on the 29th December so the next Craft & Market Day will be 26 January 2025

BinGo Bins
DRUM & WHEELIE BIN HIRE

Craig Fry "Cracker"
Owner/ Operator

027 761 0240
bingoriwaka@gmail.com

voltz
ELECTRICAL LTD

Julian McGaveston
Registered Electrician

For all your domestic, commercial and rural electrical needs.

T: (03) 522 4488
M: 021 566 645
F: (03) 522 4698

E: voltzelectrical@silkwweb.net.nz

2227 Wakefield Kohatu Hwy. RD2. Wakefield 7096



Grant Applications

Tapawera Sport & Recreation Society Inc have restructured our grants process following this year's AGM.

Grants will only be considered and payments issued once a year.

Applications will close 1st May 2025 for the year.

Grant Applications are available off our Facebook page or email us to request a copy.

Please return before May 1st for consideration at our ANNUAL MEETING.

All applicants will be advised we have received your application and then advised before the end of May of your application outcome.

TSRS Committee
tapawerasportandrec@gmail.com

Caravan Weekend

Tapawera Sport & Rec are looking for roast donations and volunteers for our fundraiser at the Caravan Weekend February 1st 2025, please email on tapawerasportandrec@gmail.com if you can assist.



Senior's Snippets December 2024

with Janine Leeden, 0277525975

Here we are in December, facing Christmas and a New Year again already. As I write this there is a bit of frenetic activity going on for the wind up of the end of the year.

By the time this goes to print we will have had our Seniors Christmas Party at the beautiful venue, 'Thelma House', with much thanks to Nicola Allan for hosting and Raewyn Cruttenden from Kainga Kai for the amazing catering! I'm sure I can say that we all had a lovely day and the weather turned it on so we could enjoy the garden in all it's glory. Geraldine and Jack hoped to join us as well to enjoy the venue that was their family home for so long. What fun and a great way to round off another busy year. I'll try to post some photos next year.

Our final Wellby Talking Cafe for 2025 will be held at the Community Centre on Tuesday, 10th December from 10-11.30am. As usual, everyone is welcome to join in for a free coffee/tea and chat.

Our Wellby Talking Cafe will move to the School/Community Library for 2025 from 14th January, from 10-11.30am and on the 2nd Tuesday every month. This will give us a more relaxed and comfortable location to share over a cuppa, while offering the opportunity for locals to become more familiar with the facility that is offered there. This will allow us to extend the invitation to more of the school community as well, especially once school starts back. Please come along and join in and meet someone you haven't yet met!

There will be **no Digi Drop-in** until February now, so watch this space for a change of venue for that as well.

Our next Tea and Talk will be at the Memorial Hall on Tuesday, 28th January, 2025, from 10-11.30am. \$3 covers morning tea and a great time of catching up.

Sit and Be Fit will continue every Friday morning at 10-11am with a cuppa, chat and opportunity to join in our current favourite game – Mexican Trains – throughout the summer. The crew have previously been so keen to keep going over Christmas and New Year, which is when we tend to over indulge anyway, so we'll continue meeting at St Peter's Church on the Main Road. Even if you want to wander down and join in a game of trains from 11am-12pm you'd be welcome (this doesn't apply to my regulars. You have to come for exercises first or no playing Trains!).

I wish everyone a blessed Christmas time with friends and family, and a very happy, safe and healthy New Year!

"When you practice gratefulness, there is a sense of respect towards others"

Dalai Lama



Seasons Greetings from the Informer

Many thanks to everyone who makes the Informer possible - contributors, advertisers, the school for printing and the posties for distribution. There will be no Informer in January so the next edition will be February - content due 20th January 2025.

TE TUMU

WAIORA

To head towards wellness



**Kia ora koutou
Ko Ollie tōku ingoa
Hello everyone, my name is Ollie.
I am your Health Coach at Wakefield
Health Centre.**

***Together, we can expand the knowledge,
identify your strengths and values and
celebrate your progress!***

Come see me to chat about:

- ✓ Managing a condition such as diabetes, asthma, or high blood pressure
- ✓ Improving your overall health and wellbeing
- ✓ Becoming smokefree
- ✓ Managing stress and anxiety
- ✓ Improving your sleep
- ✓ Connecting with whānau/friends
- ✓ Connecting with community

**Just ask your GP
about meeting me
or have a
Korero/chat with
reception.**

**Book in with me -
IT'S FREE!**



Christmas and New Year

As in previous years we will only be closed for the statutory holidays. During the short weeks between Christmas and the New Year and the first week of January we will be running a skeleton staff at reduced hours and will only be accepting acute appoints on the day.

Repeat Prescriptions – Christmas and New Year

With Christmas approaching, it is a good time to double check you have your long-term medications ordered in good time. Give us a call or order through the portal.

Meningococcal Disease



Do you have a child starting university, living in halls of residence? They are eligible for vaccinations. Please see below for more information.

Although meningococcal disease can affect anyone, teenagers and young adults living closely with others (e.g. in boarding schools or university halls of residence), are at high risk and should be vaccinated to protect against meningococcal disease.

- Menactra® is free for people aged 13 to 25 years who, within the next 3 months will be living, or are in the first year of living in:
 - ◇ boarding school hostel
 - ◇ university hall of residence
 - ◇ military barracks
 - ◇ prison.
- Menactra, NeisVac-C and Bexsero are free for people who have low immunity from certain medical conditions, or if they are a close contact of a meningitis case. You can purchase these for those that are not eligible for a free one.

Meningococcal vaccines help protect you for up to 5 years. Talk to us if your last one was more than 5 years ago.

For more information about getting immunised against meningococcal disease talk to your doctor or nurse.

 **The team here at Wakefield Health Centre wish you a healthy and peaceful Christmas and New Year.** 



Library News

With only four weeks to go till the end of term, it is a good time to have a look around bedrooms and the house for any books that may be overdue and get them back in to the library.

I have also just got in some really good books from the national library for children of all ages to read over the Xmas holidays. Graphic novels, non-fiction and some cool fiction titles.

We have also just replaced our Richmond library collection and there are some amazing books, both fiction and non-fiction.

I am hoping to be able to open occasionally during the holidays for anyone who would like to change their books. I will keep you updated as I work out days and times.

We have some interesting initiatives in the pipeline for next year, so watch this space.

As usual we are behind the tennis courts and anyone is welcome to come in during school hours. If you have a membership and we are not open, please sign in at the office and get a key.

A reminder that membership is free.

Ph 03 5224337 ext 213

Ngā mihi
Kelly



Tapawera Netball Club

We have a few important dates coming up, see the image below. We welcome all players even if you haven't played before but want to get fit or be a part of a team, we would love to see you all!



Lissie Anglesey, Club Secretary
tapaweranetballclub1988@gmail.com

Book Discussion Group

Meet: 4th Thursday in month, 10am
 Contact: Adrienne Baigent 021408892

Federated Farmers

Contact: Harry Matthews - Field Rep -
 0275078901

Golden Bush Garden Club

Meet: 2nd Thursday of month
 Contact: President, Linda Milson
 02102510945, or Shirley Percy 5224924

Golf

Meet: every Sunday, Ladies 9 hole
 every Tuesday
 Contact: Gary Oldham ph. 0278080578

Historical Society

Contact: Barbara Carleton ph. 5224317

Informer

PO Box 15 Tapawera
 Email tapawerainformers@gmail.com

Justices of The Peace

Peter Phillips ph. 5224313
 John Ellis ph. 021 522429
 Brent Hodgkinson ph. 5224381
 Susan Fenemor ph. 0275224009 (text
 during school hours)

MENZSHED

Contact: Peter Phillips (Chairman) - 03
 522 4313 or Geoff Persen (Secretary) -
 03 522 4262

Netball

Contact: Susan Fenemor ph.
 0275224009 (text during school hours)

Ramblers

Meet: each month
 Contact: Shirley Percy ph. 5224924

Shedwood Hall bookings

Contact: Tania Higgins ph. 5224587

St Andrews Church Stanley Brook

Services every Sunday. Cup of tea
 afterwards.
 Contact: Lee Winter ph. 5224160

St John – Tapawera

For emergencies Dial 111,
 Email info@stjohn.org.nz

Tapawera & Dist. Community Church

St. Peter's Tapawera: no services at
 present
 Contact: Church office 03 541 8883
wakefieldanglican.@xtra.co.nz
 Urgent enquiries to Andrea 0024169386

Tapawera & District Community Council

Meetings: 3rd Tuesday of month,
 7pm Tapawera Community Centre,
 email: TapaweraTDCC@gmail.com

Tapawera Community Centre

Email: Nicola Allan
nicolaallan434@gmail.com or
TapaweraTDCC@gmail.com

Tapawera Connect

Contact: Phoebe Quinlivan ph. 021 211
 6730 or 522 4929, email:
tapaweraconnect@gmail.com

Tapawera Creative Fibre

Meet: every Wednesdays, 10am-2pm,
 Memorial Hall
 Contact: Dallas Robinson ph. 5224984

Tapawera Food Bank

Contact: Suzzi Lankshear ph.
 0277491063

Tapawera Jujutsu Club

Contact: Tony Hammersley ph. 5224609

Tapawera Music/Country Music Club

Meet: Alternate Sundays, Tapawera
 Hotel 7:30pm
 Contact: Elaine Douglas ph. 5418612

Tapawera Op Shop

Open: Tue 11am-2pm; Wed 10am-2pm
 and Sat 10am-2pm
 Contact: Amanda Beer ph. 0278024612

Tapawera Playcentre

Meet: Mon & Thur, 10am -12:30pm
 Memorial Hall ph. 5224456

Tapawera Rugby Football Club

Bookings: ph. Judy Benjamin 5224445

Tapawera Sport & Recreation Society

Contact: Judy Benjamin ph. 5224445

Tapawera Volunteer Fire Brigade

Contact: Dean Millar Chief ph.
 0279651399; Ted Oakly Deputy Chief
 ph. 0210704033

TAS / Community Library

Open during term times Mon-Fri
 10:30am-1:30pm or if closed by
 contacting school office during school
 hours. Contact: Kelly Russell
 Library ph. 5224337/ext. 213

TESSI

Contact: Bruce Whyte ph. 5224550

Toy Library

Open Monday or via arrangement:10:30
 -11:30am contact Jan Barker:
 0273915424 or 5524984

What's on December

- 12 Garden Club, 11am, 270
Thorpe-Orinoco Rd, Orinoco
- 10 Tapawera Talking Café, 10-
11:30am, Tapawera
Community Centre
- 15 Carols in the Brook, Stanley
Brook Community Church,
6.30pm
- 17 TDCC monthly meeting,
Community Centre, 7pm

What's on January

- 14 Tapawera Talking Café, 10-
11:30am, Tapawera School
Community Library
- 20 Articles for Informer close 5pm
- 24 VAST Art Exhibition Opening
Night 7pm, Shedwood Hall
- 25-2 Feb VAST Art Exhibition,
open daily 10:30am-4pm,
Shedwood Hall
- 26 Craft & Market Day, across
from Four Square, 10am-2pm
- 28 Tea and Talk, Memorial Hall
10:00am - 11:30am

**GP & Nurse at
Tapawera Clinic**

(during school term time):

GP clinics – Mondays 9am –
12 midday

Nurse clinic – alternate
Tuesday mornings - phone
541 8911 for dates

Visual Arts Society Tapawera

Contact: Dallas Robinson ph. 5224984

Wakefield Police

Constable Jamie White –
jamie.white2@police.govt.nz
 Constable Matthew Berquist –
matthew.berquist@police.govt.nz
 Non Urgent (CRL) – Call 105
 Happening Now – Call 111