

2024 TDCC Chair Report to the AGM**August 2024**

The prospect of a new community hub has undoubtedly been the prime focus of both TDCC and many in the wider community over this past year. To have progressed from the Feasibility Study starting a little more than a year ago to having now secured more than 1" of the total build cost for a new hub is nothing short of astonishing. Much credit must go to Phoebe Quinlivan and her team at Tapawera Connect for their unwavering vision which got this project off the ground and which we are now seeing well on the way to being realised.

The advocacy of our Ward Councillor and Deputy Mayor Stuart Bryant, who along with Councillor Christeen Mackenzie reliably supports our monthly meetings, has also been vitally important in progressing the hub project and maintaining its profile at TDC. Stuart's and Christeen's efforts towards improving the lives of everyone in the broader Tapawera Community as well as specifically for the community hub are hugely appreciated, thank you.

I thank Nicola Allan for her relentless drive and industry towards improving the Community Centre and Op Shop. The Op Shop has historically been, and continues to be, a cornerstone of our TDCC operation providing far more than just an important source of funds for community projects: the supply of low-cost and occasionally free items for the community, a comfortable and welcoming location for people to come for a chat and hot drink, a venue for people to donate or recycle surplus and unwanted goods, a project where locals can contribute in productive and fulfilling ways, and an enterprise that attracts non-locals into Tapawera. I commend the volunteers for their selfless efforts serving our community at the Op Shop and in particular Amanda Beer for recently stepping up to take on the Op Shop Manager role.

We were extremely sorry to lose Sarndy from the committee at the end of 2023. Her role as our proficient Treasurer and voice of extensive Tapawera experience has been of enormous value during her time on the committee. I thank Sarndy for the significant and valuable contribution she has made during her tenure.

We are most grateful that our dependable and dedicated Informer editor Gill Hammersley has stepped up to manage our TDCC accounts following Sarndy's departure. Gill's efforts for both the Informer and our accounts are extremely important for the community and I express thanks and appreciation for all that she does.

The splendid garden adjacent to the Community Centre, a superb backdrop for the Kahurangi Gateway, would not be possible without the selfless commitment and industry of Kate Radloff and Sue Grant. I wholeheartedly thank them for their steadfast work on this essential complement to the Community Centre.

With so much attention on the community hub it may be easy to forget the numerous other projects occurring at the same time such is the dominance the hub has exerted over our time, efforts and attention. Many of these are included in the list below which emphasises the breadth of TDCC's support for the wider Tapawera community.

TDCC, like all incorporated societies in New Zealand, has been operating under legislation more than 100 years old, the Incorporated Societies Act 1908. This legislation recently underwent a major overhaul to be released as ISA2022 with a requirement for incorporated societies to comply and re-register no later than April 2026. Our re-registration will require adopting significant additional compliance measures as well as a major revision of our constitution. We have begun this process and will continue working towards reregistration through the next year.

Finally, and I believe most importantly, our TDCC committee members deserve a huge vote of thanks for their committed and dependable work for our community. Without their dedication and generous contribution of time and energy the many achievements of this past year would not have been possible.

Significant progress over the past 12 months includes the following:

Community Centre

- Nicola Allan appointed on limited-term contract as Community Centre Project Coordinator
- Op Shop refurbishment – thanks to Brad Fenemor for his contribution along with the many volunteers who helped in numerous ways
- Electrical fittings in the Community Centre were inspected and relevant repairs and upgrades made – thanks Tony Stephens
- Midwifery consultancy operated by Lisa Butcher and Annabel Kennedy established in the Community Centre early 2024
- Chimney and gutters cleaned – thanks Martin Simpson
- Firewood donations and wood splitting - thanks to Mike Drake, Heather Spence, Nicola Allan and Geoff Proffit
- Approval given for Molly's Coffee Cart and Kainga Kai's food cart to operate outside the Community Centre

The Lady Tradie

Has your husband got a **round**



Spring has sprung

and the grass has riz !

Do you wonder where a handyman is ?

Can't get one ?

Then call " Jen the Lady Tradie "

for all your outside spring clean-up jobs

* Gutters full of leaves;

* Lawns that are starting to bolt;

* Waterblasting those slippery paths

and all that spring growth that just might get away on you.

*** Local Person * Referees Available ***

Consideration & discount shown towards Senior Citizens

FREE QUOTES

Contact Jennifer

Phone or text: **027 544 2663**

After hours/leave a message: **03 522 4453**

Email enquiries to: jentheladytradie@gmail.com



VOLTZ

ELECTRICAL LTD

Julian McGaveston
Registered Electrician

For all your domestic, commercial and rural electrical needs.

T: (03) 522 4488
M: 021 566 645
F: (03) 522 4698

E: voltzelectrical@silkwweb.net.nz

2227 Wakefield Kohatu Hwy. RD2. Wakefield 7096

RURAL POST, RD 2 Wakefield

Contact Nick & Jackie Costley for all your RD 2 Wakefield postal needs.

Including prepaid envelopes, stamps, courier items and local freight from Wakefield, Dovedale and Tapawera. Prescriptions from Wakefield.

Phone 0275418581

Mark & Tania Gill
T/A MTJ Transport
RD2, Nelson

NZ Post Rural Contractors
Servicing

Motupiko-Korere-Kikiwa-Tophouse-St Arnaud-Glenhope

For all your Postage, Milk & Courier Freight

Operating 3 Days Weekly
(Monday-Wednesday-Friday)

Departing Nelson 8.00am

Phone 546 6295

Material & adverts for Informer

All material is to be sent to either:

Informer, PO Box 15, Tapawera, 7055
or email- tapaweraformer@gmail.com

To be received by 5pm

20th of the Month

If emailing a word document please send in Word as an attachment.

If sending an advert please save as a jpeg before sending.

Please check your emails to see your article/advert has been received as sometimes there needs to be alterations.

Advertising rates for Informer

Standard ad	Pay monthly	Pay annually
1/4 page advert	\$32.50	\$286
1/2 page advert	\$45	\$396
Full page advert	\$65	\$572

Adverts that require editing may cost extra

The Informer is produced and published by the Tapawera and Districts Community Council, PO Box 15, Tapawera, 7055;

email: tapaweraformer@gmail.com

Circulation 635

Editor: Gill Hammersley

The Editor and Publisher try to ensure information published is truthful

and accurate, but do not accept any responsibility for errors or omissions, or for any consequences of readers' relying on the information published. Opinions expressed by contributors may or may not be endorsed by the Editor or Publisher.

All material submitted, whether editorial or advertising, is accepted at the discretion of the Editor and the Publisher.

2024 TDCC Chair Report to the AGM cont.

- Amanda Beer appointed as Op Shop Manager August 2024
- Oak near road felled by TDC, split for Community Centre firewood and stored to dry – thanks Daryl and Raewyn Cruttenden

New Community Hub

- The TDCC maintained a continuous presence on the Hub Steering Group, attending monthly meetings or as needed
- Feasibility study for a new hub released Dec 2023 with clear recommendation to construct a new community hub (in preference to upgrading an existing community building), budget range \$1.8—2.7 million
- Two public drop-in sessions provided to inform public about new hub
- 85% of funding secured for upper budget limit – \$1.8 million from TDC in year 2 of the LTP (Long Term Plan); \$0.51 million from DIA (Department of Internal Affairs)

TDCC Committee elections in September 2023

- Two new members joined the committee - Wayne Leeden representing Rakau/Tadmor and Heather Spence representing Motupiko
- Existing members returned – Tim Leyland as Secretary, Sarndy Scott as Treasurer, Steve Udy as Chair, Geoff Proffit representing Wangapeka, Gavin Scoble representing Kiwi/Tui/Kaka, Lisa Carleton coopted to represent Tapawera
- Following fitting of CCTV cameras in Tapawera last year, signs were posted within the township to advise the public of the cameras
- I joined (by Zoom) the chairs from the other Tasman community associations at a meeting on 4 October last year with the TDC Mayor Tim King and other TDC staff to explore specific and common issues
- TDCC supported the Nelson Marlborough Rescue Helicopter Trust with a \$500 donation
- Negotiations with forestry owner One Forty One about establishing the promised mountain bike park in Tapawera failed to make any useful progress; TDC Councillor Dan Shallcross agreed to continue working on this project
- TDCC facilitated a public meeting by Nelson Bays Primary Health in December 2023
- Erosion damage to the Dart Ford crossing was highlighted to TDC and temporary remedial works undertaken while a permanent repair planned
- Advertising rates for the Tapawera & Districts Informer were increased in Feb 2024
- Gill Hammersley contracted to keep the TDCC accounts following Sarndy's resignation end 2023
- An ANZAC wreath was purchased for Tapawera in April
- Kainga Kai provided a popular and successful hangi on 30 June to celebrate Matariki Day 2024

- Policy implemented to reimburse TDCC committee members for travel to meetings
- Initial steps taken towards re-registering TDCC under the Incorporated Societies Act 2022

Steve Udy, TDCC Chair

Tapawera OpShop Opening Hours

Please note the OpShop's new opening hours.

Tuesday	11am to 2pm
Wednesday	10am to 2pm
Saturday	10am to 2pm

These additional opening hours are possible through generous contributions of time and effort from our wonderful OpShop Volunteers.

Seeking a Volunteer

Tapawera and Districts Community Council (TDCC) is looking for a volunteer to help with social media communications on what the Community Council is doing, notices of events in the community and Informer articles. If you have skills in this area and are willing to help us out please get in touch with Tim via TapaweraTDCC@gmail.com

Tasman District Council Rates Rebate

Did you know there's a rebate scheme offered by the Department of Internal Affairs that could give you a discount on your rates?

If you fit the criteria, you could get a credit of up to \$790, depending upon things like your income, number of dependents and rates you pay.

A rates rebate is a partial discount on a rates bill and simply means you pay less for your rates. If you own your home and are on a low income, you may be eligible for the rebate.

People who applied last year within Tasman District will automatically be sent a letter and form to apply again this financial year.

You can't claim a rebate for the rates payable on a property that's used mostly for business, farming, commercial or industrial purposes, or a home that isn't your usual place of residence like a holiday home.

Please apply as soon as you can, although you do have until 30 June 2025 to apply for a rebate for the current financial year.

If you're not sure if you're eligible, head to our website for more information – tasman.govt.nz and search 'rates rebates', otherwise call us on 03 543 8400 and we can check your eligibility for you.

TAPAWERA AREA SCHOOL
AND COMMUNITY

&

Building better spaces for better communities



**WE HAVE A SCHOOL/COMMUNITY
GARDEN WORKING BEE WITH THE HELP
OF MITRE 10 ALL WELCOME.
LUNCH WILL BE PROVIDED FROM THE
AMAZING PEOPLE OF MITRE 10.**

17 OCTOBER, 2024

8AM - 6PM

**PLEASE BRING GARDEN TOOLS
AND A WHEELBARROW!!!!**

Thank You, Joe and Brendon Higgins, for Revitalizing Our Community Garden

The residents of Tapawera wish to extend their sincere thanks to Joe and his son Brendon for their recent contributions to our community garden. Joe and Brendon generously supplied their time, digger and truck to help clear away the extensive debris that had accumulated over the years.

Their expertise and equipment made a significant impact and the outside assistance was crucial in getting the garden back on track, their efforts helped us tackle a job that felt overwhelming.

With the space now cleared, the community has begun working in it, aiming to be ready for the big makeover with Mitre 10 MEGA Helping Hands on 17 October 2024.

Thank you, Joe and Brendon Higgins, for your commitment and for helping improve our community garden. Your contributions are appreciated by all.



New Date for School & Community Garden Restoration: Thursday 17 October

Our original Mitre 10 Helping Hands day was postponed due to rain and too-wet ground. We hope our volunteer team will be able to make it on Thursday 17 October instead.

To refresh your memory, Mitre 10's Helping Hands' national programme donates materials and a team of their staff volunteers to work on projects that help Kiwis love where they live, work and play. It depends on local community volunteers working alongside the Mitre 10 team. With Mitre 10's help our school and community garden will be brought back to life with new gardens, planting and infrastructure that will result in an excellent community-wide resource. **Its success will depend on input from local volunteers - that's you and me.**

Key date for your volunteer calendar:

Thursday October 19, 8am - 6pm Mitre 10 Helping Hands. As many volunteers as possible please. Come and go as you are able. BBQ.



Excuse Me, Your Epidermis Is Showing!

As summer begins to set in (as I write this the hills have been covered with snow) it is an important time of the year to consider how we are protecting our skin from UV damage.

This is important for 2 reasons:

1. Our SKIN AGES QUICKER i.e. wrinkles, thinning due to sun exposure
2. UV damage is the cause of many SKIN CANCERS

Here are PRACTICAL things you can do to PROTECT your skin:

1. Apply sunscreen 15min BEFORE you go out in the sun in the morning and reapply EVERY 2 HOURS if working outside
2. Wear a BROAD BRIMMED HAT that keeps your head/neck in the shade
3. Long-sleeved shirts/pants are helpful in avoiding direct sunlight

If you have previously had skin cancer removed or sun damage treated, or if you have a strong family history of skin cancers, then these steps are very important to keep you safe.

It is also important to keep a proactive approach with regular skin checks if you are at increased risk of skin cancers.

If you'd like to know what your risk is, then go to the link below or follow the QR code:



<https://www.scanyourskin.org/risk-prediction-tool/>

Use sun screens with SPF 50+ for the best protection.

See you out there!

Dr Wayne Hurlow

AI in your consultation

Moving with the times. Some of our GPs are using a tool called Heidi AI which assists in writing notes into patient records. This should improve the consultation experience

as your GP doesn't have to type away while talking or examining you. There are no privacy issues as the information goes directly into your notes, as normal, on our patient management system.



Rural Mums and Rangitahi Explorers Youth Groups:

Our current Rural Mums coordinators Abby and Tamara finish up at the end of September, and the group will enjoy rollerskating and dinner together to farewell and thank them for their wonderful work and commitment. The coordinators and a few other key community members such as Claire from Playcentre, Gina from Kindy, Sarah from school and parents met to review the programme and what it should look like going forward to best support our young rural families.

We ran a similar process for the Youth Group and we all look forward to having these vital groups up and running asap!

Hub Progress:

Last month we visited a number of other hubs around Nelson Tasman region and got some really great insights into what is needed to make a community space hum and thrive. We are streamlining these ideas to get the best possible ingredients to suit our needs in Tapawera, and ensure we are complementing (rather than competing with) the other established halls and meeting spaces.

A huge welcome to Sarah Coard and Sabine Reinhart from the school to our Tapawera Connect Meetings. It is wonderful to have these two there.

Weaving together our knowledge and ideas makes us so much stronger as a community and we can all support one another! It's very cool.

Anyone in the community is welcome to join our meetings which are held fortnightly from 6-8pm at the Community Centre. Contact us for dates: tapaweraconnect@gmail.com

Finally, a huge thankyou to Megan Jordan for being on the Tapawera Connect Trust and best wishes to you Megan for your new job. We loved having you on the team! You brought so much value and wisdom and thought to the work. You are already missed!

If you are interested in being a Trust member, please email us as above, we'd love to hear from you!



Tapawera Netball Club September News

This month saw netball for both the senior grades come to an end and having us come together for our prizegiving. All teams ended the year on a high with Tapawera Blue Rock Hops finishing the season in Senior Grade 2, Tapawera Fry Contracting in Senior Grade 6 and Tapawera Hotel in Collegiate 10AA. Well done girls, you should all be proud of the efforts you put in and the results you achieved over the season. We also want to take the time to thank our sponsors Blue Rock Hops Ltd (Glen & Sara and Brian & Sarah Clayton), Fry Contracting (Kevin and Andrew Fry) and Tapawera Hotel (Brendan Gleeson and Shara Khan).

Prize Giving Results:

This year we had a wide range of recipients.

Tapawera Blue Rock Hops:

Most Improved Player - Sam Fenwick
Most Valuable Player - Renee MacDonald

Tapawera Fry Contracting:

Most Improved Player: Lissie Anglesey
Most Valuable Player - Khiana Telfer-Eggers and Shimiela Streeter-Mantell

Tapawera Hotel:

Most Improved Player: Jaidyn Webb
Most Valuable Player: Alyse Clark

Club Trophies:

Best Defensive Player: Renee MacDonald and Toni Derbyshire
Best Attacking Player: Sam Fenwick and Breeze Streeter-Mantell
Most Committed Team: Tapawera Blue Rock Hops
Family Commitment: Lane Williams whānau
Most Committed Committee Member: Tania Higgins and Lissie Anglesey
Overall Contribution to Club Netball: Toni Derbyshire and Lissie Anglesey

Once again congratulations to all of the winners of these trophies, we are proud of each and every one of you.

Social Netball - who is interested in playing, it is held at Nelson Netball on Tuesday evenings 6:15 and 7:15 starting 15th October - 3rd December - email the club asap and let's see if we can put a team together.

Lissie Anglesey
Club Secretary
tapaweranetballclub1988@gmail.com

Starting a Vegetable Garden from Scratch



Want to start growing your own veges or want to improve your results?

Come along to a hands-on workshop at the School & Community Garden, 9am-midday, Sunday, 17 November.

The workshop is being offered to the community at no charge, but we ask that if you register to attend, please turn up.

Register via this Google form:
<https://forms.gle/Tz5h2DdWuDyRXKW49>

Or click on the link to the form in the Local Happenings section of the tapaweracommunity.nz website

Or fill in a form at the community centre reception desk during Op Shop hours and place it in the box.

For more information contact Gavin Scoble 027 757 6665

Tapawera Get Growing Workshops are a Community Plan initiative supported by the Community-led Development Programme and Tapawera Connect



COME TO A TALKING CAFÉ

Connect with your community



Talking Cafés are an opportunity to meet people, make new connections and learn more about your community.

Pop in for a quick cuppa, or stay for a longer conversation with friendly people. All welcome, no bookings required.

Upcoming Tapawera Talking Cafés

Tapawera Community Centre

Tuesday 8th October, 10.00-11.30am

Tuesday 12th November, 10.00-11.30am

For more details:
wellby.org.nz
or phone (03) 546 7681



HANDYMAN

- * General property maintenance
- * Clean out/tidy up
- * Water blasting
- * Gardening
- * Chain sawing
- * Repairs
- * Demolition
- * Any farm work

Fair hourly rate. Honest and hard working.

Local references available.

Please enquire to Jeremy Ellis (03) 522 4460

TAPAWERA ELECTRICAL

Tony Stephens

Registered Electrician

Ph/fax 5224257
0276249489

All electrical needs
Domestic & Rural

Wiring, faults, some home appliance repairs
New heat pump installations



Free Quotes
Competitively priced



TOWN & COUNTRY

VET

"...for all creatures great & small..."

**Regular Tapawera visits
discounted mileage
T&Cs apply**

Ph 544 1200

info@tcvet.co.nz * www.tcvet.co.nz

25 Edward Street, Wakefield
35 McGlashen Avenue, Richmond



24 hour emergency vet



Tapawera Creative Fibre

Spring has sprung, making its appearance with all the lovely daffodils popping their cheerful face up for our pleasure, lambs and the odd calf, not to mention the pollen already drifting through the air.

Our crafters have been busy with projects they are working on. Last week we started our Fiddle/Twiddle Muffs or knee blankets. The goal is to use different textures, shapes, items that can be moved like beads or buckles. These will be taken to the Rest Homes to be distributed to people who have dementia, a very worthwhile project for us to do.



Coming up this week we will begin to learn Chickin Scratch Embroidery. This style of embroidery is also called Gingham Embroidery. You may remember your grandmother or other older relatives having checked table cloths and tray cloths embroidered with bright bold colours. We will start by learning the basic stitches and progress from there.

Chickin Scratch embroidery started with the basic stitches, a learning curve for those who ended up taking part in the workshop, there were only one or two who said they were interested but thankfully more of the group participated once they seen the samples of what could be done, (I need to thank my MIL for her lovely table cloths and tray cloths for that bonus). Unfortunately the tutor for this workshop felt that she was unable to teach this module, hence a frantic few sessions on YouTube by yours truly to see what I could learn of this process. Anyhoo most appreciated the effort I put in to learn.

The Creative Fibre AGM is this weekend and I know our representative will have put in a glowing report for Tapawera, mentioning of course our new member Kerri and our Tuesday night people who can't do a Wednesday. All is good in the hood.

Whichever craft you enjoy, you are always welcome to join our Group, we meet each Wednesday at the Memorial Hall,

10am to whenever, usually around 3pm. Or Tuesday evening at mine 7pm to 9pm. Come along and meet us, enjoy a cuppa and good conversation and fellowship that crafting always inspires.

Cheers Dallas



"Simple Life Hacks"

Brought to you by thelmahouse.nz

"Fold and store sheets inside the matching pillowcase"



From Tapawera Area School and Community Library

The library will be closed for the school holidays, this is from 27th September to the 14th October. You could use this time to check out the catalogue on our webpage, this can be found at nz.accessit.online/TPW00(last two digits are zeros) . You can also check whether your children's books are overdue just by asking for their membership numbers. We don't worry about overdue books during the holidays of course but it's great if they arrive back during the first week of term.

Talking about overdues, we do get a great response to our automated overdue notices. We know parents really try to help their children find their missing books and we do appreciate it.

One of our collections that I think would interest parents is in our Young Adult section relating to all the concerns that a teenager might have. This covers so many different areas and I'm sure would make great reading for anyone with teenagers. You'll find them on the top shelf in the YA section.

With spring finally here, our gardening books cover everything from landscaping to herbs in pots and our cookery books cover so many cultures.

If you haven't come in for a browse yet then you need to come and see what you are missing. We are open from 10.30-1.30pm but members may obtain a key from the office during normal school hours and leave their details at the desk.

You will find us behind the tennis courts at the school.

Email library@tapawera.school.nz phone 5224337 ex 213

Our hours and webpage as above.

Happy Reading folks

Laree for the library team.



All Accounts Matter LTD

For all your accounting and tax needs!

If you are looking for a new Accountant, now is the perfect time! I would love to find out about your business and have a no obligation chat about how I can help you. So don't wait, call me now!

Sonia Emerson Chartered Accountant

GST | Tax Returns | Payroll | Bookkeeping | Cashflow Forecasting
Management Reporting | Rental Statements | Farm Accounts



ACCOUNTING SOFTWARE



2020/2021
Certified
Consultant



M: 021 221 1009 | P: 03 541 9005 | sonia@allaccounts.co.nz
367 Wakefield-Kohatu Highway, RD1, Wakefield 7095

www.allaccounts.co.nz



Servicing Tapawera, Kohatu,
Tadmor, Motueka Valley and
surrounding areas daily

"If its urgent, we'll be there!"

Plumbing - Gasfitting - Drainage
Blocked Drains - Leaky taps
Spouting - Hot water - Wastewater
system servicing

Phone, email or Facebook Messenger
us to book your Job or Free Quote

Phone - 03 543 8090

Email - info@tuffnell.co.nz

*"We thank all our clients for their
continued support"*



Tasman Bay Chiropractic

Keeping you in the game since 2002

Referrals, families and all new clients welcome

Visit our website or call for more information



03 544 4554 Monday-Saturday
tasmanbaychiropractic.co.nz

Find us on



PURPOSE HQ FITNESS TRUST

Gym / Adventure Club / Sports

A small community gym in the heart of Tapawera
-with a range of cardio, weights and boxing equipment

Offering a safe space for our members to train and improve their health and fitness
with 24/7 key access.

*-Personal Training Sessions available
-Training Plan options available*

MEMBERSHIPS

* INDIVIDUAL \$15/WEEK * PARTNERS (2people) \$20/WEEK
*HOUSEHOLD (16yrs + living at same address) \$25
*STUDENTS/SENIORS/CSC \$10/WEEK

Contact Renee on 027 344 0807
Sharlene 037 911 6817
or
visit our FB Page



Tapawera CONNECT

Senior's Snippets with Janine Leeden, 0277525975

What an interesting and surprising Tea and Talk we had at the end of August. Our theme was 'Show and Tell'. We learned so many amazing things about each other and uncovered some mysteries to be solved. From one's adventure on the Great Wall of China; enjoyable stories written by one of our locals; examples and explanation about a very artistic career in sandblasting glass; questions over the source of one found item (pictured below) and a request for information about a possible local artist. Do you recognise either of the below items? Can you complete the puzzle and fill in the blanks?



Above: can you tell us what it is?

Below: Do you have any idea who may have painted these beautiful bottles? These were gifted to a local couple back in the Forestry days. We'd love to know who it was.



Our monthly **Tea and Talk**, for over 65s, will be on **Tuesday 29th October 10-11.30am** at the Memorial Hall. \$3 for morning tea and some great company. We will have Community Law come from Nelson to speak to us about Scams.



The next **Wellby Talking Cafe** is on **Tuesday 9th October 2024**, where we will meet at the **Community Centre** from **10-11.30am**. Come along for a coffee & chat. (This is for adults of all ages!)

*Helen and Sara from Tasman District Library will again be at the Community Centre to offer their **Digi Drop-in session, at the Community Centre from 11am-1pm**. Are you aware of the different free apps and activities that you can access through your TDC Library membership? Each local library has a myriad of free activities and events happening. (Again this is for adults of all ages!)*

Sit and Be Fit is on each Friday at St Peter's Anglican Church, which runs from 10-11am. We start with some gentle exercise, some laughter, and a cuppa, all for \$3. Sit and Be Fit is part of the Falls Prevention programme endorsed by Nelson Bays Primary Health for ACC.



The September meeting was at Caroline's lovely late 1800s cottage with accompanying garden in Richmond. The cottage has a fascinating history. While they were renovating some real treasures were discovered in the walls, such as little leather children's shoes and an old bodice. Caroline made us so welcome, explaining the background of the property. When they moved in 16 to 17 years ago it certainly needed TLC, and it stood in a blank empty section. Now it is restored and surrounded by lovely gardens and nooks and crannies.

The raffles were won by Fay, Sue and Lorraine.

October's meeting is Thursday 10th at 11am at Margaret deMortons, 142 Little Sydney Rd, Riwaka. There are two entrances. We visited Margaret's garden in the winter and are looking forward to seeing it in better weather. It is a lovely extensive garden and well worth a visit. Please bring a chair, cup, and lunch. There will be a raffle and auction. The following week, the 17th, we are off on a bus trip to Murchison.

The Motueka Toy Library Garden Trail is on Saturday and Sunday the 19th and 20th October. Last year tickets were \$25 for the two days and well worth it. Tickets are usually available from Mitre10 Motueka or the Toy Library, Pah St, on the day.

Happy Gardening

Shirley

Providing gentle guidance when you need it most.



Simplicity Funerals

Simply respectful. Simply affordable.



Anna Loach
Manager / Funeral Director
Dip FD Reg. FDANZ

**NELSON & TASMAN WIDE,
WE'RE PART OF YOUR COMMUNITY**

Phone 03 929 5145 | 276b Queen Street, Richmond
nelson.simplicity.co.nz



Tapawera Community Hub

Summary of Information slides presented at the 10th September community hui, hosted by TDCC

Welcome to this Tapawera Community Hub information evening hosted by your TDCC.

We have summarised key Hub information on these slides, further information is posted on the walls of this room, and representatives (with labels) from our two main partners TDC and Tapawera Connect, are here with us this evening to answer questions.

Please provide feedback and questions using stickies on the whiteboard.

A community need has been identified for warm, comfortable and welcoming spaces for people to gather and find support and information.

We need fit-for-purpose spaces for use by service providers to meet the needs of our community. With the rising cost of living, having services and support available locally is even more important.

The Feasibility Report established the need for a fit-for-purpose community centre in Tapawera.

The new Hub will be a community meeting place; space for people to drop in; a venue for smaller group meetings and training or skills workshops.

There will be provision for existing and expanded community health and social services; a workspace for community coordinators; and space for the community Op Shop.

Even with major upgrades or renovations to existing facilities currently used for community services and activities, they would not be satisfactory as a community centre.

The build budget is up to \$2.7 million. TDC has confirmed a 2/3 share of this (\$1.8 million) in year 2 of the current Long Term Plan.

The Department of Internal Affairs has confirmed \$510,000 towards the remaining 1/3 community contribution of \$900,000. The current community fundraising target is \$390,000.

Available funding leaves the community less than 15% to find through fundraising.

We are leveraging the support of TDC as an essential partner in the Hub project to ensure its success and substantially enhance its functionality.

TDC funding might be conditional on TDC holding the Community Centre title deed hence the intent to transfer the title if needed to the TDC.

The Community Centre is owned by residents and ratepayers of the Tapawera community, currently vested with TDCC then, if transfer occurs, vested with TDC.

We expect TDC to recognise the transfer of title as part of our 1/3 community contribution. Use of the new Hub and land by the Tapawera community will be guaranteed in perpetuity.

Even if the current Community Centre could be renovated we would still end up with a building that doesn't meet the needs of our community.

Replacing the current Tapawera Community Centre and the building of a new community hub on the same site is the best option for meeting the needs of the Tapawera community.

The Hub project recognises the significance to the community of the garden, the Gateway, the Kaitiaki Guardian Stone and the two historical buildings. A concerted effort will be made to retain these features, in consultation with the community.

The project team will liaise with interested community members about retaining items and features of the existing building, within the new building.

The project team will endeavour to retain historical memories.

TDCC values the role the Op Shop plays in the community and will make every effort to maintain this service in some form during the re-build. Please let us know if you can offer space.

We expect the new Hub will be managed by a committee of community representatives.

The Hub management committee will oversee operation of the Hub including fees for community and non-community use.

The development of a new community hub is an opportunity to provide a new fit-for-purpose facility for us all for the future.

If you have any queries, please do not hesitate to get in touch with Steve or Tim at TDCC:

tapaweratdcc@gmail.com, or contact

Tapawera Connect: Nicola- 021 250 6232, or Phoebe - 021 211 6730

WADSWORTH MOTORS LTD.

- Coach Charters & Tours
- Mini Bus Hire.
- School Transport
- Professional friendly drivers
- Members of the Bus & Coach Association

Over 100
Years of
Service

wadsworthmotors@xtra.co.nz
100 Main Rd, Tapawera
www.wadsworthmotors.co.nz

027 4873167



Harcourts Rural

PLATINUM BLUE LIMITED LICENSED AGENT REAA 2008

Your Local Rural and Lifestyle Experts

Can you believe Spring has sprung!

It looks like we are ready for a great season; the last of the cold weather has been and gone, banks are certainly making some positive moves with interest rates continuing to fall and we are seeing an increase in activity when it comes to buying and selling.

If you're considering selling your Rural or Lifestyle property, talk to us today to see how we do things differently.

TOBY RANDALL

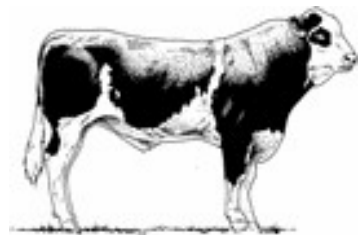
027 233 9170 | toby.randall@harcourts.co.nz



Gillespie—1

MAF approved

Home kill butchery



03 547 7746

Butcher / journeyman

Specializing in quality small goods

Factory: 111 Bolt Rd, Nelson

Community Connectivity Survey

Survey - How are we doing?

Out of 68 responses (so far), only 11 households are 'Very Happy' with their internet connection. Surprisingly only 2 out of the 7 households in the village gave this rating. See results to date:

<https://mike.greenkiwifarm.nz/15sep24>.

Survey extended

Great information received - thank you. Let's continue until we get 100 responses. Some locations are not on the board yet, see above.

Feedback to your provider

In conversation, people mention their internet drops out. Unless providers are given 'feedback' and made aware there are problems, they will have a false sense of reality. The survey will provide 'feedback', but households can also call their ISP.

I doubt that you want to wait on the phone, listening to the same song come around a second time - usually national providers.

Some organisations treat their customers with contempt. But hang in there, you are providing feedback to improve their service. Service that was agreed when you signed up. Service that you are paying for with your hard-earned money. Service that causes you frustration every time it hiccups.

Change providers

Internet connection made through Chorus infrastructure (copper or fibre) can easily be changed. Kiwiwif (local company) is an option for those with fibre connection. Number portability allows you to change mobile providers and retain your number. Rural Connectivity Group (RCG) cellular towers have all the three telcos present, so change to another. If you rely on a dedicated tower, then your options may be limited.

Change technology

We have a number of local providers; Kiwiwif, Power Wireless, Dovenet, ThePacific.Net. National providers; 2Degrees, One NZ, Spark / Skinny. These providers cover all the technologies; fibre, fixed wireless, cellular, copper. If your not happy, spend some time looking for alternatives. I always look for local solutions first. We need to put money into the local economy to grow local businesses and in turn the infrastructure.

Local suppliers generally provide more personal support. They don't have the money to invest in customer avoidance technology; call centres, looped music and AI and they probably **do** want to hear from you, and your call is **important** to them.

LEOS (Low Earth Orbit Satellites)

Starlink is the third largest internet provider in rural areas. It is a disruptive technology, like AirBNB, Uber and AI. Do we grow our local and national industries, or take the easy way out and send money overseas. Every dollar we spend is an important decision.

LEOS are not good environmentally, it's taking money from our local and national providers and repatriating it overseas, and to toxic characters like Musk. Now Musk believes in "free speech", so he shouldn't be too upset with these words.

Talk to our ground based local and national providers first. Give them the opportunity to provide your service. But in some cases Starlink "may be" the only option.

Cellular tower near Tui

Pending funding approval the Rural Connectivity Group (RCG) has scheduled the build of its site at Tui for mid-2025. Fixed Wireless will be used to backhaul the data to Tapawera. Meaning, Fixed Wireless (Kiwiwif) will be available around Tui as well as mobile coverage.

Old Sow - the old fire lookout

I spoke with the Operations Manager, Mount Campbell Communications. They already have a presence on the Old Sow, but no internet gear - early days.

Chorus out and about

Chorus have been busy at the Tadmor cabinet, the 'fridge' as described by some people and in the village. Some improvement on the copper network has been detected.

Copper alive and well

There is no withdrawal plan for the rural sector. See link below for more details.

mike.greenkiwifarm.nz/references

If you haven't completed a survey, please

Do It Now! - thank you.

mike.greenkiwifarm.nz/survey

Mike Drake



From the Principal's Desk

Tēnā koutou e te Whānau ki te Kura o Tapawera

Everyday Matters - Attendance

There's a clear connection between attending school regularly and doing well in the classroom. Higher levels of educational achievement can mean better health, higher incomes, better job stability, and more community participation, which makes society more substantial and more connected. Students aged 6 to 16 are legally required to attend school every day. It's everyone's responsibility to ensure that our children attend and engage in learning when they start school.

At Tapawera Area School, we are committed to supporting students and their whānau who attend regularly. Our target is: 70% of our ākonga will be attending school regularly (attending more than 90%, an average of 9 days a fortnight.) While our Term 2 2024 result is only 59%, and our target is 70%, we can celebrate that our attendance figure is 10% better than Term 2 2023. Also, our moderate absences (only 70% - 80% attendance) are at 8%, down from 15% in Term 2, 2023. Overall, we have had improved attendance in the last year. The New Zealand national attendance for term 2, 2024, was 53.1%, which means we are above this.

Some interesting information from the summary:

- The highest day of attendance during Term 2 was, on average, Monday, and the lowest attendance was on a Friday.
- Our Year 6 students had the best attendance in Term 2, with all Year 6 students attending over 90% of the time.
76% of our students were on time for class.

Thank you for your continued support in ensuring students make 'every day count' and are attending school regularly (90% or more of the time) If you need any help or would like to speak to someone about your child's attendance, please contact the classroom or homeroom teacher.

Congratulations to Vince Fox who has won a position at Motueka High School for 2025.

We will farewell Vince at the end of the year.

Leavers and New Enrolments

If you know your child/ren are not returning to Tapawera next year, please let us know asap as it impacts our staffing and planning. Likewise, if your child is starting or you know children in the community who will be starting with us, please let us know. The more information we can have, the better we are prepared to meet students' needs.

Teacher Only Day Term 4

There will be a Teacher Only Day on Friday 15th November. This is a Ministry directed day. Staff will be looking at the Science of Learning and the new English and Maths curriculum. Thank you for your support with keeping your children at home on this day.

Structured Literacy

As you will be hearing in the media, our government has mandated the structured literacy approach from Year 0-6 as of 2025. A structured literacy (SL) approach emphasise a highly explicit and systematic teaching of all important components of literacy. These components include both foundational skills (e.g., reading, spelling) and higher-level literacy skills (e.g., reading comprehension, writing). Tapawera is in a great position to continue to implement structured literacy. Year 0-2 has been implementing this approach for a number of years. We are ready for this to extend to Year 3-4 next year and training will be happening for levels above this. Well done to Sabine and her team for their mahi in this space and supporting our learners to be successful in early literacy. The results and progress is amazing. We will share some of this information later in the year.

Parents Vaping during Pick up and Drop off

Every school in New Zealand is smoke and vape-free! This means anyone on school property is prohibited from smoking and vaping at all times. We have noticed some whānau vaping on the school site during drop-off and pick-up. Please respect our school as a smoke/vape-free zone and abstain from this while on the school site.

The Power Challenge Activities in Room 6

Over Term 3 we are discovering the amazing phenomenon of electricity and learn how it's generated, moved and used across Aotearoa. We are learning about working in groups and power sharing ideas.

Here we are sorting cards to show how electricity is generated and how it gets to our homes and learning about electrical circuits.





The power of POWER SHARING ideas and working together to reach success. We are also building Balloon Cars to show the transfer of energy. Check it out [How to Make a Balloon Powered Car...Very Simple!!](https://www.youtube.com/watch?v=9gsce-DPAH8) <https://www.youtube.com/watch?v=9gsce-DPAH8>



More Power Challenge Activities in Room 6

Room 6 is learning what it is like to be engineers. We built turbines and then changed variables like fan speed, number of blades and how far the turbine was from the fan. We also used solar panels to light up the 'town'. We were super lucky to have Mr Mark Quinney coming to help us with this learning too!



Get2Go Adventure Race Day

A team of Year 9/10 students participated in the Tasman Get2Go along with 12 other schools. We started at the Appleby ponds with a paddle boarding challenge, almost



everyone took a swim but that just added to the fun. Then we were off to Rabbit Island for a Mountain Bike relay with an added problem solving task. Unfortunately, a couple of mechanical issues made this even more of a challenge! Then we finished with an Orienteering/Rogaine course at Rough Island. It was pretty much non-stop all day. For us it was all about teamwork and supporting each other through the tasks. (Teachers were not allowed to help or offer advice). We passed with flying colours! Thanks to all involved for your efforts and positivity.

Wig Wednesday

A huge thanks for the donations to Child Cancer as we celebrated WIG WEDNESDAY!!!



Disco Fun

Wow !!Thanks for supporting our disco last week. Well organised year 9-10s, hopefully this will help fund your camp at the end of the term. Well done! It was great to see so many happy parents and students.



BinGo Bins
DRUM & WHEELIE BIN HIRE

Craig Fry "Cracker"
Owner/ Operator

027 761 0240
bingoriwaka@gmail.com





Market Day

Thanks for your support at Market Day!! Also a great Art Exhibition from our seniors. Great effort. Our junior Kapa Haka group performed also! Tino pai!!



Ki-o-rahi Tournament

On the 11th -13th September some students, Alyse, Kiana, Taine, Sarah, James, Bronco, Shakaia and Roman went down to Christchurch to compete in the South Island Ki-o-rahi tournament. We were a combined team of Tapawera and Murchison students. We learnt some new rules at the start of the tournament and adjusted to them pretty well and quickly. We got through the first day winning 3 games and only losing 1. On day 2 we lost a couple of games but we came away with 1 win, so this meant we ended up playing for 5th and 6th against Cashmere who we had previously played and only just won. We all played well and

put a big score on them which meant we came away with 5th place out of 12 schools. Bronco and Sarah got selected into the tournament team. Thankyou Mr Haunch for taking us, we appreciate you heaps.



Rugby 7's Tournament

A group of 8 students went and played rugby 7s against Motueka/Moutere schools on Tuesday 17th September. They all played their absolute hearts out, having only 8 players meant there was minimal time off for everyone. We played 5 games in the round. Won 2 (Parklands and St Peters), drew 1 (Mapua) and lost 2 (Lower Moutere and Brooklyn). This meant we were playing off for 3rd and 4th against Mapua who we drew against in the pool rounds. All students were very tired when this game came around but they all went out with everything they had left, putting in a good fight using the skills they know and have learnt to come away with the nail biting win 4-3.

We were very lucky to have our very own Mako player Sarah Jones come along for the day and coach the team, thank you Sarah and we even got a photo with the Ranfurly Shield.

What a great day out this was and they should all be proud of their efforts.



Basketball Skills

On 18th September we were lucky enough to have Kaleb Chamberlain from the NBS Nelson Giants basketball team come and join us for the day and do some skills with the years 0-10 students and our ORS fitness group. All our tamariki had a lot of fun today and came away with some new skills and games to play with their classes/year groups.



Tapawera Store and Boarding House



The Tapawera Store / Boarding House was built by Mr McMahon and leased to Bill Greep in the early 1920s.

This new boarding house/shop was built of concrete, (the four outside walls and the two passage walls), with double brick division walls, matai timber floors, an iron roof and a full length passage from front to back two metres wide. This type of construction gave a warmer interior in the winter and cooler in the summer. Both the front and rear had full length verandas and at a later date a laundry and toilet were added to the exterior on the south western corner. When first built, the building consisted of a storeroom, shop, dining room, kitchen, bathroom, lounge and probably 6 bedrooms. A "long drop" toilet was located five or so metres from the western wall.

An oil store was located approximately where the Kiwi Station is today. It contained oils that were pumped into bottles from 12 gallon drums, turpentine and kerosene in 44 gallon drums and methylated spirits in 4 gallon tins. As 'Dangerous Goods' they had to be located a certain distance from the main building.

Electricity did not come to Tapawera until 1952. Prior to this lighting was provided via a gas (carbide) generator sited between the house and the road.

The kitchen had a coal range called a "Glow-Worm" modelled on the famous "Aga" stove, but of much inferior quality. It had to be fed with the correct coal or it would sulk and not heat up. This stove was finally replaced with a second hand "Shacklock" after having to get up on the roof too many times during the winter to clean the soot out of the chimney.

Store Owners and approximate years of occupation were: Bill Greep 1922 – 1949 (originally leased then purchased), Bob Wadsworth 1949 – 1951, Ron Haisman 1951 – 1953, Gordon & Elsie McGowan 1953 – 1958, Trevor Win 1959 – 1962, Cor van Den Elzen (also known as Cor Carter) 1962 – 1970s and Mr Blackett.

The boarding house and dining room was also used by passengers who came out by train. When the Duke of York (to become King George VI in 1937) travelled on the train in 1927, from Nelson to Glenhope, he asked to go there for tea.

Papers arrived Monday to Friday on Wadsworth's bus. Monday, Wednesday & Friday was via Dovedale and Tuesday & Thursday via Spoons. The Saturday paper came initially via train, but when that ceased the owner had to travel to the Kohatu Hotel to pick them up. As the train station was right across the road it was a two-minute job, as you could hear it coming. The trains ran once a day Monday to Thursday and twice a day Friday and Saturday. No train on Sundays.

Ice-cream was a problem freighting as it was at least a two-hour journey and the goods were stacked in a canvas bag. Many a time a runny mess was all that was left in the bottom of the canvas bag!

A delivery service operated in the 60s. Shop clients would ring their grocery orders to the shop the day before delivery was due and these items would be placed into cartons. On the delivery day the van was loaded up with the boxes, along with a small selection of all items the shop sold. The first van was a 1937 Chevrolet ex Crouchers Bakery in Richmond. The second and much larger van was an International D series, purchased from the Ngatimoti Garage. It was previously owned by Vickerman's Store in Motueka and the shelving that it had installed for the groceries was restored. A new garage was built on the river side of the store, at the front, for the larger van with room to also do woodwork and metalwork. The van ran up to Fargher Brothers at Rakau, Bints in Stanley Brook and Drummond's in Glenrae. Also to Captain & Mrs Perrine Moncrieff's in the Baton when in summer residence.

This historic Tapawera building that has served the community well for over 100 years is now being threatened with demolition.



Photo taken through the railway station gate
(now Tapawera Four Square)

Book Discussion Group

Meet: 4th Thursday in month, 10am
 Contact: Paula Davis ph. 5224341

Federated Farmers

Contact: Harry Matthews - Field Rep -
 0275078901

Golden Bush Garden Club

Meet: 2nd Thursday of month
 Contact: President, Linda Milson
 02102510945, or Shirley Percy 5224924

Golf

Meet: every Sunday, Ladies 9 hole
 every Tuesday
 Contact: Gary Oldham ph. 0278080578

Historical Society

Contact: Barbara Carleton ph. 5224317

Informer

PO Box 15 Tapawera
 Email tapawerainformers@gmail.com

Justice of The Peace

Peter Phillips ph. 5224313
 John Ellis ph. 021 522429
 Brent Hodgkinson ph. 5224381
 Francine Currie ph. 5224245
 Susan Fenemor ph. 0275224009 (text
 during school hours)

MENZSHED

Contact: John Wilmshurst ph. 5224616

Netball

Contact: Susan Fenemor ph.
 0275224009 (text during school hours)

Ramblers

Meet: each month
 Contact: Shirley Percy ph. 5224924

Shedwood Hall bookings

Contact: Tania Higgins ph. 5224587

St Andrews Church Stanley Brook

Services every Sunday. Cup of tea
 afterwards.
 Contact: Lee Winter ph. 5224160

St John – Tapawera

For emergencies Dial 111,
 Email info@stjohn.org.nz

Tapawera & Dist. Community Church

St. Peter's Tapawera: no services at
 present
 Contact: Church office 03 541 8883
wakefieldanglican.@xtra.co.nz
 Urgent enquiries to Andrea 0024169386

Tapawera & Dist. Community Council

Meetings: 3rd Tuesday of month,
 7pm Tapawera Community Centre,
 email: TapaweraTDCC@gmail.com

Tapawera Community Centre

Email: Nicola Allan
nicolaallan434@gmail.com or
TapaweraTDCC@gmail.com

Tapawera Connect

Contact: Phoebe Quinlivan ph. 021 211
 6730 or 522 4929, email:
tapaweraconnect@gmail.com

Tapawera Creative Fibre

Meet: every Wednesdays, 10am-2pm,
 Memorial Hall
 Contact: Dallas Robinson ph. 5224984

Tapawera Food Bank

Contact: Suzzi Lankshear ph.
 0277491063

Tapawera Jujutsu Club

Contact: Tony Hammersley ph. 5224609

Tapawera Music/Country Music Club

Meet: Alternate Sundays, Tapawera
 Hotel 7:30pm
 Contact: Elaine Douglas ph. 5418612

Tapawera Op Shop

Open: Tue, 11am-2pm, Wed 10am-2pm,
 Sat 10am-2pm
 Contact: Amanda Beer ph. 0278024612

Tapawera Playcentre

Meet: Mon & Thur, 10am -12:30pm
 Memorial Hall ph. 5224456

Tapawera Rugby Football Club

Bookings: ph. Judy Benjamin 5224445

Tapawera Sport & Recreation Society

Contact: Judy Benjamin ph. 5224445

Tapawera Volunteer Fire Brigade

Contact: Dean Millar Chief ph.
 0279651399; Ted Oakly Deputy Chief
 ph. 0210704033

TAS / Community Library

Mon-Fri 10:30am-1:30pm. Contact:
 Lareen Bonnington ph. 5224149
 Library ph. 5224337/ext. 213

TESSI

Contact: Bruce Whyte ph. 5224550

Toy Library

Open Monday or via arrangement:10:30
 -11:30am contact Jan Barker:
 0273915424 or 5524984

Visual Arts Society Tapawera

Contact: Dallas Robinson ph. 5224984

**What's on
October**

- 9 Tapawera Talking Café, 10-11:30am, Tapawera Community Centre
- 9 Digi Drop-in Session, Community Centre, 11am-1pm
- 10 Garden Club, 11am, 142 Little Sydney Rd, Riwaka
- 15 TDCC monthly meeting, Community Centre, 7pm
- 17 School/community garden working bee, 8am - 6pm
- 17 Starting a Vegetable Garden from Scratch workshop, School & Community Garden, 9am-12pm
- 20 Articles for Informer close 5pm
- 29 Tea and Talk, Memorial Hall 10:00am - 11:30am

**GP & Nurse at
Tapawera Clinic**

(during school term time):

GP clinics – Mondays
 9am – 12 midday

Nurse clinic – alternate
 Tuesday mornings - phone
 541 8911 for dates

Wakefield Police

Constable Jamie White –
jamie.white2@police.govt.nz
 Constable Matthew Berquist –
matthew.berquist@police.govt.nz
 Non Urgent (CRL) – Call 105
 Happening Now – Call 111