

Tapawera Community Hub Public Information Session

Tuesday, 10 September 5-8pm at the Community Centre

Tapawera & Districts Community Council is hosting a drop-in session with representatives from the project's three key stakeholders - TDCC, Tasman District Council and Tapawera Connect - present to answer any questions. John Ridd (TDC Executive Team) and Stuart Bryant (our Ward Councillor and Deputy Mayor) will be present to represent TDC.

We will have a Powerpoint series of information slides playing on a continuous loop, and will have other material displayed around the main room.

Everyone is welcome to come along, to check out what is proposed and give your feedback for as long or as short as suits you.



New Community Hub/Centre update:

Early August Geoff Proffit (TDCC), Phoebe Quinlivan (Tapawera Connect) and Eva Lawrence (Community Led Development partner and superstar from the Department of Internal Affairs) visited six Community Hubs in the Wellington region to get some advice and learn the do's and don'ts of creating a well activated and utilised Community space. We took lots of photos and notes and have some great learnings such as 'make sure you have great storage!'

Later in September, a number of community members including Kate Radloff, Raewyn Cruttenden, TDCC members and a couple of the Tap Connect crew will visit some of the community spaces in the Nelson Tasman region over the course of three days, including Motueka, Nelson, Murchison and St. Arnaud. We will feed back any learnings from these visits to the team designing the new hub.

This will accompany all of the feedback and input we have recorded from the community in the meetings and conversations we have had over the last few years. We are writing it all down and passing it all on. We will also be

approaching groups and individuals one on one again to make sure we have captured the needs and ideas of the community and will feed these through. If something pops in to your head that you would like us to pass on, please email us: tapaweraconnect@gmail.com, and if you would like to attend the hub visits later in September, let us know too!

Here are some photos that inspired us:





**Servicing Tapawera, Kohatu,
Tadmor, Motueka Valley and
surrounding areas daily**

"If its urgent, we'll be there!"

**Plumbing - Gasfitting - Drainage
Blocked Drains - Leaky taps
Spouting- Hot water - Wastewater
system servicing**

**Phone, email or Facebook Messenger
us to book your Job or Free Quote**

Phone - 03 543 8090

Email - info@tuffnell.co.nz

***"We thank all our clients for their
continued support"***

RURAL POST, RD 2 Wakefield

Contact Nick & Jackie Costley for all your RD 2
Wakefield postal needs.

Including prepaid envelopes, stamps, courier
items and local freight from Wakefield, Dovedale
and Tapawera. Prescriptions from Wakefield.

Phone 0275418581

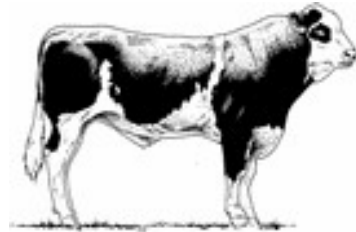
Mark & Tania Gill
T/A MTJ Transport
RD2, Nelson
NZ Post Rural Contractors
Servicing
Motupiko-Korere-Kikiwa-Tophouse-St Arnaud-Glenhope

For all your Postage, Milk & Courier Freight
Operating 3 Days Weekly
(Monday-Wednesday-Friday)
Departing Nelson 8.00am
Phone 546 6295

Gillespie—1

MAF approved

Home kill butchery



03 547 7746

Butcher / journeyman

Specializing in quality small goods

Factory: 111 Bolt Rd, Nelson

Material & adverts for Informer

All material is to be sent to either:

Informer, PO Box 15, Tapawera, 7055
or email- tapawerainform@gmail.com

To be received by 5pm
20th of the Month

If emailing a word document please send in Word as an
attachment.

If sending an advert please save as a jpeg before sending.

Please check your emails to see your article/advert has
been received as sometimes there needs to be alterations.

Advertising rates for Informer

Standard ad	Pay monthly	Pay annually
1/4 page advert	\$32.50	\$286
1/2 page advert	\$45	\$396
Full page advert	\$65	\$572

Adverts that require editing may cost extra

The Informer is produced and published by the Tapawera and Districts
Community Council, PO Box 15, Tapawera, 7055;
email: tapawerainform@gmail.com
Circulation 635
Editor: Gill Hammersley
The Editor and Publisher try to ensure information published is truthful

and accurate, but do not accept any responsibility for errors or
omissions, or for any consequences of readers' relying on the
information published. Opinions expressed by contributors may or may
not be endorsed by the Editor or Publisher.
All material submitted, whether editorial or advertising, is accepted at
the discretion of the Editor and the Publisher.

Tapawera CONNECT

Senior's Snippets with Janine Leeden

We've been enjoying some beautiful sunny winter days but the lack of rain is somewhat concerning as we head into spring and summer.

A group of us ventured into Nelson on a lovely August winter evening to experience the Illuminate Festival. What an amazing event that was, with thousands attending every night over the 6 nights it was held (over two weekends). It was so lovely to see so many young families out and about and enjoying the wonderful lighting displays. **It was great to be able to hire the Nelson Tasman Community Transport Van to travel together.** This saved on cost as well as gave us extra time to socialise.



The next **Wellby Talking Cafe** is on **Tuesday 10th September 2024**, where we will meet in the **Community Centre from 10-11.30am**. We had a beautiful sunny morning on the verandah for our August get together. Come along for a coffee & chat.

(This offer is NOT just for Seniors!)

*Helen and Sara from Tasman District Library will again be there to offer their **Digi Drop-in session, at the Community Centre from 11am-1pm**. Are you aware of*

*the different free apps that you can access through your TDC Library membership? The girls can sign you up to become a member of TDC libraries – you just need some ID – and can then guide you through setting up access to audiobooks, eBooks, movies and many other free apps that are paid for through your library membership. **(Again this offer is NOT just for Seniors!)***

Sit and Be Fit is on each Friday at St Peter's Anglican Church, which runs from 10-11am. We start with some gentle exercise, some laughter, and a cuppa, all for \$3. Sit and Be Fit is part of the Falls Prevention programme endorsed by Nelson Bays Primary Health for ACC.

Our monthly **Tea and Talk**, for over 65s, will be on **Tuesday 24th September 10-11.30am** at the Memorial Hall.

Be yourself; everyone else is already taken!
Oscar Wilde

Volunteers please - School/Community Garden Restoration

'What a great community we have - everyone just chips in when needed'. That was a recent comment from Sabine Reinert, one of the school staff driving restoration of the school and community garden. She and the garden team hope that many of our community will 'chip in' and volunteer their time and effort when Mitre 10 brings its Helping Hands team to Tapawera, to spend a day re-establishing a thriving garden in the school grounds.

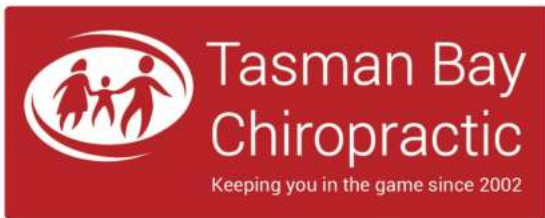
Mitre 10's Helping Hands national programme donates materials and a team of their staff volunteers to work on projects that help Kiwis love where they live, work and play. It depends on local community volunteers working alongside the Mitre 10 team. With Mitre 10's help our school and community garden will be brought back to life with new gardens, planting and infrastructure that will result in an excellent community-wide resource. **Its success will depend on input from local volunteers - that's you and me.**

Key dates for your volunteer calendar - please let Sabine know if you plan to come to either/both.

sreinert@tapawera.school.nz

Thursday August 22, 12 noon - ~ 3pm Planning meeting, doing some preliminary set up work

Thursday September 19, 8am - 6pm Mitre 10 Helping Hands day. As many volunteers as possible please. Come and go as you are able. BBQ




Referrals, families and all new clients welcome

Visit our website or call for more information



03 544 4554 Monday-Saturday
tasmanbaychiropractic.co.nz

Find us on  



voltz
ELECTRICAL LTD

Julian McGaveston
Registered Electrician

For all your domestic, commercial and rural electrical needs.

T: (03) 522 4488
M: 021 566 645
F: (03) 522 4698

E: voltzelectrical@silkweb.net.nz

2227 Wakefield Kohatu Hwy. RD2. Wakefield 7096

WADSWORTH MOTORS LTD.

- Coach Charters & Tours
- Mini Bus Hire.
- School Transport
- Professional friendly drivers
- Members of the Bus & Coach Association

**Over 100
Years of
Service**

wadsworthmotors@extra.co.nz
100 Main Rd, Tapawera
www.wadsworthmotors.co.nz

027 4873167





Tapawera Netball Club August News

This weekend saw our Tapawera Hotel team finish 3rd in Collegiate 10 Section

A. They have had a fantastic season this year, you girls should all be proud. Tapawera Blue Rock Hops and Fry Contracting have their last game on Saturday 24th August, so come along to support them one last time.

You are all invited to attend our prize giving, it will be held on Sunday September 1st at the Tapawera Rugby Clubrooms at 2pm.



Tapawera Blue Rock Hops

Thank you to our sponsors Blue Rock Hops Ltd for the support of both Glen & Sara and Brian & Sarah Clayton.

Belinda Grice (Coach) Comments:

"Our very first game in round 2 against a very polished and fast Prices team down from Senior 1. The first ¼ was close, goal for goal ending with Tapawera trailing by 1. Unfortunately by the 3rd quarter, we saw the Prices team pull away. Final Score 34-25 to Prices **POD to the whole team for their work ethic and attitude on the court.**"

"Today saw us play Jacks and nice turn around from last week. Down by 5 at the first and second quarters the team worked really hard to be up at the end of the third quarter by 3. Final Score 37-36. Some great feeding into our shoots by our midcourt, and our shoots were putting them up every time. Stand outs today were Liv for her efforts at driving and some stunning feeds with **POD going to Tegan for her strength under the hoop, rebounds and great shooting.** Thanks to Ange, Shimiela and Laura for doing bench, Tarn for her help on the sideline."

"Today saw us play Stoke and it wasn't our day losing 27-20. A couple of injuries today and a bit of wayward passing meant we couldn't quite pull away when perhaps on our better days we would have had a win in hand **POD to Sam for her consistent hard work at centre**, also a special mention to Shakaia and Liv for playing different positions today and giving it a good crack. Looking to finish our last few games nice and strong."



Tapawera Fry Contracting

Thank you to our sponsors Fry Contracting, Kevin and Andrew Fry

Laura Fry (Coach) comments:

"Prices Whero, thank you to Karla and Barbie for being our reserves today! We had a much better game today. Kiahna and Gemma were a dynamic due. Kate and Lane in WD both had a great game. Shimiela had a great impact on the game in C and WA. Aroha in WA and C had an amazing defence performance, Katie had a stellar performance for the first half. Karla took the court for us again in C and GA.

Some excellent feeding into Katie and Lissie. For someone who doesn't practise with us she sure can read players and their strengths. Lissie at GS held her ground against a bulshy GK. We came away with the win 20-12"

"Marist Gold had a full team and a coach this week which made a huge impact on their game and morale. Unfortunately we didn't beat them this time. It was a hard game from both sides. Well done to all the girls today for their mammoth effort today. Aroha stood out for her driving, bringing the ball through the mid court and quick feeding. Lissie for her shooting and moving and Kiahna for her great defence and turnovers. Final Score 12-29 Marist **POD to Lissie.**"

"Suburban came down to our grade from Senior 5. Nearing the end of the season, the injuries and illnesses are taking over. Lissie and Katie were backing each other up, working well all game to make the opportunities count! Lissie had her best shooting stats today and most of her shots were from quite far out from the hoop. Katie also had a great shooting game today. Barbie and Kiahna held the defence circle so well in the first half, gaining lots of rebounds and intercepts. Katie did great at WD. Lane, Aroha and Shimiela swapped in and out of C & WA as we battled injuries. All three ladies had a great game, giving it their all. **POD today is going to Lane and Kiahna, Kiahna for her excellent defence work, in the circle and in mid court, bringing the ball through the mid to our attackers and Lane for her strength in feeding, taking whatever position I need her to without complaint and doing her best in every aspect.** Final Score 27 - 15 to Tapawera Fry."

"Prices Whero - Our history with this team has been up and down from the get go. Firstly I would like to thank Lane for stepping up and being coach for this week/weekend you did an awesome job! The first 3 quarters of the game we played well with a 2 point lead, lots of driving and dodging. In that last quarter prices really stepped up and with a few off passes, stepping etc saw us loose the lead however I am extremely proud of how the team played. Final Score Prices 19 - 17. **POD to Kiahna for her defence work, zones and always there for the reset, well done!**

"Today we battled hard for a full 40 mins. We attempted a variety of techniques however the defence of Marists GD and GK was formidable. Lissie and Katie worked extremely hard to little avail. I'm proud of these two as they've grown through the season, working well together and playing to their strengths. Our own defensive campaign was very effective in the first half. Kiahna GD, Gemma and Kate sharing GK, kept the opposition's scores low with many intercepts and rebounds. Both teams were relatively even for the first half. Third quarter saw Shimiela attempt (against coaches pleas) to try her hand at WA with a recent ankle injury to add to her already existing knee issues. Shimiela played well. Aroha & Lane shared C, giving the opposition's mid courters a run for their money.



All Accounts Matter LTD

For all your accounting and tax needs!

If you are looking for a new Accountant, now is the perfect time! I would love to find out about your business and have a no obligation chat about how I can help you. So don't wait, call me now!

Sonia Emerson Chartered Accountant

GST | Tax Returns | Payroll | Bookkeeping | Cashflow Forecasting
Management Reporting | Rental Statements | Farm Accounts



ACCOUNTING SOFTWARE

myob

2020/2021
Certified
Consultant



M: 021 221 1009 | P: 03 541 9005 | sonia@allaccounts.co.nz
367 Wakefield-Kohatu Highway, RD1, Wakefield 7095

www.allaccounts.co.nz

HANDYMAN

- * General property maintenance
- * Clean out/tidy up
- * Water blasting
- * Gardening
- * Chain sawing
- * Repairs
- * Demolition
- * Any farm work

Fair hourly rate. Honest and hard working.

Local references available.

Please enquire to Jeremy Ellis (03) 522 4460

Tapawera Community Craft and Market Day

Last Sunday of the month



Across the road from 4 Square
on the village green, 10am to 2pm.



Bring along your crafts/produce
/unwanted items to sell.



Enquiries to Amanda Beer on FB messenger or via the Tapawera and Surrounding Valleys FB page.



Tapawera Netball Club August News cont.

Both bringing the ball through the court with efficiency and control, only to be met with a flurry of defensive plays when attempting to feed. Both ladies played very well, looking for their opportunities, working the ball around the circle edge and using their resets. Kiahna was in a battle of her own from here on. Her GA was using different tactics that as a coach, I'm glad I don't see from my team. Kiahna kept her head up, stood her ground and showed us her tenacity. Even getting straight back up from a blatant forceful push from the GA (refs looked the other way) and getting straight back into the game. Barbie helped to pick up Kiahnas GA in the goal circle, using her experience to free Kiahna up a bit more. **POD goes to Katie for her great attacking performance. Shooting most of our 12 goals, getting some intercepts and battling hard against a very talented GD. Katie was forced to change her techniques, even putting her favoured jumping style down and picking up a more front style attack. Her fast hands is what garnered us some small ground"**

We just want to say a huge thank you to **Aroha and John** from a **Collins Transport** for their sponsorship toward team hoodies for our team! Your support is so appreciated.



Tapawera Hotel

Thank you to our sponsors Tapawera Hotel, Brendan Gleeson and Shara Khan for the ongoing support of this team!

Toni Derbyshire (Coach) Comments:

"The girls had a tough loss today against the Waimea Kiwis. Waimea had a fast pace attacking team with excellent shooting percentages. Fair to say we had an off game and were a little rusty after the holiday break. **POD was awarded to Kasey for her persistent defence as GK 20-5 loss"**.

"Wow what a comeback game after last week. Tap Hotel team had a terrific win against Nayland College. 42 - 0. Some smooth mid court flow, top defence and near perfect shooting delivering great results. **POD to Keetah for her shooting skills."**

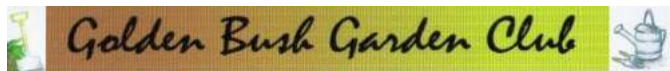
"This week we struggled to find our feet in the first quarter against Murchison. We had to fight our way back to try and close their strong lead. Our defence had to work overtime against a well skilled Murchison attack. The final result 11 - 17 to Murchison, with strong support and encouragement on the sidelines our girls never gave up, you girls are awesome. **POD to Atlanta for working tirelessly out at GD."**

"Awesome fun game to finish off our season today. We played Nayland College again, so we decided to change it up a bit and have a whirl at positions that the girls wanted

to try. With plenty of laughter and team flow we managed to stack up quite a few turnovers to come away with a big win 35 - 1. A huge thanks to Lynda Mitchell, our family supporters and of course our major sponsors Tapawera Hotel."

We have a Tapawera Netball Club Facebook page where we will update you on how our teams do throughout the season. We also have a new email address so feel free to reach out to us at tapaweranetballclub1988@gmail.com at any time.

Lissie Anglesey, Club Secretary
tapaweranetballclub1988@gmail.com



The August meeting which was the AGM was held at the Wakefield Hotel. Linda Milson is the new president with Anne Steele treasurer, Eve Heritage secretary with the committee being Francine, Charlene, Irene, Janine and Shirley.

Thank you to Kathy Whyte who has stood down after many years of being on the committee as well as president in the past.

The raffles of plants and hand lotions etc. were won by Maureen, Sandra and Leslie. We all enjoyed a lovely lunch and get together. The membership remains at \$5 annually. Payment is now due.

Next meeting is Thursday 12th September, 11am at Caroline's, 40 Hart Rd, Richmond. From Three Brothers corner, turn into Bateup Rd, Hart Rd is a continuation. It is a green and cream historical cottage and garden on the righthand side of the road. Please bring a chair, lunch and thermos. There will be a raffle and auction.

The Waimea Garden Club is visiting four gardens in the Tapawera area on Saturday 28th September and we are providing morning tea, so would appreciate help on the day from those who can. On 17th October there will be a bus trip to Murchison. The cost to financial members is \$10 and non financial members or visitors \$40. This includes morning tea and lunch and visiting five gardens. Hopefully there will be time for a short wander around the few village shops. We need to know dietary requirements. Pay at September meeting or online.

The Brightwater Horticultural Society is having their annual Spring Show on Saturday 21st September at the Brightwater Hall from 9am. There will be floral displays, a cafe, raffle and sales tables.

Happy Gardening,
Shirley

Providing gentle guidance when you need it most.



Simplicity Funerals

Simply respectful. Simply affordable.



Anna Loach
Manager / Funeral Director
Dip FD Reg. FDANZ

**NELSON & TASMAN WIDE,
WE'RE PART OF YOUR COMMUNITY**

Phone 03 929 5145 | 276b Queen Street, Richmond
nelson.simplicity.co.nz

I cannot knit socks ...

Technology

That was my reply to an elderly woman who was apologising for not being technology savvy. We all have different career paths; mine started with a degree in electrical engineering and then went into computers and programming, in avionics, jet engine control and digital communications. So technology has been part of my life for many years. It didn't include knitting socks; I don't apologise for that, and nor should people who find technology difficult.

Fixed Wireless

On August 14 I made a very satisfactory phone call; I cancelled our 2Degrees ADSL service. No more listening to tedious songs while I wait for an operator (over an hour sometimes), no more fence posts or gold mining operations cutting our internet connection.

In 2006 we extended our house LAN 200m using fibre, to a pole at the top of our property. We established a Fixed Wireless connection to Kohatu Hill radio; until trees grew around the tower, interfering with the radio link. This same pole now connects via Fixed Wireless to a Tadmor Saddle radio installed by another local company.

Rural Broadband Initiative 2 (RBI 2)

Kiwiwifi's current installations in the area had some funding from Crown Infrastructure Partners (CIP), part of the government RBI 2 to deliver Fixed Wireless internet to rural communities. I had to fell several 25m+ high pine trees to create a clear radio corridor. Townies don't have this type of "fun"; for them water comes from a tap, power is on tap and people come knocking asking if they want fibre connection. They can get on with life, taking all these services for granted. Rural life is different!

We want to get on with life too, however, for the last twelve years my life (like many others) has been interrupted by internet outages, sometimes taking days to fix. I've sent many letters to the government, Chorus, 2Degrees, Vodafone (now One NZ) regarding fixing copper faults. I have had long chats with various Chorus technicians, great guys, but working under less than ideal management conditions.

Suppliers in our area are; Kiwiwifi, Power Wireless, ThePacific.Net, Dovenet, Spark, One NZ and 2Degrees.

Copper

In order to clarify my thoughts about Chorus and copper infrastructure I contacted Craig Young, CEO of TUANZ.

Craig confirmed with me a number of facts:

1. Chorus are accountable for maintaining the copper infrastructure and fixing copper faults in a timely manner.
2. Chorus must maintain copper connections until a viable alternative is available for each household.
3. Copper end-of-life is likely to be in ten years, but there may be exceptions where this is extended.

I also mentioned to Craig, from my own experience and talking with others; Chorus doesn't appear to break any legs fixing copper faults. Chorus now charges if a technician visits pre-dig sites. Chorus appears to be happy for third parties to compromise the copper cable, reinforcing the idea that copper is not robust.

The other barrier for people to ask for a Chorus technician is the risk of being charged if the fault is in their cabling.

Low Earth Orbit (LEO) Satellites

Satellite is not a viable alternative to copper, except under exceptional circumstances, where Fixed Wireless and cellular themselves are not viable. This is currently under review by the Commerce Commission.

The high number of LEOs, their short life, their burnout and subsequent replacement impact negatively on climate change. Astronomers are not particularly happy seeing light streaks across their images. Do we want to send money and give control of critical infrastructure to a foreign company, where our government has no possibility of control?

New Zealand Starlink has lots of spare capacity and is reducing prices. These attractive prices may become less so in future.

Survey

TUANZ has the ear of the government and Chorus. Getting **feedback** from communities assists them greatly in arguing a case for more **investment** in the rural sector.

So please ensure you give me your feedback in the community connectivity survey. The deadline for responses has been extended to **September 15th**.

See mike.greenkiwifarm.nz to **complete the survey**. This website lists suppliers, a link to measure internet speed and other information.

Mike Drake

Version 1.2

WAIMEA AREA QUILT SHOW

SATURDAY 14TH SEPTEMBER
&
SUNDAY 15TH SEPTEMBER

WAKEFIELD SCHOOL HALL
EDWARD STREET

10 AM - 4PM DAILY
ADMISSION \$3.00

Cafe - Merchant Mall - Raffles

TAPAWERA ELECTRICAL

Tony Stephens

Registered Electrician

Ph/fax 5224257
0276249489

All electrical needs
Domestic & Rural
Wiring, faults, some home appliance repairs
New heat pump installations



Free Quotes
Competitively priced

Harcourts Rural
PLATINUM BLUE LIMITED LICENSED AGENT REAA 2008

Your Local Rural and Lifestyle Experts

When life gives you lemons—
make lemonade.
When the Real Estate market isn't the
status quo—
work with a Real Estate agent who
thinks outside the box.

Here's a snap shot of some of our most
recent sales across the top of the south
over the past few months.

Hard work and implementing unique
marketing campaigns are just some of
the ways that we do things differently to
get your property sold.

Considering selling, give us a call today
to see how we can get you that sold
sticker.

Team TOBY RANDALL
027 233 9170 | toby.randall@harcourts.co.nz

The Lady Tradie

Has your husband got a **round to it!**



Spring has sprung

and the grass has riz !

Do you wonder where a handyman is ?

Can't get one ?

Then call " Jen the Lady Tradie "

for all your outside spring clean-up jobs

* Gutters full of leaves;

* Lawns that are starting to bolt;

* Waterblasting those slippery paths

and all that spring growth that just might get
away on you.

* **Local Person** * **Referees Available** *

Consideration & discount shown towards Senior Citizens

FREE QUOTES

Contact Jennifer

Phone or text: 027 544 2663

After hours/leave a message: 03 522 4453

Email enquiries to: jentheladytradie@gmail.com



Our Local Biodiversity

Welcoming Back our River Nesting Birds

It's that time of year again when our river-nesting birds are back! The tarapirohe (black-fronted

terns) and tarāpuka (black-billed gulls) are heading inland from the coast to find the perfect spots to nest. It's fantastic to see them doing their bit for pest control in the paddocks alongside the river. And watching the tarapirohe dive into the water for a feed is so worth it!

As we welcome these birds back, it's perhaps a good time to consider how the New Zealand Threat Classification system works. This system shows us how our native flora and fauna are faring—some are doing well, while others are at risk of disappearing forever. For instance, while not all kiwi species are endangered, we are aware that our iconic Great Spotted Kiwi is at risk being classified as Nationally Vulnerable. However, would you be surprised to discover that in comparison, our tarapirohe are even more threatened, being

classified as Nationally Endangered - only one more category to go before extinction.

If our kiwi species started appearing in our community, we'd likely respond with excitement, respect, and care. Similarly, let's make sure we welcome our river-nesting birds with the same enthusiasm and protection.



Shedwood Bush Betterers

Visitors to 'Shedwood Bush Scenic Reserve' can walk native bush tracks that top out with unrivalled views of Kahurangi National Park. Shedwood Bush Betterers are a Tapawera volunteer group working to create a welcoming entrance to the reserve through a program of invasive weed removal and native tree planting. Old Man's Beard is rife across Shedwood Bush boundary trees and potentially threatens the whole Reserve if not dealt with soon.

A Community Agreement with DOC will see the group continue weed clearing (started under the Jobs for Nature project in 2022) until May 2030. This is a defining project that will turn waste into worth for the Tapawera community and we need your help. Contact Mark on 022 1316 139 or Martin on 021 160 8918 if you're keen to do a little to help preserve this wonderful local asset.



In the last couple of months, Tapawera Area School and Tapawera Kindergarten students helped with a small planting at Shedwood Bush. Here is a photo from the day when the kindergarten helped.

Get Growing for Food Security

- INCREASE LOCAL FOOD RESILIENCE
- SUPPORT TO GROW YOUR OWN FOOD
- GROWING FAMILY, LOCAL AND COMMUNITY KAI

Get ready for 'Get Growing'!

'Starting a vegetable garden from scratch' will be the first workshop of the Tapawera Get Growing workshop programme. It's designed for people with little or no gardening experience, to encourage them to start growing their own vegetables. Look for full details in the October Informer.



Celebrate Tasman's Welcoming Week 6 - 15 Sept 24



Paint and share WELCOME ROCKS.

Spread welcoming messages throughout our region!

Connect through fun craft activities.



Share photos on    **Welcoming Communities Tasman**




**TOWN & COUNTRY
VET**

"...for all creatures great & small..."

**Regular Tapawera visits
discounted mileage
T&Cs apply**

Ph 544 1200

info@tcvet.co.nz * www.tcvet.co.nz
25 Edward Street, Wakefield
35 McGlashen Avenue, Richmond

 **24 hour emergency vet**

**COME TO A
TALKING CAFÉ**

Connect with your community



Talking Cafés are an opportunity to meet people, make new connections and learn more about your community.

Pop in for a quick cuppa, or stay for a longer conversation with friendly people. All welcome, no bookings required.

Upcoming Tapawera Talking Cafés
 Tapawera Community Centre
 Tuesday 10th September, 10.00-11.30am
 Tuesday 8th October, 10.00-11.30am

For more details:
 wellby.org.nz
 or phone (03) 546 7681





**WELCOMING
WEEK**
TE WIKI O MANAAKI

Word Find

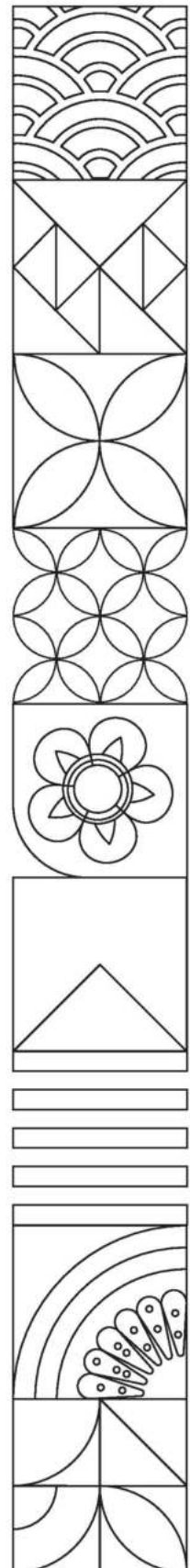
P	H	I	L	I	P	P	I	N	E	S	P	N	B
A	A	D	R	O	F	C	O	N	G	O	A	D	K
K	B	P	N	M	Y	E	M	E	N	D	F	U	N
I	W	V	U	Y	W	V	N	P	R	A	G	S	E
S	E	I	R	A	N	H	S	O	C	M	H	C	H
T	O	E	G	N	N	O	J	I	N	A	A	O	G
A	Y	T	H	M	K	E	R	Z	A	L	N	L	S
N	E	N	B	A	Y	F	W	I	B	A	I	O	R
W	C	A	S	R	A	E	R	G	Z	Y	S	M	I
B	U	M	Y	H	D	Y	S	B	U	S	T	B	L
U	A	O	T	G	S	O	M	A	L	I	A	I	A
S	D	U	K	E	R	I	T	R	E	A	N	A	N
A	O	I	R	A	Q	W	S	K	O	G	S	E	K
S	R	H	K	B	V	E	N	E	Z	U	E	L	A

Countries to find:

Afghanistan
Colombia
D.R. of Congo
Ecuador
Eritrea
Iran
Iraq

Jordan
Malaysia
Myanmar
Pakistan
Papua New Guinea
Philippines
Somalia

South Africa
Sri Lanka
Syria
Venezuela
Vietnam
USA
Yemen





COMMUNITY
TRANSPORT TRUST
Nelson Tasman

PASSENGER SERVICE

TAPAWERA TO MOTUEKA , WAKEFIELD , RICHMOND

Tapawera Transport Trial Routes - Winter Schedule

Weekly on Tuesdays - Tapawera -Richmond - Return route

- 9.30am Depart Tapawera Community Centre
- 9.40am Pick up from Kohatu Flat Rock Café (park your vehicle by War Memorial not Café)
- 10.00am Pick up Wakefield by Village Hall
- 10.30am Drop off by TDC for eBus connections and the Mall, Richmond
- 10.45am Drop off Richmond Aquatic Centre *
- 2.00pm Pick up Sundial Square, Richmond
- 3.00pm Return Tapawera (pickups/drop offs at Kohatu & Wakefield en route as booked)

* For passengers, Richmond Aquatic Centre is kindly offering discounted casual pool entry for \$4 or casual gym entry for \$10 which includes swim. Also discounted coffee prices!

Weekly on Wednesdays - Tapawera -Motueka - Return route

- 9.30am Depart Tapawera Community Centre
- 9.45am Pick up from Woodstock (by bridge)
- 10.30am Drop off by Motueka Library, Wallace Street
- 12.50pm Drop off at Rec Centre for Kickstart Programme** (1-2pm)
- 2.00pm Pick up Motueka Library
- 2.10pm Pick up Rec Centre (as necessary)
- 3.00pm Return Tapawera (pickups/drop offs at Woodstock en route as booked)

** Nelson Bays Primary Health is offering an 8 week course on wellbeing called 'Kickstart' from 1-2pm on Wednesdays at the Recreation Centre for \$3 a session. Call 0800 731 317 for details

Tickets - \$6 One-way - \$12 Return.

Volunteer Drivers do not handle cash

PAYMENT IN ADVANCE

You must call and pay for your seat

Motueka ISite 03 528 6543

We will be reviewing this trial at the beginning of June with the Trust, passengers, drivers and other stakeholders, to determine what we do after June

Tapawera Transport Trial - Courtesy of the Trust's small, hybrid, 6 seater, Wakefield Bus and Tapawera-based volunteers, offering a weekly transport service to both Motueka and Richmond for the winter months. We are grateful to Tasman District Council for financial support to the Trust and to Richmond Aquatic Centre for discounted prices and driver support.



We've had low patronage of our bus service over the winter although it's great that we've got good willing Tapawera volunteer drivers on our roster. Whilst the idea has been greeted enthusiastically, it's maybe to be expected that winter travel is less whether because of health concerns or lack of users and the word getting out. We've also had a few people registering as potential drivers for local groups so they can use the vehicle for trips. The Serena bus only comfortably takes six including the driver but is a hybrid vehicle and sharing trips to events is fun and good to organise.

We will extend the regular Tuesdays and Wednesdays trips to Richmond & Motueka respectively through September and October and they will run from the Community Centre at 9.30am returning at 3pm. You can now pay cash (\$6) one way on the day but it is better to book ahead the day before through the Motueka isite on 03 5286543 especially if you want to guarantee a seat. Regular travellers can put some credit with the isite and then if you are ill on the day, they're willing to give a credit. Given that the isite is open every day of the year except Xmas day, and weekends it's 9-2pm, we're very grateful for their support in handling the booking system for us as a community support service from them.

The Trust is having its AGM in Motueka on 16th September in the library community room at 7pm. All welcome and there's scope for joining by zoom. Call me on 03 5224411 if you're interested in attending or email admin@NTCTT.org.nz. We're also advertising for a part-time Trust Transport Coordinator with applications due by 12th September. Check it out on SEEK if you are interested!

There's lots of ideas and scope for having better public transport for residents and visitors to the Tapawera area. Now that the eBus service is six times a day return to Wakefield and four times a day to Motueka from Richmond/Nelson, which is a route service that the Trust started providing about five years ago, the Trust is keen to find the gaps. It would be great to see us piloting travel options for our Tapawera and Motueka valley community that can become sustainable in the future, whether commercial or not, and that we can adopt travel patterns that save our wallets and reduce our fuel emissions. Do take advantage of the service that we've set up. We're fortunate to have support from Tasman District Council to do this. If you come into Richmond, you can get a discounted swim at the Aquatic Centre too!

Jo Leyland, Trustee, Tapawera

Community Transport Trust Coordinator

The Trust is looking to contract a part-time Transport Trust Coordinator to manage the provision of transport services and associated travel initiatives of the Trust in our region, including the transport trial we have for Tapawera.

Please go to https://www.ntctt.org.nz/coordinator_position for more details. Applications need to go to chairperson@ntctt.org.nz by 12th September.

Wakefield and Districts Health Trust

The Wakefield and Districts Health Trust had its AGM for the year in July and is set for a productive year.

The Trust was established to be beneficial to the Wakefield and Districts Community by primarily, but not solely, maintaining a building adequate for the provision of medical services to, and for the benefit of, the community -this is the building at 12 Edward St that the Wakefield Health Centre and also District Nurses and Plunket operate out of. Many other health professionals also meet clients there for example Health Improvement Practitioners.

Benefit would also come by facilitating the enhancement of medical and health-related services to, and for the benefit of, the community, providing the community with access to medical providers and services outside of the Wakefield and Districts community. Also generally enhancing the health and wellbeing of the community.

This year the Trust is concentrating on a good deal of maintenance and some small upgrades in the building and of course there are 15 AEDs in the area to monitor and maintain. We are grateful for the community members we have that assist with monitoring these. There is a large generator attached to the Practice building that we are also looking after. It is envisaged that this will add to the community's resilience in the event of disaster. The Trust continues to take an interest in current community issues.

We are always looking for new trustees that might complement the existing trustees' skill sets and possibly eventually replace any trustees that have served a considerable amount of time and are ready to rest. More information is available by emailing whealthtrust@gmail.com.

Julie McLeod
Chairperson WDHT



Jujutsu Martial Arts Class

Tapawera

New beginners welcome to come and train with us in a friendly atmosphere.

In the school hall on Mondays

Youth (aged 12-16) 5.00pm to 6.30pm
Adults 6.30pm to 8.00pm

\$2 per student for each class

For further information please contact
Tony Hammersley
Tel: 5224609 or email:
tonyandgill112@gmail.com



Tapawera Area School & Community Library

Hi All, The year is racing by and we still continue to gain a few new adult

members each month. This is great but there are still so many adults who don't yet realise we have an amazing library here in Tapawera.

If you want to see our catalogue before you even come in the door, you'll find us on nz.accessit.online/TPW00 (last two digits are zeros). Once you are a member you can use this webpage to see your account and even check the accounts of your children. A great help in knowing when books are due back. All you need is to get the relevant membership numbers from us.

The library is staffed between 10.30-1.30 Monday to Friday but during the rest of the school hours the key may be obtained from the office. Just leave your details on the library desk.

Our adult fiction does have some great books as does our local history and autobiographical sections. When we do our Richmond exchange we try to cater for different tastes in reading. Our exchange means we bring in about 200 books from Richmond which we hold for about 6 months. We are always happy to hear what authors or book titles you might like us to try and get.

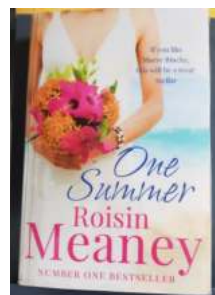
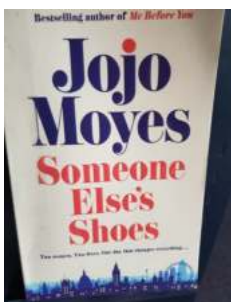
You will find us behind the tennis courts at the school.

Hours and website as above.

Email library@tapawera.school.nz phone 5224337ex213.

Happy Reading folks

Laree for the library team.



Pride in Our People

Time to celebrate another talented local!

Kahu Carleton-Heta is making his mark in the New Zealand painting industry by being recently selected as one of the four finalists of the Master Painters Apprentice of the year. Out of 32 apprentices competing from around New Zealand, the award recognises excellence in the specialised trade of Painting and Decorating. An amazing all expenses paid trip to Fiji in August for Kahu and his partner Leah is where they will announce the winner.

Introduced to painting at seventeen, painting with family, Kahu went onto working with Steve McKenzie from ProColour Painting in Nelson. Steve has high praise for Kahu, and whilst relatively young in comparison to his colleagues, Kahu is already running complex jobs working with a multitude of different paints, coatings and finishes. Steve goes on to say, Kahu's leadership skills are invaluable, and he has been managing and leading jobs since year two of his apprenticeship, and is well respected amongst the team. When asked where he sees himself in five years, Kahu comments; "I would love to be heading the specialised coating division at ProColour and looking after my own team".

Congratulations Kahu, you are a great example of where dedication, passion and drive can lead our young people!



Those clever individuals at the "Mens Shed" have been busy again. Their latest efforts have given this aging sign a new lease of life! THANK YOU Mens Shed, we appreciate you!



From the Principal's Desk

Tēnā koutou e te Whānau ki te Kura o Tapawera

Positive Behaviour for Learning:

Positive Behaviour for Learning (PB4L) continues to be a major focus for our kura. We use our FIRE Way! to explicitly teach our students about **F**riendliness, **I**ntegrity, **R**espect and **E**ffort.

We also use our FIRE Way! to reward and acknowledge students and you should see this on our Facebook and in the newsletter.

At times, you will hear stories in the community about incidents at kura, like every kura in New Zealand things happen. However, when hearing stories, we ask that you remember there is always two or even three sides/ perspectives to an incident. If you hear something that concerns you, please come and have a chat to ensure you have all perspectives. We are working hard to ensure Tapawera Area School is a safe environment and have procedures in place to ensure incidents are dealt with appropriately. As a school, we are working on building a positive community perception!

Nelson Museum Visitor

Wow! What a treat having Kelly from the Nelson Museum working with our tamariki in the primary school today.

Kelly shared the story of Kupe with the year 7-8s. A great way to complete our learning on Myths and Legends from last term.

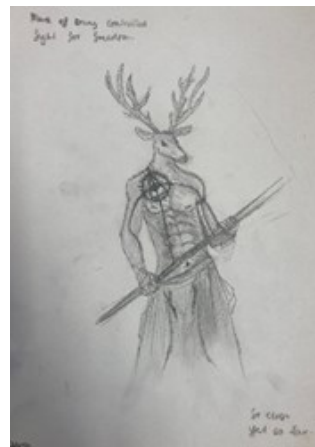
WOW! STEAM Activities in Room 6

Introduction activities to STEAM (science, technology, engineering, art, and maths) activities in Room 6!! Making a chair that holds a weight aka teddy bear.



Suter Art Gallery Trip

Senior Art students visited the Suter Art Gallery last term. The trip was an opportunity for the students to see the Top Art Exhibition which is of the Level 3 NCEA Folios that achieved excellence in 2023. We also spent some classroom time with Esther the Suter facilitator. We looked at an artwork of New Zealand artist Bill Hammond and as a response created some hybrid characters. We also visited some other sites in Nelson for Photography students to take photos.





Rooms 4 & 5

Our amazing writers have been working on descriptive stories, based on the aliens that they created and their exciting adventures. They have published and illustrated their stories into a wonderful book that will be kept in Room 4 & Room 5 for everyone to share and enjoy.



Area School Nationals in Te Awamutu

After three days of playing in their respective Top of the South teams: rugby, basketball, volleyball, ki-o-rahi and football the South Island teams were named with Tapawera having every eligible student chosen for South Island teams.



Sarah was chosen for Basketball, Ki-o-Rahi and Volleyball
Shakaia was chosen for Ki-o-Rahi
James was chosen for Ki-o-Rahi
Bronco was chosen for Ki-o-Rahi
Jada was chosen for Football

Out of our students who got selected to play in the North v South games, we had such a brilliant outcome with 4 students selected in the New Zealand Teams. The highest you can go in Area Schools sports.

James, Bronco, Shakaia and Sarah all selected for Ki-o-Rahi
Sarah selected for Volleyball
Sarah selected for Basketball

We are very proud of each and every student that represented Tapawera Area School in the New Zealand Area Schools Nationals in Te Awamutu. Also a huge thankyou to all our parent helpers who came up to support our students, you were all amazing! Tegan and Daniel could not have done it without you.

You have all done yourselves and the school proud. Ka Pai.

Congratulations to everyone who participated for TOSI this year, we again took out the win. YAY!

Community Garden Working Bee

19 September - Please Join Us!

Mitre 10's 'Helping Hands' team will be at the school's community garden to give us practical, hands on help to transform the garden site into a productive garden again. The community garden site is great but needs lots of work to bring it up to speed again.

And of course, lots of work is easier with LOTS of volunteers, so we hope many local residents will join the working bee. That's you, PLEASE.

Lunch will be provided. Mitre 10 'Helping Hands' will bring the BBQ trailer with food for everyone.

If you wish to receive more details, please write to:

reinert@tapawera.school.nz or
meyles@tapawera.school.nz

Fuel for Schools Programme

We would like to mention members of the community that have contributed to our school by being part of the 'Fuel for Schools' Programme.

Fuel for Schools is a programme that our school has been nominated for by a local business/farm that receives bulk fuel deliveries from Fern. For every 100 litres of bulk fuel they purchase, 50 cents is donated to their nominated school - which is us!

When the contributions have reached \$1000.00 we have the option of choosing packages that are available to redeem the value reached.

Examples are: Sports equipment, Technology equipment, Playground equipment, Music equipment, Garden equipment.

Currently we have just redeemed points for a Chromebook package which includes 2 x laptops.

A big thank you to the following contributors - we appreciate your support very much.

C & T Derbyshire Partnership, DA & NL Newport, Raine Farms Ltd, Rymac farming, Sheryl Culling, Tadmor Lodge, Wairua Hop Gardens/Partnership, Wangapeka Holdings Ltd, Webb Developments & Builders Ltd, Werblehill Crafts

Book Discussion Group

Meet: 4th Thursday in month, 10am
 Contact: Paula Davis ph. 5224341

Federated Farmers

Contact: Harry Matthews - Field Rep -
 0275078901

Golden Bush Garden Club

Meet: 2nd Thursday of month
 Contact: President, Linda Milson
 02102510945, or Shirley Percy 5224924

Golf

Meet: every Sunday, Ladies 9 hole
 every Tuesday
 Contact: Gary Oldham ph. 0278080578

Historical Society

Contact: Barbara Carleton ph. 5224317

Informer

PO Box 15 Tapawera
 Email tapaweraformer@gmail.com

Justice of The Peace

Peter Phillips ph. 5224313
 John Ellis ph. 021 522429
 Brent Hodgkinson ph. 5224381
 Francine Currie ph. 5224245
 Susan Fenemor ph. 0275224009 (text
 during school hours)

MENZSHED

Contact: John Wilmshurst ph. 5224616

Netball

Contact: Susan Fenemor ph.
 0275224009 (text during school hours)

Ramblers

Meet: each month
 Contact: Shirley Percy ph. 5224924

Shedwood Hall bookings

Contact: Tania Higgins ph. 5224587

St Andrews Church Stanley Brook

Services every Sunday. Cup of tea
 afterwards.

Contact: Lee Winter ph. 5224160

St John – Tapawera**For emergencies Dial 111,**

Email info@stjohn.org.nz

Tapawera & Dist. Community Church

St. Peter's Tapawera: no services at
 present

Contact: Church office 03 541 8883

wakefieldanglican.nz

Urgent enquiries to Jenny 0274850448

Tapawera & Dist. Community Council

Meetings: 3rd Tuesday of month,
 7pm Tapawera Community Centre,
 email: TapaweraTDCC@gmail.com

Tapawera Community Centre

Email: Nicola Allan
nicolaallan434@gmail.com or
TapaweraTDCC@gmail.com

Tapawera Connect

Contact: Phoebe Quinlivan ph. 021 211
 6730 or 522 4929, email:
tapaweraconnect@gmail.com

Tapawera Creative Fibre

Meet: every Wednesdays, 10am-2pm,
 Memorial Hall
 Contact: Dallas Robinson ph. 5224984

Tapawera Food Bank

Contact: Suzzi Lankshear ph.
 0277491063

Tapawera Jujutsu Club

Contact: Tony Hammersley ph. 5224609

Tapawera Music/Country Music Club

Meet: Alternate Sundays, Tapawera
 Hotel 7:30pm
 Contact: Elaine Douglas ph. 5418612

Tapawera Op Shop

Open: Wed 10am-3pm
 Contact: Amanda Beer ph. 0278024612

Tapawera Playcentre

Meet: Mon & Thur, 10am -12:30pm
 Memorial Hall ph. 5224456

Tapawera Rugby Football Club

Bookings: ph. Judy Benjamin 5224445

Tapawera Sport & Recreation Society

Contact: Judy Benjamin ph. 5224445

Tapawera Volunteer Fire Brigade

Contact: Dean Millar Chief ph.
 0279651399; Ted Oakly Deputy Chief
 ph. 0210704033

TAS / Community Library

Mon-Fri 10:30am-1:30pm. Contact:
 Lareen Bonnington ph. 5224149
 Library ph. 5224337/ext. 213

TESSI

Contact: Bruce Whyte ph. 5224550

Toy Library

Open Monday or via arrangement:10:30
 -11:30am contact Jan Barker:
 0273915424 or 5524984

Visual Arts Society Tapawera

Contact: Dallas Robinson ph. 5224984

**What's on
September**

- 1 Netball Club prizegiving, Rugby clubrooms, 2pm
- 10 Tapawera Talking Café, 10-11:30am, Tapawera Community Centre
- 10 Digi Drop-in Session, Community Centre, 11am-1pm
- 10 Community Hub Public Information Session, Community Centre, 5-8pm
- 12 Garden Club, 11am, 40 Hart Road, Richmond
- 14-15 Waimea Area Quilt Show, Wakefield School Hall, 10am-4pm
- 16 Community Transport Trust AGM, Motueka Library, 7pm
- 17 TDCC monthly meeting, Community Centre, 7pm
- 19 School/community garden restoration, 8am - 6pm
- 20 Articles for Informer close 5pm
- 24 Tea and Talk, Memorial Hall 10:00am - 11:30am
- 29 Tapawera Community Craft and Market Day, Village Green, 10am-2pm

**GP & Nurse at
Tapawera Clinic**

(during school term time):

GP clinics – Mondays 9am –
12 midday

Nurse clinic – alternate
Tuesday mornings - phone
541 8911 for dates

Wakefield Police

Constable Jamie White –
jamie.white2@police.govt.nz
 Constable Matthew Berquist –
matthew.berquist@police.govt.nz
 Non Urgent (CRL) – Call 105
 Happening Now – Call 111