



TAPAWERA AND SURROUNDING VALLEYS
COMMUNITY PLAN



E koekoe te tūī, e ketekete te kākā, e kūkū te kererū

The tui chatters, the kākā cackles, the kererū coos

By appreciating all our voices, our different songs,
we will make good music for the future

CONTENTS

COMMUNITY VISION	4
DEVELOPING OUR PLAN	6
OUR PLAN AT A GLANCE	8
CARRYING OUT OUR PLAN	10
TAPAWERA COMMUNITY PLAN INITIATIVES BY FOCUS AREAS:	
 WE ARE CARING AND CONNECTED	12
 WE ARE BUILDING A SUSTAINABLE AND RESILIENT COMMUNITY	13
 WE ARE ACTIVE AND HEALTHY	15
 WE ARE PROUD OF OUR COMMUNITY	16
 WE ARE GUARDIANS OF OUR MOUNTAINS AND RIVERS	17
CHALLENGES AND OPPORTUNITIES	18
TAPAWERA COMMUNITY PROFILE	20

COMMUNITY VISION

Our Vision is that Tapawera and Surrounding Valleys is a Caring and Resilient Community

- Caring for One Another
- Building a Sustainable Future
- Guardians of Our Mountains and Rivers
- Growing in a way that Values Our Heritage



DEVELOPING OUR PLAN

Our community plan is important for the people of Tapawera and surrounding valleys as it reflects our vision, hopes, priorities and values. A community plan was also essential as a result of Tapawera becoming a partner in the Community-led Development Programme (CLDP). Tapawera Connect signed a CLDP agreement on behalf of the community with the Department of Internal Affairs in late-2022.

Tapawera Connect took the initiative to facilitate a community plan, and we acknowledge financial support provided by DIA for this project.

This plan is the result of many conversations that have taken place over at least the past eight years, reflecting the community's voice. A big thank you goes to all who put forward ideas over the years.

Based on those conversations, meetings, and surveys, 20 recommendations were presented to our community during October and November 2023. Community members were asked to indicate which of the recommendations were important for Tapawera. And if they considered a recommendation important, what level of priority they thought it should have.

Many of the recommendations sat naturally alongside others so the recommendations were grouped into five focus areas:



We received an excellent response from 130 people from all over our area, and attendance at feedback events was good. This is what our community said about the recommendations:

Feedback on Recommendations listed in Focus Areas	No. of people in support out of 130 total responses	Priorities (% of total responses)		
		High	Medium	Low
WE ARE CARING AND CONNECTED				
Community Hub	114	42%	33%	12%
Advocate for increased Seniors Housing	102	37%	28%	14%
WE ARE BUILDING A SUSTAINABLE AND RESILIENT COMMUNITY				
Support community planting incl. fruit trees and pollination pathway	110	41%	35%	9%
Advocate for a more robust power network/improved telecommunications	108	44%	29%	11%
Support local businesses in exploring opportunities for economic stability/employment	106	51%	24%	7%
Support School and Community Garden	103	28%	42%	8%
Investigate flexible, affordable and accessible community transport	102	44%	27%	8%
Facilitate Tapawera community preparedness plan	101	35%	33%	10%
Support growth of local food networks to increase food resilience in Tapawera*	63	43%	31%	4%
WE ARE ACTIVE AND HEALTHY				
Advocate for increased health services including family and mental health	111	62%	19%	4%
Promote Shedwood Bush and other recreational areas	109	29%	38%	18%
Investigate cycling hub concept and feasibility of more off-road trails	100	23%	31%	23%
Investigate covering/heating pool	99	33%	24%	18%
WE ARE PROUD OF OUR COMMUNITY				
Support landscaping route to the river, including a recreation area	108	39%	13%	12%
Facilitate annual event/celebration for Tapawera	102	35%	38%	8%
Support smaller events through the year	99	28%	18%	7%
Facilitate development of comprehensive village and environs plan	88	20%	39%	10%
WE ARE GUARDIANS OF OUR MOUNTAINS AND RIVERS				
Support project to promote and safeguard birdlife on semi-braided section of Motueka River	106	36%	14%	11%
Support efforts to improve safe access to Kahurangi National Park over the Dart River	103	33%	15%	7%
Support environmental programmes with our local school	102	41%	14%	8%

*Percentages for this recommendation are of the responses received, not the overall total of responses, as (in error) the first informer form did not include it.



OUR PLAN AT A GLANCE



We are Caring and Connected

Tapawera aims to be a community that cares for, looks out for, and supports one another. A more connected community is more resilient.



We Are Building a Sustainable and Resilient Community

Tapawera, like all other communities in NZ, faces multiple challenges in a changing world. The community seeks to increase its resilience especially in the face of more severe weather events and other emergencies. We also want to support community members to localise food production to increase food security, live more sustainably, and grow local job options.



We are Active and Healthy

Tapawera seeks to be a community where good health is encouraged and supported, especially where barriers to accessing health and medical services and advice are reduced or overcome. We seek to be a community where people are supported to keep active and work together to provide recreational opportunities as part of enhancing community wellbeing.



We Are Proud of our Community

We are proud of who we are as a community and love where we live. Over recent years community members have expressed the wish for more events to bring the community together, to recognise and celebrate the character and history of Tapawera, and to enhance our physical surroundings.



We Are Guardians of our Mountains and Rivers

Kahurangi National Park is on our doorstep and Tapawera is one of the gateways to it. The Motueka River flows through the heart of Tapawera and many residents of the district live up the valleys of the rivers that flow into the Motueka. Tapawera people seek to be guardians of our special local environment.

CARRYING OUT OUR PLAN

This plan is based on collaboration and partnership within our local community and wider afield.

For this plan to have the most successful outcomes it needs to be owned by the Tapawera community. The initiatives in this plan need to be done by us, not for us.

We acknowledge the great work done in the past and still being done by community-minded locals through sports clubs, recreation activities, environmental work, and interest groups.

With the support of Tapawera and Districts Community Council, other key organisations, and community members Tapawera Connect will facilitate activity around the community plan. And who will do the work? Us, the whole community.

Activity will be set out in a work plan. This will set out all the initiatives of the community plan in more detail with their objective, scope, timeline, budget, people (who is leading or helping the initiative) and status.

Progress and details of initiatives will be updated on the community website, in the Tapawera and Districts Informer, and at community gatherings.

This community plan is a living document and as time goes on some initiatives will be completed or just become part of the fabric of life in Tapawera and districts. New initiatives that have community support will be added.

You may have other things you would like to do in our community to improve it for us all.



Email the CLDP Coordinator about your ideas:

contact@tapaweracommunity.nz

For more information visit: tapaweracommunity.nz/cldp

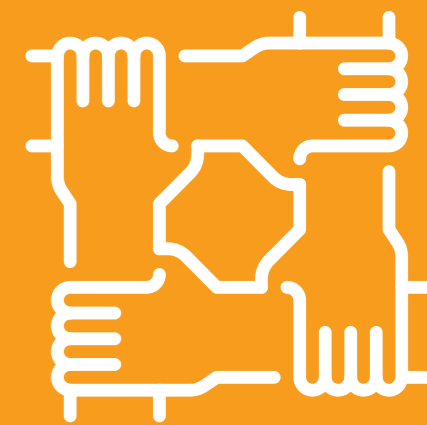


COMMUNITY-LED DEVELOPMENT

This plan is based upon the principles of Community-led Development (CLD).

Community-led Development (CLD) is working together in a place to achieve and sustain locally owned visions and goals. CLD in Tapawera is based on five core principles:

1. **Grow from shared local visions.**
2. **Build from strengths.**
3. **Work with diverse people and sectors.**
4. **Grow collaborative local leadership.**
5. **Learn by doing.**



WE ARE CARING AND CONNECTED

A Community Hub for Tapawera

In Progress

A feasibility study in 2023 concluded there is a need for a fit for purpose community centre in Tapawera. The new community centre is seen as a community hub that includes a community meeting place; space for people to drop in; a venue for smaller group meetings and training or skills workshops; provision for any existing and expanded community health and social services; a workspace for any community co-ordinators; and space for the community op shop.

Tasman District Council, Tapawera and Districts Community Council, Tapawera Connect and the Department of Internal Affairs are working together to progress the project.

Advocate for increased housing for seniors

Concept

More housing options would reduce the need for elderly residents to move away from Tapawera. This is a significant initiative that will need investigation and resourcing to progress.

WE ARE BUILDING A SUSTAINABLE AND RESILIENT COMMUNITY

Support School and Community Garden

In Progress needing Support

Our local School and Community Garden has come alive in an exciting new beginning with the help of some enthusiastic locals. Responses from the Community Plan feedback show that we want to see this initiative grow and flourish. Let's help make that happen.

Support the growth of local food networks to increase food resilience in Tapawera, including the sharing and sale of local produce

In Progress needing Support

Locals understand the importance of food resilience (sometimes called food security) given the challenges facing every community across New Zealand from climatic changes, economic pressures, epidemics etc. Community members want to build more resilience in our local food supply especially though more people being encouraged and supported to grow their own food, to better feed ourselves and share with our community.

Support community planting including fruit trees and a pollination pathway to the river

In Progress needing Support

As part of encouraging more local food production, some locals are keen to see more fruit trees grown in suitable sites around village to supplement fruit trees at the School and Community Garden. Fruit would be available for locals to pick and enjoy. The idea has also been proposed that trees planted along the old railway line could form a pollination pathway to increase local biodiversity.



WE ARE BUILDING A SUSTAINABLE AND RESILIENT COMMUNITY (CONT.)

Investigate flexible, affordable and accessible community transport

In Progress needing Support

Tapawera and surrounds is relatively isolated and distant from many services. In a time of rising living costs a need is seen for affordable transport options. The Nelson Tasman Community Transport Trust is supporting some Tapawera locals to trial a community vehicle.

Facilitate development of a Tapawera community emergency preparedness plan

New Initiative Needing Support

The current model for community emergency preparedness is that local communities do their own plan. Creation of a Tapawera plan in 2024 will use a plan template from Nelson Tasman Civil Defence.

Advocate for a more robust power network and improved telecommunications

New Initiative Needing Support

Tapawera locals have experienced a power supply that has at times been unreliable, and telecommunication that varies in quality across our district. We want to see a more robust power supply, and a telecommunication network that allows us to engage both online and in mobile connections in all the ways our modern world requires.

Support local businesses in exploring opportunities to develop economic stability and local employment

Concept

Community members would like to see Tapawera develop more economic resilience especially to increase local employment. This initiative needs more investigation.



WE ARE ACTIVE AND HEALTHY

Advocate for increased health services including family and mental health

In Progress

Community feedback indicates strong support for advocacy for more health services to be available in Tapawera to improve access to services and reduce the need to travel.

Investigate the covering and heating of the pool.

The school pool is a real asset for the area school and is also available to the community. This initiative proposes investigating ways the pool can be enhanced for the benefit of all in Tapawera.

Promote Shedwood Bush and other local recreational areas

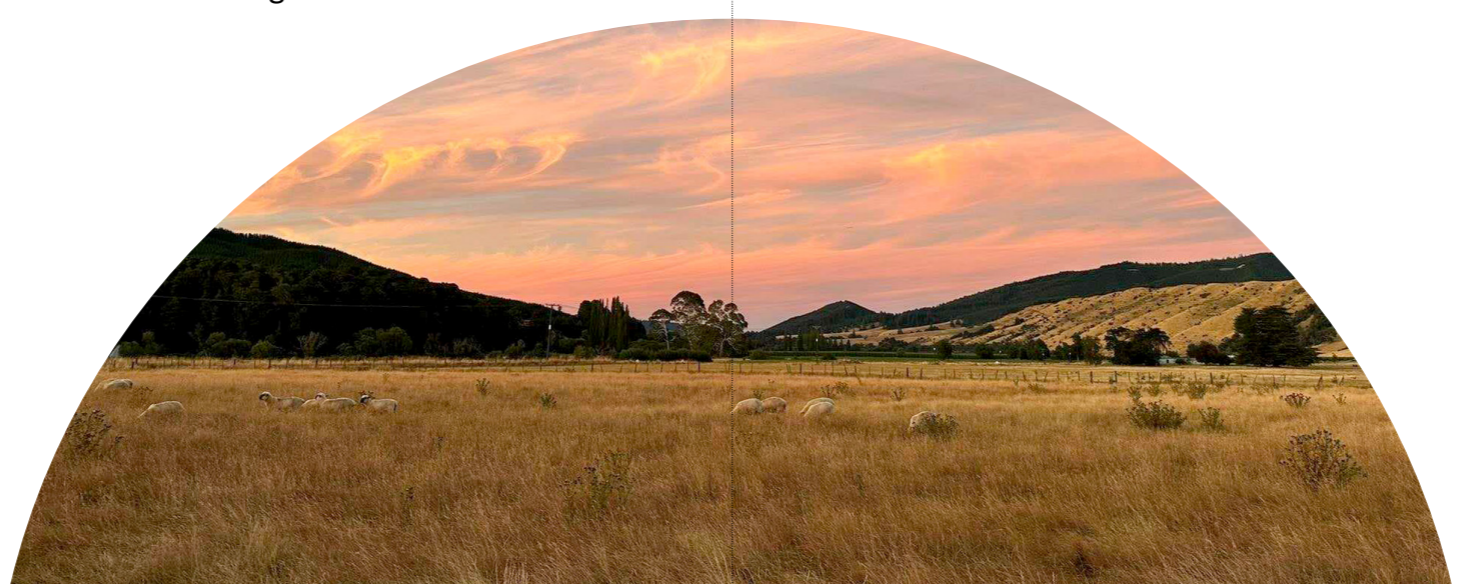
In Progress needing Support

People see Shedwood Bush as an asset for locals and visitors and would like to see it promoted more along with other local recreational areas.

Investigate the cycling hub concept and the feasibility of more off-road trails

Concept

This proposed initiative brings together a number of suggested cycling-related projects to create more cycling opportunities in Tapawera district. Some might leverage off the Great Taste Trail and the Tapawera-Murchison Heartland ride, while others would create local off-road trails for locals (especially young people) but also help to boost tourism.





WE ARE PROUD OF OUR COMMUNITY

Facilitate the development of an annual event/celebration for Tapawera

Concept

People see past events as being significant in the life of Tapawera, especially with the way they bring people together across a widely-spread district. This initiative seeks to bring together the current wider Tapawera community through a significant annual event that celebrates the diversity and uniqueness of Tapawera.

Support other smaller events throughout the year

Concept

This initiative seeks to see a calendar of events throughout the year that back up the major Tapawera event. It would include many existing events and have space for new ones.

Support the landscaping of the river route, including a recreational area

Concept

This initiative would give a lift to the village and surrounds through creating an attractive path to the river and developing a recreation area for the community and visitors.

Facilitate the development of a comprehensive plan for the village and environs

Concept

A range of ideas have been brought forward over the years to improve Tapawera. This initiative would see all the good ideas people have had brought together under the umbrella of a comprehensive plan. This will mean that the ideas can be worked on individually but will fit together for the best result.



WE ARE GUARDIANS OF OUR MOUNTAINS AND RIVERS

Support a project to promote and safeguard the ecological significance of birdlife on the semi-braided section of the Motueka River

In Progress needing Support

A project to support our braided river birds through education, awareness and collaboration has been launched and this initiative seeks to encourage more community involvement.

Support for environmental programmes with our local school

In Progress needing Support

This initiative is about community members supporting positive environmental activities happening at, and through, the school.

Support efforts to improve safe access to Kahurangi National Park over the Dart River

In Progress needing Support

TDDC has been active working with the TDC to maintain safe access over the Dart River ford. This initiative seeks to support that activity, but also investigate an improved crossing and the possibility of restoring foot access over the river into the Kahurangi National Park.





CHALLENGES AND OPPORTUNITIES

When it comes to community development a significant challenge facing Tapawera and its surrounding districts is limited resources, both human and financial.

There are many communities and groups seeking funding for their initiatives and services, and only limited funds available. We need to be strategic about what we apply for, and look for innovative ways to support our projects rather than relying solely on outside funding.

When it comes to people, Tapawera faces the same issue as other smaller rural communities where the weight of maintaining community activities, groups, projects etc tends to fall on a relatively small core group of community-minded people. Some people end up wearing different hats and burnout has been mentioned in community conversations.

We in Tapawera have the opportunity to determine our future. This plan outlines the priorities and initiatives our community sees as important. Through the collaboration of the Community-led Development Programme, and the support of a range of funders and agencies, we can make Tapawera an even better place to live.

The CLDP provides Tapawera with potentially better access to funding for community projects, and support to shape CLDP project proposals to give them the best chance of being approved for that funding.

This plan aims to give the community a clear focus and framework for community initiatives.

The many initiatives in the plan will need people to get involved in many different ways. Community-led development is about local people taking the lead. We all lead in different ways at different times.

There will be opportunities for a range of involvement from being a project lead or a member of a project team, through to people contributing through doing tasks such as caring for community fruit trees for an hour or two a month.

This plan is a living document. You may have other things you would like to do in our community to improve it for us all. Talk with CLDP Community Connector about your idea/s, see below.

There will be some rewarding mahi for everyone to do!



Email the CLDP Coordinator about your ideas:

contact@tapaweracommunity.nz

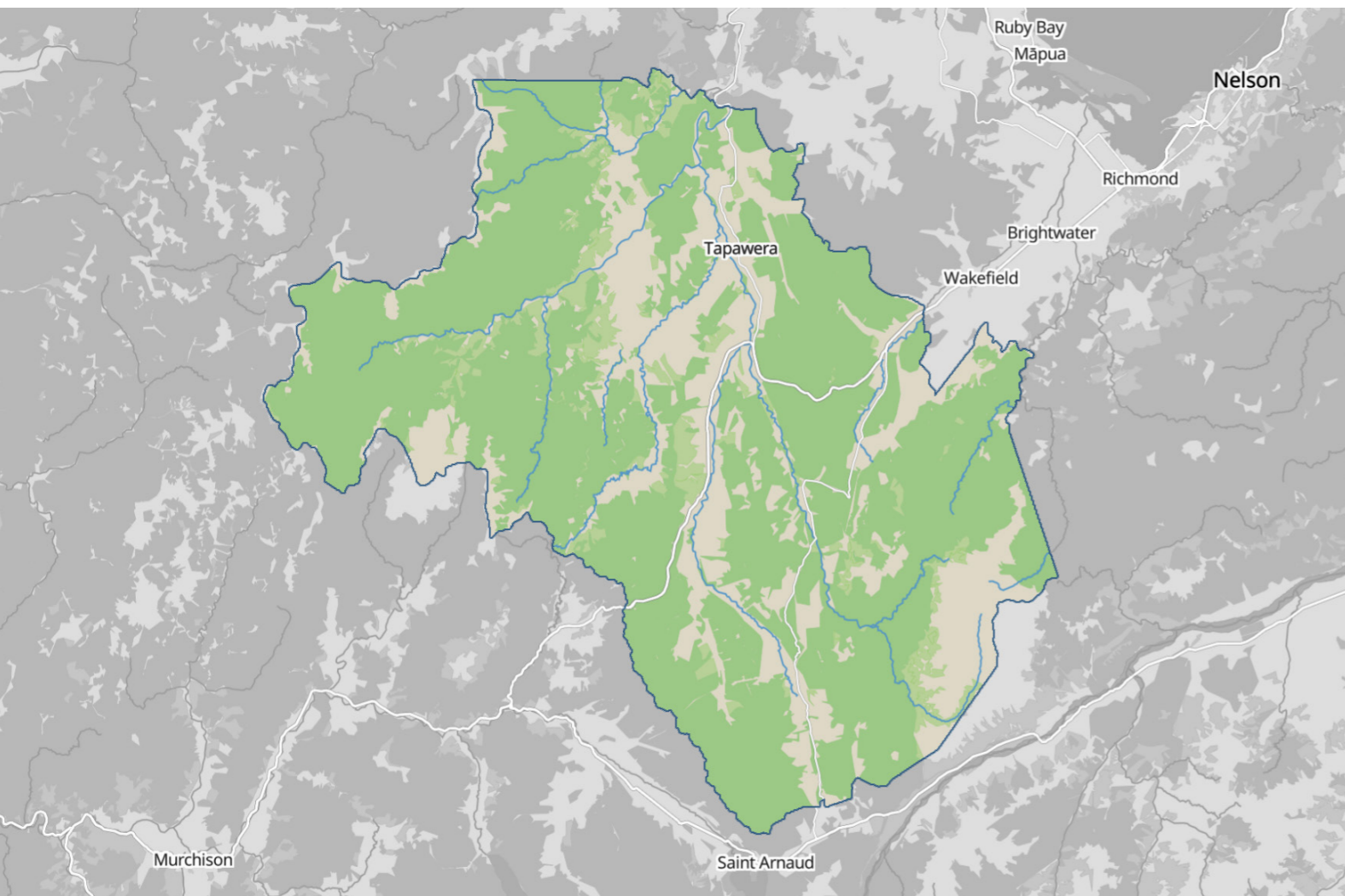
For more information visit: **tapaweracommunity.nz/cldp**

TAPAWERA COMMUNITY PROFILE

Tapawera is the main township in the Golden Downs Statistical Area (SA2) shown in the map below. The following demographic analysis uses data pertaining to the Golden Downs statistical area sourced from Statistics NZ medium projections.

Statistical Area 2 provide higher aggregations of population data than can be provided at the statistical area 1 (SA1) level. The SA2 geography aims to reflect communities that interact together socially and economically. In populated areas, SA2s generally contain similar sized populations.

STATISTICAL AREA 2 – GOLDEN DOWNS



Demographic Summary for Golden Downs

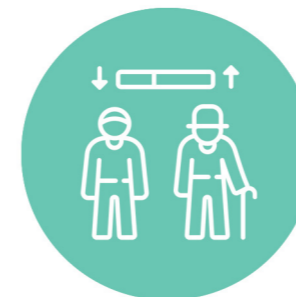
Demographic Highlight

Impact on Community activity



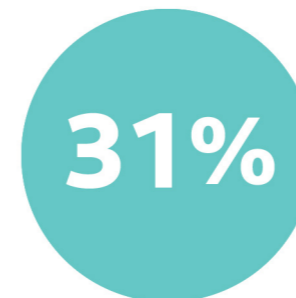
The population of Golden Downs was just over 2000 people in 2023. The population will increase by 7% in the 25 years to 2048 to reach 2,170.

There is little growth expected in the Golden Downs area over the next 25 years with an increase of approximately 140 people.



The population of Golden Downs is expected to age significantly in the 25 years to 2048. The population of the group aged 65+ is expected to increase by 74% or 290 people.

Increased demand for indoor recreation and social spaces by the 65+ age group along with associated activity and support services.



By 2048 it is expected that those aged 65 years and over will make up 31% of the population of Golden Downs, (up from 19% in 2023).

There will be a requirement for facilities that are warm, accessible and with good acoustics.



Golden Downs is one of two areas which have the highest level of deprivation in Tasman District (decile 5).

Tapawera Village has a deprivation level of decile 9 and is surrounded by areas in decile 4 and 6.

Multi-use, inclusive, and accessible spaces that enable a range of community activities, from active recreation to social and health support services to ensure equitable support for community.



Golden Downs Age Group Projection/Distribution

The population of those aged 65+ in Golden Downs is expected to increase by 74% in the 25 years to 2048, while the populations of the 15-39 and the 0-14 year age groups are expected to decrease by 24% and 6% respectively over the same period.

The population of the group aged 40-64 years is expected to remain the same.

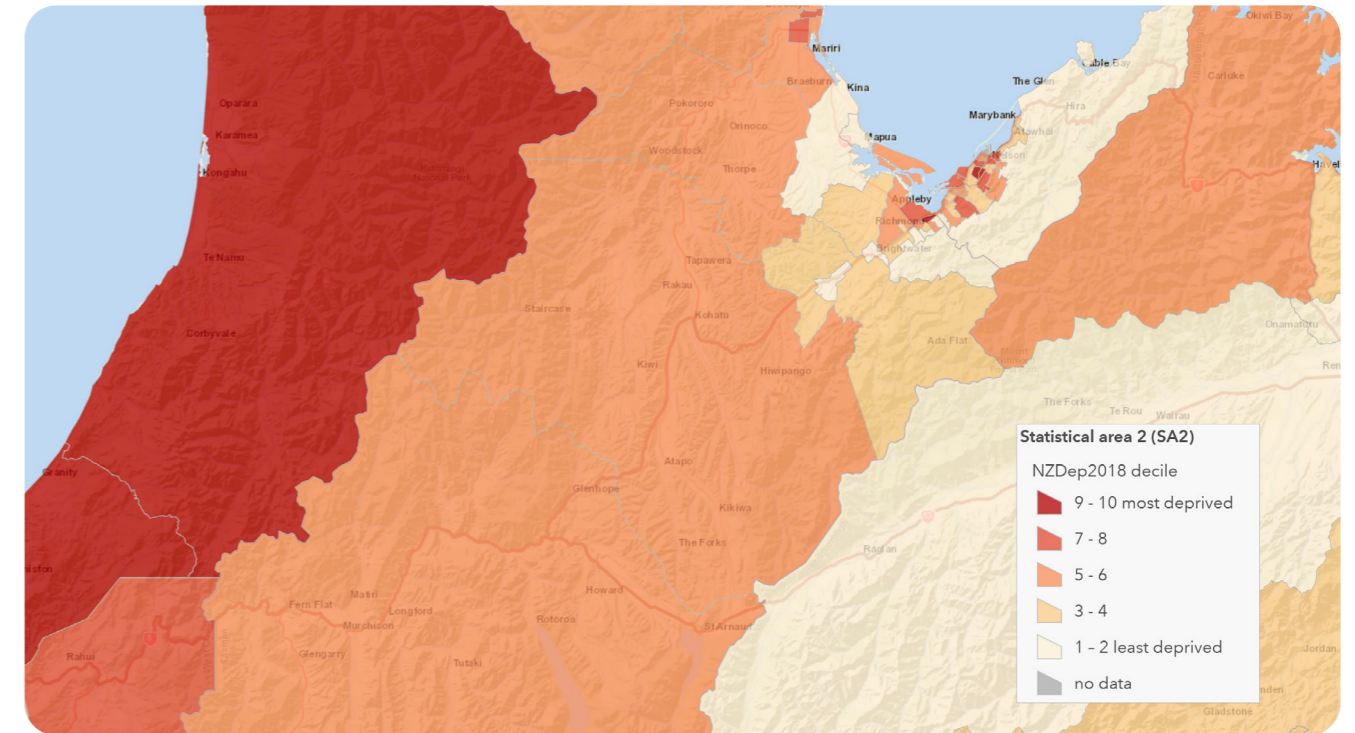
By 2048 it is expected that those aged 65 years and over will make up 31% of the population of Golden Downs, (up from 19% in 2023).

The 0-14 year age group and 40-64 year age group are expected to comprise similar proportions of the population as they did in 2023. The 15-39 year age group is projected to make up 20% of the population in 2048, a decrease of 9% from 2023.

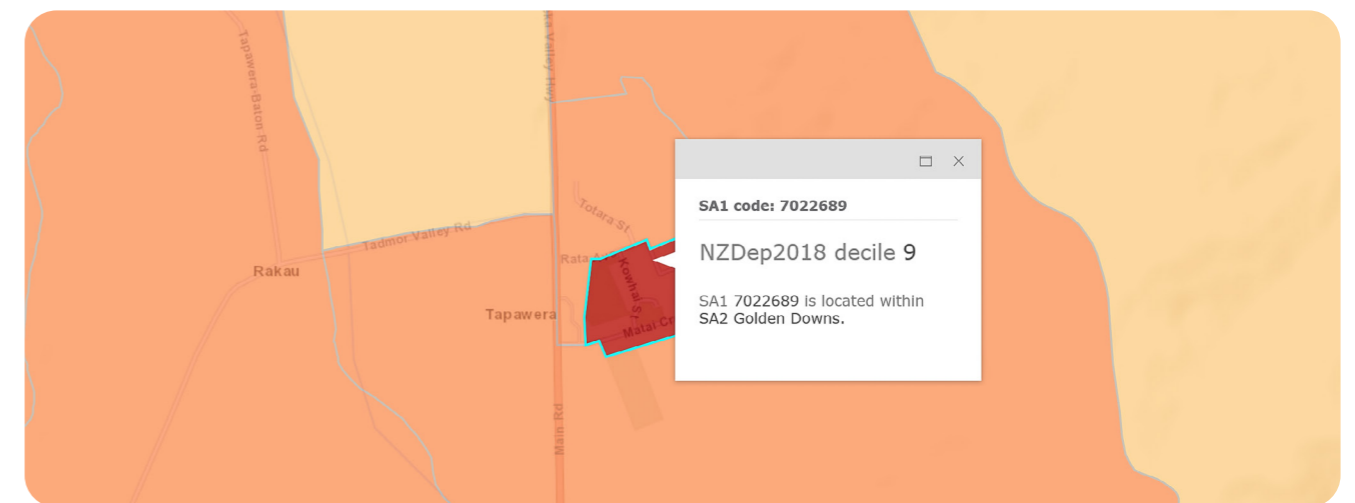
Deprivation

The New Zealand Index of Deprivation (NZDep) provides information on socioeconomic deprivation. The index measures the level of deprivation for people in small areas and is based on nine Census 2018 variables. The NZDep is displayed in 10 deciles. Decile 1 represents areas which are least deprived, and Decile 10 represents areas which are most deprived. It should be noted that NZDep estimates relative socioeconomic deprivation for areas, not people.

The two areas of the Tasman District with the highest level of deprivation at decile 5 are shown as Golden Downs and Motueka. Tapawera Village, within the Golden Downs area, has a high deprivation level of decile 9 and is surrounded by areas in decile 4 and 6.



DEPRIVATION SCALE GOLDEN DOWNS



DEPRIVATION SCALE TAPAWERA VILLAGE AND SURROUNDING AREA

Demographic Conclusion

Tapawera and the surrounding Golden Downs area population is projected to largely remain the same over the next 25 years. However the population, as with the rest of New Zealand, is expected to increase significantly in the 65+ year age group. The Tapawera Hub feasibility study noted that the Tapawera community having a NZ Dep profile of 9 suggested that any facility development should cater for the social and health services that are and will be required to support this community. (Further background demographic information is available on the community website).



TAPAWERACOMMUNITY.NZ

This is the first edition of the Tapawera Community Plan released in May 2024

Photographs: Myra Upson (pages 2, 5, 11, 17, 22), Tarsh Newport (14), Ana Aceves (8)

Designed by Sugarcube Studios, Tapawera