

## Presentation and Discussion on TDC Long Term Plan

A team from TDC will present the Long Term Plan from 7pm to 7.45pm on Tuesday April 16th 2024 at the Community Centre.

All members of the public are welcome to attend and ask questions.

Tasman's 10-year plan is the Council's long-term business plan – what is TDC going to provide, how much will it cost and how will TDC pay for it. TDC is now consulting on the 2024-2034 edition of the Plan.

TDC would like to share with the Tapawera and Districts Community Council (TDCC) and the Tapawera Community what TDC is proposing in the plan, the options and the financial impacts. The meeting intends to provide information and encourage people to make submissions. Details on submission deadlines will be provided at the meeting.

The four key issues TDC is particularly seeking submissions on are as follows:

- Financial sustainability – TDC proposal and two general options to reduce the impact on rates.
- Transportation – sealed road maintenance, public transport and safety for pedestrians and cyclists. In each case TDC has a proposed programme with options to go further or reduce the programme.
- Responding to Climate Change – TDC has a proposed programme of work for mitigation and adaptation to climate change that is integrated across a wide range of TDC activities. There is a further option to increase the leadership and communication around climate change to try to influence community actions.
- Investing in community facilities. TDC is proposing to partially fund four community facilities over the next ten years including a swimming pool in Motueka. To enable these projects also requires a substantial contribution from community fundraising.

The TDC presentation will be followed by TDCC's normal monthly meeting.



The March meeting was held at Jean and Paul's magical hidden garden at Glenhope. The first thing one noticed was the green grass, a sight most of us hadn't seen for quite a while. The property is on the site of the old railway line and as well as a bush walk there are many nooks and crannies with garden art and water features. An old restored railway carriage and cottage were there to explore. We were fortunate to have the opportunity to visit Jean and Paul's expansive garden. It was good to see a few new faces and visitors as well.



The raffles of gerberas in pots and one other were won by Jennifer, Lynn and Shirley.

Next meeting is Thursday 11th April, 11am at Margaret de Mortons, 142 Little Sydney Road, Riwaka. It is on the right hand side of the road with a driveway to the house. There will be a raffle and auction.

Autumn has certainly arrived with many trees changing colour and cooler mornings. The rain is still missing though.

Happy Gardening

Shirley

# TAPAWERA ELECTRICAL

## Tony Stephens

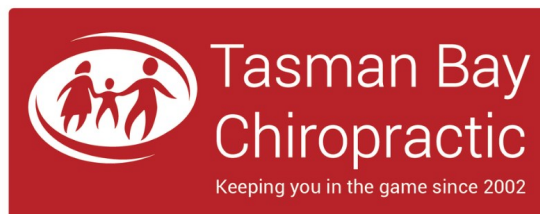
Registered Electrician

Ph/fax 5224257  
0276249489

All electrical needs  
Domestic & Rural  
Wiring, faults, some home appliance repairs  
New heat pump installations



Free Quotes  
Competitively priced



## Referrals, families and all new clients welcome

Visit our website or call for more information



03 544 4554 Monday-Saturday  
tasmanbaychiropractic.co.nz

Find us on  

### RURAL POST, RD 2 Wakefield

Contact Nick & Jackie Costley for all your RD 2  
Wakefield postal needs.

Including prepaid envelopes, stamps, courier  
items and local freight from Wakefield, Dovedale  
and Tapawera. Prescriptions from Wakefield.

**Phone 0275418581**

Mark & Tania Gill  
T/A MTJ Transport  
RD2, Nelson  
NZ Post Rural Contractors  
Servicing  
Motupiko-Korere-Kikiwa-Tophouse-St Arnaud-Glenhope

For all your Postage, Milk & Courier Freight  
Operating 3 Days Weekly  
(Monday-Wednesday-Friday)  
Departing Nelson 8.00am  
Phone 546 6295

### Material & adverts for Informer

All material is to be sent to either:

Informer, PO Box 15, Tapawera, 7055  
or email- [tapawerainformer@gmail.com](mailto:tapawerainformer@gmail.com)

To be received by 5pm  
20th of the Month

If emailing a word document please send in Word as an  
attachment.

If sending an advert please save as a jpeg before sending.

Please check your emails to see your article/advert has  
been received as sometimes there needs to be alterations.

#### Advertising rates for Informer

Standard ad	Pay monthly	Pay annually
1/4 page advert	\$32.50	\$286
1/2 page advert	\$45	\$396
Full page advert	\$65	\$572

Adverts that require editing may cost extra

The Informer is produced and published by the Tapawera and Districts  
Community Council, PO Box 15, Tapawera, 7055;  
email: [tapawerainformer@gmail.com](mailto:tapawerainformer@gmail.com)  
Circulation 635  
Editor: Gill Hammersley  
The Editor and Publisher try to ensure information published is truthful

and accurate, but do not accept any responsibility for errors or  
omissions, or for any consequences of readers' relying on the  
information published. Opinions expressed by contributors may or may  
not be endorsed by the Editor or Publisher.  
All material submitted, whether editorial or advertising, is accepted at  
the discretion of the Editor and the Publisher.

# Tapawera CONNECT

Senior's Snippets with Janine Leeden, 0277525975



This photo from our February visit to the Age Concern Summer Activity of 'Spin Poi in Isel Park'.

Much fun was had by all, thanks to access to the NTCTT van that we are looking to utilise on a more regular basis. (See article by Jo Leyland)

I have now connected, for the community – with Melissa at The Big Bake Up in Wakefield. We are wanting to establish a central point where those in need of some extra support in times of need can pick up a frozen meal to get them through.

In the meantime please give me a call if you know of a need – 02775259975. Also Tamara and Abby from the Rural Mummas Group have access to some of these meals also to assist families where needed.

The next **Wellby Talking Cafe on Tuesday 9th April 2024, where we will return to the warmth of the Hub room in the Community Centre from 10-11.30am.** Come along for a free coffee & chat and to meet some other locals. **(This offer is NOT just for Seniors!)**

I have organised for Helen McCubbin from Tasman District Library to again offer their **Digi Drop-in session, also at the Community Centre from 11am-1pm.** Are you aware of the different free apps that you can access through your TDC Library membership? I recently heard of one lady who regularly downloads and listens to some amazing audio books each month. Helen can help you learn how to access all those features.

She also has information that might make internet access more affordable for those struggling financially using **Skinny Jump.** If you currently can't afford and don't have internet connection at home, please call in to find out if you qualify and get set up on the day! **(This offer is NOT just for Seniors!)**

Our monthly **Tea and Talk**, for over 65's, will be on **Tuesday 30th April 10-11.30 am at the Memorial Hall.**

Please join us for some relaxed and fun socialising. \$3 gets you morning tea and some great connections. I am still waiting on confirmation of who our guest speaker might be.

We continue to meet weekly at St Peter's Anglican Church for Sit and Be Fit, from 10-11am for some gentle exercise, some laughter, and a cuppa, all for \$3. Please feel free to come along and join in for some strength and balance exercises as well as some important socializing. This is part of the Falls Prevention programme run by Nelson Bays Primary Health for ACC.



## Travel Update Tapawera

March has been a busy month for efforts to support members of the Tapawera community to travel to local places they otherwise wouldn't be able to. We've been very happy to have received the formal support of the Nelson Tasman Community Transport Trust (NTCTT) in the provision of their 6-seater hybrid vehicle to use for piloting a weekly service from Tapawera to both Richmond and Motueka. TDC is one of the main funders of the Trust which was established in 2018. The Trust piloted and lobbied for bus services from Motueka and Wakefield which played a part in pushing for the eBus service that now provides four buses a day to and from both Motueka and Wakefield on weekdays, and for a very reasonable fare especially if you have a Bee card. The Trust is now focusing on how to complement existing services like the new eBus service, and support those who aren't benefiting from it. 'Inclusive Access' is one of the main outcomes that the Ministry of Transport seeks. Within our community, there are people who can't drive or no longer drive, particularly older members, and/or who have constraints to use the public transport system.

Jo has been involved in a couple of strategic planning meetings for the Trust this past month as well as speaking at the Review hearing on the Regional Land Transport Plan & Regional Public Transport Plan held at TDC on the 20th in support of the Trust and Tapawera. Janine, as the part-time Senior Wellbeing Co-ordinator for Tapawera Connect, has been doing a sterling job of supporting our older members to make trips they otherwise wouldn't or couldn't, using the little hybrid bus, with trips to join the Gardening Club out towards Glenhope and Seniors to Stoke. She is also linking in with Nelson Bays Primary Health with their free 'Kickstart' programme in Motueka that starts in May which supports change to various aspects of lifestyle and encourages physical activity. We want the vehicle to be used for such wellbeing activities and also local group events if the group has an approved driver. It can be booked for trips outside of the regular weekly route trips on a time-based rate. The Trust currently has a minimum \$6 one-way fee for regular services.



# Rongoā Kākāriki Green Prescription



**Wednesday Kickstart – \$3 per session Location: Motueka Recreation Centre**

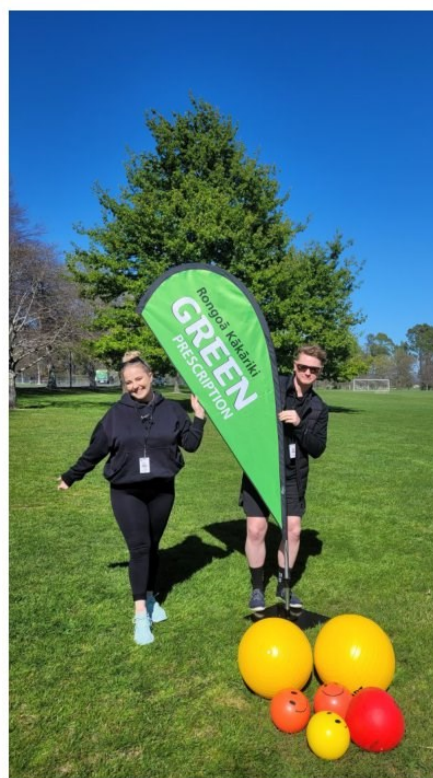
1pm @ Motueka Recreation Centre

This 8- week program includes 30 minutes of education related to healthy lifestyle topics, followed by 30 minutes of physical activity in the Motueka Recreation facility.

**This will commence on the 1st May 1pm-2pm**

## Topics:

- ◆ Topic 1 – Smart Goals and Planning
- ◆ Topic 2 - The Importance of Physical Activity
  
- ◆ Topic 3 – Nutrition for 2 weeks
- ◆ Topic 4 – Stress/ Sleep Management
  
- ◆ Topic 5 – Heart Health + Diabetes
- ◆ Topic 6 – Integration / Reflection



**Contact us to enroll:**

Email: [grx@nbph.org.nz](mailto:grx@nbph.org.nz)

Phone: Ollie: 0273175879



Support with getting to Mot and back is available.  
Contact [tapaweraconnect@gmail.com](mailto:tapaweraconnect@gmail.com). Easy peasy!

## Travel Update Tapawera cont.

We've had six locals come forward so far who are willing to be volunteer drivers of the little hybrid bus. Their applications and police vetting is being done through Anita Parkes who is the Transport and Marketing Coordinator for the Trust. There are other locals who are interested and we welcome more people to come forward who might be willing to be part of a roster for the weekly trips in to Richmond and to Motueka as well as potentially use the vehicle and drive for their club/organisation events. Being a hybrid vehicle, it has very low petrol consumption and it's an opportunity for drivers to get a free social trip into town! If anyone is interested to be part of the driver team, please get in touch with Anita at [marketingntctt@gmail.com](mailto:marketingntctt@gmail.com) or on 022 6822373.

On the 26th March we will confirm the route timings & drivers for the next few months starting after Easter. Details will then be posted on the [tapaweracomunity.nz](http://www.tapaweracomunity.nz) website as well as the Trust's website at <http://www.ntctt.org.nz/> and their Facebook page. The vehicle will depart from the Tapawera Community Centre and drop passengers at the Richmond Mall on Tuesdays and at the Motueka library on Wednesdays, with return pickups from the same places. Costs will be \$6 each way and bookings must be made through the Motueka i-site (Tel: 03 528 6543) as per the Trust's other services.

Within three months we plan to have a review of our progress with passengers, drivers, the Community Transport Trust, Tapawera Connect and other key stakeholders at the Kohatu Flat Rock Café and see if and where we want to make any changes. The Café now has e-charging for both vehicles and bikes so it will also be a chance to publicise and celebrate inclusive transport services for Tapawera more broadly. The Ministry of Transport's quoted purpose of the transport system is 'to improve people's wellbeing, and the liveability of places' so we are working to make that happen!

Jo Leyland & Janine Leeden

19 March 2024



**WAKEFIELD & DISTRICTS**  
COMMUNITY HEALTH CENTRE



## Menopause. Part 2

### Treatment

At menopause, changes in hormone levels can cause symptoms for many women – for example, hot flushes, mood and sleep changes. The severity of symptoms varies hugely with about 20% of women having no symptoms at all, 60% having mild to moderate symptoms and the remaining 20% having severe symptoms that interfere with

their daily life. The average length of time women suffer these symptoms is 7 years.

If symptoms are mild, starting with lifestyle changes may be enough to improve symptoms. If symptoms are more bothersome you may wish to consider medical treatment.

### Lifestyle changes:

Improving diet, regular exercise and stopping smoking improve overall wellbeing and can make symptoms easier to tolerate. Some psychological treatments e.g. cognitive behavioural therapy (CBT) and mindfulness may also help

### Menopause Hormone Therapy

Menopausal Hormone Treatment or MHT (previously known as Hormone Replacement Therapy or HRT) is the most effective way of improving menopausal symptoms. MHT can also benefit your health by improving bone density and reducing the risk of fractures.

MHT can help to reduce a lot of menopause symptoms including hot flushes, night sweats, tiredness, sleep issues, anxiety and vaginal dryness

MHT is safe to use for most women in their 50s or for the first 10 years after the onset of menopause.

The added risk for blood clots, stroke and breast cancer while taking MHT is very small, and similar to that for many other risk factors such as being overweight.

### Non Hormonal Therapy

If you still need treatment, but are unable to or do not want to use menopausal hormone therapy (MHT), there are non-hormonal prescription medications available.

Prescription medication options can help with hot flushes, night sweats and changes in mood and sleep patterns.

*Dr Eloise Fry is now holding a Menopause Clinic on Thursday evenings at Wakefield Health Centre. Appointments are available to both registered and casual patients.*

*To find out more about Menopause Appointments, see Wakefield Health Centre Website [www.wakefieldhealthcentre.co.nz](http://www.wakefieldhealthcentre.co.nz) or phone Wakefield Health Centre on 03 541 8911*





All Accounts Matter LTD

## For all your accounting and tax needs!

If you are looking for a new Accountant, now is the perfect time! I would love to find out about your business and have a no obligation chat about how I can help you. So don't wait, call me now!

Sonia Emerson Chartered Accountant

GST | Tax Returns | Payroll | Bookkeeping | Cashflow Forecasting  
Management Reporting | Rental Statements | Farm Accounts



ACCOUNTING SOFTWARE



2020/2021  
Certified  
Consultant



M: 021 221 1009 | P: 03 541 9005 | sonia@allaccounts.co.nz  
367 Wakefield-Kohatu Highway, RD1, Wakefield 7095

[www.allaccounts.co.nz](http://www.allaccounts.co.nz)

## HANDYMAN

- \* General property maintenance
- \* Clean out/tidy up
- \* Water blasting
- \* Gardening
- \* Chain sawing
- \* Repairs
- \* Demolition
- \* Any farm work

Fair hourly rate. Honest and hard working.

Local references available.

Please enquire to Jeremy Ellis (03) 522 4460

Nelson Tasman  
**KINDERGARTENS**  
NGA KOHUNGAHUNGA MAI WHAKATU KI AORERE  
*For the best possible start*

# Tapawera Kindergarten

We are a recently established kindergarten located on Tapawera Area School grounds offering:

- ◆ A curriculum catering to individual child's needs that is community focused, respectful and inclusive
- ◆ 100% qualified and registered teachers
- ◆ Open all year round
- ◆ A smooth transition to school
- ◆ Flexible hours
- ◆ Up to 30 hours of free early childhood education for 2-5 year olds

Tapawera Kindergarten is welcoming new enrolments now.

Stop by and have a chat with our teachers between 9:30am and 2:30pm or call/email for more information.

Open 8.45am—3pm, Monday—Friday  
021 0878 8070

[tapawerakindergarten@ntk.org.nz](mailto:tapawerakindergarten@ntk.org.nz)

We are located at the end of the Primary block, near the back field.



Up to 30 hours  
free





## Traversing the Tararuas



Last November, funded by a Federated Mountain Club scholarship, former TAS student Louise Hammersley and her friend Isla Ashby embarked on a 14 day tramp in the rugged Tararua Ranges near Wellington. They filmed the whole experience, creating a short video reflecting on the unique challenges and experiences women face in the backcountry.

Stunning scenes backdrop a timely conversation about how women can find their place in the mountains.

You can find their 20 minute documentary on YouTube: 'Traversing the Tararuas (Isla Ashby and Louise Hammersley)' or on Facebook and Instagram under the name @Traversing\_the\_Tararuas.



## New Hub for Tapawera!

We had a consultant spend 6 months canvassing our community members, groups, and agencies, and the conclusion was that there is a need for a fit for purpose Community Hub for Tapawera.

As we already have a number of community buildings that need to be maintained, it didn't make sense to add another.

Looking at the existing buildings, it was decided that the best option would be to replace the existing Community Centre.

These are the reasons why:

This building has been assessed as being earthquake prone and will be condemned in 15 years unless it is retro-

fitted which will be extremely costly (and this cost would not be supported by Council).

It is highly visible and accessible from the main road.

We have an amazing opportunity to get a large chunk of the funding from the Department of Internal Affairs which must be allocated by June, and is conditional on Council and Community support.

The Council has provisionally agreed to support the new hub in Year 2 of their Long Term Plan. They need to see Community support. Submissions can be sent in between the 28th of March and the 28th of April here: <https://shape.tasman.govt.nz/tasmans-10-year-plan>

Any questions, suggestions or thoughts, please get in touch with us! [tapaweraconnect@gmail.com](mailto:tapaweraconnect@gmail.com)

## Rangatahi Youth

Here a little write up about what the youth group has been up to!! :)

"What an incredible term it has been for our Rangatahi Explorers Youth Group. We have had an absolute blast with all our various activities and welcomed a handful of new faces into the group. Our adventures included swimming, skateboarding, and evening at Quinney's Bush Camp, a thrilling Go Karting experience as well as a more chill evening of sports games. Alongside an evening of fun our Rangatahi also get fed some yummy kai which so far has been:

Anarchy Burgers and Purpose HQ Fries  
Potluck Style BBQ  
Pizza from Dominoes  
Homemade Burgers and Chips at Karla's.

We are looking forward to all of the fun that is still to be had this year!"



# WADSWORTH MOTORS LTD.

- Coach Charters & Tours
- Mini Bus Hire.
- School Transport
- Professional friendly drivers
- Members of the Bus & Coach Association

Over 100  
Years of  
Service

wadsworthmotors@extra.co.nz  
100 Main Rd, Tapawera  
www.wadsworthmotors.co.nz

**027 4873167**



## The Lady Tradie

Has your husband got a **round**



Spring has sprung

and the grass has riz !

Do you wonder where a handyman is ?

Can't get one ?

Then call " Jen the Lady Tradie "

for all your outside spring clean-up jobs

\* Gutters full of leaves;

\* Lawns that are starting to bolt;

\* Waterblasting those slippery paths

and all that spring growth that just might get away on you.

**\* Local Person \* Referees Available \***

Consideration & discount shown towards Senior Citizens

**FREE QUOTES**

**Contact Jennifer**

Phone or text: **027 544 2663**

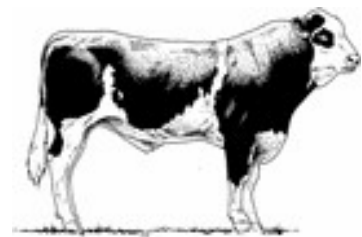
After hours/leave a message: **03 522 4453**

Email enquiries to: [jentheladytradie@gmail.com](mailto:jentheladytradie@gmail.com)

Gillespie—1

MAF approved

Home kill butchery



03 547 7746

Butcher / journeyman

Specializing in quality small goods

Factory: 111 Bolt Rd, Nelson



# Farewell Summer Colour Fun Run

**Sunday 7th April**

**Registration and warm up 10am**

**@Tapawera Rugby Grounds**

**BBQ lunch for sale after**

**Cash only**

**Entry - Adults \$8**

**Kids - 18yr \$2**

**Under 5's - FREE**

Run or walk as many laps as you can or want around the rugby field.

There will be a few obstacles and you will get colour powder thrown at you at various stations.

The more laps - the more colour

Wear WHITE or BLACK to make the colour powder stand out.

Dress up if you want!

Spot prizes and prizes for best dressed!!



**A TAPAWERA SPORT AND RECREATION SOCIETY EVENT**

# Providing gentle guidance when you need it most.



## Simplicity Funerals

Simply respectful. Simply affordable.



**Anna Loach**  
Manager / Funeral Director  
Dip FD Reg. FDANZ

### NELSON & TASMAN WIDE, WE'RE PART OF YOUR COMMUNITY

Phone 03 929 5145 | 276b Queen Street, Richmond  
[nelson.simplicity.co.nz](http://nelson.simplicity.co.nz)



## Tapawera Netball Club March News

Well, it's been an early start for some with netball, while it's still to happen for others.

Before the hop harvest started, we called for a women's team to see if we could get a competitive team up and running. There was a good turnout for that and we have since been able to form two teams! **Tapawera Blue Rock Hops** that will be coached by Belinda Grice and **Tapawera Senior Red** that will be coached by Laura Fry, so thank you to you both for putting your hands up for that role. Since then, they have been training in preparation for the preseason practices commencing.

Belinda Grice Coach commented, "I am looking forward to getting back into coaching after a couple of seasons off. **Tapawera Blue Rock Hops** is looking strong for the start in Grade 4 with hopes to move up a few grades! My manager will be Sarah Jones.

Laura Eyles Coach/Manager commented, "I am really excited that the Tapawera Netball club has been able to make two senior women's teams this season. With pre-season training already underway and with the ability of **Tapawera Senior Red** team it's great to be able to practice against the Tapawera Blue Rock Hops Netball team. I am confident that we will be ready for the 2024 season starting early May."

We are on the lookout for someone or business to sponsor for our second senior team, giving it naming rights, so if your business can help or if you know of any businesses who are interested please feel free to send us an email on our new email address

[tapaweranetballclub1988@gmail.com](mailto:tapaweranetballclub1988@gmail.com)

We also had a good turnout for the school students. We have formed a team combined with Year 7-9 students which will be coached by Toni Derbyshire with Lynda Mitchell offering to be Manager, once again thank you to you ladies for offering your help! Toni is looking forward to the new season coaching the energetic looking bunch of girls, getting to know them and having a fun rewarding season.

We are hoping to combine with Wakefield to form a junior team this year.



Thank you to our sponsors with **Blue Rock Hops LTD** through the support of Glen & Sara, and Brian & Sarah Clayton.



**Tapawera Hotel** is continuing its sponsorship with the school girls team. Thank you, Brendan Gleeson and Shara Khan

We have a Tapawera Netball Club Facebook page, so "like" and "follow us." This social media platform will give up-to-date information on how the teams progress.

### President/Life Member:

Susan Fenemor

### Vice President/Treasurer/Equipment/Social Media:

Tania Higgins

### Secretary:

Lissie Anglesey

### Committee:

Emma Bannister and Coaches/Managers: Belinda Grice, Sarah Jones, Laura Fry, Toni Derbyshire and Lynda Mitchell

Lissie Anglesey, Secretary



## From the Library

Can you believe it's Easter already! I hope the children - and adults - used our craft books to make decorated eggs and Easter bunnies. As we head towards cooler weather remember to look at our gardening books for seasonal ideas and our cookery books for lovely winter puddings.

Our library will be closed over the school holidays. That is from Friday April the 13th until Monday the 29th. Anyone wanting access during that time is welcome to call me on 0272625289 and if I'm about we can arrange a time to open.

Our Book Fair will be held in May, this is always an interesting time as students never seem to get over the pleasure of a new book in their hands even in this digital age.

We will be changing our Richmond collection soon so if there's a particular book or author you like, just let us know and we'll do our best when choosing books there.

Our webpage allows the students to check on their issues and overdues. The youngest children quickly get proficient with the scanner and enjoy doing their own searches. You can do this from home too by just entering the web address which is [nz.accessit.online/TPW00](https://nz.accessit.online/TPW00) (last two digits are zeros). Here you can check our whole catalogue as a guest or obtain your membership number and those of your children, a great way to see what they are reading and helping them return them before they become overdue.

If you are new to the community, you will find us behind the tennis courts at the school. Our hours are 10.30-1.30 every weekday but members can obtain a key from the office leaving their details at the desk. Membership is free.

Happy Reading folks.

Laree for the library team.



# Harcourts Rural

PLATINUM BLUE LIMITED LICENSED AGENT REAA 2008



## TADMOR-BUSHEND RD, TAPAWERA Offers Over \$395,000

Discover a rare gem in Tasman – a 6-hectare bare land block, flat and brimming with productivity. This unique property boasts a dependable water source from a sizable bore and features an elevated potential building site with panoramic views, overlooking the majority of the block from a second, higher terrace. Enjoy breathtaking vistas of Mt Arthur without the hefty price tag.



## 1584 TADMOR-GLENHOPE RD, TAPAWERA Offers Over \$740,000 Plus GST (if any)

This 52 Ha block is a great option for first time land owners, support block, young stock and more..... Made up of some quality flats and terraced flats, with the balance being easy to medium hill country. Water supply is via a reticulated system and natural supply. Improvements include large sheep yards, cattle yards and loading race, and multiple large sheds that could lend themselves to a variety of uses.

Team

**TOBY RANDALL**

027 233 9170 | [toby.randall@harcourts.co.nz](mailto:toby.randall@harcourts.co.nz)



*"...for all creatures great & small..."*

**Regular Tapawera visits  
discounted mileage  
T&Cs apply**

**Ph 544 1200**

[info@tcvet.co.nz](mailto:info@tcvet.co.nz) \* [www.tcvet.co.nz](http://www.tcvet.co.nz)

**25 Edward Street, Wakefield  
35 McGlashen Avenue, Richmond**



**24 hour emergency vet**



**Servicing Tapawera, Kohatu,  
Tadmor, Motueka Valley and  
surrounding areas daily**

**"If its urgent, we'll be there!"**

**Plumbing – Gasfitting – Drainage  
Blocked Drains – Leaky taps...  
Spouting- Hot water - Wastewater  
system servicing**

**Phone, email or Facebook Messenger  
us to book your Job or Free Quote**

**Phone - 03 543 8090**

**Email - [info@tuffnell.co.nz](mailto:info@tuffnell.co.nz)**

**"We thank all our clients for their  
continued support"**

## COME TO A TALKING CAFÉ

Connect with your community



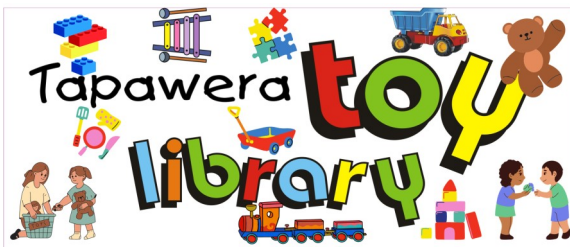
Talking Cafés are an opportunity to meet people, make new connections and learn more about your community.

Pop in for a quick cuppa, or stay for a longer conversation with friendly people. All welcome, no bookings required.

Upcoming Tapawera Talking Cafés  
Purpose HQ Cafe (outside tables) or  
Tapawera Community Centre if inclement weather.  
Tuesday 9th April, 10-11.30 am  
Tuesday 14th May, 10-11.30 am

For more details:  
[wellby.org.nz](http://wellby.org.nz)  
or phone (03) 546 7681

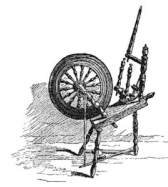




## Volunteers Still Wanted!!

Kia ora Tapawera and our Tamariki, We have a great variety of toys for our Tamariki still. want your Tamariki and family to have fun over the weekend? we have great board games and still have great hire options available for our Tamariki such as a new Baby Alive doll that your children can feed with water to their imagination while she speaks and plays peekaboo with your child also!, Bouncy castle which is now available for birthdays and other events only for children aged up to 5 years old, puzzles, bikes and ride on cars, and many more fun toys to hire for children to have fun over the weekends or throughout the week!

So come down to the toy library to have a look and see all the amazing toys!. Are you looking for something to do on a Monday morning or just want to help out around our toy library and community? Now's the time to apply, we are seeking volunteers to help with opening the toy library so please come in and say hello or contact Jan or message our team on messenger! . Hours and days are still Monday mornings 10:30-11:30 or contact Jan 0273915424 or once again message our team on Facebook messenger. Hope to see you in on a Monday morning!



## Tapawera Creative Fibre

I think autumn is upon us, slightly cooler days and definitely cooler nights. This wind is a nuisance tho, any little rain we get is quickly dried up by the wind. Hope you are all coping with the drought conditions.

Batik dyeing went very well with most members of the group having a project to show. Unlike yours truly who decided to do quite a large project, however I'm hoping that this will be completed fairly soon. Many thanks to Catherine for her help and support with this learning skill.

Coming up we have Smocking, Sewing Skills, Hand Exercises with our resident Physio Vicky, and then finishing our smocking if required.

No matter if you spin, sew, knit, crochet, or cross stitch, you are very welcome to join us at the Memorial Hall 10am – 3pm each Wednesday, or at 10 Totara Street 7pm – 9pm on a Tuesday evening.

Cheers Dallas

## RIWAKA SKIPS

Skip size 3 & 4 cubic metre  
Clean ups, commercial  
General and green waste



Craig (Cracker) Fry  
027 761 0240

RIWAKASKIPS@GMAIL.COM

## Thinking about Growing Trees for Commercial Reasons?

Come along to the local NZFFA field day near Spooners Tunnel on 20th April. It's a great opportunity to learn about species besides *pinus radiata* – and from choices, learn about growing them for sale or other purposes like registering for carbon credits.

Those coming from the Motueka Valley might do well to meet up at the Kohatu Memorial at 9.30am and carshare to the event the other side of Spooners. Don't forget to register to attend at: <https://www.nzffa.org.nz/events/>.

## HOSTED BY NELSON BRANCH NZ FARM FORESTRY ASSOCIATION

*Presented with support from Te Uru Rakau*



These field days are being held nationwide to promote alternative species

### Alternative Forestry Species Field Day "FROM PROPAGATION TO MARKET"

10am, 20th April 2024 at Tunnel Creek Evergreen Forest


Visit Bevan Walker's outstanding forest which includes over 40 Species of trees grown as alternatives to Pine Trees. Many have reached maturity. We will study the top 7 species which have proven to be the most commercially viable.

Meet at the start of Tunnel road on the Northern side of Spooners.

10.20am	Presentation by Bevan Walker Planting to Marketing. A brief history	1pm	Travel back to the Foxhill Hall for light refreshments
10.40am	Forest tour, Bring hardy footwear	1.30pm	Presentation by Matt Stuart. The ETS option
12 noon	Meet back at car park.	1.45pm	Presentation by Te Uru Rakau. Changes from the top, future options
	Presentation by Robert & Eric Appleton. Propagation to planting	2pm	Field day closure
12.30pm	Presentation Justin Wells "logs to lumber" Milling & marketing exotic timber.		

Please register at [NZFFA.co.nz](https://www.nzffa.co.nz) website. For more info email PJ at [prettybridge@xtra.co.nz](mailto:prettybridge@xtra.co.nz) or call Murray on 0210409979





**VOLTZ**  
ELECTRICAL LTD

**Julian McGaveston**  
*Registered Electrician*

For all your domestic, commercial  
and rural electrical needs.

T: (03) 522 4488  
M: 021 566 645  
F: (03) 522 4698

E: [voltzelectrical@silkweb.net.nz](mailto:voltzelectrical@silkweb.net.nz)

2227 Wakefield Kohatu Hwy. RD2. Wakefield 7096



**RURAL MUMS**  
TAPAWERA

**Every Friday 10am - 12pm**  
**Tapawera Memorial Hall**

Open and welcoming time for all mums, dads,  
caregivers, grandparents, and little ones to come  
together and support each other

Rural Mums Tapawera is proud to be associated with



For more details visit our Facebook page: Rural Mums Tapawera  
or Contact Abby on 0221654460



Calling ALL New  
and Returning Players  
**Be Part of the Team**




**TAPAWERA RUGBY**

Register online for the 2024 season  
Either use the QR Code or  
find the link on our FB Page



Rippa U6/7s and Tackle U8s and UP!! All enquires either message Tapawera Rugby Facebook page  
or email [tapawerarugby@gmail.com](mailto:tapawerarugby@gmail.com), Alex 027 389 8661





## From the Principal's Desk...

Tēnā koutou e te Whānau ki te Kura o

Tapawera

We have almost made it to the halfway point of the term.

### Change to Lunch Time Routine

For the rest of this term, we are trialling a new lunch routine to support our students' attendance and engagement in the afternoon modules. Students will be having their play/break first and then eating after. These are the new times...

12.40 pm Play / Break time/ Swim

1.10 pm Eating time

1.30 pm Classtime

We will get feedback from students, staff, and whānau at the end of the trial.

### School and Community Garden

Over the past 12 months or so, there has been an informal agreement with a group from the community and the school garden. Thank you to those community members who have put time and effort into our Garden.

Currently, we are working on making this agreement more formal to ensure the health and safety of everyone involved. Our Kura is governed by health and safety policy and procedures set out by the Health and Safety Act, of 2015 and we must ensure the safety of everyone on site at all times. Therefore, the Board and Management are in the process of formally having an agreement signed with the group. In the meantime, community members are welcome to weed, we just ask that power tools are not used until the formal agreement is signed.

**Update:** the agreement is ready and we are working with the community group to get it signed.

Thank you for your ongoing support and Aroha for our kura.

Sarah Coard

Principal / Tumuaki

[principal@tapawera.school.nz](mailto:principal@tapawera.school.nz)

### NCEA Results 2023

Results for our senior students have compared favourably with National results and show that the blend of academic and vocational pathways presented to our students is the right way forward. Our results across all three levels are 20-30% higher.

Level 1: 81.8% pass rate

Level 2: 93.7% pass rate

Level 3: 100% pass rate

Many of our students do well with the option to take part in NMIT courses and online learning which cater for learning styles and interests. Many of our students have continued with their studies or have left school to pursue

Vocational courses, sending them along pathways that will bring them success.

Our only concern moving forward, is the low percentage of students achieving endorsement levels in their subjects which allow this. One of our main goals for 2024 is to encourage this extra effort from students to hand in higher-quality work.

With effort and self-management, we hope to achieve even higher levels of success next year.

Steve Haunch DP Secondary

### Dates for the Diary..

Week 9 Area School Tournament at Murchison 24-28th March

Week 9 Good Friday 29th March

Week 10 Monday 1st April and Tuesday 2nd April - Easter Holiday

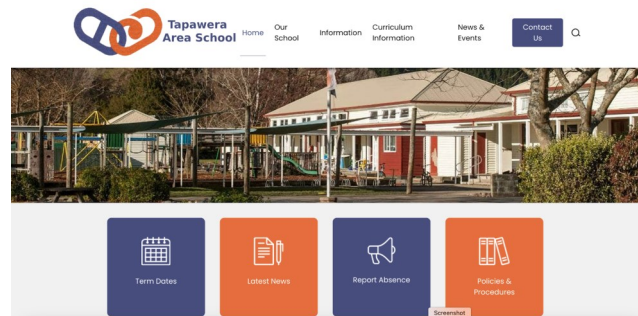
Week 11 Tuesday 9th April Whole School Assembly 2.20 pm

Week 11 School Holidays Start on 13th April

### New Website

We have a new website! Check it out...

<https://www.tapawera.school.nz/>



### Congratulations to our 2024 House Captains



Introducing our Baton House leaders. Congratulations! Alyse Clarke, Keetah Jones, Asha Guyton and Katie Hicks.

# ANZAC DAY REMEMBRANCE

*Lest We Forget*

Tapawera Memorial Hall

25th April 2024

9:00am Start

Morning Tea Provided







## From the Principal's Desk...

Cont.



Introducing our Motupiko House leaders. Shakaia MacDonald, Madison Wagner, Bronco Macdonald, Patrick Ryan



Introducing our Tadmor House leaders. Congratulations! Jada Jelinek, Riley Hook, Hunter Page and Lily Ashton.

### 2024 House Athletics

This year the House competition for Athletics was contested with tough competition and well-supported participation. Each house had their moments of glory on the day with members of both Tadmor and Motupiko breaking school records. A record from 1991 was broken in the 400m by Claude Gaddes in the Under 12 age group with a time of 1.10.56 whilst Bronco MacDonald set a new record in the Under 14 age group with a time of 1.01.50 during the Heats in the morning. Breeze Streeter-Mantell had a great day on the track breaking both the 100m and 200m Under 14

records. In the 200m she ran a time of 27.50secs and 13.15secs in the 100m. Sarah Jones improved on her own Under 19 records in the field events. She improved the Javelin record to 28.22m and the Shot Putt to 9.90m. The standard was high this year and Tapawera will be sending 9 athletes to the Regional Competition on the 11th March at Saxton including a Girls' Under 14 4x100m relay team for the first time.

At the end of proceedings Motupiko who had also done well in the 3000m, 1500m and Triple Jump prior to this event won both Relays to finish just ahead of Tadmor on 301 points compared to 291. They also participated well finishing first ahead of Tadmor with 248 points compared to 235. This continues the standard set by Motupiko in earlier House competitions.





**Book Discussion Group**

Meet: 4th Thursday in month, 10am  
 Contact: Paula Davis ph. 5224341

**Federated Farmers**

Contact: Harry Matthews - Field Rep -  
 0275078901

**Golden Bush Garden Club**

Meet: 2nd Thursday of month  
 Contact: President, Irene Griffith  
 0212525098, or Shirley Percy 5224924

**Golf**

Meet: every Sunday, Ladies 9 hole  
 every Tuesday  
 Contact: Gary Oldham ph. 0278080578

**Historical Society**

Contact: Barbara Carleton ph. 5224317

**Informer**

PO Box 15 Tapawera  
 Email [tapawerainformergmail.com](mailto:tapawerainformergmail.com)

**Justice of The Peace**

Peter Phillips ph. 5224313  
 John Ellis ph. 021 522429  
 Brent Hodgkinson ph. 5224381  
 Francine Currie ph. 5224245  
 Susan Fenemor ph. 0275224009 (text  
 during school hours)

**MENZSHED**

Contact: John Wilmshurst ph. 5224616

**Neighbourhood Support**

Email [info@neighbourhoodsupport.nz](mailto:info@neighbourhoodsupport.nz)

**Netball**

Contact: Susan Fenemor ph.  
 0275224009 (text during school hours)

**Ramblers**

Meet: each month  
 Contact: Shirley Percy ph. 5224924

**Shedwood Hall bookings**

Contact: Tania Higgins ph. 5224587

**St Andrews Church Stanley Brook**

Services every Sunday. Cup of tea  
 afterwards.  
 Contact: Lee Winter ph. 5224160

**St John – Tapawera**

**For emergencies Dial 111,**  
 Email [info@stjohn.org.nz](mailto:info@stjohn.org.nz)

**Tapawera & Dist. Community Church**

Service: St. Peter's Tapawera. 2nd  
 Sunday of each month at 3pm  
 Contact: Church Office 03 541 8883  
 Vicar: Rev. Don Moses ph. 541 8883

**Tapawera & Dist. Community Council**

Meetings: 3rd Tuesday of month,  
 7pm Tapawera Community Centre,  
 email: [TapaweraTDCC@gmail.com](mailto:TapaweraTDCC@gmail.com)

**Tapawera Community Centre**

Email: Nicola Allan  
[nicolaallan434@gmail.com](mailto:nicolaallan434@gmail.com) or  
[TapaweraTDCC@gmail.com](mailto:TapaweraTDCC@gmail.com)

**Tapawera Connect**

Contact: Phoebe Quinlivan ph. 021 211  
 6730 or 522 4929, email:  
[tapaweraconnect@gmail.com](mailto:tapaweraconnect@gmail.com)

**Tapawera Creative Fibre**

Meet: every Wednesdays, 10am-2pm,  
 Memorial Hall  
 Contact: Dallas Robinson ph. 5224984

**Tapawera Food Bank**

Contact: Suzzi Lankshear ph.  
 0277491063

**Tapawera Jujutsu Club**

Contact: Tony Hammersley ph. 5224609

**Tapawera Music/Country Music Club**

Meet: Alternate Sundays, Tapawera  
 Hotel 7:30pm  
 Contact: Elaine Douglas ph. 5418612

**Tapawera Op Shop**

Open: Wed 10am-3pm  
 Contact: Nicola Allan ph. 0212506232

**Tapawera Playcentre**

Meet: Mon & Thur, 10am -12:30pm  
 Memorial Hall ph. 5224456

**Tapawera Rugby Football Club**

Bookings: ph. Judy Benjamin 5224445

**Tapawera Sport & Recreation Society**

Contact: Judy Benjamin ph. 5224445

**Tapawera Volunteer Fire Brigade**

Contact: Dean Millar Chief ph.  
 0279651399; Ted Oakly Deputy Chief  
 ph. 0210704033

**TAS / Community Library**

Mon-Fri 10:30am-1:30pm. Contact:  
 Lareen Bonnington ph. 5224149  
 Library ph. 5224337/ext. 213

**TESSI**

Contact: Bruce Whyte ph. 5224550

**Toy Library**

Open Monday or via arrangement:10:30  
 -11:30am contact Jan Barker:  
 0273915424 or 5524984

**Visual Arts Society Tapawera**

Contact: Dallas Robinson ph. 5224984

**What's on  
April**

- 7 Farewell Summer Colour Fun  
Run, Tapawera Rugby  
Grounds, 10am
- 9 Tapawera Talking Café, 10-  
11:30am, Tapawera  
Community Centre
- 9 Digi Drop-in Session,  
Community Centre, 11am-1pm
- 11 Garden Club, 11am, 142 Little  
Sydney Road, Riwaka
- 16 Presentation & Discussion on  
TDC Long Term Plan followed  
by TDCC monthly meeting,  
Community Centre, 7pm
- 18 Cancer Society Survivors and  
Thrivers Support Group, 1pm-  
2:30pm, Tapawera Fire Station
- 20 NZFFA Field Day, 10am,  
Tunnel Creek Evergreen Forest
- 20 Articles for Informer close 5pm
- 25 ANZAC Day Remembrance,  
Tapawera Memorial Hall, 9am
- 30 Tea and Talk, Memorial Hall  
10:00am - 11:30am

**GP & Nurse at  
Tapawera Clinic**

(during school term time):

**GP clinics – Mondays**  
9am – 12 midday

**Nurse clinic – alternate**  
Tuesday mornings - phone  
541 8911 for dates

**Wakefield Police**

Constable Jamie White –  
[jamie.white2@police.govt.nz](mailto:jamie.white2@police.govt.nz)  
 Constable Matthew Berquist –  
[matthew.berquist@police.govt.nz](mailto:matthew.berquist@police.govt.nz)  
 Non Urgent (CRL) – Call 105  
 Happening Now – Call 111