



Pride In Our Town

One thing I really love about Tapawera is the amazing diversity of people. Everyone brings their own sense of individuality, creativeness, and passion. In their workplace and into their homes. Like a big melting pot, stir this all together and you get a community full of life and the odd entrepreneur! My spotlight this month focuses on our newest business in town and colourful character, Alan Gundry from Anarchy Burgers.



Q How long AI have you lived around Tapawera? And what brought you here?

I came from Rai Valley 5 years ago. I'm originally from Great Barrier Island. Anywhere I settle needs to have good pig hunting as it's a passion of mine so Tapawera ticked the box.

Q If you lived anywhere else, what would you miss about Tapawera?

Tapawera is so central to everything. Beaches to fish, mountains, rivers, lakes, and towns if needed. Hard to beat really.

Q Who are the people in your family?

Kora, Dax, Shea, Tain, Ava, Johanna and Amelia

Q What is your favourite season? And why?

I enjoy the transition seasons, spring/autumn. They have a promise of the unknown, change, I like that. However all

have bonuses like summer and swimming.

Q Do you have a favourite swimming hole around Tapawera? Or a place to unwind locally?

There is a great spot up the Tadmor/Baton Valley road great for swimming, and although not local, I really enjoy diving out Titarangi way.

Q Can you think of anyone that has made a really positive impact on your life?

I've been very fortunate over the years to have many people pass through that have helped shape the person I am. Some for a short time, some a longer time. The key is learning when to let go and keep moving forward for yourself and your life. Locally I am very grateful to Keri Subritzky and her whānau for the opportunity to own and operate out of this very cool vehicle, and Jo Higgins who has supported me right from the start, getting this business going and now parked centrally for trading.

Q What would you like to be remembered for?

Hard one, hmm pushing boundaries, authentic, being kind and generous, positive and a willingness to help others.

Q What piece of advice would you like to pass onto our youth just starting out?

Do the mahi. Work hard, play hard! Haha Don't ever be afraid to dream big, think about it, then manifest it!

Q Why burgers? Anything new on the burger horizon?

Burgers are the most common street food with soul in the world. It's been 8yrs in the making from concept to now. I love to have my family involved, and they supplied a lot of the inspiration behind the business. I've always got new recipes I would like to try out but for now I'm just streamlining the processes, building confidence in my children to be able to run it well and just get the flow from opening to closing really nailed.

A big shout-out to AI for the Q & A. I arrived at a busy time and so your time you gave me was very appreciated. Tapawera, if you haven't tried a burger from 'Anarchy Burgers' yet, then you definitely are missing out! They are delicious and really filling... Cheers AI and team :)

**Nicola Allan
CLDP Community Connector
Tapawera Connect**

WADSWORTH MOTORS LTD.

Over 100
Years of
Service

- Coach Charters & Tours
- Mini Bus Hire.
- School Transport
- Professional friendly drivers
- Members of the Bus & Coach Association

wadsworthmotors@extra.co.nz
100 Main Rd, Tapawera
www.wadsworthmotors.co.nz

027 4873167



RURAL POST, RD 2 Wakefield

Contact Nick & Jackie Costley for all your RD 2 Wakefield postal needs.

Including prepaid envelopes, stamps, courier items and local freight from Wakefield, Dovedale and Tapawera. Prescriptions from Wakefield.

Phone 0275418581

Mark & Tania Gill
T/A MTJ Transport
RD2, Nelson
NZ Post Rural Contractors
Servicing
Motupiko-Korere-Kikiwa-Tophouse-St Arnaud-Glenhope

For all your Postage, Milk & Courier Freight
Operating 3 Days Weekly
(Monday-Wednesday-Friday)
Departing Nelson 8.00am
Phone 546 6295

Material & adverts for Informer

All material is to be sent to either:

Informer, PO Box 15, Tapawera, 7055
or email- tapawerainformer@gmail.com

To be received by 5pm
20th of the Month

If emailing a word document please send in Word as an attachment.

If sending an advert please save as a jpeg before sending.

Please check your emails to see your article/advert has been received as sometimes there needs to be alterations.

Advertising rates for Informer

Standard ad	Pay monthly	Pay annually
1/4 page advert	\$32.50	\$286
1/2 page advert	\$45	\$396
Full page advert	\$65	\$572

Adverts that require editing may cost extra

The Informer is produced and published by the Tapawera and Districts Community Council, PO Box 15, Tapawera, 7055;
email: tapawerainformer@gmail.com
Circulation 635
Editor: Gill Hammersley
The Editor and Publisher try to ensure information published is truthful

and accurate, but do not accept any responsibility for errors or omissions, or for any consequences of readers' relying on the information published. Opinions expressed by contributors may or may not be endorsed by the Editor or Publisher.
All material submitted, whether editorial or advertising, is accepted at the discretion of the Editor and the Publisher.

Purpose HQ Fitness Trust

GYM

Well our much needed consulting room is underway. We were fortunate enough to get some funding to support some of the renovations and we should have this completed in the next few weeks. Once this has been completed we will let you know who, when and how you can access the services that will be provided. This is an exciting milestone for the gym and we appreciate all the support and of course our Trustees that have worked so hard to make all the positive changes in our small but amazingly awesome community gym.



CAFE

Please keep an eye out for our changes in hours as we start to get to our cooler days. We will have new operational winter hours.



SEED NZ

Community Garden

Thank you to all the volunteers that have been in contact to ask what is happening with the Community Garden. We are still working with the school to sort out next steps. But if this proves to be too complex we may look at other whenua options to ensure there is less (hopefully no more) stop starts. Thank you again to Whaea Denise and Lee Leary (Nan) for all your past efforts. We will and are missing you both!! And to all our whānau that have helped to this point thank you!! We hope to update you soon.

TATT Firewood Bank

After a couple of questions on our FB post advertising our firewood for sale and not being aware of how things operate.....I'm guessing if one person is asking then there might be others that would like to ask. So when I got back I made a point of randomly asking a few community members if they knew what we were about and how we operate and the great thing was I had a couple of different replies. I have put them below with answers.

"Of course you would offer it to sell, it costs money to process and store and the machines and equipment you need to use,

petrol etc are not free...Nah I get it".

Great, yes there is equipment and vehicle wear and tear, petrol, diesel, labour, travel and additional delivery costs. Whenua and storage that all cost money.

"I know you're doing it for the community like last year.....but since the post I am a bit confused"

So sorry about that. It's not a confusing operation at all. Basically we will sell to those that are buying and we will supply to those that find themselves in a position where they need support. Speaking from personal experience I have been in that position and was super grateful for the help. I am now in a much better position so happy to pay it forward. When you purchase from TATT you are supporting us to be able to continue to process what we have and in essence paying it forward as those that cannot pay we will still provide firewood to.

"How does it work....do I have to be getting a benefit to get help"

No you don't. We operate on a very high trust model. As in, if you say you need it we will supply it. Everyone is in different positions at different times of the year and this year we have already supplied 12 loads of wood for free. Each solution is bespoke to the whānau. Our goal is to have no home/whanau in our community cold this winter!!

"I get there are costs to process it and all....but If there are profits what will you do with them?"

The trust has applied for funding to support the outgoings of the TATT operation. As yet we are still waiting to hear if we have been successful. So currently what we sell is going straight back into operational costs. If and hopefully when TATT does start to make some profits, it will go back into training our rangatahi, the purchase of equipment and to employ more locals.

All great questions and comments. But if you still need clarity on what and why we are doing what we do.....More than happy to have a korero.

And finally I would like to send a massive mihi to **Bones and Karen Jones** who are the amazing community members making this project a reality. SEED NZ and our Community (I am sure) appreciate you both loads.

If you would like to access our Firewood services please contact Karen on 027 222 2479.





Survivors and Thrivers Support Group Tapawera

**Connect and chat with others
impacted by cancer**

Thursday 18 April

1.00pm-2.30pm

**Tapawera Fire Station
Main Road, Tapawera**

**To register please contact
maureen.urwin@cancernelson.org.nz
Ph 03 528 7669**



Menopause. Part 1 by Dr Eloise Fry



Menopause is a hot topic at the moment. Literally, for those women with hot flushes!

The reason menopause has become a popular topic on TV, social medial, internet and magazines is due to the increased understanding around available treatments for menopause and their safety.

There has been a lot of study of menopause hormone treatment over the past 20 years and we now know that menopause hormone treatment is safe and very effective for most women.

So, what is menopause?

'Menopause' is when a woman finishes having periods. The average age for menopause is 51.

'Perimenopause' is the time around menopause when hormone levels are changing, also known as the time of hormonal chaos! Usually lasting 5-10 years.

Every woman is affected by menopause in some way, symptoms include:

- Hot flushes and night sweats
- Problems sleeping
- Anxiety and mood issues
- Pain in joints
- Tiredness
- Vaginal Dryness
- Urinary Tract Infections

Dr Eloise Fry is now holding a dedicated Menopause Clinic on Thursday evenings at Wakefield Health Centre. Appointments are available to both registered and casual patients (ie you do not have to be a patient at Wakefield Health Centre to book an appointment).

To find out more about the Menopause Appointments, see Wakefield Health Centre Website or phone Wakefield Health Centre on 03 5418911

To be continued next issue.....

Bon Voyage Katelyn by Gavin Drummond

One of our wonderful Practice Nurses is moving on for new adventures elsewhere. Katelyn has been part of the team here at Wakefield for a long while and we are sad to see her go. I know that her work here in the community has had positive impacts for so many of our patients. We all wish her well on her next adventure.



Library News from Tapawera Area School and Community Library

The new year has got going with plenty of new students showing up in the library, it occurs to me that these students all have families new to the district that maybe don't know that we are a community library too.

If you are new to the district, you'll find us behind the tennis courts at the school, our hours might sound short as they are now 10.30-1.30 Monday to Friday but members can access the library during all school hours by obtaining a key at the office and leaving their details at the desk. It costs nothing to join and our adult section of over 3000 books has to be seen to be believed so do come in for a browse, our friendly librarians, that's myself Laree, Kelly and Cindy would love to meet you.

You can see our whole catalogue by using our website. You will find it at nz.accessit.online/TPW00 (last two digits are zeros) Anyone can use it as a guest or you can access your own account by asking us for your membership number, you can also ask for your children's number which can be a great way to check on their overdue books.

Talking about overdue books, our automated email system for overdue reminders will be springing back into life after having some down time.

Our Lucky Book Club is running again and will be a great place to stock up on all those presents during the year. They do have many specials as low priced as \$3 so well worth a look.

As above our hours are Monday to Friday 10.30-1.30, phone 5224337 ex213

email library@tapawera.school.nz.

Meanwhile happy reading folks

Laree for the library team

Peer Support Group

Every Friday morning
11-12 at the
Community Centre
Shared morning tea



For sufferers of
chronic illness
including CF,
Fibromyalgia,
depression...
anything really!

A safe and caring space to share,
find connection and give and
receive support

To register, contact Phoebe on
0212116730, or email
tapawerconnect@gmail.com

EXCLUSIVE



TAPAWERA 368 Tapawera-Baton Road
Peaceful Country Living....!

Easy comfortable living here on this 14.5ha lifestyle property. Approximately 4km from the Tapawera Village, this flat fertile grazing block runs along the edge of the Motueka River. The centrepiece is a four-bedroom home centrally placed and set amongst expansive lawns and established easy-care gardens. The living areas and deck face north for all-day sun. Farm improvements include a three-bay implement shed, stables, and tack shed, plus excellent sheep and cattle yards. A bonus is an irrigation consent to irrigate the property. The Tapawera region is a growing destination with a mix of lifestyle properties, traditional farms, the expanding hop and apple industries, and a new motorsport park.

4 1 2

\$1.23M GST Inclusive

VIEW By Appointment Only

Doug Smith
M 027 543 2280
E douglas.smith@pggwre.co.nz



pggwre.co.nz/NEL38596

Nelson Tasman
KINDERGARTENS
INGA KOHUNGAHUNGU MAI WHAKATI KI AUREKI
For the best possible start

Tapawera Kindergarten

We are a recently established kindergarten located on Tapawera Area School grounds offering:

- ◆ A curriculum catering to individual child's needs that is community focused, respectful and inclusive
- ◆ 100% qualified and registered teachers
- ◆ Open all year round
- ◆ A smooth transition to school
- ◆ Flexible hours
- ◆ Up to 30 hours of free early childhood education for 2-5 year olds

Tapawera Kindergarten is welcoming new enrolments now.

Stop by and have a chat with our teachers between 9:30am and 2:30pm or call/email for more information.

Open 8.45am—3pm, Monday—Friday
021 0878 8070

tapawerakindergarten@ntk.org.nz

We are located at the end of the Primary block, near the back field.



Up to 30 hours
free





Senior's Snippets with Janine Leeden, 0277525975

It's been great to have access to the NTCTT van to start planning some social outings for my Seniors. On Thursday 22nd February a small group of us joined the Age Concern organised Spin Poi activity at Isele Park in Stoke. Much fun was had and hopefully we can bring some of that (more controlled) spinning to our Friday Sit and Be Fit class.

The next outing I'm planning is to join another Age Concern activity doing a Heritage Walk at Miyazu (Japanese) Gardens in Nelson, followed by lunch somewhere. I already have a few names, so if you are interested please get in quick and give me a call to book your place as I can only take 6. The cost will be \$12 for the return trip plus your own lunch.

To coincide with when people are in the Village attending the **Wellby Talking Cafe on Tuesday 12th March 2024**, enjoying the sunshine outside the Purpose HQ Cafe, I have organised for Helen McCubbin from Tasman District Library to offer their **Digi Drop-in session at the Community Centre from 11am-1pm**. For the next few months she has information that might make internet access more affordable for those struggling financially using **Skinny Jump**. If you currently can't afford and don't have internet connection at home, please call in to find out if you qualify and get set up on the day!

(This offer is NOT just for Seniors!)

We continue to meet weekly at St Peter's Anglican Church for Sit and Be Fit, from 10-11am for some gentle exercise, not so gentle laughter, and a cuppa, all for \$3. Please feel free to come along and join in for some strength and balance exercises as well as some important socialising. This is part of the Falls Prevention programme run by Nelson Bays Primary Health for ACC.

Information from the ACC website - <https://www.acc.co.nz/newsroom/stories/keeping-your-balance-with-nymb/> - states:

Last year, around 172,000 people aged 65 and over had a fall-related ACC claim – that's 22 per cent of that age group.

It's a big problem, so we're doing something about it.

We've launched Nymb – a free, fun and easy-to-use app that is fully funded by ACC.

Nymb is designed to help people 50 and older stay on their feet, combining simple body movements with brain games to challenge both the brain and body.

The app is part of our older people's programme, Live

Stronger for Longer, which is focused on preventing falls and fractures.

For those with mobile phones or tablets (not the ones from the pharmacy...) you can download Nymb at the Google Play or Apple App store. Look for this symbol.



Our monthly **Tea and Talk**, for over 65s, will be on **Tuesday 26th March 10-11.30 am at the Memorial Hall**. Please join us for some relaxed and fun socialising. \$3 gets you morning tea and some great connections.

I have now connected, for the community – not just Seniors, with **The Big Bake Up in Wakefield**. We are wanting to establish a central point where those in need of some extra support in times of need can pick up a frozen meal to get them through. In the meantime please give me a call if you know of a need – 02775259975.

Community Autumn/Winter Workshop Ideas 2024

Over recent times Tapawera Connect has run seasonal workshops that have proved really popular within our community. We love to bring these workshops to inspire locals to learn new skills, encourage independence and resilience in our everyday lives, and empower every participant to 'have a go'! We have some more ideas for workshops that we would like your feedback on. If any resonate with you, please email or text Nicola with a 'I'm interested' name of workshop, your name and phone number. If we get enough interest in each workshop then we will run it. It's that simple! ☺ We will endeavour to keep workshop fees set at \$20-\$40 per person to make it accessible for everyone and we will also try to keep day workshops only where possible.

- Fermented Foods
- Autumn Food Foraging (If you put your name down for the previous one but missed out due to numbers I still have your name down, and I will contact you)
- Herbal Skincare
- First Aid Training with St John
- Defensive Driving (This is four 2hr classroom sessions and one 1hr one-on-one practical session. Must hold a restricted licence for learners for a minimum 4 months. Gives 6 months off restricted licence so well worth it)

Nicola Allan
CLDP Community Connector
Tapawera Connect
nicolaallan434@gmail.com
0212506232



Calling ALL New
and Returning Players
Be Part of the Team



TAPAWERA RUGBY

Register online for the 2024 season
Either use the QR Code or
find the link on our FB Page



Rippa U6/7s and Tackle U8s and UP!! All enquires either message Tapawera Rugby Facebook page
or email tapawerarugby@gmail.com, Alex 027 389 8661

TAPAWERA ELECTRICAL

Tony Stephens

Registered Electrician

Ph/fax 5224257
0276249489

All electrical needs
Domestic & Rural

Wiring, faults, some home appliance repairs
New heat pump installations



Free Quotes
Competitively priced

The Lady Tradie

Has your husband got a **ROUND TO IT**



Spring has sprung

and the grass has riz !

Do you wonder where a handyman is ?

Can't get one ?

Then call " Jen the Lady Tradie "

for all your outside spring clean-up jobs

* Gutters full of leaves;

* Lawns that are starting to bolt;

* Waterblasting those slippery paths

and all that spring growth that just might get
away on you.

* **Local Person** * **Referees Available** *

Consideration & discount shown towards Senior Citizens

FREE QUOTES

Contact Jennifer

Phone or text: 027 544 2663

After hours/leave a message: 03 522 4453

Email enquiries to: jentheladytradie@gmail.com



TAS News

From the Principal's Desk...

Tēnā koutou e te Whānau ki te Kura o Tapawera

Welcome Back to 2024! We hope you had an amazing Summer break with your whanau and are ready for a new school year.

This year we are working towards making our new vision come alive.

With 'FIRE' in our hearts, empower, learn and grow.

Our new strategic plan sets out three main areas of mahi:

1. Students and staff will live our 'FIRE' way to ensure we all learn in a happy, safe, and supportive environment.
2. We will lift expectations and student outcomes by providing an innovative 21st-century local curriculum that meets students' needs and aspirations.
3. Students and staff will have a sense of whakamana (empowerment) and kotahitanga (shared belonging) by applying a Te Ao Māori lens to our pedagogy and practice.

We look forward to sharing progress and getting whānau voice and input into achieving these goals. Please see the overview page attached We are currently working on the annual implementation plan.

Cellphones at School As everyone is aware our government has introduced a policy to ban cellphones in school. This ban comes into effect on 29th April 2024. Currently, we are having discussions with teachers, students, etc about what this will look like at Tapawera Area School and we are required to update our current policy to reflect the new ban.

We will keep you updated on our progress towards our policy over this term. If you have any feedback or questions please feel free to come and see me or send an email.

Vaping at School Unfortunately, we have had an incident of vaping at school already this year. Students are aware we have zero tolerance for vaping at school or having vaping products at school. Students caught will be automatically stood down.

Overall, we have had a positive start to 2024, we welcomed 14 new students to kura with a successful mihi whakataua and there is a positive buzz around the place.

Thank you for your ongoing support and Aroha for our kura.

Sarah Coard
Principal / Tumuaiki

Mihi Whākataua

What a fabulous Mihi Whākataua we had on Thursday to warmly welcome our new whānau to our kura. We welcomed 14 new students this year.



Welcome to these three out of four new children in room 3 Mārarewa.

This is what they like to say about their new classroom.

Meeka MacDonald

I like best about school that we still play inside. It is so hot. I am learning how to read.

Ruby Porthouse

I like best when we go to the pool. We even went in the rain. That was fun. Malise is also looking out for me.

Amaia-Rain Power

I like about school that we all play together. I am happy to be in class with Ashley.



Dates:

Week 2 Fri 9th February Tabloids Event

Week 3 Thurs 15th Feb Yr 6-13 Swimming Sports

Week 5 Wed 28th Feb Yr 6-13 Athletics

Week 6 Marahau Camp Yr 5-6 Mon 4th-Wed 6th Mar

Week 7 Primary Swimming Sports (Rm 2-5) Tue 12th Mar 1.30 - 3.10

Week 9 Area School Tournament Murchison 24-28th Mar

Week 9 Good Friday 29th March

Week 10 Mon 1st April and Tue 2nd April - Easter Holiday

Week 11 School Holidays start on 13th April

COME TO A TALKING CAFÉ

Connect with your community



Talking Cafés are an opportunity to meet people, make new connections and learn more about your community.

Pop in for a quick cuppa, or stay for a longer conversation with friendly people. All welcome, no bookings required.

Upcoming Tapawera Talking Cafés
Purpose HQ Cafe (outside tables) or
Tapawera Community Centre if inclement weather.
Tuesday 12th March, 10-11.30 am
Tuesday 9th April, 10-11.30 am

For more details:
wellby.org.nz
or phone (03) 546 7681



Tasman Bay Chiropractic 64 Oxford Street Richmond



Keeping you in the game since 2002

Referrals, families and
all new clients welcome

Visit our website or call for more information

tasmanbaychiropractic.co.nz

03 544 4554

Monday-Saturday

Find us on 



Harcourts Rural
PLATINUM BLUE LIMITED LICENSED AGENT REAA 2008
Your Local Rural and Lifestyle Experts

Not only do we work with a large network of Rural and Agri specialists across the sector, keeping us up to date with the ever changing market.. But we love what we do.

If you are considering selling your lifestyle or rural property talk to Team Toby Randall and let us show you how we can help you.

Team TOBY RANDALL
027 233 9170 | toby.randall@harcourts.co.nz

HANDYMAN

- * General property maintenance
- * Clean out/tidy up
- * Water blasting
- * Gardening
- * Chain sawing
- * Repairs
- * Demolition
- * Any farm work

Fair hourly rate. Honest and hard working.

Local references available.

Please enquire to Jeremy Ellis (03) 522 4460



Tapawera Netball Club

February News

Well, it's been an early start for some with netball, while it's still to happen for others.

Before the hop harvest started, we called for a women's trials to see if we could get a competitive team up and running. There was a good turnout for that, and since then, they have been training in preparation for the pre-season practices commencing. If any women are interested contact us via email tapaweranetballclub1988@gmail.com or PM the Tapawera Netball Club on Facebook. More details next month on the team(s) dynamics.

We will have a registration day on **Saturday 9th March 9.30am** at the school courts open to all genders, local schools like Dovedale/Lake Rotoiti/Home schooled students and Tapawera Area School Students. To know who's interested can you please register on SPORRY before that day, ideally have it done by Friday 8th March.

<https://www.facebook.com/100064506680271/posts/793536172806598/?mibextid=WC7FNe>



Thank you to our sponsors with **Blue Rock Hops Ltd** through the support of Glen & Sara, Brian & Sarah Clayton, supporting the Senior Women's Team.



Tapawera Hotel is continuing its sponsorship. Thank you, Brendan Gleeson and Shara Khan.

We have a Tapawera Netball Club Facebook page, so "like" and "follow us." This social media platform will give up-to-date information on how the teams progress.

We wish to thank very much **Lisa McGaveston** who has stepped down from the role as Secretary, for her contribution to the club.

President/Life Member: Susan Fenemor

Vice President/Treasurer/Equipment/Social Media: Tania Higgins

Secretary: Lissie Anglesey

Committee: Emma Bannister, Renee MacDonald, Coaches/Managers TBC

Susan Fenemor
President/Life Member



Golden Bush Garden Club



February's meeting was held at Linda and Paul Milsons' property in the Motueka Valley. Since the last time we were there Linda has been extending her garden with a native tree planted area. The garden was looking quite colourful with begonias, zinnias and other flowers in full bloom. As always the view looking down on the Motueka River was quite special. Although it was a hot day the surrounding trees gave welcome shade. The two raffles of begonia plants and anemone bulbs were won by Mahala and Kathy.

Next meeting is Thursday March 14th, 11am at Jean and Paul's unique property at 3240 Kohatu-Kawatiri Highway, Glenhope. Travel over the Hope Saddle and 5 kms farther on is the old Glenhope Railway Station in the paddock on the right hand side of the road. Red shed on the highway is opposite the gateway and letterbox. Please leave gates as you find them. Follow the ex railway line for 1.7 kms. You will go through a hill cutting and paddocks before you come to the boundary – just keep going. Please bring your own thermos or cold drink, as the property is off the grid, and your lunch and seat. There will be a raffle and auction. The club hasn't been to Jean and Paul's for some time and it is well worth a visit.

Still waiting for some rain – the hydrangeas and rhododendrons are looking sorry for themselves although the roses are battling on bravely. The garden is starting to look a bit like camel country though.

Happy gardening in the cool of the mornings and evenings.
Shirley.



Milson's woodland garden

Farewell Summer Colour Fun Run

Sunday 7th April
Registration and warm up 10am
@Tapawera Rugby Grounds
BBQ lunch for sale after
Cash only
Entry - Adults \$8
Kids - 18yr \$2
Under 5's - FREE

Run or walk as many laps as you can or want around the rugby field.
There will be a few obstacles and you will get colour powder thrown at you at various stations.
The more laps - the more colour
Wear WHITE or BLACK to make the colour powder standout.
Dress up if you want!
Spot prizes and prizes for best dressed!!



A TAPAWERA SPORT AND RECREATION SOCIETY EVENT



VAST

Our 2024 VAST exhibition was a very successful and enjoyable exhibition. Congratulations to all our artists and craft people for making our exhibition such a great success.

Members of VAST want to thank our Sponsors, without whom we would have some difficulty running our show.

- Gazzas Sign Art
- Tapawera 4 Square
- New Hoplands
- Nelson Honey
- Sherry River Apiaries
- Tadmor Jams
- Tapawera Rugby Club
- Kahi Collective
- Impressions Richmond
- Nick and Jackie our Posties

We also thank Sharon & Richard Rogers, Stu Bryant, Lloyd Faulkner & Flat Rock Kohatu for allowing us to put up our signs on their properties, many thanks to Sharon, Stu and Mike for helping Brian with the signs.

Thanks also to the Tapawera Community for supporting our artists, visiting the Art Show, buying art, crafts and raffles

All raffles have been drawn and the winners notified. Many thanks to Kevin who donated the trailer load of firewood. The raffle was very successful.

Thanks to all VAST members who helped with setting up, door roster, take down and clean up.

Finally a massive thank you to Kirsty our Guest Artist this year. Beautiful art work and very well received.

See you in 2025

Dallas

TAPAWERA HAVE YOUR SAY!

The **Speed Management Review** is presently open for the Tasman area. Councils are still able to reduce harm on our roads through speed management plans and infrastructure improvements. Here is an opportunity to have your say for Tapawera and submit feedback. The main road leading into our school zone needs to be reduced! We could also use a decent pedestrian crossing for young and elderly crossing from the school to the car park oppersite. We have still to the 28th February. From there, the Joint Regional Transport Committee will make its recommendations to TDC and NCC to reflect what the community wants. **Please take five minutes** to go online to make a submission.

@ [shape.tasman.govt.nz/speed-review](mailto:safespeeds@tasman.govt.nz) or email to safespeeds@tasman.govt.nz





All Accounts Matter LTD

For all your accounting and tax needs!

If you are looking for a new Accountant, now is the perfect time! I would love to find out about your business and have a no obligation chat about how I can help you. So don't wait, call me now!

Sonia Emerson Chartered Accountant

GST | Tax Returns | Payroll | Bookkeeping | Cashflow Forecasting
Management Reporting | Rental Statements | Farm Accounts



ACCOUNTING SOFTWARE

myob

2020/2021
Certified
Consultant



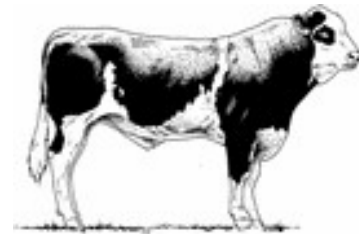
M: 021 221 1009 | P: 03 541 9005 | sonia@allaccounts.co.nz
367 Wakefield-Kohatu Highway, RD1, Wakefield 7095

www.allaccounts.co.nz

Gillespie—1

MAF approved

Home kill butchery



03 547 7746

Butcher / journeyman
Specializing in quality small goods
Factory: 111 Bolt Rd, Nelson



TOWN & COUNTRY

VET

"...for all creatures great & small..."

**Regular Tapawera visits
discounted mileage
T&Cs apply**

Ph 544 1200

info@tcvet.co.nz * www.tcvet.co.nz

**25 Edward Street, Wakefield
35 McGlashen Avenue, Richmond**



24 hour emergency vet

voltz

ELECTRICAL LTD

Julian McGaveston
Registered Electrician

For all your domestic, commercial
and rural electrical needs.

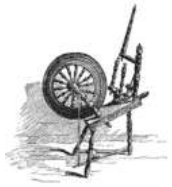
T: (03) 522 4488

M: 021 566 645

F: (03) 522 4698

E: voltzelectrical@silkweb.net.nz

2227 Wakefield Kohatu Hwy. RD2. Wakefield 7096



Tapawera Creative Fibre

Our open day on 31st January was well attended by members of other Creative Fibre Groups around the Top of the South. Our visitors took advantage of the day and visited the Art Exhibition while they were here.

Many thanks to all our members who helped make the day a great success.

Coming up in our programme we are beginning to learn batik dyeing. This will run two Wednesdays, 28th Feb and 6th March. Following that the group will be learning smocking.

No matter if you spin, sew, knit, crochet, or cross stitch, you are very welcome to join us at the Memorial Hall 10am – 3pm each Wednesday, or at 10 Totara Street 7pm – 9pm on a Tuesday evening .

TAPAWERA SHEARS 2024 Held at Tapawera, 27th January

The Tapawera Shearing Committee gratefully acknowledge and appreciate the support of the following sponsors in our recent shearing competitions:

**Sollys Freight
Segard Mesural
aerowork**
**Rotoiti Downs, M & I McConochie
Barker Contracting Ltd**
**D & T Newport, Dewes Dorset Down Stud
Hogarth Spreading
A C Palmer & Sons
Island Valley Farm
Fry Contracting
Nelson Drywall**
**E L Hodgkinson Shearing
Marlborough Helicopters
Ken Thomas, Ewe Scanning
Hayden Morgan Electrical
A & D Win**
**Mt Jones Farm, K & P Irvine
W & L Anglesey
Fence It Nelson
Nelson Federated Farmers
NZ Valley Gold**

**CRT Farmlands,
Fertilizer NZ, PGG Wrightson**

Special thanks to the wool handlers, Kerry on the mic', all the judges, and especially Kerry and Pam Irvine for the use of their sheep

OUR SPONSORS SUPPORT US, PLEASE SUPPORT THEM !!

Toxoplasmosis

A quick note on a topic that was raised within our community recently.

While we have no concerns of any widespread issue at this stage, we'd like to let people know of the risks that Toxoplasmosis can present and ways to reduce it affecting you or even the animals on your farm.

Toxoplasmosis is an infection with a parasite called *Toxoplasma gondii*.

This parasite can infect most animals and birds.

It can only go through the entire cycle of reproduction in domestic and wild cats. These are the main hosts for the parasite.

The parasite's eggs are shed in cat faeces, which can then pass on the infection to any warm-blooded animal - including birds, sheep, goats and marine mammals.

Infection of humans can occur through ingesting the parasite's eggs directly from the environment, such as through unwashed vegetables, or from tissue cysts in improperly cooked meat from an animal that has previously been infected.

Reducing the incidence of cats defecating near food and water supplies for farmed animals may reduce the risk of toxoplasmosis transmission.

At this stage, there is no standard test for the disease in wastewater that could produce a validated result in confirming toxoplasmosis. But by taking a few precautions, you can also reduce the risk.

One measure that might help is only feeding your pet cats dry, canned, or cooked food.

As well as this, cat litter boxes should be emptied daily, and we certainly discourage people from flushing cat litter down the toilet or any method that could end up in nearby waterways or the vicinity of other animals.




Women's Day Tapawera

8th March 6:00pm - 9:00pm



Paint & Sip



What: A fun night out painting, sipping and coming together as a community to celebrate women and to raise money for the women's refuge charity.  **WOMEN'S REFUGE**

Where: Shedwood Hall Main road Tapawera

Who: For Women of all ages and all communities

Each ticket purchased will come with a complimentary glass of bubbles or non alcoholic punch, as well as delicious snacks from the grazing table provided.



**TICKETS
ON SALE**

TICKETS CAN BE PURCHASED FROM THIS LINK BELOW OR ON
FACEBOOK EVENTS SEARCH (PAINT & SIP TAPAWERA)
[HTTPS://WWW.EVENTBRITE.CO.NZ/E/PAINT-SIP-WOMENS-DAY-TAPAWERA-TICKETS-820899090277](https://www.eventbrite.co.nz/e/paint-sip-womens-day-tapawera-tickets-820899090277)
THERE WILL ALSO BE SOME DOOR SALES

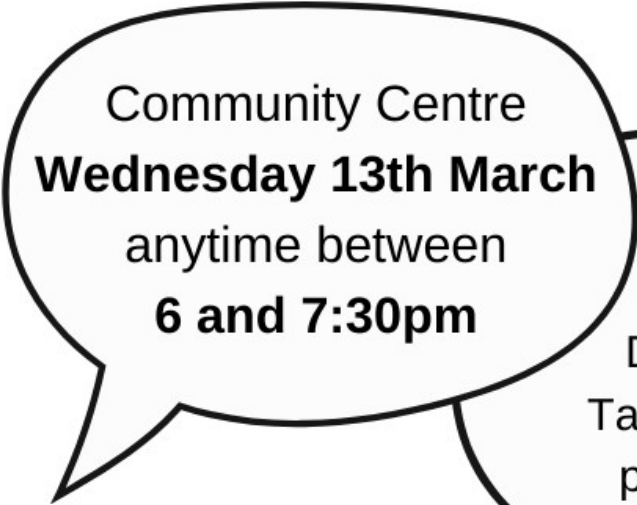
\$20 per ticket




COMMUNITY HUB
INFORMATION EVENING



**DROP IN AND
CHAT**



Community Centre
Wednesday 13th March
anytime between
6 and 7:30pm



An opportunity to
chat with Tasman
District Council, TDCC &
Tapawera Connect about
plans for the **new hub**



Providing gentle guidance when you need it most.



**Simplicity
Funerals**

Simply respectful. Simply affordable.



Anna Loach
Manager / Funeral Director
Dip FD Reg. FDANZ

**NELSON & TASMAN WIDE,
WE'RE PART OF YOUR COMMUNITY**

Phone 03 929 5145 | 276b Queen Street, Richmond
nelson.simplicity.co.nz



Sunday 18th Feb saw the little community bus of the **Nelson Tasman Community Transport Trust** taking passengers down the valley for a very informative field day event organized by the **Motueka Catchment Collective**. It

was held at Ollie's property on the West Bank Road where considerable thought and effort has gone into planting natives on a hilly 8ha site.



Ollie describing the plantings and issues faced



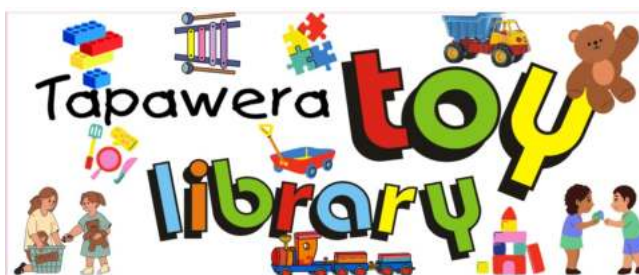
Roger speaking about the issues for optimal planting of natives around wetland areas

With over 40 attendees, there were a lot of vehicles there too! With the Trust's vehicle lent to Tapawera, we are looking to encourage ridesharing to such events. Most of the people attending that event, where we were learning about which native plants to select, planting strategies, maintenance requirements etc, would have a keen interest in environmental protection. It's good to complement that intention by seeing how we can reduce our fossil fuel emissions in organising such events. Using the little hybrid bus down the valley picking up people enroute, we used almost no fuel and had some really good conversations and

connections. And people saved using their own cars, money and fuel. A win for all of us.

We will be starting a pilot programme of using the little bus vehicle for both a regular weekly return trip into Richmond on Tuesdays for \$12 and another one to Motueka, probably on a Friday. We also encourage community groups to nominate someone who is willing to register as a volunteer driver and they can then hire it for a reasonable price and encourage trip sharing outside the regular route trip days. It comfortably seats 5 passengers and the driver. Details about it are at <https://tapaweracommunity.nz/services>.

JL, 21/2/2024



!! Volunteers still needed!!

Kia Ora Tapawera and our Tamariki Happy new year! Hopefully you all are having an amazing start to 2024.

For this year we are on the lookout for more volunteers to help with the opening of our toy library. Are you looking to help around our community or you're happy to help just for an hour on Monday mornings and want to join our kind, creative and easy going team, now is the time to apply as we are really needing you!! So contact Jan or head to our Facebook page and message us for more information.

This year we have a some amazing new toys and more available for our children to build their creativity and to explore such as board games for the family, outdoor activities, water slide, water table, Duplo, Lego, toys for infants and toddlers, heaps of toys for kids to build their imagination. So come down and see what we have available. The bouncy castle is now back up and running to hire for parties or any other events you may have!

Hours have now changed to Monday mornings!!! 10:30-11:30am or contact Jan:0273915424. Ee also can open at any other time just for you, just get in contact with us via messenger on Facebook or contact Jan :).

Book Discussion Group

Meet: 4th Thursday in month, 10am
 Contact: Paula Davis ph. 5224341

Federated Farmers

Contact: Harry Matthews - Field Rep -
 0275078901

Golden Bush Garden Club

Meet: 2nd Thursday of month
 Contact: President, Irene Griffith
 0212525098, or Shirley Percy 5224924

Golf

Meet: every Sunday, Ladies 9 hole
 every Tuesday
 Contact: Gary Oldham ph. 0278080578

Historical Society

Contact: Barbara Carleton ph. 5224317

Informer

PO Box 15 Tapawera
 Email tapawerainformergmail.com

Justice of The Peace

Peter Phillips ph. 5224313
 John Ellis ph. 021 522429
 Brent Hodkinson ph. 5224381
 Francine Currie ph. 5224245
 Susan Fenemor ph. 0275224009 (text
 during school hours)

MENZSHED

Contact: John Wilmshurst ph. 5224616

Neighbourhood Support

Contact: Gavin Scoble
 ph. 5224585 or 027 7576665
 Email gavin@neighbourhoodsupport.nz

Netball

Contact: Susan Fenemor ph.
 0275224009 (text during school hours)

Ramblers

Meet: each month
 Contact: Shirley Percy ph. 5224924

Shedwood Hall bookings

Contact: Tania Higgins ph. 5224587

St Andrews Church Stanley Brook

Services every Sunday. Cup of tea
 afterwards.
 Contact: Lee Winter ph. 5224160

St John – Tapawera

For emergencies Dial 111,
 Email info@stjohn.org.nz

Tapawera & Dist. Community Church

Service: St. Peter's Tapawera. 2nd
 Sunday of each month at 3pm
 Contact: Church Office 03 541 8883
 Vicar: Rev. Don Moses ph. 541 8883

Tapawera & Dist. Community Council

Meetings: 3rd Tuesday of month,
 7pm Tapawera Community Centre,
 email: TapaweraTDCC@gmail.com

Tapawera Community Centre

Email: TapaweraTDCC@gmail.com

Tapawera Connect

Contact: Phoebe Quinlivan ph. 021 211
 6730 or 522 4929, email:
tapaweraconnect@gmail.com

Tapawera Creative Fibre

Meet: every Wednesdays, Memorial Hall
 Contact: Dallas Robinson ph. 5224984

Tapawera Food Bank

Contact: Suzzi Lankshear ph.
 0277491063

Tapawera Jujutsu Club

Contact: Tony Hammersley ph. 5224609

Tapawera Music/Country Music Club

Meet: Alternate Sundays, Tapawera
 Hotel 7:30pm
 Contact: Elaine Douglas ph. 5418612

Tapawera Op Shop

Contact: Nicola Allan ph. 0212506232

Tapawera Playcentre

Meet: Mon & Thur, 10am -12:30pm
 Memorial Hall ph. 5224456

Tapawera Rugby Football Club

Bookings: ph. Judy Benjamin 5224445

Tapawera Sport & Recreation Society

Contact: Judy Benjamin ph. 5224445

Tapawera Volunteer Fire Brigade

Contact: Dean Millar Chief ph.
 0279651399; Ted Oakly Deputy Chief
 ph. 0210704033

TAS / Community Library

Mon-Fri 10:30am-1:30pm. Contact:
 Lareen Bonnington ph. 5224149
 Library ph. 5224337/ext. 213

TESSI

Contact: Bruce Whyte ph. 5224550

Toy Library

Open Monday or via arrangement:10:30
 -11:30am contact Jan Barker:
 0273915424 or 5524984

Visual Arts Society Tapawera

Contact: Dallas Robinson ph. 5224984

Wakefield Police

Constable Jamie White –
jamie.white2@police.govt.nz
 Constable Matthew Berquist –
matthew.berquist@police.govt.nz
 Non Urgent (CRL) – Call 105
 Happening Now – Call 111

**What's on
March**

- 8 Women's Day Paint & Sip,
Shedwood Hall, 6pm-9pm
- 9 Tapawera Netball Club
registration day, school netball
courts, 9:30am
- 12 Tapawera Talking Café, 10-
11:30am, Tapawera
Community Centre
- 12 Digi Drop-in Session,
Community Centre, 11am-1pm
- 13 Community Hub Information
Evening, Community Centre,
6pm-7:30pm
- 14 Garden Club, 3240 Kohatu-
Kawatiri Highway, Glenhope,
11am
- 18 Cancer Society Survivors and
Thrivers Support Group, 1pm-
2:30pm, Tapawera Fire Station
- 19 TDCC monthly meeting,
Community Centre, 7pm
- 20 Articles for Informer close 5pm
- 26 Tea and Talk, Memorial Hall
10:00am - 11:30am

**GP & Nurse at
Tapawera Clinic**

(during school term time):

GP clinics – Mondays
9am – 12 midday

Nurse clinic – alternate
Tuesday mornings - phone
541 8911 for dates

* *Do you have an event you
would like listed in What's On?*

* *Or a community group or
organisation you would like
included in the directory?*

If so, please email
tapawerainformergmail.com