

Informer

Informer, PO Box 15, Tapawera
email tapawerainformergmail.com



**Hato Hone
St John**

Hato Hone St John is touting the benefits of volunteering as the organisation appeals for new recruits in Tapawera.

Having worked in various voluntary roles since 1990, Tim Creagh, Hato Hone St John Group Operations Manager for Nelson and Tasman Bays, has seen the “immense contribution volunteers make in communities across New Zealand”.

“Many of our volunteers work in frontline emergency response roles, providing first aid and, sometimes, lifesaving help. They play a crucial role when patients are at their most vulnerable, and when every second counts.”

Mr Creagh says the organisation is looking to recruit more “good and keen team members who want to make a positive impact in the community”.

Hato Hone St John will provide all the necessary training, which includes courses on driving and resource management, and volunteers also complete a New Zealand Certificate in Emergency Care (First Responder). It typically takes between six and nine months for a new volunteer to meet all training requirements. There are also opportunities for advanced training if you wish to progress to a higher authority to practice.

Aside from responding to emergencies, Mr Creagh says team members occasionally provide support at community events such as festivals and concerts.

“Our volunteers play a significant role in helping build resilient communities and we are truly grateful for their selfless commitment to helping others. We are always looking for new team members, particularly young, healthy and physically fit people who are practical, calm under pressure and can work well in a team.”

Mr Creagh, who has 35 years’ experience in the ambulance sector, says volunteers in Tapawera are available on-call. “We know how busy modern life can be, so we like to be as flexible as we can when it comes to the hours and times our volunteers are able to work.”

For more information about becoming a volunteer, including the application process, contact Tim Creagh on 027 255 3981, or visit: join.stjohn.org.nz/volunteer.

New Advertising Rates for the Informer

After many many years of advertising rates for the Informer remaining unchanged, the TDCC has agreed to increase rates to cover increasing printing costs, and to give a 20% discount for paying annually. The new rates for 2024 are as follows:

	Per month paid monthly	Per year for 11 issues
1/4 page	\$32.50	\$286
1/2 page	\$45	\$396
Full page	\$65	\$572



**Hato Hone
St John**

Support your community and become an Ambulance Volunteer

Make a difference and contribute to your community by joining us on our mission to improve the health and wellbeing of all New Zealanders.

Work with a dedicated team, learn life skills, and meet new people.

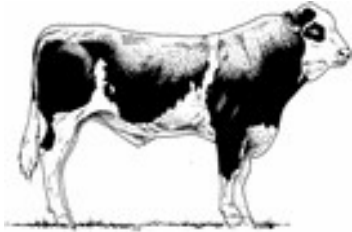
For more information contact Tim
Hato Hone St John Group Operations Manager
Ph 027 255 3981



Gillespie—1

MAF approved

Home kill butchery



03 547 7746

Butcher / journeyman
Specializing in quality small goods
Factory: 111 Bolt Rd, Nelson

voltz

ELECTRICAL LTD

Julian McGaveston
Registered Electrician

For all your domestic, commercial
and rural electrical needs.

T: (03) 522 4488

M: 021 566 645

F: (03) 522 4698

E: voltzelectrical@silkweb.net.nz

2227 Wakefield Kohatu Hwy. RD2. Wakefield 7096

RURAL POST, RD 2 Wakefield

Contact Nick & Jackie Costley for all your RD 2
Wakefield postal needs.

Including prepaid envelopes, stamps, courier
items and local freight from Wakefield, Dovedale
and Tapawera. Prescriptions from Wakefield.

Phone 0275418581

Mark & Tania Gill
T/A MTJ Transport
RD2, Nelson

NZ Post Rural Contractors
Servicing

Motupiko-Korere-Kikiwa-Tophouse-St Arnaud-Glenhope

For all your Postage, Milk & Courier Freight
Operating 3 Days Weekly
(Monday-Wednesday-Friday)
Departing Nelson 8.00am
Phone 546 6295

Material & adverts for Informer

All material is to be sent to either:

Informer, PO Box 15, Tapawera, 7055
or email- tapawerainformergmail.com

To be received by 5pm
20th of the Month

If emailing a word document please send in Word as an
attachment.

If sending an advert please save as a jpeg before sending.

Please check your emails to see your article/advert has
been received as sometimes there needs to be alterations.

Advertising rates for Informer

Standard ad	Paid monthly	Paid annually
1/4 page advert	\$32.50	\$286
1/2 page advert	\$45	\$396
Full page advert	\$65	\$572

Adverts that require editing may cost extra

The Informer is produced and published by the Tapawera and Districts
Community Council, PO Box 15, Tapawera, 7055;
email: tapawerainformergmail.com
Circulation 635
Editor: Gill Hammersley
The Editor and Publisher try to ensure information published is truthful

and accurate, but do not accept any responsibility for errors or
omissions, or for any consequences of readers' relying on the
information published. Opinions expressed by contributors may or may
not be endorsed by the Editor or Publisher.
All material submitted, whether editorial or advertising, is accepted at
the discretion of the Editor and the Publisher.

Health Improvement Practitioner (HIP)



Nicole Willcox has recently joined us as our Health Improvement Practitioner (HIP). She has a background in Occupational Therapy and has a passion for helping people live the best life they can. The role of the HIP is to provide brief interventions for improving overall health outcomes for people of all ages (including children) who are experiencing challenges impacting on their health and wellbeing.

These challenges can include but are not limited to: sleep, anxiety, low mood, stress, grief and loss, anger, managing long term conditions, pain, nutrition, exercise, addiction, and relationships.

This is a FREE service available for enrolled patients. You can book through reception in advance or call for an on-the-day appointment. I work Monday, Wednesday and Friday. No matter the challenge, big or small, come and have a chat to the HIP today!

SunSmart

The sun has been shining and we have been enjoying the beautiful Nelson weather. Remember to keep yourself safe by following the SunSmart steps:

Steps to being SunSmart:

Slip- into the shade where possible.

Slip- on some protective clothing, ie. Shirt with collar and long sleeves and trousers or long –legged shorts.

Slop- on sunscreen that has an SPF of at least 30 and apply 20minutes prior to sun exposure.

Slap- on a hat that protects your face, head, neck and ears.

Wrap- on some close fitting sunglasses.

Covid 19 Vaccinations

There is a lot of Covid in the community now and one of the best protections is to keep your vaccinations up to date. We can give covid vaccinations at the Health Centre. Our nurses will give the vaccine and of course it is FREE. Give us a call to see if you qualify and arrange an appointment with one of our nurses.



Tapawera Menzshed was asked to provide road signs to replace old and missing signs on the Rainbow Road to Hanmer.

This was something new for our shed and took the super skills of our very own David Carson to fashion a stencil for the NZED emblem on the right end of the signs.

The New Zealand Electricity Department put the Rainbow Road in during the 1950s to access and build the transmission lines from the southern lakes to Nelson.

Our Menzshed is pleased to be part of this project to maintain the NZED's historic link to this more remote area of the province.

Thanks must go to others who helped see this project to completion ie Wayne Stratford (timber machining), Rainbow Station (supplying and driving posts), and Don McFadzien (attaching signs and keeping us all on track!).

The first batch of signs ready for delivery:



COME TO A TALKING CAFÉ

Connect with your community



Talking Cafés are an opportunity to meet people, make new connections and learn more about your community.

Pop in for a quick cuppa, or stay for a longer conversation with friendly people. All welcome, no bookings required.

Upcoming Tapawera Talking Cafés
Purpose HQ Cafe (outside tables) or
Tapawera Community Centre if inclement weather.
Tuesday 13th February, 10-11.30 am
Tuesday 12th March, 10-11.30 am

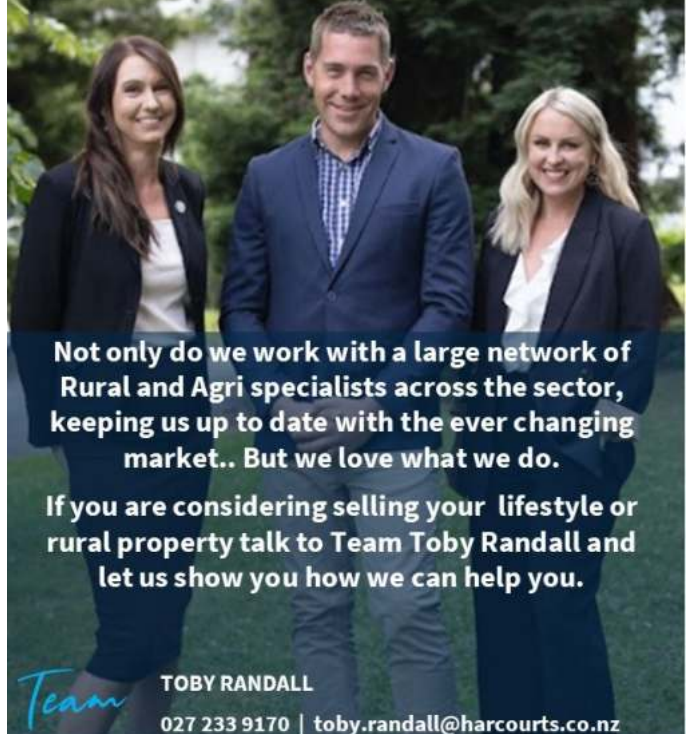
For more details:
wellby.org.nz
or phone (03) 546 7681

wellby

Harcourts Rural

PLATINUM BLUE LIMITED LICENSED AGENT REAA 2008

Your Local Rural and Lifestyle Experts



Not only do we work with a large network of Rural and Agri specialists across the sector, keeping us up to date with the ever changing market.. But we love what we do.

If you are considering selling your lifestyle or rural property talk to Team Toby Randall and let us show you how we can help you.

Team

TOBY RANDALL

027 233 9170 | toby.randall@harcourts.co.nz

The Lady Tradie

Has your husband got a **round to it**



Spring has sprung

and the grass has riz !

Do you wonder where a handyman is ?

Can't get one ?

Then call " Jen the Lady Tradie "

for all your outside spring clean-up jobs

* Gutters full of leaves;

* Lawns that are starting to bolt;

* Waterblasting those slippery paths

and all that spring growth that just might get away on you.

* **Local Person** * **Referees Available** *

Consideration & discount shown towards Senior Citizens

FREE QUOTES

Contact Jennifer

Phone or text: 027 544 2663

After hours/leave a message: 03 522 4453

Email enquiries to: jentheladytradie@gmail.com

Tasman Bay Chiropractic 64 Oxford Street Richmond



Keeping you in the game since 2002

Referrals, families and
all new clients welcome

Visit our website or call for more information

tasmanbaychiropractic.co.nz

03 544 4554

Monday-Saturday

Find us on 





Senior's Snippets with Janine Leeden, 0277525975

Welcome to 2024! I hope everyone survived Christmas and the Festive Season well and without too many family dramas. Sadly it can be a very lonely, painful time for people as they miss loved ones that are no longer around or separated by distance or illness (COVID has been rampant again in our region over the summer. We still need to be aware of who we are sharing this virus with, as not all of us are robust). I would like to think that we have been building connections so that we are aware of others around our community who might just need a call, a simple "hello" or even for something more. Please reach out!

I enjoyed my first opportunity of working in the Warnes' lovely raspberry gardens part-time, for a few weeks. What a challenge (on the hot days) but a delight. It was great to see so many families, mums and children out there working together, having fun banter. I likened the picking to 'foraging' for lovely red globes (I know they're not spherical but better than saying globules) of summer delight! What a privilege to be able to help out in our local community harvesting such a delightful, precious crop. We really are blessed to be living where we are.

TRANSPORT: We need volunteer drivers! I'm excited to announce that we have managed to secure the NTCTT (Nelson Tasman Community Transport Trust) **vehicle** for a three month trial, which will hopefully lead to it becoming a longer-term service for us to utilise for Tapawera and the valleys. Details are still being worked out and we will be able to make use of it **as we get more volunteer drivers** to spread the load. So, if **you have a clean driving history (are fully licenced)** and happy for a Police check, and would appreciate driving the NTCTT vehicle to transport a few others into Richmond for several hours, then please give me a call so we can get the paperwork sorted.

Please keep an eye on The Tapawera Community webpage (<https://tapaweracommunity.nz/>), future 'Informers' or talk to others to find out more, or call me. Limited transport options has been one of the most important issues facing Tapawera for some time and this is our chance to access and make use of this vehicle, to make it more affordable / possible for many who otherwise couldn't access either Richmond or Motueka. (We have a driver prepared to take the vehicle to Motueka once a week for a full day). Again, details are still to be confirmed. **This is great news!**

To coincide when people are in the Village attending the **Wellby Talking Cafe on Tuesday 13th February 2024**, enjoying the sunshine outside the Purpose HQ Cafe, I have

organised for Helen McCubbin from Tasman District Library to offer their **Digi Drop-in session at the Community Centre from 11am-1pm**. For the next few months she has information that might make internet access more affordable for those struggling financially using **Skinny Jump**. If you currently can't afford and don't have internet connection at home, please call in to find out if you qualify and get set up on the day! **(This offer is NOT just for Seniors!)**

We continue to meet weekly at St Peter's Anglican Church for Sit and Be Fit, from 10-11am for some gentle exercise, not so gentle laughter (the participants are pretty rough on the instructor) and a cuppa, all for \$3. Please feel free to come along and join in for some strength and balance exercises as well as some important socializing.

Our monthly **Tea and Talk**, for over 65s, resumed on the 30th January and will be on **Tuesday 27th February, 10-11.30 am at the Memorial Hall**. Please join us for some relaxed and fun socialising. \$3 gets you morning tea and some great connections.



Local Midwifery Practice

Kahurangi midwives is a group of midwives who have come together to care for families in the Tasman district. Our team of 5 midwives is dedicated to providing holistic and whānau centred

midwifery care during all stages of pregnancy, labour, birth, and postnatal period.

Lisa Butcher and Annabel Kennedy are covering the area from Brightwater to St Arnaud, Murchison to Tapawera and surrounds. We are passionate about providing maternity care to rural women and families in a manner that is flexible and empowering. We aim to provide continuity of care, from pregnancy, birth and postpartum.

We understand how challenging it can be to have to travel to town for maternity care, so we will work to reduce barriers to accessing maternity care. Lisa and Annabel are pleased to be able to offer a dedicated clinic space in Tapawera, located at the community centre (op shop building). We will run antenatal appointments there and stock free pregnancy tests, contraception and can offer pre-conception advice. We will also utilise clinics in other rural locations as needed, as well as home visits. We attend births at home, Motueka primary unit and Nelson Hospital.

If you require a midwife, please don't hesitate to get in touch or find out more about us on

www.findyourmidwife.co.nz

Lisa Butcher
027 334 3031

lisa.midwife@outlook.co.nz

Annabel Kennedy
021 133 8649

annabelmidwife@gmail.com



Welcome to 2024

**Rural Mums meet every Friday
10am - 12pm at Tapawera Memorial Hall**



Open, supportive and welcoming space for all mums, dads, caregivers, grandparents, and your little ones with regular workshops, speakers and activities.

Rural Mums Tapawera is proud to be associated with



For more details visit our Facebook page: Rural Mums Tapawera
or Contact Abby on 0221654460



Tapawera Jujutsu Club

The Tapawera jujutsu martial arts youth class finished last year with a successful grading as the students progressed up to their next belt levels.



The class took a break over the holiday period and starts again on Monday 5th February in the school hall from 5.00pm to 6.30pm.

The adult class is from 6.30pm to 8.00pm on Mondays. Adults of all ages are welcome to join our friendly group, no previous experience necessary. Cost is only \$2 per class.

Please contact Tony Hammersley Tel: 5224609 or email tonyandgill112@gmail.com for further information



Rangitahi Explorers

Kia Ora Tapawera Community!

I am very excited to introduce myself as the new Youth Coordinator! I'm Temika, the oldest of 6 and I have been living in the area (at Quinney's Bush Camp) for just over 3 years now! I have a deep passion for youth development, community engagement & having a positive impact on the lives of those I interact with. Creating a supportive, inclusive and enjoyable environment where our youth can thrive and grow is a priority for me. I am really looking forward to working with our youth in the community alongside the current coordinator Karla and volunteer helper Geinty.



Golden Bush Garden Club



The December Christmas meeting was held at Judy Hodgkinson's garden at Tadmor. A great lunch was enjoyed by all and eight hamper basket raffles were won. We had plenty of time to look around Judy's and Sue and Mark Lucas's delightful, colourful cottage gardens. There is always something new to see in both gardens. Thank you to them for letting us share and enjoy their gardens at Christmas time.

On the 11th of January the club was fortunate to have a tour of the nursery and gardens at Creative Earth, Motueka Valley. Joel grows many unusual perennials, herbs and vegetables and most of us took full advantage, and cars departed laden and with wallets lighter.

Next meeting is Thursday 8th February 11am at Linda Milson's, Thuen Farm, 2717 Motueka Valley Highway. There's plenty of parking in the paddock at the top of the drive. There will be an auction and raffle.

With such a long spell of dry weather the rain has been so welcome, one can almost hear the plants breathing a sigh of relief, especially the hydrangeas, which seem to be forever thirsty.

Till next time, Happy Gardening.

Shirley



Tapawera Netball Club

Senior and secondary school team trials

Feb 11th 2024

9.30am

TAS

Tapawera Netball Club AGM

Feb 13th 2024

7.30pm

TAS

Providing gentle guidance when you need it most.



Simplicity Funerals

Simply respectful. Simply affordable.



Anna Loach
Manager / Funeral Director
Dip FD Reg. FDANZ

**NELSON & TASMAN WIDE,
WE'RE PART OF YOUR COMMUNITY**

Phone 03 929 5145 | 276b Queen Street, Richmond
nelson.simplicity.co.nz



Our Local Biodiversity

It's been an exciting summer so far.

Last term, Tapawera Area School Years 7 & 8 and Tapawera

Kindergarten got to experience the national Whitebait Connection programme where the students got out to look at the health of our local freshwater streams and river. We found the field sites we visited showed a good abundance of freshwater macroinvertebrates which, on the whole, is pretty good news. This is because these bugs can be a sign of good health in a waterway, as well as providing a great source of food for our native fish and river birds. Whilst it would not be wise to rest on our laurels (many water quality trends for the Motueka River are declining), they do show how lucky we are to be living in an area like this!

Some of the Year 9 Art students also got involved, creating signs to let people know that there are important bird species nesting on the Motueka riverbed in the Tapawera area. The same students joined me and Matt from TDC to put up an education board by the entrance of the access path by the Tapawera bridge, which tells us a bit about why these birds are so special. The mahi done by these students and others is currently on display at the Tapawera Community Centre, so remember to have a look when you're next in the village.

A quick reminder that the River Nesting Bird project started in 2021 with three key focuses. First is conservation to protect the birds and other wildlife around us. Second is education to inform people about why our piece of river is special. And third is recreation to find ways for us locals and tourists alike to make the most of our local waterways. It is understandable that people may be concerned they will have to give up something for the sake of the birds, but by following some simple guidelines there shouldn't really be a need to do that. There are enough of us that care about our environment who still want to enjoy the river, including by taking our dogs for a swim etc. And by having good conversations to find good solutions, we will hopefully be able to achieve all our goals!

Thank you to everyone who has supported the project so far. There are many! Thank you especially to Tapawera Area School, Tapawera Kindergarten, Nicola Allen at Tapawera Connect, Tasman Bay Guardians (Whitebait Connection), TDCC, and TDC. To the Motueka Catchment Collective (MCC) Biodiversity and Restoration group for funding the cool new 'Tapawera with Tern' logo and Ana at the Tapawera-based SugarCube Studios for doing our beautiful nationally endangered tarapirohe/black fronted tern justice.

If you are interested in supporting the river bird project or finding out more about community based freshwater

monitoring, please get in touch with Kate at kjradloff@gmail.com or kate.r@mountainstosea.org.nz.

Follow the National River Care Code

Riverbed birds nest between August and February and need your special consideration during this period. So please...

- Keep clear of nests & watch out for eggs & chicks. They are hard to see & very fragile
- Be aware of birds you have disturbed. Move on within five minutes so that birds can return to their eggs and chicks, or they will die
- Avoid driving any vehicle on riverbeds. Vehicles unsettle birds and run over eggs and chicks so park on the bank and walk to your destination
- Keep dogs on a lead, or strictly to heel from August through to February. Dogs running loose on riverbeds can scare away birds and destroy eggs and chicks
- Boats disturb birds and wash away nests. The speed limit for boats is 5 knots within 200 metres of the bank. The NZ Jetboat Association can supply more information about jetboating in rivers.



WADSWORTH MOTORS LTD.

- Coach Charters & Tours
- Mini Bus Hire.
- School Transport
- Professional friendly drivers
- Members of the Bus & Coach Association

Over 100
Years of
Service

wadsworthmotors@extra.co.nz
100 Main Rd, Tapawera
www.wadsworthmotors.co.nz

027 4873167



"...for all creatures great & small..."

**Regular Tapawera visits
discounted mileage
T&Cs apply**

Ph 544 1200

info@tcvet.co.nz * www.tcvet.co.nz

**25 Edward Street, Wakefield
35 McGlashen Avenue, Richmond**



24 hour emergency vet

TAPAWERA ELECTRICAL

Tony Stephens

Registered Electrician

Ph/fax 5224257
0276249489

All electrical needs
Domestic & Rural

Wiring, faults, some home appliance repairs
New heat pump installations



Free Quotes
Competitively priced



Library News

We weren't able to open during the school holidays but the school started on 31st Jan and here we are ready for a new term.

We do hope one of your resolutions this year is to come in and see your local library. You notice I'm not saying your resolution should be to join the library because I'm confident that once you come in and see what we have here you won't need any persuasion to become a member. Remember our catalogue is available on nz.accessit.online/TPW00 (last two digits are zeros)

We don't charge for membership and even though the actual opening hours are shorter now - see below - members can obtain a key from the office and use the library during normal school hours, we have so many books plus comfy sofas and contrary to what you might believe of a school library, it's not a noisy place although lunchtimes between 12.45 until 1.30 are the best times to avoid if you want total silence.

We are hoping to dream up some schemes this year to entice the most reluctant of you to come and see for yourself. If anyone has any ideas (an open morning with coffee and cake maybe?) we'd love to hear them.

Our chess club will be running on Monday mornings as usual and any adult wanting to come and play against willing partners would be very welcome, just call me on 0272625289 if you are interested.

If you are new to the community, you will find us behind the tennis courts at the school.

Our hours are Monday –Friday 10.30am-1.30pm

Ph 5224337 ex213. Email library@tapawera.school.nz

Website as above.

Happy Reading folks

Laree for the library team

Girls Friday

We are still meeting on the last Friday of the month but as the Tapawera Hotel is still closed we are meeting at Kohatu Flat Rock Cafe, at 11.15am.

We are a very friendly social group and are open to anyone in the district, a good opportunity for new people in the area to get to know the locals, or others that have lived here for ages to have a catchup with old acquaintances.

An Oasis on a Long Hot Dusty Road!

There is now a rest stop for all cyclists on the Great Taste Trail, and anyone who cares to drive up the Baton Valley. We are 500 metres from the new swing bridge and we are 13.5km from the Woodstock/Baton Bridge, at 1360 Baton Valley Road. We are open from 9.30am to 5pm daily.



Come to Lublow's Leap Shop, buy an Appleby Ice Cream, or a cold drink or make yourself a tea or coffee, relax, rest, jump on the wi-fi or read about the local history.

Any group enquiries contact Fiona on 03 522 4164 or Fiona@batonvalley.co.nz.



HANDYMAN

- * General property maintenance
- * Clean out/tidy up
- * Water blasting
- * Gardening
- * Chain sawing
- * Repairs
- * Demolition
- * Any farm work

Fair hourly rate. Honest and hard working.

Local references available.

Please enquire to Jeremy Ellis (03) 522 4460



All Accounts Matter LTD

For all your accounting and tax needs!

If you are looking for a new Accountant, now is the perfect time! I would love to find out about your business and have a no obligation chat about how I can help you. So don't wait, call me now!

Sonia Emerson Chartered Accountant

GST | Tax Returns | Payroll | Bookkeeping | Cashflow Forecasting
Management Reporting | Rental Statements | Farm Accounts



ACCOUNTING SOFTWARE

myob

2020/2021
Certified
Consultant



M: 021 221 1009 | P: 03 541 9005 | sonia@allaccounts.co.nz
367 Wakefield-Kohatu Highway, RD1, Wakefield 7095

www.allaccounts.co.nz

Nelson Tasman
KINDERGARTENS
INGA KOHUNGATUNGUA MAI WHAKATU KI AORERE
For the best possible start

Tapawera Kindergarten

We are a recently established kindergarten located on Tapawera Area School grounds offering:

- ◆ A curriculum catering to individual child's needs that is community focused, respectful and inclusive
- ◆ 100% qualified and registered teachers
- ◆ Open all year round
- ◆ A smooth transition to school
- ◆ Flexible hours
- ◆ Up to 30 hours of free early childhood education for 2-5 year olds

Tapawera Kindergarten is welcoming new enrolments now.

Stop by and have a chat with our teachers between 9:30am and 2:30pm or call/email for more information.

Open 8.45am—3pm, Monday—Friday
021 0878 8070

tapawerakindergarten@ntk.org.nz

We are located at the end of the Primary block, near the back field.



Up to 30 hours
free



Purpose HQ Gym and Cafe has been enjoying this amazing weather and meeting a whole heap of new customers as they travel through our awesome village this holiday season. We wish everyone a safe and prosperous 2024!!

Gym

We are just waiting on final quotes to be done for the mahi needed for our back room renovations and may have some exciting news to share next month....so keep an eye out!!

Cafe

Purpose HQ Cafe has opened our doors to our Tapawera Kai Support team. We realised just before Christmas that access and comms have been a barrier for our Kai Support Team. So now Tapawera Kai Support will have its home at the Cafe. There is a bin at the cafe where any donations can be dropped off. But it is not our staff that organises the food packs so please head to the Tapawera Kai Support Facebook page, add as a friend and then send a private message to the team with any questions or requests for support.

<https://www.facebook.com/tapawera.kai.support>



SEED NZ

Māra Wera - Community Garden

With the departure of our much loved Whaea Denise who was our champion within the kura to support this project we are now looking more than ever for a team of volunteers to support Lee

Leary (Nan) with maintaining and continuing developing the work program for our Māra Wera - Community Garden.

The goal is that this garden will support our Tapawera Kai Support team in encouraging those that come along to volunteer how they can grow their own kai at home. Please contact us if you have any questions.

Te Ahi Tautoko-o Tapawera Firewood Bank

TATT is a new Firewood Bank initiative for Tapawera. We have submitted all required documentation to MSD to become a preferred firewood supplier. So please get in touch as we will work with you to access this service.

We have firewood available now ready to burn this coming winter and we want to ensure we have firewood available for our community from now onwards. We will be working on some initiatives to support our community throughout the year so keep an eye out for these opportunities.

We'd love to hear from you. Let's ensure everyone in Tapawera has access to keeping warm this winter.

For orders please Facebook PM Karen Jones your order and phone number or text on 027 2222479.

Delivery Free Locally Tapawera Area

Pine Only - 3.2m³ Load

Split \$270 (\$84.38/m³)

Rounds \$220 (\$68.75/m³)



Kaiako Position Tapawera Kindergarten Full Time Fixed Term. February - July 2024

We are seeking an energetic, passionate, and caring kaiako to join our great team at Tapawera Kindergarten. The ideal candidate will be self-motivated, a team player, have strong initiative, and possess passion for teaching young Tamariki.

We have a commitment to strengthening our knowledge and practice of Te Ao Māori through enacting the principles of Ka Hikitia and Tau Mai Te Reo and incorporating the language and culture of all our whānau. If you are a strong practitioner and the above excites you, then we want to hear from you!

The Kindergarten is located on Tapawera Area School grounds with a roll of 30 children. We provide a rich early childhood curriculum for tamariki aged 2 years to 6 years. Our mixed age programme holds the fundamental principles of respect, resilience, having fun, challenging oneself and kaitiakitanga.

Tapawera Kindergarten is part of Nelson Tasman Kindergartens, the leading provider of early childhood education in our region.

Why should you work at Nelson Tasman Kindergartens?

- We have a network of 22 high quality and well-resourced Kindergartens across the region, each with their own unique character.
- Staff at Nelson Tasman Kindergartens benefit from the great ideas and the combined wealth of experience of the 140 plus teachers that work for us.
- Teaching staff are supported by a team of Senior Education Advisors, the management team, board, and association office staff, as well as administrators in every Kindergarten.
- We are a not-for-profit charity which ensures all funds go towards our children's education.
- We are an Enviroschools partner and offer our families free parenting support.

If you want to work for a great team, that puts the learning of children first, then apply today. Applications close 8/2/24 5pm.

Administrator Position Tapawera Kindergarten Part Time Permanent

We are looking for a positive, energetic, and enthusiastic Office Administrator to work with our dedicated kaiako at Tapawera Kindergarten

The position is for 15 hours per week and there may be times when the position will require additional teacher aide hours above this. There may be some flexibility in the hours worked, but we require them to be spread over the week, Monday - Friday. Applicants must be available to work during the school holidays.

The successful applicant will have previous office administrative experience, a high level of computer skills, be an excellent communicator, show initiative, be creative, manage their time effectively and independently. Additionally, the ideal candidate will have a can-do attitude, enjoy working with tamariki, work well with the kaiako team, and fit in with our philosophy.

We have a commitment to strengthening our knowledge and practice of Te Ao Māori through enacting the principles of Ka Hikitia and Tau Mai Te Reo and incorporating the language and culture of all our whānau. If you are a strong practitioner and the above excites you, then we want to hear from you!

Tapawera Kindergarten is part of Nelson Tasman Kindergartens, the leading provider of early childhood education in our region.

Why should you work at Nelson Tasman Kindergartens?

- We have a network of 22 high quality and well-resourced Kindergartens across the region, each with their own unique character.
- Staff at Nelson Tasman Kindergartens benefit from the great ideas and the combined wealth of experience of the 140 plus teachers that work for us.
- Teaching staff are supported by a team of Senior Education Advisors, the management team, board, and association office staff, as well as administrators in every Kindergarten.
- We are a not-for-profit charity which ensures all funds go towards our children's education.
- We are an Enviroschools partner and offer our families free parenting support.

If you want to work for a great team, that puts the learning of children first, then apply today. Applications close 8/2/24 5pm.

Book Discussion Group

Meet: 4th Thursday in month, 10am
 Contact: Paula Davis ph. 5224341

Federated Farmers

Contact: Harry Matthews - Field Rep -
 0275078901

Golden Bush Garden Club

Meet: 2nd Thursday of month
 Contact: President, Irene Griffith
 0212525098, or Shirley Percy 5224924

Golf

Meet: every Sunday, Ladies 9 hole
 every Tuesday
 Contact: Gary Oldham ph. 0278080578

Historical Society

Contact: Barbara Carleton ph. 5224317

Informer

PO Box 15 Tapawera
 Email tapawerainformer@gmail.com

Justice of The Peace

Peter Phillips ph. 5224313
 John Ellis ph. 021 522429
 Brent Hodgkinson ph. 5224381
 Francine Currie ph. 5224245
 Susan Fenemor ph. 0275224009 (text
 during school hours)

MENZSHED

Contact: John Wilmshurst ph. 5224616

Neighbourhood Support

Contact: Gavin Scoble
 ph. 5224585 or 027 7576665
 Email gavin@neighbourhoodsupport.nz

Netball

Contact: Susan Fenemor ph.
 0275224009 (text during school hours)

Ramblers

Meet: each month
 Contact: Shirley Percy ph. 5224924

Shedwood Hall bookings

Contact: Tania Higgins ph. 5224587

St Andrews Church Stanley Brook

Services every Sunday. Cup of tea
 afterwards.
 Contact: Lee Winter ph. 5224160

St John – Tapawera

For emergencies Dial 111,
 Email info@stjohn.org.nz

Tapawera & Dist. Community Church

Service: St. Peter's Tapawera. 2nd
 Sunday of each month at 3pm
 Contact: Church Office 03 541 8883
 Vicar: Rev. Don Moses ph. 541 8883

Tapawera & Dist. Community Council

Meetings: 3rd Tuesday of month,
 7:30pm Tapawera Community Centre

Tapawera Community Centre

Lisa Carleton ph.0274461017

Tapawera Connect

Contact: Phoebe Quinlivan ph. 021 211
 6730 or 522 4929, email:
tapaweraconnect@gmail.com

Tapawera Creative Fibre

Meet: every Wednesdays, Memorial Hall
 Contact: Dallas Robinson ph. 5224984

Tapawera Food Bank

Contact: Suzzi Lankshear ph.
 0277491063

Tapawera Jujutsu Club

Contact: Tony Hammersley ph. 5224609

Tapawera Music/Country Music Club

Meet: Alternate Sundays, Tapawera
 Hotel 7:30pm
 Contact: Elaine Douglas ph. 5418612

Tapawera Op Shop

Contact: Lisa Carleton ph.0274461017

Tapawera Playcentre

Meet: Mon & Thur, 10am -12:30pm
 Memorial Hall ph. 5224456

Tapawera Rugby Football Club

Bookings: ph. Judy Benjamin 5224445

Tapawera Sport & Recreation Society

Contact: Judy Benjamin ph. 5224445

Tapawera Volunteer Fire Brigade

Contact: Dean Millar Chief ph.
 0279651399; Ted Oakly Deputy Chief
 ph. 0210704033

TAS / Community Library

Mon-Fri 10:30am-1:30pm. Contact:
 Lareen Bonnington ph. 5224149
 Library ph. 5224337/ext. 213

TESSI

Contact: Bruce Whyte ph. 5224550

Toy Library

Open Thursday 10:30am-11:30am
 Contact: Jan ph. 5224102

Visual Arts Society Tapawera

Contact: Dallas Robinson ph. 5224984

Wakefield Police

Constable Jamie White –
jamie.white2@police.govt.nz
 Constable Matthew Berquist –
matthew.berquist@police.govt.nz
 Non Urgent (CRL) – Call 105
 Happening Now – Call 111

**What's On
February**

- 8 Garden Club, 11am, 2717
Motueka Valley Highway
- 11 Tapawera Netball Club senior
and secondary school team
trials, TAS, 9:30am
- 13 Tapawera Talking Café, 10-
11:30am, Tapawera
Community Centre
- 13 Digi Drop-in session, Tapawera
Community Centre, 11am-1pm
- 13 Tapawera Netball Club AGM,
TAS, 7:30pm
- 20 Articles for Informer close 5pm
- 20 TDCC monthly meeting,
Community Centre, 7pm
- 23 Girls Friday, Kohatu Flat Rock
Café, 11:15am
- 27 Tea and Talk, Memorial Hall
10:00am - 11:30am

**GP & Nurse at
Tapawera Clinic**

(during school term time):

GP clinics – Mondays
9am – 12 midday

Nurse clinic – alternate
Tuesday mornings - phone
541 8911 for dates

* *Do you have an event you
would like listed in What's On?*

* *Or a community group or
organisation you would like
included in the directory?*

If so, please email
tapawerainformer@gmail.com