

Music in the Mountains 2024

Music in the Mountains has become an annual event and will be held again from the 25-29 January 2024 on the school grounds.

The school welcomes these visitors and the amazing support they bring to the school and our local community.

Craft Fair – the committee have invited any locals who would like to run a stall – this will be on Sunday 28th January from 11am – 1.00pm.

Remember also that there is live entertainment on the Friday, Saturday and Sunday nights commencing at 7.00pm. You are very welcome to come along and enjoy the evening's music.

Please contact Susan Ellis, 0220722838, if you or your group would like to hold a stall. The Motorhome Committee request that stalls are not erected before 11am on the Sunday morning.



Merry Christmas and a Happy New Year!

Many thanks to everyone who makes the Informer possible - our many contributors, advertisers, the school for printing and the posties for distribution. There will be no Informer in January so the next edition will be February - content due 20th January 2024.

Notice to Advertisers

After keeping advertising rates at the same level for many years, despite rising printing costs, the Tapawera Informer would like to notify all advertisers that our rates will be increasing next year. I will be in touch with regular advertisers once the new rates are agreed with the TDCC. Thanks to you all for your ongoing support of the Informer.

Gill

CAROLS IN THE BROOK



Journey with us through the story of Christmas
Sing your favourite carols
Stanley Brook Community Church
6.30pm - Sunday 17th December 2023
Shared supper to follow in the hall



**Every Friday 10am - 12pm
Tapawera Memorial Hall**

Open and welcoming time for all mums, dads, caregivers, grandparents, and little ones to come together and support each other

Rural Mums Tapawera is proud to be associated with



For more details visit our Facebook page: Rural Mums Tapawera or Contact Abby on 0221654460

voltz

ELECTRICAL LTD

Julian McGaveston
Registered Electrician

For all your domestic, commercial and rural electrical needs.

T: (03) 522 4488
M: 021 566 645
F: (03) 522 4698

E: voltzelectrical@silkweb.net.nz

2227 Wakefield Kohatu Hwy. RD2. Wakefield 7096

RURAL POST, RD 2 Wakefield

Contact Nick & Jackie Costley for all your RD 2 Wakefield postal needs.

Including prepaid envelopes, stamps, courier items and local freight from Wakefield, Dovedale and Tapawera. Prescriptions from Wakefield.

Phone 0275418581

Mark & Tania Gill
T/A MTJ Transport
RD2, Nelson
NZ Post Rural Contractors
Servicing
Motupiko-Korere-Kikiwa-Tophouse-St Arnaud-Glenhope

For all your Postage, Milk & Courier Freight
Operating 3 Days Weekly
(Monday-Wednesday-Friday)
Departing Nelson 8.00am
Phone 546 6295

Material & adverts for Informer

All material is to be sent to either:

Informer, PO Box 15, Tapawera, 7055
or email- tapawerainformergmail.com

To be received by 5pm
20th of the Month

If emailing a word document please send in Word as an attachment.

If sending an advert please save as a jpeg before sending.

Please check your emails to see your article/advert has been received as sometimes there needs to be alterations.

Advertising rates for Informer

Standard advertisement	
1/4 page advert	\$25
1/2 page advert	\$35
Full page advert	\$50

Adverts that require editing may cost extra

The Informer is produced and published by the Tapawera and Districts Community Council, PO Box 15, Tapawera, 7055;
email: tapawerainformergmail.com
Circulation 635
Editor: Gill Hammersley
The Editor and Publisher try to ensure information published is truthful

and accurate, but do not accept any responsibility for errors or omissions, or for any consequences of readers' relying on the information published. Opinions expressed by contributors may or may not be endorsed by the Editor or Publisher.
All material submitted, whether editorial or advertising, is accepted at the discretion of the Editor and the Publisher.



Seniors' Snippets with Janine Leeden

Our November Tea and Talk was the final for the year. We rounded off the year with a BBQ picnic in my backyard, enjoying some of the seasonal flowers that are in bloom, some good food and some shared laughs as we looked back at the year that has been.....and that has passed very quickly indeed.

There will be no Tea and Talk for December but we will definitely meet back at the Memorial Hall on Tuesday, 30th January, 2024. While it's the day after Nelson Anniversary, it's also a couple days after Straya Day, so being the organiser I reckon I might just run it with an Aussie theme, with lamingtons or a damper, some Billie Tea and a yarn or two; maybe some Lawson or A.B. Patterson (you know I'm partial) to round things off. The alternative could be Haggis to celebrate Burns' Night on 25th for those with a bit of Scottish blood in them – Bring out the Bravehearts! (A disclaimer is that we will need a translator for Burns' poetry). Hmm, I think this year I'll stick with the lamingtons and damper.

To coincide with when people are in the Village attending the Wellby Talking Cafe on Tuesday 12th December, and again on 13th February 2024 (none in January), enjoying the sunshine outside the Purpose HQ Cafe, I have organised for Helen McCubbin from Tasman District Library to offer their Digi Drop-in session at the Community Centre from 11am-1pm. For the next few months she has information that might make internet access more affordable for those struggling financially using Skinny Jump. If you currently can't afford and don't have internet connection at home, please call in to find out if you qualify and get set up on the day!

Our weekly Sit and Be Fit class will take a break for two weeks over the Christmas period. At this stage we will finish up on the 15th December and resume classes on Friday 5th January. We will continue to meet at St Peter's Anglican Church from 10-11am for some gentle exercise, not so gentle laughter (the participants are pretty rough on the instructor) and a cuppa, all for \$3. Please feel free to come along and join in for some relaxed socialising for over 50s.

I wish you all a safe, well and very happy, relaxed Christmas and New Year period and I look forward to many more activities, laughs and get-togethers in 2024. Again thank you to my amazing volunteers who help make our activities welcoming and fun for all. Bless each and every one of you.

Are you having a digital dilemma?



Are your devices causing you a drama?

Did you want to find out what your library has to offer?

Come along to the Digi Drop-in session at the Community Centre

Tuesday, 12th December, 11am-1pm

Tuesday, 13th February, 11am-1pm.

Tasman District Library staff will be there to offer support.

Skinny Jump

No internet at home? Is cost a barrier to you getting the internet at home? Skinny Jump is a low-cost, pre-pay internet service for homes with families with school aged children, job seekers, senior citizens, people with disabilities and people living in social housing. Stop into the Digi Drop-in to find out more about Skinny Jump and see if your address is within coverage.



Providing gentle guidance when you need it most.



Simplicity Funerals

Simply respectful. Simply affordable.



Anna Loach
Manager / Funeral Director
Dip FD Reg. FDANZ

NELSON & TASMAN WIDE, WE'RE PART OF YOUR COMMUNITY

Phone 03 929 5145 | 276b Queen Street, Richmond
nelson.simplicity.co.nz



SEED NZ

Mara Wera - Community Hot Garden

WE NEED YOUR HELP!!!

Over the past few months our amazing leaders on this project have had a lot happening with Tangi and surgery and have unfortunately not been able to give the garden the attention and planning we would normally give it.

So we are making a call out to all our local green fingers to please be able to give us a hand to spick and span this awesome space up again. We have had individuals in the community pop in when they are able to try and stay on top of things and to ensure that the kai we are growing is not going to waste but we need some major weed wacking and skip filling. It's super close to Christmas but we will be down at the garden over the weekend of the **9th and 10th of December 9am - 2pm, as normal sausage sizzle will be provided and petrol, 2 stroke and diesel for any equipment that you bring and use.**

If you have any questions please contact Cherie Tirikatene on 021 733 228

Te Ahi Tautoko o Tapawera - Wood Bank

Our wood bank now has approximately 800 tonnes of firewood that is starting to get processed to be able to supply whānau for next year. We are also training up our rangatahi to be able to support this project and look forward to receiving much needed support from our stakeholders to finalise our processes of bookings and deliveries to ensure this project is sustainable and has longevity. Thank you so much to those that have and continue to support us.



Purpose HQ Fitness Trust

Gym

The trust has great news to share about our consulting room. This will soon be under construction and ready to be used in the new year to support hauora and specialist care. If you think that you would like to use this space please email us and let us know what you would like to use it for. We have had interest from people offering natural healing solutions, physio and massage, which is great as this will inform us as to how we will fit it out. If you are interested in helping with this or using it please email us on fitness@purposehq.co.nz

Cafe

We are definitely heading into the busy season which is why you may have seen us posting for more staff. Thank you to all those that have applied. We have had a range of experience and availability apply so we are just working our way through that and training. We also want to reiterate that we are committed to employing local to serve our community with our yummy kai and coffee with a smile.

Trustee Profile

Our longest standing and super amazing trustee Sharlene Jukes.

Sharlene has lived in Tasman all her life and moved to Korere some 13 years ago. Sharlene has been dedicated to our Purpose HQ Fitness Trust whānau since its inception. She has supported the Trust and all our adventures and is the backbone that ensures our t's are crossed and our i's are dotted with all our reporting and administration. Sharlene was also key when setting up our Purpose HQ Cafe with her many years of experience in the hospitality industry. When not running around for us at the Gym/Cafe Sharlene is supporting her son Aiden with all his interests and enjoying their space in Korere with husband Blair. Thank you Sharlene for all you do.



Tapawera Playcentre 



Our Playcentre will be closed over Christmas and New Years

Our last day for 2023 is Thursday 14th of December from 10am till 1pm

And we will reopen again Monday the 29th of January 2024 From 10am till 1pm

Where can you find us
56 Main Road, Tapawera, 7096

When are we open
Monday's and Thursday's
10am till 1pm


Contact us
Email: tapawera@Playcentre.org.nz
PH: 03 522 4456




Welcome to our Village

COME TO A TALKING CAFÉ

Connect with your community




Talking Cafés are an opportunity to meet people, make new connections and learn more about your community.

Pop in for a quick cuppa, or stay for a longer conversation with friendly people. All welcome, no bookings required.

Upcoming Tapawera Talking Cafés
Purpose HQ Cafe (outside tables) or Tapawera Community Centre if inclement weather.
Tuesday 12th December, 10-11.30 am
Tuesday 13th February, 10-11.30 am

For more details:
wellby.org.nz
or phone (03) 546 7681




TOWN & COUNTRY VET

"...for all creatures great & small..."

Regular Tapawera visits discounted mileage T&Cs apply

Ph 544 1200

info@tcvet.co.nz * www.tcvet.co.nz

25 Edward Street, Wakefield
35 McGlashen Avenue, Richmond

24 hour emergency vet




TAPAWERA ELECTRICAL

Tony Stephens
Registered Electrician

Ph/fax 5224257
0276249489

All electrical needs
Domestic & Rural
Wiring, faults, some home appliance repairs
New heat pump installations



Free Quotes
Competitively priced



VAST EXHIBITION
OPENING FRIDAY 26th JANUARY 2024

GUEST ARTIST

KIRSTIE HOGG





Visual Arts Society of Tapawera

V. A . S . T. ART EXHIBITION 2024

Shedwood Hall. Main Road Tapawera. Opening night Fri 26th Jan 7pm

Open daily 10am – 4:30pm. Late night Saturday

V.A.S.T Exhibition to showcase Artists of Tapawera in all Media

Conditions of Entry – Open to all media, (metal, wood, fibre, painting etc)

- ❖ School students free entry
- ❖ Entry limited to Residents in the 'Informer' area Ex Tapawera residents and Invited Artist(s).
- ❖ New & emerging Artists welcome, a membership fee of \$15 per year allows exhibiting
- ❖ Responsibility for the Artworks Insurance and protective wrapping lies with the Artist
- ❖ Artists need to be available for the roster while the exhibition is open (approx. one day)
- ❖ All items ready to display, and to be delivered to the Hall on Thursday 28th Jan between 10am and 2pm. Works to be collected after 5pm Mon 4th Feb
- ❖ Works previously exhibited at VAST not accepted. Number of works may be limited due to area available.
- ❖ Additional artwork will not be allowed into the exhibition after opening unless prior arrangement has been made. Sold and uplifted artworks may be replaced.
- ❖ Commission rate on items sold is 10%
- ❖ **Please** include your artist profile, business cards and title cards for your work.

Please return Intent to Enter Form by January 17th 2024

Entry Forms can be sent to Dallas Robinson Box 50 Tapawera 7098

Detach Here.....

INTENT TO ENTER

Name Signature.....

Address

Phone E Mail

Number of Entries Media



From the Library

Only a couple of weeks of term left now and I know members without children at school can be unaware of the school holiday dates so a reminder that the library will be closing on the 13th December and re-opening on the 31st January.

I'm sorry we won't be open during the holidays but each of us will be busy or away. Do stock up on as many books as you like before then.

Right, drumroll for Jack Reacher fans. We have the new Lee Child book 'The Secret'. You can reserve it, there is no charge for reserving or for new books. How many libraries can say that I wonder?

The Hell Pizza wheel challenge has been going well with children, every book read and reviewed gains a tick on a seven book wheel and completed wheels get a pizza prize when the challenge ends. Some children are heading towards free pizzas for the whole family!

We no longer have Denise as our teacher-in-charge, Jill is our new liaison with teachers. She has lots of good ideas to enhance our library which will kick into action next year.

We would still love to get more community folk through our doors, this is more important than ever with Councils looking at the necessity of libraries like ours. Early next year we'd like to think about an Open Day with coffee and cake to encourage folk to see what a great library we have here.

If you haven't yet logged onto our website at nz.accessit.online/TPW00 (last two digits are zeros) to see our whole catalogue then you really should. You can also access your own account or your children's just by asking us for your membership numbers.

You can find us behind the tennis courts at the school. Our hours are 10.30-1.30 Monday to Friday, members can obtain a key from the office and leave book details at the desk during the usual school hours.

New members are very welcome, and membership is free.

Our phone number is 5224337 ex213, email library@tapawera.school.nz and website as above.

Happy reading and may you get many new books for Christmas folks.

Laree for the library team.



WAKEFIELD & DISTRICTS
COMMUNITY HEALTH CENTRE

Christmas and New Year

As in previous years we will only be closed for the statutory holidays. During the short week between Christmas and the New Year we will be running a skeleton staff at reduced hours and will only be accepting acute appoints on the day.

Repeat Prescriptions – Christmas and New Year

With Christmas approaching, it is a good time to double check you have your long-term medications ordered in good time. Give us a call or order through the portal.

Meningococcal Disease

Do you have a child starting university, living in halls of residence? They are eligible for vaccinations. Please see below for more information.

Although meningococcal disease can affect anyone, teenagers and young adults living closely with others (e.g. in boarding schools or university halls of residence) are at high risk and should be vaccinated to protect against meningococcal disease.

- Menactra® is free for people aged 13 to 25 years who, within the next 3 months will be living, or are in the first year of living in:
 - boarding school hostel
 - university hall of residence
 - military barracks
 - prison.
- Menactra, NeisVac-C and Bexsero are free for people who have low immunity from certain medical conditions, or if they are a close contact of a meningitis case. You can purchase these for those that are not eligible for a free one.

Meningococcal vaccines help protect you for up to 5 years. Talk to us if your last one was more than 5 years ago.

For more information about getting immunised against meningococcal disease talk to your doctor or nurse.



The team here at Wakefield Health Centre wish you a healthy and peaceful Christmas and New Year.



WADSWORTH MOTORS LTD.

- Coach Charters & Tours
- Mini Bus Hire.
- School Transport
- Professional friendly drivers
- Members of the Bus & Coach Association

Over 100
Years of
Service

wadsworthmotors@extra.co.nz
100 Main Rd, Tapawera
www.wadsworthmotors.co.nz

027 4873167



Relaxation Deep Tissue
Deep Flow Bodywork

60 min Massage \$85

90 min Massage \$120

Ph/Text or Fb message for an appointment
Gift Vouchers Available!

Sam 027 5224189

4827 Motueka Valley Hwy, Tapawera

Tasman Bay Chiropractic
64 Oxford Street Richmond



Keeping you in the game since 2002

Referrals, families and
all new clients welcome

Visit our website or call for more information

tasmanbaychiropractic.co.nz

03 544 4554

Monday-Saturday

Find us on 



**Zac is Back.... In Tap
With
The Harmony Hunters**



**Friday 8 December
Shedwood Hall, Tapawera
Doors open 7pm**

**\$25 ticket – door sales only
cash or phone bank transfer
Raffles Available**

BYO Drinks & Nibbles

**Fundraiser to assist Zac's travel to Tamworth in
January 2024**



**Cancer
Society**

Te Kāhui Matepukupuku
o Aotearoa

**Survivors and Thrivers
Support Group
Tapawera**

Connect and chat with others
impacted by cancer

Thursday 14 December

1.00pm-2.30pm

Tapawera Fire Station
Main Road, Tapawera

To register please contact
info@cancernelson.org.nz
or phone 03 539 1137



Golden Bush Garden Club

We held our monthly meeting on Thursday 9th November at Sue and Geoff Persen's large country garden at Tui. Between the showers, sometimes heavy, we managed to explore all the different areas. There were many hidden nooks and crannies and interesting garden art throughout the ever expanding garden.

The auction was really large with a wide variety of plants on offer and the four raffles of garden art etc. (made by Irene) were won by Eve, Debbie, Peter and Mahala.

The December meeting is on the 14th at Judy Hodgkinson's, 863 Tadmor Valley Rd. There will be plenty of parking in the paddock alongside. Please bring a chair, cup and a plate of finger food for the shared Christmas lunch. We will be having an auction and hamper raffles. For every item that you bring for the hampers you will receive a ticket (extras can be purchased as well). Please check that the food items have not gone over their expiry date. If you have any spare baskets for the hampers they would be much appreciated.

There are still a few spaces on our calendar for next year, so if you have any ideas or are prepared to open your garden for a meeting at some stage please think about it, and don't be shy. It is so good to have a variety of places to visit and enjoy, whether they be large or small.

This is a lovely time of the year and with the recent rain everything is so lush and colourful, weeds included!

Happy Gardening

Shirley Percy



Tapawera Creative Fibre

Here we are already nearing the end of November, Christmas wares are all around and the

days are certainly warming up.

Our visit to Anne Grassham at Hiwipangowas enjoyed by all and a welcome diversion to our usual craft day.

Wakefield Knitting Group visited, three of their members dyed some wool, using the frypan and crockpot methods very successfully. Thank you to all our members who put on a lovely lunch to share.

Anchor Restaurant and Bar was a relaxing lunch followed by some shopping at Spotlight, LinCraft and Crafty or Wot.

Tuesday night group is going well with most of us carrying on with works in progress.

Our final day for the year is December 13th with our Christmas lunch at Vicky's.

No matter if you spin, sew, knit, crochet, or cross stitch, you are very welcome to join us at the Memorial Hall 10am – 3pm each Wednesday, or at 10 Totara Street 7pm – 9pm on a Tuesday evening.

I wish you a relaxing and cheerful Festive Season.

Stay Safe Folks

Dallas



Wayne is still operating in Tapawera, from 336 Tadmor Valley Rd, Rakau, for all your small engine repairs & servicing; oils; batteries; tyre sales & fitting; chainsaw sharpening & replacement chains; to make sure your equipment is in top shape to keep doing what you need to do!

We are also equipped to do mobile maintenance where you are – servicing ride-ons, quads, tractors, diggers, trucks, etc. Our call-out fees are cheaper than trying to get it into town!

Call Wayne on 0277 769814

HANDYMAN

- * General property maintenance
- * Clean out/tidy up
- * Water blasting
- * Gardening
- * Chain sawing
- * Repairs
- * Demolition
- * Any farm work

Fair hourly rate. Honest and hard working.

Local references available.

Please enquire to Jeremy Ellis (03) 522 4460

Harcourts Rural

PLATINUM BLUE LIMITED LICENSED AGENT REAA 2008

Your Local Rural and Lifestyle Experts

Merry Christmas

Wishing all our clients a very Merry Christmas and a Happy New Years.

We've had a busy lead up to the Holiday Season with lots of interest in the Rural and Lifestyle sector and looking forward to an exciting start to 2024.

Thanks to everyone for all their support and business this year.

We'll see you after the break.



Team

TOBY RANDALL

027 233 9170 | toby.randall@harcourts.co.nz



**Hato Hone
St John**

Support your community and become an Ambulance Volunteer

Make a difference and contribute to your community by joining us on our mission to improve the health and wellbeing of all New Zealanders.

Work with a dedicated team, learn life skills, and meet new people.

For information contact Tim
Hato Hone St John Group Operations Manager
027 255 3981



Motupiko Hall Educational Trust

Invite applications for grants of assistance for educational purposes from people living within the Tapawera Area School catchment area.

Grants are available to assist towards:

- Course Fees
- Cost of living or
- Travel

In the following categories:

- Tertiary education
- Apprenticeships
- Special learning opportunities
- Re-training
- Community education projects

Applications close 31 December 2023

Application forms are available from the school office.

If you require any information please contact:

Susan Ellis 0220 722838

STOLEN/Missing Ragdoll Male Cat called SMOOCH



Smooch has been missing for 12 weeks now. Please keep an eye out for him, I'm offering a reward for his safe return.

Thanks

Julie, 0223514383



TAS Newsletter 13

27th October 2023

*From the Principal's Desk
Tēnā koutou e te Whānau
ki te Kura o Tapawera*

*Help shape the future of our school. Please complete our survey around our **strategic goals and local curriculum**. The survey is one way we will be consulting to get your voice to inform our new strategic plan and local curriculum development. Please have your say by completing the questions by Friday 24th November. By filling out the survey you go into the draw to win a \$100 grocery voucher! Follow the link: https://docs.google.com/forms/d/e/1FAIpQLSeQPwcNAu9toAVeGmBRy5VJZMLAB_CR9IZ_Q1hFuFwqtD5RkCw/viewform?usp=sharing As well as the survey we are planning hui with whānau to discuss our goals and curriculum in term 4. Dates will come out soon.*

2024 Staffing / Resources We are currently allocating staffing and resources for next year. To support us in getting this as close as possible to the correct numbers, please let us know of any changes for 2024. If you have a student to start please let the office know asap. Thank you for your ongoing support and aroha for our kura.

Sarah Coard
Principal
principal@tapawera.school.nz

Other School News

Spirit of Adventure: My favourite was the rafting race as it was a good confidence booster for my team. Although my team was continuously arguing at first and struggled to listen to each other, we eventually pulled through and secured the win. Every morning we woke up at 6:30 so we could jump into the freezing cold water, which was extremely challenging. by Shakaia MacDonald, Year 10

Spirit of Adventure: The things that really stood out for me were: the mild 6:30 am swim every day, the knot-tying competition, up and overs and the raft race. These events stood out for me as they were a challenge to complete/ compete in.
by Tamati Bright, Year 10

Jam Fellas on Tour

We have just returned from our Trip to Hanmer Springs and Kaikoura. Firstly, we would like to thank the people who supported us to get there. Friends of the School, Tapawera Sport and Rec, Kakatu Retreat, and Kaikoura Senior Management of the School who allowed us to go. The people who supported our fundraisers brought jam and socks and helped out at the Moto X. Auckland Point School (Mrs Strawbridge) Kath Christiansen, aka Camp Mother, for making heaps and heaps of Jam, Relishes, Chutney and sauce.



27 JAN 2024
TAPAWERA
SHEARS &
SPEED SHEAR

Tapawera shears held at the Tapawera Recreation reserve from
10am

Speed shears held straight after the shears at the Tapawera
Recreation reserve contact Kerry Irvine 0275435424

10 am start

**Support your local
shearers**

Coffee Cart

BBQ lunch

Speed shear

**Who will be the
fastest?!?**



Jam Fellas on Tour Cont.

The Trip... we had a fabulous time. There were so many activities, including Hot Pools, the Hydro slide was so much fun, and the jet boat ride was freezing but was excellent. We hung out at the Maze and played mini golf. We had a fun go on the Hanmer Rockets, but..... oops, we did have a bit of a collision with the gutter, but we survived to head back to the hot pools.....no one was injured in that activity. Even the Rocket survived. The Lolly shop was like a dream come true: lollies, lollies.

We hit the track on a wet and wild Tuesday for Kaikoura for an adventure on the Whale Watch, where we were lucky to see a whale. Luckily for us, we weren't the ones being seasick. It was very bumpy. We had an exploration down at the Peninsular; going out on the beach, there was a notice smell wafting off the seals, and we almost stood on a little one. We had a visit to the Lavender Farm. Tyler's choice, we went and spent ages at the Kaikoura Hunting and Fishing Shop. It was like a treasure trove, with so much to see. Bernie's Diner was a real surprise. It was a '60s diner at the front, but we went out the secret door to find heaps of beautiful classic cars. This place was a real hit with all of us. Kaikoura has some very quirky shops. A lot of our Time spent at the table tennis table was fun. Friday morning, Time to pack up; we had another stop off to buy Cody a birthday present, a very cool sweatshirt. In Blenheim, we stopped off at the Makana Chocolate factory, where we got to try samples of the chocolate—a fun Time had by all. Cody's favourite activity was going to the Lolly Shop. Tyler's was the Whale Watch. Matts was the Hydro slide with all the lights in. Camp Mothers was a Jet boat ride. Judy's was the Jet boat ride and winning the mini golf.

Judy has the last say....It was a pleasure to take the Jam Fellas on Tour. They displayed all the school's Fire Way Values and all have a great sense of humour and lovely manners. The planning will now start for next year. Thank you to everyone who has helped us to go on tour. The Jam Fellas

Year 10 Social Science students are **volunteering at the Op Shop** again on Wednesdays.

Uniforms for Tapawera Area School are available online. Search Schooltex uniforms and type Tapawera Area School in the search tab.

Newsletter 15

From the Principal's Desk

Tēnā koutou e te Whānau ki te Kura o Tapawera

Wellbeing Survey 2023 Results. At the end of Term 3 and the beginning of Term 4 Year 5-13 students completed a Wellbeing Survey in school. The survey was created by the New Zealand Council for Educational Research. It asks students about their experiences at school around School-wide climate and practices, teaching and learning, community and aggressive student culture. The results help us to develop a plan around ensuring our student's well-being and support the writing of the new strategic plan.

The results showed: What is going well:

- ▮ *Home-school partnership*
- ▮ *Respect for culture*
- ▮ *Safe school*

These are the areas in which students scored high.

However, the areas needing improvement are:

- ▮ *Aggressive student culture*
- ▮ *Prosocial student culture*

TAS needs to work on our school climate particularly how students treat each other. Both sets of data identified aggressive student culture and prosocial student culture as areas needing development and work. Key areas are respecting each other (student to student and student to teacher), use of name calling and put-downs and hitting and hurting. As well a few students are feeling bullied particularly Year 7-13. Using this data, we now need to plan how we can see improved results. Actions that we will take to improve our school culture through our FIRE Way and explicit teaching prosocial behaviours. The survey will be repeated in 2024 and we will share the results again. Thank you for your ongoing support and aroha for our kura.

Sarah Coard , Principal / Tumuaki

principal@tapawera.school.nz



Radio with Pictures Caitlin & Kara Yr 13 DJ presenters for the School Production



All Accounts Matter LTD

For all your accounting and tax needs!

If you are looking for a new Accountant, now is the perfect time! I would love to find out about your business and have a no obligation chat about how I can help you. So don't wait, call me now!

Sonia Emerson Chartered Accountant

GST | Tax Returns | Payroll | Bookkeeping | Cashflow Forecasting
Management Reporting | Rental Statements | Farm Accounts



ACCOUNTING SOFTWARE



2020/2021
Certified
Consultant



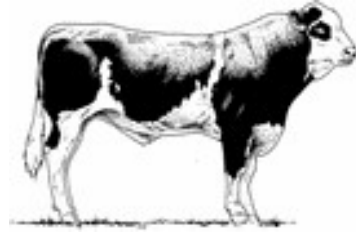
M: 021 221 1009 | P: 03 541 9005 | sonia@allaccounts.co.nz
367 Wakefield-Kohatu Highway, RD1, Wakefield 7095

www.allaccounts.co.nz

Gillespie—1

MAF approved

Home kill butchery



03 547 7746

Butcher / journeyman

Specializing in quality small goods

Factory: 111 Bolt Rd, Nelson

Nelson Tasman
KINDERGARTENS
Tea Kōwhiriwhiriwhiri me te Whānau ki Aotearoa
For the best possible start

Tapawera Kindergarten

We are a recently established kindergarten located on Tapawera Area School grounds offering:

- ◆ A curriculum catering to individual child's needs that is community focused, respectful and inclusive
- ◆ 100% qualified and registered teachers
- ◆ Open all year round
- ◆ A smooth transition to school
- ◆ Flexible hours
- ◆ Up to 30 hours of free early childhood education for 2-5 year olds

Tapawera Kindergarten is welcoming new enrolments now.

Stop by and have a chat with our teachers between 9:30am and 2:30pm or call/email for more information.

Open 8.45am—3pm, Monday—Friday

021 0878 8070

tapawerakindergarten@ntk.org.nz

We are located at the end of the Primary block, near the back field.



Up to 30 hours
free





TAS News Cont. Other School News

Primary School Athletics: this was a huge day for our tamariki- we were so lucky with the weather as the heavens opened at 3.10 pm!

WOW!! A huge thanks to our **Friends of the School** team for our new BBQ tables! They are awesome and we really appreciate your hard work fundraising so we have something nice to sit on at lunchtime.

Our school is **vape and smoke-free** so we take it very seriously when this rule is broken. There have been some allegations about some students who are vaping and some students have had consequences for their actions. The only thing we can do is educate them about the harmful effects and guide them to make positive choices as it is so addictive.

Lower Moutere Athletics What a fabulous day in the sun!! Although the weather might have been against us, we had a ball! 25 tamariki went on camp in **Cable Bay** with Emily Finnie, Tanya Snackers, Sarah Coard, Dion McGaveston and Hannah Barnes. A huge thanks to the staff and parents who made the camp a success. We learnt about the importance of having a raincoat so we could still have heaps of fun. And zip up your tent otherwise, things get very wet!

Congratulations to **Rosa Cameron Year 13** for earning the **Principal's Award**.

Bronco MacDonald has been playing for the **Tasman U13 Volleyball Rep** team. The tournament started at Tapawera against our school team and then they went off to Christchurch to play other teams



Ball Photo before heading to the combined Murchison Tapawera Combined Ball

Events

Friday 9th December Yr 7-8 Rewards Day
Monday 11th December Yr 9-10 Rewards Day
Tuesday 12th December Prizegiving 7 pm
Wednesday 13th December Last day for 2023! Final Assembly

The Year 9 & 10 Tournament Team Teams came to Tapawera from Murchison Area School, Collingwood Area School and Amuri Area School. They competed in various sports, technology and cooking challenges over two days. Cable Bay Camp run for year 5-6 Student by Leaving



teacher Emily Finnie

As told by Susan Fenemor
Staff

PS Next Year I am having a year off school, so the news will be shared by someone else.

The Lady Tradie

Has your husband got a **round**



Spring has sprung

and the grass has riz !

Do you wonder where a handyman is ?

Can't get one ?

Then call " Jen the Lady Tradie "

for all your outside spring clean-up jobs

* Gutters full of leaves;

* Lawns that are starting to bolt;

* Waterblasting those slippery paths

and all that spring growth that just might get away on you.

*** Local Person * Referees Available ***

Consideration & discount shown towards Senior Citizens

FREE QUOTES

Contact Jennifer

Phone or text: **027 544 2663**

After hours/leave a message: **03 522 4453**

Email enquiries to: jentheladytradie@gmail.com

Book Discussion Group

Meet: 4th Thursday in month, 10am
 Contact: Paula Davis ph. 5224341

Federated Farmers

Contact: Harry Matthews - Field Rep -
 0275078901

Golden Bush Garden Club

Meet: 2nd Thursday of month
 Contact: President, Irene Griffith
 0212525098, or Shirley Percy 5224924

Golf

Meet: every Sunday, Ladies 9 hole
 every Tuesday
 Contact: Gary Oldham ph. 0278080578

Historical Society

Contact: Barbara Carleton ph. 5224317

Informer

PO Box 15 Tapawera
 Email tapawerainform@gmail.com

Justice of The Peace

Peter Phillips ph. 5224313
 John Ellis ph. 021 522429
 Brent Hodgkinson ph. 5224381
 Francine Currie ph. 5224245
 Susan Fenemor ph. 0275224009 (text
 during school hours)

MENZSHED

Contact: John Wilmshurst ph. 5224616

Neighbourhood Support

Contact: Gavin Scoble
 ph. 5224585 or 027 7576665
 Email gavin@neighbourhoodsupport.nz

Netball

Contact: Susan Fenemor ph.
 0275224009 (text during school hours)

Ramblers

Meet: each month
 Contact: Shirley Percy ph. 5224924

Shedwood Hall bookings

Contact: Tania Higgins ph. 5224587

St Andrews Church Stanley Brook

Services every Sunday. Cup of tea
 afterwards.
 Contact: Lee Winter ph. 5224160

St John – Tapawera

For emergencies Dial 111,
 Email info@stjohn.org.nz

Tapawera & Dist. Community Church

Service: St. Peter's Tapawera. 2nd
 Sunday of each month at 3pm
 Contact: Church Office 03 541 8883
 Vicar: Rev. Don Moses ph. 541 8883

Tapawera & Dist. Community Council

Meetings: 3rd Tuesday of month,
 7:30pm Tapawera Community Centre

Tapawera Community Centre

Lisa Carleton ph.0274461017

Tapawera Connect

Contact: Phoebe Quinlivan ph. 021 211
 6730 or 522 4929, email:
tapaweraconnect@gmail.com

Tapawera Creative Fibre

Meet: every Wednesdays, Memorial Hall
 Contact: Dallas Robinson ph. 5224984

Tapawera Food Bank

Contact: Suzzi Lankshear ph.
 0277491063

Tapawera Jujutsu Club

Contact: Tony Hammersley ph. 5224609

Tapawera Music/Country Music Club

Meet: Alternate Sundays, Tapawera
 Hotel 7:30pm
 Contact: Elaine Douglas ph. 5418612

Tapawera Op Shop

Contact: Lisa Carleton ph.0274461017

Tapawera Playcentre

Meet: Mon & Thur, 10am -12:30pm
 Memorial Hall ph. 5224456

Tapawera Rugby Football Club

Bookings: ph. Judy Benjamin 5224445

Tapawera Sport & Recreation Society

Contact: Judy Benjamin ph. 5224445

Tapawera Volunteer Fire Brigade

Contact: Dean Millar Chief ph.
 0279651399; Ted Oakly Deputy Chief
 ph. 0210704033

TAS / Community Library

Mon-Fri 10:30am-1:30pm. Contact:
 Lareen Bonnington ph. 5224149
 Library ph. 5224337/ext. 213

TESSI

Contact: Bruce Whyte ph. 5224550

Toy Library

Open Thursday 10:30am-11:30am
 Contact: Jan ph. 5224102

Visual Arts Society Tapawera

Contact: Dallas Robinson ph. 5224984

Wakefield Police

Constable Jamie White –
jamie.white2@police.govt.nz
 Constable Matthew Berquist –
matthew.berquist@police.govt.nz
 Non Urgent (CRL) – Call 105
 Happening Now – Call 111

What's on December/January

December

- 8 Zac Griffith & The Harmony
Hunters, Shedwood Hall, 7pm
- 9/10 Community Garden working
bee, 9am-2pm
- 12 Tapawera Talking Café, 10-
11:30am, Tapawera
Community Centre
- 12 Digi Drop-in, Community
Centre, 11am-1pm
- 14 Garden Club, 863 Tadmor
Valley Road
- 14 Cancer Society Survivors &
Thrivers Support Group,
Tapawera Fire Station, 1-
2.30pm
- 17 Carols in the Brook, Stanley
Brook Community Church,
6.30pm
- 19 TDCC monthly meeting,
Community Centre, 7pm

January

- 20 Articles for Informer close 5pm
- 25-29 Music in the Mountains,
School grounds
- 26 VAST Exhibition opens,
Shedwood Hall, 7pm
- 27 Tapawera Sheers & Speed
Shear, Tapawera Recreation
Reserve from 10am
- 28 Craft Fair, 11am-1pm
- 30 Tea and Talk, Memorial Hall
10:00am - 11:30am