

New Faces for TDCC

The Tapawera & Districts Community Council welcomed two new members at the Annual General Meeting on 19 September.

Wayne Leeden was elected as Tadmor/Rakau representative and Heather Spence was appointed to the Korere/Motupiko/Atapo area. Under the TDCC constitution when two people are nominated for one area, one of them can be appointed to another vacant area by the returning officer.

Heather was happy to cover another area and she will have the assistance of Sharon Rogers who did not stand. Sharon will maintain an interest in community issues and the work of the TDCC.

Steve Udy, Tim Leyland and Samdy Scott were elected unopposed as chair, secretary and treasurer and were thanked for putting themselves forward again for these roles. Steve was also thanked for chairing the TDCC over the past term.

There is positive energy in Tapawera of late with the Community-Led Development Programme, the Tapawera Community Plan (which is close), the community hub feasibility study under way, the re-opening of the Op Shop and more use being made of the community centre including the community workspace. Come and be part of this and join the TDCC.

There are still four vacancies for area representatives. If anyone is interested in putting themselves forward for a TDCC position you are welcome to attend a TDCC meeting or two to get a feel for how the TDCC works and the sort of matters we deal with.

The TDCC for 2023-25 is:

Chairperson: Steve Udy
Secretary: Tim Leyland
Treasurer: Samdy Scott
Stanley Brook/Hinetai Road: Vacant
Glen Rae/Lower Wangapeka/Baton: Vacant
Matariki/Sherry River/Upper Wangapeka: Geoff Proffit
Rakau/Tadmor: Wayne Leeden
Kiwi/Tui/Kaka: Gavin Scoble
Main Road Tapawera/Tapawera Village: Lisa Carleton
(Second position vacant)
Kohatu/Golden Downs/Kikiwa: Vacant
Korere/Motupiko/Atapo: Heather Spence

Tapawera Supports Rescue Helicopter

The Tapawera & Districts Community Council decided at its 17 October meeting to donate \$500 to the Nelson Marlborough Rescue Helicopter Trust. The Council acknowledges the vital service the rescue helicopter provides across the wider region and especially as a lifeline to communities like ours. The donation on behalf of our community is made possible through funds raised by the community op shop.



Chrissy Gillespie to go to Paris Olympics

Time for an update on our South Island Boxing Champion Chrissy who has made her way into the Boxing Team to represent New Zealand at the Olympic Games next year in Paris.

Chrissy has been in Denver Colorado for three weeks at a training camp for the Olympics. The training was consistent, tough and extremely valuable.

Chrissy is training for a fight in November in Wellington before heading to the Solomon Islands for the Pacific Games at the beginning of December.

What an achievement to have a representative from not only the South Island but Nelson as well.

Chrissy has worked and trained hard to earn her place in the team. None of this is funded, so that is an added pressure. All the others are from the North Island.

All donations or fundraising opportunities would be welcome to get Chrissy to Paris.

Everyone is struggling out there including businesses and sponsorship is hard to procure.

Sincere thank you to all who have helped in some small way. Your support is much appreciated.

HANDYMAN

- * General property maintenance
- * Clean out/tidy up
- * Water blasting
- * Gardening
- * Chain sawing
- * Repairs
- * Demolition
- * Any farm work

Fair hourly rate. Honest and hard working.

Local references available.

Please enquire to Jeremy Ellis (03) 522 4460

RURAL POST, RD 2 Wakefield

Contact Nick & Jackie Costley for all your RD 2 Wakefield postal needs.

Including prepaid envelopes, stamps, courier items and local freight from Wakefield, Dovedale and Tapawera. Prescriptions from Wakefield.

Phone 0275418581

Mark & Tania Gill
T/A MTJ Transport
RD2, Nelson
NZ Post Rural Contractors
Servicing
Motupiko-Korere-Kikiwa-Tophouse-St Arnaud-Glenhope

For all your Postage, Milk & Courier Freight
Operating 3 Days Weekly
(Monday-Wednesday-Friday)
Departing Nelson 8.00am
Phone 546 6295

The Informer is produced and published by the Tapawera and Districts Community Council, PO Box 15, Tapawera, 7055;
email: tapawerainformergmail.com
Circulation 635
Editor: Gill Hammersley
The Editor and Publisher try to ensure information published is truthful



**TOWN & COUNTRY
VET**

"...for all creatures great & small..."

**Regular Tapawera visits
discounted mileage
T&Cs apply**

Ph 544 1200

info@tcvet.co.nz * www.tcvet.co.nz
25 Edward Street, Wakefield
35 McGlashen Avenue, Richmond

24 hour emergency vet



Material & adverts for Informer

All material is to be sent to either:

Informer, PO Box 15, Tapawera, 7055
or email- tapawerainformergmail.com

To be received by 5pm
20th of the Month

If emailing a word document please send in Word as an attachment.

If sending an advert please save as a jpeg before sending.

Please check your emails to see your article/advert has been received as sometimes there needs to be alterations.

Advertising rates for Informer

Standard advertisement	
1/4 page advert	\$25
1/2 page advert	\$35
Full page advert	\$50

Adverts that require editing may cost extra

and accurate, but do not accept any responsibility for errors or omissions, or for any consequences of readers' relying on the information published. Opinions expressed by contributors may or may not be endorsed by the Editor or Publisher.
All material submitted, whether editorial or advertising, is accepted at the discretion of the Editor and the Publisher.



Skin Cancer

Summer is coming and while I don't want to spoil the fun I would like to remind people about skin cancer. It is the most common cancer in New Zealand and unfortunately we have amongst the highest rates in the world. It is largely preventable - over 90% of all skin cancer cases are attributed to excess sun exposure.

It is important to detect skin cancer early, especially melanoma. Early detection gives the best chances of successfully treating skin cancer.

Types of skin cancer:

Melanoma - the most serious form of skin cancer, causing over two thirds of skin cancer deaths.

Squamous cell carcinoma (SCC) - easily treated if found early but can be fatal if left untreated.

Basal cell carcinoma (BCC) - the most common and generally the least dangerous skin cancer. BCC can be serious and require surgery if left untreated.

Causes of skin cancer:

The most common cause of skin cancer is too much exposure to ultraviolet (UV) radiation from the sun. People of all ages and skin colours can be diagnosed with skin cancer but those at a higher risk are people who have:

- Fair skin or red or fair hair
- Fair skin that burns easily no matter what hair colour
- Had one or more severe sunburns- especially in childhood or adolescence
- Used sunbeds, particularly at a young age
- A family history of melanoma (parent, brother, sister or child)
- Large irregularly shaped or uneven moles
- A large number of moles

Prevention of skin cancer:

If people protect their skin and avoid sunburn throughout their lives the risk of skin cancer is reduced. It is important to be SunSmart in the months between September and April, especially between the hours of 10am-4pm when the UV radiation levels are very high. In winter it is also important to be SunSmart at high altitudes and around snow and water.

Steps to being SunSmart:

Slip - into the shade where possible.

Slip - on some protective clothing, i.e. Shirt with collar and long sleeves and trousers or long -legged shorts.

Slop - on sunscreen that has an SPF of at least 30 and apply 20minutes prior to sun exposure.

Slap - on a hat that protects your face, head, neck and ears.

Wrap - on some close fitting sunglasses.

Symptoms and diagnosis of skin cancer:

Finding skin cancer as early as possible is the key to successful treatment. You should speak to your health professional if you have a mole, freckle or spot that:

- Is new or changing.
- Does not heal.
- Looks different from others around it.
- Has changed in size, thickness, shape, colour or has started to bleed.

Treatment of skin cancer:

This depends on the lesion, location and patient factors. It can include application of special creams, cryotherapy (freezing), shave excisions (without sutures) and full excisions (with sutures). We are well equipped and can treat most skin cancers at the Wakefield practice. We discuss treatment options and costs with all patients and refer both public ally and privately when necessary.

Skin Checks:

We encourage regular "skin checks" as an effective way of detecting lesions early and improving outcomes. Both Dr Wayne Hurlow and Dr Mark Fry have done extra training in skin cancer medicine and have been accredited doctors of the Skin Cancer College of Australasia since 2017. They offer skin checks for patients registered with the Wakefield Health Centre and these are booked as a dedicated appointment. The cost for a skin check is \$70 for non community service card holders and \$35 for community service card holders.

Enjoy summer but be SunSmart and if you are worried about a spot then come and have it checked out.

Dr Mark Fry

Wakefield Health Centre



All Accounts Matter LTD

For all your accounting and tax needs!

If you are looking for a new Accountant, now is the perfect time! I would love to find out about your business and have a no obligation chat about how I can help you. So don't wait, call me now!

Sonia Emerson Chartered Accountant

GST | Tax Returns | Payroll | Bookkeeping | Cashflow Forecasting
Management Reporting | Rental Statements | Farm Accounts



ACCOUNTING SOFTWARE



2020/2021
Certified
Consultant



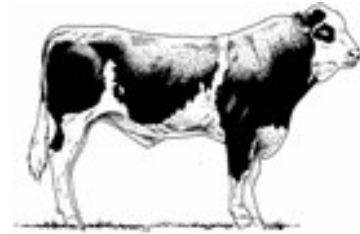
M: 021 221 1009 | P: 03 541 9005 | sonia@allaccounts.co.nz
367 Wakefield-Kohatu Highway, RD1, Wakefield 7095

www.allaccounts.co.nz

Gillespie—1

MAF approved

Home kill butchery



03 547 7746

Butcher / journeyman
Specializing in quality small goods
Factory: 111 Bolt Rd, Nelson

voltz

ELECTRICAL LTD

Julian McGaveston
Registered Electrician

For all your domestic, commercial
and rural electrical needs.

T: (03) 522 4488
M: 021 566 645
F: (03) 522 4698

E: voltzelectrical@silkwab.net.nz

2227 Wakefield Kohatu Hwy. RD2. Wakefield 7096



Relaxation Deep Tissue
Deep Flow Bodywork

60 min Massage \$85

90 min Massage \$120

Ph/Text or Fb message for an appointment
Gift Vouchers Available!

Sam 027 5224189

4827 Motueka Valley Hwy, Tapawera

Senior's Snippets with Janine Leeden



Our early October adventures using the Nelson Tasman Community Transport Trust vehicle were a lot of fun. On Sunday 1st October a group of us travelled to Motueka for the Positive Ageing Expo. It was a lovely sunny day and we had the privilege of an impromptu garden visit in Brooklyn, followed by time to get fresh fruit, veggies and seedlings at the Mot Sunday Market before spending time visiting all the stalls at the Expo, followed up by a chance to grab a few groceries at Countdown as well. All in all, a very beneficial trip.

On Tuesday, 3rd October another group headed into Annesbrook for the Age Concern afternoon tea to celebrate International Older Persons Day. The event was booked out and we were warmly welcomed and treated to entertainment, food, tea and coffee. There was a bit of added fun when the Chairman of Age Concern, Bevan Grant, chose to join us at our table and joined in using the wee props I had taken along to get some of our rabble to allow photographs to be taken. He's agreed to come and talk to our Tea and Talk group early next year after enjoying our company.



To coincide with when people are in the Village attending the **Wellby Talking Cafe on 14th November**, hopefully enjoying the sunshine outside the Purpose HQ Cafe again, I have organised for Helen McCubbin from Tasman District Library to offer their **Digi Drop-in session at Community House from 11am-1pm**. This month she has information

that might make internet access more affordable for those struggling financially.

The end of the year is rapidly approaching and with our next **Tea and Talk** being **28th November**, when we usually do some Christmas celebrations, I thought we might do something a little more low-key and relaxed with a BBQ in my back garden. The garden should be looking lovely by then, with the hops winding their way well up the strings, creating a pretty forest of green around us. Fingers crossed for a lovely day and so we'll **start a little later at 11am to 1pm**. Tapawera Connect will provide meat, bread rolls and some punch. You just need to bring a bowl of salad or a plate of sweets to share, a folding chair if you have one and a cheery Christmas attitude and maybe a sun hat with some zinc on your nose!



Are you having a digital dilemma?

Are your devices causing you a drama?

Did you want to find out what your library has to offer?

Come along to the Digi Drop-in session at the Community Centre on Tuesday, 14th November, 11am-1pm.

Tasman District Library staff will be there to offer support.

Skinny Jump

No internet at home? Is cost a barrier to you getting the internet at home? Skinny Jump is a low-cost, pre-pay internet service for homes with families

with school aged children, job seekers, senior citizens, people with disabilities and people living in social housing. Stop into the Digi Drop-in to find out more about Skinny Jump and if your address is within coverage.



COMMUNITY PLAN

▶▶ HAVE YOUR SAY ◀◀

We want you to have a say about which projects and ideas in the Draft Community Plan are the most important to you and to the Tapawera community.

You can feed back on the draft plan in several ways:

- This Informer includes a feedback form;
- You can fill out a form from the 4 Square and pop it into the drop box there (same for the Informer form);
- You can go to www.tapaweracommunity.nz/planfeedback (or scan the QR code at right) to feed back online;
- Or attend one of our



November Community Drop-in Sessions

Saturday, 11 November

Motupiko Church 9am-11am

Tadmor Valley Church 12pm-2pm

Old Stanley Brook School 3pm-5pm

A chance to give feedback on the Draft Community Plan and ask any questions.

Feedback closes 15 November

Email Nicola for more information: nicolaallan434@gmail.com





Neighbourhood Support helps with the community plan

Over recent months I've been a member of a small team working on the draft Tapawera community plan. Some of my time doing this has been a contribution to the Tapawera community from Top of the South Neighbourhood Support from my eight hours a week role as Tapawera Area Connector.

From the time last year when I took on my part-time role TSNS has wanted to help build connection and resilience in our community and help fill gaps. We see contributing to the community plan process as part of this.

Feedback on the draft Community Plan closes 15 November. Details about how to feed back on the 20 recommendations is in this edition of the Informer. Please make sure you have your say.

Preventing Fraud and Scams

As our world becomes increasingly connected digitally, it's more important than ever that we stay aware of potential threats to our safety in the technology space. Recent publicity has emphasised how much scamming is going on and we all need to keep our wits about us every day to avoid being scammed.

It's sad that we can't trust people as we might have once but it's a reality of modern life. We either get a touch more wary and even suspicious (in a good way) or we get burnt.

Dishonesty offences are listed regularly the NZ Police's Nelson-Tasman crime stats. Luckily in the past few months I have noted only one in Tapawera but maybe we've just been lucky. Also the police stats only record offences actually reported.

Many scams are either over the phone or online. Here are some tips to reduce your risk:

Staying Safe Online

- Never give out your passwords, log in details, or account info.
- Don't respond or click on any links to verify your account information, even if it looks like it is from a real organisation.
- Never share personal or financial information by text or email.
- Do not respond to texts from unknown numbers, or any that appear suspicious.
- If a 'friend' sends you a text with a suspicious link, call them to make sure they weren't hacked.
- If a business or organisation sends you a text that you weren't expecting, call them to verify its authenticity using

the phone number on your bill or statement (or their official website).

- If you receive an email from a business or organisation and suspect it might not be from whom it claims, look carefully at the email address and cross reference it to those provided on the official website. If still not sure, call the phone number listed on the official website to clarify that the email was truly sent from the organisation.
- Only shop on trusted and verified websites. Look for the padlock icon by the website address.
- Be wary of unexpected deals, contests, or log in requests.
- Check and adjust your privacy settings.
- Log out after using a shared computer.
- Report suspected scams.

Credit Card and Eftpos Fraud

Theft of credit and EFTPOS cards is a common crime in New Zealand. So too is the associated fraud that comes with someone using a stolen card to purchase goods or services.

While Police work closely with banks and retailers to prevent this type of fraud, there are a number of simple things you can do to assist.

- Keep your credit or EFTPOS card safe. If it is stolen or goes missing, inform your bank or credit card company right away and have it cancelled immediately.
- Guard your Personal Identification Numbers (PIN) closely. Never give it out to anyone and avoid any easily guessed codes such as your date of birth or sequential numbers e.g. 1234.
- Never keep your PIN and card in the same place. Memorise it and ideally use different PINs for different cards/accounts.
- Destroy expired cards and sign new cards immediately.
- Match credit card and bank statements with your receipts. Follow up on any discrepancies.
- Keep a secure record of your card number, expiry date, and any numbers to call if your card is lost or stolen.
- Tell your bank or credit card company if you change your address so replacement cards are sent to the correct place.
- Look out for tampering of ATMs, EFTPOS machines and fuel pumps. Obvious signs of tampering include anything loose, crooked, or damaged. Avoid using a machine if anything looks unusual. Use machines in well-lit, visible sites and cover the keypad when entering your PIN.
- Know who you are dealing with when shopping online. If you're unsure, do a background check to make sure others haven't reported the website as a scam. If the deal sounds too good to be true, it probably is!
- Only make telephone transactions when you have instigated the call and are familiar with the company or individual. If in doubt, get them to send you an email with more information you can verify. Never feel pressured to provide sensitive information or pay right away.



VISIT A BEAUTIFUL GARDEN

A FUNDRAISER FOR ALZHEIMERS NELSON TASMAN

DATES:



SATURDAY 11TH NOVEMBER 10 A.M. TO 4 P.M.

SUNDAY 12TH NOVEMBER 10 A.M. TO 4 P.M.

MONDAY 13TH NOVEMBER 10 A.M. TO 4 P.M.

ADDRESS: 27 UMUKURI ROAD, RIWAKA

The garden will have a sign outside the property.

Parking area sign-posted.

Some tables and chairs and hot water will be available.

You are welcome to bring a picnic.

Entrance is by donation and there will be a raffle. Cash only please.

We look forward to welcoming you at Geraldine and John's beautiful garden.

Anyone wishing to have a stall, please contact Sandy Rogan Ph: 021 257 2394.



Dementia is one of New Zealand's most significant and growing healthcare challenges. It has a significant impact on the person living with the condition and their whānau and friends, please support us to support them.

Information pamphlets will be available on the above days.





My extra tips:

Something I always do when I receive an email and it just feels a bit “off” is that I try to remember to slow down. One email program I use shows the actual email address beside the name of the sender. With other programs if you hover with the mouse over the sender, the actual address the email has come from displays. If the email has supposedly come from say, Kiwibank, but the address is a Gmail account (or looks odd in some other way), then it's a scam.

Be alert. Look out for little signs like the email supposedly coming from your bank, but they address you as “dear customer” - it's almost certainly a scam. If your bank is talking to you as a customer, they know your name and will use it. And of course, receiving emails from a bank you don't use or being asked to pay to release a package you haven't ordered are shouting out “scam.” But at other times the scam may be plausible, and we need to apply the advice above.

For most of us our default setting is “trust,” but scammers are using this against us online or over the phone.

Why join Neighbourhood Support?

Top of the South Neighbourhood Support is all about making connections with your neighbourhood on a street or rural locality level, and with your community at large. We believe that connection builds resilience and helps neighbourhoods feel safe and supported.

It's easy to join Neighbourhood Support! Just go to <https://topofthesouth.getsgready.net/>. If you're not on the internet, contact me and I'll send you a paper form to join. There's no charge and you won't be deluged with emails, but our community will be stronger if more people connect this way.

Tapawera on Two Wheels

TTW is a group of locals who ride bikes together monthly in the vicinity of Tapawera. Those who come regularly enjoy the chance to go for a ride with others and enjoy a chat as we get out into some of the picturesque spots around Tapawera. Depending on the route, rides include a free coffee or tea courtesy of Top of the South Neighbourhood Support. Come along and join us!

The rides are publicised in Local Happenings on the tapaweracommunity.nz website. If you would like to know more, please contact me: Gavin 027 757 6665 Email gavin@neighbourhoodsupport.nz.

Ngā mihi

Gavin Scoble, Area Connector| Tapawera & Districts
Top of the South Neighbourhood Support

027 757 6665 Email gavin@neighbourhoodsupport.nz



Tapawera Creative Fibre

Spring has truly sprung, daffodils, calves, lambs and pollen. However the warmer days make the pollen a bit more bearable and brings the promise of summer.

Except for our newest members we have all finished our Kinchaku (Boro) bags, a lot of beautiful work being accomplished in the stitching of said bags. We would have liked to publish our results but due to some issues around the pattern and copyright we thought it best just to blow our own trumpets and say “job well done”. Thanks again to Shirley for her patience and technical skills. Truly appreciated by us all.

Last week we made our first Roadie for the year. We visited the Quilters Barn on Rapaura Road in Marlborough. What a wonderful shop, what a danger to ones wallet (mine anyhow) beautiful fabrics, quilt panels, an impressive array of quilting tools and accessories, as well as helpful, friendly and knowledgeable staff. An added and thoroughly enjoyed bonus was meeting up with Kaye Register and catching up with all her news since we saw her last. Kaye is also on the front cover of last month's Creative Fibre NZ Magazine. Well done Kaye! The restaurant and gift shop also benefitted from our patronage. A very nice place to visit, The Vines on Rapaura Road.

Tuesday night Craft is ticking along very well with new members learning new skills and crafting new creative items for us to admire.

Coming up in October we have a visit to Anne Grassham at Hiwipango. Wakefield Knitting Group are doing a return visit in November, and also in November another social day at the Anchor Restaurant and Bar, followed by a shopping outing in Nelson and Richmond.

By the end of all that we will be heading into presentation of our Group Challenge works then learning about Cricut cutting.

Our Annual Meeting has been held with no changes to the current running of the group. My thanks to Lynda for her work as treasurer and Vicky as Secretary and to the group as a whole for their support.

Our final day is December 13th with our Christmas lunch at Vicky's.

No matter if you spin, sew, knit, do metalwork, woodwork or whatever come and have a yak, a cuppa and some congenial catchup. We are at the Memorial Hall 10am to 3pm on Wednesdays. Or at 10 Totara Street 7pm to 9pm. All welcome.

Stay Safe Folks

Dallas

WADSWORTH MOTORS LTD.

- Coach Charters & Tours
- Mini Bus Hire.
- School Transport
- Professional friendly drivers
- Members of the Bus & Coach Association

Over 100
Years of
Service

wadsworthmotors@extra.co.nz
100 Main Rd, Tapawera
www.wadsworthmotors.co.nz

027 4873167



The Lady Tradie

Has your husband got a **round**



Spring has sprung

and the grass has riz !

Do you wonder where a handyman is ?

Can't get one ?

Then call " Jen the Lady Tradie "

for all your outside spring clean-up jobs

* Gutters full of leaves;

* Lawns that are starting to bolt;

* Waterblasting those slippery paths

and all that spring growth that just might get away on you.

* **Local Person** * **Referees Available** *

Consideration & discount shown towards Senior Citizens

FREE QUOTES

Contact Jennifer

Phone or text: 027 544 2663

After hours/leave a message: 03 522 4453

Email enquiries to: jentheladytradie@gmail.com

TAPAWERA ELECTRICAL

Tony Stephens

Registered Electrician

Ph/fax 5224257

0276249489

All electrical needs

Domestic & Rural

Wiring, faults, some home appliance repairs

New heat pump installations



Free Quotes
Competitively priced



Naralee and I took on the position of Tapawera Youth Coordinators for 2023.

Our goals were to grow and support Rangatahi Explorers, the Tapawera Connect Youth group.

For the past two terms, we have worked hard in identifying the needs and enhancing the well-being of our local youth, from years 7-10.

We made connections and built relationships between youth, parents, coordinators and Tapawera Connect, and are proud to have good systems in place.

Our first event began with celebrating National Youth Week at Shedwood Hall in Tapawera. We had games, kai and karaoke.

Every fortnight during term time, we have run activities such as Flip Out, Ten Pin Bowling, a visit to the Temuera Light Show, Boulder Wall Climbing, Roller Skating, Wave Rave, Illuminate Light Show and Sports evening.

Activity costs and kai from Kainga Kai, Subway, Domino's, KFC or Purpose HQ Cafe were provided thanks to our awesome funding from Lottery Communities.

Over 20 youth have turned up every fortnight, which sometimes demanded adult volunteers. A big thanks to Vicki Smiler, Lisa McGaveston and Jan Barker who assisted in those roles.

A big asset to our team has been Geinty Wells as our main youth volunteer.

She really found her passion working within the team. Geinty always communicates well with the kids and has great rapport with them all.

Our youth have loved "hanging out with their friends" while trying new activities.



We have four more events to complete before the year ends.

The youth have loved roller skating so we will do that again and record and enjoy everyone's improvements.

The rest of the events will be water fun at Nelson Hydroslide, Kaiteriteri and water sport fun in our local awa.



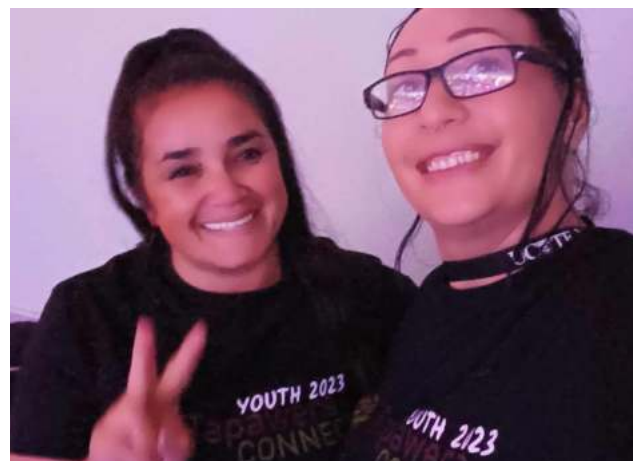
Now that the Youth group is well established, it's time for Naralee and I to continue on other endeavours, opening up the space for 2 new youth coordinators. These roles are 5 hours per week and expressions of interest can be sent through to Phoebe at tapaweraconnect@gmail.com, or pop in to the Op Shop and have a chat with one of the team.

Our last event will be the 1st December 2023.

We have loved sharing experiences with our local youth and look forward to seeing it continue and thrive in the future.

Nga Mihi

Karla Te Tau



Tasman Bay Chiropractic
64 Oxford Street Richmond



Keeping you in the game since 2002

Referrals, families and
all new clients welcome

Visit our website or call for more information

tasmanbaychiropractic.co.nz

03 544 4554

Monday-Saturday

Find us on 



**Tapawera
Playcentre** 

Playcentre Aotearoa is a whānau and predominantly volunteer-based organisation which:

- Empowers whānau and tamariki to work, play, learn and grow together;
- Honours Te Tiriti o Waitangi and celebrates people's uniqueness; and
- Values and affirms parents as the first and best educators for their tamariki, So that whānau are strengthened and communities enriched.

Where can you find us
56 Main Road, Tapawera, 7096

When are we open
Monday's and Thursday's

What are our hour's
10am till 1pm

Contact us
Email: tapawera@playcentre.org.nz
PH : 03 522 4456

"Whānau tupu ngātahi – families growing together"

*Welcome to
our Village*



Tapawera Kindergarten

We are a recently established kindergarten located on Tapawera Area School grounds offering:

- ◆ A curriculum catering to individual child's needs that is community focused, respectful and inclusive
- ◆ 100% qualified and registered teachers
- ◆ Open all year round
- ◆ A smooth transition to school
- ◆ Flexible hours
- ◆ Up to 30 hours of free early childhood education for 2-5 year olds

Tapawera Kindergarten is welcoming new enrolments now.

Stop by and have a chat with our teachers between 9:30am and 2:30pm or call/email for more information.

Open 8.45am—3pm, Monday—Friday
021 0878 8070

tapawerakindergarten@ntk.org.nz
We are located at the end of the Primary block, near the back field.



Up to 30 hours
free 



PRIDE IN OUR TOWN

In the eyes of Laura Fry

How long have you lived around Tapawera and what brought you here?

I grew up here most of my life. My Mum Kirsty Griffith was raised in Kōre on her parents, Ian and Gill Eyles, sheep and beef farm. My Dad, Dave Griffith, was raised in Tadmor by his parents Val and Elaine Griffith. Both sets of grandparents had an impact of different kinds to the area. This history has set deep roots for both my parents and they've never really left. I guess neither have I.



What's your favourite view? How does it impact you?

The Cutting, just by Carlton's place. Driving towards Tapawera, as I look out over the valley, it just feels like a breath of fresh air every time. Fills my lungs with wholesome country air. I'm home.

If you left, what would you miss most about Tapawera?

The Familiarity. The smiles and waves of people I've known all my life as I walk or drive down the street. The memories of people and events at particular places and times of the year. The growing families of people I once knew as kids. and of course my family!



Which is your favourite season and why?

Spring! The smells of blooming flowers, lambs, calves, new life in all its forms! The warmth of the days and the cool nights make for a good balance of outdoor adventure and snuggles at home with my family.



Is there an activity you like to do to connect with other locals? What is it and how often do you participate?

We used to have different social sports during the school terms run by Tapawera Sport and Recreation Society. Basketball was my favourite. The teams would gather to watch the others and cheer them on, the banter was rich, the rules were vague and most of the time it was a lot of laughs. From the young and keen to prove themselves to the older and keen prove they've still got "it"! Teams made from local businesses, families, friends and other community organisations made a diverse and very social event.

Becoming part of the local Fire Brigade, I get to connect with our locals and some travellers on a different level.

Do you have a favourite place to escape and unwind?

As a kid I used to love going down the walking track by the river. There was an awesome swimming hole back then and huge rocks to jump off. Sometimes solitude and listening to the river, birds and my pink mosaic MP3 player was a great way to reflect and unwind. Not much has changed. Except I now can hear the river, birds and my boys from the comforts of our deck.

Is there someone who has made a positive impact on your time living here?

I couldn't possibly pinpoint just one person. So many different people within our community have had an impact on me in some way or another. Outside of my immediate family and friends I would like to specially mention Peter Hall, his Brother Greame aka Bert (May he rest in Love and Happiness) and his family, and his partner Belinda and her family. They are a second family to me. I'll always have an unmeasurable amount of love and respect for them. They've really looked out for me over the years.

The main reason I wanted to join the Fire Brigade in the first place was to give back to all those people who helped me over the years.

Article By: Tamara Eggers
Interviewee: Laura Fry

Providing gentle guidance when you need it most.



Simplicity Funerals

Simply respectful. Simply affordable.



Anna Loach
Manager / Funeral Director
Dip FD Reg. FDANZ

**NELSON & TASMAN WIDE,
WE'RE PART OF YOUR COMMUNITY**

Phone 03 929 5145 | 276b Queen Street, Richmond
nelson.simplicity.co.nz

Purpose HQ Fitness Trust Gym

We wanted to take the time to appreciate and sing the praises of our amazing Chair/Gym Manager and Favourite Local PT. Renee MacDonald Congrats on your new appointment as Club Capability Manager, you will be sorely missed at our kura. But we wish you all the best and are just super happy that you will still be able to get some of those PT's in.

Trust Profile - Karen Jones

Karen has lived in Te Taihū all her life and is dedicated to everything she puts her hand to. She is passionate about Girls/Women's Rugby and the shining star that is her daughter is a testament to that. She sits on many boards and is a valuable member of our Purpose HQ Whānau. Keeping us on track and ordered in our operations we appreciate you and the amazing mahi you do.



Purpose HQ Cafe

As you may have seen we are going from strength to strength at the cafe. We always try to hear what our community wants and so we are now open for Fish n Chips Thursday, Friday, Saturday and Sunday. We are still working on getting our Bike Stand sorted and wanted to give a big shout out to Karen and Bones for helping us out with the design and build of that.



SEED NZ

This month we have the SEED NZ Board coming to town to visit the different projects that we have been working on over the past 12 months. I of course will be showing them around our amazing village and some of the cute spots we have around the takiwa.

Deliveries of logs have tripled for the fire wood bank and there was a nice little write up in The Leader highlighting new partnerships and progress. Thank you again to everyone for all your support.



Purpose HQ and SEED NZ hope to see you all at the Community Hauora Day on the 26th November.



Library News

Term 4 already, unbelievable. Does anyone else feel like the year has just flown by?

We have a fabulous new Richmond Library collection in with a little something for everyone. Come in and check it out.

If you are new to the area and haven't been in yet, then come on by. Membership is free and we have a great selection to choose from. Not only children's books but also a really good adult section, fiction and non-fiction.

We also have magazines, including some healthy eating ones and Consumer magazine.

If anyone has any good quality magazines or books that they would like to donate, then we would be thrilled to take them off your hands.

We are open between 10.30am and 1.30pm, five days a week. If you can't make it in those hours and you are a member, just pop into the office and grab a key. Write the details of the book you have gotten out on the form on the desk and you are all good to go.

We can be found in the building behind the tennis courts.

See you in the library soon

Kelly Russell
Ph 5224337 ext 213

RADIO WITH PICTURES

TAPAWERA AREA SCHOOL PRESENTS

**A FILMED PRODUCTION
WEDNESDAY
1ST OF NOVEMBER
AT 6PM**



**FOLLOW BY
LIVE ENTERTAINMENT
WITH**



ZAC GRIFFITH



**Join us at the premiere
of our filmed
production
“Radio with Pictures”
followed by a BYO
picnic dinner with
entertainment from
Tapawera’s own
Zac Griffith**

PRESENTED BY SHARON SLAY AND RIC RYDER

Polling Day at Tapawera

I was privileged to be a political party scrutineer at the Tapawera polling booth in the school staff room in the morning and early afternoon on election day. It was a GREAT experience seeing so many of our local community flooding in to vote - it emphasised to me what a great community I live in. During the time I was there two queues stretched out the door and back towards the school drive - a great mix of ages from young families with their babies and children, to older people and every age group in between. The atmosphere was happy and friendly, with many apparently catching up with people not seen for a while. The electoral officers Gavin, Jenni and Candace, ever polite, all did a great job of moving people through.

However, the downside - even Fred Dagg would have taken off his gumboots before going into an indoor (carpeted) room. Many, many voters did not, and I found it difficult to remember that as a scrutineer I was not allowed to speak with anyone. I wonder why no-one automatically thought 'gumboots off' before stepping inside? Do they wear their gumboots indoors at home? And if they'd thought, would they be happy to think that the school might have to spend the budget on cleaning the carpet rather than on educating their kids?

Gumboots aside though, observing at the Tapawera polling booth was an inspiring experience. Thanks everyone.

Heather Spence

Motupiko Hall Educational Trust

Invite applications for grants of assistance for educational purposes from people living within the Tapawera Area School catchment area.

Grants are available to assist towards:

- Course Fees
- Cost of living or
- Travel

In the following categories:

- Tertiary education
- Apprenticeships
- Special learning opportunities
- Re-training
- Community education projects

Applications close 31 December 2023

Application forms are available from the school office.

If you require any information please contact:

Susan Ellis 0220 722838



The October meeting was held on a beautiful sunny day at Jeff Lukey's unique garden at Sherry River. It was a good chance for members to appreciate all the hard work that has gone into this garden over the years to make it so special and different. There was also a bush walk to enjoy and honey for sale. The raffles of gladioli bulbs, pansies, chocolate etc, were won by Anne Steele and Mahala White. Our new treasurer is Anne Steele assisted by Francine Currie, and Eve Heritage continues as secretary for now. Irene Griffith is the president.

Our next meeting is at Sue and Geoff Persen's place, 27 Tui Rd, Tui on Thursday 9th November, 11am. Turn from Tapawera onto Tadmor Valley Rd and continue onto Tadmor - Glenhope Rd to Tui crossroads. Turn right onto Tui Rd. There is some parking at the house, but plenty out on the road. There will be an auction and raffle. Please bring lunch, chair and cup. The urn will be there. Sue and Geoff have an interesting, extensive country garden well worth a visit.

The annual Motueka Garden Trail is on the weekend of 4-5 November. The cost is advertised this year at \$30 for the 2 days but it is well worth it with a large selection of town and country gardens to visit. Tickets have been available previously at Mitre 10 and Potters Patch Motueka, or otherwise on the day at the Toy Library, Pah St, Motueka. A friend and I always buy our tickets at the Toy Library on the day and then work out our itinerary as we sample the yummy home baking that is for sale.

Happy Gardening

Shirley Percy

*An informal gathering to remember **Trish Meade**, who passed away in May, will be held on the afternoon of Sunday, December 3rd.*

Please join us for a cup of tea and share your memories anytime during the afternoon at 44 Hewitt Road.



OP SHOP VOLUNTEERS NEEDED!!

Are you available on either
a Mon, Wed, or Fri 10-3? I
would love to hear from
you! Without help the op
shop will close again!!!

Please text Nicola on
0212506232 or FB message
the 'op shop'



RURAL MUMS STEP INTO SPRING FAMILY FUN DAY

The rain tried to stay away for our Family Fun Day but couldn't resist giving us a few (well needed) showers. With a small crowd, this event was full of community spirit with an amazing walk around the village and an informative talk with the Breast Cancer girls, then finishing it off with a kiwi snack of sausage in bread and a sing-a-long by the wonderful and talented Kath Bee.

Huge thanks to our sponsors and helpers for this event:

- Tapawera Connect
- Rata Foundation and Internal Affairs
- Kath Bee
- Breast Cancer Caravan
- Rural Mums Tapawera
- Friends of Tapawera School for the amazing baking and coffee
- Farmlands, Domino's, Tapawera Four Square, Molly's Coffee and Purpose HQ Cafe for their spot prize sponsorship

We will be looking at running this event again next year - would be great to see the community come along and be involved.



From the Principal's Desk

Tēnā koutou e te Whānau ki te Kura o Tapawera

Tēnā koutou e te Whānau ki te Kura o Tapawera We are at the end of another term. The year is going fast. We hope you enjoyed the school holidays with your children and relax ready for a busy last term of year.

Help shape the future of our school. Please complete our survey around our strategic goals and local curriculum. The survey is one way we will be consulting to get your voice to form our new strategic plan and local curriculum development. Please have your say by completing the questions by Friday 20th October By filling out the survey you go into the draw to win a \$100 grocery voucher! Follow the link: https://docs.google.com/forms/d/e/1FAIpQLSeQPwcNAu9toAVeGmBRy5VJZMLAB_CR9IZQ1hFuFwqtD5RkCw/viewform?usp=sharing

As well as the survey we are planning hui with whānau to discuss our goals and curriculum in term 4. Dates will come out early next term.

Student Wellbeing Survey We are currently undertaking a self-review to explore how different layers of school life contribute to creating a safe and caring climate that deters bullying. The aim of the review process is to support us in engaging in an ongoing journey towards building inclusive practices for all learners. Students from years 5-13 are currently completing an online survey to have their say on school-wide climate and practices relating to: Teaching and Learning Community partnerships Prosocial student culture and Strategies Aggressive student culture. This information will support our strategic goal setting and local curriculum work as well as support to ensure a safe environment for all students. We will share the results of this survey mid-term four with you. Thank you for your ongoing support and aroha for our kura.

Sarah Coard

Principal

principal@tapawera.school.nz

Other School News

Uniforms for Tapawera Area School are available online. Search Schooltex uniforms and type Tapawera Area School in the search tab.

A group of Year 11 Outdoor Ed students plus a couple of guests rafted on the Owen River this week. There was nervous laughter, uncomfortable stretching of wet suits and swatting of sand flies as they listened to the safety briefing and split into three rafting groups to take on the challenge. They had amazing blue skies as they pushed off into the sparkling white water at the Owen domain for a couple of hours paddling alongside Marlborough Girls College.

Shakaia MacDonald and Tamati Bright just went on the Spirit of Adventure, the first ones for a few years in and out of Auckland.



Shakaia MacDonald, left



Tamati Bright, left, looking left



Year 9 & 10 Camp with Rai Valley Area School, up the top of Lake Rotoiti on their overnight camp



Tapawera School and Community Garden 'Te Māra a Tapawera'

We would like to thank 'Tree Crops' and in particular acknowledge Steve Udy and Lizzie O'Donnel from 'Waimea Nurseries' for organising these beautiful plants and arranging their drop off to the garden. 'Tree Crops' donated two pears, a plum, a peach and some feijoa trees and some of these trees have just come into flower which is great to see with the bees at work in our garden and all the trees are doing well. 'Waimea Nurseries' donated several feijoas, a boysenberry, an orange, a lemon and four blueberry bushes. The blueberries are coming into flower very soon and we will be sure to protect the citrus over the winter from the Tapawera frosts. Also a big thank you to 'Gizz and Di' for donating heaps of strawberry and raspberry plants. All of these fruiting trees and plants keep adding to the garden and as they mature in turn give delicious fruit to our tamariki and whānau (community). A special thanks to Flynn, Levi B and Todd for wheelbarrowing mulch to the trees and digging and planting the trees. To Alison Oldham for donating horse manure and bulbs, Nicola Allen for donating wool fleece and Lizzie for donating hops mulch. We really appreciate all of these donations and we couldn't do the mahi without your generous help. Many hands make light work!

Whaea Denise Shellock

Tapawera Area Skool Loop

Anyone from the Community can join up as the fortnightly newsletter can be found here



Tapawera Area School Facebook

Follow us to catch up with happenings that are posted usually 3-4 times a week



Tapawera Area School

Prize Giving Tuesday 12th December 7 pm sharp
The Rivers, the school magazine handed out to all seniors Yr 11 up on Prize Giving night and the rest of the school on the last day.

The last day of school is **Wednesday 13th December, 11 am Last Assembly**, buses leave at 12 noon.

Friends and family are welcome to both events.

as told by Susan Fenemor



Kia Ora Tapawera and our Tamariki,

Come down and have your say at our AGM meeting coming up on Wednesday the 22nd of November at 7pm at the Tapawera Memorial Hall. We still have a great variety of toys available for our children to build their creativity and to explore. Since it is starting to become warmer we have water play activities available, board games for the family, outdoor activities, ride on cars, Duplo lego, toys for infants and toddlers, heaps of toys and more for kids to build their imagination. So come down and see what we have available!.

Hours have now changed for November, we will be open on Monday mornings!! 10:30-11:30am or head onto our Facebook page and message us on Messenger or contact Jan: 0273915424 and we can open at any other time just for you! :).

COME TO A TALKING CAFÉ

Connect with your community

Talking Cafés are an opportunity to meet people, make new connections and learn more about your community.

Pop in for a quick cuppa, or stay for a longer conversation with friendly people. All welcome, no bookings required.

Upcoming Tapawera Talking Cafés
Purpose HQ Cafe (outside tables) or Tapawera Community Centre if inclement weather.
Tuesday 14th November, 10-11.30 am
Tuesday 12th December, 10-11.30 am

For more details:
wellby.org.nz
or phone (03) 546 7681

Book Discussion Group

Meet: 4th Thursday in month, 10am
 Contact: Paula Davis ph. 5224341

Federated Farmers

Contact: Harry Matthews - Field Rep -
 0275078901

Golden Bush Garden Club

Meet: 2nd Thursday of month
 Contact: President, Irene Griffith
 0212525098, or Shirley Percy 5224924

Golf

Meet: every Sunday, Ladies 9 hole
 every Tuesday
 Contact: Gary Oldham ph. 0278080578

Historical Society

Contact: Barbara Carleton ph. 5224317

Informer

PO Box 15 Tapawera
 Email tapawerainformergmail.com

Justice of The Peace

Peter Phillips ph. 5224313
 John Ellis ph. 021 522429
 Brent Hodgkinson ph. 5224381
 Francine Currie ph. 5224245
 Susan Fenemor ph. 0275224009 (text
 during school hours)

MENZSHED

Contact: John Wilmshurst ph. 5224616

Neighbourhood Support

Contact: Gavin Scoble
 ph. 5224585 or 027 7576665
 Email gavin@neighbourhoodsupport.nz

Netball

Contact: Susan Fenemor ph.
 0275224009 (text during school hours)

Ramblers

Meet: each month
 Contact: Shirley Percy ph. 5224924

Shedwood Hall bookings

Contact: Tania Higgins ph. 5224587

St Andrews Church Stanley Brook

Services every Sunday. Cup of tea
 afterwards.
 Contact: Lee Winter ph. 5224160

St John – Tapawera

For emergencies Dial 111,
 Email info@stjohn.org.nz

Tapawera & Dist. Community Church

Service: St. Peter's Tapawera. 2nd
 Sunday of each month at 3pm
 Contact: Church Office 03 541 8883
 Vicar: Rev. Don Moses ph. 541 8883

Tapawera & Dist. Community Council

Meetings: 3rd Tuesday of month,
 7:30pm Tapawera Community Centre

Tapawera Community Centre

Lisa Carleton ph.0274461017

Tapawera Connect

Contact: Phoebe Quinlivan ph. 021 211
 6730 or 522 4929, email:
tapaweraconnect@gmail.com

Tapawera Creative Fibre

Meet: every Wednesdays, Memorial Hall
 Contact: Dallas Robinson ph. 5224984

Tapawera Food Bank

Contact: Suzzi Lankshear ph.
 0277491063

Tapawera Jujutsu Club

Contact: Tony Hammersley ph. 5224609

Tapawera Music/Country Music Club

Meet: Alternate Sundays, Tapawera
 Hotel 7:30pm
 Contact: Elaine Douglas ph. 5418612

Tapawera Op Shop

Contact: Lisa Carleton ph.0274461017

Tapawera Playcentre

Meet: Mon & Thur, 10am -12:30pm
 Memorial Hall ph. 5224456

Tapawera Rugby Football Club

Bookings: ph. Judy Benjamin 5224445

Tapawera Sport & Recreation Society

Contact: Judy Benjamin ph. 5224445

Tapawera Volunteer Fire Brigade

Contact: Dean Millar Chief ph.
 0279651399; Ted Oakly Deputy Chief
 ph. 0210704033

TAS / Community Library

Mon-Fri 10:30am-1:30pm. Contact:
 Lareen Bonnington ph. 5224149
 Library ph. 5224337/ext. 213

TESSI

Contact: Bruce Whyte ph. 5224550

Toy Library

Open Thursday 10:30am-11:30am
 Contact: Jan ph. 5224102

Visual Arts Society Tapawera

Contact: Dallas Robinson ph. 5224984

Wakefield Police

Constable Jamie White –
jamie.white2@police.govt.nz
 Constable Matthew Berquist –
matthew.berquist@police.govt.nz
 Non Urgent (CRL) – Call 105
 Happening Now – Call 111

**What's on
November**

- 1 TAS production, followed by
Zac Griffith, 6pm
- 9 Garden Club, 27 Tui Road, Tui,
11am
- 11 Draft Community Plan Drop-in
sessions - see page 6 for
details
- 11-13 Garden open, 27 Umukuri
Road, Riwaka, 10am-4pm
- 14 Tapawera Talking Café, 10-
11:30am, Purpose HQ Café or
Community Centre if wet
- 14 Digi Drop-in, Community
Centre, 11am-1pm
- 15 Feedback on Draft Community
Plan closes
- 20 Articles for Informer close 5pm
- 21 TDCC monthly meeting,
Community Centre, 7pm
- 26 Community Hauora Day
- 28 Tea and Talk, Janeen
Leeden's, 11am - 1pm

**GP & Nurse at
Tapawera Clinic**

(during school term time):

GP clinics – Mondays
 9am – 12 midday

Nurse clinic – alternate
 Tuesday mornings - phone
 541 8911 for dates

* *Do you have an event you
 would like listed in What's On?*

* *Or a community group or
 organisation you would like
 included in the directory?*

If so, please email
tapawerainformergmail.com



COMMUNITY VISION: Tapawera and Surrounding Valleys is a Caring and Resilient Community. Caring for one another. Building a sustainable future. Guardians of our mountains and rivers. Growing in a way that values our heritage.

Tapawera Draft Community Plan

Our community plan is important for the people of Tapawera as it will reflect our vision, priorities and values. It is the result of many conversations that have taken place over the past eight years, reflecting the community's voice. We now want to transform these ideas into successful projects that will bring about positive changes in our community, and we want you to have a say about which projects and ideas are the most important to you and to the Tapawera community. Let's work together to achieve our goals and make Tapawera an even better place to live.



The Tapawera Connect team is facilitating the community planning process and will ensure that the community of Tapawera is involved at every step.

Have your say - Feedback closes 15 Nov

We want to hear from you about which projects and ideas are the most important to you and for the Tapawera community. Many of the projects in the community plan will be locally decided and resourced. Other projects may involve funding and prioritising from the Tasman District Council and external agencies such as Waka Kotahi and the Department of Conservation.

For a more comprehensive look at ideas put forward over the years by the community, and to see what's already happening in Tapawera, please go to: www.tapaweracommunity.nz/communityplan

We are Caring & Connected



Ideas

- A community hub with multi-use spaces, a drop-in space, an information centre & a hub coordinator
- Housing for seniors
- Social & support groups for seniors, youth & families
- Better access to information including Tapawera community website, Facebook, & the Informer



Please tick the first box if you support a recommendation, and then indicate what priority it should have - High, Medium or Low.



Recommendations

1. A Community Hub for Tapawera (a feasibility study is currently underway)

2. Advocate for increased housing for seniors

High Medium Low

We are Building a Sustainable & Resilient Community



Ideas

- Strengthened emergency preparedness & response
- Encourage more locals to grow their own food
- Robust power & communication networks
- Increase our biodiversity with more planting
- Increased community connection

Recommendations

1. Support the growth of local food networks to increase food resilience in Tapawera, including the sharing and sale of local produce

2. Facilitate development of a Tapawera community preparedness plan

3. Advocate for a more robust power network & improved telecommunications

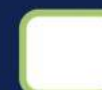
4. Support for community planting including fruit trees & a pollination pathway to the river

5. Support Māra Wera School & Community Garden

6. Support local businesses in exploring opportunities to develop economic stability & local employment

7. Investigate flexible, affordable & accessible community transport

High Medium Low



We are Active & Healthy



Ideas

- Increased health services with an holistic approach
- Increased sport & recreation activities
- Develop Tapawera as a cycling hub including more off-road trails
- Covering & heating the pool
- Promote Shedwood Bush

Recommendations



High Medium Low

1. Advocate for increased health services including family & mental health

2. Investigate the cycling hub concept and the feasibility of more off-road trails

3. Investigate the covering and heating of the pool

4. Promote Shedwood Bush and other local recreational areas

We are Proud of our Community



Ideas

- A village plan that enhances the village & environs to be more attractive & safe
- History of Tapawera walks & talks
- Keep historical character of village
- Landscaping the river route including a recreational area
- More artwork & signage
- More events & celebrations

Recommendations



1. Facilitate the development of a comprehensive village & environs plan

2. Facilitate the development of an annual event/celebration for Tapawera

3. Support other smaller events throughout the year

4. Support the landscaping of the river route, including a recreational area

High Medium Low

We are Guardians of our Mountains & Rivers



Ideas

- Improved & safe access local access to Kahurangi National Park
- Encourage people to become guardians of our environment
- Protect our local environment & wildlife

Recommendations



High Medium Low

1. Support efforts to improve safe access to Kahurangi National Park over the Dart River

<input type="checkbox"/>	<input type="checkbox"/>	<input type="checkbox"/>	<input type="checkbox"/>
--------------------------	--------------------------	--------------------------	--------------------------

2. Support for environmental programmes with our local school

<input type="checkbox"/>	<input type="checkbox"/>	<input type="checkbox"/>	<input type="checkbox"/>
--------------------------	--------------------------	--------------------------	--------------------------

3. Support a project to promote & safeguard the ecological significance of birdlife on the semi-braided section of the Motueka River

<input type="checkbox"/>	<input type="checkbox"/>	<input type="checkbox"/>	<input type="checkbox"/>
--------------------------	--------------------------	--------------------------	--------------------------

Any other Feedback?

Thank you for responding to the draft Tapawera Community Plan. To assess whether we are getting feedback from a broad range of community members can you please indicate:

Your age: 0-20 21-40 41-60 60+ (Circle)

Your ethnicity: Pakeha Maori Other _____

Your gender: Male Female

Another Gender _____

Your feedback is anonymous