

**Tapawera and Districts Community Council (TDCC) Orientation and Member Nominations**

TDCC remains busy and engaged working on local events and issues. Our monthly meetings continue to be held on the 3rd Tuesday of each month (bar January) and are open to all.

The Community Council has been representing local interests with TDC and supporting local community groups in a number of ways over the past year. Funding grants have been provided to the Tapawera Area School, the Menzshed, Purpose HQ Café and the Golf Club. As a result we now have improved seating at the café, a wonderful new village sign and students better able to represent the school and area in sporting events. We have engaged with the Council on the proposed long term plan and priorities for the Tapawera area. We continue to work closely with Tapawera Connect and the Community Led Development Programme to formulate a Community Plan and assess the need for a new Community Hub. With support from TDC the community centre is now equipped to convene video conferencing and even show films.

I am sure you will all join us in thanking our wonderful Tapawera Informer editor – Gill Hammersley in continuing to produce this fine publication on behalf of our community and TDCC.

We would also like to thank Kainga Kai Catering for organising the Tapawera Matariki Festival on July 14th. What a wonderful event and that Hangi food was oh, so good. The pudding was to die for!!! If you missed it, we hope there will be future opportunities to sample their support and enthusiasm.

Unfortunately, the OpShop has had to be temporarily closed whilst we upgrade the interior of the community

centre but we all look forward to a leaner and more effective OpShop opening soon. We are relying on volunteers to help upgrade the Community Centre and OpShop rooms so if you have painting, floor laying or cleaning skills and want to help out, please do get in touch via [TapaweraTDCC@gmail.com](mailto:TapaweraTDCC@gmail.com)

**Finding out about TDCC ....a Coffee Morning on Thursday 3rd August.**

If you would like to hear more about how TDCC operates, what it does and why then come along to join some members in the Community Centre at 10:30am on Thursday 3rd August. We will provide hot drinks and cookies to all who come.

**Joining TDCC**

If you would like to join the TDCC, and are over 18 years of age, please do fill out the nomination form in this Informer. You can decide to represent one of the geographical areas noted on the application form or put your name forward as an office bearer (Chairperson, Secretary or Treasurer).

Nominations need to be submitted by 5pm on Friday 6th Sept. 2023.

As a member of the TDCC you attend its monthly meetings, have the opportunity to influence the decisions made during those meetings and make a difference for the whole community.

TDCC's next meeting will be on Tuesday the 15th of August at 7:00pm in the Community Centre.

**Notice of AGM**

Please note that TDCC's AGM will take place on Tuesday September 19th in the Community Centre at 7 pm. All are welcome.

**GRANTS OPEN**

**The Peter Malone Community Grants Scheme is now open for applications**

Applications are now open for grant applications from individuals or organisations whose members are predominantly electricity consumers in the Network Tasman district.

Online applications can be completed at [www.networktasmantrustgrants.org.nz](http://www.networktasmantrustgrants.org.nz) or you can download and complete a hardcopy application form and post to P.O. Box 3164, Richmond 7050. Details of eligibility criteria are available online.

Applications must be received by **FRIDAY 25 AUGUST 2023, 5.00 PM.**

# COME TO A TALKING CAFÉ

Connect with your community



Talking Cafés are an opportunity to meet people, make new connections and learn more about your community.

Pop in for a quick cuppa, or stay for a longer conversation with friendly people. All welcome, no bookings required.

Upcoming Tapawera Talking Cafés  
Tapawera Community Centre  
Tuesday 8th August, 10-11.30 am  
Tuesday 12th September, 10-11.30 am  
Tuesday 10th October, 10 - 11.30 am

For more details:  
wellby.org.nz  
or phone (03) 546 7681



## Tasman Bay Chiropractic 64 Oxford Street Richmond



*Keeping you in the game since 2002*

Referrals, families and  
all new clients welcome

Visit our website or call for more information

[tasmanbaychiropractic.co.nz](http://tasmanbaychiropractic.co.nz)

03 544 4554

Monday-Saturday

Find us on 



### RURAL POST, RD 2 Wakefield

Contact Nick & Jackie Costley for all your RD 2 Wakefield postal needs.

Including prepaid envelopes, stamps, courier items and local freight from Wakefield, Dovedale and Tapawera. Prescriptions from Wakefield.

**Phone 0275418581**

Mark & Tania Gill  
T/A MTJ Transport  
RD2, Nelson  
NZ Post Rural Contractors  
Servicing  
Motupiko-Korere-Kikiwa-Tophouse-St Arnaud-Glenhope

For all your Postage, Milk & Courier Freight  
Operating 3 Days Weekly  
(Monday-Wednesday-Friday)  
Departing Nelson 8.00am  
Phone 546 6295

### Material & adverts for Informer

All material is to be sent to either:

Informer, PO Box 15, Tapawera, 7055  
or email- [tapawerainform@gmail.com](mailto:tapawerainform@gmail.com)

To be received by 5pm  
20th of the Month

If emailing a word document please send in Word as an attachment.

If sending an advert please save as a jpeg before sending.

Please check your emails to see your article/advert has been received as sometimes there needs to be alterations.

#### Advertising rates for Informer

Standard advertisement	
1/4 page advert	\$25
1/2 page advert	\$35
Full page advert	\$50

Adverts that require editing may cost extra

The Informer is produced and published by the Tapawera and Districts Community Council, PO Box 15, Tapawera, 7055;  
email: [tapawerainform@gmail.com](mailto:tapawerainform@gmail.com)  
Circulation 635  
Editor: Gill Hammersley  
The Editor and Publisher try to ensure information published is truthful

and accurate, but do not accept any responsibility for errors or omissions, or for any consequences of readers' relying on the information published. Opinions expressed by contributors may or may not be endorsed by the Editor or Publisher.  
All material submitted, whether editorial or advertising, is accepted at the discretion of the Editor and the Publisher.

## Tapawera Community-Led Development Coordinator News

They say when opportunities to do what you love come 'knocking', then grab them with open arms! When I heard Tapawera Connect were looking for a person to fill a new role as Community-Led Development Coordinator, I knew this was one of those opportunities.

Having been brought up on the family farm in Upper Stanley Brook, parents Geraldine and John (or Jack) as most know him, my two sisters Karen and Lisa, myself and my three children all attending Tapawera school (with Jeff Waddy still the friendly bus driver!) working in and currently living in the Tapawera area, I felt I had a pretty good grounding on the Tapawera Community and how 'things' historically have worked. The chance to support and encourage new initiatives within the community by locals, creating an even better Tapawera now and for future generations really excites me! As a small business owner, and part time "off the property" worker, I recognise the many different living/working situations we find ourselves in in small rural towns. We are all so unique in our own environments, and the CDLP program endeavours to encourage and empower each and every one of us. Some of you may remember, our lovely Rachel Hunter in the Pantene shampoo ads once saying, "It won't happen overnight, but it will happen"! This sentiment is what the CDLP or Community Led Development Programme is all about. We are all about connecting the diverse sectors of



our community, creating visions and goals that matter to everyone, building resilience and sustainability for the future and above all else "seeing and valuing" every person that makes up this great rural town. My aim is to be transparent and approachable, whilst representing Tapawera Connect in this role. I'm always open to friendly discussion and great ideas, and if it's a question I don't have the answer for straight away, you can rest assured I will find it and get straight back to you! I would like to leave you with this short verse from the CDLP workbook (that I'm wading through lol) as I think it encompasses the program's vision beautifully.

"Sometimes the waters are clear and smooth and you get to just go with the flow and let the awa guide you. Occasionally you hit some rapids and you need to hold tight and negotiate your way through them, then realign and readjust. Every so often you might hit a rock and once in a while you might need to ask for a life raft. All these challenges enrich the journey and make you grateful for the strong waka and the people riding it with you."

(Waimamaku, Community Led Development Partners Hui 2019)

Warm regards Nicola Allan



## Golden Bush Garden Club

The July meeting was held at Riverhaven Restaurant, Ngatimoti. It was a good turnout in lovely surroundings, complete with mid-winter Christmas decorations. After enjoying our yummy individual food platters we had a spirited plant auction. The four raffles, two of plants and bird feeders and two hand made bags, were won by Sue, Janine, Sandra and Cynthia.

Next month's meeting, which is also the AGM, will be held Thursday August 10th at Shedwood Hall, Tapawera, at 11am. Please bring a plate of finger food for a shared lunch, plus a cup. There will be an auction and a raffle.

We do need the positions of Secretary and Treasurer to be filled, and a few more people to go onto the committee wouldn't go amiss. Our club has been quite active but we do need new people with new ideas.

Joel Briffault from Crafted Earth Nursery, Motueka Valley, will be there to give a talk. He specialises in perennials, organic vegetables, herbs and medicinals, ornamentals and also runs propagation workshops so should be very interesting to listen to, and also to answer any questions.

Spring is certainly on its way - saw the first daffodils and jonquils out in the village the other day.

Happy Gardening

Shirley

# Tapawera Playcentre



**Our village becomes your village at playcentre**

**Fun and friendship for you and your children and endless experiences that lasts a lifetime!**

Playcentre is unlike any other early childhood education organisation.

At Playcentre, both children and their parents / caregivers attend.

Your child will be given a chance to explore, create, climb, read, sing, experiment, play music, wear costumes, have their face painted (or do it themselves!), garden, do carpentry with real tools, bake and cook, build sandcastles, swing, slide, dance, spend time in nature  
get messy and so much more.

We welcome families with children aged 0 – 6 years. Mixed age play allows your children to engage with others older and younger than themselves. Pre-schoolers learn how to communicate, share and negotiate with empathy for their younger peers.

At Playcentre, families come together and lifelong friendships are formed.

**We welcome you to visit any time during the year  
we would love to meet you and your family!**

**Our opening hours are: 10am to 1pm Monday's and Thursday's during term time.**

**You can find us at: 56 Main Rd, Tapawera 7096**

Feel free to contact us on [03 522 4456](tel:035224456) if you have any questions.

Or contact us through the website <https://www.playcentre.org.nz/centre/tapawera/>

*Welcome to  
our Village*



**“Whānau tupu ngātahi – families growing together”**



## Tapawera Netball Club July News



**Tapawera Blue Rock Hops** had a win against Rivals Jade. Some really good connections throughout the court, final score 34-27. POD Emma Bannister. We then had a tough challenge physically and mentally

against Marist on the Sunday. It was close throughout but unfortunately lost 23-27. POD Talia Manson for her consistency. Princes Kahurangi was the last game for Round 2. A slow start saw us having to push to the next level. We had chances to level the score but unable to secure the lead saw us losing 28- 25. POD Josie Orr.

We now start Round 3 and with some close games aim to push through as a team to try and win the round. Thank you to our supporters and sponsors.

Emma Bannister & Renee MacDonald  
Coach/Manager



Defending in circle Josie from Tapawera Blue Rock Hops

**Tapawera Hop Bar Hotel** played Waimea. With wet conditions and slippery ball it was a slow start but every player played outstanding throughout the game. Excellent feeds great defence good driving and shooting. Winning 24-10. POD Caitlin Newport. The next game was against Waimea College. We secured a good lead in the first quarter and managed to keep it throughout the game. Great defence and excellent shooting meant they took the win 27-18 POD Katie Hicks.

One more game in this round and then semis with the hope of making the finals. Keep up the great work and energy. Thank you to supporters and sponsors.  
Emma Bannister Coach  
Renee MacDonald Manager

### Tapawera Combined

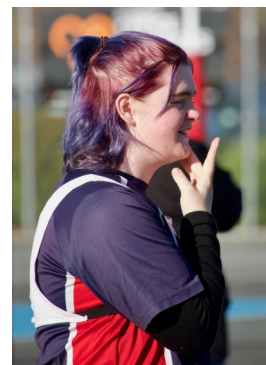
24/6/23

Tap Combined played Rai today and enjoyed the great sportsmanship that they brought. Down two players today so Rai helped us out which was amazing. Once again the team fought hard and kept improving and POD was Brooke who played GD and GK in the first quarter and threw everything at it! We didn't get the win, 25-10 but enjoyed

playing the Rai team and had a great time.

1/7/23

Tapawera Combined played NCG today. It was an amazing game to watch with our team not giving up and having a lot of interceptions throughout the court and driving to the ball. Our final score was 13-22 to NCG, however, the score didn't matter as we as a team have come together and are working better each week and it shows. With a new player from Rai Valley, our team has now grown to 8. Welcome Skyla to the team we are extremely happy to have you. Player of the day went to Cameron for stepping up today and having a go in GS/GA and doing amazing, as we were down a player today, but the whole team did amazing, Ali and myself are very proud of you all.



Cameron a pensive captain from Tapawera Combined

16/7/23

After 2 weeks off for school holidays Tapawera combined will start training again this following week and look forward to coming back as a whole team again with our first game back on the 22/7/23.

Aleisha Oakly Coach

**Tapawera White** has played two games in their new grade, Junior 7. It has been a really big change for the girls as the game format changes from 6 a-side to 7 a-side full netball. Regardless of the challenge presented, the team has stepped up and played to their best in the new positions. Having won the first game with less of a gap in the score it was clear they are much better suited for a higher grade, however in the second game they played we unfortunately lost. This is not a true reflection of how they are playing as, from the sidelines and training, it is obvious they are constantly increasing and improving their skills. With only five more games in the season, I am excited to see them play in this grade.

Rosa Cameron Coach

We have a **Tapawera Netball Club Facebook** page, so "like" and "follow us." This social media platform will give up-to-date information on how the teams progress.

### Prize Giving 27<sup>th</sup> August 2 pm TAS

Bring prepared finger food for afternoon tea - School kitchen, Prize Giving - Music Room  
Clean uniforms brought to the event

Yours in Netball  
Susan Fenemor  
President/Life Member



**VOLTZ**  
ELECTRICAL LTD

**Julian McGaveston**  
*Registered Electrician*

For all your domestic, commercial  
and rural electrical needs.

T: (03) 522 4488  
M: 021 566 645  
F: (03) 522 4698

E: [voltzelectrical@silkweb.net.nz](mailto:voltzelectrical@silkweb.net.nz)

2227 Wakefield Kohatu Hwy. RD2. Wakefield 7096



TOWN & COUNTRY  
**VET**

*"...for all creatures great & small..."*

**Regular Tapawera visits  
discounted mileage  
T&Cs apply**

**Ph 544 1200**

[info@tcvet.co.nz](mailto:info@tcvet.co.nz) \* [www.tcvet.co.nz](http://www.tcvet.co.nz)

**25 Edward Street, Wakefield  
35 McGlashen Avenue, Richmond**

**24 hour emergency vet**




# Tapawera Kindergarten

We are a recently established kindergarten located on Tapawera Area School grounds offering:

- ◆ A curriculum catering to individual child's needs that is community focused, respectful and inclusive
- ◆ 100% qualified and registered teachers
- ◆ Open all year round
- ◆ A smooth transition to school
- ◆ Flexible hours
- ◆ Up to 30 hours of free early childhood education for 2-5 year olds

Tapawera Kindergarten is welcoming new enrolments now.

Stop by and have a chat with our teachers between 9:30am and 2:30pm or call/email for more information.

Open 8.45am—3pm, Monday—Friday  
021 0878 8070

[tapawerakindergarten@ntk.org.nz](mailto:tapawerakindergarten@ntk.org.nz)

We are located at the end of the Primary block, near the back field.



Up to 30 hours  
**free**




## **TAPAWERA DISTRICT COMMUNITY COUNCIL INC.**

### **Notice and request for nominations of Council Members**

Tapawera and Districts Community Council (TDCC) member nominations happen every two years. The 2023 TDCC is seeking 12 people - three office holders and nine area representatives.

The representatives include the following 'sub-districts' or areas:-

- Two from Main Road Tapawera/Tapawera Village
- One from Stanley Brook/Hinetai Road area
- One from Glenrae/Lower Wangapeka/Baton area
- One from Matariki/Sherry River/Upper Wangapeka area
- One from Rakau/Tadmor area
- One from Kiwi/Tui/Kaka area
- One from Kohatu/Golden Downs/Kikiwa area
- One from Korere/Motupiko/Atapo area

Nominations are requested for the 3 office bearers

- i. Chairman
- ii. Secretary
- iii. Treasurer

Should there be more than one (or in the case of Tapawera Village - two) nominations for any given area or office then an election may be called. This rarely happens as normally the TDCC is under resourced in terms of volunteers and office bearers.

Please consider representing your area and assisting in the management of the community council. Key roles of the Council include presenting and advocating residents and rate payers interests to Tasman District Council and other decision making bodies on any issue affecting our area, managing the Community Centre, the OpShop and the Tapawera Informer, applying for and allocating grants as necessary and coordinating with other community groups in Tapawera plus other residents associations. The TDCC also has the capacity to instigate new development projects for this area.

We have a lively and dedicated team at the moment and lots happening in the area with the Community Led Development Programme facilitated by Tapawera Connect and the newly launched Motueka Catchment Collective.

All you have to do is fill in the nomination form, included in this edition of the Informer and get a couple of people to nominate you – simple! Nomination forms should arrive on or before 5:00 PM on the 6<sup>th</sup> of September 2023. New members will start at the TDCC AGM which will be convened at 7pm on September 19<sup>th</sup> 2023. All are welcome to attend the AGM.

If you have any queries, please email [TapaweraTDCC@gmail.com](mailto:TapaweraTDCC@gmail.com) or come along to TDCC's next two meetings on Tuesday the 18<sup>th</sup> of July or Tuesday the 15<sup>th</sup> August at 7:00pm in the Community Centre.

**TAPAWERA & DISTRICT COMMUNITY COUNCIL INC.**

**NOMINATION FORM**

For the election of sub-district area representatives and executive officers to the above council effective from Tuesday the 19<sup>th</sup> September 2023 for a two year term

- In the case of area reps, nominees and nominators must be resident in the sub-district in which they reside.
- Be a registered voter as per the Tasman District council electoral roll and 18 years of age or older.
- Nominations for the position of Chairperson, Secretary, or Treasurer are invited from across the district.

NAME OF NOMINEE (full name) .....

ADDRESS .....

Phone number .....

Signed .....

**Representing Sub-District / Area** .....

or

**Office Bearer** .....

Nominated by .....

Address .....

Signed .....

Seconded by .....

Address .....

Signed .....

Completed nomination forms should be posted to:

The Returning Officer

*Tapawera & Districts Community Council*

*P. O. Box 15, Tapawera*

***Forms to be received no later than 5pm, Friday 6<sup>th</sup> September 2023***

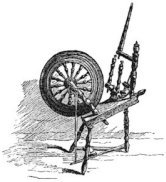
Nominations received after that date will be invalid

One nomination per page, additional copies are available on request to

[TapaweraTDCC@gmail.com](mailto:TapaweraTDCC@gmail.com)

Susan Ellis, Returning Officer





## Tapawera Creative Fibre July 23

This last month has been a great time for crafting, weatherwise, we have had it all, frost, rain, warm sun, windy days and of course cold temperatures, the best time to be inside creating.

The group recently took part in a workshop run by Irene who taught us the basics of macrame, a very well run, informative workshop with the pleasing result that we all finished our projects, even yours truly who struggles sometimes to complete what she starts.

Last week we made our start on Boro bags with Shirley, now bags tend to be my thing, however this is a vastly different construction method, a new way of thinking about fabric scraps (stash), no neatening of edges and straight stick and stab stitch, we do get to use our sewing machines to construct the inside of the bags, hopefully in the next issue of Informer we will have some photos to publish. Many thanks to Shirley for a superbly organised workshop, very relaxed and a totally no pressure day. A product I have heard of recently would seem to be a master fix for this type of project. Water soluble thread for basting, I will be checking that out soon.



A little hard to see all the basting stitches, believe me they are there.

Whether you knit, spin, sew, crochet, make lace, cross stitch or felt, you are welcome to come and see what we do. There may be something you would like to learn, if so we have a large amount of expertise for a small group. We meet each Wednesday at the Memorial Hall at 10am and Tuesday evenings at 10 Totara St 7pm.

Dallas Robinson



## From the Library

A new term at school and the library is open again. We look forward to more new members joining us. I say this because we are getting a trickle of new people coming in. I think I can safely say that they are pleasantly surprised by what they find here.

Plenty of books for the under fives, loads of picture books, so many junior and intermediate books and the young adult books make great reading for adults as well. The adult section has something for everyone and our non-fiction and reference sections have to be seen to believe how good they are. Not convinced yet? Then come and see for yourself.

It is a bit harder with our hours now being 10.30-1.30 but members can obtain a key from the office during normal school hours and just need to leave their details at the desk.

You can see our whole catalogue on our website [nz.accessit.online/TPW00](https://nz.accessit.online/TPW00) (last two digits are zeros), you can also see your own issues or your children's just by asking us for your membership numbers .

Thank you to our lovely members who donate their books to us, we actually wouldn't have an adult fiction collection without you, as it is, we have over two thousand books in this collection.

You can find us behind the tennis courts at the school. Our hours and web address are as above.

You can phone us on 5224337ex213 or email [library@tapawera.school.nz](mailto:library@tapawera.school.nz)

Happy Reading folks  
Laree for the library team.



Are you a person that likes to connect with others? Do you like feeling part of a community helping to make decisions that enable positive change? Would you be willing to share a couple of hours once a month to support our local Tapawera Connect Team as a Trust Member? If this sounds like something that may interest you, please email Phoebe Quinlivan or Nicola Allan for more information. PS Here's the sweetener! Delicious supper of scones with jam/cream provided!

(Phoebe) [tapaweraconnect@gmail.com](mailto:tapaweraconnect@gmail.com)

(Nicola) [nicolaallan434@gmail.com](mailto:nicolaallan434@gmail.com)



**Cancer  
Society**

Te Kāhui Matepukupuku  
o Aotearoa

# Survivors and Thrivers Support Group Tapawera

Connect and chat with others  
impacted by cancer

**Thursday 17 August**

1.00pm-2.30pm

**Tapawera Fire Station**  
Main Road, Tapawera

To register please contact  
[info@cancernelson.org.nz](mailto:info@cancernelson.org.nz)

Ph 03 539 1137

## Senior' Snippets

by Janine Leeden

As I write this we are preparing for our July Tea and Talk meeting, followed by a 'Christmas In July' luncheon treat at Kohatu



Flatrock Cafe. Hopefully there will be lots of winter cheer and merriment to help keep those winter blues at bay!

For our August meeting, on Tuesday 29th at 10-11.30am, at the Memorial Hall, we haven't yet booked a speaker, but I think I'll settle on the theme as 'Auspicious August', with the promise of another successful meeting and time of fellowship. Who knows what 'auspicious' guests might show up? Hopefully all my regular 'very special' guests and some more! Maybe Bob O'Leary can render some more of his (good Aussie) humour, like this limerick from last month:

*A funny old fellow from Ryde  
fell into a dunny and died,  
Later his brother  
fell into another,  
And they lay there, interred,  
side by side.*

Age Concern recently organised a Nelson/Tasman visit from Dr Angela Robertson, from the Kapiti Coast. Her aim is to support individuals of all ages to maximise their potential to enhance the quality of their lives, work and relationships. Since her own retirement she initially set out to help individuals write down their life stories and found inspiration in so many of them that, with their permission, has compiled them into a series of books called 'Older and Bolder' – with four different titles '.....Life on Our Own Terms'. She has also written another book called 'Changing Gears: Entrepreneurs @ 50+'. Apparently there is an emerging trend for people to start a business for the first time later in life. In NZ, 45% of these 'Entrepreneurs', are over the age of 50, and the trend has been steadily increasing since the onset of COVID-19.

Our weekly Sit and Be Fit class continues strongly each Friday at **10am-11am** (for Philip's attention particularly) at St Peter's church, Main Road, Tapawera. Again, a koha guide of \$3 per class helps keep us self-sustainable. We've got a great group of regulars, and have visitors that come back when they're in town, and much fun is had each week.

Thanks to Raewyn and Lisa who have provided some well made poi (following the great Matariki community celebration) for us to start practising some 'spin poi', Poi has the perfect mix of physical movement, cognitive

stimulation, and playfulness to keep the brain and body engaged as we age. In fact a clinical trial conducted on poi, health, and older adults found that after just one month of poi practice, participants improved their grip strength, balance, and attention. So, watch out, we're getting stronger and better at waving these poi around, which is just as well, cause it's a bit dangerous working with this group as they start spinning those things around the room!

Please don't forget that, as a community, we have access to: Sharon Webber, **Hearing Therapist. Please contact her on 0800 008011 to book an appointment. Again, this is a free service available to anyone over 16 years of age**, and a NZ resident. The organisation name has changed to Your Way Kia Roha.

Greig Price, Podiatrist, is willing to visit clients (of all ages) in their homes in Tapawera and surrounds. If enough people are interested we can cut the costs even more and arrange for him to utilize the Health Clinic in Rata Ave. **His email is: info@mobilepod.nz and phone number 022 419 0205 to book appointments.** Let's utilise this service so Tapawera stays on his radar! We need to keep on our toes.



## !! Volunteers still needed!!

Kia Ora Tapawera and our Tamariki, we are still on the lookout for more volunteers to help with the opening of our toy library. Are you looking to help around our community and want to join our kind, creative and easy going team - now is the time to apply as we are really needing you!! So contact Jan or head to our Facebook page and message us for more information.

We still have a great variety of toys available for our children to build their creativity and to explore such as bouncy castles (this can be hired out for birthday parties or any other fun events), board games for the family, puzzles, ride on cars, heaps of toys for kids to build their imagination. So come down and see what we have available.

Hours are still the same, every Thursday morning 10:30-11:30am or contact Jan: 0273915424 and we can open at any other time just for you :).



All Accounts Matter LTD

## For all your accounting and tax needs!

If you are looking for a new Accountant, now is the perfect time! I would love to find out about your business and have a no obligation chat about how I can help you. So don't wait, call me now!

**Sonia Emerson** Chartered Accountant

GST | Tax Returns | Payroll | Bookkeeping | Cashflow Forecasting  
Management Reporting | Rental Statements | Farm Accounts



ACCOUNTING SOFTWARE

myob

2020/2021  
Certified  
Consultant



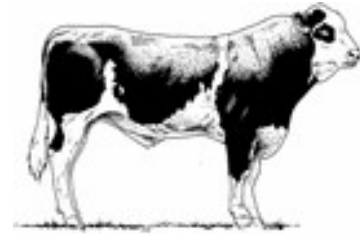
M: 021 221 1009 | P: 03 541 9005 | [sonia@allaccounts.co.nz](mailto:sonia@allaccounts.co.nz)  
367 Wakefield-Kohatu Highway, RD1, Wakefield 7095

[www.allaccounts.co.nz](http://www.allaccounts.co.nz)

Gillespie—1

MAF approved

Home kill butchery



03 547 7746

Butcher / journeyman  
Specializing in quality small goods  
Factory: 111 Bolt Rd, Nelson

## The Lady Tradie

Has your husband got a **round**



Spring has sprung

and the grass has riz !

Do you wonder where a handyman is ?

Can't get one ?

Then call " Jen the Lady Tradie "

for all your outside spring clean-up jobs

\* Gutters full of leaves;

\* Lawns that are starting to bolt;

\* Waterblasting those slippery paths

and all that spring growth that just might get away on you.

\* **Local Person** \* **Referees Available** \*

Consideration & discount shown towards Senior Citizens

**FREE QUOTES**

**Contact Jennifer**

Phone or text: **027 544 2663**

After hours/leave a message: **03 522 4453**

Email enquiries to: [jentheladytradie@gmail.com](mailto:jentheladytradie@gmail.com)

## HANDYMAN

- \* General property maintenance
- \* Clean out/tidy up
- \* Water blasting
- \* Gardening
- \* Chain sawing
- \* Repairs
- \* Demolition
- \* Any farm work

Fair hourly rate. Honest and hard working.

Local references available.

Please enquire to Jeremy Ellis (03) 522 4460



## Neighbourhood Support comes to town

People may not be aware but a room at the community centre has been used for some months now as a community workspace. Tapawera Connect has been working out of there for a while and Top of the South Neighbourhood Support has joined them.

Some time back Tapawera Connect, Top of the South Neighbourhood Support and the Motueka Catchment Collective put a proposal to the Tapawera & Districts Community Council that the room next to the main room on the road side become a workspace for community groups to share. The TDDC was very supportive of the initiative and has since fitted AV equipment in that room and the main room so meetings can be held online. Tapawera Connect organised a fresh coat of paint for the room and TDDC funded a heat pump with the help of Thinkwater Tasman Bay who installed it at no charge.

I am aiming to be at the community centre each week on Wednesdays from 9am-midday. Look out for the Neighbourhood Support flag and pop on in.

## Preventing Fraud and Scams

As our world becomes increasingly connected digitally, it's more important than ever that we stay aware of potential threats to our safety in the technology space. Recent publicity has emphasised how much scamming is going on and we all need to keep our wits about us every day to avoid being scammed.

These reported offences were listed in the NZ Police's Nelson-Tasman dishonesty crime stats over a recent four-week period:

- ☹ Money taken from bank as a result of scam (IRD text message and follow-up phone call)
- ☹ Money taken as a result of Facebook Marketplace scam (involving paying insurance fee for courier collection)
- ☹ Money taken as a result of Facebook Marketplace scam (involving QR code with NZ Post logo)
- ☹ Money taken as a result of telephone scam (person posing as BNZ employee)
- ☹ Money taken as a result of Facebook Marketplace fraud
- ☹ One of those offences was reported from Tapawera.

## Staying Safe Online

- Never give out your passwords, log in details, or account info.
- Don't respond or click on any links to verify your account information, even if it looks like it is from a real organisation.

- Never share personal or financial information by text or email.
- Do not respond to texts from unknown numbers, or any that appear suspicious.
- If a 'friend' sends you a text with a suspicious link, call them to make sure they weren't hacked.
- If a business or organisation sends you a text that you weren't expecting, call them to verify its authenticity using the phone number on your bill or statement (or their official website).
- If you receive an email from a business or organisation and suspect it might not be from whom it claims, look carefully at the email address and cross reference it to those provided on the official website. If still not sure, call the phone number listed on the official website to clarify that the email was truly sent from the organisation.
- Only shop on trusted and verified websites. Look for the padlock icon by the website address.
- Be wary of unexpected deals, contests, or log in requests.
- Check and adjust your privacy settings.
- Log out after using a shared computer.
- Report suspected scams.

## Credit Card and Eftpos Fraud

Theft of credit and EFTPOS cards is a common crime in New Zealand. So too is the associated fraud that comes with someone using a stolen card to purchase goods or services.

While Police work closely with banks and retailers to prevent this type of fraud, there are a number of simple things you can do to assist.

- Keep your credit or EFTPOS card safe. If it is stolen or goes missing, inform your bank or credit card company right away and have it cancelled immediately.
- Guard your Personal Identification Numbers (PIN) closely. Never give it out to anyone and avoid any easily guessed codes such as your date of birth or sequential numbers e.g. 1234.
- Never keep your PIN and card in the same place. Memorise it and ideally use different PINs for different cards/accounts.
- Destroy expired cards and sign new cards immediately.
- Match credit card and bank statements with your receipts. Follow up on any discrepancies.
- Keep a secure record of your card number, expiry date, and any numbers to call if your card is lost or stolen.
- Tell your bank or credit card company if you change your address so replacement cards are sent to the correct place.
- Look out for tampering of ATMs, EFTPOS machines and fuel pumps. Obvious signs of tampering include anything loose, crooked, or damaged. Avoid using a machine if anything looks unusual. Use machines in well-lit, visible sites and cover the keypad when entering your PIN.

# Providing gentle guidance when you need it most.



**Simplicity  
Funerals**

Simply respectful. Simply affordable.



**Anna Loach**  
Manager / Funeral Director  
Dip FD Reg. FDANZ

**NELSON & TASMAN WIDE,  
WE'RE PART OF YOUR COMMUNITY**

Phone 03 929 5145 | 276b Queen Street, Richmond  
[nelson.simplicity.co.nz](http://nelson.simplicity.co.nz)



- Know who you are dealing with when shopping online. If you're unsure, do a background check to make sure others haven't reported the website as a scam. **If the deal sounds too good to be true, it probably is!**
- Only make telephone transactions when you have instigated the call and are familiar with the company or individual. If in doubt, get them to send you an email with more information you can verify. Never feel pressured to provide sensitive information or pay right away.

*Something I always do when I receive an email and it just feels a bit "off" I hover with the mouse over the sender. Most email programs will display the actual email address the message has come from in addition to the sender's name. If the email has supposedly come from say, Kiwibank, but the address is a Gmail account (or looks odd in some other way), then it's a scam.*

*Be alert. Look out for little signs like the email supposedly coming from your bank, but they address you as "dear customer" - it's almost certainly a scam. If your bank is talking to you as a customer, they know your name and will use it. And of course, receiving emails from a bank you don't use or being asked to pay to release a package you haven't ordered are shouting out "scam." But at other times the scam may be plausible, and we need to apply the advice above.*

*For most of us our default setting is "trust," but scammers are using this against us online or over the phone.*

### Tapawera on Two Wheels

TTW is a group of locals who ride together monthly in the vicinity of Tapawera. Those who come regularly enjoy the chance to go for a ride with others and enjoy a chat as we get out into some of the picturesque spots around Tapawera. Rides include a free coffee or tea courtesy of Top of the South Neighbourhood Support. Come along and join us!

We try to offer a range of rides of different lengths for beginners or those returning to cycling right through to experienced riders.

Rides often start in Tapawera but the start point can change depending on the particular ride. They normally start at 9.30am on the third Sunday of the month but the date can change depending on other community events etc.

The rides are publicised in Local Happenings on the [tapaweracommunity.nz](http://tapaweracommunity.nz) website. If you would like to know more, please contact me: Gavin 027 757 6665 [gavin@neighbourhoodsupport.nz](mailto:gavin@neighbourhoodsupport.nz)



### Why join Neighbourhood Support?

Top of the South Neighbourhood Support is all about making connections with your neighbourhood on a street or rural locality level, and with your community at large. We believe that connection builds resilience and helps neighbourhoods feel safe and supported.

We also work alongside the New Zealand Police and other partners to equip neighbourhoods to improve safety, be prepared for emergencies, and support one another so that our communities are great places to live.

It's easy to join Neighbourhood Support! Just go to <https://topofthesouth.getsready.net/>. If you're not on the internet, contact me and I'll send you a paper form to join.

When you join a Neighbourhood Support street or rural group you will:

- Have a great way to get to know the people that live around you.
- Learn how you can be better prepared for emergencies.
- Gain tips and resources to improve your household and neighbourhood safety and deter crime.
- Receive emails and alerts that will keep you up to date with news from our community partners, including New Zealand Police.

Ngā mihi  
 Gavin Scoble  
 Area Connector| Tapawera & Districts  
 Top of the South Neighbourhood Support  
 027 757 6665 [gavin@neighbourhoodsupport.nz](mailto:gavin@neighbourhoodsupport.nz)



### VAST Annual Meeting

August 21st 2023 7:30pm  
 10 Totara Street  
 Tapawera  
 All welcome

## TAPAWERA ELECTRICAL

### Tony Stephens

Registered Electrician

Ph/fax 5224257  
0276249489

All electrical needs  
Domestic & Rural

Wiring, faults, some home appliance repairs  
New heat pump installations



Free Quotes  
Competitively priced



Relaxation    Deep Tissue  
Deep Flow Bodywork

60 min Massage \$85

90 min Massage \$120

Ph/Text or Fb message for an appointment  
Gift Vouchers Available!

Sam 027 5224189

4827 Motueka Valley Hwy, Tapawera

# WADSWORTH MOTORS LTD.

- Coach Charters & Tours
- Mini Bus Hire.
- School Transport
- Professional friendly drivers
- Members of the Bus & Coach Association

Over 100  
Years of  
Service

wadsworthmotors@extra.co.nz  
100 Main Rd, Tapawera  
www.wadsworthmotors.co.nz

## 027 4873167







## Menopause

Menopause is the time that marks the end of women's menstrual cycles and is diagnosed after a woman has gone 12 months without a menstrual period. The average age of menopause is 51yrs of age with most women experiencing menopause between the ages of 45 and 55. Symptoms of menopause can begin four to five years before periods stop as the body starts transitioning to menopause and this time is referred to as 'peri-menopause'.

Menopause symptoms can be debilitating and many women need support as they transition through this time in life. Symptoms can include hot flushes, night sweats, tiredness, joint pain, sleep disturbance, weight changes, vaginal dryness and mood changes. Both peri-menopause and menopause can affect your relationship with your partner and children, and reduce your effectiveness at work. Many women down play these symptoms and carry on as best they can rather than seeking help.

There are a range of treatments and lifestyle adjustments that can help to manage menopause. Dr's Eloise Fry and Jenny Cooper both have an interest in Menopause and have spent this last year doing extra training in this area. They are looking at offering a private Menopause Clinic one evening per week at the Wakefield Health Centre later this year.

Recent documentaries about menopause on TVNZ on demand "Sex, mind and the Menopause" and "Sex, myths and the Menopause" are an interesting watch, for those looking for more information the Australian Menopause Society have a very good website with a lot of reliable information.

Please phone the medical centre for more details and to register your interest.



## TAS News July

**Newsletter Issue 9, 29 June 2023**

*From the Principal's Desk...*

*Tēnā koutou e te Whānau ki te Kura o Tapawera*

*Another busy term has gone by and we can celebrate many amazing things that have happened this term. You only have to look at our **Facebook** page to see the amazing opportunities we are giving all our students. This week we are celebrating our **Support Staff** - these people do an amazing job of supporting our teaching staff and students. These wonderful people work in the classrooms, the library, the office and on the grounds. We are so lucky to have them. Thank you to...*

*Susan and Barbara - office*

*Sandy, Murray and Alison - Caretaker/ Grounds*

*Brenda, Kaye, Willie and Alison - Cleaners*

*Kelly, Cindy and Lareen - Library*

*Judy, Teagan, Jeannie, Emily, Ali and Aleisha - Teacher Aides*  
*Renee - Sports Co-ordinator*

*Have a great holiday break and see you in Term 3. Thank you for your ongoing support and Aroha for our kura.*

*Sarah Coard, Principal*

*principal@tapawera.school.nz*

## Other School News

A huge thank you to families for sending in food items for our **hangi at Matariki**

**Farewell Jeff Rowland** We would like to take this opportunity to farewell Jeff after his 21 years of service in our kura. Jeff has worked with so many students over the years and supported many families. Thank you for your commitment to our students Jeff. We have enjoyed seeing you dressing up in all sorts of colours for different events and your willingness to ensure our school productions were 'right on the night'. We have enjoyed your warmth and kindness. We wish you all the best for your next adventure.

Our year 6-8 students have been super lucky to have 3 instructors from the **Ride On programme** working with them in the last 2 weeks. **Thanks to the TDC** for supporting this programme.

**Congratulations to Sarah Jones** on her selection into the 2023 Tasman Mako Women Farah Palmer Cup Squad. We're proud of your achievement.

As told by

Susan Fenemor, Staff

**LET'S CELEBRATE!**

Tapawera is chocca-block with unsung heroes, good buggers, and angels in disguise! Let's recognize these beautiful people in our community, and say thanks!

We are excited to be offering the crazy prize of a Tandem Skydive with Abel Tasman Skydiving! If you would like to nominate someone in our community making a difference then please email or message us with a "who" and "why" and get them in the draw for an adventure of a lifetime!

Offer must be taken in the month of September and is subject to weather conditions. Please message us, or email [tapaweraconnect@gmail.com](mailto:tapaweraconnect@gmail.com) before 20th Aug  
**GOOD LUCK!**

**Book Discussion Group**

Meet: 4th Thursday in month, 10am  
 Contact: Paula Davis ph. 5224341

**Federated Farmers**

Contact: Harry Matthews - Field Rep -  
 0275078901

**Golden Bush Garden Club**

Meet: 2nd Thursday of month  
 Contact: President, Irene Griffith  
 0212525098, or Shirley Percy 5224924

**Golf**

Meet: every Sunday, Ladies 9 hole  
 every Tuesday  
 Contact: Gary Oldham ph. 0278080578

**Historical Society**

Contact: Barbara Carleton ph. 5224317

**Informer**

PO Box 15 Tapawera  
 Email [tapawerainformergmail.com](mailto:tapawerainformergmail.com)

**Justice of The Peace**

Peter Phillips ph. 5224313  
 John Ellis ph. 021 522429  
 Brent Hodgkinson ph. 5224381  
 Francine Currie ph. 5224245  
 Susan Fenemor ph. 0275224009 (text  
 during school hours)

**MENZSHED**

Contact: John Wilmshurst ph. 5224616

**Neighbourhood Support**

Contact: Gavin Scoble  
 ph. 5224585 or 027 7576665  
 Email [gavin@neighbourhoodsupport.nz](mailto:gavin@neighbourhoodsupport.nz)

**Netball**

Contact: Susan Fenemor ph.  
 0275224009 (text during school hours)

**Ramblers**

Meet: each month  
 Contact: Shirley Percy ph. 5224924

**Shedwood Hall bookings**

Contact: Tania Higgins ph. 5224587

**St Andrews Church Stanley Brook**

Services every Sunday. Cup of tea  
 afterwards.  
 Contact: Lee Winter ph. 5224160

**St John Ambulance, Tapawera**

St John: ambulance – dial 111,  
 Contact: 0800 785 646 ext. 3227

**Tapawera & Dist. Community Church**

Service: St. Peter's Tapawera. 2nd &  
 4th Sundays at 3pm  
 Contact: Church Office 03 541 8883  
 Vicar: Rev. Don Moses ph. 541 8883

**Tapawera & Dist. Community Council**

Meetings: 3rd Tuesday of month,  
 7:30pm Tapawera Community Centre

**Tapawera Community Centre**

Lisa Carleton ph.0274461017

**Tapawera Connect**

Contact: Phoebe Quinlivan ph. 021 211  
 6730 or 522 4929, email:  
[tapaweraconnect@gmail.com](mailto:tapaweraconnect@gmail.com)

**Tapawera Creative Fibre**

Meet: every Wednesdays, Memorial Hall  
 Contact: Dallas Robinson ph. 5224984

**Tapawera Food Bank**

Contact: Suzzi Lankshear ph.  
 0277491063

**Tapawera Jujutsu Club**

Contact: Tony Hammersley ph. 5224609

**Tapawera Music/Country Music Club**

Meet: Alternate Sundays, Tapawera  
 Hotel 7:30pm  
 Contact: Elaine Douglas ph. 5418612

**Tapawera Op Shop**

Contact: Lisa Carleton ph.0274461017

**Tapawera Playcentre**

Meet: Mon & Thur, 10am -12:30pm  
 Memorial Hall ph. 5224456

**Tapawera Rugby Football Club**

Bookings: ph. Judy Benjamin 5224445

**Tapawera Sport & Recreation Society**

Contact: Judy Benjamin ph. 5224445

**Tapawera Volunteer Fire Brigade**

Contact: Dean Millar Chief ph.  
 0279651399; Ted Oakly Deputy Chief  
 ph. 0210704033

**TAS / Community Library**

Mon-Fri 10:30am-1:30pm. Contact:  
 Lareen Bonnington ph. 5224149  
 Library ph. 5224337/ext. 213

**TESSI**

Contact: Bruce Whyte ph. 5224550

**Toy Library**

Open Thursday 10:30am-11:30am  
 Contact: Jan ph. 5224102

**Visual Arts Society Tapawera**

Contact: Dallas Robinson ph. 5224984

**Wakefield Police**

Constable Jamie White –  
[jamie.white2@police.govt.nz](mailto:jamie.white2@police.govt.nz)  
 Constable Matthew Berquist –  
[matthew.berquist@police.govt.nz](mailto:matthew.berquist@police.govt.nz)  
 Non Urgent (CRL) – Call 105  
 Happening Now – Call 111

## What's on August

- 3 TDCC Coffee Morning,  
Community Centre, 10:30am
- 6 TDCC Nominations close, 5pm
- 8 Wellby Talking Café,  
Community Centre, 10-  
11:30am
- 10 Garden Club meeting & AGM,  
Shedwood Hall, 11am
- 15 TDCC monthly meeting,  
Community Centre, 7pm
- 17 Cancer Society Support Group,  
Tapawera Fire Station, 1-  
2:30pm
- 20 Articles for Informer close 5pm
- 21 VAST Annual Meeting, 10  
Totara St, 7:30pm
- 25 Applications close for Network  
Tasman Trust grants
- 27 Tapawera Netball Club  
prizegiving, TAS kitchen/music  
room, 2pm
- 29 Tea and Talk, Memorial Hall  
10:00am - 11:30am

## GP & Nurse at Tapawera Clinic

(during school term time):

**GP clinics** – Mondays  
9am – 12 midday

**Nurse clinic** – alternate  
Tuesday mornings - phone  
541 8911 for dates

\* *Do you have an event you  
would like listed in What's On?*

\* *Or a community group or  
organisation you would like  
included in the directory?*

If so, please email  
[tapawerainformergmail.com](mailto:tapawerainformergmail.com)