



Community First Aid Course for Tapawera



A full-day first aid course is being offered free of charge to community members in May by Tapawera Connect through the funding support of Top of the South Neighbourhood Support.

Neighbourhood Support is pleased to support this community initiative because it will help our community to be better prepared for emergencies, especially our rural folk living further away from immediate first aid support.

The course is free but a refundable \$20 deposit is required to secure a place on the course.

The course will be held on 20 May at the Tapawera Rugby Clubrooms. Secure your place by emailing tapaweraconnect@gmail.com by 13 May.

For more information contact Juliana Griese 0204 0119025

Wellby Talking Cafés in Tapawera



Wellby Talking Cafés run monthly on the second Tuesday from 10-11.30am. Neighbourhood Support is pleased to be part of bringing these social events to Tapawera.

Talking Cafés are a fantastic opportunity to meet people, make new connections and learn more about your community over a free cup of coffee or tea provided by Wellby. Currently we are meeting in the Community Centre (Op Shop).

What is Wellby? Wellby is a community-led initiative that's helping the people of Nelson Tasman to better connect to their communities, improving their wellbeing.

Wellby Talking Cafés welcome everyone and anyone. There is no need to register, just turn up on the day. There is no programme and no guest speakers. They are about enjoying relaxed conversation with other locals over a free cuppa!

The next Tapawera Talking Café will be held 10-11.30am Tuesday, 9 May at the Community Centre.

Tapawera on Two Wheels



A group of locals ride together monthly in the vicinity of Tapawera.

Those who come regularly enjoy the chance to go for a ride with others and enjoy a chat as we get out into some of the picturesque spots around Tapawera. Some of you may recall the social agency person in *Hunt for the Wilderpeople* with her "no child left behind". Well, we operate with the motto of "no cyclist left behind". So we catch up regularly and don't leave anyone behind. It's all about having fun out on our bikes. So come along and join us!

The rides are publicised in Local Happenings on the tapaweracommunity.nz website. Ride details may change but usually they start at 9.30am from the open space beside the Four Square on the third Sunday of the month.

Street Groups for Tapawera

Do you want to belong to a safer, more connected, more resilient neighbourhood? Great, because Neighbourhood Support is looking for local people to join street groups in the village.

A well-connected community helps to improve the safety, resilience, and well-being of all residents. By working together, we can support each other, solve local issues, and make our neighbourhoods safer and more welcoming.

It's easy to join! Go to <https://topofthesouth.getsready.net/> to join Neighbourhood Support.

[For any questions or more details please contact: Gavin 027 757 6665 Email](#)

Ngā mihi

Gavin Scoble

Area Connector| Tapawera & Districts
Top of the South Neighbourhood Support



Relaxation Deep Tissue
Deep Flow Alignment Bodywork

60 min Massage \$85

90 min Massage \$120

Ph/Text or Fb message for an appointment
Gift Vouchers Available!

Sam 027 5224189

Hannah 027 3142970

4827 Motueka Valley Hwy, Tapawera

HANDYMAN

- * General property maintenance
- * Clean out/tidy up
- * Water blasting
- * Gardening
- * Chain sawing
- * Repairs
- * Demolition
- * Any farm work

Fair hourly rate. Honest and hard working.

Local references available.

Please enquire to Jeremy Ellis (03) 522 4460

RURAL POST, RD 2 Wakefield

Contact Nick & Jackie Costley for all your RD 2
Wakefield postal needs.

Including prepaid envelopes, stamps, courier
items and local freight from Wakefield, Dovedale
and Tapawera. Prescriptions from Wakefield.

Phone 0275418581

Mark & Tania Gill
T/A MTJ Transport
RD2, Nelson
NZ Post Rural Contractors
Servicing
Motupiko-Korere-Kikiwa-Tophouse-St Arnaud-Glenhope

For all your Postage, Milk & Courier Freight
Operating 3 Days Weekly
(Monday-Wednesday-Friday)
Departing Nelson 8.00am
Phone 546 6295

Material & adverts for Informer

All material is to be sent to either:

Informer, PO Box 15, Tapawera, 7055
or email- tapawerainformergmail.com

To be received by 5pm
20th of the Month

If emailing a word document please send in Word as an
attachment.

If sending an advert please save as a jpeg before sending.

Please check your emails to see your article/advert has
been received as sometimes there needs to be alterations.

Advertising rates for Informer

Standard advertisement	
1/4 page advert	\$25
1/2 page advert	\$35
Full page advert	\$50

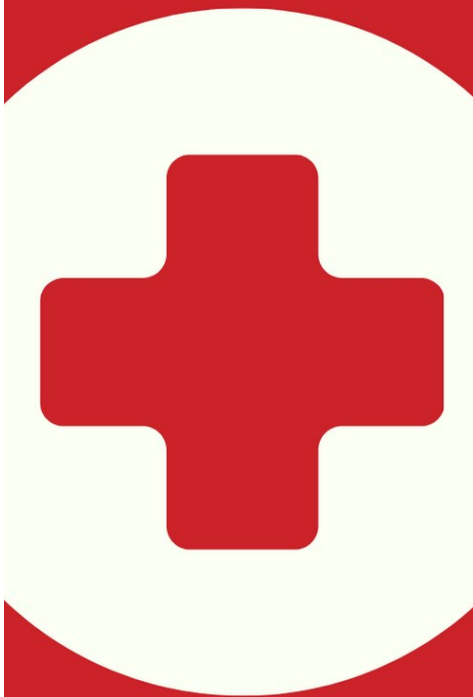
Adverts that require editing may cost extra

The Informer is produced and published by the Tapawera and Districts
Community Council, PO Box 15, Tapawera, 7055;
email: tapawerainformergmail.com
Circulation 635
Editor: Gill Hammersley
The Editor and Publisher try to ensure information published is truthful

and accurate, but do not accept any responsibility for errors or
omissions, or for any consequences of readers' relying on the
information published. Opinions expressed by contributors may or may
not be endorsed by the Editor or Publisher.
All material submitted, whether editorial or advertising, is accepted at
the discretion of the Editor and the Publisher.

Community first aid course

20th May, Tapawera Rugby Clubrooms



This full day first aid course is being offered free of charge to the community by Tapawera Connect through the funding support of Top of the South Neighbourhood Support.

Neighbourhood Support is pleased to support this community initiative because it will help our community to be better prepared for emergencies, especially our rural folk living further away from immediate first aid support.

A refundable \$20 deposit secures a place on the course. Register through email tapaweraconnect@gmail.com by 13/05/23. More Info: Juliana Griese 0204 0119025



COME TO A TALKING CAFÉ

Connect with your community



Upcoming Talking Cafés

Tuesday 9th May 10am-11.30am
Tapawera Community Centre, Main Road Tapawera

Tuesday 13th June 10am-11.30am
Tapawera Community Centre, Main Road Tapawera

Talking Cafés are about enjoying relaxed conversation with other locals over a free cuppa! They don't have a formal programme or speakers. Join us at the Tapawera Community Centre at the dates and times listed above!

For more details:
wellby.org.nz
or phone (03) 546 7681





Tapawera Rugby 2023



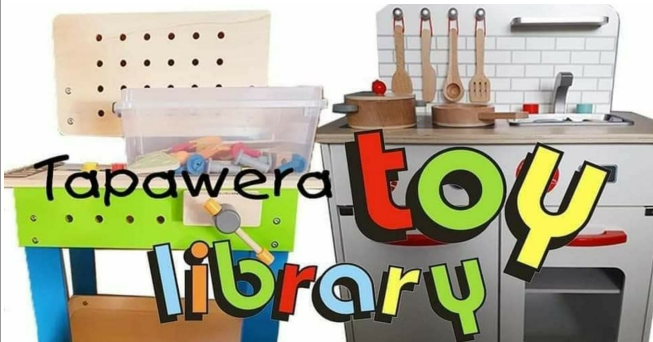
The season is looking great, this year we have two teams playing in junior grades. Tapawera U6s and our U12s are combining with Murchison under the Valley Stags. We are also supporting a number of JAB players playing for clubs around our region. This includes Rangers, Wanderers, Stoke and Waimea.

You can view the draw and see when our teams are playing at home at <https://www.tasmanrugby.co.nz> under draws and standings / Junior Rugby. The weekly draw comes out every Monday afternoon. You can also follow our Facebook page 'Tapawera Rugby' to keep updated with where our teams are playing each week.

Our seniors have combined again this year with Rangers to make up a Valley Stags Team.

Upcoming dates

- Saturday 29th April Junior Rugby Festival Games Day
- Saturday 29th April Senior Rugby Starts
- Saturday 6th May Junior Rugby Starts
- Saturday 13th May Tapawera Club Day



Kia ora Tapawera and our Tamariki, we have a great variety of toys for our Tamariki still, if you want your Tamariki to have a fun weekend and since the weather is becoming colder, we have great hire options available for the family and Tamariki such as a Bouncy castle, Board games, Puzzles, Bikes and ride on cars, and many more fun toys to hire for children to build their imagination and have fun over the weekends!

So come down to the toy library to have a look!. A huge Thank You goes out to the Lotteries Commission for their ongoing support granting funds to help Tapawera Toy Library with operating costs. With this help we are able to maintain providing this wonderful service to our Tapawera Whānau. Hours and days are still the same Thursday morning 10:30-11:30 or contact Jan 0273915424



Library News

The second school term has started now so if you don't have children at school and forgot the library opening times, we are open again Monday to Friday 10-30-1-30. The new hours seem to be working well without inconveniencing our lovely regular members among the community but do remember you can still come during the other school hours, just obtain a key from the office and leave your details at the desk.

We have our new Richmond collection on the shelves now and are confident there's something there to suit all tastes. For those new to the community, we borrow books from Richmond about twice a year on a long-term loan. We get about two hundred a time and will always try to get any authors or titles requested.

We are spending our generous book budget for the year so if there's a book either fiction or non-fiction you think would be a good one to get for our students, we'd love to hear from you.

We do seem to have quite a few new members lately, it's great to know that people in the community are realising that our library is definitely not just a school library but is there for the community too.

Remember you can check out our catalogue at nz.accessit.online/TPW00 (last two digits are zeros). You can also check your children's issued books by asking us for their membership number. The children love doing this themselves on the library computer. Even the youngest are adept at using a scanner to get into their own accounts or to search for a book.

If you haven't been into the library yet, do come in for a browse. I think you'll be pleasantly surprised.

You will find us behind the tennis courts at the school. Our opening hours are Monday to Friday 10.30-1.30.

Email library@tapawera.school.nz phone 5224337ex213 website as above.

Happy Reading folks

Laree for the library team



Native Revegetation

on a Tapawera beef cattle farm

Establishment Field Event

Friday 5th May 1.30pm

The afternoon will begin with an introduction from Evan Baigent, an established local beef/cattle farmer, who actively started planting natives on his property in 2019. It will be followed by a presentation from Marcus Woodward from Enviroplus Consulting, who specialises in the field of native plant revegetation and wetland development.

Marcus will take us through the processes of designing, implementing, and maintaining large and small revegetation projects. He will also talk about the benefits gained from enhancing native biodiversity on the farm, whilst working to achieve both good farming and environmental outcomes. After a Q&A and group discussion, we will take a walk around Evan's wetland and riparian plantings to see how they have developed over the last couple of years.

675 Tapawera-Baton Road, Tapawera.

Follow the signs from the road. Gum boots or other sturdy footwear is advised. Bring a raincoat as the event will continue unless it is extremely wet! Refreshments will be made available towards the end of the afternoon for those who would like to discuss more after the walk. Any queries, contact Kate at richkate73@gmail.com



Seniors' Snippets

by Janine Leeden

As I write this we have just had our Safe Driving Course, run by Age Concern and sponsored by Waka Kotahi NZ Transport Agency. This was held at the RF Clubrooms, which was a much better sized venue for the day. A lovely morning tea and tasty and healthy lunch was provided.



Thank you to the RFC Committee for allowing us to hire the venue for the day. Jackie McIntyre from Age Concern, and Garry Dunne, a qualified Driving Instructor who put us through our paces (he is an ex-traffic cop – so lots of experience and knowledge about our roads and the conditions we face out here as well), as well as three lovely gentlemen AA volunteers that drove out from Nelson for the afternoon to put us all through the Carfit programme. I must also thank my amazing volunteers that continue to support my efforts and enhance the experiences for our local seniors – Sue Grant, Amanda Beer, Deborah Cumming and Francine Currie. (I couldn't do this role without you and I so appreciate each and every one of you and the gifts you bring).

I had to chuckle as none of my attendees opted for the Carfit, despite my earlier efforts to secure numbers to make it worthwhile for the AA Volunteers that drove all the way out specifically. While I had warned Jackie that no-one was up for it, these canny fellows ensured they caught everyone at their cars while trying to make their escape! They wouldn't even let me leave at the end of the day until they'd put me through my paces, checking the car, my seating position, the mirrors / vision, and my familiarity with my cars' features.

I am pleased to say that we were all awarded certificates that we'd completed the 'Staying Safe' theory based refresher course. So now I can honestly say that most of my Seniors are all **certifiable!** I even heard a couple of the front seat /back seat drivers, who monitor driver behaviour, commenting that maybe they'd learned something that they'd been wrong about before. It was a valuable course to do, especially when we've had our licences for many decades and there have been changes to road layouts (roundabouts a relatively new concept) and road rules, to know that we were on the right track.

Jackie, who runs these courses around the region, commented that she was pleasantly surprised at how our group were so observant and conscious of the driving / road conditions in our area, which came down to experience of rural driving. This contrasted with the usual urban drivers that she sees.

We will be having a May Mystery Meeting at this stage, at our usual venue of Memorial Hall from 10-11.30am on Tuesday 30th May.

Please don't forget that, as a community, we have access to: Sharon Webber, **Hearing Therapist**. **Please contact her on 0800 008011 to book an appointment. Again, this is a free service available to anyone over 16 years of age**, and a NZ resident. The organisation name has changed to Your Way Kia Roha.

Greig Price, Podiatrist, is willing to visit clients (of all ages) in their homes in Tapawera and surrounds. If enough people are interested we can cut the costs even more and arrange for him to utilise the Health Clinic in Rata Ave. **His email is: info@mobilepod.nz and phone number 022 419 0205 to book appointments.** Let's utilise this service so Tapawera stays on his radar! We need to keep on our toes.

Native Revegetation Establishment Field Day - Friday 5th May 1.30pm

When local people drive past Evan and Adrienne Baigent's farm on Tapawera-Baton Road, many often comment about how much they enjoy watching the young native plantings and wetland thrive. On Friday 5th May, Evan and Adrienne are opening their property up for a Native Revegetation Establishment Field Day where Marcus Woodward from Enviroplus Consulting will share with us the tools and techniques needed to take on both small and large revegetation projects. His presentation will include the following points:

- Why plant native trees
- Preparation prior to planting
- Planting plan
- Methodology
- Species layout
- Cultivation and planting techniques
- Plant support e.g., guards/ stakes/ fertilisers etc
- Planting demonstration
- Unexpected events post planting
- Ongoing maintenance
- Q&A and group discussion

We really hope you will join us!

Tasman Bay Chiropractic
64 Oxford Street Richmond



Keeping you in the game since 2002

Referrals, families and
 all new clients welcome

Visit our website or call for more information

tasmanbaychiropractic.co.nz

03 544 4554

Monday-Saturday

Find us on 



"...for all creatures great & small..."

**Regular Tapawera visits
 discounted mileage
 T&Cs apply**

Ph 544 1200

info@tcvet.co.nz * www.tcvet.co.nz

**25 Edward Street, Wakefield
 35 McGlashen Avenue, Richmond**



24 hour emergency vet

**TAPAWERA
 ELECTRICAL**

Tony Stephens

Registered Electrician

Ph/fax 5224257
 0276249489

All electrical needs
 Domestic & Rural

Wiring, faults, some home appliance repairs
 New heat pump installations



Free Quotes
 Competitively priced

**COMPUTER
 PROBLEM?**



**WE'LL COME TO YOU AND
 FIX IT!**

**WHAT
 WE
 DO**

- ✓ COMPUTER REPAIR & UPGRADES
- ✓ HARDWARE REPAIR & REPLACEMENT
- ✓ APPLE & WINDOWS INSTALLATION
- ✓ TUNE UP & VIRUS REMOVAL
- ✓ IT RELATED CONSULTATIONS

Professional Services For Home & Offices

**TAPAWERA & SURROUNDING
 AREAS**



CALL 020 4113 7306



Principal's Comment

Kia Ora e te Whānau

I can't believe I have almost completed a term as the Principal of Tapawera. It has been an excellent term for forming relationships and learning about our school and its people. Tapawera Area School gets into your heart very quickly. I love being the Tumuaki / Principal of Tapawera already!

Top Highlights for Term 1 from my perspective (no particular order)

- *The wonderful warm welcome my family and I were given by all.*
- *Celebrating with Room 3 students when they complete their alphabet.*
- *Giving out the Top Pupil award at the Primary assembly.*
- *Meeting with all staff members individually to get to know them and for them to give feedback about the school and what they want to happen next.*
- *Learning about Positive Behaviour for Learning (PB4L) and how it works.*
- *Attending the Area Schools Tournament with Steve, Renee and the team.*
- *Being a part of House Captain Leadership Day.*
- *Winning ten-pin bowling at the staff social.*
- *Working with an excellent Board willing to do their best and support change.*
- *Working with Rosa Cameron as the student representative on the Board. Rosa is very insightful.*

*Thank you to those who attended the hui on Positive Behaviour for Learning (PB4L). I will continue the monthly hui's in Term Two to further connect with the community and get feedback. The following **Hui with the Principal** will be Wednesday, 17th May, from 9 am to 10 am. This hui will focus on the school time structure and timetable. Come along and give your feedback. Coffee and biscuits are available. All Welcome*

As I have said before, Tapawera Area School has amazing things happening and also has the potential for other amazing things! Bring on Term Two to further grow and learn together as a school.

Thank you to everyone who has supported me and my family through our first term at Tapawera and in the Tasman area. We feel at home, down to the people we have met and interacted with. We hope you have an enjoyable holiday period with your children. The girls, Merv and I are returning to Canterbury to catch up with family and friends.

Thank you for your ongoing support and aroha for our kura.

Sarah Coard

principal@tapawera.school.nz

Our School News

This year it has become apparent that Tapawera Area School

has several students seeking further Leadership opportunities. The school has always encouraged this approach through House captains, mentors, sports coaches and umpires. This year, for the first time, we asked the students to apply for two **Head Student** positions. From several applicants, the senior leadership team finally decided on two years 13 students in Rosa Cameron and Cameron Hatton.

What a blast this group of students on the **Marahau Camp!** A huge thank you to the staff and parents who made this happen. Our tamariki from Years 7- 8 would like to thank Tanya Snackers, Todd McAuley, Josie Orr, Gordon Baird, Jan and Hamish Barker, Lisa and Dion McGaveston, Leigh Davis, Shaye Walker and Sarah Coard for making this week a huge success! We were privileged to have such a well-mannered group of students who were a pleasure to take away.

Principal's Award for Term 1 2023: Awarded to **Cameron Hatton** for contribution to our school and community, for the efforts and the integrity shown.

Friends of the School thank the people working on fundraising events to support our tamariki. I would like to thank them for all their hard work and dedication. We cannot thank you enough: Sylva Tovizi, Jeanette Booth, Jo Hillerby, Judy Benjamin, Vicky Smiler, Kath Christianson, Amanda Beer, Michelle Vincent, Lisa Carleton, Debbie Sosich, Lisa Butcher, Barbara Carleton, Ann Steele, Dallas Robinson, Liz Habgood, the staff and students from school. You are all superstars! Especially over the weekend for the Kaka Shield - I hope I haven't missed anyone; my apologies in advance.

Year 7-8 Easter Raffle

The first prize winner is **Steph Win**. The second prize winner is **Anna Russ**

Room 3 went out again **to collect seeds**. We had so much fun looking for white and orange berries. We learned that these berries are food for skinks and not for humans. Also, wash your hands thoroughly after working in the garden.

Student Advocate & Mentor Programme Pilot (SAM)

Our Aim:

One of the benefits of being a small school is that we can personalise learning and build positive relationships between students and staff. An in-school mentor can be an advocate, a support and a motivator. Someone that isn't the student's parent or a teacher they have regular classes with. Someone who can help students aspire, ask the tough questions and not judge. Our Student Advocate & Mentor programme (SAM) aims to provide that person.

How it works:

The SAM programme will be about trust, being non-judgemental and building a genuine relationship. We are starting this programme with our Year 11- 13 students. Each student has nominated three staff who they feel could be their SAM. Beginning next term, students and Mentors will meet regularly to check their progress and well-being. Mentors may also need to follow up with class teachers occasionally to support, advocate, or inquire about student progress.

Providing gentle guidance when you need it most.



**Simplicity
Funerals**

Simply respectful. Simply affordable.



Anna Loach
Manager / Funeral Director
Dip FD Reg. FDANZ

**NELSON & TASMAN WIDE,
WE'RE PART OF YOUR COMMUNITY**

Phone 03 929 5145 | 276b Queen Street, Richmond
nelson.simplicity.co.nz



Sport Term 1

This term, several students worked hard in after-school practice towards improving their **Athletics** performance. The students involved were rewarded with personal best performances in various events. Athletics Day itself was a successful day in terms of participation and effort. The day itself was dominated by Tadmor House in their performance and Baton House in their participation numbers. Sarah Jones had a great day, breaking school records in all U19 girls throwing events. The discus record broke a record set in 2002 which seemed quite an effort until we realised that the javelin record held by Maree Dawson had stood since 1992.

A group of students that had been practising then went on to represent the school at the annual **Athletics Regional Championships**. James Snackers managed a personal best in the Triple Jump, Riley Hook finished 4th in the Javelin, and Jada Jelinek finished 3rd in the Javelin and recorded two-second places in the Shot and Discus. Caitlin Newport finished first in the High Jump, whilst Sarah Jones had a day to remember with second places in the Triple Jump and Shot, alongside an excellent first place in the Discus event.

This year the **TOSI tournament was held at Rai Valley Area School**. The group of twenty-plus had been practising all term. After an initial trip to Rai Valley for the Powhari, the group then travelled to Saxton for a day of Basketball and volleyball. It was a mixed day for the teams, with the boys competing well but finding the competition difficult after losing Flynn Morgan with a problematic injury early in the day. It was the second injury requiring crutches after injury before the event for Shakaia. The girls, however, had an excellent time, winning both events. After this, we returned to Rai for three and a half days, competing in sports and cultural activities. There were many standout moments, including first in the Wearable Arts inspired by our FIRE values and led by Kara Page, Third in the Top Chef led by Cameron Hatton, preferably in the Technology challenge led by Joseph Butcher and Tamati Bright, first in the Orienteering with Rosa Cameron and Tanika Oakley and Third place in the boys' Touch. We also managed first place in the girl's obstacle course inspired by the efforts of Sarah Jones. Still, ultimately this ended with yet another injury resulting in another pair of crutches. We went into the final day only one point off the lead, but injuries



and the efforts of Collingwood and the winners, Murchison, left us in Third, which we would have gladly taken before the event. As a School, we did very well, and the students involved, led by Rosa and Flynn and expertly guided by our sports coordinator, Renee, showed a true Tapawera spirit throughout the week. We are already considering next year's event, which will be held in Murchison.

Students were then selected to attend the **Amuri Trials**, other TOSI students and those from the Canterbury region. This is to make teams participate in the National event held during the June -July holidays in Rangiora. Rosa Cameron: Volleyball and netball
Sarah Jones: Volleyball, Ki-o-rahi, Basketball
Flynn Morgan: Ki-o-rahi and Rugby
Taine Collins: Ki-o-rahi and Rugby
James Snackers: Ki-o-rahi
Kara Page: Netball

As told by
Susan Fenemor

Rural Ramblers



Photo taken of some of the Rural Ramblers in front of the mosaic art installation (Arrivals and Departures) at the Motueka Marina.

We had just completed our April walk along the beachfront and estuary and were on our way to Toad Hall for lunch. Over the past few months we have done a few beach walks as well walking some cycle trails and trail around the Nelson airport. We usually finish with lunch at a cafe.
Shirley



CHEESE MAKING 1 WORKSHOP

with Verena Gruner and Tanja Pauls

14th May - Hard
Cheese

21th May - naturally
fermented cheeses

*This session includes making cheese cake,
dips and a fresh dessert, and is lots of fun!*

1-3pm at the Tapawera School Kitchen



\$20 contribution, 5 free places
more info and registration by email:
tapaweraconnect@gmail.com



Golden Bush Garden Club



Our April get together was a bus trip to Motueka. The first stop was at Peter and Pam's in Atkins St. For many years they ran a successful plant nursery, they have now scaled down but still sell a varied selection of plants. After talking about the history of the property and their background in the industry we were able to indulge in some retail plant therapy and look around their extensive garden. It was then onto the town garden of Graeme and Liz. It was surprising how spacious and private the garden seemed with a pleasant park background and an old horse drawn wagon on display out the front.

The weather definitely improved and on the way to lunch at Jester House we were able to make a quick stop at Miriam's plant stall in Thorpe St. From there it was on to a welcome lunch and then a look around the unique grounds and buildings. We then went to Grant and Gaile's garden which is quite different with mass plantings and a path winding throughout and only a very small lawn area. What has been achieved in the three and a half years they have

been there is amazing. Grant mulches all the clippings etc and these go back into the garden which is organic.

Our last stop was at Vicki's Garden Art which she makes out of old corrugated iron cut into shapes and painted. They are all shapes and sizes and most are of either local or NZ Scenes, many featuring native birds etc. All the people we visited made us feel welcome and were very informative about what they do. There were six prizes in the raffle - selection of plants and olive oil.

Our next meeting is Thursday, May 11th, 11am at Gardens of the World, 95 Clover Rd. Between Brightwater and Hope. Please bring a chair, lunch, thermos or drink and money for raffles. The club is paying your admittance fee.

Till next time, happy gardening. Shirley.

Yoga with Josie

Wednesdays 6-7pm
Tapawera School Music Room

School Term Time Only
Term 2: 26th April - 28th June

All Abilities Welcome
BYO Mat

\$12 per class or \$100 for the term
(10 classes)

50% discount for students

Contact Josie: 027 612 5813

Mums and Kids Yoga with Josie

Thursdays - 3.30-4.10pm
Tapawera School Music Room

Starting Thursday 27th April
\$5 per class, BYO Mat

All ages and abilities welcome
no experience need!

Contact Josie: 027 612 5813



Introducing Doug Smith

I have been living and working locally since 2008. Use my experience, honesty, integrity and work ethic to deliver you the highest value for your number one asset. Competitive commission and marketing tailor made to your individual requirements.

I welcome your call for a no obligation appraisal and any advice I can give you.

**Professionalism
Knowledge
Competitive Pricing**



M 027 543 2280
douglasjcsmith@pggwrightson.co.nz

NEW LISTING



TADMOR 1584 Tadmor-Glenhope Road Tadmor Valley Lifestyle..

Entry-level lifestyle block in the beautiful Tadmor Valley. If you have been dreaming of that rural lifestyle but prices just keep getting away from you well here is your opportunity. The vendors have sensibly priced this block to sell in the current market.

Set on 2.5885 hectares of flat land, the two-bedroom home is set well back off the road, has great 360-degree views of the valley, and gets all-day sun. The double brick home was built in 1979 and is spacious and comfortable. Heated by a coal boiler and radiators, the home stays toasty in the winter. The exotic plantings on the property keep the living areas private and the entertaining area gets all day sun.

2 1 1

FOR SALE \$630,000

GST Inclusive

VIEW By Appointment Only

Doug Smith
M 027 543 2280
E douglasjcsmith@pggwrightson.co.nz



All Accounts Matter LTD

For all your accounting and tax needs!

If you are looking for a new Accountant, now is the perfect time! I would love to find out about your business and have a no obligation chat about how I can help you. So don't wait, call me now!

Sonia Emerson Chartered Accountant

GST | Tax Returns | Payroll | Bookkeeping | Cashflow Forecasting
Management Reporting | Rental Statements | Farm Accounts



ACCOUNTING SOFTWARE



2020/2021
Certified
Consultant



SILVER
PARTNER

M: 021 221 1009 | P: 03 541 9005 | sonia@allaccounts.co.nz
367 Wakefield-Kohatu Highway, RD1, Wakefield 7095

www.allaccounts.co.nz

voltz

ELECTRICAL LTD

Julian McGaveston
Registered Electrician

For all your domestic, commercial and rural electrical needs.

T: (03) 522 4488

M: 021 566 645

F: (03) 522 4698

E: voltzelectrical@silkwweb.net.nz

2227 Wakefield Kohatu Hwy. RD2. Wakefield 7096



Tapawera Netball Club April News

This year we have 4 teams from a Women's team, two secondary school teams and a primary team. Younger ones have joined up with Wakefield School again to play at Future Ferns level due to insufficient numbers to make up teams. One of our secondary teams is a combined team made up from Rai Valley girls and a Nelson girl.

One student is continuing her interest in umpiring: Rosa Cameron Year 13, which is awesome to see.

We have a Tapawera Netball Club Facebook so "like" and "follow us." This social media platform will give up to date information on how the teams are progressing.

Tapawera Blue Rock Hops



Thank You to our sponsors Blue Rock Hops Ltd through the support of Glen & Sara, Brian & Sarah Clayton

Emma Bannister, Renee MacDonald, Josie Orr, Laura Eyles, Talia Manson, Aileigh Gray, Larissa Barker, Shana Ross, Amelia Hook, Lizzie O'Donnell

Coch/Manager: Emma Bannister & Renee MacDonald

Grade: Senior 4

Training: Tuesday 6.30pm

Thank you to Chris at Fluid Power Solutions for sponsoring team hoodies.

Tapawera Hotel



Tapawera Hotel is continuing its sponsorship with the top school girls' team. Thank you, Brendan Gleeson and Shara Khan

Rosa Cameron, Jada Jelinek, Kara Page, Katie Hicks, Liv Richardson, Shakaia MacDonald, Caitlin Newport, Holly Jones

Coch: Emma Bannister

Manager: Renee MacDonald

Grade: Collegiate 4

Training: Tuesday 4pm

Tapawera Combined

This year we are playing under Tapawera Netball Club. Our team name is Tapawera Combined. This year Tapawera Combined has a group of seven girls. This group is made up of four Tapawera students, two Rai Valley girls and one Nelson girl. Training day will be on Tuesdays from 4pm onwards. We will be training with the top Tapawera Collegiate team but we will be doing our own skills etc but joining in for some court time with them due to having a small group that can attend training. This year we are in Collegiate 8. Without knowing a lot about this team and how each individual girl plays, I hope that we can all come together and make it a fun season while making our netball skills and working as a team stronger.

Team Coach: Aleisha Oakly

Team Manager: Ali Pronk

Tapawera White

This year we have a Year 5&6 Future Ferns team which is super exciting as it is giving our younger girls the chance to play some netball at Saxton. I am Rosa Cameron and I will be coaching these girls this season. I also play in the Tapawera Hotel team and I will be umpiring games on Saturdays. There are eight girls in the team this year and they will be playing 6-aside modified netball. We have a mix of older and younger players and a range of netball experience but I can already see that they all work really well together and will have a great netball season.

Team Coach: Rosa Cameron

Next Netball Meeting is Tuesday 6th May 7:30 pm
Staffroom

Coaches, Managers, Players and Parents are welcome to attend.

Susan Fenemor

President/Life Member

sfenemortas@gmail.com

Pink Ribbon Fundraiser

LADIES AFTERNOON

CELEBRATING MOTHER'S DAY

Bring your Daughters, Mothers,
Grannies and Girlfriends!

AFTERNOON TEA - BRING A PLATE TO SHARE
FREE ENTRY - BRING CASH FOR RAFFLES

Games

*Treasure
Hunt*

Raffles

SATURDAY 13TH MAY

1-4 PM

TAPAWERA MEMORIAL HALL

**SPOT PRIZE FOR
BEST DRESSED
(THINK PINK!)**

This fundraising event is hosted by Tapawera Connect.
All proceeds will be donated.

Online donations to the Breast Cancer Foundation NZ can be made at
<https://pinkribbonbreakfast.co.nz/page/tapaweraconnect>



Autumn April Forestry Events

There were two well attended local forestry-related field days organised.

The earlier by OneFortyOne (OFO) showcased the research work that is being done in the Donald Creek area (up by Tui going through the Tadmor valley from Tapawera) to study the performance of sediment control practices used in forest harvesting. It was very well attended by people working in the forestry sector, by regional Council (particularly good contributions from Marlborough staff), research scientists and members from the Motueka Catchment Collective. It was good to see at first hand what was being undertaken, to have a strong idea of the data collection work and problems encountered, and then some robust conversations including around the issues of radiata production with its economic imperatives of clear-felling. Sediment traps, infrastructure and consideration of alternative species on erosion prone areas



was discussed. The photo on the right shows the data collection site at one of the weirs where water quality is assessed including sediment load in the catchment harvested last year.

The briefing for the site visit was given in Tapawera before we all jumped in with the allotted drivers of the various vehicles going - which helped make it an even better opportunity to connect with a broad range of people engaged in the forestry sector. One outcome expressed was the need to have more communication with the wider community so that everyone can better understand the complexities that the forestry industry faces going forward, particularly in the light of more extreme weather events and impacts on the wider environment.

The forestry sector was invited to have a page in local community newsletters like the Tapawera Informer and Motueka Valley Association newsletter (!) and OFO talked of providing info on community noticeboards.

An 'Autumn Splendour' field day was held on 16th April at the Appleton family's spectacular arboretum near Wakefield.

It was organised by the New Zealand Farm Forestry Association (NZFFA) Nelson branch.

Robert Appleton is pictured below in front of a redwood of 31 years.



Robert shared his extensive knowledge on 'right tree, right place' and considerations of soils, aspect, altitude etc in selecting areas of their property for focusing on e.g. East coast USA, Japan, Mexican and European. It was great to see areas of their 150ha property dedicated to trees from different parts of the globe. Autumn colours were most vibrant in the Asia and East Coast USA regions!

It was impressive to see the growth rates of the redwoods and learn more about their fire resistance, high carbon sequestration, coppicing characteristics etc and that their roots interlock as compared to Douglas which intergraft. There was good input from knowledgeable attendees, particularly those engaged in small-scale milling and processing of timbers. NZFFA is keen to gain more members and promote the wise use of trees for profit, amenity, sustainability and the environment. If you are interested in planting trees there is a free 'Opportunities with Trees' workshop being organised by them in Richmond on 11th May. Register for it at:

<https://www.nzffa.org.nz/article-archive/opportunities-with-trees-workshops---nz-wide/>

WADSWORTH MOTORS LTD.

- Coach Charters & Tours
- Mini Bus Hire.
- School Transport
- Professional friendly drivers
- Members of the Bus & Coach Association

Over 100
Years of
Service

wadsworthmotors@extra.co.nz
100 Main Rd, Tapawera
www.wadsworthmotors.co.nz

027 4873167



Nelson Tasman
KINDERGARTENS
NGA KOHUNGAHUNGA MAI WHAKATU KI AORERE
For the best possible start

Tapawera Kindergarten

We are a recently established kindergarten located on Tapawera Area School grounds offering:

- ◆ A curriculum catering to individual child's needs that is community focused, respectful and inclusive
- ◆ 100% qualified and registered teachers
- ◆ Open all year round
- ◆ A smooth transition to school
- ◆ Flexible hours
- ◆ Up to 30 hours of free early childhood education for 2-5 year olds

Tapawera Kindergarten is welcoming new enrolments now.

Stop by and have a chat with our teachers between 9:30am and 2:30pm or call/email for more information.

Open 8.45am—3pm, Monday—Friday
021 0878 8070

tapawerakindergarten@ntk.org.nz

We are located at the end of the Primary block, near the back field.



Up to 30 hours
free



The Lady Tradie

Has your husband got a **round**



Spring has sprung
and the grass has riz !
Do you wonder where a handyman is ?
Can't get one ?
Then call " Jen the Lady Tradie "
for all your outside spring clean-up jobs
* Gutters full of leaves;
* Lawns that are starting to bolt;
* Waterblasting those slippery paths
and all that spring growth that just might get
away on you.

*** Local Person * Referees Available ***

Consideration & discount shown towards Senior Citizens

FREE QUOTES

Contact Jennifer

Phone or text: **027 544 2663**

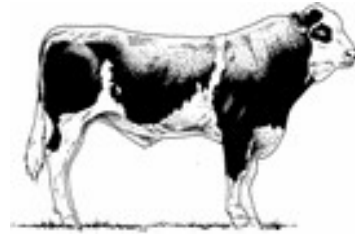
After hours/leave a message: **03 522 4453**

Email enquiries to: jentheladytradie@gmail.com

Gillespie—1

MAF approved

Home kill butchery



03 547 7746

Butcher / journeyman

Specializing in quality small goods

Factory: 111 Bolt Rd, Nelson

Real Estate is our business

SUDOKU

		9	3		8		5	
			1			9	7	
7		3	5	9		8		
	6		8				4	
3		8	9		1	5		7
	9				5		6	
		5		1	7	2		4
	8	6			3			
	7		2		9	6		

LEVEL: Easy

H5

CALL US TODAY

to discuss how we can achieve
great results for you.



BAYLEYS

ALTOGETHER BETTER

VINING REALTY GROUP LTD, BAYLEYS LICENSED UNDER THE REA ACT 2008

Jilly Perry

022 193 9441

jilly.perry@bayleys.co.nz

Lydia Heyward

027 432 8532

lydia.heyward@bayleys.co.nz

Book Discussion Group

Meet: 4th Thursday in month, 10am
 Contact: Paula Davis ph. 5224341

Federated Farmers

Contact: Brent Hodgkinson
 Ph. 5224381

Golden Bush Garden Club

Meet: 2nd Thursday of month
 Contact: President, Irene Griffith
 0212525098, or Shirley Percy 5224924

Golf

Meet: every Sunday, Ladies 9 hole
 every Tuesday
 Contact: Gary Oldham ph. 0278080578

Historical Society

Contact: Barbara Carleton ph. 5224317

Informer

PO Box 15 Tapawera
 Email tapawerainformergmail.com

Justice of The Peace

Peter Phillips ph. 5224313
 John Ellis ph. 021 522429
 Brent Hodgkinson ph. 5224381
 Francine Currie ph. 5224245
 Susan Fenemor ph. 0275224009 (text
 during school hours)

MENZSHED

Contact: John Wilmshurst ph. 5224616

Neighbourhood Support

Contact: Gavin Scoble
 ph. 5224585 or 027 7576665
 Email gavin@neighbourhoodsupport.nz

Netball

Contact: Susan Fenemor ph.
 0275224009 (text during school hours)

Ramblers

Meet: each month
 Contact: Shirley Percy ph. 5224924

Shedwood Hall bookings

Contact: Tania Higgins ph. 5224587

St Andrews Church Stanley Brook

Services every Sunday. Cup of tea
 afterwards.
 Contact: Lee Winter ph. 5224160

St John Ambulance, Tapawera

St John: ambulance – dial 111,
 Contact: 0800 785 646 ext. 3227

Tapawera & Dist. Community Church

Service: St. Peter's Tapawera. 2nd &
 4th Sundays at 3pm
 Contact: Church Office 03 541 8883
 Vicar: Rev. Don Moses ph. 541 8883

Tapawera & Dist. Community Council

Meetings: 3rd Tuesday of month,
 7:30pm Tapawera Community Centre

Tapawera Community Centre

Lisa Carleton ph.0274461017

Tapawera Connect

Contact: Phoebe Quinlivan ph. 021 211
 6730 or 522 4929, email:
tapaweraconnect@gmail.com

Tapawera Creative Fibre

Meet: every Wednesdays, Memorial Hall
 Contact: Dallas Robinson ph. 5224984

Tapawera Food Bank

Contact: Suzzi Lankshear ph.
 0277491063

Tapawera Jujutsu Club

Contact: Tony Hammersley ph. 5224609

Tapawera Music/Country Music Club

Meet: Alternate Sundays, Tapawera
 Hotel 7:30pm
 Contact: Elaine Douglas ph. 5418612

Tapawera Op Shop

Contact: Lisa Carleton ph.0274461017

Tapawera Playcentre

Meet: Mon & Thur, 10am -12:30pm
 Memorial Hall ph. 5224456

Tapawera Rugby Football Club

Bookings: ph. Judy Benjamin 5224445

Tapawera Sport & Recreation Society

Contact: Judy Benjamin ph. 5224445

Tapawera Volunteer Fire Brigade

Contact: Dean Millar Chief ph.
 0279651399; Ted Oakly Deputy Chief
 ph. 0210704033

TAS / Community Library

Mon-Fri 10:30am-1:30pm. Contact:
 Lareen Bonnington ph. 5224149
 Library ph. 5224337/ext. 213

TESSI

Contact: Bruce Whyte ph. 5224550

Toy Library

Open Thursday 10:30am-11:30am
 Contact: Jan ph. 5224102

Visual Arts Society Tapawera

Contact: Dallas Robinson ph. 5224984

Wakefield Police

Constable Jamie White –
jamie.white2@police.govt.nz
 Constable Matthew Berquist –
matthew.berquist@police.govt.nz
 Non Urgent (CRL) – Call 105
 Happening Now – Call 111

**What's on
May**

- 5 Native Revegetation
Establishment Field Day, 675
Tapawera-Baton Road, 1:30pm
- 9 Tapawera Talking Café,
Community Centre, 10-
11:30am
- 11 Garden Club, Gardens of the
World, 95 Clover Road, 11am
- 13 Ladies Afternoon, Memorial
Hall, 1-4pm
- 14 & 21 Cheese making workshop,
Tapawera School kitchen, 1-
3pm
- 16 TDCC monthly meeting,
Community Centre, 7pm
- 20 Community First Aid Course,
Tapawera Rugby Clubrooms
- 20 Articles for Informer close 5pm
- 30 Tea and Talk, Memorial Hall
10:00am - 11:30am

**GP & Nurse at
Tapawera Clinic**

(during school term time):

GP clinics – Mondays
9am – 12 midday

Nurse clinic – alternate
Tuesday mornings - phone
541 8911 for dates

* *Do you have an event you
would like listed in What's On?*

* *Or a community group or
organisation you would like
included in the directory?*

If so, please email
tapawerainformergmail.com