

New Zealand Boxing Champ Christine Gillespie Update

Chrissy has now won the New Zealand Boxing Championship in the National Bantam weight class for three consecutive years. As a result of this, Chrissy is now in the training squad for the Olympic Games in Paris next year.

But it is with great excitement that she has been selected along with four other women to attend the Women's IBA World Championships in India. This is not only huge for Nelson but for the whole of the South Island. Chrissy has worked and trained hard and deserves her selection.

The downside is Chrissy has to fund her trip as there is no money provided to Boxing NZ to cover this. At first Chrissy thought it was just not feasible, but with her determination and her positive attitude she is now going to India in the middle of March.

Chrissy is fundraising and seeking sponsorship but it is hard out there today to raise the funds needed. Chrissy did a 100km walk starting from Richmond, up Spooners, through the Moutere to finish at Appleby. Her challenge was to do it in 24 hours, however she completed it in 15 hours 5 mins. Amazing!!

Being the only woman from the South Island, Chrissy has to go to Auckland for the monthly training weekends and also has to fund this herself. So let's wish her well and look forward to an update.

To all who have contributed to or would like to contribute to her fundraising events or sponsorship, a very sincere thank you.

Chrissy runs her own gym, Hard Knox, in Richmond and has gained her coaching certificate. She runs children's classes on Mondays and Thursdays and adults classes Tuesdays and Thursdays in Richmond, and in Tapawera she runs a children's class on Wednesday afternoons and a women's class in the evening at the Rugby Club rooms.

Chrissy has three boys going to their first fight in Christchurch at the end of March. She also runs a youth class for Waimea College students through their "On Track" programme. This has been very successful and two boys from this programme are on track to fight in Christchurch.

Quote from Chrissy, "I like trying to help people change their lives, but they don't have to hop in the ring to fight, just take one core thing out of it and do something positive."

Well done Chrissy, congratulations on your selection for the World Championships!



Senior's Snippets

with Janine Leeden

7th March is Census night! As a rural and remote region, we really need to do our best to engage with this process so as to prove to the Government that we have genuine, pressing needs that are worthy and deserving of their urgent attention. We too have homelessness / living affordability / transport / health care / aged care and educational needs that impact everyone in our district! Each person will have the opportunity to fill in either a paper form or to go online to complete it at www.census.govt.nz. This can be completed at any time up to and including the 7th March and is for every person living in NZ on that date.

Our **March** Tea and Talk will be on Tuesday 28th March at 10-11.30am. \$3 gets you morning tea and a guest speaker, as well as lots of socialising.

We will have Wendy Strawbridge from Health Action Trust (the same organisation we had Chris Allison – who we couldn't get enough of) coming out to speak to us on the subject of 'Wellbeing and self-care'. I believe this is particularly pertinent for those caring for others, especially spouses or family members on a full-time basis. If we are not making time to be replenished and revitalized ourselves, we won't be able to do our best when caring for others!

Our weekly Sit and Be Fit class continues strongly each Friday at **10am-11am** at St Peter's church, Main Road, Tapawera. Again, a koha guide of \$3 per class helps keep us self-sustainable. We've got a great group of regulars, and have visitors that come back when they're in town, and much fun is had each week.

Sharon Webber, our Hearing Therapist, is keen to book another clinic here at the Health Clinic on Wednesday, 29th March. **Please contact her on 0800 008011 to book an appointment. Again, this is a free service available to anyone over 16 years of age**, and a NZ resident. The organisation name has changed to Your Way Kia Roha.

Greig Price, Podiatrist, is willing to visit clients (of all ages) in their homes in Tapawera and surrounds. If enough people are interested we can cut the costs even more and arrange for him to utilize the Health Clinic in Rata Ave. **His email is: info@mobilepod.nz and phone number 022 419 0205 to book appointments.** Let's utilize this service so Tapawera stays on his radar! We need to keep on our toes.



All Accounts Matter LTD

For all your accounting and tax needs!

If you are looking for a new Accountant, now is the perfect time! I would love to find out about your business and have a no obligation chat about how I can help you. So don't wait, call me now!

Sonia Emerson Chartered Accountant

GST | Tax Returns | Payroll | Bookkeeping | Cashflow Forecasting
Management Reporting | Rental Statements | Farm Accounts



ACCOUNTING SOFTWARE



2020/2021
Certified
Consultant



M: 021 221 1009 | P: 03 541 9005 | sonia@allaccounts.co.nz
367 Wakefield-Kohatu Highway, RD1, Wakefield 7095

www.allaccounts.co.nz



TOWN & COUNTRY

VET

"...for all creatures great & small..."

**Regular Tapawera visits
discounted mileage
T&Cs apply**

Ph 544 1200

info@tcvet.co.nz * www.tcvet.co.nz

**25 Edward Street, Wakefield
35 McGlashen Avenue, Richmond**



24 hour emergency vet

RURAL POST, RD 2 Wakefield

Contact Nick & Jackie Costley for all your RD 2 Wakefield postal needs.

Including prepaid envelopes, stamps, courier items and local freight from Wakefield, Dovedale and Tapawera. Prescriptions from Wakefield.

Phone 0275418581

Mark & Tania Gill
T/A MTJ Transport
RD2, Nelson
NZ Post Rural Contractors
Servicing
Motupiko-Korere-Kikiwa-Tophouse-St Arnaud-Glenhope

For all your Postage, Milk & Courier Freight
Operating 3 Days Weekly
(Monday-Wednesday-Friday)
Departing Nelson 8.00am
Phone 546 6295

Material & adverts for Informer

All material is to be sent to either:

Informer, PO Box 15, Tapawera, 7055
or email- tapawerainformergmail.com

To be received by 5pm
20th of the Month

If emailing a word document please send in Word as an attachment using Font Aerial Narrow size 11
If sending an advert please save as a jpeg before sending.

Please check your emails to see your article/advert has been received as sometimes there needs to be alterations.

Advertising rates for Informer

Standard advertisement	
1/4 page advert	\$25
1/2 page advert	\$35
Full page advert	\$50

Adverts that require editing may cost extra

The Informer is produced and published by the Tapawera and Districts Community Council, PO Box 15, Tapawera, 7055;
email: tapawerainformergmail.com
Circulation 635
Editor: Gill Hammersley
The Editor and Publisher try to ensure information published is truthful

and accurate, but do not accept any responsibility for errors or omissions, or for any consequences of readers' relying on the information published. Opinions expressed by contributors may or may not be endorsed by the Editor or Publisher.
All material submitted, whether editorial or advertising, is accepted at the discretion of the Editor and the Publisher.

Tapawera Memorial Recreation Reserve Management Committee

AGM 20th March 2023 7:30 pm

At the Memorial Hall, Main Road, Tapawera.

All groups using the memorial Hall or the Reserve Grounds need to have a representative on this committee, allowing your group's voice to be heard locally and at TDC.

We need your support to keep these facilities.

Community members also welcome.

Any queries, phone Roger Bint on 5224265. Evenings best please between 7:00 and 9:00pm.

Thank you, Roger Bint (chairman).



Library News

The library hours have changed, they are now Monday to Friday 10.30 to 1.30pm. Community members can still come into the library outside of these times by obtaining a key from the office and leaving their details at the desk. This is during school hours, 9-3.30pm.

Our new Richmond collection will just about be on the shelves by now. We take a long term loan of about 200 books from Richmond Library twice a year. So if you've read all 4000 of our adult fiction and non-fiction books then there will be something new for you.

It's hard to believe but there are still community members who don't know our library is here for the community as well as the school. We have a fantastic collection of fiction as well as non-fiction, our autobiographies section alone numbers over 200 books. Our young adult books make great reading too and are often a shorter read for people who are short on time.

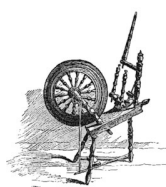
Do come in and have a browse, I think you'll be pleasantly surprised when realising you don't have to travel out of Tapawera to find some good reading.

If you want to see our full catalogue from home, our webpage is nz.accessit.online/TPW00 (last two digits are zeros). Anyone can log in as a guest and if you are a member and wish to view your account or your children's, just call or email us for your membership number.

You will find us behind the tennis courts at the school. Our hours are Monday-Friday 10.30-1.30pm.

Phone 5224337 ex 213. Email library@tapawera.school.nz Website as above.

Happy reading folks
Laree for the library team



Creative Fibre Tapawera

Our year started with our annual Open Day on the 1st of February. A happy and successful day with many visitors from around the Top of the South Creative Fibre groups. It was lovely to welcome them back to Tapawera after the previous year was adversely affected due to Covid.

Our Group Challenge this year is to choose three colour cards, using those colours to make something in a craft that we have not tried. Hmm, could be very interesting for yours truly.

We are finalising our programme for the year, which will include visits to other groups, a dyeing day, and some learning workshops.

So early in the year we don't have a lot of news, however the invitation to join our group is always open. Whichever Craft you do, knitting, sewing, spinning, quilting, or felting, hand stitching or whatever takes your fancy, you are welcome to come along on Wednesdays 10am at the Memorial Hall, have a look at the group, have a cuppa, meet some interesting people and maybe learn a new skill craftwise.

Stay safe and well folks.

Dallas.



Jujutsu Martial Arts Class Tapawera

New beginners welcome to come and train with us in a friendly atmosphere.

In the school hall on Mondays

Youth (aged 12-16) 5.00pm to 6.30pm

Adults 6.30pm to 8.00pm

\$2 per student for each class

For further information please contact

Tony Hammersley

Tel: 5224609 or email:

tonyandgill112@gmail.com

**Autumn
Workshops
are coming!**



Tasman Bay Chiropractic
64 Oxford Street Richmond



Keeping you in the game since 2002

Referrals, families and
all new clients welcome

Visit our website or call for more information

tasmanbaychiropractic.co.nz

03 544 4554

Monday-Saturday

Find us on 



Real Estate is our business

SUDOKU

	8							4
			5		4			1
			8	3	6		5	
7	9			4				
5			6		8			9
				2			4	3
	7		2	5	9			
1			4		3			
3								2

LEVEL: Hard **H3**

CALL US TODAY
to discuss how we can achieve
great results for you.



BAYLEYS	Jilly Perry	Lydia Heyward
ALTOGETHER BETTER	022 193 9441	027 432 8532
VINING REALTY GROUP LTD, BAYLEYS LICENSED UNDER THE REA ACT 2008	jilly.perry@bayleys.co.nz	lydia.heyward@bayleys.co.nz



Opening night for our 20th Anniversary was hugely successful, some of our previous members exhibited as well as current members. Kaye Register was our Guest Artist and opened the Exhibition with a brief speech on the history of VAST.

A very special time was next when Shirley and Kaye welcomed Geraldine Carleton to the stage and presented Geraldine her Certificate for Life Membership to Vast.



Kaye and Geraldine then invited Kirsty and Barbara both also founding members to come and cut the cake.



My grateful thanks to Judy Hodgkinson for icing and decorating the cake, a beautiful work of Art itself.

Thanks also to Jo Hillerby for getting the cake to Judy and picking it up for me.

Thanks also to our wonderful Postie Nick who made the flyer drop around the district for us.

VAST is very grateful to our Sponsors, Tapawera 4 Square, Impressions, Tapawera Rugby Club, Tapawera Friends of the School and Sherry Valley Apiaries.

Congratulations to Angie Miller who won the Peoples Choice Voucher from Impressions.

All Raffles have been drawn and all winners notified. Many thanks to everyone who support VAST by buying our raffles.

Many thanks to Elliot and the Spouses of members who were tireless during dismantling at closing.

Finally a huge thanks to all who visited the exhibition, both local and visiting caravaners.

Dallas Robinson Sec. VAST



The Tapawera Autumn Workshops are coming up soon! These are a great opportunity to learn some new skills and connect with other like minded people in your community.

These are the themes:

- Preserving
- Making different types of cheese
- How to maintain your tools well (chainsaw, lawn mower, weed eater...)
- Food Foraging - identifying and harvesting food that grows around you
- Soil Health and Composting
- Budgeting

Dates coming soon!

There will be a small charge for each of the workshops to cover expenses, and there are 4 sponsored spots (free) on each course for those in financial hardship

Keep your eyes on the Community Noticeboard, Tapawera Connect Facebook page and Tapawera Community Website (www.tapaweracommunity.nz) for details.

If you want to receive the program by email, please send us a request to Ju (jugriese@gmail.com).

HANDYMAN

- * General property maintenance
- * Clean out/tidy up
- * Water blasting
- * Gardening
- * Chain sawing
- * Repairs
- * Demolition
- * Any farm work

Fair hourly rate. Honest and hard working.

Local references available.

Please enquire to Jeremy Ellis (03) 522 4460

voltz

ELECTRICAL LTD

Julian McGaveston
Registered Electrician

For all your domestic, commercial
and rural electrical needs.

T: (03) 522 4488

M: 021 566 645

F: (03) 522 4698

E: voltzelectrical@silkwweb.net.nz

2227 Wakefield Kohatu Hwy. RD2. Wakefield 7096

Nelson Tasman
KINDERGARTENS
NGA KOHUNGAHUNGA MAI WHAKATU KI AOREA
For the best possible start

Tapawera Kindergarten

We are a recently established kindergarten located on Tapawera Area School grounds offering:

- ◆ A curriculum catering to individual child's needs that is community focused, respectful and inclusive
- ◆ 100% qualified and registered teachers
- ◆ Open all year round
- ◆ A smooth transition to school
- ◆ Flexible hours
- ◆ Up to 30 hours of free early childhood education for 2-5 year olds

Tapawera Kindergarten is welcoming new enrolments now.

Stop by and have a chat with our teachers between 9:30am and 2:30pm or call/email for more information.

Open 8.45am—3pm, Monday—Friday
021 0878 8070

tapawerakindergarten@ntk.org.nz

We are located at the end of the Primary block, near the back field.



Up to 30 hours
free





Golden Bush Garden Club



The February meeting was at Geraldine Carlton's beautiful new Riwaka garden. The weather was bright and sunny and so was Geraldine's garden. It is hard to believe what has been achieved in such a short time. There was so much to see – the spectacular begonia house, old established trees, cheerful floral displays and a great vegetable garden. All in all a very enjoyable day.

Welcome to new member Maureen Kingsley. Sadly our Secretary Janine Leeden has had to resign. Janine was presented with a rose and gift card for all the good work that she has done. Eve Heritage has kindly stepped in and the Secretary duties will be shared between her and the other committee members for a while. Marg Hunter from the Lakes also had to resign recently – thank you both for your time serving on the Golden Bush Garden Club Committee.

Next meeting is Thursday March 9th 11am at Rachel and Phil's Villa Grove Estate, 117 Wakefield-Kohatu Highway (near Willowbank, same side of road). Parking is up the drive, but carpool where possible. Bring chair, lunch and thermos as urn will not be operating. We will have our usual auction and raffle. Rachel and Phil have a lovely garden and there will also be delicious olive oil for sale. Cash sales, no Eftpos sorry.

In April there will be a bus trip (rain or shine) leaving Tapawera Village Green 9am. Cost is \$20 members and \$45 non-members. This covers cost of the bus and your lunch – pay for your own drinks. Numbers are filling fast – we will still be taking names and money at the next meeting or contact Shirley 5224924 to add your name to the list, you can also pay online.

Lastly Tapawera School would love to give your old clean plastic plant pots a good home – they can be left outside the office or near the gardens.

Happy gardening.

Shirley



Tapawera
SPORT & REC

THANK YOU!

Sport and Rec would like to thank all the people that helped out in many ways for their latest fundraisers over the "Caravan" weekend. We had all our roasts donated by our Community, we had help in the kitchen, we had pool supervisors. Great combined effort by all – Thank You!



Tapawera
SPORT & REC

Sport and Rec Colour Fun Run / Walk

Sunday 12th March 2023 at 10am
Meet at Tapawera Rugby Club
\$5 Entry – Wear something white!
Spot Prize for Best Fancy Dress

Available for purchase afterwards – Sausage Sizzle \$3

Drinks \$2



COMMUNITY
TRANSPORT TRUST
Nelson Tasman

Tapawera 'Satellite' Meeting on Future Transport Strategy

Community Centre, Monday 6th March, 1-4pm

The Nelson Tasman Community Transport Trust (NTCTT) is a charitable trust working to provide and operate a transport service for the community. Its aims include transporting those needing assistance with transport (especially when no other service is available) and reducing the community's reliance on private cars and fossil fuels. Currently, NTCTT operates the Motueka Coastal Bus, Wakefield Community Transport and Māpua Willing Wheels. From July, the Council will also be introducing some bus services amongst measures encouraging travel options besides private car use.

The Tapawera area community is invited to be part of the process of NTCTT updating its strategic direction for the next three to five years. We will have a 'satellite' meeting linked to the main strategic planning meeting in Richmond on 6th March. It's a chance to learn what is happening/ planned and to consider how we can link in over the next few years. So, if you have an interest to see some new transport initiatives that might help our community, whether assisting those with limited access to transport, ways that we might reduce our carbon footprint, or build on existing initiatives, please come along and join in the conversation!

If you would like to come, please get in touch with Jo (027 7224411) or Phoebe at tapaweraconnect@gmail.com.

If you can't come but would like to make an online contribution, you can do so at:

<https://survey.sogolytics.com/r/6e7SRC>

Providing gentle guidance when you need it most.



**Simplicity
Funerals**

Simply respectful. Simply affordable.



Anna Loach
Manager / Funeral Director
Dip FD Reg. FDANZ

**NELSON & TASMAN WIDE,
WE'RE PART OF YOUR COMMUNITY**

Phone 03 929 5145 | 276b Queen Street, Richmond
nelson.simplicity.co.nz



Motueka Catchment Collective

Here we are fortunate, let's not be complacent

The devastating scenes from cyclone Gabrielle are sobering and the damage and impact on people's lives & livelihoods will be long lasting. The rallying around to help each other is testament to the resilience of the communities affected and how people positively respond to such events in the immediate aftermath. It's also only January since the extensive floods and damage from forestry waste yet again occurred in the Tolaga Bay area - and it's a complex issue with the local employment in the forestry sector and then the downstream damage from the forestry slash and erosion.

We've been fortunate that we've not had an 'atmospheric river' pass over us as they've had, and that Nelson had last year. But there seems to be more frequent weather events occurring these days with climate warming and we all need to be doing our part to respond; working out how to limit global temperature rises by reducing our carbon emissions and how we can best adapt to these fiercer weather patterns and impacts.

March 9th is an opportunity to learn first hand from Hawkes Bay Sheep and Beef farmer, Greg Hart, who has been transitioning his farm from traditional sheep and cattle farming to a more economic and biologically resilient farm. To attend the 'Our Regenerative Future' session that is being organised by Annette Litherland of NZ Landcare Trust with Greg Hart – please register at <https://www.surveymonkey.com/r/XDGS267>

When: Thursday 9th March 2023. 6pm to 8 pm

Where: Moutere Hills Community Centre, 1539 Moutere Highway, Upper Moutere, 7175.

Carsharing is encouraged!

(Greg has been developing diverse, integrated, regenerative farming systems; stacking layers of different production streams including grazing alongside agroforestry carbon, and restoring ecosystems through tree planting, sequestering carbon from the atmosphere, and building healthy soil using holistic grazing techniques. He is on the way to developing an economically and biologically resilient farm system and also has experience in using biochar which is produced in large volumes in Tasman. More information on his farm is at <https://www.mangarara.co.nz/the-farm>.)

We too have forestry on highly erodible soils and slopes. The recent workshop hosted by TDC to discuss land management options for forestry on Separation Point Granites with community groups had a good number from

the Motueka catchment attending. Council had had another one with the forestry sector. It was good to see Council calling such a meeting and that there was consensus that change is needed and sooner rather than later. The issue is more of the 'how'. Council will be producing a report that will be available on their website from the consultations.

For now, local Collective related activities like the propagation group are still ongoing but in terms of talks and organising more substantial events, we are waiting to have the recruited catchment coordinator in place to take the organisational lead for those! The recruitment process is still ongoing as at February. Since it is the major budget item of the capacity and capability funding that we have received, then we need to make sure that we recruit the best candidate and the process, as with many things, is taking a bit longer than we anticipated. Hopefully next month we will have someone on board! We've also had a good number of people apply to be on our Steering Group but relatively few from the upper catchment. Since much of the funding that we've succeeded in applying for is targeted at supporting farmer landholders in efforts to improve management practices, particularly those that benefit catchment health, it's a shame that there's not more interest from the Tapawera and valleys community given that that is where more of the larger farms are. If you are interested, get in touch via motcatchment@gmail.com and then happy to have a chat.

Jo Leyland

Co-Convenor



Kia ora Tapawera and our Tamariki. We have a great variety of toys for our Tamariki still. Want your Tamariki to have a fun weekend? We have great hire options available such as a bouncy castle, water slide, teepee tent, bikes and ride on cars, and many more fun toys to hire for children to build their imagination and have fun over the weekends! So come down to the toy library to have a look!

We are still on the lookout for any photos of your Tamariki playing with the hired toys that you would love to share and are ok with being public on our Facebook page or Informer? We would love to see some so you can send a message to our Facebook page.

Hours and days are still the same, Thursday morning 10:30 -11:30, and keep an eye out on our Facebook page regards opening on a Saturday morning or contact Jan on 0273915424

WADSWORTH MOTORS LTD.

- Coach Charters & Tours
- Mini Bus Hire.
- School Transport
- Professional friendly drivers
- Members of the Bus & Coach Association

Over 100
Years of
Service

wadsworthmotors@xtra.co.nz
100 Main Rd, Tapawera
www.wadsworthmotors.co.nz

027 4873167



TAPAWERA ELECTRICAL

Tony Stephens

Registered Electrician

Ph/fax 5224257
0276249489

All electrical needs
Domestic & Rural

Wiring, faults, some home appliance repairs
New heat pump installations



Free Quotes
Competitively priced



Relaxation Deep Tissue
Deep Flow Alignment Bodywork
60 min Massage \$85
90 min Massage \$120

Ph/Text or Fb message for an appointment
Gift Vouchers Available!

Sam 027 5224189
Hannah 027 3142970

4827 Motueka Valley Hwy, Tapawera



Neighbourhood Support Top of the South

WHAT IS NEIGHBOURHOOD SUPPORT?

We work alongside New Zealand Police and other partners to equip neighbourhoods to improve safety, be prepared for emergencies, and support one another so that our communities are great places to live.

Top of the South Neighbourhood Support has been working with the Tapawera community since June last year and we now want to set up and support street groups in Tapawera Village. We're starting by recruiting members in the village. Once we have enough members in different streets we will set up street groups and then look for village residents to be street contacts for neighbours nearby. (Later we'll look at our rural areas).

Why join?

A well-connected community helps to improve the safety, resilience, and well-being of all residents. When you join a Neighbourhood Support group you will:

- Have a great way to get to know the people that live around you.
- Receive emails and alerts that will keep you up-to-date with news from our community partners, including New Zealand Police.
- Gain tips and resources (such as street signs and letterbox / window stickers) to improve your household and neighbourhood safety and deter crime.
- Learn how you can be better prepared for emergencies.

By working together we can support each other, solve local issues, and make our neighbourhoods safer and more welcoming. **Best of all, it's FREE to join!**

How do I get involved?

It's easy! Go to <https://topofthesouth.getsready.net/> to join Neighbourhood Support. Or fill in the form on the reverse and drop it in to the Tapawera Community Op Shop.

Once a group is set up you get to decide what works best for you. You can share the information you want with who you want and your group can meet when and how it likes.

You could:

- Meet regularly or as needed.
- Stay connected online or by email.
- Get organised and undertake some neighbourhood projects.
- Host street barbecues or events.
- Volunteer to be a street contact.

It's up to you as a group.

If you have questions or want to know more contact Gavin Scoble - 027 7576665 or gavin@neighbourhoodsupport.nz.

Strengthening Neighbourhoods, Connecting Communities



Neighbourhood Support Top of the South

JOIN NOW

Please return completed form to: **Tapawera Community Op Shop (Community Centre)**
Main Road
Tapawera

Contact Details

First Name: _____

Last Name: _____

Flat / Unit Number: _____ House Number: _____

Street Name: _____

Town: _____

Postcode: _____ Home Phone: _____

Work Phone: _____ Mobile Phone: _____

Email Address: _____

Emergency Contact: _____

Household Information

Names of Other Household Occupants: _____

I am interested in becoming a street contact and would like more info: [Yes] [No]

Additional Information

Please provide important details you would like to include as part of your household / personal application such as medical or mobility needs, list of pets, any special skills, etc.

Privacy Disclosure: By completing this application you agree to have your information shared with your local Neighbourhood Support group / organisation including Coordinator(s) and Street Contacts who may contact you directly as needed through email and telephone communications. This information is collected and held in accordance with the Privacy Act 2020.

Our Local Biodiversity

I already know that we are very lucky in Tapawera. We are situated within less than an hour's drive to two national parks. We have a special piece of remnant forest within walking distance of the village. Many of our farms also have patches of remnant bush with some awesome farmers who work hard to look after them. We have a river (plus tributaries) which is, overall, in reasonably good condition.

However, on Christmas Eve, my family and I got to see what we think is **SOMETHING TO SHOUT ABOUT!!** As we stood by the Motueka river, we watched pied stilts, black-fronted terns, and black-billed gulls either nesting, looking after chicks or showing courtship behaviour; all within walking distance of our place in Glenrae. It was a fantastic experience, especially as we realised many of the birds we had seen, are not only endemic (unique to New Zealand) but also nationally endangered or declining.

To find out more, I got in touch with Paul Griffiths, the Nelson regional representative for Birds New Zealand. Since then, I have been lucky enough to receive several visits from some local (to the region) birders, including one from David Melville (a world-renowned shorebird expert who lives within the catchment – google him if you have not heard of his work) and two from Paul himself who, on his second visit, brought with him the well-known nature photographer Rebecca Bowater. They all were generous with their time and knowledge, and agreed that what we were seeing was very special!

As I continued to research the river, I read that as a freshwater wetland site of special wildlife interest, the middle-braided reaches of **the Motueka riverbed around Tapawera is considered to be a site of special wildlife interest with moderate-to-high value** as it is "used seasonally for breeding by coastal species including the banded dotterel, pied stilt, Paradise shelduck, South Island pied oystercatcher and black-fronted tern." (The Motueka and Riwaka Catchments technical report, appendix 2, compiled by L. R. Basher, 2003).

I know that our freshwater is important, and that we need to look after it (which is why I am part of the Motueka Catchment Collective), but it was exciting to know that we have a special piece of braided river; some of it within easy walking distance of the village, that is providing crucial habitat for many river birds, including the tarapirohe (black-fronted terns) and tarāpuka (black-billed gulls) who are nationally endangered and declining respectively. I think it is something that we, as the community, should be proud of and getting on board to help look after.

Why should we help and how? These birds are at risk because of loss or degradation of habitat, invasive predators and the woody weeds growing on the riverbed that provides cover for them. Unfortunately, one of the other main threats is of course us and our behaviour! Being

aware and changing the way we behave when they are nesting can make a big difference. Whilst having access to the river is a great opportunity for people to swim, hang out, and even spot birds(!), we can learn what not to do during nesting seasons.

A few weeks ago, I got to watch a group of young people in a 4wd vehicle go onto the riverbed and through both the tern and gull nesting areas, laughing as the distressed birds dive bombed them. It was awful to see, and I felt completely helpless. Afterwards, I realised that there were actually a few options that I could have used. Under the wildlife Act 1953, disturbing protected birds and destroying nests is an offence and this type of behaviour could have resulted in imprisonment and/or a fine of up to \$100,000. Locked gates might also have made a difference, but whilst we could have done that ourselves (recommended by TDC afterwards) or reported the driver, we did neither. Instead, my partner and my neighbour had a yarn with them about why these birds matter. This is because preventative measures need to work alongside other strategies that encourage better understanding and behaviour change, as they are likely to have a lot more impact in the long term. If we want to make a difference as a community, we can do our best to make sure that these taonga species can continue to come back to nest in the future. If you are interested in finding out more or want to get involved in supporting them through recreation and education projects, please get in touch at katerich73@gmail.com.

Kate Radloff



Tarapirohe (black-fronted tern). Motueka river at Tapawera taken by Paul Griffiths, January 2023.



Tarāpuka (black-billed gull) with juvenile. Motueka river at Tapawera taken by Paul Griffiths, January 2023.

The Lady Tradie

Has your husband got a **round**



Spring has sprung

and the grass has riz !

Do you wonder where a handyman is ?

Can't get one ?

Then call " Jen the Lady Tradie "

for all your outside spring clean-up jobs

* Gutters full of leaves;

* Lawns that are starting to bolt;

* Waterblasting those slippery paths

and all that spring growth that just might get away on you.

* **Local Person** * **Referees Available** *

Consideration & discount shown towards Senior Citizens

FREE QUOTES

Contact Jennifer

Phone or text: **027 544 2663**

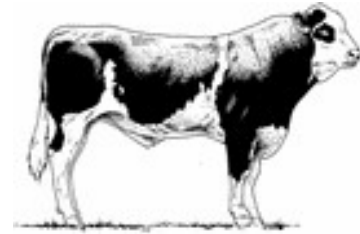
After hours/leave a message: **03 522 4453**

Email enquiries to: jentheladytradie@gmail.com

Gillespie—1

MAF approved

Home kill butchery



03 547 7746

Butcher / journeyman

Specializing in quality small goods

Factory: 111 Bolt Rd, Nelson

Yoga with Josie - Tapawera

Wednesdays 6-7pm

Tapawera School Music Room

School Term Time Only

Term 1: 1st February - 5th April

All Abilities Welcome

BYO Mat

\$12 per class or \$100 for the term
(10 classes)

50% discount for students

Contact Josie: 027 612 5813





Tapawera Area School News

Issue 1

February 16 2023

Principal Comment

Kia Ora e te Whānau

Thank you to everyone for a great start to 2023. I have felt so welcome and appreciated the kindness everyone has shown while my whānau and I have settled in.

The whānau have had lots of fun exploring the local area over the last two months, with swimming at Rabbit Island and catching the waves at the Richmond wave pool at are top of our list of things to do.

Over Waitangi weekend, we visited Willowbank Heritage Park. The girls loved dressing up and experiencing the old-time shops. They didn't like the old school and are happy they went to school in our times, not back then.

I am proud to be the Tumuaki of Tapawera Area School! I am pleased that our students have returned to school with a 'can do' attitude, and most are ready to learn. It is lovely to walk around the school and have our students smile and greet you as you pass. Our students are a credit to us all! Last year some feedback was gathered from whānau and students. This has helped us formulate an annual plan focusing on maths progress and achievement, Positive Behaviour for Learning (PB4L) and attendance and

engagement. Many initiatives will be completed throughout the year to enhance these areas. However, moving to future thinking, we look to see how we can grow our school and students even further. This is best achieved by reflecting on the past to see the future more clearly "Ka mua, Ka muri" Looking back to move forward. Over the next few months, we will complete reviews and gather 'voice' from students, staff and the community to help us formulate a strong vision and strategic plan for the next three years. We welcome feedback to help us grow as a school and will be giving opportunities for all to have a say in the future pathway of our school

Hui with the New Principal

*I will hold regular hui with community members to give these feedback opportunities. The first is an opportunity to make connections called "Ko wai Au?" - the Principal, the Wife, and the Mother. This is an opportunity for community members to have a coffee and get to know me better and my leadership. This will be held on **Thursday, March 2, from 9.00 am to 10.00 am** in the staffroom. ALL WELCOME!*

Thank you for your ongoing support and aroha for our school.

Sarah Coard

Principal

principal@tapawera.school.nz



Sarah Coard

Other School News

Teacher Only Day Monday, April 24

A warm welcome to **Emily Finnie**, who is teaching in the Year 5-6 classroom, Rima Kaka and to **Todd McAuley**, who is leading in the Year 7-8 classroom, Stanley Brook and Outdoor Ed in the secondary. He has also taken on the Year 7-10 Team Leader role.

Unfortunately, due to a significant crack, the **small pool** will not be in action this beginning half of the year.

What a fabulous **Mihi Whākatapu** we had on Thursday to warmly welcome our new Principal, Sarah Coard. We would like to thank Aaron Hemi for whaikorero from Ngāti Apa ki te Rā Tō, Ani Davey for kaikaranga, Carolyn Ellis (BoT chair), Stephen Haunch (Sec DP), Rosa Cameron (Student Rep on BoT) for speaking on behalf of our kura. Special guests Damien O'Connor (MP,) Stu Bryant (Councillor TDC), four generations of the Anglesey family, John Armstrong, Janice Gulbransen and Andrea Williams from the Ministry of Education, Andrew Murray (our Statutory Manager) whānau & friends of our kura.

Check out our **Facebook** page. Join the **Skool Loop** to keep up to date with in-school events.

The Tournament team, who will travel to **Rai Valley** in week 8, are up and running and training for the event.



Every BODY is better with Bowen

Bowen is back in your community, and is operating from the original clinic at the green door, next to our OP Shop entrance. I welcome my previous clients and look forward to meeting and treating new clients.

I have been a registered and accredited practitioner since 2007 and continue to keep up my ongoing education/practitioner hours.

Recently I have completed advanced training and over the past 3 years have been regularly treating pregnancy related conditions, along with baby Bowen, as I am a registered Midwife.

What is the Bowen Technique?

Bowen is gentle bodywork, with profound results. It stimulates the body to relax, realign, reset and rebalance itself. Inputs into the muscle, fascia and connective tissue result in a self healing process. Long ongoing treatments are not necessary, as Bowen will correct or markedly decrease the dysfunction/pain of the presenting condition with a few sessions.

Consider Bowen for any condition, including:

- Back/neck pain/Jaw problems/frozen shoulder/Pelvic/Hip pain
- Tight Hamstrings/Sciatica/Plantar Fasciitis/Shin Splints/Ankle/Knee problems/Bunions
- Sports injuries; Tennis elbow/Carpal tunnel/Disc injuries
- Asthma/Hayfever/Sinus Problems/Reflux/digestive Problems
- Migraines/Headaches/Insomnia/Constipation/Crohn's Disease/IBS
- Menstrual/Endometriosis/Menopause symptoms/Infertility
- Urinary problems; Urinary Tract infections (UTI)/Bedwetting/Incontinence
- Pregnancy conditions/Postpartum/Babies: Colic, Reflux, unsettled.

For enquiries/appointments please contact

Lia Williams 021 02640187 / 5224 666
Registered Bowen Practitioner NZBTI and Registered Midwife RM
liawilliams.mw@gmail.com
<https://nzbowentherapy.org.nz/>

March 8 Athletics Day
9th March Parent Teacher Student conferences

The library opens daily at 10.30 am and 1.30 pm

The house leaders for **Baton** are:
Emily Walker, Flynn Morgan, Skyla Reeve, Tamati Bright, Lachlan Wills

The house leaders for **Motupiko** are:
Kate Mytton, Rosa Cameron, Shakaia Kennett - MacDonald Kiana Collins

The house leaders for **Tadmor** are:
Cheyenne Phyn, Sarah Jones, Riley Hook, Levi Bennett



House leaders

The year 11 Hospitality class were instructed by **Michael McMeeken**, executive chef at **Falcon Brae**, in knife skills recently.

Term Dates 2023

Term 1st January 31–6th April
 Term 2nd April 26 – 30th June
 Term 3rd July 17 – 22nd September
 Term 4th October 9–Dec13

Syndicate Leaders

Denise Shellock – Year 0 - 6
 Todd McAuley – Year 7 -10
 Tracey Mytton – Year 11 -15

Primary Staff

Jill Hall, Sabine Reinert, Denise Shellock, Emily Finnie,
 Tanya Snackers, Gordon Baird, Josie Orr, Mikayla Eyles

Secondary Staff

Kellie Doreen, Todd McAuley, Sylvia Tovizi, Vince Fox, Jeff Rowland, Liesel de Kriek, Tracey Mytton
 Sheryl Culling, Susan Fenemor, Stephen Haunch, Gemma Walsh, Renee MacDonald

School Contacts:

Principal: Sarah Coard
 Senior Leader Primary: Tanya Snackers
 Senior Leader Secondary Stephen Haunch
 Executive Officer: Susan Ellis
 Office / Reception: Barbara Carleton
 Phone: (03) 5224337
 E-mail: sellis@tapawera.school.nz
 Website: www.tapawera.school.nz



Anglesey family, 4 generations

by Susan Fenemor

COME TO A TALKING CAFÉ

Connect with your community



Talking Cafés are an opportunity to meet people, make new connections and learn more about your community.

Pop in for a quick cuppa, or stay for a longer conversation with friendly people. All welcome, no bookings required.

Upcoming Tapawera Talking Cafés:

Tuesday 14th March, 10-11.30am

Tuesday 11th April, 10-11.30am

Tuesday 9th May, 10-11.30am

Tuesday 13th June, 10-11.30am

For more details:
wellby.org.nz
or phone (03) 546 7681



Looking for a new business opportunity?

Quick Start
Business Opportunities Available!



Get your work-life balance right with a CrestClean Franchise

CrestClean is NZ's largest franchise system, with more than 700 operators nationwide. Over the past 25 years we have become a market leader in the cleaning industry, and the demand for our cleaning services continues to grow. We need more teams now!

With CrestClean you will enjoy regular contract revenue without facing the normal hassles and burdens of running your own business. There is no selling required.

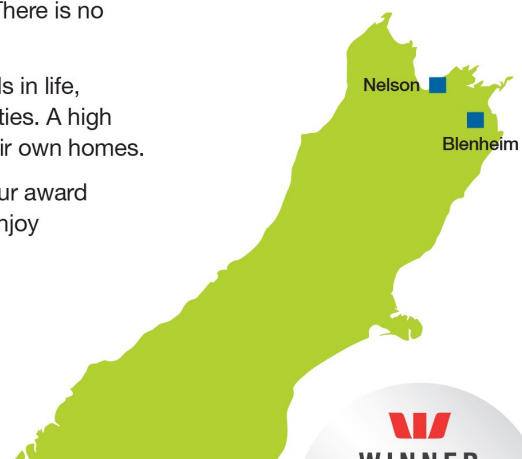
A successful business opens the door to achieving financial goals in life, such as home ownership, investments and owning rental properties. A high percentage of CrestClean franchisees have been able to buy their own homes.

We have finance options available to help get you started, and our award winning franchise system gives you lots of support so you can enjoy operating your own successful family business.



Watch our franchisees' stories in 8 languages

Franchise opportunities are available now in Nelson and Blenheim



Crest Clean



Call Barbara on 027 706 7095 or visit our website to request our Franchise Information Booklet
0800 273 780 | crest.co.nz

WINNER
SUPREME AWARD
Westpac Franchise System of the Year 2021



Book Discussion Group

Meet: 4th Thursday in month, 10am
 Contact: Paula Davis ph. 5224341

Federated Farmers

Contact: Brent Hodgkinson
 Ph. 5224381

Golden Bush Garden Club

Meet: 2nd Thursday of month
 Contact: President, Irene Griffith
 0212525098, or Shirley Percy 5224924

Golf

Meet: every Sunday, Ladies 9 hole
 every Tuesday
 Contact: Gary Oldham ph. 0278080578

Historical Society

Contact: Barbara Carleton ph. 5224317

Informer

PO Box 15 Tapawera
 Email tapawerainformergmail.com

Justice of The Peace

Peter Phillips ph. 5224313
 John Ellis ph. 021 522429
 Brent Hodgkinson ph. 5224381
 Francine Currie ph. 5224245
 Susan Fenemor ph. 0275224009 (text
 during school hours)

MENZSHED

Contact: John Wilmshurst ph. 5224616

Neighbourhood Support

Contact: Gavin Scoble
 ph. 5224585 or 027 7576665
 Email gavin@neighbourhoodsupport.nz

Netball

Contact: Susan Fenemor ph.
 0275224009 (text during school hours)

Ramblers

Meet: each month
 Contact: Shirley Percy ph. 5224924

Shedwood Hall bookings

Contact: Tania Higgins ph. 5224587

St Andrews Church Stanley Brook

Services every Sunday. Cup of tea
 afterwards.
 Contact: Lee Winter ph. 5224160

St John Ambulance, Tapawera

St John: ambulance – dial 111,
 Contact: 0800 785 646 ext. 3227

Tapawera Community Centre

Bookings: Carolyn Ellis ph. 027 823
 7247, email tapaweraTDCC@gmail.com

Tapawera Creative Fibre

Meet: every Wednesdays, Memorial
 Hall, Tapawera
 Contact: Dallas Robinson ph. 5224984

Tapawera Jujutsu Club

Contact: Tony Hammersley ph. 5224609

Tapawera Food Bank

Contact: Suzzi Lankshear ph.
 0277491063

Tapawera Music/Country Music Club

Meet: Alternate Sundays, Tapawera
 Hotel 7:30pm
 Contact: Elaine Douglas ph. 5418612

Tapawera Op Shop

Contact: Lisa Carleton ph.0274461017

Tapawera Playcentre

Meet: Mon & Thur, 10am -12:30pm
 Memorial Hall ph. 5224456

Tapawera Rugby Football Club

Bookings: ph. Judy Benjamin 5224445

Tapawera Connect

Contact: Phoebe Quinlivan ph. 021 211
 6730 or 522 4929, email:
tapaweraconnect@gmail.com

Tapawera Sport & Recreation Society

Contact: Judy Benjamin ph. 5224445

Tapawera Volunteer Fire Brigade

Contact: Dean Millar Chief ph.
 0279651399; Ted Oakly Deputy Chief
 ph. 0210704033

Tapawera & Districts Community Church

Service: St. Peter's Tapawera. 2nd &
 4th Sundays at 3pm
 Contact: Church Office 03 541 8883
 Vicar: Rev. Don Moses ph. 541 8883

TAS / Community Library

Mon-Fri 10:30am-1:30pm. Contact:
 Lareen Bonnington ph. 5224149
 Library ph. 5224337/ext. 213

Tapawera & District Community Council

Meetings: 3rd Tuesday of month,
 7:30pm Tapawera Community Centre

TESSI

Contact: Bruce Whyte ph. 5224550

Toy Library

Open Thursday 10:30am-11:30am
 Contact: Jan ph. 5224102

Visual Arts Society Tapawera

Contact: Dallas Robinson ph. 5224984

**What's on
March**

- 6 Tapawera 'Satellite' Meeting on
Future Transport Strategy,
Community Centre, 1-4pm
- 9 Garden Club, Villa Grove
Estate, 117 Wakefield-Kohatu
Highway, 11am
- 9 Our Regenerative Future,
Moutere Hills Community
Centre, 6-8pm
- 12 Sport and Rec Colour Fun
Run / Walk, Tapawera Rugby
Club, 10am
- 14 Tapawera Talking Café, 10-
11:30am
- 20 Articles for Informer close 5pm
- 20 Tapawera Memorial Recreation
Reserve Management
Committee AGM, Memorial
Hall, 7:30pm
- 21 TDCC monthly meeting,
Community Centre, 7pm

**GP & Nurse at
Tapawera Clinic**

(during school term time):

GP clinics – Mondays
9am – 12 midday

Nurse clinic – alternate
Tuesday mornings - phone
541 8911 for dates

* *Do you have an event you
would like listed in What's On?*

* *Or a community group or
organisation you would like
included in the directory?*

If so, please email
tapawerainformergmail.com