

Informer, PO Box 15, Tapawera
email tapawerainformergmail.com



Happy New Year!

We hope this finds you refreshed and ready to get into 2022 after a good summer break!

This year we are very happy to welcome Juliana Griesse to the team. Julianna will be working alongside Phoebe as a Community Coordinator. It is really exciting to have Ju on the team, she brings a lot of experience and passion for community work.

Ju will also be working alongside Erin to coordinate the Youth Programme which is shaping up very nicely so far!

There are a few things to look forward to this year:

January saw us enjoying an Outdoor Movie, Charlie and the Chocolate Factory, run in collaboration with the Tasman District Council. Thanks guys! Loved the classic innovative farming seating solutions!

Coming Up:

Community Planning Meeting: Once we are back in ORANGE

The TDCC and Tapawera Connect have collaborated with Inspiring Communities and the Department of Internal Affairs to host a Community Planning Meeting.

A draft of the Community Vision statement will be open for further input, and groups and individuals can share their community plans for 2022. This will give us opportunities to support each other and collaborate, strengthening our work by combining our efforts, inspiring one another, and working collaboratively towards shared community goals.

We will also be launching the Tapawera Community Website which we would love your input on!

Community Led Development Programme Application

Applications are open once again for this and we would like to know if there is community support for a second go!

Success on this programme would mean lots more support for our community and better access to grants for your community projects.

Let us know what you think!

Text or phone Phoebe on 0212116730, or email tapaweraconnect@gmail.com

Autumn Workshops

This March we will once again run a series of workshops for the Community.

We are looking for facilitators for the following courses:

- Soil Health
- Pallet woodworking project workshop
- Cheesemaking
- Pruning
- Small Engine Maintenance

If you have expertise in any of these areas and would be able to run a 2-3 hour workshop on a Sunday afternoon in March, please get in touch.

Phoebe: 0212116730, or tapaweraconnect@gmail.com

Continuing on in 2022:

Tea and Talk: last Tuesday of each month at the Memorial Hall 10am-12

Cards at the Pub: Every Wednesday, 3-5pm

Mammas Wellbeing Mornings: Every Friday, 10-12 at the Memorial Hall

Youth Group: Every Friday (see poster for further details or contact tapaweraconnect@gmail.com)

LINE DANCING!
7PM TUESDAY

\$10 A CLASS
SHEDWOOD HALL, TAPAWERA
Contact Kirsty.Griffith on 0275679571 for more info.

SUMMIT

Licensed REAA 2008

Tapawera's local real estate professional



"Hume Can Help"

Benjamin Hume
027 741 8809

benjamin.hume@summit.co.nz

RURAL POST, RD 2 Wakefield

Contact Nick & Jackie Costley for all your RD 2 Wakefield postal needs.

Including prepaid envelopes, stamps, courier items and local freight from Wakefield, Dovedale and Tapawera. Prescriptions from Wakefield.

Phone 5418581

Mark & Tania Gill
T/A MTJ Transport
RD2, Nelson
NZ Post Rural Contractors
Servicing
Motupiko-Korere-Kikiwa-Tophouse-St Arnaud-Glenhope

For all your Postage, Milk & Courier Freight
Operating 3 Days Weekly
(Monday-Wednesday-Friday)
Departing Nelson 8.00am
Phone 546 6295

TAPAWERA ELECTRICAL

Tony Stephens

Registered Electrician

Ph/fax 5224257
0276249489

All electrical needs
Domestic & Rural

Wiring, faults, some home appliance repairs
New heat pump installations



Free Quotes
Competitively priced

Material & adverts for Informer

All material is to be sent to either:

Informer, PO Box 15, Tapawera, 7055
or email- tapawerainformergmail.com

To be received by 5pm
20th of the Month

If emailing a word document please send in Word as an attachment using Font Aerial Narrow size 11
If sending an advert please save as a jpeg before sending.

Please check your emails to see your article/advert has been received as sometimes there needs to be alterations.

Advertising rates for Informer

Standard advertisement	
1/4 page advert	\$25
1/2 page advert	\$35
Full page advert	\$50

Adverts that require editing may cost extra

The Informer is produced and published by the Tapawera and Districts Community Council, PO Box 15, Tapawera, 7055;
email: tapawerainformergmail.com
Circulation 635
Editor: Gill Hammersley
The Editor and Publisher try to ensure information published is truthful

and accurate, but do not accept any responsibility for errors or omissions, or for any consequences of readers' relying on the information published. Opinions expressed by contributors may or may not be endorsed by the Editor or Publisher.
All material submitted, whether editorial or advertising, is accepted at the discretion of the Editor and the Publisher.

Senior Snippets

By Karen Carleton - Seniors Wellbeing Coordinator
Tapawera Connect

Welcome back everyone and a Happy New Year! This year I'd like to try something a little different and each month introduce an important Senior Member of our community, the questions asked of that person are aimed to be fairly neutral, not personal and non-political. My aim is to get to know a valued member of our community a little better. This month's Senior member is Susan Creedy.

Tea and Talk will resume on the last Tuesday of each month between 10 - 11.30. This is a NO COST opportunity for Seniors to meet at the Memorial Hall for a cup of tea, chat and some home baking. Hopefully during the year we will have the odd Guest speaker able to come along as well, for some information sharing.

On MARCH 29th which is a Tea and Talk day Mary Hardcastle from Nelson Bays Primary Health will be coming to speak for around 15 minutes on "Advanced Care Planning" This is an opportunity to perhaps better understand what it means to have an Advanced Care plan, to share personal values, life goals, and preferences regarding medical care. It's a gift you can give your loved ones who might otherwise struggle during a medical emergency to make choices about your care.

Finally I am happy to share a request from Susan Creedy regarding interest in forming a regular walking/strolling group. Information on that follows.

Take Care Kindest Regards Karen Carleton

Introducing our Senior Profile for February: Susan Creedy



How did you come to be living in the Tapawera community?

David and I grew up in the country. After very busy lives in more populated areas where our markets were, it became very attractive to return to country living and Tapawera is perfect for a retired life. It is small with services and a grocery store within walking distance (so that we don't die of starvation if we can no longer drive.) We chose Tapawera for all the things we value, particularly the beauty of the countryside and growing capacity of the soil here. David is a plantsman with a lifetime of experience in landscape development and local body parks and reserves. He has also been a hunter and trumper. We already knew some lovely folk here due to my teaching art at night classes some years ago.

Before you came to Tapawera what did your life look like?

Busy, noisy, interesting, productive, creative, busy, noisy, demanding.

I attended Wellington Polytechnic School of Design and gained employment with the Government in National Publicity Studios and the NZ Railways advertising department. Marriage and two children took up a few years and I supplemented the family income by teaching drawing and painting at community classes. I exhibited paintings in Wellington and belonged to the Wellington Watercolour Society. I became involved with designing and producing sandblasted architectural glass and developed a business in 1985 supplying Wellington with commercial and domestic installations.

After a marriage split I sold the business and began again in Nelson in 1992. As the Nelson market place was much smaller I had to back up my ability to pay the bills by picking and grading apples for a season and teaching community classes as I had done in Upper Hutt since 1976. I, with a business partner who did picture framing, built and ran an art gallery in Richmond sourcing works nationally. Works mainly included hand blown glass, some pottery, printmakers' editions and original paintings. A smaller market place for sandblasted glass gave me the opportunity to create more original, personalised pieces so was far more interesting and much more fun.

Throughout my life I have painted and drawn but witnessed the great retreat of purchasers of original works to the throwaway, cheap decorator pieces of today. Folk are more likely to spend income on outdoor activities. Good on them but cultural interests define us as well.

When I started work I joined a tramping club and had many years exploring the Tararuas, Kawekas, Nelson Lakes and the Southern Alps along with ski and mountaineering trips to Ruapehu. Our love for the mountains is reflected in the choice of our view of Mount Arthur and proximity to Shedwood Reserve.

Real Estate is our business

SUDOKU

8	7			9			5
9		4		3		6	7
3				8		1	2
1		9	5				
	6		8			7	5
	4					2	
		8		3			
				2			
7							3

LEVEL: Hard H I I



CALL US TODAY

to discuss how we can achieve great results for you.

 ALTOGETHER BETTER <small>VINING REALTY GROUP LTD, BAYLEYS LICENSED UNDER THE REA ACT 2008</small>	<p>Jilly Perry 022 193 9441 jilly.perry@bayleys.co.nz</p>	<p>Lydia Heyward 027 432 8532 lydia.heyward@bayleys.co.nz</p>
---	---	---

Tapawera Kindergarten

We are a recently established kindergarten located on Tapawera Area School grounds offering:

- ◆ A curriculum catering to individual child's needs that is community focused, respectful and inclusive
- ◆ 100% qualified and registered teachers
- ◆ Open all year round
- ◆ A smooth transition to school
- ◆ Flexible hours
- ◆ Up to 30 hours of free early childhood education for 2-5 year olds

Tapawera Kindergarten is welcoming new enrolments now.

Stop by and have a chat with our teachers between 9:30am and 2:30pm or call/email for more information.

Open 8.45am—3pm, Monday—Friday
 021 0878 8070
tapawerakindergarten@ntk.org.nz

We are located at the end of the Primary block, near the back field.

Up to 30 hours
free

What do you enjoy most about Tapawera?

The beauty. Peace. Lovely friendships. The weather. Mornings. Evenings. Walks. The river. The mountains. Countryside. Clear air. The colours of the seasons. Time to just be. A feeling of a continuity of life naturally evolving.

What challenges have you found being in Tapawera?

We have never before lived in a community where we have had to install a security camera. The challenge is sad and unnecessary as we possess a humanitarian view of society and enjoy sharing and caring. There are many who don't understand their responsibilities to their fellow "travellers". We owe each other a duty of care where kindness and understanding bind us in a genuine definition of community and regulations are in place to help retain those standards. Too many folk here do not understand that and ignore them selfishly to the detriment of the rest of us.

What would you like to do or achieve with the rest of your life?

To be fitter and be able to walk the Heaphy Track before too long (mind and body willing) However, the limitations of the ageing process require provisions for Seniors and the less physically able. A small community must address this in a more personal and involved way as our own efforts depend very much on that. Developments for Shedwood Reserve would enhance the Tapawera Community and there is hope that options will open up for proposals. I would like to help that type of development. I can only deal with now as the rest of my life is decided by factors out of my control. One's own community is where life is lived and the better the community the better for all.

If there was one small piece of advice you would give to your younger self what would it be?

Not everyone will understand you, nor you them, but there are always processes to resolve differences. Try to find the process.

Do you have any favourite recipe, quote or person you admire you could share with us?

"The value of a future order will be exactly as great as the sacrifices we make today." Quote from Herman Hesse "Reflections"

On a personal level it is always best to be fair and as open minded as possible. Listen to others. Listen to common sense. Be kind, generous and retain a sense of humour as well as looking after yourself so that you are able to do those things. It may not be easy but working hard does pay off. A good life requires determination, appreciation, relationships and wonder. One life, one planet. How we care for them is crucial to everything else.

Seeking Interest In Forming A Regular Local Walking/Strolling Group

For most of us exercise is something that brings physical and mental benefits to our lives. I am interested in meeting folk who want to walk no matter what their fitness level or physical capacity is. I am aware that many older folk will welcome some regular exercise with enjoyable company to share it with. Some may want to exercise daily, weekly, or intermittently. Some may have physical impairment such as a recent joint replacement and would like someone to stroll with them while they gain more strength.

The intention is that local walks be explored and enjoyed at any level of fitness, on a regular daily, weekly or flexible basis. Meeting together to share ideas will give motivation to many and health to all who participate.

I would like to hear from anyone interested in forming up a local walking/strolling group in our local area. The existing Ramblers group offer good walks at all levels of fitness on the 1st Monday of every month and often travel out of the district to walks elsewhere. It includes folk from Wakefield, St Arnaud etc. The formation of another local group would be complementary to that programme and offers a different involvement with a more regular, local theme. It would be lovely to provide more outdoor exercise for all who are interested.

My phone number is 522 4969. Please call me if you want to take part or enquire. I am planning a meeting at my home on Tuesday, 8th February at 3pm. All welcome but let me know if you are attending.

I look forward to your response. Susan Creedy.

Farm Clearing Sale

56 Upper Stanley Brook Rd

When: 18th Feb, 11am

- 2 tractors, 3 bulldozers, 1 digger
- All farm machinery and other farm equipment
- Gardening goodies and surplus household furniture.
- Sundry items.

Outside entries welcome.

John and Geraldine Carleton, 522 4234

TAPAWERA SHEARS 2022 **Held at Tapawera, 22nd January**

The Tapawera Shearing Committee gratefully acknowledge and appreciate the support of the following sponsors in our recent shearing competitions:

Sollys Freight
Segard Mesural
aerowork
Lake Station Herefords
Barker Contracting Ltd
D & T Newport, Dewes Dorset Down Stud
Hogarth Spreading
A C Palmer & Sons
Island Valley Farm
Fry Contracting
Ken Thomas, Ewe Scanning
Hayden Morgan Electrical
N E Parkes & Son
A & D Win
K & P Irvine
W & L Anglesey
Fence It Nelson
CRT Farmlands,
Fertilizer NZ, PGG Wrightson

Special thanks to the wool handlers, Kerry on the mic', all the judges, and especially Kerry and Pam Irvine for the use of their sheep

OUR SPONSORS SUPPORT US, PLEASE SUPPORT THEM!!

WADSWORTH MOTORS LTD

**Over 90
Years of
Service**

- Fuel 24 Hour Card Access.
- W.O.F Testing.
- Automotive Services and Repairs.
- Enzed Hydraulic Hose + Fittings.
- Batteries, Tyres, Oils, Parts & Accessories.
- MTA Assured.
- Coach Charters & Mini Bus Hire.

E. wadsworthmotors@xtra.co.nz
100 Main Rd, Tapawera



P. 03 522 4248
www.wadsworthmotors.co.nz



Golden Bush Garden Club

The 9th December 2021 saw us meeting at the well-established, welcoming home and garden of the lovely Pam Ladley in 88 Valley Road, Wakefield. What a time of friendship, treats and surprises was enjoyed by all, once the necessary COVID protocols were dealt with (under the new Amber Traffic Light System).

This was the first time in a while that we met under slightly threatening skies, but that didn't dampen the enthusiasm for the day. There was plenty of room for us to spread out and relax in our garden chairs for the meeting and to have our lunch; after which we could wander around the spacious gardens or enjoy Pam's amazing Christmas home decorating, which was like visiting Santa's Grotto! Most of us were in awe of the huge display throughout her home, with not one but three large, decorated Christmas trees! (I'm glad I'm not on 'pack-up' patrol and trying to store it all again for next year! I always miss packing something away and it hangs around sad & lonely until it is rejoined with its mates come a few days before Christmas next year.... Last year was hubby's Christmas stocking that reminded him all year of how Santa missed filling it as he passed by – that's what you get for being naughty I guess).

We were treated to beautiful fresh strawberries, meringues and cream, fruit cake and fruit mince pies as our Christmas break-up surprise, topped off with a visit from Santa Bob, who hand delivered specially wrapped gifts for each of us. There were four raffle prizes donated and gratefully received by the recipients (sorry I missed writing these names down) and the vintage quilt that had been raffled off over two months was won by (the absent) Linda Milsom. Linda tells me it's the first time she's won anything, so congratulations! We felt thoroughly spoilt by the end of the day when we farewelled each other until our February meeting.

On Thursday, 10th February, 2022 we will be meeting at the home of Bob and Linda O'Leary, 4960 Motueka Valley Highway at the usual time of 11.30am. Please bring your COVID Passport, mask and the usual chair, cup, lunch, auction items and cash for purchases. Bear in mind it is usually a bit on the hot side of things this month so slip, slop, slap and keep your cool. I look forward to catching up with everyone again.

Janine Leeden
Secretary



Library News

Here we are in a new year of school and no matter what Covid brings, we'll try to make the library a good place to be.

We've had a quiet holiday break and not many people have taken advantage of the library opening for two hours most weeks, I guess the hot weather is to blame for that though the library did stay amazingly cool. Our chess club was also operating during these open hours.

Our new year brings a new book budget with it so if there are books you'd like to see in the library for the students or in non-fiction then just call in and have a chat with us.

We will be doing an exchange with our Richmond collection at some stage as soon as it can be arranged. For those who don't know, this is a long loan we do with Richmond Library taking about two hundred books at a time for about 6 months, this brings some freshness to our normal collection.

If you are new to the community, do come in and have a browse, you will be pleasantly surprised to see what a great library we have. Not everyone realises it is a community library as well as a school library. You can view our catalogue from home on our website nz.accessit.online/TPW00 (last two digits are zeros).

We are open during school hours but if you can only come outside of these hours just call Laree on 0272625289 and we can arrange a time to open.

You will find us behind the tennis courts at the school. Our hours are Monday Wednesday and Thursday 9.30-3.15, Tuesday and Friday 10-2.30. Email library@tapawera.school.nz, phone 5224337ex213.

Hoping to see you in here.

Laree for the library team.



Come check out our great range of good quality toys for hire.

Open on Thursdays 10.30am – 11.30am

Main Road, Tapawera

Please contact Michelle on 0276310145 for details.

Providing gentle guidance when you need it most.



**Simplicity
Funerals**

Simply respectful. Simply affordable.



Anna Loach
Manager / Funeral Director
Dip FD Reg. FDANZ

**NELSON & TASMAN WIDE,
WE'RE PART OF YOUR COMMUNITY**

Phone 03 929 5145 | 276b Queen Street, Richmond
nelson.simplicity.co.nz



Not Jonathan Livingstone Seagull

Towards the end of August last year, we were privileged to observe a colony of breeding gulls settling on an island in the river below our

house. It transpired that they were Black Billed Gulls, the most endangered gull in the world (not to be confused with their scavenging seashore relatives, the Black Backed gull or the Red Billed Gull); these birds' natural habitat is braided rivers on the East Coast of the South Island.

We were entranced as day after day both parents took turns to sit on the nest while the other parent went off and fed. In the evening they would all congregate back on the riverbed for the night. This went on for weeks which turned into months as the newly hatched youngsters required constant feeding. We were impressed by the dedication and endurance of the day after day flying, feeding and caring required for these animals to raise their young successfully.

Along with this hard work; twice the river rose around the island and washed away a significant number of the nests with the parents sitting valiantly on as the water slowly rose around them and drowned their precious eggs.



The weeks before Christmas saw the young birds growing stronger and spending increasing amounts of time in the air. At dusk they would play at flying together in a similar manner to the way that lambs and calves frolic in the spring. As we departed for a week away, we expected there to be no birds left when we arrived home, but the Motueka River is a good home for Black Billed Gulls and they continued to base themselves around the island.

Unfortunately, with the heat of summer and the holiday season many people quite naturally gravitate to the cool of the river. The birds often return home to rest in the heat of the midday and as people arrived with their dogs to cool off, it seemed that part of the entertainment was chasing the birds. Others didn't chase the birds, but stood or drove through the middle of the nesting site and became irritated when the birds harassed them. For many of these birds this small section of the river was the only home they had

ever known and all they were doing was trying to defend themselves. They went nowhere near other river users.

Regulars to the river during this time will recall being approached by a crazy bird lady who felt it important to explain the birds' behaviour and everyone I spoke to was very generous and offered to shift a little further up or down the river.

Unfortunately the day arrived when an apparently determined couple and their eight hunting dogs decided that chasing the birds until they fell out of the sky with exhaustion and drifted helplessly in rafts down the river would be their afternoon's entertainment.

Why?

The Black Billed Gulls are a beautiful pristine white bird doing no harm but just trying to survive and raise their families along the river. We need to give our wildlife room.



Adrienne Baigent

Welcome!

Welcome to Tui

A belated welcome to Tui to Lorenz and Kim Kahl who have moved into the area from Richmond. They are enjoying living in the country and are looking forward to exploring the Tui area on their e-bikes.



Tapawera Netball Club AGM

Tuesday 15 February 2022

7.30pm

Tapawera Rugby Clubrooms



FRIDGES • FREEZERS • WASHERS • DRYERS
 DISHWASHERS • OVENS • RANGEHOODS
 SPARE PARTS • SECOND HAND SALES

WHITEWARE SOLUTIONS LTD

Repairing whiteware
 from Richmond to
 Wakefield, Tapawera
 and surrounding areas.

TIM LLOYD
 79 TREETON PLACE
 WAKEFIELD

For service call:

027 685 5777 or **541 8877**

Tasman Bay Chiropractic
 64 Oxford Street Richmond



Keeping you in the game since 2002

Referrals, families and new clients
 welcome.

Visit our website or call for more
 information

tasmanbaychiropractic.co.nz

03 544 4554

Monday-Saturday

Find us on 



HANDYMAN

- * General property maintenance
- * Clean out/tidy up
- * Water blasting
- * Gardening
- * Chain sawing
- * Repairs
- * Demolition
- * Any farm work

Fair hourly rate. Honest and hard working.

Local references available.

Please enquire to Jeremy Ellis (03) 522 4460

voltz

ELECTRICAL LTD

Julian McGaveston
Registered Electrician

For all your domestic, commercial
 and rural electrical needs.

T: (03) 522 4488

M: 021 566 645

F: (03) 522 4698

E: voltzelectrical@silkweb.net.nz

2227 Wakefield Kohatu Hwy. RD2. Wakefield 7096

Hello Tapawera Community,

My name is Juliana Griesse and I am here to introduce myself to you as I started to work with Phoebe Quinlivan, sharing the coordination of Tapawera Connect. I think and hope we are going to meet soon!

I was trained as a vet in Brazil and did research with wildlife and ecology for a while. I have a lot of good memories. I worked for 15 years supporting the local community. I was enthusiastic about bringing children and youth together to have contact with nature and working with the local government to care for nature. I also worked with youth and families at risk. My work involved listening to the community and working together to support young people to find health, happiness and develop the capacity to work. I also participated and coordinated projects that worked with landowners, helping them to adjust their practices to new environmental laws, and forestry companies to create more dialogue between them and the community. I learned a lot in those years. I believe that collaboration between the people in a community can create a better place to live.

I came to New Zealand in 2016. I met my partner that time. After coming and going from Brazil a couple of times, in February 2020 I came to get married and I have been here since then. As I settle here and let go of Brazil, I am discovering more and more the beauty of this country and its people. A new beginning for me and I have a lot to learn.

I feel humbled to have a fresh arrival in New Zealand and I know there is a lot to familiarize with in terms of supporting a rural community like Tapawera. I am excited to contribute in my role working at Tapawera Connect and I trust I can bring something special for the community.



Come along to Tapawera's monthly get together for people 65+

Tea and Talk

last Tuesday of every month

10 am – 11:30 am
MEMORIAL HALL

For more info contact Karen on 5224492

Mamma's Wellbeing Mornings

WEEKLY GET TOGETHERS FOR MUM'S AND THEIR LITTLE ONES

CONNECT UNITE AND SHARE THE JOURNEY

FOR MORE DETAILS CONTACT PHOEBE 021 211 6730 OR EMAIL TAPAWERACONNECT@GMAIL.COM

CARDS AND GAMES AT THE PUB

WEDNESDAYS 3-5 PM

FOR MORE INFO CONTACT ANNIE 021 550 220



All Accounts Matter LTD

For all your accounting and tax needs!

If you are looking for a new Accountant, now is the perfect time! I would love to find out about your business and have a no obligation chat about how I can help you. So don't wait, call me now!

Sonia Emerson Chartered Accountant

GST | Tax Returns | Payroll | Bookkeeping | Cashflow Forecasting
Management Reporting | Rental Statements | Farm Accounts



ACCOUNTING SOFTWARE

myob

2020/2021
Certified
Consultant



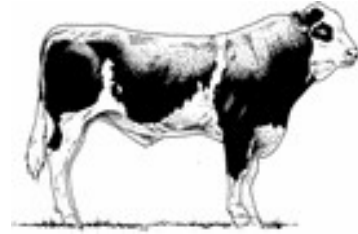
M: 021 221 1009 | P: 03 541 9005 | sonia@allaccounts.co.nz
367 Wakefield-Kohatu Highway, RD1, Wakefield 7095

www.allaccounts.co.nz

Gillespie—1

MAF approved

Home kill butchery



03 547 7746

Butcher / journeyman

Specializing in quality small goods

Factory: 111 Bolt Rd, Nelson

The Lady Tradie

Has your husband got a round 

Spring has sprung

and the grass has riz !

Do you wonder where a handyman is ?

Can't get one ?

Then call " Jen the Lady Tradie "

for all your outside spring clean-up jobs

* Gutters full of leaves;

* Lawns that are starting to bolt;

* Waterblasting those slippery paths

and all that spring growth that just might get away on you.

* Local Person * Referees Available *

Consideration & discount shown towards Senior Citizens

FREE QUOTES

Contact Jennifer

Phone or text: 027 544 2663

After hours/leave a message: 03 522 4453

Email enquiries to: jentheladytradie@gmail.com



TOWN & COUNTRY

VET

"...for all creatures great & small..."

**Regular Tapawera visits
discounted mileage
T&Cs apply**

Ph 544 1200

info@tcvet.co.nz * www.tcvet.co.nz

**25 Edward Street, Wakefield
35 McGlashen Avenue, Richmond**



24 hour emergency vet

TAPAWERA CONNECT

YOUTH GROUP TERM 1



- WEEK 1** ProKarts in Nelson
- WEEK 2** River Trip & Picnic
- WEEK 3** Mini Golf in Richmond
- WEEK 4** DIY Ice Cream Sundaes
- WEEK 5** Archery in St. Arnaud
- WEEK 6** Whenua iti outdoor challenges
- WEEK 7** Jeopardy Quiz Night with prizes
- WEEK 8** Movie Theatre
- WEEK 9** Target shooting
- WEEK 10** Car workshop Wadsworth Motors
- WEEK 11** Easter Egg Hunt

Admission is \$5 each towards the cost of activities, food and transport. You need parental permission to participate.

TAPAWERA & DISTRICTS
T D C C
COMMUNITY COUNCIL



presents

Tapawera

& SURROUNDING VALLEYS

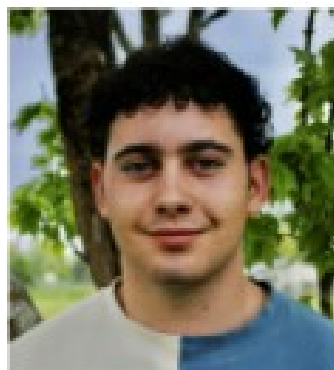
Community Planning Meeting

Date TBC

Purpose:

Knowing and building on our strengths
Sharing our ideas and aspirations for the
coming year and understanding how it all
weaves together to build a caring and resilient
community.

Tapawera Area School
M W Cain Award for Academic Excellence
DUX Year 13



Tomas Girodo

Major Awards for 2021

Academic Excellence in Yr 12 Overview Holdings Ltd
 Academic Excellence in Yr 11 Overview Holdings Ltd
 Best All-Round Student in Yr 13 The Anglesey Family Cup
 Best All-Round Student in Yr 12 The Booth Cup
 Best All-Round Student in Yr 11 The Mead Award
 Best All-Round Student in Yr 9-10 The Natasha Warnes Memorial Trophy
 Best All-Round Student in Yr 7-8 The IG and LM Anderson Family Trophy
 Best Effort in Yr 9-10 The Hinetai Hops Trophy
 The Most Improved Reader in Years 5 and 6 The Currie Cup
 The Most Improved Reader in Years 3 and 4 The Hillerby Family Cup
 The Most Improved Reader in Years 1 and 2 The Ellis Family Cup
 Achievement in English John Bird Memorial Award
 Achievement in Physical Science and Technology Year 13 Network Tasman
 Achievement in Physical Science and Technology Year 12 Network Tasman
 Achievement in Physical Science and Technology Year 11 Network Tasman
 Achievement in Science Year 11 McKee Award
 Achievement in Visual Arts Year 13 McKee Award
 Achievement in Visual Arts Year 12 McKee Award
 Achievement in Visual Arts Year 11 McKee Award
 Award for Creativity in Visual Arts the Tapawera Artists' Award
 Award for Exemplary Support of Others in the School Community.
 The Lyn Anderson Memorial Cup
 Award for Senior Citizenship, The Round Table Citizenship Cup
 Award for Junior Citizenship, The Staff Citizenship Cup
 Contribution to Music Paula Griffith Memorial Cup
 Contribution to Music Donnithome Family Trophy
 Environmental Awareness the Harry Hancock Award
 NMIT Scholarship
 The Prime Minister's Vocational Excellence Award
 Nelson Soroptimist Education Trust
 Overall Best Year 0-6 PB4L
 Overall Best Year 7-8 PB4L
 Overall Best Year 9-14 PB4L

Lacey Burnett
 Rosa Cameron
 Tomas Girodo
 Angus Phyn
 Rosa Cameron
 James Snackers/Sarah Jones
 Emma Wallace
 James Snackers/Cheyenne Phyn
 Isabella Newcombe
 Harry Butcher
 Aurora Waby
 Grace Mylton
 Tomas Girodo
 Angus Phyn
 Rosa Cameron
 Rosa Cameron
 Janette Chetham, Tomas Girodo
 Lacey Burnett
 Rosa Cameron
 Sophia Newcombe

Krystal Hickey
 Tomas Girodo
 Emma Wallace
 Krystal Hickey
 Bronco Kennett-MacDonald
 Tamali Bright
 Lacey Burnett
 Angus Phyn
 Krystal Hickey
 Alyse Clarke/Leroy Wills
 Emma Wallace
 Tadmor



Tapawera Area School Prizegiving 2021

Subject Awards

Adult

Amanda Beer: Outstanding Achievement: L2 Visual Art
Photography
Hamish Macbeth: Effort: SPEC

Year 14

Matthew Koerve: Effort: SPEC, Pro Mat, Op Shop, Quinney's
Bush
Francois Lang: Effort: ORS Fitness

Year 13

Janette Chetham: First: Visual Art Painting, Effort: English,
PE
Olive Ellis-Oldham: First: DAP, Literacy, Effort: Financial
Capabilities, Visual Art Painting
Kaya Hura: Effort: Outdoor Education
Tomas Girodo: First: Maths, PE, Visual Art Painting, Effort:
English, Spanish L2
Timo Hicks: Effort: Outdoor Education
Grace Mytton: First: English

Year 12

Lacey Burnett: First: Rural Studies, Visual Art Painting
Matua Carleton-Heta: Effort: Visual Art Painting
Amy Cumming-Holden: First: English, Effort: Biology, Tourism
Levi Davies: First: Visual Art Photography, Effort: Outdoor
Education, SPEC
Krystal Hickey: First: Financial Capabilities, Effort: English
Ryan Jones: First: Outdoor Education
Angus Phyn: First: Maths, DAP, Effort: Materials Technology
Cain Walker: Effort English

Year 11

Bayley Bint: Effort: Science
Rosa Cameron: First: English, Maths, Science, PE, Visual
Art, Effort: Te Reo
Sam Hatton: First: Hospitality, Effort: Science, Health
Education
Amelia Hook: Effort: Outdoor Education
Luke Mytton: Effort: English, Maths, PE, Hospitality, Visual
Art
Tanika Oakly: Effort: Materials Technology, Hospitality
Caitlin Newport: Effort: PE, Geography
Kara Page: First: Outdoor Education, Materials Technology,
Effort: English, Maths, Science, Hospitality
Kaleb Webb: Effort: Materials Technology

Year 10

Mitchell Bean: Effort: SPEC
Levi Bint: First: DAP, Effort: Maths, Social Science, Textiles,
Science
Tylar Christiansen: Effort: Pro Mat
Rose de Baugh: Effort: Material Technology
Katey Gillespie: Effort: Visual Art
Shanina Guyton: First: Social Science, Effort: PE, Health,
Music, DAP

Sarah Jones: First: PE, Effort: Materials Technology, Food &
Nutrition

Jamie McNab: First: Science, Effort: English, Maths, Food &
Nutrition

Cheyenne Phyn: First: Health, Materials Technology, Visual
Art, DVC, Textiles, Effort: English, Science, PE, DAP, Music

Levi Sosich: First: Maths

Emily Walker: First: English, Food & Nutrition, Effort: Social
Science

Emma Ward-Clements: Effort: DVC

Year 9

Taine Collins: Effort: DAP, Music

Meleek Fletcher: Effort: Maths, Social Science, Food &
Nutrition, DAP

Abi Hatton: First: Textiles, Effort: English, Science, Social
Science, Materials Technology

Lukas McKenzie: First: DAP

Kobi Mitchell: Effort: Science

Sophia Newcombe: First: Visual Art

Hayden Owen-Wright: First: Science, Social Science, Health,
Food & Nutrition, Effort: Maths, PE

Kate Mytton: First: English

Kumo Palmer: Effort: Visual Art, DVC, Food & Nutrition,
Textiles

James Snackers: First: Maths, PE, Effort: Science, Materials
Technology, DVC

Madison Wagner: Effort: English, Maths, Textiles

Year 8

Tamati Bright: Effort: Textiles

Nikau Cameron: Effort: English, Maths, Business Studies

Tylar Davey: First: Materials Technology, MAX, Effort: PE &
Health

Kayen Dyer: Effort: Textiles

Fergus Ellis: First: Food & Nutrition, Effort: Business Studies

Jada Jelinek: First: DAP, Business Studies Textiles, Effort:
PE & Health, Music, Materials Technology

Shakaia Kennett-MacDonald: First: DAP, Business Studies,
Effort: Topic, PE & Health, Materials Technology

Tasha Owen-Wright: Effort: Topic, MAX

Maddy Pronk: Effort: Visual Art, MAX, Textiles

Emma Wallace: First: English, Maths, Topic, PE & Health,
Visual Art, Effort: Food & Nutrition

Year 7

Charlotte Ashton: Effort: English, Maths, PE & Health,
Materials Technology, MAX, Textiles

Joseph Butcher: First: Visual Art, MAX, Effort: Maths, PE &
Health, Music, Food & Nutrition

Chanel McGaveston: First: English, DAP, PE & Health, MAX,
Food & Nutrition, Effort: Visual Art, Music, Materials
Technology

Hannah Newport: First: Textiles, Effort: Topic

Hunter Page: First Maths, Topic, DAP, Materials Technology,
Effort: English, Textiles

Lane Upson: First: Business Studies, Effort: Visual Art

Charlie Wills: Effort: Business Studies

Tristan Win: Effort: Food & Nutrition

Year 6

Alyse Clarke: Effort: Reading
 Kiana Collins: Effort: Maths, Topic, PE
 Mela Jelinek: First: Writing, Effort: The Arts
 Tyler Hook: First: The Arts
 Bronco Kennett-MacDonald: First: PE, Effort: Writing
 Kasey Mitchell: First: The Arts
 Ella Stewart: First: PE, Effort: Maths, The Arts
 Jaidyn Webb: Effort: Reading
 Lydia Wedderburn: Effort: The Arts
 Lachlan Wills: First: Reading, Maths, Topic, Effort: PE
 Leroy Wills: Effort: Writing, Topic

Year 5

Lachie Barker: Effort: The Arts
 Alexander Barlow: Effort: Reading, Topic
 Levi Bennett: First: PE, Languages
 Holly Bright: Effort: Topic
 Levi Davis: First: Reading
 Atlanta Linstead: Effort: Maths
 Grace McGaveston: First: The Arts, Effort: Writing, PE, Maths
 Isabella Newcombe: Effort: Writing, The Arts
 Ella Walker: Effort: Maths
 Logan Walsh: First: Writing, Maths, Topic, Effort: PE

Year 4

Lily Ashton: First: Reading, Writing
 Dusty Andrews: Effort: The Arts, Maths
 Harry Butcher: First: Topic, The Arts
 Jessica Cummings: Effort: PE, The Arts
 Courtney Funnell: Effort: Writing
 Leo Herbert: Effort: Topic
 Bayley Hook: Effort: Maths
 Keetah Jones: Effort: Reading, Writing
 Cyprus Leabourn-Matthews: First: Maths
 Haylen Leabourn-Matthews: Effort: The Arts
 Ollie McGaveston: First: PE, Effort: Writing
 Rose McNab: Effort: Writing
 Ella Moore: Effort: Maths
 Oliver Snackers: Effort: PE
 Leah Walker: Effort: Reading

Year 3

Bo-Lili Andrews: First: Visual Art
 Jesse Barlow: First: Maths, PE
 Nadia Barrett-Thomas: Effort: Writing
 Ollie Bennett: First: PE, Effort: Maths
 Ben Dixon: First: Reading, Effort: Maths
 Jordan Hook: Effort: Topic, PE, Visual Art
 Awa Power: First: Writing, Effort: Reading
 Eden Shand: Effort: Reading, Visual Art
 Psyan Shergold: First: Topic, Effort: Writing
 Jimmy Shaw: Effort: Topic

Year 2

Jackson Irvine: First: PE, Effort: Writing, Maths
 Ayva Makiri-Angus: Effort: Visual Art
 Harper McGaveston: First: Writing, Topic, Effort: Reading

Maisey McGaveston: First: Reading, Maths
 Charleigh Meade: Effort: Maths, Topic
 Wednesday Moran: Effort: PE, Visual Art
 Jaxson Searles: Effort: Reading, PE
 Aaliyah Shand: Effort: Topic
 Aurora Waby: First: Visual Art

Year 1

William Ashton: First: Writing
 Jonah Davies: First: Reading, Effort: PE, Maths
 Blake Clarke: First: Maths
 Alex Leeves: First: Visual Art, Effort: Reading
 Castiel McArley: Effort: Reading
 Marlee Omlo: Effort: Visual Art
 Charlotte Shaw: Effort: Writing
 Kaiden Walker: First: PE
 William Webb: Effort: Writing, Maths
 Aaliyah Winwood: Effort: Visual Art

Year 0

Mia Barker: First: Reading, Visual Art, Effort: Writing, Maths
 Ayarna Linstead: First: Writing, Effort: Reading, Visual Art
 Hunter Reilly-Clements: First: Maths, Effort: Reading, PE
 Annabella Page: Effort: Visual Art
 Ocean Power: First: PE

Academic Badges for NCEA 2020

(Gaining of a Merit or Excellence Certificate Endorsement)

Skyann Martin	Year 13	Level 2	Merit
Tom Haunch	Year 12	Level 1	Excellence
Grace Mytton	Year 12	Level 1	Excellence
Olive Ellis-Oldham	Year 12	Level 1	Merit
Amy Cumming-Holden	Year 11	Level 1	Merit
Angus Phyn	Year 11	Level 1	Merit

Progressive Achievement Tests (PAT's) 2021

(Average 8 or Above out of 9 in 4 PAT Tests)

Tamiti Bright	Year 8
Nikau Cameron	Year 8
Hunter Page	Year 7
Logan Walsh	Year 5
Lily Ashton	Year 4

Sporting Badges for 2021

Winning or Gaining Places in Regional Tasman Secondary School (TSS) Events

Janette Chetham	Year 13	Badminton, Volleyball 2019
Tomas Girodo	Year 13	Volleyball
Lacey Burnett	Year 12	Badminton
Flynn Morgan	Year 12	Rugby
Rosa Cameron	Year 11	Badminton, Volleyball
Caitlin Newport	Year 11	Athletics
Sarah Jones	Year 10	Athletics, Football, Badminton

TAS Badges for Service to Others 2021

Matt Koerve, Year 14 Francois Lang, Year 14
Janette Chetham, Year 13 Tomas Girodo, Year 13
Grace Mytton, Year 13 Angus Phyn, Year 12
Rosa Cameron, Year 11

Awards for Service to Others

Year 14

Francois Lang: Rubbish Collecting, Kai with Love
Matt Koerve: Lost Property, Volunteering: Kai with Love, Op Shop

Year 13

Janette Chetham: Senior Baton House Leader, Dovedale Bus Monitor, 'The Rivers' Magazine Student Editor, SVA Top Student
Teana Coleman: 'The Rivers' Magazine
Olive Ellis-Oldham: Senior Motupiko House Leader
Jamie Hatton: Big Brothers Big Sisters
Kaya Hura: Kohatu/Korere Bus Monitor, Senior Motupiko House Leader
Tomas Girodo: 'The Rivers' Magazine, Senior Tadmor House Leader, Volleyball Coaching Year 7-8
Grace Mytton: BOT Representative, Big Brother Big Sister

Year 12

Lacey Burnett: 'The Rivers' Magazine, Big Brothers Big Sisters, Senior Baton House Leader
Amy Cumming-Holden: 'The Rivers' Magazine, Big Brothers Big Sisters, Dovedale Bus Monitor
Levi Davies: Kai with Love
Krystal Hickey: 'The Rivers' Magazine, Big Brothers Big Sisters, Kai with Love
Ryan Jones: Tui/Matariki Bus Monitor
Angus Phyn: Caretaker Assistant, Grass Kart Assistant
Cain Walker: Glenrae Bus Monitor

Year 11

Rosa Cameron: Kohatu/Korere Bus Monitor, Senior Motupiko House Leader, BOT Representative, Big Brother, Big Sisters
Gypsy Gallot: Kohatu/Korere Bus Monitor
Samantha Hatton: 'The Rivers' Magazine, Big Brother, Big Sisters
Amelia Hook: Tui/Matariki Bus Monitor, Big Brother, Big Sisters, Senior Tadmor House Leader
Nivan Jelinek: Big Brother, Big Sisters
Luke Mytton: Big Brother, Big Sisters
Caitlin Newport: Kohatu/Korere Bus Monitor

Year 10

Levi Bint: Dovedale Bus Monitor
Tylar Christiansen: Kai with Love
Cody Coleman: Kai with Love
Dylan Eyles: Tui/Matariki Bus Monitor
Shanina Guyton: Dovedale Bus Monitor
Sarah Jones: Tui/Matariki Bus Monitor
Cheyenne Phyn: 'The Rivers' Magazine, Deputy Tadmor House Leader
Emily Walker: Glenrae Bus Monitor

Year 9

Kobi Mitchell: Deputy Baton House Leader
James Snackers: Deputy Motupiko House Leader
Madison Wagner: 'The Rivers' Magazine

Year 8

Jada Jelinek: Junior Tadmor House Leader
Shakaia Kennett-MacDonald: Junior Motupiko House Leader
Emma Wallace: Glenrae Bus Monitor, Junior Baton House Leader

Year 5

Ella Walker: Student Librarians
Atlanta Linstead: Student Librarians

Tapawera Area School Sports Person of the Year

K & T Fenemor Award

Sarah Jones has made progress in a variety of sports during the first half of the year at school, National Area Schools Tournament and at a Regional level. This has come at a time of restrictions and cancellations.

In Term One, regional placings were achieved at the Tasman Athletics champs in Javelin and Triple Jump. Alongside selection leading on from the Area Schools' Tournament in Reefton to trial in Ki-o-Rahi, Basketball and Volleyball at the TOSI trials in Rangiora. This student was also a strong participant in House competition, finishing as champion in Athletic and runner –up in the swimming event. This year a senior volleyball team competed at Saxton on a weekly basis in the Legends League for which this person was a consistent member, which then went on to win the Regional Division 2 and Golden Bay competitions.

Term Two was a busy term with Badminton practice leading on to representation at the regional competition resulting in a team runners-up spot. Then there were the TOSI trials resulting in a surprise selection in Football and a ticket to travel to Dunedin for the National Area Schools event. This was a successful trip, after travel delays for some, which culminated in a TOSI second place for Football, a South Island selection and then a National recognition in this code. After a quiet

period, Term Four provided another opportunity in Volleyball at the regional intermediate competition. Sarah was able to help lead this team to a runners-up placing.



Sporting Excellence

Athletics

<i>Mr & Mrs G Chamber Cup</i>	<i>Junior School Champion</i>	Kynin Kratz
<i>JG Wadsworth Cup</i>	<i>8 & 9 Yrs. Champion Girl</i>	Grace McGaveston
<i>RS Fenemor Cup</i>	<i>8 & 9 Yrs. Champion Boy</i>	Ollie Bennett & Ollie McGaveston
<i>Mr & Mrs B Hodgkinson Cup</i>	<i>10 & 11 Yrs. Champion Girl</i>	Pippa Rata-Hey
<i>Mr & Mrs A Moffitt Cup</i>	<i>10 & 11 Yrs. Champion Boy</i>	Bronco Kennell-MacDonald
<i>Overview Holdings Ltd Trophy</i>	<i>12 & 13 Yrs. Champion Girl</i>	Jada Jelinek
<i>Overview Holdings Ltd Trophy</i>	<i>12 & 13 Yrs. Champion Boy</i>	James Snackers
<i>Mrs HE Clemens Cup</i>	<i>14 & 15 Yrs. Champion Girl</i>	Sarah Jones
<i>Patricia Clemens Cup</i>	<i>14 & 15 Yrs. Champion Boy</i>	Nivan Jelinek
<i>Mrs GK Morrow Cup</i>	<i>Senior Girls Champion</i>	Lacey Burnett
<i>Mr GK Morrow Cup</i>	<i>Senior Boys Champion</i>	Matua Carleton-Heta
<i>Principals 400m Challenge</i>	<i>Boys Champion</i>	Haylen Leabourn-Mathews
<i>Principals 400m Challenge</i>	<i>Girls Champion</i>	Grace McGaveston

Swimming

<i>PTA Trophy</i>	<i>10 & 11 Yrs. Champion Girl</i>	Hannah Newport
<i>Tapawera Four Square Trophy</i>	<i>10 & 11 Yrs. Champion Boy</i>	Bronco Kennell-MacDonald
<i>BB Bryant Memorial Trophy</i>	<i>12 & 13 Yrs. Champion Girl</i>	Emma Wallace
<i>Overview Holdings Ltd Trophy</i>	<i>12 & 13 Yrs. Champion Boy</i>	Kobi Mitchell
<i>Tapawera Four Square Trophy</i>	<i>14 & 15 Yrs. Champion Girl</i>	Catlin Newport
<i>PTA Trophy</i>	<i>14 & 15 Yrs. Champion Boy</i>	Levi Sosich
<i>Stanley Brook WDFP Trophy</i>	<i>Senior Girls Champion</i>	Lacey Burnett
<i>Tapawera Four Square Trophy</i>	<i>Senior Boys Champion</i>	Ryan Jones

Rugby

<i>Tapawera Rugby Club</i>	<i>Contribution to School Rugby</i>	Flynn Morgan
<i>Brent Keown Memorial Cup</i>	<i>Most Improved Player</i>	Kaya Hura

Netball

<i>Joanne Peter Memorial</i>	<i>Most Improved Player</i>	Amelia Hoak
<i>Joanne Peter Memorial</i>	<i>Contribution to School Netball</i>	Grace Mytton
<i>P & S Fenemor Family Trophy</i>	<i>Contribution to Primary Netball</i>	Grace Mytton
<i>Coach Force Cup</i>	<i>Student Coaching School Team</i>	Grace Mytton

Basketball

<i>C Moffitt & R Galletly</i>	<i>Contribution to Boys Basketball</i>	Ryan Jones
-----------------------------------	--	------------

Football

<i>NAL Trophy</i>	<i>Most Improved Football Player</i>	Sarah Jones
-------------------	--------------------------------------	-------------

Golf

<i>Ken Drummond Trophy</i>	<i>Best Senior Player</i>	Flynn Morgan
----------------------------	---------------------------	--------------

Harriers

<i>Langford Trophy</i>	<i>Achievement in Harriers</i>	Bronco Kennell-MacDonald
------------------------	--------------------------------	--------------------------

Volleyball

<i>B & B Hodgkinson Trophy</i>	<i>Contribution to School</i>	Tomas Girodo
------------------------------------	-------------------------------	--------------

House Awards

<i>D & K Griffith House Trophy</i>	<i>Most Participation Points</i>	Tadmor
<i>S Fenemor House Trophy</i>	<i>Most Performance Points</i>	Tadmor

Book Discussion Group

Meet: 4th Thursday in month, 10am
 Contact: Paula Davis ph. 5224341

Federated Farmers

Contact: Brent Hodgkinson
 Ph. 5224381

Golden Bush Garden Club

Meet: 2nd Thursday of month
 Contact: President, Kathy Whyte
 5224550, or Shirley Percy 5224924

Golf

Meet: every Sunday, Ladies 9 hole
 every Tuesday
 Contact: Gary Oldham ph. 0278080578

Historical Society

Contact: Barbara Carleton ph. 5224317

Informer

PO Box 15 Tapawera
 Email tapawerainformergmail.com

Justice of The Peace

Peter Phillips ph. 5224313
 John Ellis ph. 5224239
 Brent Hodgkinson ph. 5224381
 Francine Currie ph. 5224245
 Susan Fenemor ph. 0275224009 (text
 during school hours)

MENZSHED

Contact: John Wilmshurst ph. 5224616

Netball

Contact: Susan Fenemor ph.
 0275224009 (text during school hours)

Ramblers

Meet: each month
 Contact: Shirley Percy ph. 5224924

Shedwood Hall bookings

Contact: Tania Higgins ph. 5224587

St Andrews Church Stanley Brook

Services every Sunday. Cup of tea
 afterwards.
 Contact: Lee Winter ph. 5224160

St John Ambulance, Tapawera

St John: ambulance – dial 111,
 Contact: 0800 785 646 ext. 3227

Tapawera Community Centre

Bookings: Carolyn Ellis ph. 027 823
 7247, email tapaweraTDCC@gmail.com

Tapawera Creative Fibre

Meet: every Wednesdays, Memorial
 Hall, Tapawera
 Contact: Dallas Robinson ph. 5224984

Tapawera Dentokan Jujutsu Club

Contact: Tony Hammersley ph. 5224609

Tapawera Food Bank

Contact: Suzzi Lankshear ph.
 0277491063

Tapawera Music/Country Music Club

Meet: Alternate Sundays, Tapawera
 Hotel 7:30pm
 Contact: Elaine Douglas ph. 5418612

Tapawera Op Shop

Contact: Suzzi Lankshear ph.
 0277491063

Tapawera Playcentre

Meet: Mon & Thur, 10am -12:30pm
 Memorial Hall ph. 5224456

Tapawera Rugby Football Club

Bookings: ph. Judy Benjamin 5224445

Tapawera Connect

Contact: Phoebe Quinlivan ph. 021 211
 6730 or 522 4929, email:
tapaweraconnect@gmail.com

Tapawera Sport & Recreation Society

Contact: Judy Benjamin ph. 5224445

Tapawera Volunteer Fire Brigade

Contact: Dean Millar Chief ph.
 0279651399; Ted Oakly Deputy Chief
 ph. 0210704033

Tapawera & Districts Community Church

Service: St. Peter's Tapawera. 2nd &
 4th Sundays at 3pm
 Contact: Church Office 03 541 8883
 Vicar: Rev. Don Moses ph. 541 8883

TAS / Community Library

Mon, Wed & Thurs 9:30am-3:15pm,
 Tues & Fri 10am-2:30pm. Contact:
 Lareen Bonnington ph. 5224149
 Library ph. 5224337/ext. 213

Tapawera & District Community Council

Meetings: 3rd Tuesday of month,
 7:30pm Tapawera Community Centre

TESSI

Contact: Bruce Whyte ph. 5224550

Toy Library

Open Monday & Saturday 10:30am-
 11:30am Contact: Jan ph. 5224102

Visual Arts Society Tapawera

Contact: Dallas Robinson ph. 5224984

**What's on
February**

Music/country music club,
 Tapawera Hotel 7:30pm. Date
 to be confirmed

10 Garden Club, 4960 Motueka
 Valley Highway, 11:30am

15 TDCC monthly meeting,
 Community Centre, 7pm

20 Articles for Informer close 5pm

22 Tea and Talk, Memorial Hall
 10:00am - 12pm

**GP & Nurse at
Tapawera Clinic**

(during school term time):

GP clinics – Mondays
 9am – 12 midday

Nurse clinic – alternate
 Tuesday mornings - phone
 541 8911 for dates

* *Do you have an event you
 would like listed in What's On?*

* *Or a community group or
 organisation you would like
 included in the directory?*

If so, please email
tapawerainformergmail.com