

Informer, PO Box 15, Tapawera
email tapawerainformergmail.com



This year we were very fortunate to be able to hold our annual Vast Art and Craft Exhibition. Considering everything that is happening at the moment it went off very well, with several new exhibitors ensuring that once again there was a wide selection of work to see.

We would like to thank our kind sponsors: - Impressions Art Supplies, Tapawera Four Square, Dawn and Mike Farnsworth, Dinkie and Peter Phillips, Crafthaven and Brian Robinson. The winners of the five raffles have been notified - the majority were local folk. The People's Choice award (donated by Impressions), went to Angela Miller. I have included an example of her work.

Finally I would like to thank all who helped in whatever way to make our exhibition a success. We are looking forward to next year's exhibition which will be VAST's 20th Anniversary.

Shirley Percy.



By A Miller.



From the Library

Did anyone hear the interview with Marion Keyes on breakfast TV on Feb 15th? What a lovely lady and her books are so good. We have eight of them in our library including 'Grown ups' written in 2021. Can't quite call it her most recent as the interview was about her very latest which is a sequel to Rachel's Holiday which we have here.

We also have the latest Jodi Picoult novel 'Wish you were here'. No charges for new books in our library!

A book I'd love to recommend is 'Eleanor Oliphant is completely Fine' by Gail Honeyman. This book has won Awards and is such a good read.

You can check out our catalogue on our website nz.accessit.online/TPW00 (last two digits are zeros) and if you don't want to come into the library just search the catalogue and see if the books you like are available and then email us on library@tapawera.school.nz or phone 5224337ex 213 and we can leave them at the office for you to collect. The advantage of this is that the office is open for longer hours than the library.

We were open for a few hours a week during the holidays but not many people took advantage of this, a shame really as the library was a nice cool place to be during the hot weather. Our chess club continued at this time too and has also got off to a good start for this year.

We have a new Richmond collection on our shelves now and hope we have chosen books for the enjoyment of everyone. For those new to the community, twice a year we choose about 200 books from Richmond on a long loan to add some fresh interest to our own collections.

If you are new to the community please remember we are a library for you as well as for the school students and we do have some amazing books, in adult fiction and non-fiction, young adult books make great reading for people with less time to sit down. We have a lot of local history books too.

You will find us behind the tennis courts at the library. Our hours are Monday Wednesday and Thursday 9.30-3.15 and Tuesday and Friday are 10-2.30.

Phone, email and website as above.

Laree for the library team

Real Estate is our business

SUDOKU

1				6	8			9
	8	4	9					
	3			4	2			
			5				7	
7	9			3		4		
	5				4	9		
	4				3			
		6			7			4
		2		8	6			3

LEVEL: Hard H10



CALL US TODAY

to discuss how we can achieve great results for you.

BAYLEYS
ALTOGETHER BETTER
 VINING REALTY GROUP LTD, BAYLEYS LICENSED UNDER THE REA ACT 2008

Jilly Perry
 022 193 9441
 jilly.perry@bayleys.co.nz

Lydia Heyward
 027 432 8532
 lydia.heyward@bayleys.co.nz

RURAL POST, RD 2 Wakefield
 Contact Nick & Jackie Costley for all your RD 2 Wakefield postal needs.

Including prepaid envelopes, stamps, courier items and local freight from Wakefield, Dovedale and Tapawera. Prescriptions from Wakefield.
Phone 5418581

Mark & Tania Gill
 T/A MTJ Transport
 RD2, Nelson
 NZ Post Rural Contractors
 Servicing
 Motupiko-Korere-Kikiwa-Tophouse-St Arnaud-Glenhope

For all your Postage, Milk & Courier Freight
 Operating 3 Days Weekly
 (Monday-Wednesday-Friday)
 Departing Nelson 8.00am
 Phone 546 6295

Material & adverts for Informer

All material is to be sent to either:
 Informer, PO Box 15, Tapawera, 7055
 or email- tapawerainformergmail.com
To be received by 5pm
 20th of the Month

If emailing a word document please send in Word as an attachment using Font Aerial Narrow size 11
 If sending an advert please save as a jpeg before sending.

Please check your emails to see your article/advert has been received as sometimes there needs to be alterations.

Advertising rates for Informer

Standard advertisement	
1/4 page advert	\$25
1/2 page advert	\$35
Full page advert	\$50

Adverts that require editing may cost extra

The Informer is produced and published by the Tapawera and Districts Community Council, PO Box 15, Tapawera, 7055;
 email: tapawerainformergmail.com
 Circulation 635
 Editor: Gill Hammersley
 The Editor and Publisher try to ensure information published is truthful

and accurate, but do not accept any responsibility for errors or omissions, or for any consequences of readers' relying on the information published. Opinions expressed by contributors may or may not be endorsed by the Editor or Publisher.
 All material submitted, whether editorial or advertising, is accepted at the discretion of the Editor and the Publisher.

“Branches From Lone Oak – James Gibbs Family Reunion”



On the 15th March 2022 it will be 180 years since emigrant ship “The Bolton” arrived in Nelson bringing many family groups to start their new life on the other-side of the world. Passengers included well-known family names such as Andrews, Brown, Heberd, Holland, Kidson, King, Newman, Norris, Sutton and Gibbs to name but a few of the 285 passengers that left Gravesend late October 1841.

James Gibbs and his wife Ann (nee Robinson) originally squatted in the Wakapuaka area of Nelson raising potatoes and wheat. Having already lost 6 children James and Ann had two more children George (b. 1844) and Martha (B.1846) before her death of perinatal poisoning following the still birth of their 9th child in April 1848.

James was an enterprising farmer and whenever he was able, he would purchase a cow, a pig or a sheep from incoming vessels.

After Ann’s death James took his two young children and some cows inland – most likely by boat, landing in the area around Cotterell Road. From there they walked to the overnight camp at Spring Grove just north of the Spring Grove Church of Christ. This was one day’s walk from where they exited the river craft.

When James rose in the morning, he found his cattle had strayed. This was a huge loss to the family, so he went in search of them. Luckily, he found the cattle on the land still being farmed by his descendants today. Here, at the top end of Gibbs Valley Road, Wakefield James squatted until in 1851 he was given a Crown Grant for a small portion of the land and the rest he bought for one pound per acre. He named the farm Lone Oak after the best farm he worked on in Hampshire, England.

James needed someone to look after his young children George and Martha and he employed the young Charlotte Verry from next door. James and Charlotte were married in 1849, being the 5th marriage in St John’s Church, Wakefield and together they had another 16 children.

George, known as Geordie, married Ann Susannah Brown from Spring Grove and farmed in Mararewa and Korere for the rest of their life. They are buried in Mararewa Cemetery. They had six daughters and two sons. Descendant surnames include Needham, Mead, Fugle, Fisher and Fawcett.

Colin and Marilyn Gibbs are organising a James Gibbs family reunion for the weekend of the 28 – 30th October 2022 and are keen to contact George and Ann’s descendants. Phone 03 5418435 or email marilyn.gibbs72@gmail.com

Marilyn Gibbs

Senior Snippets - By Karen Carleton, Seniors Wellbeing Coordinator Tapawera Connect

Hello everyone, another month has seemed to have gone past very quickly and here we are again. On a personal note I would like to take the liberty of thanking hugely all the wonderful people in our community who have helped Mum and Dad (John and Geraldine Carleton) organise themselves for their big move down to Riwaka. A recently held clearing Sale was enjoyed by many around our district and provided a great catchup session. It’s not easy to make the big move to town, especially when you’ve been around this area most of your life. Dad was in Stanley Brook for 68 yrs, since he was 8 yrs old. Mum for 40, but with getting older comes change, change for all of us, sometimes the changes are easier, sometimes they take a bit of getting your head round. I know I can speak for Mum and Dad in saying without the fantastic and warm support from old friends and family this new chapter in their lives would be so much harder. So a BIG thankyou to everyone.

TEA AND TALK

Tea and Talk will be running on the last Tuesday of March (29th) 10 - 12 at the Memorial Hall for ages 65 plus. Please come along and enjoy the Free cuppa and Chat. This Tea and Talk we will have a guest speaker Mary-Anne Hardcastle from Primary Health speaking on Advanced Care Plans. For those that missed the last Informer, Mary-Anne gives a brief presentation on the process behind Advanced Care Plans. This is an opportunity to better understand what it means to have a plan, to share personal values, life goals and preferences regarding medical care. It’s a gift your loved ones who might otherwise struggle during a medical emergency, make choices about your care.

Hope to see you there,

Kind regards Karen

Our Community Vision Statement!

FILL IN THE MISSING WORDS AND BE IN TO

WIN A \$100 PETROL VOUCHER!

ENTRIES CAN BE POSTED ON THE NEW COMMUNITY WEBSITE!

tapaweracommunity.co.nz

OR DROPPED IN THE BOX AT THE CAFE
(BE SURE TO ADD YOUR NAME AND CONTACT DETAILS)

The people of and
the Surrounding Valleys are
a Caring & Resilient

We are Guardians of our Mountains and Rivers,
Growing in a Way that Values our heritage & Building
a sustainable Future.





Our Community Vision Statement!

After almost a year of workshops, sausage sizzles and discussions, TDCC and Tapawera Connect met with Kindra Douglas from Inspiring Communities, and Eva Lawrence from the Department of Internal Affairs and put together our Community Vision Statement. We condensed and crystalised all of the ideas that have been shared and came up with a vision statement which we hope encapsulates all that you have said. Check out the poster competition to see what it is! We hope you like it!

New Community Website!

In collaboration with the TDCC, Tapawera Connect have been working with local website developers Danny and Ana of Sugarcube Studios to put together a community website. This is primarily for our community members to have easy access to local information (including a digital version of the Informer), and can also be used for people visiting the area. We would love your help in making this site as awesome as possible so go check it out and send us any feedback or ideas you have!

(See the poster to enter the draw to win a \$100 petrol voucher!)

Community Led Development Application

Applications are now open for the Community Led Development Programme (CLDP) with the Department of Internal Affairs (DIA).

If we are successful in this application, our community will enter into a collaborative partnership with the DIA that will support all of us in:

- Identifying, prioritising and actioning projects that reflect community needs and wants and
- Building momentum and capacity as more individuals and groups are involved and empowered.

It will also mean we will have greater access to funding for our community projects!

If we are successful, a working group will likely be set up in much the same way as the TDCC are elected on, with nominations and voting. This group would ideally have representatives from each of our various community groups and key stakeholders (i.e. you guys!)

If you would like to get behind this, keep an eye out in the Informer, or on our Facebook page (Tapawera Connect) or the Community Website (tapaweracommunity.nz) for opportunities to show your support in person when the assessors come out to meet with us.

HANDYMAN

- * General property maintenance
- * Clean out/tidy up
- * Water blasting
- * Gardening
- * Chain sawing
- * Repairs
- * Demolition
- * Any farm work

Fair hourly rate. Honest and hard working.

Local references available.

Please enquire to Jeremy Ellis (03) 522 4460



VET

"...for all creatures great & small..."

**Regular Tapawera visits
discounted mileage
T&Cs apply**

Ph 544 1200

info@tcvet.co.nz * www.tcvet.co.nz

**25 Edward Street, Wakefield
35 McGlashen Avenue, Richmond**



24 hour emergency vet

Covid Self-Isolation Support in Tapawera



in collaboration with

TAPAWERA & DISTRICTS

T D C C

COMMUNITY COUNCIL

&



Tapawera
CONNECT

How can we support each other when Covid arrives in Tapawera and surrounding district? We can best serve each other by ensuring support is available for anyone who gets sick or if the household needs to isolate. The Tapawera Covid Response Team is coordinating this, which is in addition to support provided by the Ministry of Health and other government agencies.

If you ask us for help, we will help regardless of your vaccination status – it's locals looking after locals.

What we can do?

- Pick up and drop off groceries, prescriptions and other medications you may be in need of,
- Take domestic animals to the vet,
- Be a phone buddy if you are on your own,
- Practical things you may not be able to do because you are self-isolating or feeling rough,
- Provide information on who to contact if you are needing any help whether it be for finance, mental health, food support and Covid related issues etc.

What you can do?

- If able stock up on practical medications (cough lozenges, throat spray, pain relief, cough liquid etc);
- If able stock up on other practical items (tissues, rubbish bags, antibacterial wipes/spray etc);
- If you are willing to help in anyway please let us know.
- If you have any cold or flu-like symptoms, self-isolate and contact your **GP provider** or the **Covid-19 Healthline 0800 611 116**.
- There will be a letter box drop throughout Tapawera and surrounding area with a Covid readiness checklist. Please fill this out as it will give us important information if you are in need of help. This information will be 100% confidential.
- And be kind by checking in with those around you.

What's coming up?

- Letterbox drop with the Covid readiness checklist and other important information.
- We'll supply all volunteers some guidelines so we can help safely.
- Regular information updates to let you know what other support the Tapawera Response Team is able to help with. We will share these updates in the Tapawera Informer as well as via the Tapawera Information and Support Group Facebook page (and occasionally through your mail box).

Any questions or suggestions, please email lankshear@mail.com or call one of the names below.

Suzzi Lankshear
0277491063

Gavin Scoble
0277576665

Phoebe Quinlivan
0212116730



2022 Actions of the Motueka Catchment Collective

Hope the year is off to a good start for everyone and that the summer has been a good one. The recent rain has been very welcome to see the paddocks greening up again. Presumably we will have another hot spell and appreciate river swims before it gets too cold.

As we go forward this year, we have the prospect of omicron spreading through our community. We had planned a meeting in March to share the findings on the research that TDC have been doing over the summer viz gravel in the Motueka river. It follows on from key interest of members and the meeting that we had on flooding last October. We have requested that the TDCC (Tapawera & Districts Community Council) invest in some equipment for the Community Centre so that we can do zoom meetings there. They are exploring what is required but have indicated support, which would potentially be helpful for a range of events & groups in the Tapawera and upper Motueka area. It would mean being able to be more inclusive when using zoom as some people don't have that internet capacity and it enables a smaller gathering to be able to take part in such meeting events, given that it's unwise to hold larger scale meetings in person for the time being. So, we have scheduled the next main meeting for the Motueka Catchment Collective to be on Monday, 11th April which is the week leading up to Easter, and it would be on Zoom. It would follow a presentation that is being made by TDC staff to Councillors on the research findings related to gravel. It is a not a simple topic.

There have also been various moves behind the scenes to further develop the Collective's Action Plan. Our meeting in December, led by Annette Litherland of NZ Landcare Trust was a really good start. We had good representation from eight of the tributary/catchment areas as well as Sherry catchment group, TDC, forestry & ICM stakeholder input. We agreed on a revision of our Aim so that it now reads:

From an informed and respectful standpoint, facilitate weaving the communities of the Motueka catchment together to ensure the wellbeing of the freshwater system and connected environment.

We looked at what issues the Motueka River/catchment faces in the next twenty years and the outcomes that we would like to see. From that we went through a prioritisation voting exercise to determine the key issues to focus on. The top six came out as:

- * Sediment (including gravel) 13

- * Weeds – especially OMB 11
- * Human management of riparian margins 8
- * Flooding resilience and climate change 7
- * Water quality – swimmable/drinkable 7
- * Predator control 6

We also discussed the governance for the Catchment Collective (MCC). The Tasman Environmental Trust (TET) will provide project management services through their Community Conservation Hub <https://www.tet.org.nz/conservation-hub/> which enables us to better solicit for funding and support. The MCC is an overarching group for the whole catchment and in some respects, we need to look at a whole-of-catchment approach but obviously there are different priorities in different parts of the catchment and different communities with differing actions. Project work and actions would then be mostly at this more local level.

Annette is continuing to develop our Action Plan and she is also drafting up a survey to go out to landowners in the catchment. There are some interesting conversations going on in relation to actions addressing some of these priority issues and we are looking to source funding and support this year which means fleshing out details on priority actions more so at sub-catchment level. If your sub-catchment or local community wants to be part of this, we want to hear what your key issues are and how to address them. Thanks to those who have communicated those already. You can contact Annette on 0277244445 for further details or email Jo at motcatchment@gmail.com.

TAPAWERA ELECTRICAL

Tony Stephens

Registered Electrician

Ph/fax 5224257
0276249489

All electrical needs
Domestic & Rural

Wiring, faults, some home appliance repairs
New heat pump installations



Free Quotes
Competitively priced



2021

'The Rivers'

TAS School Magazine

Tapawera Area School Magazine, date to be handed out, TBC. A huge thank you to the student magazine team, they have stepped up to the huge undertaking and have grown so much with the challenge. They are:

Year 13: Janette Chetham-Student Editor, Tomas Girodo, Teana Coleman

Year 12: Lacey Burnett, Amy Cumming-Holden, Krystal Hickey

Year 11: Sam Hatton

Year 10: Cheyenne Phyn.

Year 9: Madison Wagner

A mention of thanks to the editorial team: Susan Fenemor (Editor), Tracey Mytton, Erin Hume, Jo Hillerby, Jo Simpson, Jeannie Gillespie, Janeen Strawbridge, Jeff Rowland and Marian Townsend.

Sponsors who have contributed to the production of The Rivers:

Gazza's Sign Art (Gary Oldham)

Wadsworth Motors (Jeff & Sue Wadsworth)

Quinney's Bush (Mark or Marama Quinney)

Morley's Motorcycle & Marine Ltd (Ian Robinson)

Voltz (Julian McGaveston)

OneFortyOne (Lees Seymour)

Golden Bay Dolomite (Ed Solly)

Solly's Contractors (Ed Solly)

Tapawera Electrical (Trish & Tony Stephens)

Op Shop (TDCC)

Rural Courier (Joe Bradley & Julie Gibbs)

Pete's Lemonade (Pete & Marilyn Suy)

IMB Construction Limited (Richard Cole/Brian Mazure)

NJC Delivery Services Ltd (Jackie & Nic Costley)

Nelson Honey Marketing Ltd (Cropp Family)

Andrew Burnett Contracting Ltd (Andrew Burnett)

Hinetai Hops (Dean Palmer)

Wakefield Quarry & Limeworks (Phillip & Yvette Dick)

Joe Higgins Contracting Ltd (Joe Higgins)

Wakefield Pharmacy (Scott Fry)

Back 2 Basics Bookkeeping Ltd (Karen Jones)

South Fuels Ltd (Simon Rae)

Collins Transport Ltd (Aroha & John Collins)

The Vet Centre Richmond (Andrew Conroy & Staff)

www.PageBorders.net



Words from the Principal
(Newsletter 2)

Kia Ora

Our school calendar is quickly filling up for the term. This week Yr 0-3 went to the Nelson Museum on Tuesday and Yr 4-6 went to Whenua Iiti on Thursday. Both outings are curriculum based and are woven into the teachers planning for the term.

Our EOTC (Education Outside the Classroom) went rafting as part of their NCEA credits. Tomorrow 11 senior students are heading off to NMIT and Whenua Iiti to start their Trades Academy Courses for the year. A range of courses are being undertaken eg. Adventure Tourism & Leadership, Predator Control, Uniform Services, Hairdressing, Art 3D, Mechanical Engineering, Carpentry, Hospitality and Mechanical Engineering with Evolocity and will continue every Friday. Thank you Willie for driving our students to and from Nelson. The partnership between home and school is vitally important. If you have any questions or concerns, your first port of call is always to contact your child's teacher. Under the Red Level setting, please contact them initially via email or by phoning the school office 03 5224337.

Thank you for sending your children correctly dressed in our school uniform. We are aware of some supply issues and are currently liaising with The Warehouse on this.

Our main property focus for this year and in the future will be replacing old roofing iron, upgrading the senior outside area, art room and pod upgrades. Also our Waharoa (entrance way) journey will start with students/staff and Tim getting ideas together.

A huge big thank you to Susan Fenemor and her team for The Rivers 2021 Year Book. What a fantastic effort. I would also like to thank all our sponsors for making this possible Sunhats – just a reminder that children are required to wear these at break times otherwise they will have to play under the trees or other shaded areas.

Bus Code of Conduct – these were sent home last week.

Please sign and return to the school office as soon as possible. If you have misplaced your copy please phone the school office and we will send a copy home.

The school/community stall situated inside the entrance to the school is a fantastic idea and is working very well. It is great to see exchanges of goods happening. On a slightly negative side, we have had an incident last night where goods were damaged and strewn around the nearby grounds. Please if you see this happening, discourage the culprits. The school's security camera is operating in this area.

Please check out our Facebook page and see all the wonderful things happening in our great school. Posts are made most days and our newsletters are sent out every second Thursday.

Ngā Mihi

Angela Sloane

Tumuaki/Acting Principal



Angela Sloane Acting Principal

Key Dates Term 1

- 21 Feb Yr 0-6 Swimming Sports
- 24 Feb Yr 7-13 Swimming Sports
- 03 March NCEA Parents Evening
- 09 March Yr 7-13 Athletics
- 10 March Parent Interviews
- 18 March Whole School Tabloids

Words from Tanya Snackers

Year 0-8 News

Key words for 2022 FIRE = Friendship, Integrity, Respect, Effort

Term 1 Friendship

*Welcome back to another busy year. It is great to see happy and keen students back and learning. I am super impressed with how they are coping with **wearing a mask**. Well done*

*I would like to acknowledge the work done by **Carolyn's Ellis -Oldham**, Board of Trustee's Chairperson hard work over the summer break in ensuring we had another member on our team to help guide and support our school. Thank you so much.*

Margy Wallace as our relieving **Reading Recovery teacher.**

*A reminder that we were successful in our application for the **Creatives in Schools** programme. Marion Townsend will be released from her class (Thursdays) to work with all year 0-8 students and our local artist, carver Tim Wraight, on a school project.*

*Thanks to Susan Fenemor for all your hard work in making the school magazine, **'The Rivers'** has just arrived in school, it looks so good and thank you to the rest of the team behind all the articles.*

< Tapawera Area School >



Tapawera Area School State school Liked

Check out our **new Facebook** page and 'like' it to keep up to speed with events happening at the school.

WOW what a great start to the year, **school uniform** is looking fantastic.

Providing gentle guidance when you need it most.



Simplicity Funerals

Simply respectful. Simply affordable.



Anna Loach
Manager / Funeral Director
Dip FD Reg. FDANZ

**NELSON & TASMAN WIDE,
WE'RE PART OF YOUR COMMUNITY**

Phone 03 929 5145 | 276b Queen Street, Richmond
nelson.simplicity.co.nz



Reporting to Parents A reminder that you can contact teachers at any time for an appointment re your child's learning, just talk to Barbara at the office to organise an appointment. Otherwise we have face to face interviews this term.

Term 1 Parent / Teacher / Student conferences Thursday 10th March

Term 2 Written reports

Term 3 Parent / Teacher / Student conferences

Term 4 Written reports

Download the **Skool Loop** app (as seen on TV) on your Android or Apple device and tick the boxes that are relevant to you. Notifications regarding school events and emergency situations will be automatically sent to your phone. It is a quick and easy way to get messages and newsletters.

Around the School

Mobile Dental Bus Unit will be at Tapawera Area School 28 February -11 March

Re-usable coffee cups Glass - with our school logo \$10

Library News: our website nz.accessit.online/TPW00 (last two digits are zeros) to see what we have and if it's available, give us a call or email library@tapawera.school.nz

House Leaders



Back Row: Mrs Sloane, Matt Koerve (B), Amy Cumming- Holden (B), Rosa Cameron (M), Krystal Hickey (M), Sam Hatton (T), Finlay Barker (T)

Front Row: Alyse Clarke (B), Izak Walker (B), Madison Wagner (M), Kiana Collins (M), Cheyenne Phyn (T), Charlotte Ashton (T), Mrs de Kriek (B-Baton, M-Motupiko T-Tadmor)

Bus Leaders



Korere/Kohatu – Kara Page, Caitlin Newport & Rosa Cameron



Tui/Matariki - Dylan Eyles, Mitchell Bean, Ameila Hook & Sarah Jones



Glenrae - Tamati Bright, Cain Walker & Emily Walker



Dovedale - Amy Cumming- Holden, Shanina Guyton, Jamie McNab, Levi Bint and Flynn Morgan

Year 9 Creative writing – Show don't tell . . .

On being spooky:

As soon as I took a step near the house it felt cold.

- Izak

On being nervous:

I could barely move, I could feel the butterflies in my stomach becoming bigger and bigger.

- Shakaia

Our years 3 - 8 have had a great day learning **Baseball** skills with Cooper Grant. There is a country league happening on a Wednesday night at Lower Moutere - if any students are interested, please get in touch with me Belinda Grice sportsc@tapawera.school.nz

WADSWORTH MOTORS LTD

Over 90
Years of
Service

- Fuel 24 Hour Card Access.
- W.O.F Testing.
- Automotive Services and Repairs.
- Enzed Hydraulic Hose + Fittings.
- Batteries, Tyres, Oils, Parts & Accessories.
- MTA Assured.
- Coach Charters & Mini Bus Hire.

E. wadsworthmotors@xtra.co.nz
100 Main Rd, Tapawera



P. 03 522 4248
www.wadsworthmotors.co.nz

voltz

ELECTRICAL LTD

Julian McGaveston
Registered Electrician

For all your domestic, commercial
and rural electrical needs.

T: (03) 522 4488
M: 021 566 645
F: (03) 522 4698

E: voltzelectrical@silkweb.net.nz

2227 Wakefield Kohatu Hwy. RD2. Wakefield 7096



All Accounts Matter LTD

For all your accounting and tax needs!

If you are looking for a new Accountant, now is
the perfect time! I would love to find out about your
business and have a no obligation chat about how
I can help you. So don't wait, call me now!

Sonia Emerson Chartered Accountant

GST | Tax Returns | Payroll | Bookkeeping | Cashflow Forecasting
Management Reporting | Rental Statements | Farm Accounts



myob

ACCOUNTING SOFTWARE

2020/2021
Certified
Consultant



M: 021 221 1009 | P: 03 541 9005 | sonia@allaccounts.co.nz
367 Wakefield-Kohatu Highway, RD1, Wakefield 7095

www.allaccounts.co.nz



Jill Hall Yr2-4 replacing Gemma Walsh who's on Maternity Leave

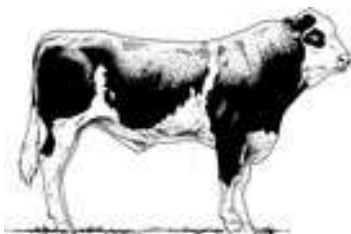


Sabine Reinert Yr5-6 replacing Mel Grant
As told by Susan Fenemor, Teacher

Gillespie—1

MAF approved

Home kill butchery



03 547 7746

Butcher / journeyman

Specializing in quality small goods

Factory: 111 Bolt Rd, Nelson

The Lady Tradie



Has your husband got a **round**



Spring has sprung
and the grass has riz !
Do you wonder where a handyman is ?
Can't get one ?

Then call " Jen the Lady Tradie "

for all your outside spring clean-up jobs

* Gutters full of leaves;

* Lawns that are starting to bolt;

* Waterblasting those slippery paths

and all that spring growth that just might get away on you.

*** Local Person * Referees Available ***

Consideration & discount shown towards Senior Citizens

FREE QUOTES

Contact Jennifer

Phone or text: 027 544 2663

After hours/leave a message: 03 522 4453

Email enquiries to: jentheladytradie@gmail.com

Tasman Bay Chiropractic 64 Oxford Street Richmond



Keeping you in the game since 2002

Referrals, families and
all new clients welcome

Visit our website or call for more information

tasmanbaychiropractic.co.nz

03 544 4554

Monday-Saturday

Find us on



Our river is called DOVE – this is our catchment journey

Who we are



Our catchment consists of farmers and life stylers.



Some of us have been in this catchment for 130 years.



We have a long-term vision for our catchment (~1000 years), because we are only 'passing through'.



We deeply care for our river

What do we do well?



We keep out stock



We plant along our river

What could we do better?



Communicate with each other



Record and report our actions better (= how many km of planting)

What are our goals?



To have as many people in the catchment on board as possible



Caring for the river together without being embarrassed

What are our obstacles?



Maintenance



Time



Perceptions



Costs

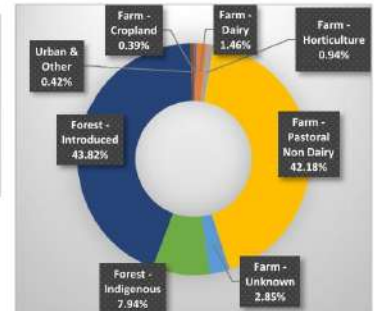
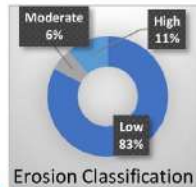
Our Vision – 1000 years from now

A river in good health that is fishable & swimmable. We will achieve this by improving its water quality.



Our Land - today

We would like to quantify what actions we have done in our catchment, but can't at this stage



Dove Catchment Land Use

We already see an increase in wildlife and biodiversity on our land



"Our river is the best babysitter – our kids spend hours playing in it."

Our Land – next 12 mths

1. Creating a Dove Catchment Group
2. Working on a project/ workshop together
3. More pest management

From us to you

1. "It is important to share what we know about land management and restoration: the things that worked and the things that didn't work."

2. "You need the will to restore, then an idea will turn into action."

3. "Sometimes you don't have the time or the money for restoration. As long as you keep the thought in your mind, it will happen one day."



Dove Catchment Nursery

"From quiet homes and first beginnings, out to undiscovered ends..." Hilaire Belloc

This quote sums up the Dove Catchment Community Nursery.

Our catchment interest started after an inspirational Beef and Lamb seminar where we listened to Trevor James TDC, and Annette Litherland Landcare Trust, and we went out into a river to experience a SCHMAK test, the passion of the presenters inspired many of us to go home and see what we could do.

A note was put into the local Dovedale News about a meeting where TDC reps and Forest reps and locals were invited to see if we could get a group going.

We were all interested in doing things, but absolutely not in committee meetings! We hooked ourselves onto the Upper Motueka Catchment group so we could be part of the larger collective that would be under the Tasman Environment Trust.

We were also invited to attend Moutere Catchment seminars and the start of the Mid Motueka catchment group.

We had more interest from community members when we held a potluck lunch to gauge interest, we had another group of residents meet up with Kati Doehring, Cawthron Institute, to map land use. We had planned an information get together after this, but Covid trashed that thought!!!

Meanwhile in a corner of a section, Bill, a champion seed collector-grower has been quietly beaver away growing seedlings to offer to locals.

The end of last year ended with a bit of a windfall for the Dove Catchment!!!

We were invited by Annette to a potting up bee at a nursery in Tasman, we managed to do 300 seedlings, which came back to Bill's place in root trainers. These seedlings had been planted by local school children at MOTEC, from locally sourced seeds.

Annette also advised us of around 1600 Manuka plants, being gifted by a local nursery, that required potting up or to be planted out immediately did we want them? Yippee! Yes please!!!

Suddenly the collection at Bill's burgeoned by a couple of thousand plants and he worked away at potting up Manuka, plus we were able to offer 100s of plants to locals to start the planting.

The generosity of others continued into the New Year, we were included in a Whenua Iti seedling offer, which Bill is working on now.

Bill needed a shade house - so ever resourceful and committed - he built one and when we acquired more seedlings he had to extend it. Bill has been sourcing pots, plastic planter bags, root trainers, compost for seedlings, building materials - either paying for them himself or having them donated.



Our Community Nursery has been born.

This is a dream come true to have trees and plants to offer to locals for a small fee to help cover cost of materials. Plus, we are always on the lookout for donations of pots, planters seed collecting areas.

Who knows where it will go from here?

Debbie Win



Tapawera's local real estate professional



"Hume Can Help"

Benjamin Hume
027 741 8809
benjamin.hume@summit.co.nz



Tapawera Rugby Club JAB



Registration Day

- Saturday 12th March 2-3pm
- Tapawera Club Rooms

All new and returning players sign up for...

- ✓ Junior Ripper
- ✓ First year tackle
- ✓ Tackle grades

Alternatively, complete your registration online by following the link <https://www.sporty.co.nz/viewform/143586>

More team coaches and managers are also needed - Come and see us about how you can help.

For more information contact
Gemma Walsh 027 3203846
gwalsh@tapawera.school.nz



Tapawera Kindergarten

We are a recently established kindergarten located on Tapawera Area School grounds offering:

- ◆ A curriculum catering to individual child's needs that is community focused, respectful and inclusive
- ◆ 100% qualified and registered teachers
- ◆ Open all year round
- ◆ A smooth transition to school
- ◆ Flexible hours
- ◆ Up to 30 hours of free early childhood education for 2-5 year olds

Tapawera Kindergarten is welcoming new enrolments now.

Stop by and have a chat with our teachers between 9:30am and 2:30pm or call/email for more information.

Open 8.45am—3pm, Monday—Friday
021 0878 8070

tapawerakindergarten@ntk.org.nz

We are located at the end of the Primary block, near the back field.



Up to 30 hours
free





Welcome to our newest and littlest Community members!



Sarah Brooks, Matthew Goldsworthy and little sister Gracie welcomed Harrison Paul John Goldsworthy into the world on Sunday the 30th January. Congratulations!



Elaine, Jason and big sissy Ella Moore welcomed little Noah in to the world last year on the 14th October
Welcome Noah!



Abby Logan and Dean Nott welcomed Carter William Mitchell Nott in to the world on the 15th of Feb. Welcome Carter!



Proud parents Gemma Walshand Richard Hay and big brother Logan welcomed Cooper Davis Hay in to their family on the 11th of January



And Emma Riley and Hayden Evans welcomed Magnolia Rose Evans (Maggie) in to the world on the 4th of February!
Can't wait to meet you Maggie!

On behalf of the Mammias Wellbeing Morning, with support from



Book Discussion Group

Meet: 4th Thursday in month, 10am
Contact: Paula Davis ph. 5224341

Federated Farmers

Contact: Brent Hodgkinson
Ph. 5224381

Golden Bush Garden Club

Meet: 2nd Thursday of month
Contact: President, Kathy Whyte
5224550, or Shirley Percy 5224924

Golf

Meet: every Sunday, Ladies 9 hole
every Tuesday
Contact: Gary Oldham ph. 0278080578

Historical Society

Contact: Barbara Carleton ph. 5224317

Informer

PO Box 15 Tapawera
Email tapawerainformergmail.com

Justice of The Peace

Peter Phillips ph. 5224313
John Ellis ph. 5224239
Brent Hodgkinson ph. 5224381
Francine Currie ph. 5224245
Susan Fenemor ph. 0275224009 (text
during school hours)

MENZSHED

Contact: John Wilmshurst ph. 5224616

Netball

Contact: Susan Fenemor ph.
0275224009 (text during school hours)

Ramblers

Meet: each month
Contact: Shirley Percy ph. 5224924

Shedwood Hall bookings

Contact: Tania Higgins ph. 5224587

St Andrews Church Stanley Brook

Services every Sunday. Cup of tea
afterwards.
Contact: Lee Winter ph. 5224160

St John Ambulance, Tapawera

St John: ambulance – dial 111,
Contact: 0800 785 646 ext. 3227

Tapawera Community Centre

Bookings: Carolyn Ellis ph. 027 823
7247, email tapaweraTDCC@gmail.com

Tapawera Creative Fibre

Meet: every Wednesdays, Memorial
Hall, Tapawera
Contact: Dallas Robinson ph. 5224984

Tapawera Dentokan Jujutsu Club

Contact: Tony Hammersley ph. 5224609

Tapawera Food Bank

Contact: Suzzi Lankshear ph.
0277491063

Tapawera Music/Country Music Club

Meet: Alternate Sundays, Tapawera
Hotel 7:30pm
Contact: Elaine Douglas ph. 5418612

Tapawera Op Shop

Contact: Suzzi Lankshear ph.
0277491063

Tapawera Playcentre

Meet: Mon & Thur, 10am -12:30pm
Memorial Hall ph. 5224456

Tapawera Rugby Football Club

Bookings: ph. Judy Benjamin 5224445

Tapawera Connect

Contact: Phoebe Quinlivan ph. 021 211
6730 or 522 4929, email:
tapaweraconnect@gmail.com

Tapawera Sport & Recreation Society

Contact: Judy Benjamin ph. 5224445

Tapawera Volunteer Fire Brigade

Contact: Dean Millar Chief ph.
0279651399; Ted Oakly Deputy Chief
ph. 0210704033

Tapawera & Districts Community Church

Service: St. Peter's Tapawera. 2nd &
4th Sundays at 3pm
Contact: Church Office 03 541 8883
Vicar: Rev. Don Moses ph. 541 8883

TAS / Community Library

Mon, Wed & Thurs 9:30am-3:15pm,
Tues & Fri 10am-2:30pm. Contact:
Lareen Bonnington ph. 5224149
Library ph. 5224337/ext. 213

Tapawera & District Community Council

Meetings: 3rd Tuesday of month,
7:30pm Tapawera Community Centre

TESSI

Contact: Bruce Whyte ph. 5224550

Toy Library

Open Monday & Saturday 10:30am-
11:30am Contact: Jan ph. 5224102

Visual Arts Society Tapawera

Contact: Dallas Robinson ph. 5224984

**What's on
March**

- 12 Tapawera Rugby Club JAB
Registration Day, 2-3pm,
Tapawera Club Rooms
- 15 TDCC monthly meeting,
Community Centre, 7pm
- 20 Articles for Informer close 5pm
- 25 Girls Friday, 11am, Tapawera
Hotel
- 29 Tea and Talk, Mary-Anne
Hardcastle (Guest speaker) on
Advanced Care Plans

**GP & Nurse at
Tapawera Clinic**

(during school term time):

GP clinics – Mondays
9am – 12 midday

Nurse clinic – alternate
Tuesday mornings - phone
541 8911 for dates

* *Do you have an event you
would like listed in What's On?*

* *Or a community group or
organisation you would like
included in the directory?*

If so, please email
tapawerainformergmail.com